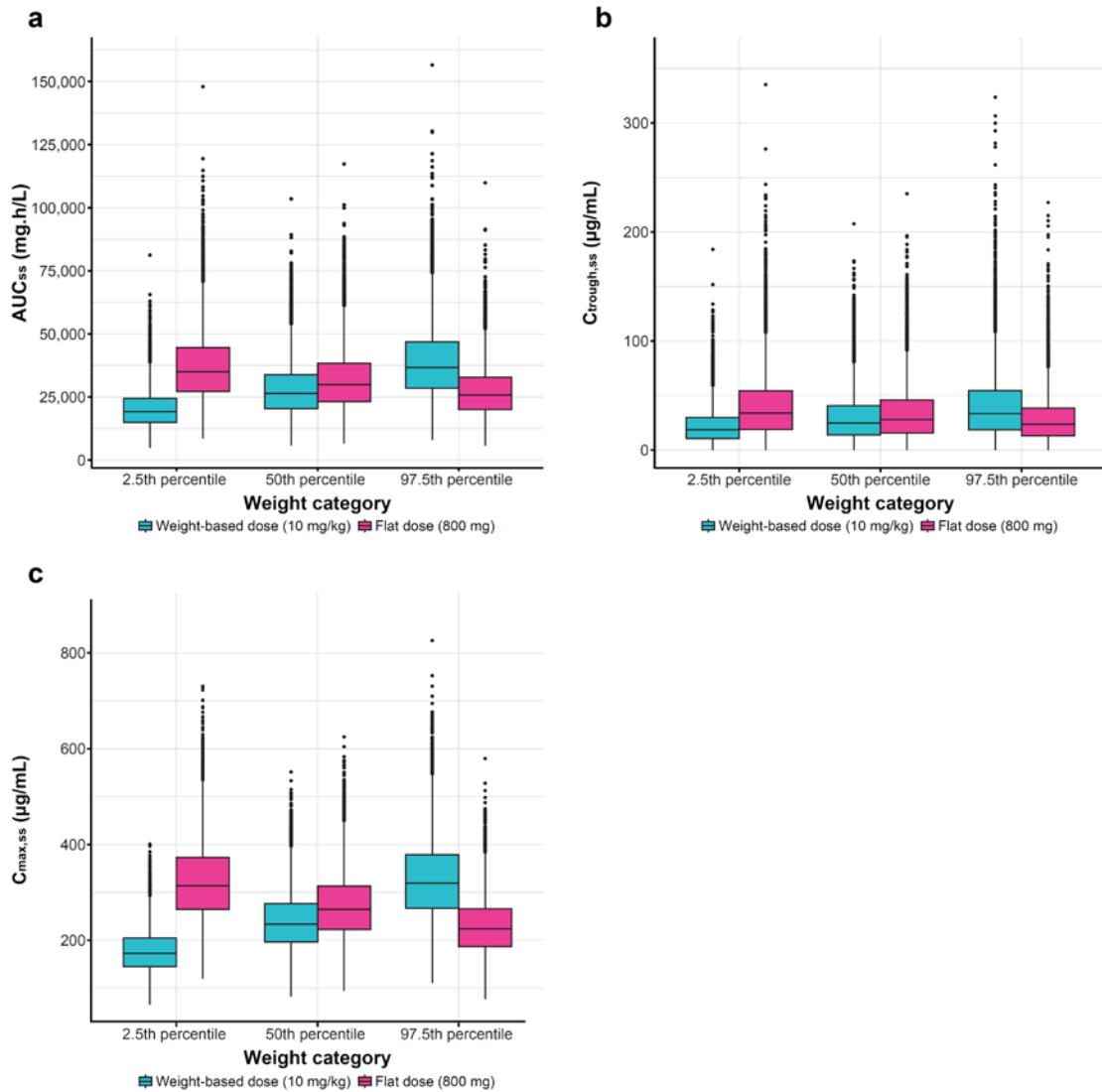


**Figure S3: Simulated exposure values for weight-based (10 mg/kg Q2W) and flat (800 mg Q2W) dosing of avelumab by extremes of weight using the steady-state population pharmacokinetic model.**



**(a) AUC<sub>ss</sub>, (b) C<sub>trough,ss</sub>, and (c) C<sub>max,ss</sub>.** AUC<sub>ss</sub>, steady state area under the curve; C<sub>trough,ss</sub> steady state trough concentration; C<sub>max,ss</sub>, steady state maximum concentration; Q2W, every 2 weeks.