

## Supplementary Information

**Figure S1:** dot plots of age (A) and diameter (B) of the first CRC

**Figure S2:** dot plots of the number of polyps per person (A) and age at first polyp (B)

**Table S1:** CRC and polyps in the FLCN<sup>MUT</sup> group

**Table S2:** CRC and polyps in the FLCN<sup>WT</sup> group

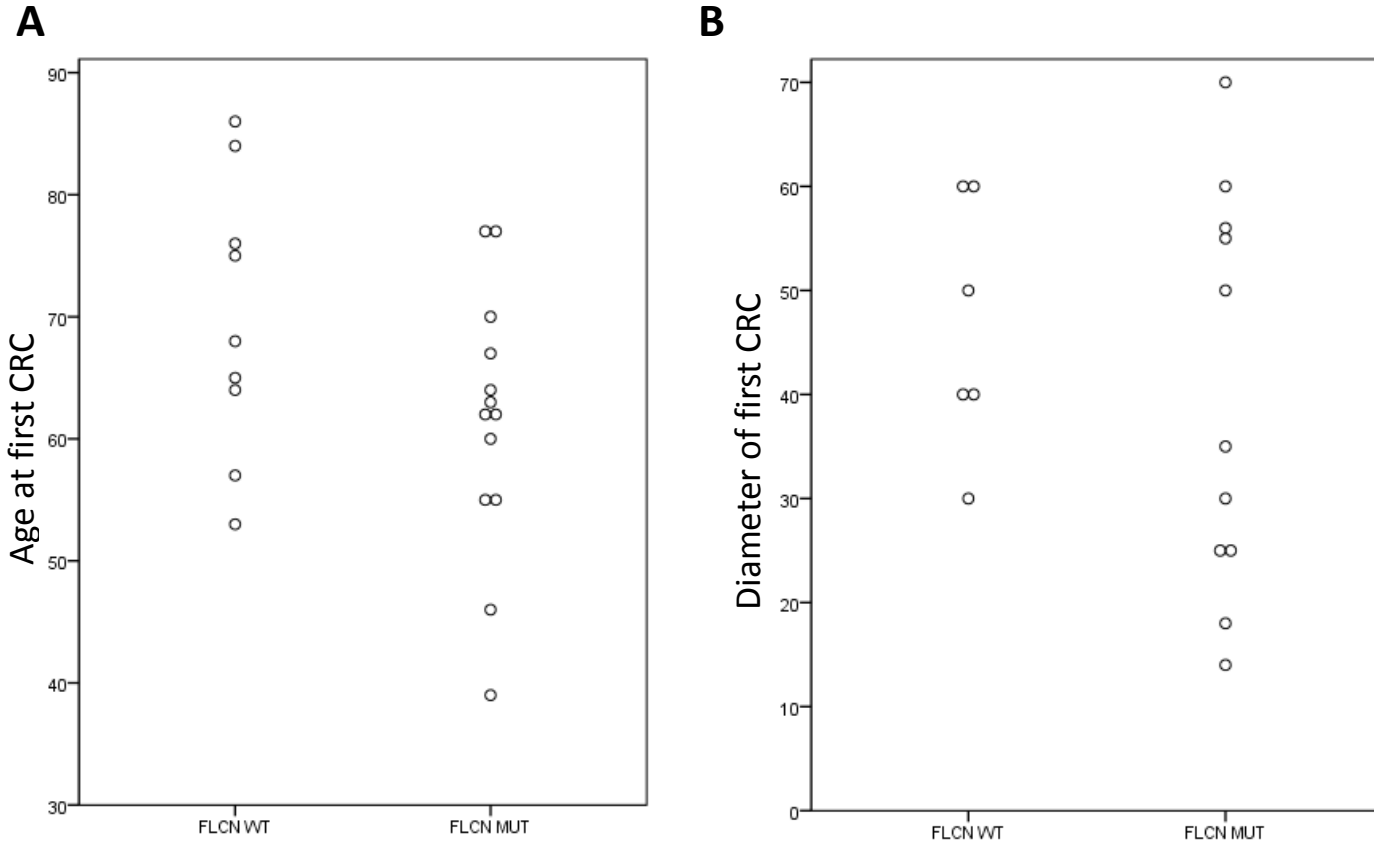


Figure S1: dot plots of age (A) and diameter (B) of the first CRC

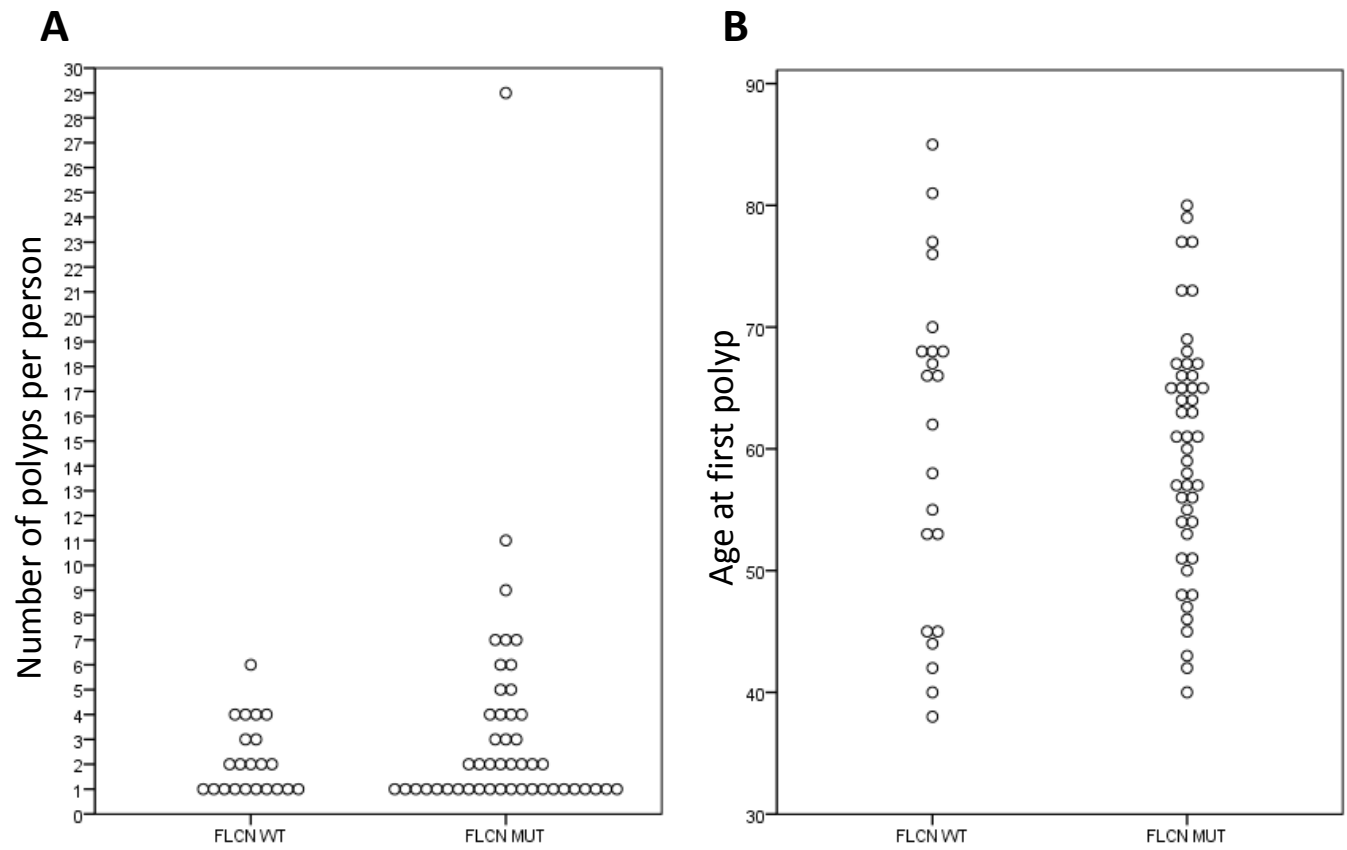


Figure S2: dot plots of the number of polyps per person (A) and age at first polyp (B)

**Table S1: CRC and polyps in the FLCN<sup>MUT</sup> group**

General		CRC					Polyps												
Number	poly (C) <sub>8</sub>	CRC (n)	Age	Location	Differentiation	Diameter	Polyp (n)	Age first	Location (n)			Grade of dysplasia (n)				Histology (n)			
									D	P	U	N/M	M	S	U	A	SS	H	U
1	N	Y (1)	62	D	M	18	N												
2	N	N					Y (1)	65	1			1				1			
3	N	Y (1)	46		M	70	Y (7)	50	1	4	2	4		1	2	5		2	
4	N	N					Y (3)	43	1		2	2			1	2		1	
5	N	N					Y (2)	80	1		1				2	1		1	
6	N	N					Y (1)	65	1			1				1			
7	N	Y (1)	64	P	M	60	Y (2)	60	1		1				2			2	
8	N	N					Y (1)	53		1		1				1			
9	N	N					Y (3)	57	1	2		3				2		1	
10	N	N					Y (5)	67	4	1		3		1	1	4		1	
11	N	N					Y (1)	48	1						1			1	
12	N	N					Y (6)	64	2	4		3			3	3		3	
13	N	Y (1)	77	P	W/M	30	Y (1)	77			1	1				1			
14	N	Y (1)	39	D	M	35	N												
15	Y	N					Y (1)	42			1		1			1			
16	N	Y (1)	55	D	M	56	Y (1)	66			1	1						1	
17	N	N					Y (2)	57	2						2			2	
18	N	Y (1)	62	D	M	50	Y (11)	57	2	3	6	3			8	3		8	
19	N	N					Y (1)	56			1	1				1			
20	N	N					Y (6)	46	1	1	4	1	2		3	3		3	
21	N	N					Y (9)	64	5	4		7			2	6	1	2	
22	N	N					Y (1)	68	1					1		1			
23	N	N					Y (1)	65			1	1						1	
24	N	N					Y (2)	79		1	1	2				2			
25	N	N					Y (4)	61	2	1	1	1	1	2	2	2		2	
26	N	N					Y (1)	54		1		1				1			
27	N	Y (1)	60	D	M	14	N												
28	N	N					Y (1)	58	1						1			1	
29	N	N					Y (1)	65		1		1				1			
30	N	N					Y (2)	51		1	1	1		1	2				

31	N	N					Y (5)	73	1	3	1	5				5			
32	N	Y (1)	77		W/M	55	Y (4)	77	1		3	3			1	3		1	
33	N	N					Y (7)	61			7	6			1	5	1	1	
34	Y	N					Y (2)	47		2		2				2			
35	N	N					Y (2)	69	2			2				2			
36	N	N					Y (7)	54	4	2	1	2		1	4	3		4	
37	N	N					Y (1)	66		1		1				1			
38	N	N					Y (1)	61			1	1							1
39	N	N					Y (3)	67			3	2	1			3			
40	N	N					Y (1)	45		1		1				1			
41	N	Y (1)	55	D	M		Y (1)	63	1			1				1			
42	N	N					Y (1)	51	1			1				1			
43	N	N					Y (2)	48	1	1		1			1	1		1	
44	N	N					Y (1)	40	1				1			1			
45	N	Y (1)	67	D			Y (4)	67	2	1	1	3			1	3		1	
46	N	N					Y (4)	55	1	1	2				4	3		1	
47	N	N					Y (1)	73	1						1			1	
48	N	N					Y (1)	56		1					1		1		
49	N	Y (2)	63 (both)	P (both)	W/M + U	25 & 10	Y (29)	63		1	28	13			16	13	1	15	
50	N	Y (1)	70	D	W/M	25	N												
51	N	N					Y (1)	59			1	1				1			

N, no; Y, yes; U, unknown. Location: D, distal; P, proximal. Differentiation: M, moderate; W/M, well/moderate; P, poor. Grade of dysplasia: N/M, no/mild; M, moderate; S, severe. Histology: A, adenoma; SS, sessile serrated adenoma; H, hyperplastic polyp.

**Table S2: CRC and polyps in the FLCN<sup>WT</sup> group**

General	CRC					Polyps												
	Number	CRC (n)	Age	Location	Differentiation	Diameter	Polyp (n)	Age first	Location (n)			Grade of dysplasia (n)				Histology (n)		
									D	P	U	N/M	M	S	U	A	SS	H
52	N					Y(1)	45	1						1			1	
53	N					Y(1)	81	1					1			1		
54	Y(1)	76	D	W/M	40	Y(4)	76	2	1	1	2			2	1	1	2	
55	N					Y(4)	66	2	2		3			1	1	2	1	
56	N					Y(2)	38	1	1		2				2			
57	Y(1)	64	D	M		N												
58	N					Y(2)	40	1	1		2				1		1	
59	N					Y(1)	68			1		1			1			
60	Y(1)	84	D	P	60	Y(1)	85		1					1	1			
61	N					Y(2)	53	1		1	1			1	1		1	
62	N					Y(1)	67	1			1				1			
63	Y(2)	53 & 65	D	M (both)	U & 30	Y(3)	58		2	1	1	2			3			
64	N					Y(1)	66		1		1				1			
65	N					Y(1)	68		1		1				1			
66	Y(1)	65	P	W/M	U	N												
67	N					Y(1)	62			1	1				1			
68	N					Y(4)	45	2	1	1	3	1			4			
69	Y(1)	57	P	M	40	N												
70	Y(1)	86	P	M	50	Y(6)	70		1	5	5			1	5		1	
71	N					Y(1)	55	1						1			1	
72	N					Y(4)	77	2		2	1		1	2	2		2	
73	Y(1)	75	P		30	N												
74	N					Y(2)	42			2	1			1	1		1	
75	Y(1)	68	D	M	60	Y(2)	68	1		1	1			1	1		1	
76	N					Y(1)	44	1						1			1	
77	N					Y(3)	53			3	2			1	2		1	

N, no; Y, yes; U, unknown. Location: D, distal; P, proximal. Differentiation: M, moderate; W/M, well/moderate; P, poor. Grade of dysplasia: N/M, no/mild; M, moderate; S, severe. Histology: A, adenoma; SS, sessile serrated adenoma; H, hyperplastic polyp.