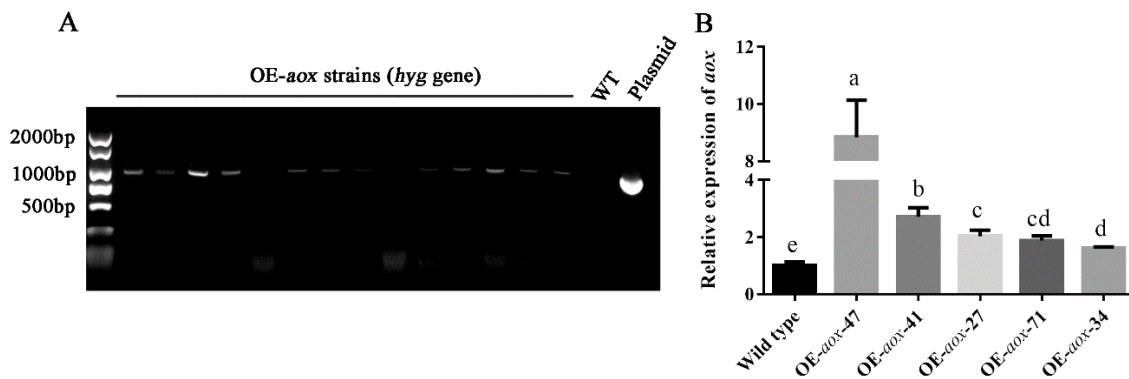


Supplemental Fig. S1 Strategy for the overexpression and RNA interference of target genes in *P. ostreatus*. A. The structure of the OE-*aco* vector. B. The structure of the RNAi-*aco* vector. C. The structure of the OE-*aox* vector.



Supplemental Fig. S2 Validation and selection of OE-*aox* strains. A. Preliminary selection of OE-*aox* transformation strains by amplification of the *hyg* gene. B. qPCR analysis of the expression of *aox* in the tested strains. The values are the mean \pm SE. Different letters indicate significant differences for the comparison of samples ($P < 0.05$, according to Duncan's test)

Supplemental gene sequence

>*aco_cDNA_Pleurotus ostreatus_CCMSSC00389*

```

ATGTTCAACCTAGCGAACCGCACTGCCGGTGCTCTTCGCTCGCTGCAGCGCATGGCCG
CCGGCATGGCCACAGCTGCACCGGAGCGAATTGGAGATACCAAAGTTCCTATGAGTTT
GCTTGAAAAGGGCGCATAACACTACCAGCGTATAGAGGACAACCTGGTCATCGTT
CGCGATAGATTGAAGCGACCATTGACCCTATCGGAGAAAATTCTTTACGGTCATCTTGA
CGATCCTCATGGACAAGATATTGAACGTGGTGTCTCATATCTCAAGCTGCGGCCTGACC
GAGTCGCCTGCCAGGACGCTACGGCGCAGATGGCTATCTTACAATTCATGTCTGCTGGC
ATGGACACTGCTGCCGTTCCGACCACCGTACACTGTGACCACTTGATTGAGGCCCAAG
TTGGTGGTGTCAAGGATTTGGCCCGCGCTATCGATATCAACAGGGAGGTTTACGACTTT
TTGGCTACTGCTACTGCGAAGTACGGTCTTGGTTTCTGGAAACCCGGCTCTGGTATTAT
CCATCAAATCATTGAGAACTACGCATTCCCTGGTGGTCTTAIGATTGGCACTGATTC
GCACACGCCCAACGCTGGTGGCCTCGGTATGATTGCATGTGGAGTTGGAGGTGCTGAT
GCAGTCGACGTCATGGCGGGCCTACCATGGGAAGTAAATGCCCGAAGGTCATTGGTG
TTAACCTTACTGGTAAAATTAGCGGCTGGACTTCCCCCAAAGATGTTATTCTCAAGGTT

```

GCTGGCATATTGACGGTCAAGGGTGGAACTGGCGCTATCGTCGAATACAAGGGTCCTG
GTGTTGAATCACTCTCGTGCACGGGTATGGCGACTATTTGCAACATGGGTGCTGAGATA
GGCGCAACAACGTGCATGTTCCCATCAACAACCGCATGGTCGACTATCTAAAGGCCA
CCAAGCGCGGCGACATTGCCAACTATGCTTCTCGCTTCGCACACAATCTCCAGGCTGAT
GAGGGTTCCCAATACGATGAACACATCGAAATTA ACTTTGTCAGA ACTCGAGCCACACG
TCAACGGTCTTTTACTCCCAGTCTCGCCACCCCAATTTCCAAGTTCCGCCAGGCTGTT
GAGGAGAACAAGTGGCCGCTGAGCTCAAGGTCGCCTTGATCGGTTCTTGC ACTAACT
CTTCGTACGAGGATATGTCTCGCTCTGCCTCCATCGCCAACGAAGCCAAGGCACACGG
TCTCTCCGTCGCAAGCAAGTACACCATCACTCCCGGTTCCGAGCAAGTCCGCGCTACC
ATCGCCCGTGACGGTCAAATGGCTGCTCTTGAGGATGTTGGAGGCTTGGTTTTGGCCA
ACGCCTGCGGTCTTGCATCGGTCAATGGGACAGGAAGGATGTTAAGAAGGGCGAAC
CCA ACTCTATCATCACTTCTTACAACCGTAACTTCACTGGCCGTAACGATGCTAACCC
GCTACTCATGCCTTCGTGCCTCCCCGATATCGTGACCGCCATGGCCTTCGCTGGCGA
CCTCCGTTTCAATCCCCTCACTGACTCCCTCAAGGGTGCCGACGGCAAGGAATTCAAG
TTTTCCGCCCCACTGGCAACGAGCTCCCCCTCGCGGTTATGACCCCGGTGAAGATA
CCTTCCAACCTCTCCCGAGGATCGTGCCTCTGTCCAAGTTGCCGTCAGCCCCACTAGT
GACCGTCTTCAGCTGTTGAAGCCCTTCCAGCCATGGGACGGCAAGACACCAAGTGATC
TCCCATCTTGATCAAGGTCAAGGGCAAGTGACAACCGATCACATCTCCGCCGGTGG
ACCATGGCTCAAATACCGTGGCCATCTCGAGAACATCTCGCAAACTGTCTGATTGGTG
CCATCAACATTGAGAACGGTGAGGCCAACAAGGTCAAGAACCAACTTACTGGTGAAT
GGGGAGGAGTCCCCAGACTGCTGCCTCTACCGCGAGAAGGGCATCAAGTGGGTGCG
TCATTGGTGACCACA ACTATGGTGAAGGTT CATCTCGTGAGCACGCCGCCCTCGAGCC
CCGCTTCTCGGCGGTCTCGCCATCATCGTCCGCAGCTTTGCCCGTATCCACGAAACCA
ACTTGAAGAAGCAAGGCATGCTTGCTTTGACCTTCGTTGACCCCGCCGACTACGACAA
GATTCGTCCAGACGACAAGGTCGATATCCTCGGCCTCGAGGACTTCAAGCCCGGCCAG
AACTTGACTCTCAACGTCAAGCACTCTGACGGCGCCTCCGAGCAGATCCCCCTCGCAC
ACTCCTTCAACGAGGGACAGATTGAGTGGTTCAAGGCTGGCTCAGCATTGAACTTGAT
GGCTGCTAAGGCCAAGGGCAACTAG

>ox_cDNA_Pleurotus ostreatus_CCMSSC00389

ATGCTTCGCGCGCAACTCCACCAACAGGTATGTAGACAGGTCACAGGACGGTCCTTTG
TCTGGTCTCTCTGGCTACACCCCTCGCGACTAGTCGCCGAACCTTTTCCACCACACCG
AACCCCTTTAACGCCTTGACAAGTGATGCTGCGAAAGCTGCTGCAACTCCACATCCAA
CTGTTGGGAAGGGCCAGGCGCCACAACGAGCGAGCTCCGCAGACGGAGCAATAACGC
AGTCGACGCCGGTCAACACGGTGCCCACTATGATCAGAGGCGATTGGGTCTCTTTCA
CCCTGTTTATACGCCGAAGAGTTGAAGGCGGTGCAGATTCTACACAAAGAGACAAAA
TCTATGACAGATAAGATCGCATAACGGTCTTGTCAGATTGGCCAGGGCTGGGTTTCGATTT
CGTCTCGAGATATAAACACAAACCCCTTCTCCTAGCCATAACATGACCCTGCAAGAGC
TTCGCAACGAAGGTTACCTCCTGGATCAGAATGCATGGCTTAACCGAATTCTATTCTTG
GAAACGATCGCAGGTGTGCCCGGTATGGTAGGTGCGACCTTGCGGCATCTACAAAGCC
TACGTTTAATGCGGCGTGACAATGGGTGGATCCACACTCTTCTATCGGAATCGGAAAAC
GAGCGGATGCACTTGATGACTTTTATGACTTTGAGGCGGCCTACACCATTCTTCAGGGC
GTTGGTTCTCGGTGCACAGGGTGTCTTCTACA ACTTGCTCTTTTTGACGTACATCGTCT
CACCTCGAGCTTGCCATCGCTTCGTCCGATATCTTGAAGAGGAAGCTGTCATCACTTAT
ACTCGCTGTATACAGGACCTGGAAGCAGGCCGAATCCCTGAATGGGAGAATGAGCCTG

CACCCGAGATCGCCATCGATTACTGGCGCTTGCGCCCGGATGCCAAATTACTCGATGTT
CTCTACGCTGTTTCGATCCGATGAAACGACACATCGATTTCGTCAACCACAGTCTTGCCGA
CCTGAATACAACAACAGACGTCAATCCTTTTCGCATTCAGGGAACCGGATATGCATGTTA
AAGGGAACAAGATTGGATTTCGAGCGTTCGGAGTCGGAGAAATATGTCCAGGAATCTCA
TGATCTATATCTTCAAGAGAAGCAGAAAGGTAGTAATTGA