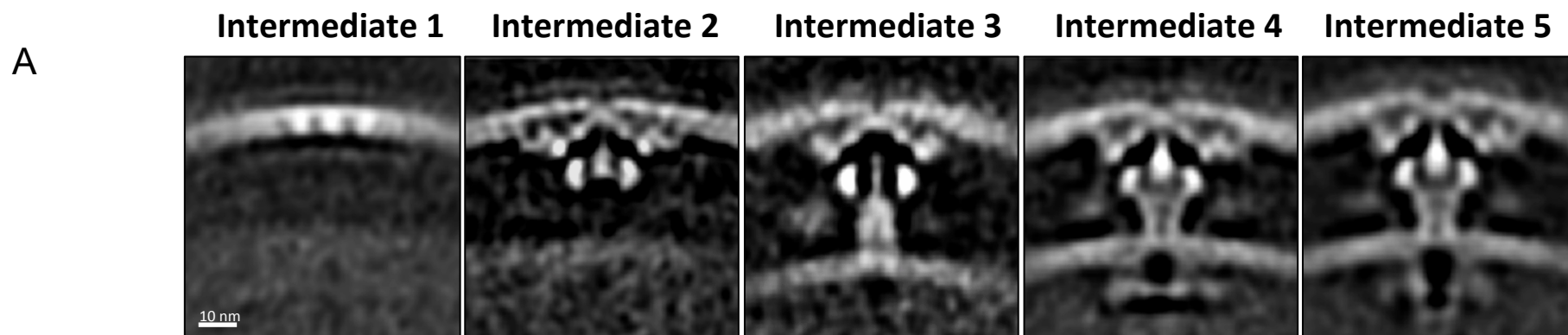


Particle distributions



B

WT	458 (26.8%)	254 (14.9%)	367 (21.5%)	152 (8.9%)	475 (27.8%)
DotB _{E191K}	246 (20.5%)	22 (1.8%)	123 (10.2%)	315 (26.2%)	495 (41.2%)
$\Delta dotB$	115 (22.2%)	7 (1.3%)	99 (19.1%)	298 (57.4%)	0 (0%)
$\Delta dotL$	79 (19.7%)	8 (2%)	30 (7.5%)	120 (29.9%)	164 (40.9%)
Total	898	291	619	885	1134