

Supporting Information

Top-down Proteomic Characterization of Truncated Proteoforms

Dapeng Chen^{1,3}, Lucia Geis-Asteggianti^{1,4}, Fabio P Gomes^{1,5}, Suzanne Ostrand-Rosenberg², Catherine Fenselau^{1*}

¹Department of Chemistry and Biochemistry, University of Maryland, College Park, MD; ²Department of Biological Sciences, University of Maryland Baltimore County, Baltimore, MD;

³Current address: ZeteoTech Inc, Sykesville MD; ⁴Current address: University Hospital Frankfurt, Frankfurt, Germany. ⁵Current address: The Scripps Research Institute, La Jolla CA.

*To whom correspondence should be addressed: fenselau@umd.edu

Supplementary Figures:

Figure S-1. GELFrEE fractions visualized by 1-D gels

Figure S-2. Gene ontology analysis of gene product precursors of the truncated proteoforms identified.

Figure S-3. Distribution of molecular masses of the truncated proteoforms identified.

Figure S-4. Number of truncated proteoforms for which a putative protease could be assigned to explain the produced amino termini and/or carboxyl termini of truncated forms.

Supplementary Tables:

Table S-1. Identified truncated proteoforms per gene product and assigned putative proteases.

Table S-1 can be found as a separate excel file

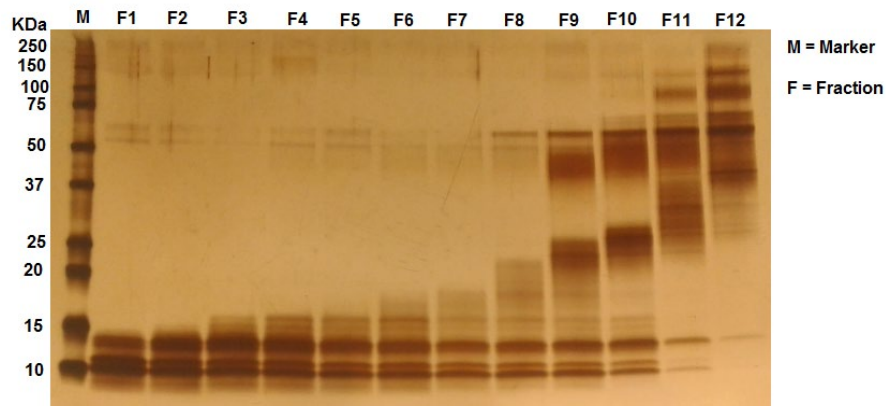


Figure S-1. GELFrEE fractions visualized by 1-D gels

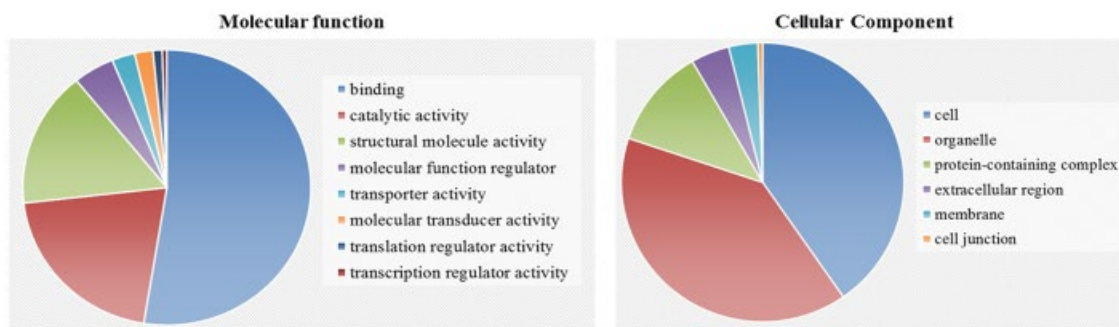


Figure S-2. Gene ontology analysis of gene product precursors of the truncated proteoforms identified.

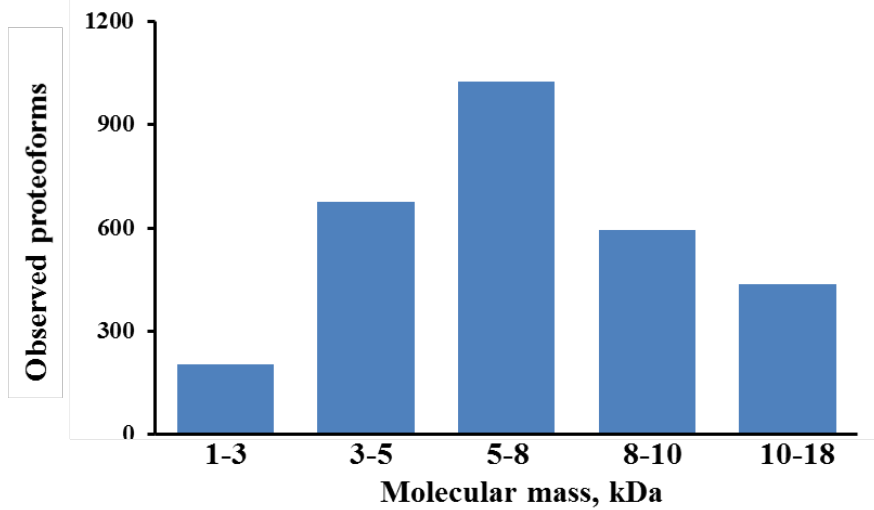


Figure S-3. Distribution of molecular masses of the truncated proteoforms identified.

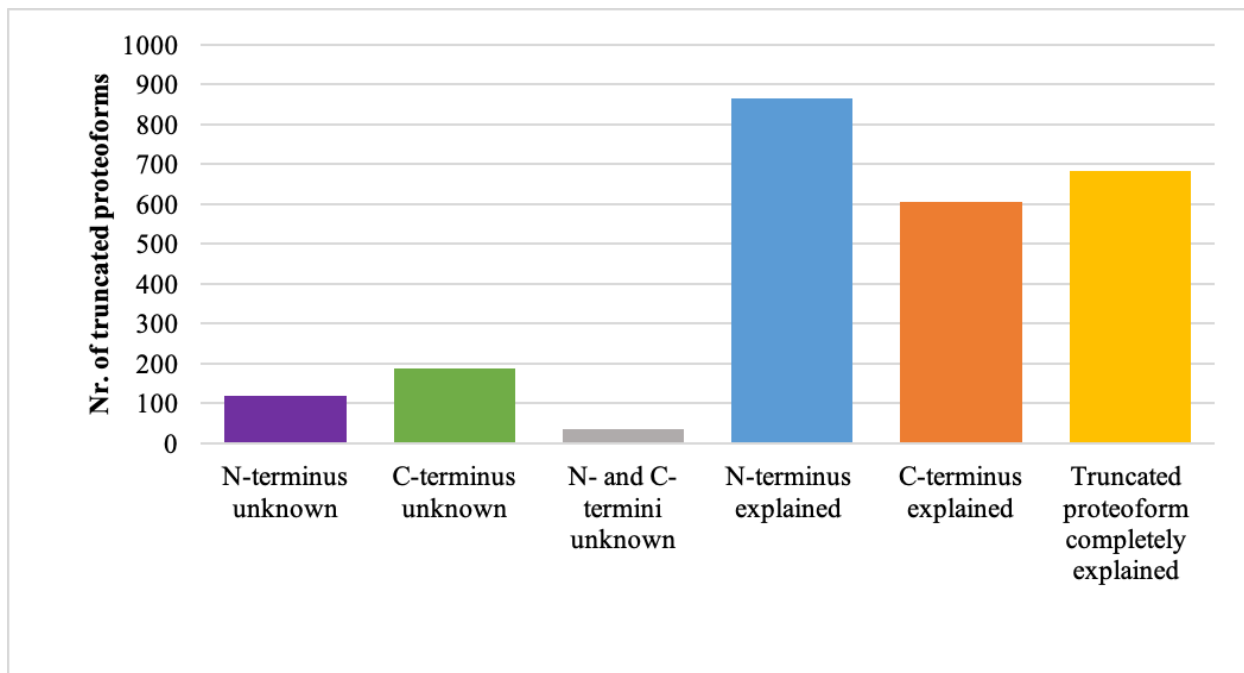


Figure S-4. Number of truncated proteoforms for which a putative protease could be assigned to explain the produced amino termini and/or carboxyl termini of truncated forms. For 34 proteoforms no proteases could be matched to either amino termini or the carboxyl termini.