

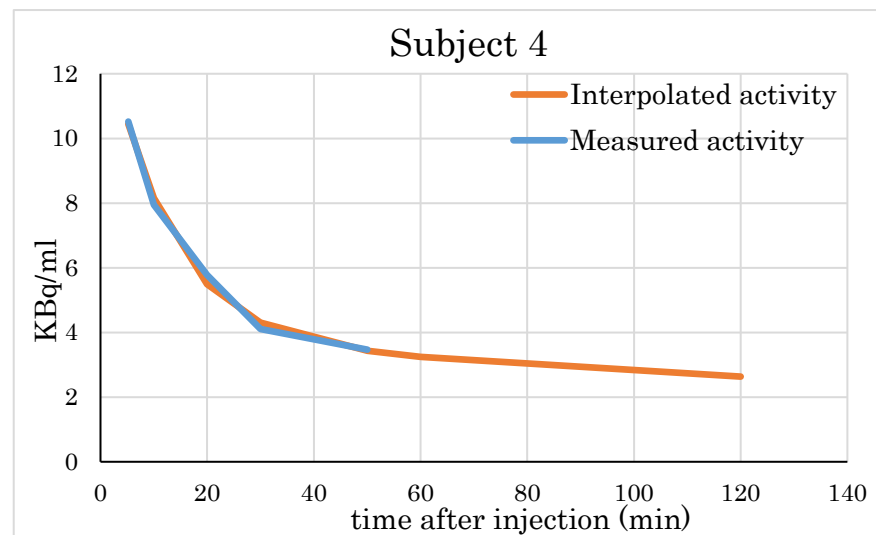
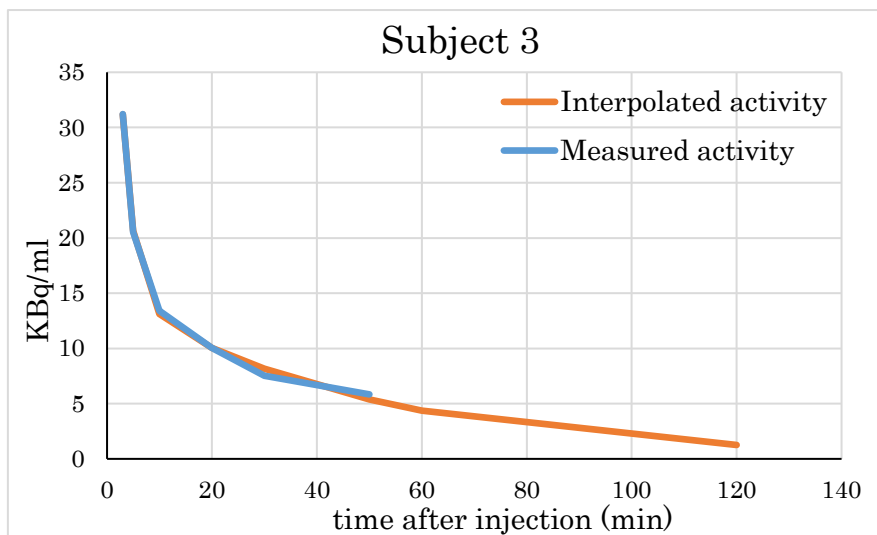
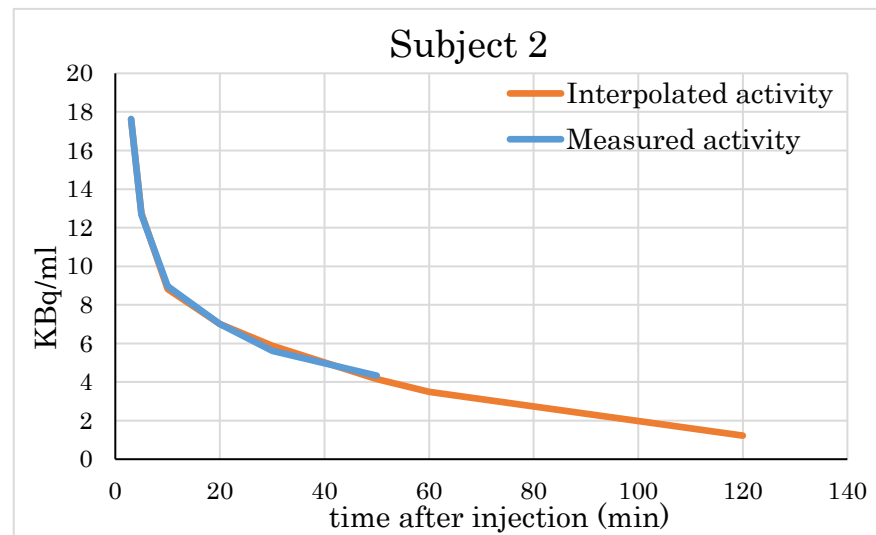
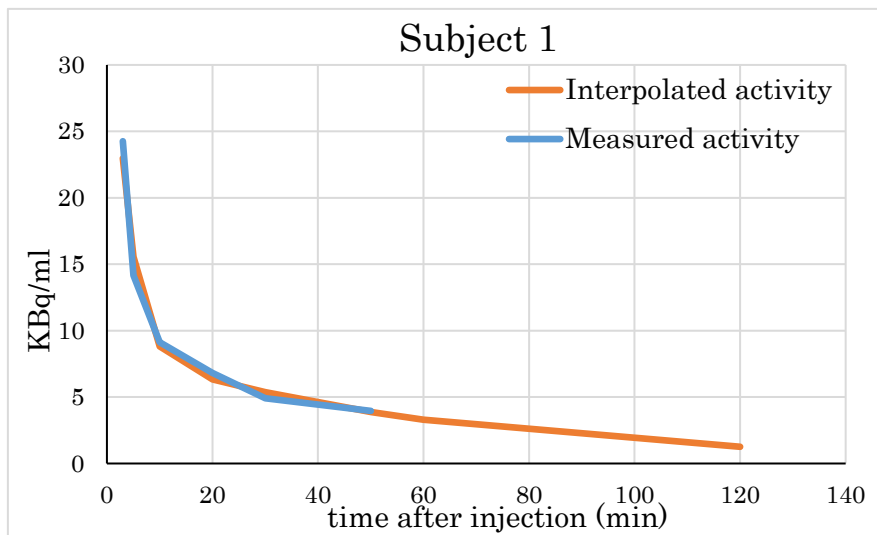
Article title: “Evaluation of the total distribution volume of ^{18}F -FBPA in normal tissues of healthy volunteers by non-compartmental kinetic modeling”.

Authors: Victor Romanov., Kayako Isohashi., Galal Al-Obthani., Rouaa Beshr., Genki Horitsugi., Yasukazu Kanai., Sadahiro Naka., Tadashi Watabe., Eku Shimosegawa., Jun Hatazawa.

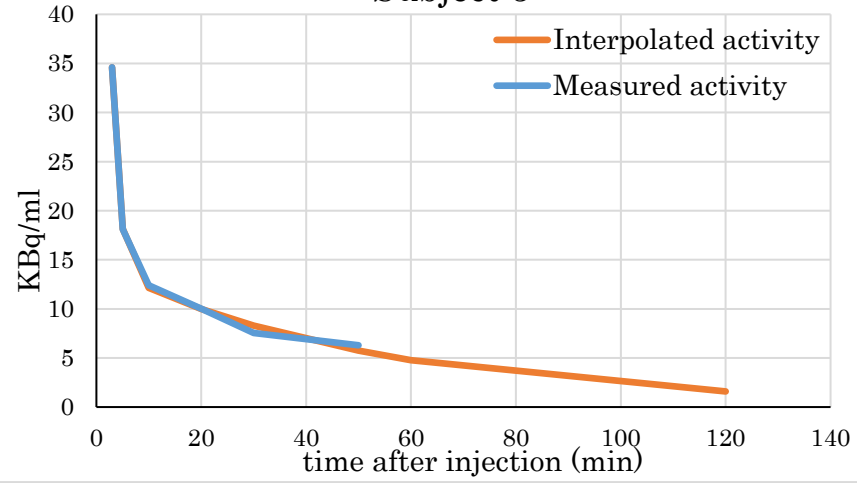
Affiliation and address of the corresponding author: Jun Hatazawa; Yamada Oka 2-2, Suita City, Osaka 565-0871, Japan; e-mail: hatazawa@tracer.med.osaka-u.ac.jp

Journal name: Annals of Nuclear Medicine (ANM).

Online Resource1 Interpolated plasma activity curves for all subjects in kBq/ml, derived from the clearance data points of actual plasma activity with a bi-exponential model. Interpolated curve is colored in red, and actual plasma curve is colored in blue.



Subject 5



Subject 6

