

Prospective diagnostic accuracy study of plasma soluble ST2 for diagnosis of acute aortic syndromes

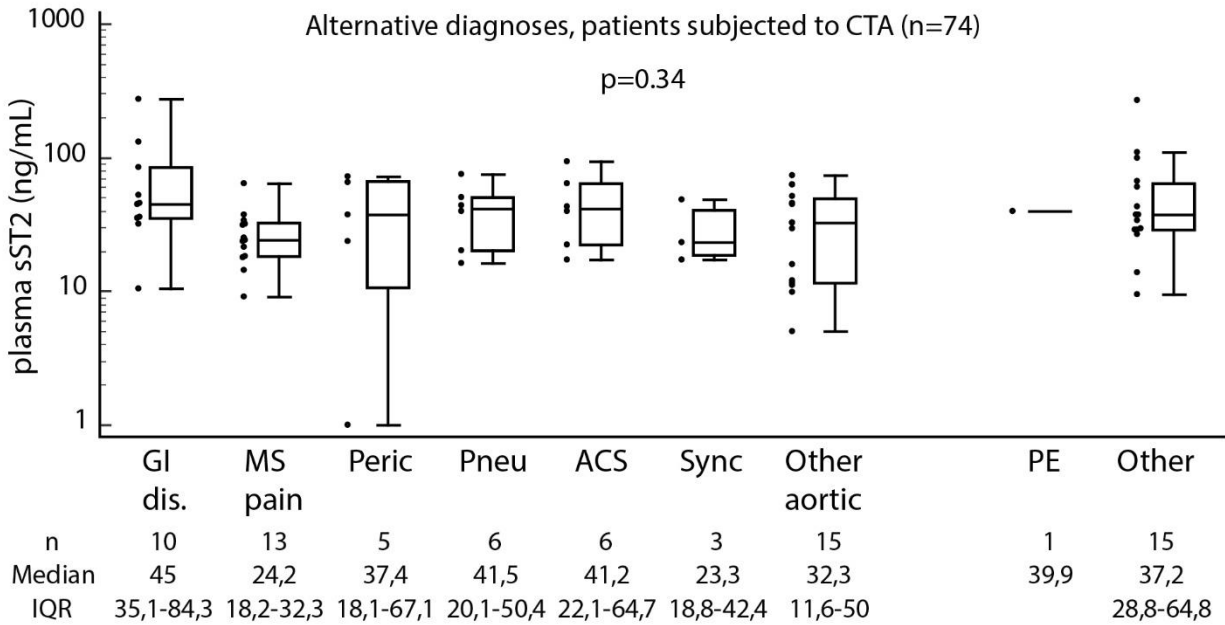
Fulvio Morello M.D. Ph.D.^{1,2}, Alice Bartalucci M.D.¹, Marco Bironzo M.D.¹, Marco Santoro M.S.¹, Emanuele Pivetta M.D. Ph.D.¹, Alice Ianniello B.D.³, Francesca Rumbolo B.D.³, Giulio Mengozzi M.D. Ph.D.³, Enrico Lupia M.D. Ph.D.^{1,2}

1. S.C.U. Medicina d'Urgenza, Molinette Hospital, A.O.U. Città della Salute e della Scienza, Torino, Italy. 2. Dipartimento di Scienze Mediche, Università degli Studi di Torino, Torino, Italy. 3. S.C. Biochimica Clinica, A.O.U. Città della Salute e della Scienza, Torino, Italy.

SUPPLEMENTARY MATERIAL

Supplementary figure 1.

a



b

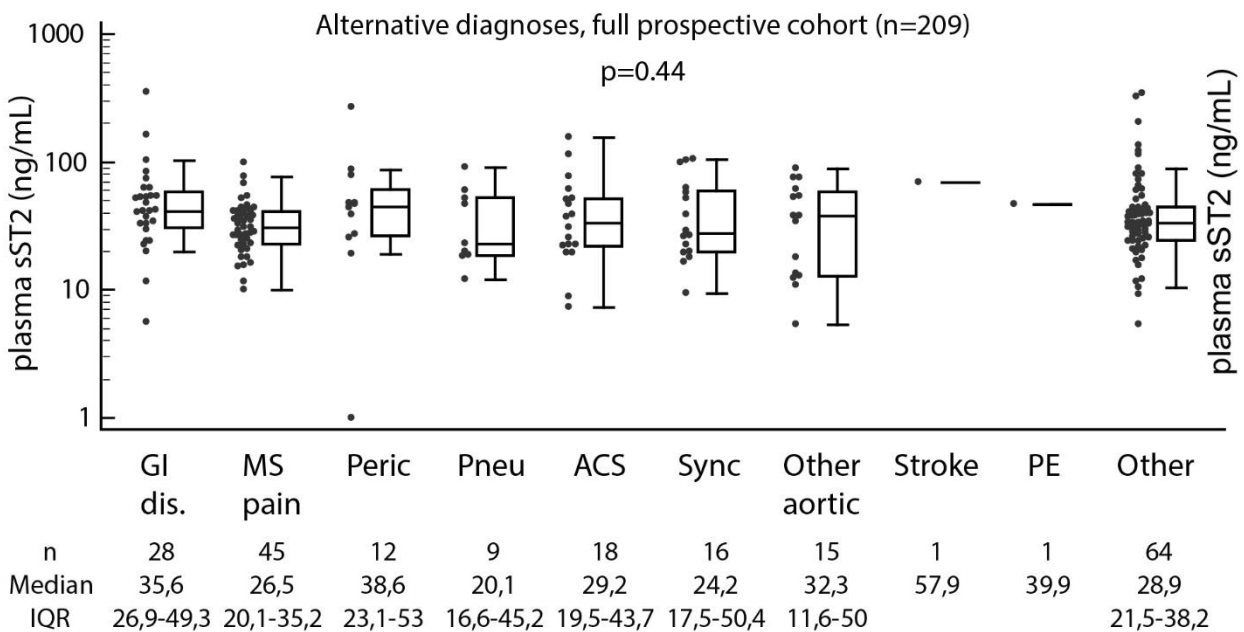


Figure legend. Dot-plot and box-whisker representation of plasma sST2 levels in study patients with alternative diagnoses. **(a)** Patients subjected to CTA. **(b)** Patient adjudication based on diagnostic outcome (full cohort). ACS: acute coronary syndrome; GI dis: gastro-intestinal disease; MS: muscle-skeletal; Other aortic: other aortic diseases; PE: pulmonary embolism; Peric: pericarditis; Pneu: pleurisy/pneumonia; Sync: non AAS-related syncope.

Supplementary table 1. Demographic and clinical characteristics of study patients subjected to computed tomography angiography.

Variable	Total patients (n=162)	AASs (n=88)	AltD (n=74)	P-value
Female gender	49 (30.2%)	26 (29.5%)	23 (31.1%)	0.83
Age [y]	71 (59-79)	72 (59.5-80)	69 (58-79)	0.51
Hypertension	105 (64.8%)	62 (70.5%)	43 (58.1%)	0.1
Diabetes	12 (7.4%)	7 (8%)	5 (6.8%)	0.77
Dyslipidemia	8 (4.9%)	3 (3.4%)	5 (6.8%)	0.33
Smoking	46 (28.4%)	26 (29.5%)	20 (27%)	0.72
Drug use	2 (1.2%)	2 (2.3%)	0 (0%)	0.19
Coronary art. dis.	17 (10.5%)	6 (6.8%)	11 (14.9%)	0.1
Active cancer	1 (0.6%)	0 (0%)	1 (1.4%)	0.27
Periph. art. dis.	0 (0%)	0 (0%)	0 (0%)	-
Abdominal aortic an.	14 (8.6%)	5 (5.7%)	9 (12.2%)	0.14
Previous AAS	10 (6.2%)	4 (4.5%)	6 (8.1%)	0.35
Systolic BP [mmHg]	140 (120-160)	140 (110-170)	145 (125-160)	0.72
Diastolic BP [mmHg]	80 (70-90)	80 (60-95)	80 (74-90)	0.09
Heart rate [bpm]	74 (67-85)	72 (64-83)	75 (69-90)	0.25
Time from onset [h]	4 (2-9)	3 (2-6)	6 (3-14)	<0.001
WBC count [$\times 10^3/\mu\text{L}$] ^A	9.97 (7.68-12.78)	11.66 (9.1-14.35)	8.7 (6.84-10.85)	<0.001
Creatinine [mg/dL] ^B	1.01 (0.83-1.2)	1.06 (0.86-1.21)	0.96 (0.82-1.15)	0.11
Troponin T [ng/mL] ^C	15 (9-33)	20 (10-41)	11.5 (7.5-19)	0.005
D-dimer [ng/mL] ^D	1840 (780-8600)	6301 (1813-28646)	1013.5 (340-1706)	<0.001

^An=160; ^Bn=159; ^Cn=139; ^Dn=133. Categorical variables are presented as n (%) and continuous variables as median (25th-75th percentile). AAS= acute aortic syndrome; AltD: alternative diagnoses; an.=aneurysm; art.= artery; BP= blood pressure; dis.= disease; sy.= syndrome; thor.= thoracic.