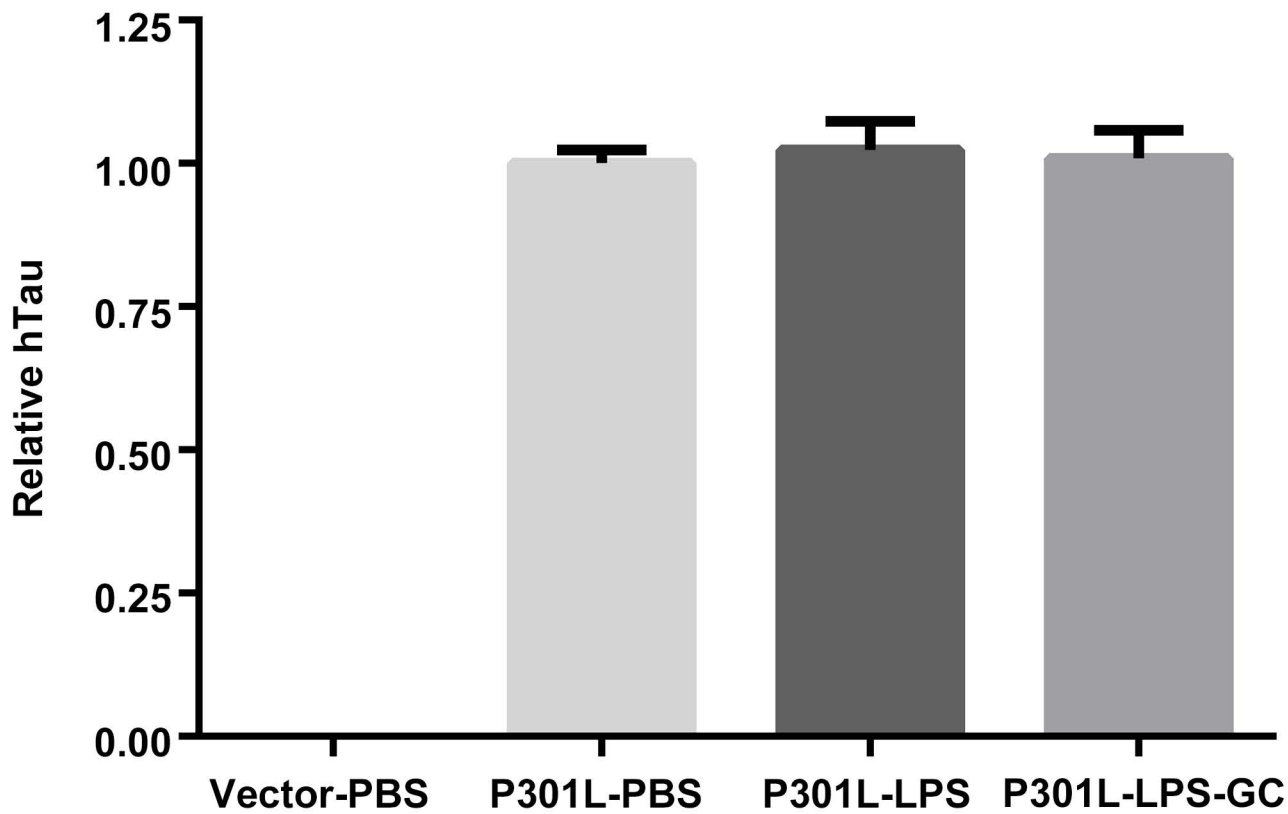
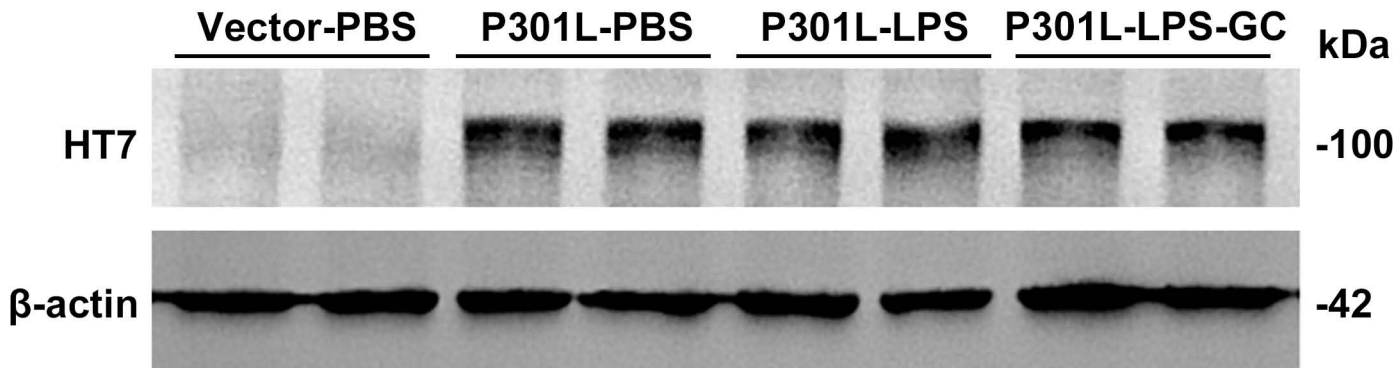
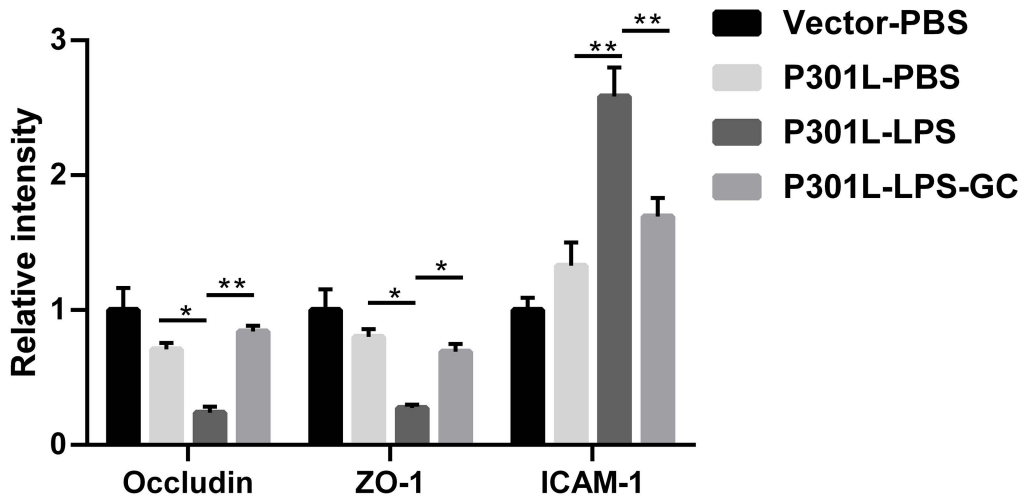
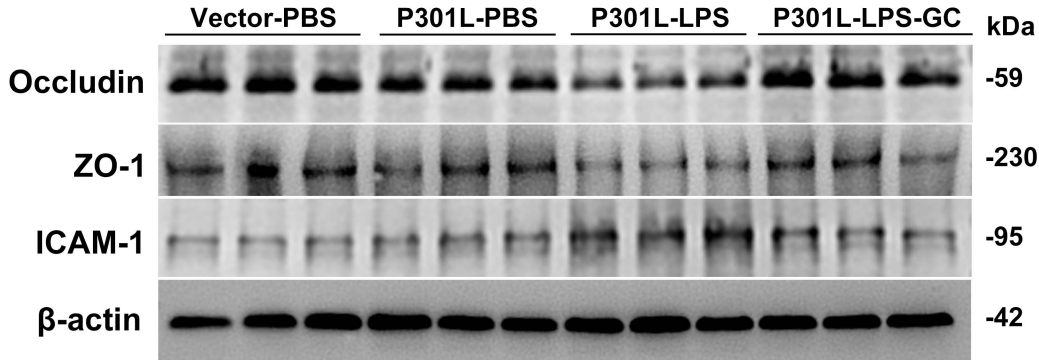


Supplementary Figure S1. Images showed the location, where the AAV-expressed tau was none-selectively detected, for each injection across the groups. (a) The initial site of injection was showed at low enough magnification by immunofluorescence staining using GFP (green) and Hoechst (blue). (b) The AAV-expressed tau was none-selectively detected in the EC subset by co-immunofluorescence staining of HT7 (cyan) and NeuN (red), or HT7 (cyan) and IBA1 (red), or HT7(cyan) and GFAP (red).



Supplementary Figure S2. Similar level of hTau was detected in EC subset in the three P301L groups. Brain tissue lysates in the EC subset were detected by Western blotting. Data were presented as mean \pm SD (n=4 each group, one-way ANOVA followed by Tukey *post hoc* test).



Supplementary Figure S3. Occludin, ZO-1 and ICAM-1 were detected in the hippocampus in the four groups. Brain tissue lysates in the hippocampus were detected by Western blotting. Data were presented as mean \pm SEM (n=3 each group, two-way ANOVA followed by Tukey *post hoc* test). *, P<0.05; **, P<0.01.