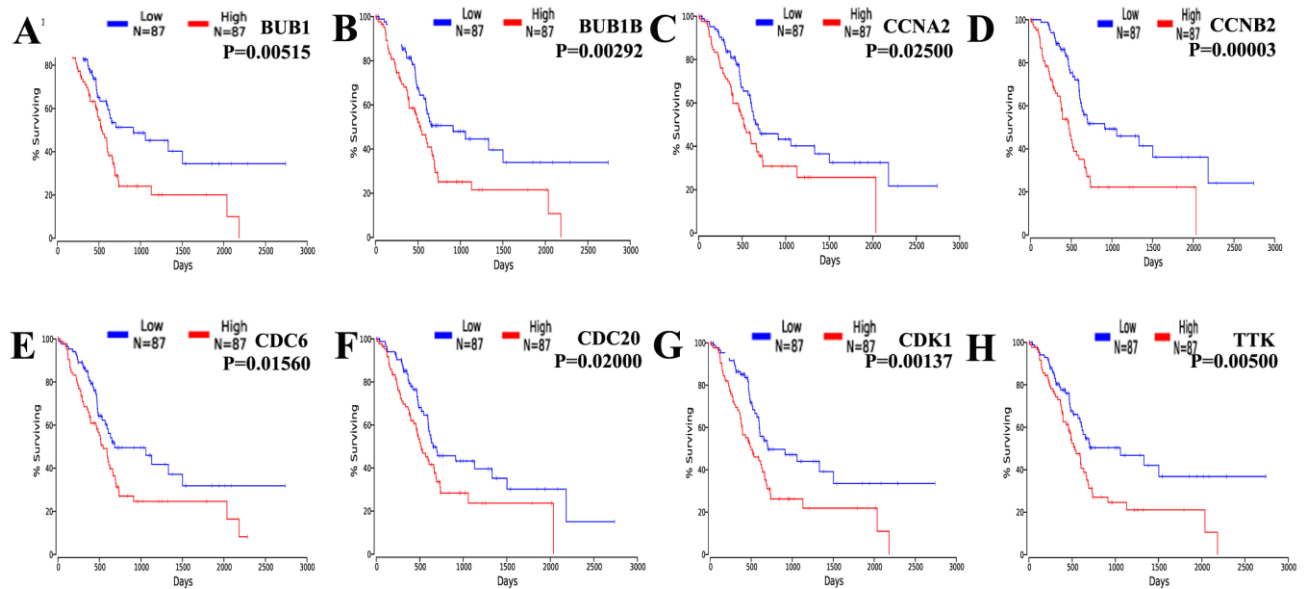
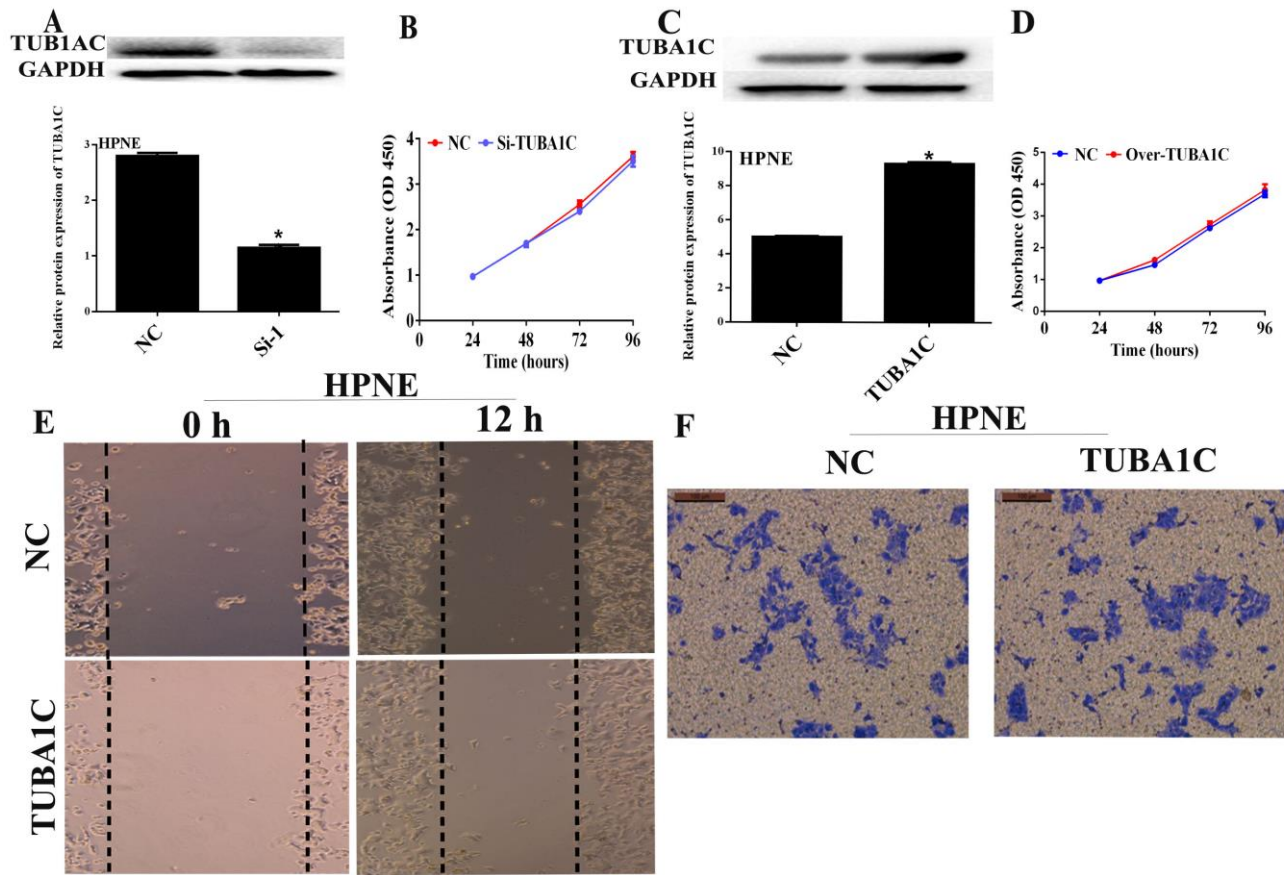


## Supplementary Material



**Supplementary Figure 1:** The cell cycle-related genes in patients with PDAC. (A-H) separately showed the survival curve was negatively correlated with the prognosis in PDAC patients.

$P < 0.05$  was considered to indicate a statistically significant



**Supplementary Figure 2:** knockdown or overexpression of TUBA1C had no effect on normal non-tumorigenic HPNE cells proliferation (A) Western blot analyses were performed to evaluate the knockdown of TUBA1C on HPNE cells ; (B) CCK-8 assays showed that knockdown of TUBA1C does not affect the proliferation of HPNE cells (n = 3) ; (C) Western blot analyses were performed to evaluate the TUBA1C overexpression on HPNE cells ; (D) CCK-8 assays showed that TUBA1C overexpressing does not affect the proliferation of HPNE cells (n = 3) ;

(E-F) wound healing and Transwell assays were performed to detect changes in migration and invasion of HPNE cells after TUBA1C overexpression (n = 3).

\*P<0.05 was considered to indicate a statistically significant