

THE LANCET

Gastroenterology & Hepatology

Supplementary appendix

This appendix formed part of the original submission and has been peer reviewed. We post it as supplied by the authors.

Supplement to: GBD 2017 Stomach Cancer Collaborators. The global, regional, and national burden of stomach cancer in 195 countries, 1990–2017: a systematic analysis for the Global Burden of Disease study 2017. *Lancet Gastroenterol Hepatol* 2019; published online Oct 21. [http://dx.doi.org/10.1016/S2468-1253\(19\)30328-0](http://dx.doi.org/10.1016/S2468-1253(19)30328-0).

Supplementary appendix

Supplement to: **The global, regional, and national burden of stomach cancer and its attributable risk factors in 195 countries and territories, 1990–2017: a systematic analysis for the Global Burden of Disease Study 2017**

Contents:

Appendix Tables

Appendix Table 1. Incident cases of stomach cancer in 1990 and 2017 for both sexes and percentage change of age-standardised rates by country and region

Appendix Table 2. Deaths due to stomach cancer in 1990 and 2017 for both sexes and percentage change of age-standardised rates by country and region

Appendix Table 3. DALYs of stomach cancer in 1990 and 2017 for both sexes and percentage change of age-standardised rates by country and region

Appendix Figures

Appendix Figure 1. Age-standardised mortality rates of stomach cancer per 100,000 population in 2017, by country and territory

Appendix Figure 2. Age-standardised DALY rates of stomach cancer per 100,000 population in 2017, by country and territory

Appendix Figure 3. Global number of incident cases and incidence rates of stomach cancer per 100,000 population by age and sex, 2017; Dotted and dashed lines indicate 95% upper and lower uncertainty intervals, respectively.

Appendix Figure 4. Global number of deaths and death rates of stomach cancer per 100,000 population by age and sex, 2017; Dotted and dashed lines indicate 95% upper and lower uncertainty intervals, respectively.

Appendix Figure 5. Global number of DALYs and DALY rates of stomach cancer per 100,000 population by age and sex, 2017; Dotted and dashed lines indicate 95% upper and lower uncertainty intervals, respectively.

Appendix Figure 6. The percentage change in age-standardised incidence rates of stomach cancer from 1990 to 2017 for 21 Global Burden of Disease regions by sex.

Appendix Figure 7. The percentage change in age-standardised mortality rates of stomach cancer from 1990 to 2017 for 21 Global Burden of Disease regions by sex.

Appendix Figure 8. Age-standardised DALY rate of stomach cancer versus SDI by country and territory, 2017; black line represents the expected age-standardised DALY rate for stomach cancer based solely on SDI. SDI=Socio-demographic Index.

Appendix Figure 9. Percentage of stomach cancer DALYs attributable to high-sodium diet and smoking in 2017, by sex and age

Appendix Figure 10. Age-standardised (a) incidence, (b) death, and (c) DALY rates of stomach cancer globally and for 21 GBD regions by SDI, 1990-2017. For each region, points from left to right depict estimates from each year from 1990 to 2017. Lines are based on fitted regression models. DALY=disability-adjusted life-year. SDI=Socio-demographic Index. GBD=Global Burden of Diseases, Injuries, and Risk Factors Study.

Appendix Table 1. Incident cases of stomach cancer in 1990 and 2017 for both sexes and percentage change of age-standardised rates by country and region

	1990		2017		Percentage change in age-standardised rates between 1990 and 2017
	Counts (95% UI)	Rate (95% UI)	Counts (95% UI)	Rate (95% UI)	
Global	864372 (846682, 890421)	21.3 (20.9, 21.9)	1220662 (1189032, 1254563)	15.4 (15, 15.8)	-28 (-30.5, -25.4)
High-income North America	29797 (29287, 30385)	8.2 (8, 8.3)	39247 (37998, 40539)	6.5 (6.3, 6.7)	-20.4 (-23.3, -17.4)
Canada	4291 (4038, 4601)	12.9 (12.2, 13.8)	6999 (6186, 7825)	10.5 (9.3, 11.7)	-18.8 (-28.3, -8.4)
Greenland	7 (7, 8)	20 (18.5, 21.5)	8 (7, 8)	11.4 (10.4, 12.5)	-43 (-49.3, -36.1)
USA	25498 (25032, 25992)	7.7 (7.5, 7.8)	32239 (31247, 33230)	6 (5.8, 6.2)	-21.7 (-24.8, -18.7)
Australasia	2800 (2722, 2882)	11.7 (11.4, 12)	4263 (3845, 4692)	8.8 (7.9, 9.7)	-24.9 (-32.4, -17.1)
Australia	2323 (2256, 2394)	11.6 (11.3, 12)	3673 (3264, 4101)	9 (8, 10)	-23.1 (-31.8, -14)
New Zealand	477 (446, 510)	11.9 (11.2, 12.7)	589 (528, 657)	7.8 (7.1, 8.7)	-34.3 (-41.7, -26.4)
High-income Asia-Pacific	117390 (115459, 119276)	57.5 (56.5, 58.4)	131636 (125691, 138437)	29.5 (28.2, 31)	-48.7 (-51.1, -45.9)
Brunei	26 (24, 29)	23.6 (21.5, 25.9)	44 (39, 49)	13.6 (12.2, 15.3)	-42.3 (-49.7, -33.9)
Japan	100751 (98939, 102516)	58.8 (57.7, 59.8)	106507 (101418, 111555)	29.6 (28.3, 30.9)	-49.7 (-52, -47.2)
Singapore	445 (423, 469)	19.6 (18.7, 20.7)	685 (619, 748)	10.2 (9.2, 11.1)	-48 (-53.5, -42.7)
South Korea	16169 (15702, 16672)	49.2 (47.9, 50.7)	24401 (21766, 27240)	29.2 (26.1, 32.5)	-40.8 (-47.7, -33.5)
Western Europe	100144 (98442, 101993)	16.7 (16.5, 17)	95266 (90462, 100111)	10.5 (10, 11)	-37.4 (-40.6, -34.2)
Andorra	6 (6, 7)	11.2 (9.7, 13)	13 (11, 15)	9.2 (7.8, 10.7)	-18.5 (-33.8, -0.7)
Austria	2087 (1992, 2200)	17.3 (16.5, 18.1)	1835 (1643, 2033)	10.2 (9.1, 11.2)	-40.9 (-47.5, -33.7)
Belgium	2071 (1966, 2198)	13.1 (12.4, 13.8)	1780 (1580, 2009)	7.7 (6.9, 8.7)	-40.7 (-47.9, -33)
Cyprus	68 (62, 75)	8 (7.3, 8.8)	161 (139, 185)	8.5 (7.4, 9.8)	6 (-9.7, 24)
Denmark	852 (825, 880)	10.4 (10.1, 10.8)	753 (686, 824)	6.8 (6.2, 7.5)	-34.8 (-40.6, -28.3)
Finland	1209 (1173, 1247)	16.8 (16.3, 17.3)	880 (808, 971)	7.5 (6.9, 8.2)	-55.3 (-59.2, -50.5)
France	9668 (9279, 10096)	11.2 (10.8, 11.7)	9682 (8647, 10935)	7.2 (6.4, 8)	-36 (-42.8, -28.2)
Germany	25461 (24346, 26652)	19.3 (18.5, 20.2)	22026 (19305, 24965)	11.8 (10.4, 13.3)	-38.8 (-46.5, -30.5)
Greece	1846 (1759, 1949)	12 (11.5, 12.6)	2379 (2150, 2669)	10.4 (9.4, 11.5)	-13.8 (-22.1, -2.8)
Iceland	51 (47, 56)	17.3 (15.9, 18.9)	47 (42, 52)	8.8 (7.9, 9.8)	-48.9 (-55.7, -42.1)
Ireland	560 (536, 586)	13.3 (12.8, 13.9)	711 (630, 803)	9.8 (8.7, 11)	-26.6 (-35.3, -16.6)
Israel	504 (483, 524)	10.3 (9.9, 10.7)	743 (679, 814)	6.6 (6.1, 7.3)	-35.6 (-41.3, -29.5)
Italy	19139 (18259, 20134)	20.9 (20, 22)	18639 (16544, 20965)	12.7 (11.3, 14.3)	-39.3 (-46.5, -31.6)
Luxembourg	76 (71, 81)	13.6 (12.8, 14.5)	86 (75, 100)	8.9 (7.7, 10.3)	-34.8 (-43.9, -24.1)

Malta	51 (48, 54)	11·8 (11·2, 12·4)	72 (65, 81)	8·2 (7·4, 9·1)	-30·6 (-37·7, -21·4)
Netherlands	3204 (3027, 3450)	15·6 (14·7, 16·7)	3801 (3371, 4280)	11·3 (10·1, 12·7)	-27·4 (-35·8, -17·6)
Norway	966 (943, 990)	13·8 (13·5, 14·2)	667 (626, 713)	7·1 (6·7, 7·6)	-48·7 (-51·9, -45)
Portugal	3521 (3421, 3632)	25·8 (25, 26·5)	3426 (3134, 3751)	15·7 (14·2, 17·2)	-39 (-45·1, -32·8)
Spain	10770 (10410, 11116)	19·3 (18·7, 19·9)	11881 (10506, 13294)	12·3 (11, 13·7)	-36·2 (-44, -28·7)
Sweden	1825 (1766, 1884)	11·8 (11·4, 12·1)	1100 (1022, 1182)	5·4 (5, 5·8)	-54·2 (-57·6, -50·3)
Switzerland	1340 (1255, 1450)	12·4 (11·7, 13·4)	1132 (999, 1289)	6·6 (5·9, 7·5)	-46·8 (-54, -38·9)
United Kingdom	14776 (14425, 15126)	15·5 (15·2, 15·9)	13351 (12969, 13769)	10·3 (10·1, 10·7)	-33·5 (-35·8, -30·8)
Southern Latin America	8770 (8580, 8970)	18·8 (18·4, 19·2)	10145 (9436, 10956)	12·4 (11·5, 13·4)	-34·1 (-39, -28·5)
Argentina	4910 (4743, 5079)	15 (14·5, 15·5)	5111 (4579, 5712)	9·6 (8·6, 10·7)	-36·2 (-43·4, -28·1)
Chile	3079 (2985, 3172)	30·6 (29·8, 31·6)	4313 (3864, 4824)	18·6 (16·7, 20·8)	-39·3 (-46, -31·9)
Uruguay	782 (753, 812)	19·7 (19·1, 20·5)	721 (646, 798)	13·4 (11·9, 14·8)	-32·3 (-39·8, -24·2)
Eastern Europe	84567 (82245, 87075)	29·3 (28·5, 30·1)	59809 (57983, 61663)	17·7 (17·2, 18·3)	-39·5 (-41·4, -37·5)
Belarus	4224 (4093, 4361)	32 (31, 33)	2885 (2612, 3186)	18·6 (16·8, 20·5)	-42 (-47·8, -35·7)
Estonia	570 (549, 592)	27·4 (26·4, 28·4)	465 (400, 538)	18·7 (16·2, 21·8)	-31·8 (-41·3, -20·8)
Latvia	931 (899, 966)	25·4 (24·5, 26·3)	674 (587, 772)	17·2 (15·1, 19·6)	-32·2 (-40·6, -22·9)
Lithuania	1179 (1138, 1224)	25·5 (24·6, 26·5)	973 (885, 1077)	17·4 (15·9, 19·1)	-31·8 (-38, -24·6)
Moldova	844 (816, 874)	18·1 (17·5, 18·7)	556 (522, 591)	9·9 (9·3, 10·5)	-45·4 (-49·2, -41·7)
Russia	56123 (54321, 58031)	30 (29·1, 31)	40871 (39789, 42060)	17·8 (17·4, 18·3)	-40·6 (-42·6, -38·6)
Ukraine	20695 (19666, 21809)	28·4 (27, 29·8)	13385 (12408, 14482)	17·8 (16·6, 19·3)	-37·2 (-42·5, -31·3)
Central Europe	24952 (24408, 25423)	16·5 (16·2, 16·8)	19794 (19194, 20462)	9·4 (9·1, 9·7)	-43·3 (-45·4, -41·2)
Albania	305 (289, 322)	13·6 (12·9, 14·5)	435 (361, 522)	10·5 (8·7, 12·6)	-23·2 (-37, -6·2)
Bosnia and Herzegovina	513 (489, 540)	12·2 (11·7, 12·8)	553 (507, 599)	9·3 (8·6, 10·1)	-23·6 (-31, -15·9)
Bulgaria	2162 (2073, 2249)	16·8 (16·2, 17·5)	1384 (1281, 1491)	9·5 (8·8, 10·3)	-43·4 (-48·1, -38·4)
Croatia	1475 (1406, 1550)	22·7 (21·7, 23·9)	1107 (1006, 1227)	12·5 (11·4, 13·8)	-45 (-50·4, -38·6)
Czech Republic	2482 (2398, 2568)	17·8 (17·2, 18·4)	1765 (1591, 1960)	8·6 (7·7, 9·5)	-51·7 (-56·6, -46·5)
Hungary	2844 (2733, 2959)	18·9 (18·2, 19·7)	1615 (1507, 1731)	8·4 (7·9, 9)	-55·5 (-59·3, -51·4)
Macedonia	354 (330, 378)	18·5 (17·2, 19·8)	381 (348, 419)	11·3 (10·3, 12·3)	-39 (-45·7, -31·7)
Montenegro	46 (41, 54)	7·4 (6·5, 8·5)	62 (55, 69)	6·2 (5·5, 6·9)	-16·2 (-31·1, 0·6)
Poland	7569 (7385, 7752)	16·7 (16·3, 17·1)	5923 (5535, 6308)	8·7 (8·1, 9·2)	-48·1 (-51·5, -44·4)
Romania	3974 (3805, 4132)	13·8 (13·2, 14·3)	3453 (3245, 3686)	9·5 (9, 10·2)	-31 (-36·1, -25·4)

Serbia	1433 (1273, 1622)	12·4 (11·1, 13·9)	1360 (1252, 1476)	8·7 (8, 9·5)	-29·7 (-39·4, -19·9)
Slovakia	1284 (1230, 1336)	21·2 (20·3, 22)	1254 (1107, 1416)	13·9 (12·3, 15·6)	-34·4 (-42·4, -25·1)
Slovenia	512 (488, 539)	20·6 (19·6, 21·6)	504 (453, 565)	11·8 (10·6, 13·2)	-42·7 (-49·2, -35·4)
Central Asia	11320 (11074, 11570)	23·1 (22·6, 23·6)	10513 (10059, 10965)	14·1 (13·5, 14·7)	-38·9 (-41·6, -36·2)
Armenia	569 (540, 600)	20 (19·1, 21)	518 (491, 545)	12·5 (11·8, 13·1)	-37·5 (-41·9, -32·7)
Azerbaijan	1217 (1153, 1282)	23 (21·9, 24·2)	1749 (1538, 1964)	19·5 (17·2, 21·7)	-15·4 (-25·9, -4·4)
Georgia	937 (887, 988)	14·8 (14, 15·6)	827 (782, 875)	14·2 (13·4, 15)	-4 (-11·1, 3·8)
Kazakhstan	3900 (3764, 4027)	29·1 (28·1, 30)	2237 (2076, 2410)	13 (12·1, 14)	-55·2 (-58·2, -51·9)
Kyrgyzstan	885 (838, 936)	28·3 (26·8, 29·8)	626 (588, 666)	14 (13·2, 14·9)	-50·5 (-53·9, -46·5)
Mongolia	623 (574, 677)	59·5 (55, 64·4)	764 (685, 852)	35·6 (31·9, 39·6)	-40·1 (-47·2, -32·5)
Tajikistan	680 (652, 708)	23·2 (22·3, 24·2)	928 (832, 1026)	17·4 (15·6, 19·2)	-25·3 (-33·4, -16·9)
Turkmenistan	386 (372, 401)	19·1 (18·5, 19·8)	375 (346, 408)	9·7 (9, 10·5)	-49·5 (-53·5, -44·8)
Uzbekistan	2123 (2048, 2203)	17·7 (17·1, 18·4)	2491 (2224, 2807)	10·8 (9·7, 12·1)	-39 (-45·8, -30·9)
Central Latin America	13043 (12833, 13342)	15·6 (15·3, 15·9)	29601 (28255, 31008)	12·9 (12·3, 13·5)	-16·9 (-20·8, -12·7)
Colombia	4128 (4003, 4300)	23·7 (23, 24·5)	8559 (7418, 9825)	15·9 (13·8, 18·2)	-32·9 (-41·5, -23·1)
Costa Rica	673 (636, 715)	38·5 (36·3, 41)	1501 (1354, 1654)	30·9 (27·8, 34)	-19·9 (-29·4, -10·4)
El Salvador	396 (373, 422)	13·2 (12·4, 14·1)	956 (807, 1129)	16·7 (14·1, 19·7)	26·7 (6·5, 51)
Guatemala	743 (719, 770)	21 (20·3, 21·7)	2076 (1873, 2280)	19·4 (17·5, 21·3)	-7·6 (-17, 2·3)
Honduras	176 (156, 198)	8 (7·1, 9)	414 (338, 501)	7·1 (5·8, 8·5)	-11·7 (-28, 10·3)
Mexico	4786 (4707, 4876)	11·1 (10·9, 11·3)	11300 (10968, 11639)	10·1 (9·8, 10·4)	-9·4 (-12·5, -6·2)
Nicaragua	206 (189, 224)	12·5 (11·5, 13·6)	429 (378, 488)	9·4 (8·3, 10·8)	-24·4 (-34·6, -12·5)
Panama	216 (206, 226)	14·2 (13·5, 14·9)	594 (537, 654)	15 (13·5, 16·5)	5·8 (-5·6, 17·2)
Venezuela	1721 (1662, 1785)	18 (17·4, 18·7)	3772 (3188, 4440)	14 (11·8, 16·4)	-22·4 (-34·8, -8·9)
Andean Latin America	5147 (4906, 5393)	24·8 (23·7, 26)	8925 (8194, 9658)	16·6 (15·2, 18)	-33·2 (-39·2, -26·6)
Bolivia	1352 (1193, 1548)	42 (37·4, 47·7)	2071 (1696, 2499)	24·9 (20·6, 30)	-40·8 (-52·4, -26·5)
Ecuador	1440 (1405, 1479)	26·7 (26·1, 27·5)	2512 (2287, 2762)	17·3 (15·7, 19)	-35·4 (-41·4, -28·9)
Peru	2356 (2178, 2521)	19·4 (18, 20·8)	4343 (3782, 4921)	14·1 (12·3, 16)	-27·2 (-37·7, -14·8)
Caribbean	2798 (2661, 2958)	10·6 (10·1, 11·2)	4033 (3769, 4342)	7·9 (7·4, 8·5)	-25·2 (-30·4, -19·6)
Antigua and Barbuda	7 (7, 8)	13·8 (12·9, 14·7)	9 (8, 10)	9·2 (8·5, 10)	-33 (-39·4, -25·7)
The Bahamas	20 (18, 21)	12·2 (11·6, 12·9)	31 (28, 34)	8·3 (7·6, 9·2)	-31·7 (-38·7, -23·3)
Barbados	45 (42, 47)	14·5 (13·8, 15·2)	43 (39, 48)	8·9 (8·1, 10)	-38·5 (-44·8, -31)

Belize	11 (10, 12)	11·2 (10·4, 12·2)	22 (21, 23)	8·4 (7·9, 8·9)	-25·6 (-32·8, -17·9)
Bermuda	7 (6, 7)	11 (10·3, 11·8)	10 (9, 11)	7·7 (6·7, 8·8)	-29·9 (-39·1, -19·5)
Cuba	769 (744, 797)	7·4 (7·1, 7·6)	1174 (1038, 1327)	6·3 (5·5, 7·1)	-15 (-25·3, -3·5)
Dominica	15 (14, 16)	20·6 (19·5, 21·7)	14 (13, 16)	15·5 (14·4, 16·8)	-24·6 (-31·1, -17·5)
Dominican Republic	264 (243, 286)	6·8 (6·3, 7·4)	660 (568, 754)	7·1 (6·1, 8·2)	4·2 (-11·7, 22)
Grenada	9 (9, 10)	13·3 (12·6, 14·1)	13 (12, 14)	8·2 (7·6, 8·7)	-38·7 (-43·8, -33)
Guyana	39 (38, 41)	10·1 (9·6, 10·6)	40 (35, 44)	6·5 (5·8, 7·3)	-35 (-42·4, -26·5)
Haiti	743 (616, 891)	23·1 (19·3, 27·7)	979 (782, 1198)	15·1 (12·3, 18·5)	-34·4 (-46·3, -20·5)
Jamaica	238 (224, 253)	13 (12·2, 13·8)	268 (231, 311)	9·2 (8, 10·7)	-28·8 (-39·5, -16·5)
Puerto Rico	393 (377, 411)	10·5 (10·1, 11)	460 (409, 519)	6·4 (5·7, 7·1)	-39·5 (-45·6, -32)
Saint Lucia	15 (14, 16)	16·9 (16·1, 17·8)	21 (20, 23)	10·2 (9·5, 11)	-39·9 (-44·9, -34·6)
Saint Vincent and the Grenadines	10 (9, 10)	13·1 (12·4, 13·8)	13 (12, 14)	9·4 (8·7, 10·1)	-28·4 (-34·9, -21·7)
Suriname	22 (21, 24)	8·8 (8·1, 9·4)	35 (31, 38)	6·1 (5·4, 6·7)	-30·6 (-39·2, -21·3)
Trinidad and Tobago	85 (81, 90)	10·1 (9·6, 10·6)	79 (66, 94)	4·5 (3·8, 5·4)	-55·2 (-63, -46·4)
Virgin Islands	9 (8, 10)	10·8 (10, 11·6)	19 (15, 21)	10 (8·3, 11·4)	-7·5 (-24·6, 8)
Tropical Latin America	14375 (14105, 14644)	15·8 (15·5, 16·1)	21823 (21369, 22331)	9·5 (9·3, 9·7)	-40·2 (-41·8, -38·5)
Brazil	14145 (13870, 14412)	15·9 (15·6, 16·2)	21399 (20946, 21887)	9·5 (9·3, 9·7)	-40·5 (-42, -38·8)
Paraguay	230 (213, 248)	10·5 (9·7, 11·3)	423 (358, 505)	8·1 (6·9, 9·7)	-22·8 (-36·5, -6·1)
East Asia	307683 (296319, 325735)	33·5 (32·3, 35·5)	583758 (554933, 612688)	28·6 (27·3, 30)	-14·7 (-21·5, -8·9)
China	295862 (284788, 312862)	34·1 (32·8, 36·1)	561938 (533157, 590626)	29 (27·6, 30·4)	-14·9 (-21·9, -8·9)
North Korea	3536 (2913, 4224)	20·8 (17·3, 24·5)	6407 (5181, 7787)	20·4 (16·6, 24·6)	-2·2 (-24·5, 25·6)
Taiwan (Province of China)	3160 (3068, 3255)	19·1 (18·6, 19·6)	6009 (5445, 6617)	15·8 (14·4, 17·4)	-17 (-25, -8·3)
Southeast Asia	31755 (29156, 34304)	12·1 (11·2, 13·1)	39191 (36559, 42265)	6·8 (6·4, 7·3)	-43·8 (-49, -38·2)
Cambodia	902 (739, 1088)	19·4 (15·9, 23·2)	1047 (894, 1247)	9·6 (8·3, 11·3)	-50·6 (-58·9, -40·5)
Indonesia	10514 (9314, 11735)	10·6 (9·3, 11·9)	14835 (13416, 16570)	7·5 (6·8, 8·3)	-29·4 (-37·8, -20·4)
Laos	396 (319, 481)	18·5 (15, 22·4)	348 (285, 421)	8·5 (7·1, 10·2)	-53·9 (-63·4, -42·4)
Malaysia	957 (872, 1046)	11 (10, 12)	1680 (1476, 1886)	7·1 (6·3, 8)	-35·3 (-46·2, -24·2)
Maldives	7 (6, 8)	7·5 (6·4, 8·7)	7 (6, 8)	2·4 (2·2, 2·7)	-67·6 (-73·6, -60·3)
Mauritius	94 (89, 99)	12·8 (12·2, 13·5)	110 (101, 120)	6·8 (6·3, 7·4)	-47·1 (-51·9, -41·7)
Myanmar	5326 (4337, 6543)	22·2 (18·2, 27·1)	4366 (3712, 5215)	10 (8·5, 12)	-54·9 (-64·2, -45)
Philippines	1947 (1835, 2068)	6·6 (6·2, 6·9)	2734 (2382, 3115)	4 (3·5, 4·5)	-39·5 (-47·5, -29·7)

Sri Lanka	834 (770, 900)	8 (7·3, 8·6)	1016 (841, 1207)	4·3 (3·6, 5)	-46·3 (-56·2, -35·1)
Seychelles	6 (6, 7)	11 (10, 12)	6 (6, 7)	5·7 (5·2, 6·2)	-48·2 (-54·5, -41·4)
Thailand	3190 (2938, 3440)	8·7 (8, 9·4)	4625 (4113, 5239)	4·8 (4·3, 5·4)	-44·7 (-52·4, -35·9)
East Timor	37 (30, 45)	12·8 (10·5, 15·4)	62 (50, 77)	8·1 (6·5, 9·9)	-36·3 (-49·9, -20·1)
Vietnam	7502 (6636, 8424)	17·8 (15·8, 20)	8302 (7182, 9588)	9 (7·8, 10·3)	-49·6 (-58·6, -39·2)
Oceania	523 (439, 611)	16·2 (13·9, 18·6)	988 (815, 1177)	13·8 (11·7, 16·1)	-14·5 (-25·6, -3)
American Samoa	4 (3, 4)	15·6 (14·1, 17·1)	5 (4, 6)	12·6 (11·2, 13·9)	-19·5 (-30·8, -7·2)
Federated States of Micronesia	7 (6, 9)	15 (12·8, 17·5)	7 (6, 9)	11·4 (9·5, 13·4)	-24·4 (-38·3, -7·7)
Fiji	22 (20, 25)	6·3 (5·6, 7)	37 (32, 42)	5·5 (4·8, 6·2)	-13·1 (-26·4, 3·4)
Guam	4 (4, 5)	5·9 (5·4, 6·3)	9 (8, 10)	5·3 (4·8, 5·8)	-10 (-20·1, 2)
Kiribati	6 (5, 6)	14·8 (13·5, 16·3)	8 (6, 9)	11·3 (9·8, 12·9)	-23·6 (-35, -10·2)
Marshall Islands	3 (3, 4)	18·2 (16·2, 20·5)	5 (4, 6)	15·1 (12·8, 17·7)	-17·5 (-29·1, -4·1)
Northern Mariana Islands	2 (2, 2)	10·1 (8·9, 11·7)	3 (3, 4)	7·3 (6·5, 8·2)	-27·3 (-39·9, -12·8)
Papua New Guinea	387 (313, 466)	18·9 (15·5, 22·4)	774 (618, 947)	16 (12·9, 19)	-15·6 (-28·9, -1·2)
Samoa	10 (8, 11)	11·5 (9·8, 13·4)	13 (11, 15)	10·1 (8·7, 11·6)	-12·3 (-26·8, 4·9)
Solomon Islands	24 (20, 29)	16·5 (13·8, 19·7)	41 (34, 50)	12·5 (10·5, 14·9)	-24·3 (-36·6, -9·3)
Tonga	9 (8, 10)	17·2 (15·9, 18·6)	11 (9, 12)	13·6 (12, 15·4)	-21·1 (-32·4, -7)
Vanuatu	11 (8, 14)	15·6 (12·3, 19·5)	21 (16, 27)	13·1 (10·2, 16·6)	-16 (-33·1, 6·3)
North Africa and Middle East	23680 (21451, 25723)	13·5 (12·3, 14·6)	35755 (33988, 37539)	8·7 (8·3, 9·1)	-35·6 (-40·7, -29·7)
Afghanistan	2561 (1472, 3403)	36·4 (21·3, 48·2)	3794 (2994, 4765)	32·8 (26·5, 39·6)	-9·8 (-28·9, 45·8)
Algeria	891 (799, 981)	7·1 (6·4, 7·8)	1401 (1273, 1532)	4·3 (3·9, 4·7)	-39·2 (-45·9, -30·9)
Bahrain	18 (17, 19)	10·3 (9·5, 11·1)	33 (29, 36)	3·8 (3·4, 4·3)	-62·6 (-67·3, -57·3)
Egypt	1215 (1104, 1339)	4·6 (4·2, 5·1)	1895 (1679, 2134)	3·5 (3·1, 3·9)	-23·6 (-33·6, -11·4)
Iran	5300 (4876, 5732)	20·5 (18·9, 22·1)	9825 (9488, 10246)	14·6 (14·1, 15·2)	-28·7 (-34, -22·3)
Iraq	578 (490, 677)	7·1 (6·1, 8·3)	672 (623, 728)	2·8 (2·6, 3)	-60·9 (-67·3, -53·2)
Jordan	107 (92, 124)	7·3 (6·3, 8·3)	228 (202, 258)	4·2 (3·7, 4·7)	-42·9 (-53·3, -31)
Kuwait	30 (28, 32)	4·3 (4, 4·6)	59 (53, 65)	2·3 (2, 2·5)	-47 (-52·9, -40·1)
Lebanon	260 (222, 298)	11·6 (10, 13·2)	469 (419, 528)	7·7 (6·9, 8·7)	-33·4 (-44·3, -18·9)
Libya	133 (114, 155)	6·9 (5·9, 8)	298 (255, 346)	6·4 (5·5, 7·4)	-6·6 (-25·5, 16·6)
Morocco	736 (667, 814)	5·2 (4·7, 5·7)	1143 (958, 1351)	3·8 (3·2, 4·5)	-26·8 (-40·7, -11·3)
Palestine	83 (69, 99)	8·9 (7·4, 10·6)	128 (118, 140)	5·2 (4·8, 5·6)	-42·1 (-52·7, -29·3)

Oman	95 (78, 114)	13.2 (10.9, 15.8)	139 (114, 165)	7 (5.9, 8.2)	-46.7 (-57.4, -32.2)
Qatar	11 (9, 12)	10.1 (8.8, 11.7)	48 (39, 57)	5.6 (4.7, 6.7)	-44.7 (-55.7, -31.1)
Saudi Arabia	423 (350, 518)	7 (5.8, 8.6)	731 (638, 846)	4.8 (4.3, 5.5)	-31 (-45.6, -13.6)
Sudan	1689 (1289, 2085)	17.6 (13.7, 21.5)	2492 (1909, 3137)	13.9 (10.8, 17.4)	-20.8 (-37.9, 1.9)
Syria	314 (278, 350)	6 (5.3, 6.6)	501 (427, 586)	4.1 (3.5, 4.7)	-31.3 (-43.7, -16.3)
Tunisia	333 (302, 372)	6.9 (6.3, 7.6)	591 (480, 712)	5 (4.1, 6)	-27.3 (-42, -9.7)
Turkey	7727 (6957, 8491)	20.5 (18.4, 22.6)	8629 (7794, 9497)	9.9 (8.9, 10.9)	-51.8 (-58, -44.7)
United Arab Emirates	37 (30, 45)	9.3 (7.5, 11.4)	266 (206, 332)	8.5 (6.8, 10.3)	-9.2 (-31.7, 23.2)
Yemen	1127 (739, 1530)	21.3 (14.5, 28.3)	2381 (1781, 3042)	18.5 (14, 23.2)	-13 (-35.4, 27.9)
South Asia	64363 (59932, 69062)	10.3 (9.6, 11.1)	96577 (91436, 101062)	7.2 (6.8, 7.5)	-30.9 (-37.2, -25)
Bangladesh	6115 (5229, 7326)	12.4 (10.7, 14.7)	7490 (6339, 8802)	6.2 (5.2, 7.2)	-50.1 (-61.7, -38.2)
Bhutan	27 (22, 33)	10 (8.3, 12.3)	35 (28, 42)	5.7 (4.6, 7)	-43.2 (-57.1, -28)
India	53885 (49744, 57873)	10.7 (9.8, 11.6)	81672 (77287, 85894)	7.5 (7, 7.8)	-30.5 (-36.9, -23.9)
Nepal	1125 (932, 1366)	11.2 (9.3, 13.5)	1624 (1361, 1932)	7.6 (6.4, 9.1)	-32.1 (-45.4, -16.7)
Pakistan	3212 (2881, 3587)	5.5 (5, 6.2)	5756 (4763, 6842)	5.2 (4.4, 6.1)	-5.7 (-22.7, 13.7)
Southern sub-Saharan Africa	2055 (1947, 2177)	7.1 (6.8, 7.6)	2839 (2706, 2979)	5.2 (5, 5.4)	-27.3 (-32.3, -22.2)
Botswana	43 (37, 51)	7.7 (6.6, 8.9)	57 (50, 65)	4.5 (4, 5.2)	-41.2 (-51, -29.1)
Lesotho	100 (87, 115)	10.3 (8.9, 11.7)	112 (92, 132)	9.6 (7.9, 11.2)	-7.3 (-24.1, 12.9)
Namibia	38 (34, 43)	5.5 (4.9, 6.1)	42 (36, 49)	3.1 (2.7, 3.6)	-43.9 (-52.9, -33.4)
South Africa	1415 (1333, 1502)	6.4 (6, 6.8)	1880 (1806, 1962)	4.4 (4.2, 4.5)	-31.7 (-35.7, -27.2)
Swaziland	28 (24, 33)	9.7 (8.4, 11.2)	40 (33, 48)	7.3 (6.1, 8.6)	-25.4 (-40.2, -7.7)
Zimbabwe	428 (377, 479)	10.4 (9.1, 11.6)	708 (608, 816)	10.5 (9.1, 11.9)	0.9 (-17, 21.5)
Western sub-Saharan Africa	8393 (7594, 9250)	9.7 (8.8, 10.7)	12890 (11719, 14193)	7.7 (7.1, 8.5)	-20.5 (-27.9, -11.3)
Benin	289 (255, 325)	14.5 (12.8, 16.2)	497 (414, 589)	11.5 (9.7, 13.5)	-20.7 (-34.5, -4)
Burkina Faso	664 (537, 773)	15.7 (12.8, 18.1)	1055 (903, 1218)	12.8 (11, 14.8)	-18.2 (-32.4, 4.4)
Cameroon	626 (540, 704)	14.6 (12.6, 16.4)	1210 (987, 1452)	11.6 (9.6, 13.8)	-20.8 (-35.4, -4.6)
Cape Verde	56 (52, 61)	24.4 (22.3, 26.4)	69 (63, 76)	15.6 (14.2, 17.2)	-36.1 (-43.5, -27.9)
Chad	369 (320, 423)	13.1 (11.4, 15)	677 (565, 799)	13.5 (11.3, 15.8)	3 (-13.6, 24.6)
Côte d'Ivoire	258 (224, 294)	6.7 (5.9, 7.6)	507 (431, 599)	5.5 (4.7, 6.4)	-19.1 (-33, -2.9)
The Gambia	24 (20, 29)	7.2 (6.1, 8.5)	49 (42, 57)	5.7 (4.9, 6.5)	-21.9 (-35.4, -5)
Ghana	658 (560, 758)	11.1 (9.5, 12.7)	1069 (928, 1220)	7.7 (6.7, 8.7)	-30.7 (-42.5, -17)

Guinea	484 (430, 544)	14·2 (12·7, 16)	782 (666, 908)	14·5 (12·5, 16·8)	1·9 (-16·5, 22·2)
Guinea-Bissau	87 (73, 103)	21·7 (18·3, 25·6)	99 (84, 117)	15·2 (13, 17·6)	-30·2 (-41·9, -15·1)
Liberia	142 (123, 166)	12·8 (11·1, 14·7)	189 (160, 222)	10·6 (9·1, 12·4)	-16·6 (-30·8, 0·7)
Mali	953 (848, 1070)	22·9 (20·4, 25·7)	1201 (1002, 1415)	14·6 (12·3, 17·2)	-36·3 (-46·4, -23·5)
Mauritania	150 (132, 170)	14·7 (13, 16·7)	178 (147, 212)	9·6 (8, 11·5)	-34·6 (-45·8, -21·4)
Niger	403 (322, 481)	14·6 (11·9, 17·4)	786 (636, 943)	11·9 (9·8, 14·2)	-18·5 (-32·3, 0·5)
Nigeria	2337 (1776, 3003)	5·6 (4·3, 7)	2957 (2168, 4096)	4 (3, 5·4)	-28 (-47·4, -0·3)
São Tomé and Príncipe	10 (9, 11)	14·4 (13, 16·2)	15 (12, 17)	15·5 (12·8, 18·4)	7·4 (-13·7, 31·1)
Senegal	458 (402, 522)	14·5 (12·7, 16·5)	802 (686, 933)	12 (10·2, 13·8)	-17·5 (-30·4, -3)
Sierra Leone	261 (207, 313)	13·5 (10·8, 16·1)	390 (331, 455)	12·2 (10·4, 14·1)	-9·4 (-26·6, 18·3)
Togo	163 (143, 184)	13·4 (11·8, 15·1)	356 (294, 423)	11·3 (9·4, 13·2)	-15·9 (-30·5, 1·7)
Eastern sub-Saharan Africa	8340 (7311, 9313)	10·6 (9·5, 11·8)	10056 (9361, 10804)	6·4 (5·9, 6·8)	-40·2 (-46·5, -32·8)
Burundi	297 (244, 367)	13·1 (11, 16)	305 (247, 371)	7·4 (6·1, 8·8)	-43·4 (-53·7, -32·8)
Comoros	22 (19, 26)	10·6 (9, 12·6)	28 (23, 33)	6·2 (5·2, 7·3)	-41·6 (-52·8, -28·7)
Djibouti	14 (11, 20)	9·2 (7·1, 12·2)	34 (24, 46)	6·1 (4·4, 8)	-33·9 (-51·5, -9)
Eritrea	163 (125, 197)	15·9 (13, 18·7)	220 (180, 263)	9·1 (7·6, 10·7)	-42·6 (-53·1, -27·4)
Ethiopia	3041 (2415, 3812)	14·2 (11·5, 17·5)	2222 (1952, 2623)	5·5 (4·8, 6·5)	-61·4 (-69·3, -52·3)
Kenya	841 (727, 965)	9·9 (8·6, 11·3)	1919 (1732, 2170)	9 (8·2, 10·2)	-8·8 (-17·2, -0·9)
Madagascar	499 (442, 564)	9·2 (8·2, 10·5)	715 (582, 855)	6·6 (5·4, 7·9)	-28·4 (-41·3, -13·9)
Malawi	198 (130, 241)	5·2 (3·6, 6·1)	232 (200, 266)	3·3 (2·8, 3·7)	-37 (-48·8, -8·7)
Mozambique	473 (407, 547)	8·2 (7·1, 9·4)	687 (577, 798)	6·7 (5·7, 7·7)	-18·5 (-33·6, 1·2)
Rwanda	390 (326, 452)	13 (10·8, 15)	308 (255, 365)	5·5 (4·6, 6·4)	-57·6 (-66·1, -48·4)
Somalia	316 (192, 443)	11·8 (8·1, 15·8)	562 (426, 730)	8·7 (6·7, 11)	-26·4 (-46·6, 8·9)
South Sudan	257 (172, 359)	10·6 (7·6, 14·3)	302 (227, 396)	8 (6·1, 10·2)	-25 (-46·2, 9·2)
Tanzania	966 (739, 1156)	8·7 (6·9, 10·3)	1378 (1174, 1597)	5·8 (4·9, 6·6)	-33·6 (-45·6, -15·7)
Uganda	501 (429, 585)	7·6 (6·5, 8·8)	692 (594, 793)	5·1 (4·4, 5·9)	-32·5 (-44·6, -17·5)
Zambia	357 (294, 433)	12 (10·1, 14·5)	446 (374, 531)	6·9 (5·8, 8·2)	-42·6 (-52·6, -30·6)
Central sub-Saharan Africa	2477 (2119, 2854)	10·8 (9·4, 12·4)	3555 (3106, 4009)	7·1 (6·3, 8)	-34·3 (-43·2, -24·4)
Angola	542 (421, 657)	13·4 (10·8, 16)	706 (586, 829)	6·7 (5·6, 7·9)	-49·5 (-59, -36·4)
Central African Republic	177 (141, 210)	14·8 (12·3, 17·3)	225 (176, 273)	10·4 (8·3, 12·3)	-30 (-42·7, -15·6)
Congo	145 (126, 166)	13 (11·5, 14·8)	181 (150, 215)	7·3 (6·2, 8·5)	-43·7 (-54·1, -31·5)

DR Congo	1529 (1264, 1810)	9·8 (8·2, 11·5)	2365 (1953, 2772)	7·1 (6, 8·3)	-27·4 (-40·8, -10·9)
Equatorial Guinea	30 (23, 37)	14·7 (11·8, 18·2)	20 (14, 28)	4·5 (3·3, 6·1)	-69·5 (-78·6, -56·6)
Gabon	54 (44, 64)	9·6 (7·8, 11·3)	58 (49, 67)	5·7 (4·9, 6·5)	-40·5 (-50·8, -27·4)

Appendix Table 2. Deaths due to stomach cancer in 1990 and 2017 for both sexes and percentage change of age-standardised rates by country and region

	1990		2017		Percentage change in age-standardised rates between 1990 and 2017
	Counts (95% UI)	Rate (95% UI)	Counts (95% UI)	Rate (95% UI)	
Global	769069 (752137, 794640)	19.3 (18.9, 20)	864989 (848254, 884655)	11 (10.8, 11.2)	-43.2 (-45.1, -41.4)
High-income North America	21948 (21718, 22213)	5.9 (5.9, 6)	22159 (21591, 22750)	3.6 (3.5, 3.7)	-40 (-41.7, -38.3)
Canada	3429 (3348, 3519)	10.3 (10.1, 10.6)	4401 (4110, 4698)	6.3 (5.9, 6.7)	-39.1 (-43.2, -34.4)
Greenland	7 (6, 8)	20.7 (19.1, 22.3)	8 (7, 8)	11.7 (10.7, 12.8)	-43.5 (-49.6, -36.5)
USA	18511 (18305, 18748)	5.5 (5.4, 5.6)	17751 (17297, 18237)	3.2 (3.1, 3.3)	-41.5 (-43.2, -39.6)
Australasia	2025 (1983, 2071)	8.4 (8.3, 8.6)	2233 (2052, 2429)	4.4 (4.1, 4.8)	-47.4 (-51.7, -42.8)
Australia	1628 (1590, 1668)	8.2 (8, 8.4)	1880 (1707, 2071)	4.4 (4, 4.9)	-45.9 (-51, -40.3)
New Zealand	397 (383, 412)	9.9 (9.5, 10.2)	353 (331, 379)	4.6 (4.3, 4.9)	-53.8 (-56.9, -50.1)
High-income Asia-Pacific	66062 (65266, 66836)	32.8 (32.4, 33.2)	68042 (65688, 71099)	14.2 (13.7, 14.8)	-56.7 (-58.3, -54.7)
Brunei	23 (21, 25)	22.8 (20.9, 24.8)	32 (29, 35)	10.9 (9.9, 12)	-52.2 (-57.8, -45.8)
Japan	50929 (50297, 51533)	29.9 (29.6, 30.3)	55885 (54141, 58225)	14.2 (13.8, 14.8)	-52.5 (-54.1, -50.5)
Singapore	382 (369, 395)	17.7 (17.1, 18.3)	336 (312, 360)	5.1 (4.7, 5.5)	-71.2 (-73.4, -68.9)
South Korea	14728 (14376, 15104)	47.1 (46, 48.3)	11790 (10778, 12821)	14.1 (12.9, 15.3)	-70.1 (-72.7, -67.2)
Western Europe	85510 (84636, 86423)	14.1 (13.9, 14.2)	62213 (59851, 64525)	6.4 (6.2, 6.7)	-54.3 (-56, -52.6)
Andorra	5 (5, 6)	9.4 (8.3, 10.7)	8 (7, 9)	5.8 (5, 6.5)	-38.5 (-48.6, -27.3)
Austria	1901 (1850, 1952)	15.3 (14.9, 15.7)	1095 (1022, 1166)	5.8 (5.4, 6.2)	-62.1 (-64.6, -59.3)
Belgium	1982 (1918, 2049)	12.3 (11.9, 12.7)	1304 (1213, 1406)	5.3 (4.9, 5.7)	-57.1 (-60.4, -53.5)
Cyprus	71 (64, 78)	8.3 (7.6, 9.1)	119 (106, 133)	6.2 (5.5, 6.9)	-25.4 (-35.3, -14.2)
Denmark	743 (723, 763)	8.8 (8.6, 9)	570 (530, 614)	4.9 (4.6, 5.3)	-44 (-48.1, -39.5)
Finland	939 (916, 966)	12.8 (12.5, 13.2)	581 (542, 626)	4.7 (4.3, 5)	-63.7 (-66.4, -60.8)
France	9697 (9439, 10001)	10.9 (10.6, 11.2)	7386 (6837, 7985)	5 (4.6, 5.4)	-54.3 (-57.8, -50.6)
Germany	19202 (18724, 19684)	14.4 (14.1, 14.8)	13519 (12254, 14963)	6.8 (6.2, 7.6)	-52.6 (-57.2, -47.3)
Greece	1727 (1670, 1785)	11.1 (10.8, 11.5)	1878 (1745, 2020)	7.5 (6.9, 8.1)	-32.9 (-38, -27.4)
Iceland	39 (37, 41)	13.2 (12.6, 13.9)	28 (26, 30)	5 (4.7, 5.3)	-62.1 (-65.2, -59.2)
Ireland	554 (535, 574)	13.1 (12.7, 13.6)	463 (427, 503)	6.2 (5.8, 6.8)	-52.4 (-56.4, -48.2)
Israel	521 (501, 542)	10.7 (10.2, 11.1)	663 (615, 721)	5.7 (5.3, 6.2)	-46.1 (-50.2, -41.8)
Italy	17857 (17421, 18279)	19.3 (18.8, 19.7)	12117 (11267, 12996)	7.7 (7.2, 8.3)	-60 (-62.9, -57.1)
Luxembourg	69 (65, 72)	12.2 (11.7, 12.8)	54 (48, 60)	5.4 (4.7, 5.9)	-56.2 (-61.3, -50.8)

Malta	50 (48, 53)	11·8 (11·2, 12·4)	56 (52, 60)	6·2 (5·7, 6·6)	-47·8 (-51·7, -43·3)
Netherlands	2765 (2698, 2845)	13·3 (12·9, 13·6)	2422 (2268, 2582)	6·9 (6·5, 7·3)	-48 (-51·6, -44·4)
Norway	793 (781, 807)	11·1 (10·9, 11·3)	444 (428, 464)	4·5 (4·3, 4·7)	-59·3 (-60·9, -57·6)
Portugal	3611 (3508, 3721)	26·3 (25·6, 27)	2829 (2632, 3019)	11·5 (10·7, 12·3)	-56 (-59·6, -52·6)
Spain	8231 (8012, 8440)	14·6 (14·2, 14·9)	7009 (6530, 7505)	6·8 (6·3, 7·3)	-53·4 (-56·7, -49·8)
Sweden	1441 (1403, 1482)	8·9 (8·7, 9·2)	839 (793, 886)	3·8 (3·6, 4)	-57·6 (-60·1, -55)
Switzerland	1003 (972, 1033)	9·1 (8·8, 9·3)	688 (636, 744)	3·8 (3·5, 4·1)	-58·1 (-61·6, -54·4)
United Kingdom	12227 (12099, 12372)	12·6 (12·5, 12·8)	8077 (7931, 8256)	6 (5·9, 6·1)	-52·6 (-53·6, -51·4)
Southern Latin America	9220 (9015, 9437)	19·9 (19·5, 20·3)	10203 (9515, 10988)	12·3 (11·5, 13·2)	-38·3 (-42·8, -33·1)
Argentina	5163 (4982, 5348)	15·9 (15·4, 16·5)	5295 (4750, 5901)	9·8 (8·8, 11)	-38·3 (-45, -30·6)
Chile	3223 (3130, 3322)	32·7 (31·8, 33·7)	4150 (3720, 4614)	17·8 (16, 19·9)	-45·4 (-51·2, -39·1)
Uruguay	833 (803, 866)	20·8 (20·1, 21·6)	757 (681, 835)	13·5 (12·1, 14·9)	-35·1 (-42·3, -27·9)
Eastern Europe	76543 (75068, 77816)	26·6 (26, 27)	43943 (42870, 45173)	12·8 (12·5, 13·1)	-51·9 (-52·9, -50·8)
Belarus	4022 (3910, 4129)	30·3 (29·5, 31·1)	2123 (1968, 2280)	13·3 (12·3, 14·2)	-56·2 (-59·5, -53)
Estonia	536 (521, 553)	25·6 (24·8, 26·3)	289 (253, 326)	10·8 (9·5, 12·3)	-57·7 (-63, -52·2)
Latvia	882 (858, 907)	23·9 (23·2, 24·5)	489 (438, 540)	12·1 (10·8, 13·4)	-49·3 (-54·7, -43·6)
Lithuania	1123 (1092, 1155)	24·1 (23·4, 24·8)	742 (691, 798)	12·8 (11·9, 13·8)	-46·8 (-50·6, -42·8)
Moldova	816 (790, 846)	17·7 (17·2, 18·3)	505 (478, 534)	8·9 (8·4, 9·4)	-49·8 (-52·9, -46·6)
Russia	51964 (50970, 52899)	27·9 (27·4, 28·4)	30566 (29862, 31332)	13·1 (12·8, 13·4)	-53·1 (-53·9, -52·1)
Ukraine	17198 (16629, 17749)	23·4 (22·7, 24·1)	9230 (8725, 9828)	12·2 (11·5, 13)	-48 (-51·2, -44·6)
Central Europe	25293 (24762, 25750)	16·8 (16·5, 17·1)	18570 (18014, 19135)	8·6 (8·4, 8·9)	-48·7 (-50·5, -46·8)
Albania	306 (289, 323)	14·1 (13·3, 14·9)	446 (369, 535)	10·6 (8·8, 12·7)	-24·4 (-37·9, -7·9)
Bosnia and Herzegovina	518 (494, 544)	12·7 (12·1, 13·3)	580 (531, 628)	9·7 (8·9, 10·5)	-23·8 (-31·2, -16·1)
Bulgaria	2220 (2131, 2309)	17·4 (16·7, 18)	1343 (1246, 1441)	9·1 (8·4, 9·7)	-47·8 (-51·9, -43·2)
Croatia	1354 (1301, 1402)	21 (20·2, 21·7)	806 (758, 860)	8·9 (8·4, 9·5)	-57·5 (-60·4, -54)
Czech Republic	2504 (2434, 2577)	17·9 (17·4, 18·4)	1251 (1168, 1340)	6 (5·6, 6·4)	-66·5 (-68·9, -64·1)
Hungary	3002 (2884, 3122)	19·9 (19·1, 20·7)	1621 (1516, 1725)	8·3 (7·7, 8·8)	-58·4 (-61·9, -54·7)
Macedonia	359 (334, 384)	19·1 (17·8, 20·5)	387 (354, 424)	11·4 (10·4, 12·5)	-40·4 (-47·1, -33·2)
Montenegro	47 (42, 55)	7·6 (6·7, 8·7)	62 (56, 69)	6·2 (5·5, 6·9)	-18·8 (-32·8, -3·6)
Poland	7973 (7781, 8165)	17·6 (17·2, 18)	6178 (5776, 6580)	8·8 (8·3, 9·4)	-49·7 (-52·9, -46·3)
Romania	4051 (3874, 4209)	14·2 (13·6, 14·7)	3516 (3310, 3743)	9·5 (8·9, 10·1)	-33·1 (-37·9, -27·6)

Serbia	1441 (1288, 1630)	12·7 (11·4, 14·2)	1302 (1204, 1405)	8·1 (7·5, 8·7)	-36 (-44·4, -26·8)
Slovakia	1021 (980, 1062)	16·8 (16·2, 17·5)	716 (655, 785)	7·9 (7·3, 8·7)	-52·8 (-57·3, -48)
Slovenia	498 (479, 517)	20·1 (19·3, 20·8)	363 (336, 392)	8·2 (7·6, 8·9)	-59·1 (-62·5, -55·3)
Central Asia	11278 (11040, 11524)	23·5 (23, 24)	10331 (9891, 10769)	14·3 (13·8, 14·9)	-39 (-41·7, -36·4)
Armenia	563 (535, 593)	20·3 (19·4, 21·3)	527 (498, 554)	12·7 (12, 13·3)	-37·7 (-41·9, -32·8)
Azerbaijan	1216 (1155, 1279)	23·6 (22·5, 24·8)	1740 (1530, 1947)	20·2 (17·9, 22·5)	-14·5 (-25, -3·5)
Georgia	937 (887, 989)	14·9 (14·1, 15·7)	851 (806, 902)	14·3 (13·5, 15·1)	-3·9 (-11·4, 4)
Kazakhstan	3884 (3755, 4013)	29·6 (28·6, 30·6)	2182 (2029, 2343)	13 (12·1, 13·9)	-56·1 (-59, -53)
Kyrgyzstan	873 (829, 923)	28·3 (26·9, 29·9)	616 (580, 655)	14·2 (13·4, 15·1)	-49·8 (-53·2, -45·8)
Mongolia	640 (591, 695)	62·8 (58·4, 67·9)	760 (680, 849)	37·6 (33·8, 41·8)	-40·1 (-47·2, -32·5)
Tajikistan	680 (652, 708)	23·8 (22·8, 24·8)	904 (811, 995)	17·8 (16, 19·7)	-24·9 (-33, -16·5)
Turkmenistan	385 (371, 399)	19·7 (19, 20·4)	365 (339, 398)	9·8 (9·1, 10·6)	-50·2 (-54·2, -45·5)
Uzbekistan	2101 (2028, 2180)	18 (17·4, 18·7)	2385 (2135, 2683)	10·9 (9·8, 12·2)	-39·3 (-45·9, -31·4)
Central Latin America	12960 (12786, 13135)	16 (15·7, 16·2)	21226 (20432, 22007)	9·3 (9, 9·7)	-41·6 (-43·8, -39·4)
Colombia	4108 (4006, 4207)	24·4 (23·8, 25)	5761 (5186, 6385)	10·7 (9·6, 11·8)	-56·2 (-60·5, -51·4)
Costa Rica	591 (575, 608)	34·4 (33·4, 35·3)	838 (784, 895)	17·2 (16·1, 18·4)	-49·8 (-53·5, -46)
El Salvador	406 (384, 431)	13·9 (13·1, 14·7)	773 (653, 895)	13·5 (11·4, 15·6)	-2·7 (-17·4, 13·2)
Guatemala	757 (734, 781)	22·7 (21·9, 23·4)	2025 (1832, 2219)	19·4 (17·6, 21·2)	-14·5 (-23·1, -5·6)
Honduras	173 (151, 195)	8·4 (7·4, 9·4)	411 (338, 495)	7·3 (6, 8·8)	-13·3 (-29·2, 8·4)
Mexico	4828 (4754, 4904)	11·6 (11·4, 11·7)	8118 (7942, 8320)	7·3 (7·1, 7·5)	-37 (-38·7, -35·2)
Nicaragua	203 (188, 221)	12·9 (11·9, 14)	357 (318, 399)	8 (7·1, 8·9)	-38·3 (-46·2, -29·8)
Panama	198 (190, 206)	13·3 (12·8, 13·9)	346 (322, 369)	8·7 (8·1, 9·3)	-34·5 (-39·6, -29·2)
Venezuela	1694 (1640, 1750)	18·2 (17·7, 18·8)	2598 (2267, 2960)	9·7 (8·4, 11)	-46·9 (-53·6, -39·4)
Andean Latin America	5351 (5110, 5603)	26·7 (25·5, 27·9)	9130 (8408, 9901)	17·1 (15·7, 18·5)	-35·9 (-41·4, -29·7)
Bolivia	1391 (1226, 1590)	45·1 (40·1, 51·2)	2199 (1813, 2655)	27·1 (22·5, 32·6)	-39·9 (-51, -25·8)
Ecuador	1516 (1479, 1557)	29 (28·2, 29·8)	2579 (2360, 2828)	18 (16·5, 19·7)	-38 (-43·4, -31·6)
Peru	2445 (2265, 2618)	20·8 (19·3, 22·3)	4353 (3795, 4919)	14·2 (12·3, 16)	-32 (-41·7, -20·2)
Caribbean	2862 (2722, 3022)	11 (10·5, 11·6)	3684 (3438, 3966)	7·3 (6·8, 7·8)	-34·1 (-38·6, -29·3)
Antigua and Barbuda	8 (7, 8)	14·4 (13·5, 15·3)	9 (8, 9)	8·7 (8·1, 9·4)	-39·4 (-44·7, -33·6)
The Bahamas	19 (18, 21)	12·6 (11·9, 13·3)	29 (26, 32)	8·1 (7·4, 8·9)	-35·5 (-41·6, -28)
Barbados	48 (46, 51)	15·3 (14·6, 16)	41 (37, 45)	8·3 (7·7, 9·1)	-45·4 (-50·6, -39·3)

Belize	11 (10, 12)	12·1 (11·2, 13·1)	22 (21, 23)	8·6 (8·1, 9·2)	-28·8 (-35·8, -21·2)
Bermuda	7 (7, 8)	11·3 (10·6, 12·1)	6 (6, 7)	5 (4·6, 5·4)	-56·3 (-60·6, -51·8)
Cuba	787 (763, 812)	7·6 (7·3, 7·8)	986 (890, 1097)	5·2 (4·7, 5·8)	-31·2 (-38, -23·4)
Dominica	16 (15, 17)	21·9 (20·7, 23·2)	15 (14, 16)	15·9 (14·7, 17·1)	-27·6 (-33·8, -20·8)
Dominican Republic	271 (249, 294)	7·3 (6·7, 7·9)	651 (562, 742)	7·1 (6·1, 8·1)	-2·4 (-17·2, 14·2)
Grenada	10 (10, 11)	14·1 (13·3, 15)	14 (13, 14)	8·4 (7·8, 9)	-40·4 (-45·5, -34·7)
Guyana	40 (38, 42)	10·7 (10·1, 11·2)	40 (35, 44)	6·8 (6·1, 7·6)	-36 (-43·4, -27·8)
Haiti	743 (617, 891)	24·4 (20·5, 29·2)	994 (800, 1221)	16·2 (13·2, 19·7)	-33·5 (-45·2, -19·3)
Jamaica	256 (241, 272)	13·8 (13, 14·7)	267 (232, 309)	9·2 (8, 10·7)	-33·5 (-43·2, -22·1)
Puerto Rico	399 (385, 414)	10·7 (10·3, 11·1)	313 (291, 335)	4·3 (4, 4·6)	-60·2 (-63·3, -56·8)
Saint Lucia	16 (15, 17)	18 (17·1, 18·9)	21 (20, 23)	10·2 (9·5, 10·9)	-43·4 (-47·9, -38·4)
Saint Vincent and the Grenadines	10 (10, 11)	13·9 (13·1, 14·7)	13 (12, 14)	9·6 (8·9, 10·3)	-31·1 (-37·2, -24·7)
Suriname	23 (21, 25)	9·4 (8·7, 10)	36 (32, 39)	6·4 (5·7, 7)	-31·9 (-40·1, -23·1)
Trinidad and Tobago	91 (86, 95)	10·9 (10·4, 11·4)	80 (67, 94)	4·6 (3·8, 5·4)	-57·8 (-64·9, -49·6)
Virgin Islands	9 (9, 10)	11·4 (10·5, 12·2)	16 (13, 18)	8·6 (7·2, 9·6)	-24·6 (-37·5, -13·1)
Tropical Latin America	14695 (14434, 14953)	16·8 (16·5, 17·1)	21140 (20734, 21550)	9·3 (9·1, 9·4)	-44·9 (-46·3, -43·6)
Brazil	14453 (14193, 14707)	16·9 (16·6, 17·2)	20708 (20316, 21124)	9·3 (9·1, 9·5)	-45·2 (-46·6, -44)
Paraguay	242 (223, 262)	11·4 (10·5, 12·3)	432 (367, 516)	8·4 (7·2, 10)	-25·8 (-38·3, -10·4)
East Asia	295718 (284777, 312773)	33·6 (32·4, 35·7)	371288 (356398, 387201)	18·7 (17·9, 19·5)	-44·5 (-48·7, -41·0)
China	284772 (274485, 301470)	34·2 (33, 36·2)	355379 (340850, 371542)	18·8 (18·1, 19·7)	-44·9 (-49·4, -41·4)
North Korea	3484 (2869, 4142)	21·3 (17·6, 25)	6401 (5220, 7708)	20·6 (16·9, 24·8)	-3·6 (-24·9, 21·8)
Taiwan (Province of China)	2535 (2462, 2607)	16·3 (15·9, 16·7)	3527 (3320, 3745)	9·2 (8·6, 9·7)	-43·8 (-47·2, -39·8)
Southeast Asia	31675 (29163, 34305)	12·7 (11·7, 13·8)	38871 (36283, 41869)	7 (6·6, 7·6)	-44·7 (-49·7, -39·4)
Cambodia	895 (736, 1064)	20·3 (16·7, 24·1)	1069 (915, 1268)	10·2 (8·9, 12)	-49·5 (-57·4, -39·6)
Indonesia	10380 (9179, 11593)	11·1 (9·8, 12·6)	15210 (13759, 17001)	8 (7·3, 8·9)	-27·6 (-36, -18·7)
Laos	393 (317, 477)	19·3 (15·7, 23·2)	352 (289, 426)	9·1 (7·5, 10·9)	-52·9 (-62·6, -41·5)
Malaysia	997 (909, 1090)	12 (11, 13·1)	1599 (1409, 1799)	7·1 (6·3, 8)	-40·6 (-49·9, -30·8)
Maldives	7 (6, 8)	8 (6·8, 9·2)	6 (6, 7)	2·4 (2·2, 2·6)	-70·3 (-75·5, -63·9)
Mauritius	96 (91, 100)	13·6 (12·9, 14·3)	104 (96, 112)	6·6 (6·1, 7·1)	-51·8 (-56·2, -47·3)
Myanmar	5261 (4278, 6433)	23·1 (19, 28·1)	4489 (3815, 5370)	10·7 (9·1, 12·7)	-53·7 (-62·9, -43·9)
Philippines	1950 (1839, 2066)	7 (6·6, 7·4)	2722 (2378, 3093)	4·2 (3·7, 4·7)	-40·3 (-48·1, -31·1)

Sri Lanka	861 (794, 929)	8·6 (7·9, 9·3)	938 (783, 1099)	4·1 (3·4, 4·7)	-52·6 (-61·2, -43·4)
Seychelles	7 (6, 7)	11·4 (10·4, 12·5)	6 (5, 6)	5·5 (5·1, 6)	-51·5 (-57·3, -44·8)
Thailand	3179 (2930, 3430)	9·1 (8·4, 9·8)	4209 (3767, 4756)	4·4 (3·9, 4·9)	-52·1 (-58·4, -44·3)
East Timor	36 (29, 44)	13·6 (11·2, 16·4)	65 (52, 80)	8·8 (7·2, 10·8)	-35 (-48·1, -19·2)
Vietnam	7574 (6692, 8504)	18·3 (16·2, 20·6)	8051 (7027, 9272)	8·9 (7·9, 10·2)	-51·2 (-59·7, -41·3)
Oceania	483 (407, 562)	16·4 (14·2, 18·8)	913 (758, 1077)	14 (11·9, 16·1)	-14·5 (-24·8, -3·4)
American Samoa	4 (3, 4)	16·6 (15, 18·1)	5 (4, 5)	12·9 (11·4, 14·4)	-22·2 (-33·4, -9·9)
Federated States of Micronesia	7 (6, 9)	15·8 (13·5, 18·4)	7 (6, 9)	12·1 (10·3, 14·1)	-23·9 (-36·9, -7·5)
Fiji	22 (20, 25)	6·8 (6, 7·5)	37 (32, 42)	5·8 (5·1, 6·6)	-13·5 (-26·5, 3·2)
Guam	4 (4, 5)	6·1 (5·7, 6·6)	8 (8, 9)	5 (4·5, 5·4)	-19·4 (-28·3, -9·2)
Kiribati	6 (5, 6)	15·5 (14·1, 17·1)	7 (6, 8)	11·8 (10·3, 13·5)	-23·8 (-35, -10·8)
Marshall Islands	3 (3, 3)	19·2 (17, 21·6)	5 (4, 5)	15·7 (13·5, 18·3)	-18 (-29·3, -4·9)
Northern Mariana Islands	2 (1, 2)	10·6 (9·3, 12·3)	3 (3, 3)	6·6 (6, 7·4)	-37·6 (-48·3, -25·9)
Papua New Guinea	352 (285, 421)	18·9 (15·6, 22·3)	705 (564, 856)	16·2 (13·2, 19·2)	-14·6 (-27·3, -0·5)
Samoa	10 (8, 11)	12·1 (10·3, 14·1)	14 (12, 16)	10·8 (9·3, 12·4)	-10·7 (-25·3, 6·3)
Solomon Islands	23 (19, 28)	17 (14·2, 20·3)	40 (33, 48)	13 (11, 15·4)	-23·5 (-35·3, -9·1)
Tonga	9 (8, 10)	18·5 (17·1, 20·1)	11 (10, 13)	14·4 (12·7, 16·4)	-22·1 (-33·5, -8·2)
Vanuatu	10 (8, 13)	16·5 (13·1, 20·2)	21 (17, 27)	14 (11·1, 17·5)	-15 (-31·7, 5·8)
North Africa and Middle East	23487 (21315, 25441)	14 (12·8, 15·2)	34530 (32838, 36201)	8·8 (8·4, 9·2)	-37·4 (-42·1, -31·9)
Afghanistan	2539 (1505, 3343)	36·9 (22·5, 48·3)	3614 (2880, 4485)	33·6 (27·2, 40·2)	-9·1 (-27·4, 40·5)
Algeria	899 (800, 995)	7·6 (6·8, 8·3)	1428 (1300, 1563)	4·6 (4·2, 5)	-39·8 (-46·3, -31·5)
Bahrain	18 (17, 19)	11·2 (10·4, 12·2)	30 (27, 33)	3·9 (3·5, 4·4)	-64·8 (-69·2, -59·9)
Egypt	1211 (1106, 1336)	4·9 (4·6, 5·4)	1864 (1655, 2091)	3·7 (3·3, 4·2)	-24·3 (-34, -11·8)
Iran	5298 (4875, 5724)	21·9 (20·2, 23·6)	9681 (9363, 10043)	14·9 (14·4, 15·4)	-31·9 (-36·8, -25·9)
Iraq	578 (491, 676)	7·5 (6·4, 8·7)	661 (613, 717)	2·9 (2·7, 3·2)	-61·1 (-67·4, -53·5)
Jordan	104 (90, 120)	7·6 (6·5, 8·6)	217 (192, 246)	4·3 (3·8, 4·9)	-42·8 (-53, -30·9)
Kuwait	27 (25, 29)	4·4 (4·1, 4·7)	48 (44, 52)	2·1 (1·9, 2·3)	-53·2 (-58·1, -47·7)
Lebanon	259 (221, 296)	12·1 (10·4, 13·7)	343 (309, 377)	6 (5·4, 6·6)	-50·3 (-58·1, -40·1)
Libya	134 (115, 157)	7·3 (6·2, 8·5)	279 (241, 321)	6·4 (5·6, 7·3)	-11·6 (-29·2, 10·1)
Morocco	763 (693, 844)	5·6 (5·1, 6·1)	1200 (1014, 1409)	4·1 (3·5, 4·8)	-26·4 (-39·8, -10·7)
Palestine	83 (69, 99)	9·2 (7·7, 10·9)	126 (116, 137)	5·4 (4·9, 5·9)	-41·8 (-52·3, -28·9)

Oman	93 (76, 112)	13·9 (11·5, 16·5)	119 (99, 140)	6·8 (5·8, 8)	-50·7 (-60·4, -37·5)
Qatar	10 (9, 11)	11·1 (9·7, 12·7)	35 (29, 42)	5·1 (4·3, 6·1)	-53·6 (-62·6, -42·3)
Saudi Arabia	440 (364, 541)	7·6 (6·3, 9·3)	614 (544, 701)	4·7 (4·3, 5·3)	-38 (-51, -22·8)
Sudan	1705 (1303, 2094)	18·6 (14·4, 22·7)	2539 (1960, 3156)	14·9 (11·6, 18·4)	-19·8 (-37·2, 2·7)
Syria	318 (283, 354)	6·4 (5·7, 7·1)	498 (426, 580)	4·3 (3·7, 5)	-32·9 (-44·9, -19)
Tunisia	331 (299, 367)	7·2 (6·6, 8)	578 (472, 694)	5 (4·1, 6)	-30·7 (-44·6, -13·5)
Turkey	7527 (6792, 8278)	20·7 (18·6, 22·8)	8022 (7237, 8790)	9·2 (8·3, 10·1)	-55·3 (-61·1, -48·6)
United Arab Emirates	35 (28, 43)	10·2 (8·2, 12·5)	232 (179, 290)	8·8 (7·1, 10·7)	-13·9 (-35·2, 16·8)
Yemen	1099 (737, 1478)	22 (15·3, 29)	2371 (1785, 2991)	19·6 (15·1, 24·3)	-11·1 (-33·4, 26·8)
South Asia	62585 (58209, 67100)	10·7 (9·9, 11·5)	96652 (91276, 101052)	7·5 (7, 7·8)	-30·2 (-36·6, -24·6)
Bangladesh	6112 (5238, 7278)	12·9 (11·1, 15·3)	7688 (6467, 9028)	6·5 (5·5, 7·7)	-49·5 (-61·3, -37·4)
Bhutan	26 (21, 32)	10·4 (8·7, 12·8)	35 (28, 43)	6·1 (4·9, 7·4)	-41·9 (-55·4, -26·9)
India	52117 (48014, 56032)	11·1 (10·1, 11·9)	81573 (76969, 85604)	7·7 (7·3, 8·1)	-30 (-36·3, -23·6)
Nepal	1102 (915, 1330)	11·6 (9·7, 14)	1673 (1410, 1977)	8·1 (6·9, 9·6)	-30·1 (-43·3, -15·1)
Pakistan	3227 (2908, 3604)	5·8 (5·2, 6·4)	5682 (4729, 6729)	5·5 (4·6, 6·5)	-4·1 (-21·1, 15·3)
Southern sub-Saharan Africa	2056 (1936, 2199)	7·5 (7, 8)	2910 (2779, 3052)	5·5 (5·3, 5·8)	-26·2 (-31·3, -21)
Botswana	45 (39, 53)	8·3 (7·2, 9·6)	60 (53, 69)	5 (4·4, 5·7)	-40·2 (-49·8, -28·1)
Lesotho	104 (90, 118)	11 (9·6, 12·5)	114 (95, 134)	10·2 (8·5, 11·9)	-7·9 (-24·2, 11·5)
Namibia	40 (36, 45)	6 (5·4, 6·7)	45 (39, 52)	3·5 (3, 4)	-42·8 (-51·7, -32·2)
South Africa	1402 (1303, 1497)	6·6 (6·1, 7)	1940 (1867, 2022)	4·6 (4·5, 4·8)	-29·8 (-34, -24·7)
Swaziland	29 (25, 33)	10·4 (9, 12)	41 (34, 49)	7·8 (6·5, 9·3)	-25·3 (-40, -8)
Zimbabwe	437 (383, 489)	11·1 (9·8, 12·4)	710 (613, 814)	11·1 (9·7, 12·7)	0·3 (-17·2, 20)
Western sub-Saharan Africa	8626 (7794, 9504)	10·4 (9·5, 11·5)	13311 (12153, 14701)	8·4 (7·7, 9·2)	-19·5 (-27·1, -9·9)
Benin	301 (266, 342)	15·5 (13·7, 17·5)	514 (432, 606)	12·5 (10·6, 14·6)	-19·7 (-33·9, -3·3)
Burkina Faso	668 (543, 775)	16·6 (13·6, 19·1)	1063 (912, 1226)	13·7 (11·8, 15·7)	-17·4 (-31·3, 4·5)
Cameroon	635 (547, 714)	15·7 (13·4, 17·6)	1248 (1018, 1498)	12·6 (10·5, 15·1)	-19·4 (-33·9, -3·3)
Cape Verde	62 (56, 67)	26·5 (24·3, 28·7)	76 (70, 84)	17·1 (15·5, 18·9)	-35·3 (-42·5, -27)
Chad	386 (336, 442)	14·1 (12·3, 16·1)	702 (587, 825)	14·6 (12·3, 17)	4 (-12·5, 25·3)
Côte d'Ivoire	252 (219, 286)	7·2 (6·3, 8)	507 (433, 595)	5·9 (5·1, 6·8)	-17·9 (-31·9, -1·8)
The Gambia	25 (21, 29)	7·9 (6·7, 9·2)	52 (45, 60)	6·2 (5·4, 7·1)	-20·7 (-34·6, -4·4)
Ghana	664 (565, 765)	12 (10·3, 13·7)	1096 (949, 1251)	8·4 (7·3, 9·4)	-30·1 (-41·8, -16·5)

Guinea	492 (438, 553)	15 (13·4, 16·8)	794 (680, 920)	15·3 (13·1, 17·7)	2·2 (-16·1, 22·4)
Guinea-Bissau	86 (72, 103)	22·8 (19·2, 26·9)	99 (84, 116)	16·2 (13·9, 18·7)	-29 (-40·7, -14·3)
Liberia	147 (126, 171)	13·6 (11·8, 15·6)	196 (167, 231)	11·7 (10, 13·6)	-14·2 (-28·5, 3·7)
Mali	937 (832, 1053)	23·8 (21·2, 26·6)	1205 (1009, 1418)	15·4 (13, 18)	-35·1 (-45·4, -22·2)
Mauritania	153 (134, 173)	15·5 (13·7, 17·6)	187 (155, 222)	10·5 (8·7, 12·4)	-32·4 (-43·7, -19·2)
Niger	404 (323, 481)	15·7 (12·8, 18·6)	802 (650, 958)	13 (10·8, 15·4)	-17 (-30·6, 1·9)
Nigeria	2493 (1906, 3180)	6·2 (4·8, 7·7)	3141 (2339, 4302)	4·5 (3·4, 6)	-27·4 (-46·4, -0·5)
São Tomé and Príncipe	10 (9, 11)	15·8 (14·3, 17·6)	15 (13, 18)	17·1 (14·2, 20·2)	8·3 (-12·7, 31·9)
Senegal	473 (416, 538)	15·6 (13·7, 17·6)	843 (720, 974)	13·1 (11·1, 15)	-16·1 (-29, -1·5)
Sierra Leone	274 (217, 327)	14·5 (11·7, 17·2)	406 (346, 471)	13·3 (11·5, 15·4)	-8·1 (-25·3, 19·4)
Togo	164 (144, 186)	14·4 (12·7, 16·2)	362 (300, 429)	12·3 (10·3, 14·3)	-14·9 (-29·3, 3)
Eastern sub-Saharan Africa	8238 (7265, 9178)	11·1 (10, 12·3)	10087 (9391, 10828)	6·8 (6·3, 7·3)	-39·3 (-45·3, -32·5)
Burundi	294 (244, 361)	13·7 (11·6, 16·7)	305 (249, 370)	7·9 (6·6, 9·4)	-42·3 (-52·7, -31·8)
Comoros	22 (19, 26)	11·2 (9·5, 13·2)	28 (24, 34)	6·6 (5·6, 7·8)	-40·8 (-52·1, -28)
Djibouti	14 (10, 19)	9·7 (7·5, 12·9)	34 (24, 45)	6·5 (4·8, 8·4)	-33·4 (-50·7, -9·8)
Eritrea	159 (124, 192)	16·5 (13·8, 19·5)	214 (176, 256)	9·6 (8, 11·2)	-42·1 (-52·7, -28·1)
Ethiopia	2911 (2326, 3629)	14·6 (12, 17·9)	2210 (1945, 2621)	5·8 (5·1, 6·9)	-60·3 (-68·1, -51·2)
Kenya	845 (730, 966)	10·4 (9, 11·9)	1913 (1731, 2151)	9·5 (8·6, 10·8)	-8·6 (-17·1, -0·9)
Madagascar	497 (439, 562)	9·7 (8·6, 11)	707 (575, 845)	7 (5·8, 8·3)	-27·8 (-40·6, -13·3)
Malawi	207 (140, 250)	5·7 (4·1, 6·7)	246 (212, 281)	3·6 (3·1, 4·1)	-37·2 (-48·6, -11·6)
Mozambique	488 (420, 562)	8·9 (7·8, 10·3)	702 (594, 813)	7·2 (6·2, 8·3)	-19 (-33·7, 0·2)
Rwanda	390 (324, 452)	13·7 (11·4, 15·7)	315 (261, 371)	6 (5, 6·9)	-56·6 (-65·3, -47·7)
Somalia	308 (194, 429)	12·5 (8·8, 16·5)	557 (426, 720)	9·2 (7·2, 11·6)	-26·1 (-45·7, 6·1)
South Sudan	260 (178, 359)	11·3 (8·2, 15·1)	300 (226, 391)	8·4 (6·5, 10·8)	-25·4 (-45·9, 6·7)
Tanzania	975 (758, 1168)	9·2 (7·5, 10·9)	1402 (1195, 1618)	6·1 (5·2, 7·1)	-33·4 (-45·3, -16·9)
Uganda	508 (435, 589)	8·1 (7, 9·4)	701 (604, 803)	5·5 (4·8, 6·3)	-32·2 (-44·2, -17·4)
Zambia	356 (296, 434)	12·7 (10·8, 15·4)	445 (375, 532)	7·3 (6·2, 8·7)	-42·3 (-52·1, -30·4)
Central sub-Saharan Africa	2454 (2104, 2827)	11·5 (9·9, 13·1)	3551 (3110, 3990)	7·6 (6·7, 8·5)	-33·9 (-42·7, -24·2)
Angola	529 (416, 635)	14 (11·5, 16·7)	698 (580, 819)	7·2 (6, 8·3)	-48·8 (-58·1, -36·4)
Central African Republic	174 (139, 206)	15·5 (13, 18)	222 (175, 268)	10·9 (8·7, 12·9)	-29·6 (-42, -15·4)
Congo	145 (126, 165)	13·6 (12, 15·4)	181 (151, 212)	7·8 (6·6, 9)	-42·8 (-52·9, -30·9)

DR Congo	1522 (1259, 1802)	10·5 (8·8, 12·2)	2371 (1970, 2775)	7·6 (6·4, 8·8)	-27·3 (-40·5, -11·1)
Equatorial Guinea	29 (23, 36)	15·4 (12·4, 18·9)	20 (14, 28)	4·8 (3·6, 6·5)	-68·6 (-77·7, -56·2)
Gabon	56 (45, 66)	10·1 (8·3, 11·9)	59 (51, 68)	6·1 (5·2, 6·9)	-40·1 (-50·3, -27·3)

Appendix Table 3. DALYs of stomach cancer in 1990 and 2017 for both sexes and percentage change of age-standardised rates by country and region

	1990		2017		Percentage change in age-standardised rates between 1990 and 2017
	Counts (95% UI)	Rate (95% UI)	Counts (95% UI)	Rate (95% UI)	
Global	19143257 (18668093, 19805149)	445.9 (435, 461.2)	19130771 (18738585, 19569409)	235.9 (231.1, 241.3)	-47.1 (-49.0, -45.3)
High-income North America	427610 (422515, 433335)	122.6 (121.1, 124.2)	419819 (407273, 431498)	74.5 (72.3, 76.7)	-39.2 (-41.3, -37.2)
Canada	67245 (65708, 68965)	204.7 (199.9, 209.9)	76140 (70795, 81983)	120.7 (112.2, 129.9)	-41 (-45.3, -36.4)
Greenland	202 (186, 221)	484.1 (446.7, 525.2)	180 (164, 198)	251.8 (229.8, 275.1)	-48 (-54, -41.4)
USA	360153 (355718, 365242)	114 (112.6, 115.6)	343491 (332586, 353797)	68.9 (66.6, 71)	-39.6 (-41.9, -37.3)
Australasia	40199 (39330, 41106)	168.7 (165.1, 172.4)	39703 (36268, 43401)	88.4 (80.7, 96.6)	-47.6 (-52.2, -42.5)
Australia	32169 (31325, 32979)	161.9 (157.8, 165.9)	33169 (29845, 36799)	87.5 (78.5, 97)	-46 (-51.4, -39.9)
New Zealand	8030 (7748, 8325)	203.5 (196.6, 210.7)	6534 (6125, 7022)	93.4 (87.8, 100.1)	-54.1 (-57.2, -50.6)
High-income Asia-Pacific	1553346 (1531220, 1575287)	743.9 (733.5, 754.3)	1099094 (1056842, 1147281)	280 (268.6, 292.3)	-62.4 (-63.8, -60.6)
Brunei	652 (591, 714)	510.9 (463.5, 557.6)	882 (796, 975)	244.3 (222.5, 270.3)	-52.2 (-57.9, -45.8)
Japan	1118980 (1100943, 1136136)	648.6 (638, 658.3)	842005 (812715, 877828)	275.3 (265.7, 286.3)	-57.6 (-59, -55.7)
Singapore	9047 (8727, 9387)	364.6 (352.3, 377.9)	6737 (6228, 7269)	97.5 (90.1, 105.2)	-73.3 (-75.5, -71)
South Korea	424666 (413797, 435760)	1185.4 (1156.6, 1215.1)	249470 (227327, 271801)	297.4 (271.7, 324.1)	-74.9 (-77.2, -72.5)
Western Europe	1593267 (1576488, 1610918)	279.3 (276.3, 282.3)	1025787 (984851, 1066633)	125.4 (120.2, 130.4)	-55.1 (-56.9, -53.3)
Andorra	108 (94, 124)	179.1 (156.3, 206)	141 (122, 162)	107.5 (93, 123.3)	-40 (-51, -29)
Austria	35718 (34806, 36632)	309.8 (301.8, 317.7)	18336 (17041, 19638)	111.4 (103.3, 119.8)	-64 (-66.6, -61.3)
Belgium	33952 (32829, 35070)	221.6 (214.5, 228.7)	20702 (19196, 22366)	98.3 (90.9, 106.3)	-55.6 (-59.2, -51.7)
Cyprus	1470 (1345, 1611)	172.2 (157.8, 188.7)	2324 (2057, 2603)	125.4 (111.1, 140.3)	-27.2 (-37.2, -15.9)
Denmark	14110 (13703, 14517)	183 (177.8, 188.4)	10095 (9382, 10886)	96.2 (89.3, 103.7)	-47.4 (-51.4, -43)
Finland	18500 (18016, 19005)	261.7 (254.9, 268.7)	10044 (9330, 10855)	93.1 (86.5, 100.7)	-64.4 (-67.2, -61.4)
France	169356 (164815, 174674)	207.3 (201.8, 213.5)	117964 (108987, 127303)	98.2 (90.7, 106)	-52.6 (-56.4, -48.6)
Germany	367807 (358745, 377109)	297.1 (289.9, 304.8)	230923 (208347, 257782)	138.5 (124.4, 154.3)	-53.4 (-58.2, -47.9)
Greece	34146 (33049, 35316)	226.7 (219.7, 234.1)	31690 (29493, 34231)	153.8 (143.1, 166.2)	-32.1 (-37.2, -26.5)
Iceland	753 (717, 792)	265.4 (252.5, 279.5)	483 (452, 517)	95.4 (89.1, 101.9)	-64.1 (-66.8, -61.1)
Ireland	10573 (10205, 10963)	255.2 (246.3, 264.7)	8138 (7481, 8885)	114.8 (105.5, 125)	-55 (-58.9, -50.9)
Israel	10127 (9727, 10515)	206 (197.9, 213.7)	12117 (11234, 13102)	114.2 (105.9, 123.6)	-44.6 (-48.9, -39.9)
Italy	329721 (321629, 337868)	372.7 (363.8, 381.6)	190697 (176375, 206017)	147.7 (136.5, 159.7)	-60.4 (-63.4, -57.2)

Luxembourg	1328 (1266, 1394)	242·8 (231·6, 254·6)	928 (820, 1038)	99·7 (88·1, 111·6)	-58·9 (-64·1, -53·7)
Malta	998 (947, 1053)	227·7 (216·3, 240·1)	978 (911, 1053)	116·3 (108·5, 125)	-48·9 (-53, -44·5)
Netherlands	50963 (49633, 52371)	255 (248·5, 261·9)	39643 (37104, 42303)	124·6 (116·6, 133·2)	-51·1 (-54·4, -47·7)
Norway	14287 (14062, 14531)	221·2 (217·7, 224·9)	7527 (7242, 7857)	85·3 (82·2, 88·9)	-61·4 (-62·9, -59·7)
Portugal	74142 (72266, 76302)	544·5 (530·8, 559·9)	50147 (46179, 53700)	241·9 (221·9, 260)	-55·6 (-59·4, -52)
Spain	161553 (157354, 165506)	298·3 (290·9, 305·4)	117793 (109608, 126461)	136·4 (126·9, 146·7)	-54·3 (-57·7, -50·6)
Sweden	25322 (24629, 26005)	175·8 (171·2, 180·3)	13402 (12654, 14226)	70·9 (66·9, 75·3)	-59·7 (-62, -57)
Switzerland	18601 (18022, 19136)	182·9 (177·2, 188·4)	11492 (10585, 12438)	73·1 (67·2, 79·1)	-60 (-63·6, -56·4)
United Kingdom	218196 (215737, 220865)	241·5 (238·8, 244·3)	129160 (126238, 132447)	109·7 (107·2, 112·4)	-54·6 (-55·6, -53·4)
Southern Latin America	203098 (198576, 207625)	425·4 (416·1, 434·8)	203392 (188154, 220430)	253·8 (234·7, 275·1)	-40·4 (-45, -35)
Argentina	114634 (110783, 118629)	345·1 (333·5, 356·9)	109141 (97552, 122304)	210·8 (188·2, 236·3)	-38·9 (-45·9, -30·9)
Chile	71229 (69025, 73387)	677·7 (656·7, 697·6)	80238 (71663, 89963)	347 (310·2, 388·5)	-48·8 (-54·4, -42·5)
Uruguay	17227 (16579, 17908)	446 (429·5, 462·8)	14004 (12456, 15640)	282 (251·3, 315)	-36·8 (-43·9, -29)
Eastern Europe	1915763 (1870174, 1951155)	664·1 (648·5, 676·3)	1014257 (987340, 1043869)	308·7 (300·7, 317·3)	-53·5 (-54·5, -52·5)
Belarus	100992 (98100, 103645)	770·2 (749·1, 789·5)	47313 (43564, 51039)	309·4 (285·3, 333·1)	-59·8 (-63, -56·6)
Estonia	12635 (12223, 13042)	614·8 (595, 634·2)	5699 (4982, 6490)	244 (212·6, 277·8)	-60·3 (-65·4, -54·9)
Latvia	21115 (20465, 21755)	584·6 (566·6, 601·5)	9867 (8798, 11003)	278·3 (247·2, 311·3)	-52·4 (-57·6, -46·9)
Lithuania	26617 (25852, 27421)	580·2 (563·5, 598)	15116 (14048, 16317)	298·2 (276·9, 322·2)	-48·6 (-52·2, -44·5)
Moldova	22437 (21700, 23248)	472·3 (457·3, 489·8)	12858 (12152, 13652)	231·3 (218·3, 244·9)	-51 (-54·2, -47·7)
Russia	1289473 (1257851, 1315916)	684·9 (668, 698·9)	695242 (678582, 712147)	308·4 (301·1, 316)	-55 (-55·9, -54)
Ukraine	442495 (427142, 457174)	617·8 (597·3, 638·1)	228162 (214961, 242907)	321·4 (303·2, 341·9)	-48 (-51·2, -44·5)
Central Europe	578358 (565062, 589710)	379·4 (370·9, 386·5)	379211 (367809, 391374)	189·9 (184, 196)	-50 (-51·8, -48)
Albania	8034 (7595, 8510)	339·9 (320·8, 360·4)	9780 (8034, 11812)	242·6 (200·3, 292·9)	-28·6 (-42·1, -12·6)
Bosnia and Herzegovina	13524 (12806, 14289)	299·8 (285·4, 315·5)	12255 (11199, 13286)	211·8 (193·3, 228·9)	-29·3 (-36·5, -21·9)
Bulgaria	51241 (49091, 53321)	397·7 (382·2, 413·6)	27919 (25868, 30050)	210·3 (194·6, 226·1)	-47·1 (-51·6, -42·2)
Croatia	30216 (29004, 31389)	457·6 (440, 474·6)	14964 (14037, 15999)	182 (170·1, 194·6)	-60·2 (-63·2, -56·8)
Czech Republic	51386 (49903, 52904)	371·3 (360·4, 382)	24026 (22366, 25778)	124·2 (115·5, 133·1)	-66·6 (-69·1, -64)
Hungary	62555 (60193, 65038)	419·5 (403·9, 435·6)	31319 (29127, 33442)	174·6 (162·4, 186·8)	-58·4 (-62, -54·5)
Macedonia	9058 (8438, 9725)	450·4 (419·8, 482·4)	8824 (8041, 9712)	265·5 (242, 291·6)	-41·1 (-47·7, -34)
Montenegro	1091 (951, 1273)	166·8 (145·8, 193·5)	1267 (1129, 1424)	128·4 (114·8, 143·8)	-23 (-36·7, -6·7)
Poland	181591 (176937, 186157)	399·1 (388·8, 409)	126466 (117733, 134747)	193·8 (180·5, 206·8)	-51·5 (-54·7, -47·9)

Romania	100235 (95989, 104313)	344·7 (330·8, 358·2)	74381 (69934, 79420)	219·3 (205·8, 233·8)	-36·4 (-41·1, -30·9)
Serbia	35641 (31717, 40384)	298·6 (267, 335·7)	26791 (24772, 28970)	178·1 (165, 192·2)	-40·3 (-48·7, -31·6)
Slovakia	22878 (21938, 23842)	377·3 (361·5, 393·2)	14764 (13461, 16259)	167·1 (152·6, 183·3)	-55·7 (-60·3, -50·6)
Slovenia	10910 (10449, 11362)	434·8 (416·8, 452·6)	6455 (5949, 6982)	163 (149·8, 176·3)	-62·5 (-65·8, -58·9)
Central Asia	303319 (296618, 309917)	593·4 (580·6, 605·9)	273093 (260966, 285850)	340 (325, 354·6)	-42·7 (-45·3, -40·1)
Armenia	15411 (14636, 16250)	513 (488·2, 539·1)	11503 (10877, 12163)	278·8 (264, 294·3)	-45·7 (-49·6, -41·5)
Azerbaijan	32633 (30841, 34479)	585·5 (555·1, 616·2)	44165 (38653, 49665)	446·8 (392·7, 499·4)	-23·7 (-33·2, -13·5)
Georgia	23905 (22629, 25203)	372·5 (353·5, 392·5)	18848 (17770, 19989)	337·2 (317·8, 357·3)	-9·5 (-16·4, -2)
Kazakhstan	104346 (100757, 107913)	743·1 (718·8, 767·4)	55570 (51597, 59892)	308·7 (287·4, 331·7)	-58·5 (-61·3, -55·2)
Kyrgyzstan	24354 (23044, 25759)	757·8 (718·7, 799)	16870 (15855, 18038)	350·1 (329·4, 372·5)	-53·8 (-57·4, -49·8)
Mongolia	15910 (14642, 17355)	1427·5 (1315·4, 1552·8)	20987 (18685, 23471)	842·9 (754·7, 941)	-41 (-48·1, -33·1)
Tajikistan	18370 (17599, 19177)	600·2 (575·2, 625·5)	26260 (23470, 29149)	438·4 (392·7, 485·5)	-27 (-35·1, -18·5)
Turkmenistan	10441 (10042, 10849)	486 (467·9, 504·5)	10076 (9295, 11001)	238·9 (221·1, 260)	-50·8 (-54·9, -46·1)
Uzbekistan	57949 (55949, 60057)	463·1 (447·5, 479·4)	68814 (61280, 77850)	268·4 (239·2, 302·3)	-42 (-48·6, -33·9)
Central Latin America	307213 (303029, 311526)	333·8 (329·2, 338·5)	487298 (468124, 506160)	203·8 (195·8, 211·7)	-38·9 (-41·4, -36·6)
Colombia	98967 (96575, 101449)	514·9 (502·1, 527·6)	128665 (114902, 144229)	239·5 (213·9, 268·7)	-53·5 (-58·4, -48)
Costa Rica	13205 (12840, 13619)	707·8 (688·4, 728·6)	17828 (16635, 19180)	359·7 (335·4, 386·3)	-49·2 (-53·2, -45)
El Salvador	9572 (9046, 10200)	300·5 (283·5, 320·7)	16426 (13853, 19189)	289 (244·1, 337)	-3·8 (-19·6, 14·2)
Guatemala	19311 (18702, 20014)	471·4 (456·5, 487·4)	47541 (42779, 52455)	409·2 (368·9, 450·5)	-13·2 (-22·6, -3·6)
Honduras	4626 (4010, 5230)	188·4 (163·6, 212·1)	9060 (7371, 11040)	144·9 (118·3, 176·7)	-23·1 (-37·5, -4·4)
Mexico	111535 (109715, 113337)	235·5 (231·8, 239·2)	191047 (186393, 196595)	160·4 (156·5, 165)	-31·9 (-33·8, -29·8)
Nicaragua	5327 (4882, 5813)	293·2 (268·6, 319·6)	8632 (7616, 9772)	179·5 (158·8, 202·5)	-38·8 (-47, -29·6)
Panama	4756 (4552, 4967)	294 (281·2, 306·5)	7585 (7029, 8152)	191·3 (177·5, 205·5)	-34·9 (-40·4, -29·6)
Venezuela	39913 (38622, 41338)	380·1 (367·8, 393·5)	60513 (52644, 69530)	208·4 (181·4, 239·1)	-45·2 (-52·7, -37·1)
Andean Latin America	128878 (122532, 135382)	573·2 (545·7, 602)	193905 (176702, 210939)	353·5 (322·4, 384·4)	-38·3 (-44·2, -31·9)
Bolivia	35202 (30814, 40679)	991·4 (870·4, 1141·6)	48211 (39027, 59099)	544 (441, 663)	-45·1 (-56·8, -31)
Ecuador	34905 (34044, 35867)	601·4 (586·1, 617·4)	53419 (48569, 59079)	355·4 (323·3, 392·8)	-40·9 (-46·4, -34·4)
Peru	58770 (54104, 63068)	446·4 (411·3, 478·6)	92275 (79543, 105271)	298·9 (257·2, 341·1)	-33 (-43·1, -21·1)
Caribbean	65268 (61575, 69462)	238·5 (225·3, 254)	83446 (77493, 90753)	164·4 (152·5, 178·7)	-31·1 (-36·2, -25·2)
Antigua and Barbuda	161 (151, 172)	313·4 (293·6, 333·7)	182 (168, 196)	177·9 (164·8, 192)	-43·2 (-48·4, -37·4)

The Bahamas	500 (471, 529)	290.2 (273.7, 306.7)	720 (651, 792)	181.5 (164.6, 199.8)	-37.5 (-44.1, -30.1)
Barbados	902 (857, 949)	314.3 (298.5, 330.6)	785 (717, 865)	170.3 (155.6, 187)	-45.8 (-51.4, -40)
Belize	247 (228, 268)	250.9 (231.3, 272.9)	553 (521, 588)	193.7 (182.9, 206)	-22.8 (-30.3, -14.4)
Bermuda	153 (144, 164)	235.4 (221.1, 251.6)	116 (106, 126)	96.1 (88.1, 104.9)	-59.2 (-63.3, -54.3)
Cuba	16599 (16062, 17147)	157.4 (152.3, 162.6)	20054 (17872, 22550)	110.5 (98.6, 124.3)	-29.8 (-37.4, -21.3)
Dominica	324 (307, 343)	464.9 (440.7, 490.9)	297 (275, 321)	334.9 (309, 361.1)	-28 (-34.2, -21.2)
Dominican Republic	6705 (6133, 7320)	158.6 (145.1, 172.7)	15719 (13363, 18030)	164.6 (140.1, 188.5)	3.7 (-12.9, 22.3)
Grenada	213 (201, 226)	310 (292.9, 328.3)	262 (243, 280)	183.6 (170.6, 196.6)	-40.8 (-45.7, -35.2)
Guyana	1030 (977, 1084)	239.3 (227, 252.1)	1026 (908, 1153)	156.2 (138.6, 174.8)	-34.7 (-42.5, -25.4)
Haiti	20226 (16678, 24114)	556.7 (461.1, 664.4)	26031 (20629, 31890)	352.2 (281, 431.9)	-36.7 (-48.4, -22.4)
Jamaica	4972 (4680, 5292)	276.3 (260, 294.6)	5668 (4868, 6613)	197 (169.2, 230.3)	-28.7 (-39.6, -16.6)
Puerto Rico	7702 (7411, 7994)	206.2 (198.2, 214.3)	5467 (5064, 5876)	85.2 (78.9, 91.6)	-58.7 (-61.9, -55.2)
Saint Lucia	359 (340, 379)	390.2 (370.2, 412)	460 (425, 497)	218.6 (202.2, 235.8)	-44 (-48.9, -38.9)
Saint Vincent and the Grenadines	224 (212, 238)	300.3 (284, 318.5)	294 (272, 316)	217.2 (201.4, 233.4)	-27.7 (-34.1, -20.8)
Suriname	552 (511, 595)	201.8 (186.8, 216.9)	825 (731, 923)	138 (122.8, 154.3)	-31.6 (-40.6, -21.9)
Trinidad and Tobago	1946 (1849, 2050)	218.6 (207.8, 230)	1650 (1359, 1959)	92 (75.7, 109.3)	-57.9 (-65.7, -49.3)
Virgin Islands	219 (202, 239)	239.2 (220.6, 259.6)	336 (277, 383)	183.4 (152.3, 208.8)	-23.3 (-36.6, -11)
Tropical Latin America	362829 (356305, 369520)	363.5 (356.8, 370.1)	482998 (473844, 492741)	203 (199.3, 207.1)	-44.1 (-45.6, -42.8)
Brazil	357204 (350725, 363869)	366.6 (359.8, 373.2)	473063 (463803, 482562)	203.6 (199.6, 207.7)	-44.5 (-45.9, -43.1)
Paraguay	5625 (5143, 6117)	237.3 (217.6, 257.3)	9936 (8300, 11932)	180.6 (151.4, 216.5)	-23.9 (-38.1, -7)
East Asia	7702886 (7416378, 8143851)	774.9 (747, 820)	8175270 (7834190, 8543708)	389.5 (373.5, 407.2)	-49.7 (-53.3, -46.6)
China	7414666 (7139853, 7840195)	787.3 (758.5, 832.7)	7814923 (7475515, 8187412)	391.7 (374.8, 410.2)	-50.3 (-54, -47)
North Korea	96601 (78953, 117090)	524.2 (432.9, 627.5)	160354 (126080, 198071)	496.8 (394.6, 612.3)	-5.2 (-28.7, 23.7)
Taiwan (Province of China)	63287 (61557, 64980)	361 (351.5, 370.6)	68295 (64051, 73000)	182.7 (171.4, 195.2)	-49.4 (-52.7, -45.7)
Southeast Asia	864202 (791291, 936368)	296.9 (272.6, 321.7)	960904 (893460, 1038037)	154.1 (143.5, 166.3)	-48.1 (-53.3, -42.3)
Cambodia	24889 (20511, 29773)	480.3 (394.5, 573)	26898 (22871, 32054)	222.8 (190.6, 265.6)	-53.6 (-62.1, -43.4)
Indonesia	292447 (259443, 325787)	257.1 (228.1, 286.6)	373166 (337005, 415804)	166.5 (150.6, 185.7)	-35.2 (-43.5, -26.4)
Laos	11028 (8839, 13507)	464.4 (374.2, 565.1)	9236 (7273, 11241)	199.3 (163.4, 241.5)	-57.1 (-66.7, -45.1)
Malaysia	24121 (21992, 26408)	242.8 (221.5, 266.1)	35627 (31109, 40109)	137 (120, 154)	-43.6 (-53.7, -33.5)
Maldives	188 (158, 227)	179.1 (152.2, 211.3)	139 (125, 154)	44.7 (40.3, 49.3)	-75 (-80.1, -69.1)
Mauritius	2330 (2214, 2453)	291.7 (276.9, 306.5)	2305 (2116, 2507)	136.6 (125.9, 148.3)	-53.2 (-57.7, -48.5)

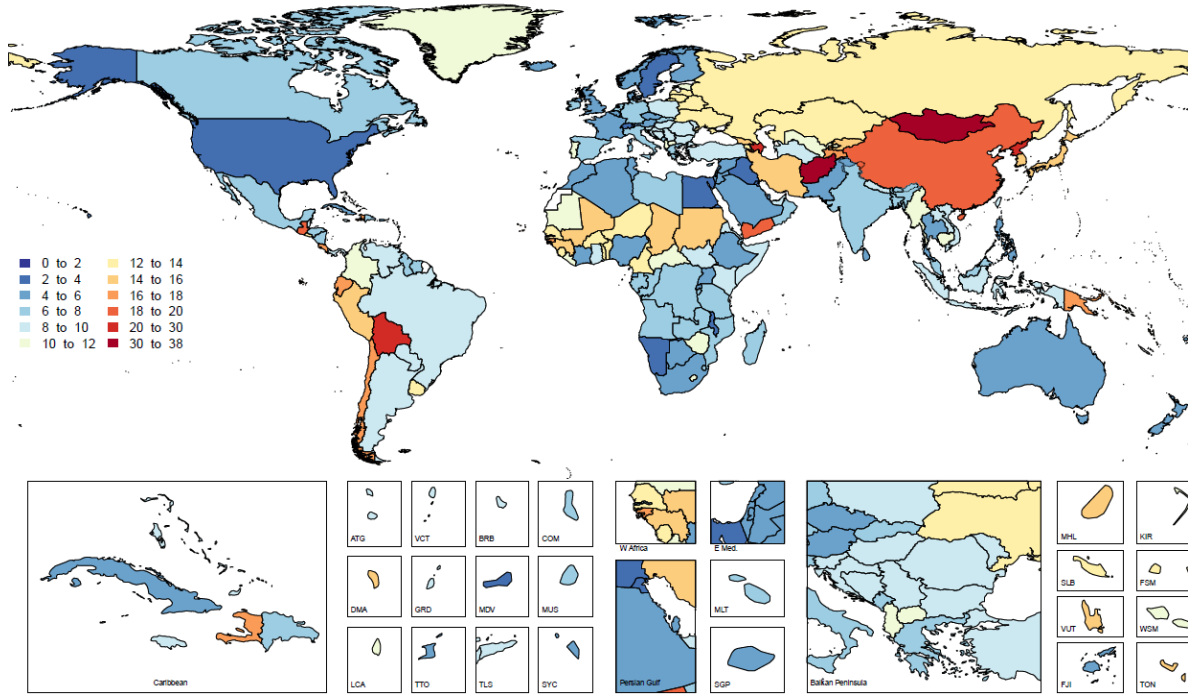
Myanmar	149152 (120414, 183534)	564·9 (456·3, 694·3)	111183 (93545, 134012)	234·4 (198·8, 281)	-58·5 (-67·9, -48·4)
Philippines	52433 (49274, 55868)	152·4 (143·4, 161·9)	71187 (61527, 81765)	91·2 (79·3, 104·1)	-40·2 (-48·9, -30)
Sri Lanka	21103 (19519, 22835)	180·6 (167, 195·2)	20658 (17067, 24562)	82·4 (68·3, 97·7)	-54·4 (-63, -44·4)
Seychelles	156 (141, 170)	270·3 (244, 295·4)	138 (126, 150)	123·7 (113·3, 133·7)	-54·3 (-60·1, -48·2)
Thailand	86008 (79270, 93145)	209·1 (192·3, 226)	99989 (88943, 114310)	102·4 (91·2, 116·5)	-51 (-57·8, -43·3)
East Timor	1101 (889, 1347)	309·1 (252·1, 374)	1501 (1153, 1866)	181·2 (142, 223·8)	-41·4 (-55·4, -25)
Vietnam	198099 (174140, 223327)	454·7 (399·8, 512)	207614 (177123, 244328)	211·9 (182·7, 247·2)	-53·4 (-62, -43)
Oceania	16024 (13276, 18896)	423·8 (356·5, 492·2)	30288 (24766, 36707)	358·4 (297·2, 423·6)	-15·4 (-28·2, -1·9)
American Samoa	98 (89, 107)	361·1 (327·1, 396·3)	128 (113, 143)	278·9 (248, 311)	-22·7 (-33·3, -10)
Federated States of Micronesia	203 (168, 240)	364·7 (305·5, 427·7)	205 (153, 252)	266 (208·2, 319·4)	-27·1 (-43·6, -8·1)
Fiji	630 (555, 708)	145 (128·5, 162·4)	959 (826, 1100)	123·3 (106·5, 141·3)	-15 (-28·7, 1·9)
Guam	110 (101, 121)	125·7 (115·6, 137·3)	200 (182, 219)	110·9 (100·9, 121·7)	-11·7 (-22·2, 0·3)
Kiribati	157 (141, 172)	361·8 (328, 397·8)	219 (183, 258)	277·3 (236·6, 321·6)	-23·4 (-35·7, -8·5)
Marshall Islands	88 (78, 100)	439·3 (386·4, 493·8)	142 (118, 170)	365·6 (306·2, 431·6)	-16·8 (-29·2, -1·8)
Northern Mariana Islands	54 (46, 64)	214·9 (186·6, 253·4)	71 (62, 80)	134 (119·4, 150·1)	-37·6 (-49·1, -25·1)
Papua New Guinea	12120 (9645, 14692)	508 (412·4, 607·4)	24318 (19119, 30246)	417·3 (335·6, 504·4)	-17·9 (-32·1, -1·9)
Samoa	258 (219, 305)	280·3 (237·2, 329·2)	320 (267, 371)	227·7 (192·9, 262·3)	-18·8 (-33·6, -1·8)
Solomon Islands	723 (594, 883)	424·9 (350·5, 511·7)	1222 (999, 1481)	312·5 (259·4, 377·1)	-26·4 (-39·7, -9·9)
Tonga	221 (202, 242)	378·4 (347·6, 412·5)	252 (221, 291)	304·4 (268·1, 350·2)	-19·6 (-31·9, -4)
Vanuatu	305 (230, 403)	383·6 (296·1, 491)	585 (441, 771)	314·6 (241·3, 407·2)	-18 (-36·4, 7·6)
North Africa and Middle East	635667 (571681, 693916)	327·2 (295·3, 356)	857927 (809034, 906399)	189 (179, 198·9)	-42·2 (-46·9, -36·5)
Afghanistan	68794 (37623, 93199)	933·4 (511·9, 1267·1)	113665 (87457, 146424)	836·1 (664·4, 1033·5)	-10·4 (-30·8, 58·3)
Algeria	23364 (20741, 25794)	168·3 (149·6, 185·7)	33303 (30074, 36642)	95·8 (86·6, 105·3)	-43·1 (-49·5, -35·1)
Bahrain	467 (434, 504)	223·1 (206·6, 242)	820 (731, 921)	76·8 (68·8, 85·5)	-65·6 (-70·1, -60·7)
Egypt	32899 (29899, 36476)	106 (96·8, 116·5)	50308 (44640, 56807)	78·7 (69·8, 88·7)	-25·7 (-36, -13·6)
Iran	140206 (128793, 151678)	472·6 (435·6, 510·4)	214818 (207189, 223817)	296·8 (286·3, 308·7)	-37·2 (-41·9, -31·3)
Iraq	16332 (13687, 19352)	182 (153·6, 213·9)	18690 (17176, 20529)	68·4 (63·2, 74·4)	-62·4 (-69, -54·3)
Jordan	3037 (2607, 3518)	178·8 (154, 206·8)	5507 (4860, 6244)	84·1 (74·3, 95·2)	-53 (-61·8, -43·1)
Kuwait	791 (741, 847)	92·8 (86·9, 99·3)	1254 (1136, 1379)	41·6 (37·9, 45·5)	-55·1 (-59·7, -50·2)
Lebanon	6722 (5722, 7806)	275·5 (235·1, 317·5)	7950 (7145, 8830)	125·3 (112·7, 139)	-54·5 (-62·3, -44·7)
Libya	3435 (2932, 4050)	162·2 (138·9, 190·7)	7464 (6313, 8753)	142·8 (122·4, 164·8)	-12 (-30·3, 9·7)

Morocco	18470 (16733, 20518)	119·1 (108·1, 132·3)	26741 (22268, 31594)	82·1 (68·7, 97)	-31·1 (-44, -15·8)
Palestine	2259 (1876, 2692)	223·2 (185·4, 265·5)	3421 (3137, 3732)	121·4 (111·4, 132·1)	-45·6 (-56·1, -33·4)
Oman	2600 (2125, 3180)	314·9 (257·8, 382·1)	3280 (2695, 3948)	140·4 (116·5, 165·9)	-55·4 (-65·2, -42·8)
Qatar	307 (261, 357)	213·2 (183·6, 246·1)	1060 (874, 1287)	95·7 (79·2, 114·7)	-55·1 (-64·3, -43·5)
Saudi Arabia	10301 (8499, 12767)	150·5 (123·7, 186·7)	17023 (14712, 20004)	88·7 (78·4, 100·5)	-41·1 (-54·2, -25·3)
Sudan	45259 (34336, 56240)	427·6 (326·2, 528·2)	64471 (49586, 80541)	322·2 (247·2, 404·9)	-24·7 (-41·2, -2·2)
Syria	8248 (7256, 9235)	138·8 (122·8, 154·8)	12009 (10097, 14149)	87·9 (74·6, 103)	-36·7 (-48·9, -22·2)
Tunisia	7469 (6735, 8385)	140·1 (126·9, 156·8)	11987 (9727, 14584)	97·1 (78·9, 118)	-30·7 (-45·1, -12·5)
Turkey	211654 (190584, 232893)	525·6 (473·8, 578·1)	192018 (171959, 211043)	216·1 (193·9, 237·3)	-58·9 (-64·2, -52·8)
United Arab Emirates	1060 (852, 1291)	201·6 (162·6, 247·6)	7580 (5881, 9484)	174·5 (138·8, 215·2)	-13·4 (-36·2, 18·7)
Yemen	31582 (19796, 43312)	531·3 (352, 718·7)	63757 (47491, 82395)	436·9 (328·3, 555·2)	-17·8 (-40·5, 27·4)
South Asia	1868954 (1743482, 2009485)	266 (247·9, 285·5)	2626634 (2487690, 2747242)	178·2 (168·5, 186·2)	-33 (-39·4, -27·3)
Bangladesh	171018 (147701, 207324)	313·8 (269·9, 376·7)	195045 (165574, 230287)	149·4 (126·7, 176·1)	-52·4 (-64, -40·8)
Bhutan	760 (627, 933)	254 (209·5, 311·8)	898 (714, 1100)	133·1 (106·2, 162·9)	-47·6 (-60·4, -33·2)
India	1579511 (1462880, 1698510)	276·1 (254·6, 296·5)	2230917 (2107856, 2343723)	187·5 (177·1, 196·9)	-32·1 (-38·4, -25·7)
Nepal	32575 (26421, 39913)	289·7 (239·6, 350·9)	42130 (34853, 49964)	183·4 (152·5, 217·4)	-36·7 (-49·8, -20·9)
Pakistan	85089 (76169, 95104)	135·7 (122, 151·6)	157644 (130016, 188465)	123·3 (102·2, 146·8)	-9·2 (-26·2, 10·7)
Southern sub-Saharan Africa	56013 (52743, 59733)	177·8 (167·2, 189·8)	73206 (69472, 77098)	123·3 (117·3, 129·6)	-30·7 (-35·8, -25·5)
Botswana	1147 (955, 1375)	180·5 (152·3, 213·5)	1377 (1206, 1591)	95·8 (84·4, 110·3)	-46·9 (-56·4, -34·9)
Lesotho	2662 (2289, 3044)	251·8 (217·5, 287·7)	3043 (2503, 3601)	235·2 (194·3, 276·7)	-6·6 (-24·8, 15·2)
Namibia	984 (874, 1106)	127·9 (113·9, 142·5)	973 (832, 1154)	66·7 (57·3, 78·3)	-47·8 (-56·6, -37·4)
South Africa	39152 (36536, 41753)	161·6 (150·2, 172·6)	46903 (44914, 49174)	100·9 (96·7, 105·6)	-37·6 (-41·5, -33·1)
Swaziland	776 (663, 911)	233·1 (199·5, 270·2)	1127 (928, 1362)	178·6 (147·9, 214·5)	-23·4 (-39·5, -4·5)
Zimbabwe	11292 (9856, 12708)	244·7 (213·9, 274·9)	19783 (16912, 22913)	255·5 (220, 293·2)	4·4 (-14·7, 26·6)
Western sub-Saharan Africa	212419 (192151, 234225)	220·3 (198·9, 242·8)	323108 (293081, 359119)	167·9 (152·9, 185·7)	-23·8 (-30·9, -14·8)
Benin	7076 (6218, 8008)	327·4 (287·8, 370·1)	12327 (10149, 14682)	249·6 (207, 295·7)	-23·8 (-37·6, -7·3)
Burkina Faso	16785 (13636, 19590)	355·1 (289·3, 412)	26537 (22690, 31058)	281·5 (240·6, 326·9)	-20·7 (-34·8, 1·6)
Cameroon	16405 (14222, 18372)	335·3 (289·4, 376)	30990 (24983, 37301)	254·2 (206·4, 305·8)	-24·2 (-39·1, -8)
Cape Verde	1251 (1141, 1363)	556·2 (506·4, 605·7)	1478 (1329, 1632)	333·1 (299·7, 368·7)	-40·1 (-47·7, -31·4)
Chad	9013 (7776, 10410)	298 (257·1, 343·6)	16967 (14049, 20031)	296 (245·7, 350·1)	-0·7 (-17·7, 21·6)
Côte d'Ivoire	7056 (6078, 8072)	150·4 (131·2, 170·7)	13425 (11336, 15978)	119·4 (101·7, 140·4)	-20·6 (-35·1, -2·7)

The Gambia	613 (504, 733)	159·8 (132·7, 189·5)	1167 (991, 1354)	121 (103·7, 139·4)	-24·3 (-38·5, -6·3)
Ghana	17130 (14462, 19799)	244·8 (207·7, 281·8)	26790 (23076, 30791)	164 (142, 187·7)	-33 (-45, -18·7)
Guinea	12510 (11124, 14076)	344·5 (306·2, 387·4)	20490 (17259, 23925)	348·5 (295·1, 405·8)	1·2 (-17·3, 22·3)
Guinea-Bissau	2318 (1920, 2775)	513·5 (427·1, 611·5)	2680 (2236, 3182)	345·9 (292·6, 404·4)	-32·6 (-44·8, -16·9)
Liberia	3452 (2977, 4023)	288 (249, 333·6)	4823 (4051, 5688)	232·1 (196·2, 273·6)	-19·4 (-33·8, -1·6)
Mali	26671 (23734, 29917)	575·5 (512·6, 644·5)	32380 (26974, 38458)	350·3 (292·5, 412·9)	-39·1 (-49·2, -26·5)
Mauritania	3657 (3191, 4164)	336·4 (294·2, 382·7)	4092 (3378, 4900)	200·8 (165·2, 239·4)	-40·3 (-51, -27·4)
Niger	10889 (8605, 12980)	338 (269·7, 404·4)	20319 (16246, 24454)	260·6 (211·4, 311·7)	-22·9 (-37·3, -3·9)
Nigeria	55095 (41113, 72474)	117·7 (88·3, 152·9)	69661 (49961, 98969)	81·2 (59·4, 112·9)	-31 (-51·1, -2)
São Tomé and Príncipe	218 (195, 246)	317 (283·7, 357·1)	350 (288, 421)	332·2 (272·9, 398·7)	4·8 (-16·9, 29·4)
Senegal	11475 (10072, 13048)	327·6 (287, 373·6)	19388 (16493, 22555)	259·4 (220·9, 301·6)	-20·8 (-34, -6·1)
Sierra Leone	6440 (5028, 7744)	309 (242·2, 370·7)	9802 (8230, 11546)	268 (226·5, 313·5)	-13·3 (-30·4, 15·3)
Togo	4359 (3796, 4946)	308·1 (269, 348·6)	9439 (7716, 11380)	251·6 (207·5, 298·7)	-18·3 (-33·1, 0·2)
Eastern sub-Saharan Africa	237973 (207534, 270136)	268·3 (235·8, 300·2)	280901 (261364, 301544)	155·8 (145, 167·4)	-41·9 (-48·7, -33·7)
Burundi	8732 (7101, 10880)	338·4 (279·7, 418·2)	8886 (7130, 10897)	182·8 (148·9, 221·9)	-46 (-56·2, -34·6)
Comoros	633 (531, 758)	270·4 (226·7, 322·3)	745 (617, 898)	151 (125·6, 181·1)	-44·1 (-55·3, -31)
Djibouti	440 (321, 606)	228·9 (171·5, 311)	978 (684, 1349)	147·3 (105·3, 197)	-35·6 (-54·2, -9·3)
Eritrea	5176 (3805, 6430)	428·7 (336·6, 517·1)	6858 (5591, 8354)	238·7 (197, 284·1)	-44·3 (-55·4, -27·1)
Ethiopia	90612 (71088, 114148)	370·2 (295·7, 463)	61993 (54517, 72873)	133·8 (117·7, 157·8)	-63·9 (-71·5, -54·7)
Kenya	22750 (19607, 26174)	240·5 (207·4, 275·7)	52970 (47853, 59533)	219·7 (198·9, 247·1)	-8·7 (-17·4, -0·4)
Madagascar	14486 (12772, 16407)	239·1 (211·1, 271·3)	21404 (17475, 25694)	168·9 (137·5, 201·4)	-29·4 (-42·9, -13·6)
Malawi	5019 (2987, 6268)	113·9 (73·3, 138·9)	5766 (4929, 6661)	72·6 (62·6, 83·4)	-36·2 (-49·9, 1·9)
Mozambique	12580 (10754, 14614)	188·9 (162·7, 217·5)	18746 (15655, 21813)	156·9 (132·1, 181·9)	-17 (-32·6, 4·1)
Rwanda	11063 (9346, 12834)	327·3 (273·5, 378·7)	8469 (6895, 10084)	131·9 (108·8, 156)	-59·7 (-68·3, -50·3)
Somalia	9351 (5284, 13587)	296·2 (188·4, 410·9)	16392 (12355, 21548)	219·2 (166·7, 284)	-26 (-48·1, 18·4)
South Sudan	7081 (4437, 10275)	260·8 (174·1, 365·9)	8755 (6467, 11555)	197·8 (148·2, 258·4)	-24·1 (-47·5, 18·1)
Tanzania	26083 (19171, 31560)	210·2 (159·1, 252)	36838 (31292, 42834)	138·1 (117·3, 160·9)	-34·3 (-47·3, -12·4)
Uganda	13673 (11591, 16075)	183·8 (156·9, 214·9)	19268 (16374, 22331)	124·4 (106·6, 143·1)	-32·3 (-45·7, -15·8)
Zambia	10175 (7959, 12303)	298·6 (246·5, 362·9)	12655 (10560, 15097)	168·4 (141·5, 201·7)	-43·6 (-53·7, -30·4)
Central sub-Saharan Africa	69972 (59629, 80501)	265·6 (228·1, 305)	100529 (87599, 113903)	173 (151·3, 195)	-34·9 (-44·5, -24)
Angola	15836 (12048, 19294)	334·3 (263·2, 401·7)	20157 (16694, 23607)	162·7 (135·2, 190·9)	-51·3 (-61·3, -36·9)

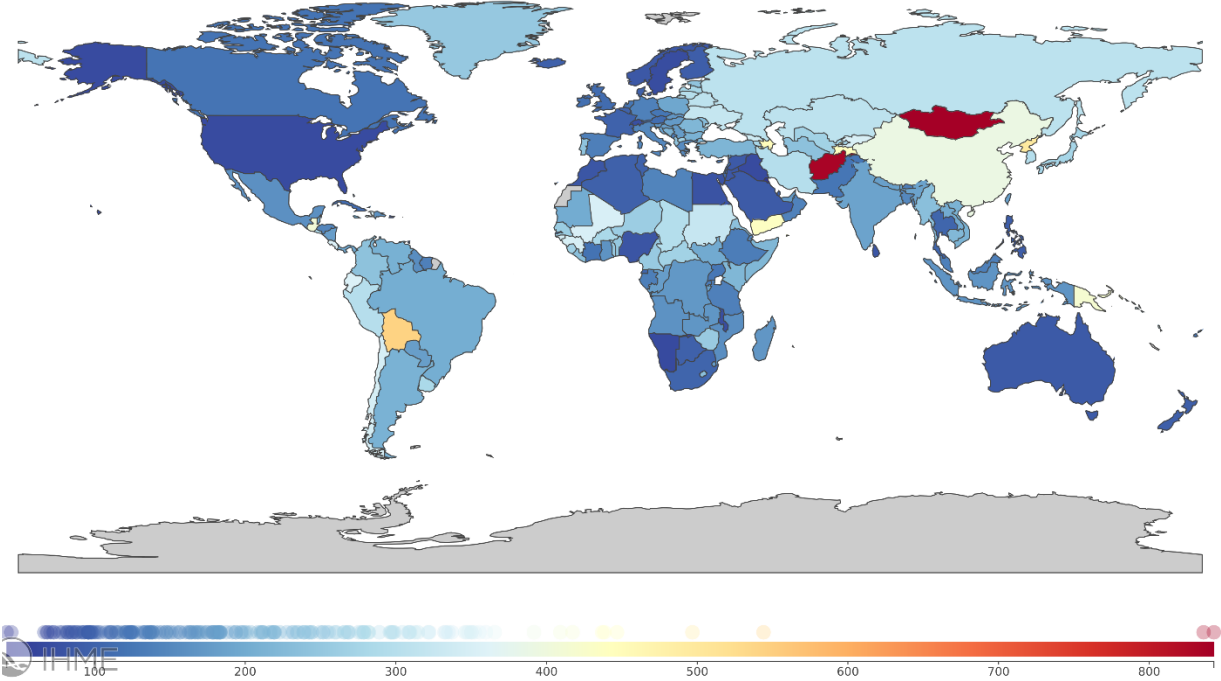
Central African Republic	5208 (4047, 6251)	379.9 (304.5, 450.6)	6838 (5267, 8418)	269.1 (211.7, 323.4)	-29.2 (-42.6, -13)
Congo	4105 (3541, 4732)	331.7 (289.1, 379.4)	5173 (4224, 6222)	179 (148.6, 210.9)	-46 (-57.2, -32.6)
DR Congo	42562 (34753, 50833)	235.4 (194.3, 280)	66282 (54421, 78404)	171.8 (142.5, 201.5)	-27 (-41.5, -9.2)
Equatorial Guinea	841 (651, 1065)	375.8 (295.8, 471.1)	544 (368, 784)	103.7 (72.8, 146.1)	-72.4 (-81.3, -60)
Gabon	1420 (1152, 1683)	234.2 (190.6, 276.6)	1536 (1283, 1801)	135.9 (115.2, 157.9)	-42 (-52.9, -28.4)

Appendix Figure 1. Age-standardised mortality rates of stomach cancer per 100 000 population in 2017, by country and territory

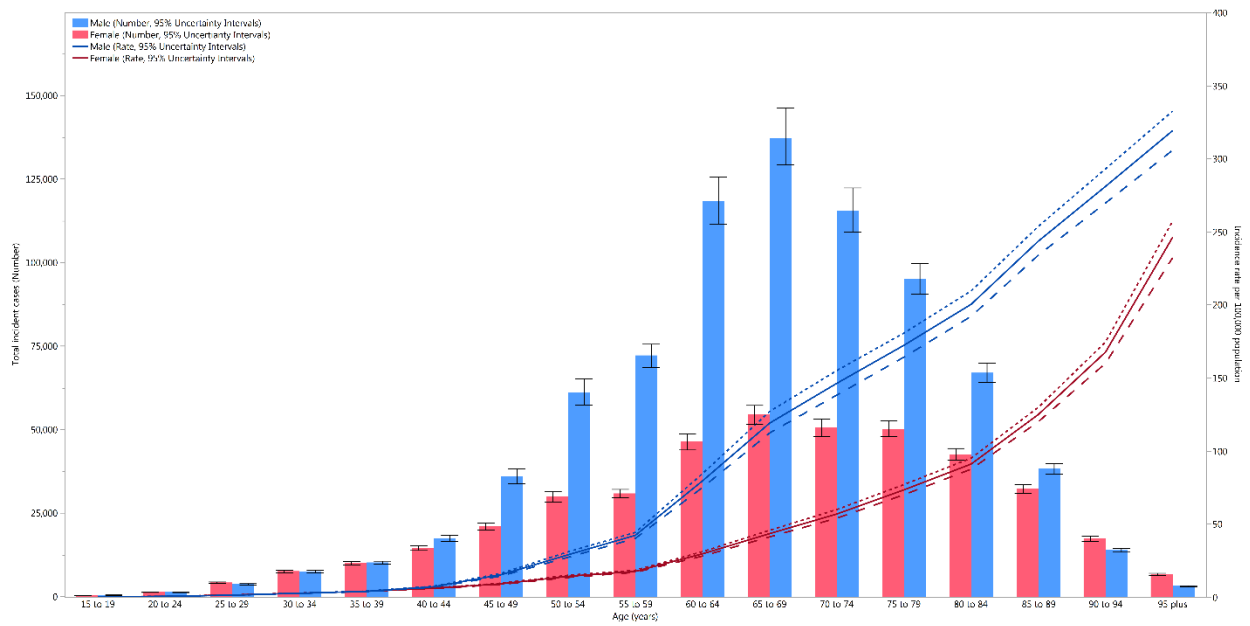


ATG=Antigua and Barbuda, VCT=Saint Vincent and the Grenadines, BRB=Barbados, COM=Comoros, DMA=Dominica, GRD=Grenada, MDV=Maldives, MUS=Mauritius, LCA=Saint Lucia, TTO=Trinidad and Tobago, TLS=Timor-Leste, SYC=Seychelles, MLT=Malta, SGP=Singapore, MHL=Marshall Islands, KIR=Kiribati, SLB=Solomon Islands, FSM=Federated States of Micronesia, VUT=Vanuatu, WSM=Samoa, FJI=Fiji, TON=Tonga.

Appendix Figure 2. Age-standardised DALY rates of stomach cancer per 100 000 population in 2017, by country and territory

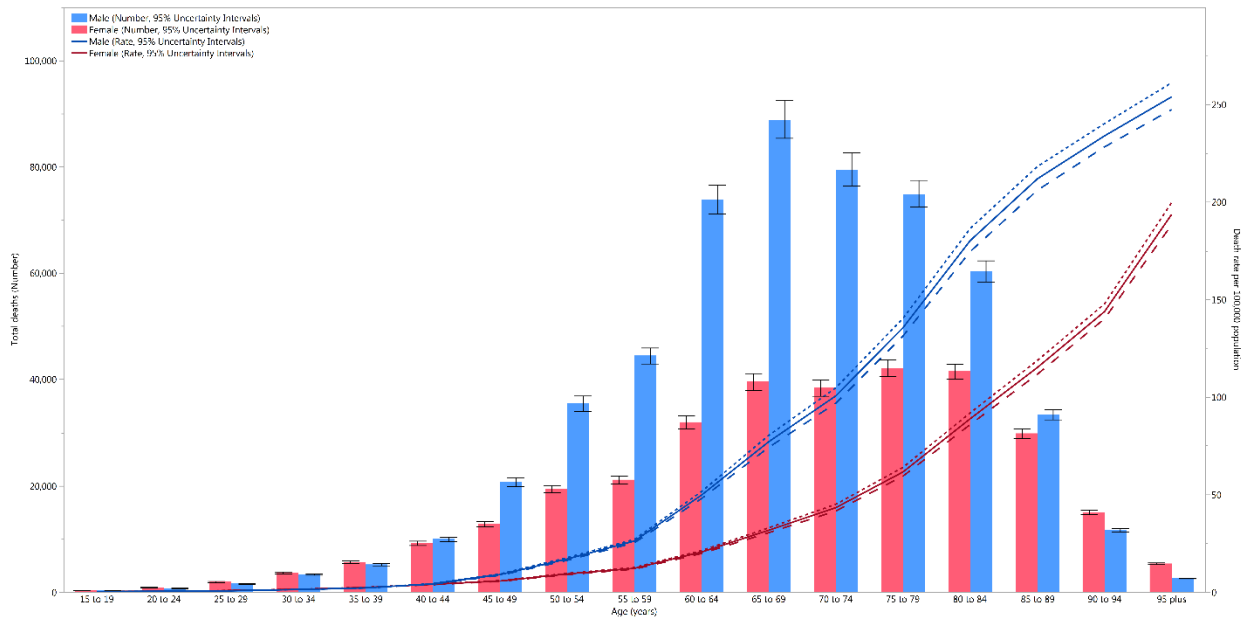


Appendix Figure 3. Global number of incident cases and incidence rates of stomach cancer per 100 000 population by age and sex, 2017



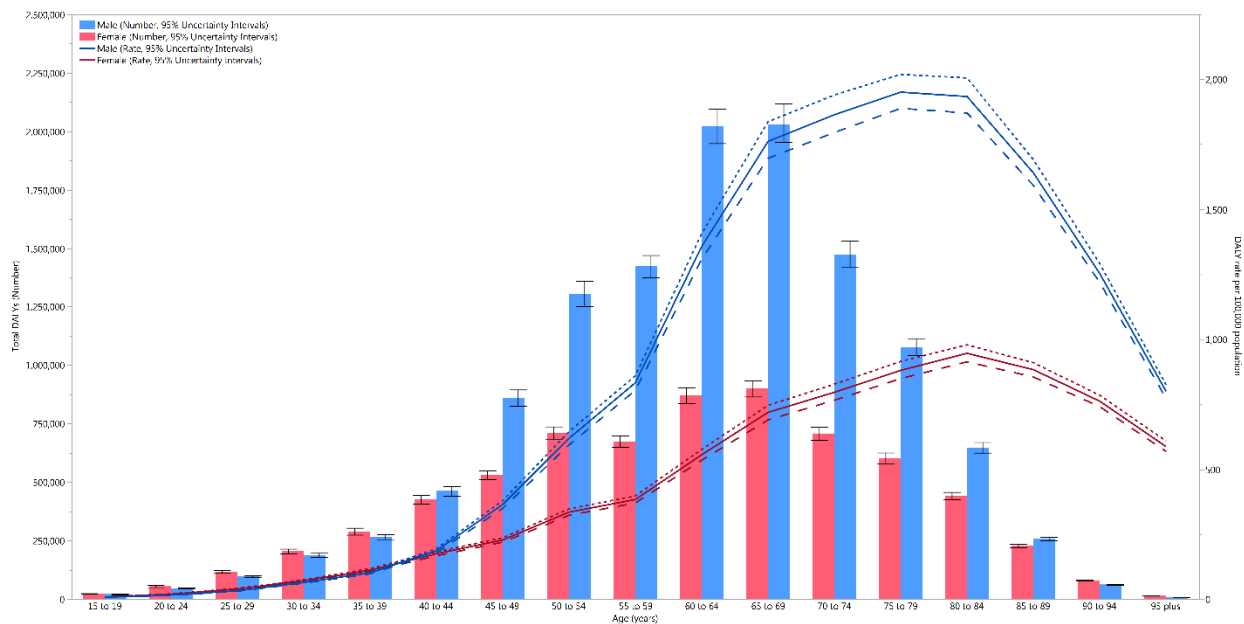
Dotted and dashed lines indicate 95% upper and lower uncertainty intervals, respectively.

Appendix Figure 4. Global number of deaths and death rates of stomach cancer per 100 000 population by age and sex, 2017



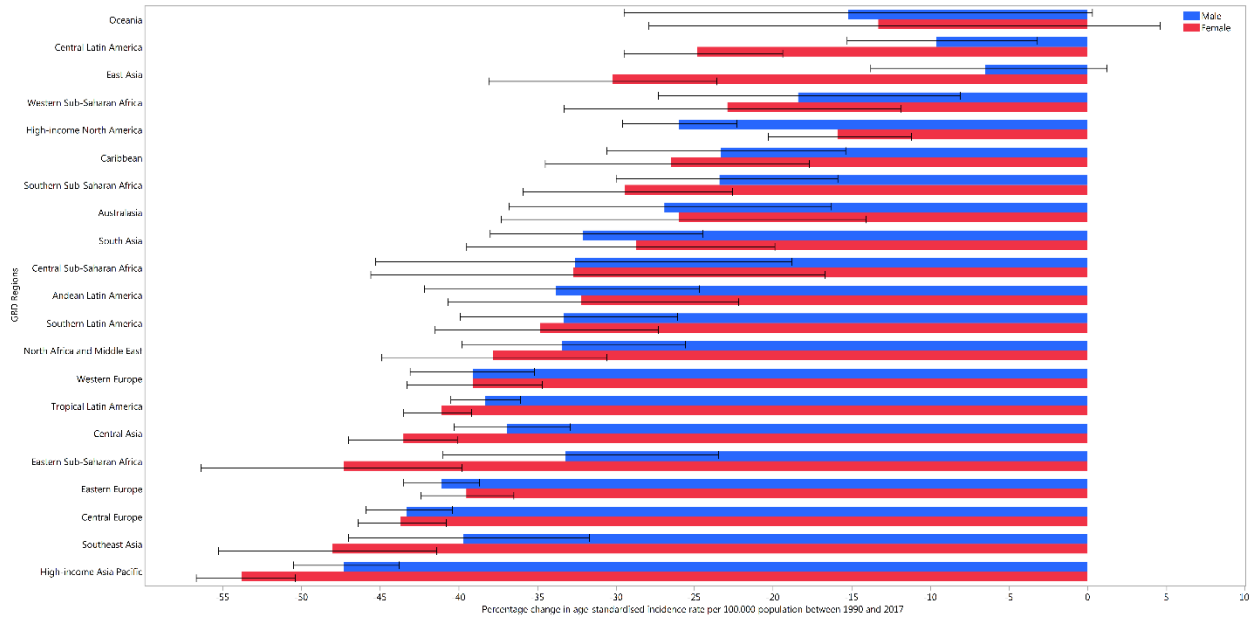
Dotted and dashed lines indicate 95% upper and lower uncertainty intervals, respectively.

Appendix Figure 5. Global number of DALYs and DALY rates of stomach cancer per 100,000 population by age and sex, 2017

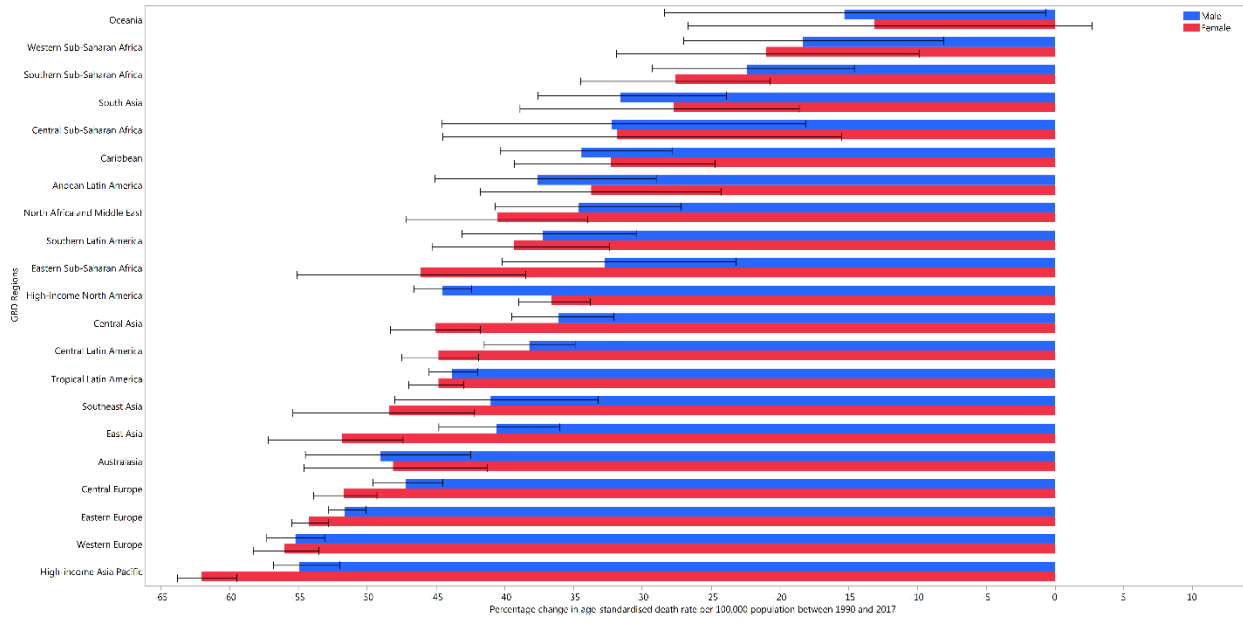


Dotted and dashed lines indicate 95% upper and lower uncertainty intervals, respectively.

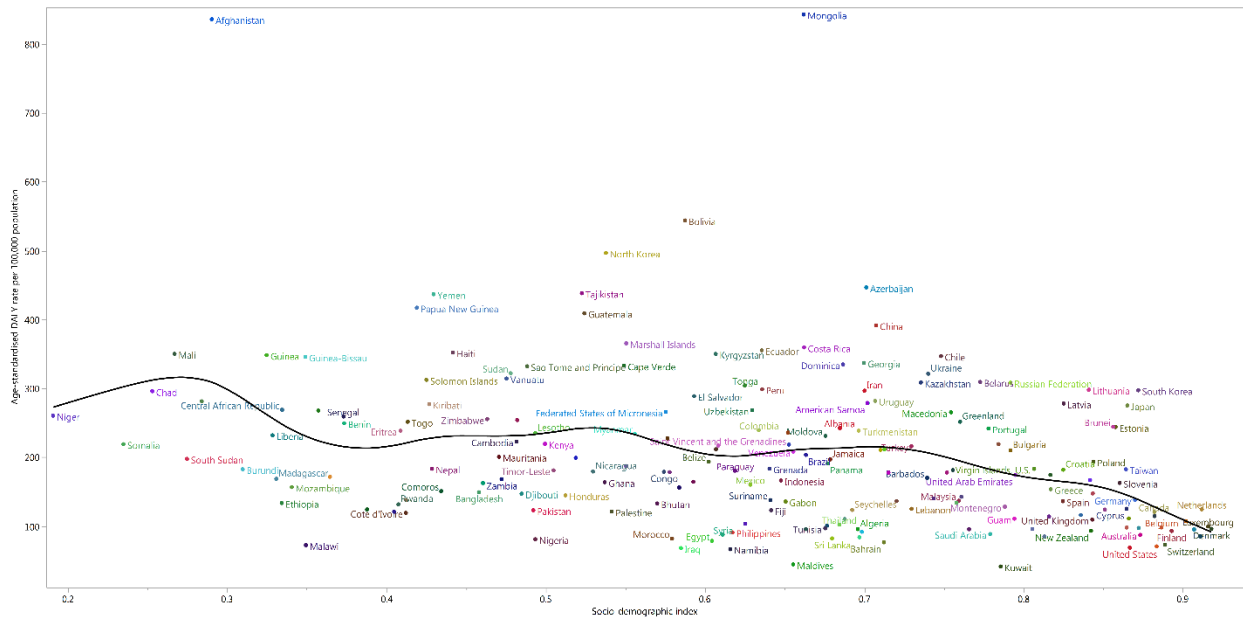
Appendix Figure 6. The percentage change in age-standardised incidence rates of stomach cancer from 1990 to 2017 for 21 Global Burden of Disease regions by sex



Appendix Figure 7. The percentage change in age-standardised mortality rates of stomach cancer from 1990 to 2017 for 21 Global Burden of Disease regions by sex



Appendix Figure 8. Age-standardised DALY rates for stomach cancer versus SDI by country and territory, 2017



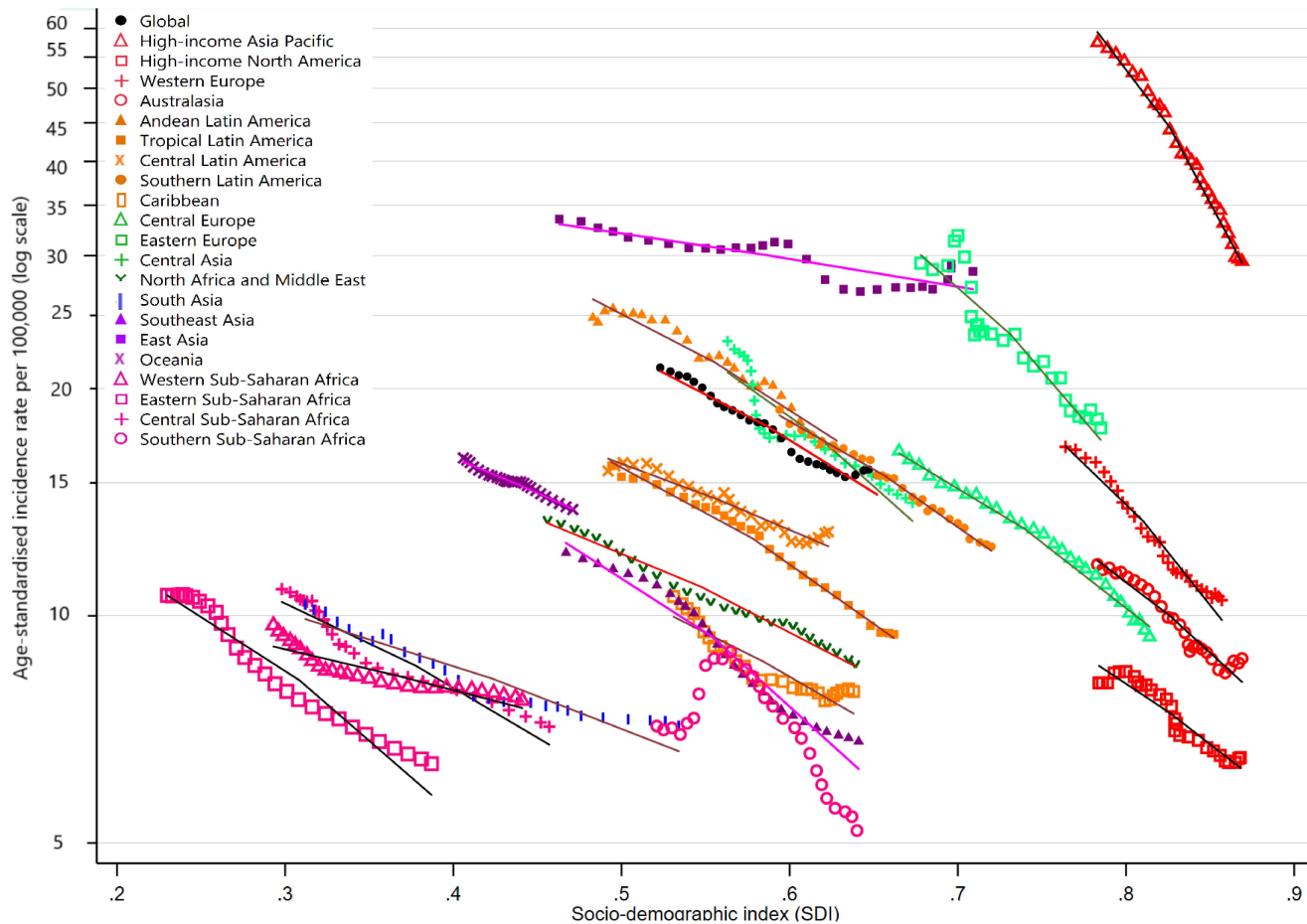
Black line represents the expected age-standardised DALY rate of stomach cancer based solely on SDI. SDI=Socio-demographic Index.

Appendix Figure 9. Percentage of stomach cancer DALYs attributable to high-sodium diet and smoking in 2017, by sex and age



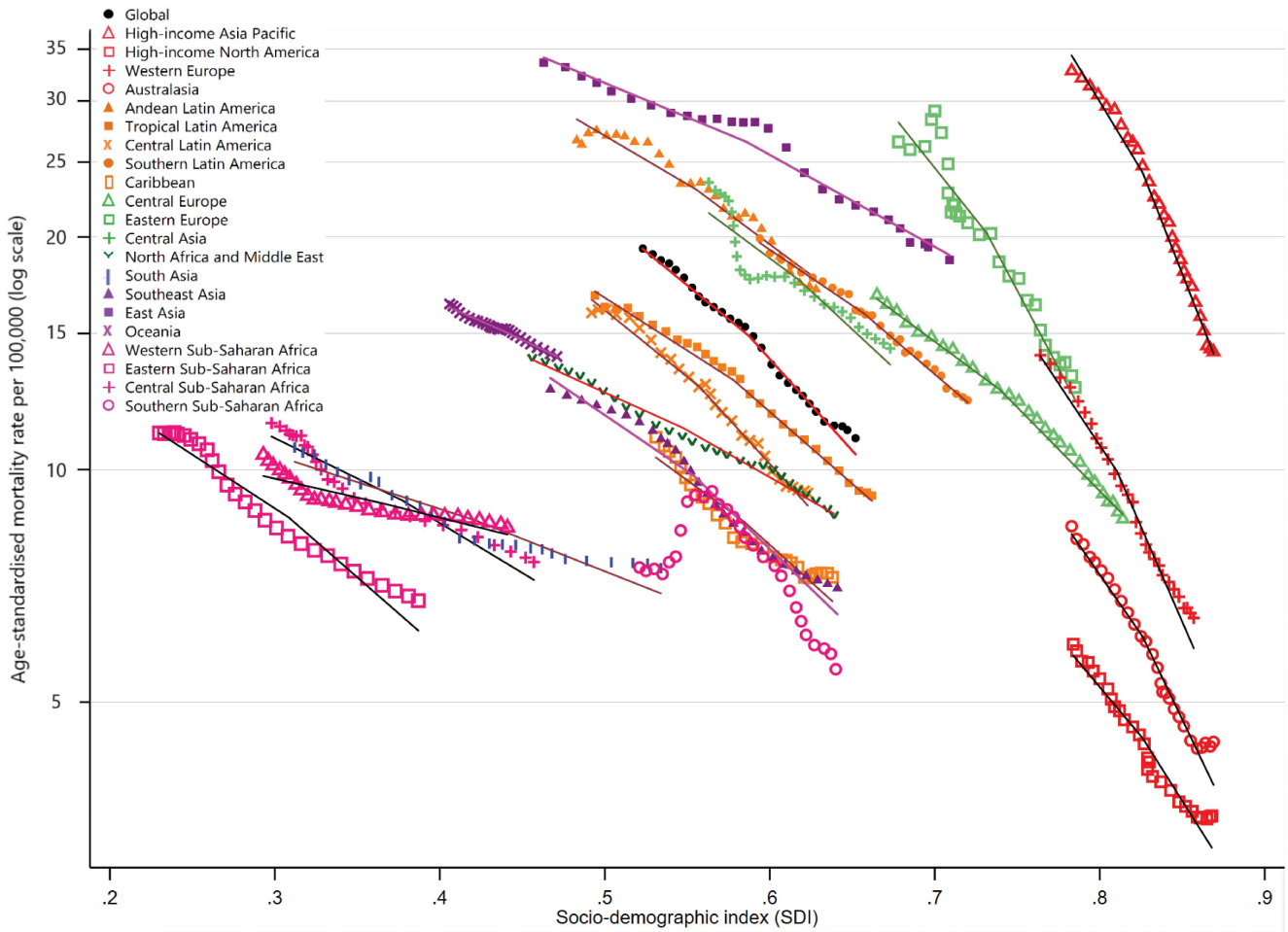
Appendix Figure 10. Age-standardised (a) incidence, (b) death, and (c) DALY rates of stomach cancer globally and for 21 GBD regions by SDI, 1990-2017.

Figure 10a



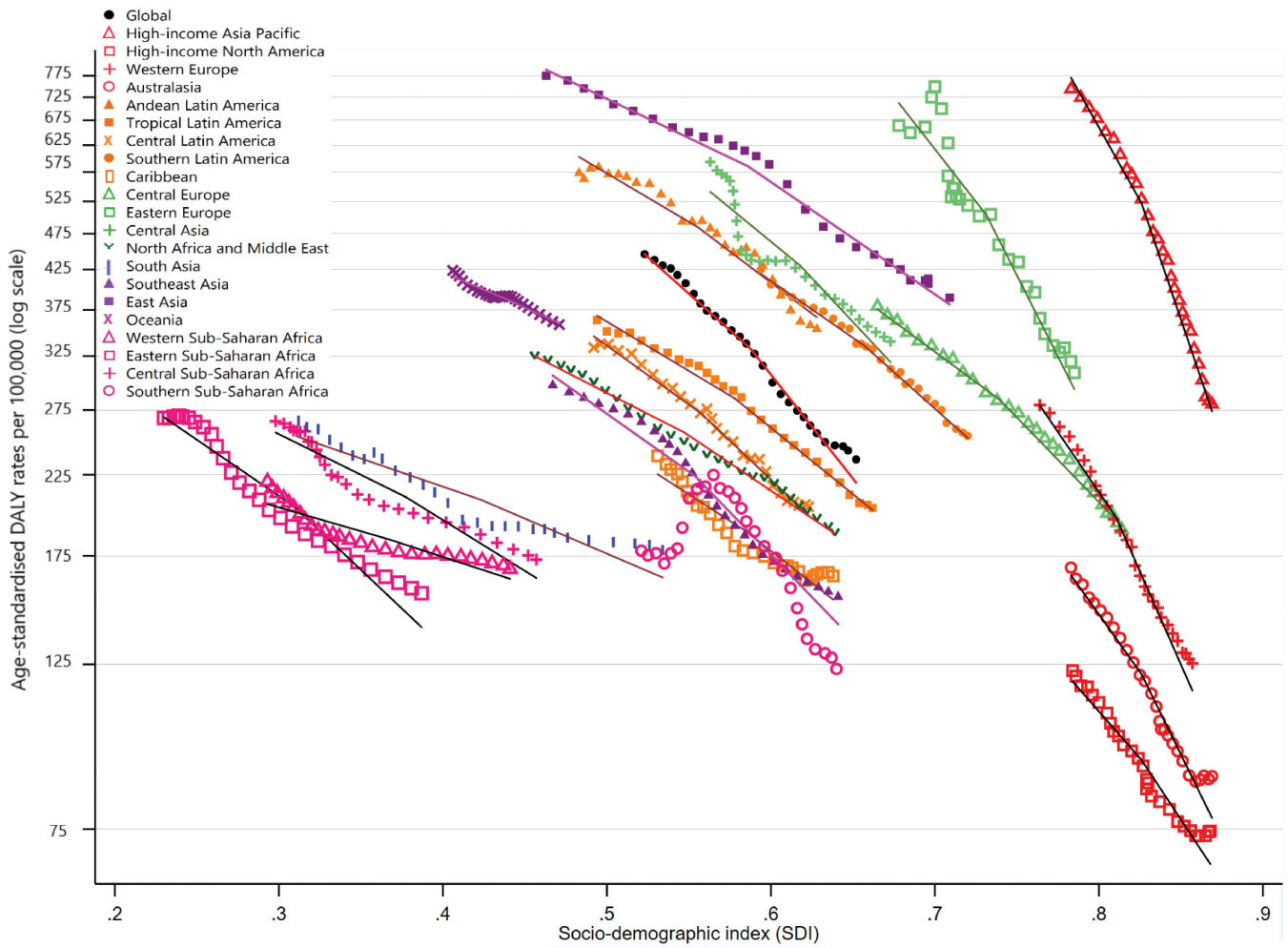
For each region, points from left to right depict estimates from each year from 1990 to 2017. Lines are based on fitted regression models. SDI=Socio-demographic Index. GBD=Global Burden of Diseases, Injuries, and Risk Factors Study.

Figure 10b



For each region, points from left to right depict estimates from each year from 1990 to 2017. Lines are based on fitted regression models. SDI=Socio-demographic Index. GBD=Global Burden of Diseases, Injuries, and Risk Factors Study.

Figure 10c



For each region, points from left to right depict estimates from each year from 1990 to 2017. Lines are based on fitted regression models. DALY=disability-adjusted life-year. SDI=Socio-demographic Index. GBD=Global Burden of Diseases, Injuries, and Risk Factors Study.