

SUPPLEMENTARY DATA

**Supplementary Table 1.** Characteristics of the TEDDY study population (N=7522)

Characteristic		IA negative	Any IA	IAA-first IA	GADA-first IA	T1D
	N (%)	6761 (89.9)	761(10.1)	287 (3.8)	329 (4.4)	290 (3.9)
Country	US	2782 (41.1)	254 (33.4)	85 (29.6)	127 (38.6)	91 (31.4)
	Finland	1493 (22.1)	192 (25.2)	94 (32.8)	63 (19.1)	88 (30.3)
	Germany	457 (6.8)	56 (7.4)	20 (7.0)	17 (5.2)	28 (9.7)
	Sweden	2029 (30.0)	259 (34.0)	88 (30.7)	122 (37.1)	83 (28.6)
Family history of T1D	FDR: Mother	275 (4.1)	35 (4.6)	11 (3.8)	14 (4.3)	22 (7.6)
	FDR: Father	339 (5.0)	76 (10.0)	29 (10.1)	34 (10.3)	37 (12.8)
	FDR: Sibling	90 (1.3)	37 (4.9)	21 (7.3)	9 (2.7)	20 (6.9)
	No	6057 (89.6)	613 (80.6)	226 (78.7)	272 (82.7)	211 (72.8)
Sex	Male	3422 (50.6)	422 (55.5)	165 (57.5)	176 (53.5)	151 (52.1)
	Female	3339 (49.4)	339 (44.5)	122 (42.5)	153 (46.5)	139 (47.9)
HLA DR-DQ genotype	DR3/4	2570 (38.0)	371 (48.8)	137 (47.7)	162 (49.2)	156 (53.8)
	DR4/4	1342 (19.8)	141 (18.5)	53 (18.5)	51 (15.5)	54 (18.6)
	DR4/8	1174 (17.4)	120 (15.8)	61 (21.3)	40 (12.2)	41 (14.1)
	FDR specific*	216 (3.2)	27 (3.5)	13 (4.5)	4 (1.2)	14 (4.8)
	DR3/3	1459 (21.6)	102 (13.4)	23 (8.0)	72 (21.9)	25 (8.6)
Duration of exclusive breastfeeding	< 3 months	5103 ( 75.5)	560 ( 73.6)	206 ( 71.8)	244 ( 74.2)	212 ( 73.1)

SUPPLEMENTARY DATA

	≥ 3 months	1658 ( 24.5)	201 ( 26.4)	81 ( 28.2)	85 ( 25.8)	78 ( 26.9)
Autoantibody at seroconversion (first appearing autoantibody)	None	6761 (100)	0 (0)	0 (0)	0 (0)	18 (6.2)
	GADA only	0 (0)	329 (43.2)	0 (0)	329 (100)	66 (22.8)
	IAA only	0 (0)	287 (37.7)	287 (100)	0 (0)	112 (38.6)
	IA2A only	0 (0)	20 (2.6)	0 (0)	0 (0)	9 (3.1)
	Multiple	0 (0)	125 (16.4)	0 (0)	0 (0)	85 (29.3)
Birth weight (kg)	Mean (SD)	3.49 (0.55)	3.56 (0.51)	3.56 (0.56)	3.58 (0.48)	3.56 (0.50)
Birth length (cm)	Mean (SD)	50.75 (2.74)	50.93 (2.45)	50.91 (2.60)	51.08 (2.34)	50.82 (2.58)
Gestational age adjusted birth weight (kg)	Mean (SD)	-0.0 (0.5)	0.0 (0.4)	0.0 (0.5)	0.1 (0.4)	0.1 (0.4)
Gestational age adjusted birth height (kg)	Mean (SD)	-0.01 (2.39)	0.10 (2.21)	-0.03 (2.35)	0.26 (2.07)	0.16 (2.35)
Weight growth rate in infancy (kg/year)	Mean (SD)	8.78 (1.37)	8.95 (1.39)	8.99 (1.41)	8.95 (1.42)	8.99 (1.39)
Weight growth rate in early childhood (kg/year)	Mean (SD)	2.49 (0.46)	2.49 (0.46)	2.51 (0.45)	2.47 (0.46)	2.53 (0.43)
Age at weight growth phase transition (mo)	Mean (SD)	7.74 (1.78)	7.73 (1.76)	7.61 (1.68)	7.83 (1.88)	7.69 (1.90)
Height growth rate in infancy (cm/year)	Mean (SD)	30.29 (2.78)	30.67 (2.64)	30.81 (2.53)	30.55 (2.69)	30.46 (2.66)
Height growth rate in early childhood (cm/year)	Mean (SD)	9.41 (0.73)	9.45 (0.73)	9.44 (0.69)	9.43 (0.76)	9.55 (0.68)
Age at height growth phase transition (mo)	Mean (SD)	9.07 (1.09)	8.95 (1.05)	8.90 (1.07)	8.98 (1.03)	9.00 (1.07)

\*FDR-specific HLA-DR-DQ genotypes are DR4/4b, DR4/1, DR4/13, DR4/9, and DR3/9.  
Data are presented as number (percentage) unless otherwise indicated.

SUPPLEMENTARY DATA

**Supplementary Table 2.** Hazard ratio (95% CI) and associated p-value of the factors' effects from multiple Cox PH regression analysis of weight and height on the risk of IA, IAA-first IA and GADA-first IA, adjusting for gestational age-adjusted birth measurement (i.e., birth weight in the weight model; birth length in the height model), duration of exclusive breastfeeding, HLA-DR-DQ genotype, family history of type 1 diabetes, sex and country of residence.

Factor		Any IA HR (95% CI), p	IAA-first IA HR (95% CI), p	GADA-first IA HR (95% CI), p
<b>Weight</b>				
Rate in infancy (/kg/year)		<b>1.09 (1.02,1.17), 0.015</b>	1.06 (0.94,1.19), 0.352	<b>1.15 (1.04,1.28), 0.009</b>
Rate in early childhood (/kg/year)		0.97 (0.82,1.15), 0.741	1.08 (0.83,1.41), 0.569	0.80 (0.62,1.03), 0.087
Age at phase transition (/mo)		1.01 (0.96,1.06), 0.633	0.99 (0.92,1.07), 0.810	1.04 (0.96,1.11), 0.335
Gestational age-adjusted birth weight (/kg)		<b>1.19 (1.02,1.41), 0.031</b>	1.06 (0.81,1.39), 0.664	<b>1.39 (1.09,1.78), 0.008</b>
Duration of exclusive breastfeeding	≥ 3 months vs. < 3 months	0.98 (0.83,1.16), 0.831	1.08 (0.83,1.40), 0.572	0.96 (0.75,1.24), 0.749
Sex	Female vs. Male	0.91 (0.77,1.07), 0.247	0.80 (0.61,1.05), 0.114	1.06 (0.82,1.36), 0.675
Country	Finland vs. US	<b>1.29 (1.06,1.57), 0.010</b>	<b>1.85 (1.36,2.51), &lt; 0.001</b>	0.87 (0.64,1.19), 0.391
	Germany vs. US	1.28 (0.95,1.73), 0.107	1.23 (0.74,2.03), 0.419	0.86 (0.51,1.45), 0.576
	Sweden vs. US	<b>1.22 (1.02,1.46), 0.028</b>	1.29 (0.95,1.74), 0.106	1.12 (0.87,1.45), 0.373
Family history of T1D	FDR: Mother vs No	1.27 (0.88,1.83), 0.204	1.14 (0.60,2.18), 0.694	1.34 (0.76,2.36), 0.313
	FDR: Father vs. No	<b>2.53 (1.95,3.28), &lt; 0.001</b>	<b>2.57 (1.68,3.93), &lt; 0.001</b>	<b>3.02 (2.08,4.39), &lt; 0.001</b>
	FDR: Sibling vs. No	<b>3.64 (2.59,5.11), &lt; 0.001</b>	<b>5.80 (3.65,9.21), &lt; 0.001</b>	<b>2.14 (1.10,4.18), 0.026</b>
HLA DR-DQ genotype	DR3/4 vs. DR 4/4	<b>1.35 (1.12,1.64), 0.002</b>	1.31 (0.95,1.80), 0.095	<b>1.66 (1.21,2.27), 0.002</b>

SUPPLEMENTARY DATA

	DR4/8 vs. DR 4/4	0.99 (0.77,1.27), 0.930	1.23 (0.85,1.80), 0.272	0.98 (0.65,1.49), 0.930
	FDR specific* vs. DR 4/4	<b>0.55 (0.35,0.85), 0.008</b>	0.67 (0.35,1.31), 0.243	<b>0.22 (0.08,0.63), 0.005</b>
	DR3/3 vs. DR 4/4	<b>0.67 (0.52,0.86), 0.002</b>	<b>0.41 (0.25,0.66), &lt; 0.001</b>	1.29 (0.90,1.84), 0.170
<b>Height</b>				
Rate in infancy (/cm/year)		1.05 (0.97,1.14), 0.214	1.08 (0.95,1.23), 0.240	1.06 (0.94,1.19), 0.361
Rate in early childhood (/cm/year)		1.06 (0.94,1.20), 0.356	1.06 (0.86,1.29), 0.599	0.98 (0.82,1.18), 0.871
Age at phase transition (/mo)		<b>0.86 (0.74,0.99), 0.034</b>	<b>0.78 (0.61,0.99), 0.040</b>	0.89 (0.72,1.11), 0.312
Gestational age-adjusted birth length (/cm)		1.00 (0.97,1.04), 0.977	0.97 (0.92,1.03), 0.381	1.04 (0.98,1.09), 0.199
Duration of exclusive breastfeeding	≥ 3 months vs. < 3 months	0.97 (0.82,1.14), 0.708	1.06 (0.82,1.38), 0.656	0.95 (0.74,1.22), 0.683
Sex	Female vs. Male	1.38 (0.85,2.24), 0.188	1.72 (0.77,3.81), 0.185	1.43 (0.69,2.96), 0.334
Country	Finland vs. US	<b>1.33 (1.09,1.63), 0.006</b>	<b>1.83 (1.33,2.52), &lt; 0.001</b>	0.93 (0.67,1.29), 0.678
	Germany vs. US	1.19 (0.88,1.61), 0.256	1.15 (0.70,1.91), 0.583	0.78 (0.47,1.32), 0.360
	Sweden vs. US	<b>1.22 (1.02,1.47), 0.034</b>	1.23 (0.90,1.68), 0.203	1.16 (0.89,1.51), 0.275
Family history of T1D	FDR: Mother vs. No	1.35 (0.94,1.94), 0.104	1.21 (0.64,2.30), 0.558	1.44 (0.82,2.52), 0.204
	FDR: Father vs. No	<b>2.50 (1.93,3.23), &lt; 0.001</b>	<b>2.57 (1.68,3.93), &lt; 0.001</b>	<b>2.92 (2.01,4.24), &lt; 0.001</b>
	FDR: Sibling vs. No	<b>3.67 (2.62,5.16), &lt; 0.001</b>	<b>5.88 (3.70,9.35), &lt; 0.001</b>	<b>2.13 (1.09,4.16), 0.027</b>
HLA DR-DQ genotype	DR3/4 vs. DR 4/4	<b>1.36 (1.12,1.65), 0.002</b>	1.32 (0.96,1.81), 0.090	<b>1.66 (1.21,2.28), 0.002</b>
	DR4/8 vs. DR 4/4	0.98 (0.77,1.26), 0.901	1.24 (0.85,1.80), 0.267	0.97 (0.64,1.47), 0.882

SUPPLEMENTARY DATA

	FDR specific* vs. DR 4/4	<b>0.56 (0.36,0.88), 0.011</b>	0.68 (0.35,1.32), 0.258	<b>0.23 (0.08,0.67), 0.007</b>
	DR3/3 vs. DR 4/4	<b>0.68 (0.53,0.88), 0.003</b>	<b>0.41 (0.25,0.67), &lt; 0.001</b>	1.31 (0.91,1.87), 0.143

\*FDR-specific HLA-DR-DQ genotypes are DR4/4b, DR4/1, DR4/13, DR4/9, and DR3/9.

SUPPLEMENTARY DATA

**Supplementary Table 3.** Hazard ratio (95% CI) and associated p-value of the factors' effects from multiple Cox PH regression analysis of weight and height on the risk of progression to T1D from IA, and from subgroup analysis stratified by the type of first appearing autoantibody (IAA only, GADA only or multiple autoantibodies), adjusting for gestational age-adjusted birth measurement (i.e., birth weight in the weight model; birth length in the height model), duration of exclusive breastfeeding, age at the development of IA, type of first appearing autoantibody (if applicable), HLA-DR-DQ genotype, family history of type 1 diabetes, sex and country of residence.

Factor		Overall (n=761) HR (95% CI), p	Subgroup analysis stratified by the first appearing autoantibody		
			IAA only (n=287) HR (95% CI), p	GADA only (n=329) HR (95% CI), p	multiple autoantibodies (n=145) HR (95% CI), p
<b>Weight</b>					
Rate in infancy (/kg/year)		1.01 (0.90,1.13), 0.860	1.08 (0.90,1.28), 0.404	0.87 (0.68,1.10), 0.241	0.93 (0.74,1.16), 0.504
Rate in early childhood (/kg/year)		1.19 (0.92,1.52), 0.183	0.96 (0.60,1.53), 0.861	<b>2.57 (1.34,4.91), 0.004</b>	1.13 (0.73,1.75), 0.580
Age at phase transition (/mo)		0.99 (0.91,1.08), 0.853	0.93 (0.81,1.08), 0.343	<b>1.15 (1.02,1.30), 0.021</b>	<b>0.83 (0.70,0.99), 0.039</b>
Gestational age-adjusted birth weight (/kg)		1.30 (0.98,1.73), 0.064	1.12 (0.73,1.71), 0.604	<b>2.04 (1.03,4.04), 0.040</b>	1.70 (0.98,2.97), 0.059
Duration of exclusive breastfeeding	≥ 3 months vs. < 3 months	1.04 (0.78,1.38), 0.781	0.98 (0.63,1.52), 0.936	1.00 (0.53,1.86), 0.989	1.16 (0.68,1.96), 0.587
Sex	Female vs. Male	1.20 (0.90,1.58), 0.211	1.42 (0.89,2.26), 0.136	1.18 (0.65,2.13), 0.587	1.21 (0.75,1.97), 0.438
Country	Finland vs. US	1.32 (0.95,1.82), 0.095	1.37 (0.82,2.28), 0.225	<b>2.70 (1.48,4.94), 0.001</b>	0.71 (0.38,1.32), 0.279
	Germany vs. US	1.03 (0.64,1.66), 0.887	1.20 (0.55,2.63), 0.650	0.65 (0.15,2.80), 0.566	1.07 (0.50,2.29), 0.861
	Sweden vs. US	0.85 (0.62,1.17), 0.327	0.97 (0.57,1.66), 0.918	<b>0.44 (0.22,0.86), 0.016</b>	1.00 (0.57,1.74), 0.999

SUPPLEMENTARY DATA

Family history of T1D	Yes vs. No	<b>1.49 (1.11,2.00), 0.007</b>	1.53 (0.98,2.38), 0.061	<b>2.42 (1.31,4.48), 0.005</b>	1.16 (0.64,2.09), 0.624
HLA DR-DQ genotype	DR3/4 vs. other	1.23 (0.96,1.57), 0.107	<b>1.77 (1.18,2.63), 0.005</b>	1.07 (0.65,1.79), 0.781	0.67 (0.42,1.06), 0.084
Age at seroconversion (/month)		<b>0.98 (0.98,0.99), &lt; 0.001</b>	<b>0.97 (0.95,0.98), &lt; 0.001</b>	<b>0.98 (0.96,0.99), &lt; 0.001</b>	<b>0.99 (0.98,1.00), 0.013</b>
Type of first appearing autoantibody	Multiple autoantibodies vs. IAA only	<b>3.28 (2.45,4.38), &lt; 0.001</b>			
	GADA only vs. IAA only	0.79 (0.57,1.09), 0.149			
<b>Height</b>					
Rate in infancy (/cm/year)		<b>0.79 (0.70,0.90), &lt; 0.001</b>	0.90 (0.74,1.11), 0.343	<b>0.72 (0.55,0.94), 0.017</b>	<b>0.75 (0.59,0.95), 0.019</b>
Rate in early childhood (/cm/year)		<b>1.48 (1.22,1.79), &lt; 0.001</b>	1.28 (0.94,1.75), 0.123	<b>2.01 (1.32,3.06), 0.001</b>	<b>1.59 (1.09,2.31), 0.015</b>
Age at phase transition (/mo)		<b>0.76 (0.58,0.99), 0.044</b>	0.71 (0.46,1.08), 0.111	1.14 (0.69,1.89), 0.608	<b>0.55 (0.34,0.91), 0.020</b>
Gestational age-adjusted birth length (/cm)		1.00 (0.94,1.06), 0.937	0.98 (0.88,1.08), 0.620	0.98 (0.86,1.10), 0.698	1.01 (0.90,1.13), 0.868
Duration of exclusive breastfeeding	≥ 3 months vs. < 3 months	0.95 (0.72,1.26), 0.729	0.95 (0.61,1.46), 0.801	0.85 (0.45,1.60), 0.620	1.04 (0.62,1.74), 0.892
Sex	Female vs. Male	0.67 (0.28,1.56), 0.350	1.45 (0.36,5.84), 0.603	0.23 (0.05,1.06), 0.060	0.90 (0.18,4.50), 0.900
Country	Finland vs. US	<b>1.75 (1.24,2.48), 0.002</b>	1.70 (0.99,2.91), 0.053	<b>2.89 (1.52,5.51), 0.001</b>	0.95 (0.49,1.86), 0.889
	Germany vs. US	1.04 (0.64,1.68), 0.878	1.16 (0.52,2.58), 0.711	0.49 (0.12,2.11), 0.341	0.87 (0.39,1.90), 0.720

SUPPLEMENTARY DATA

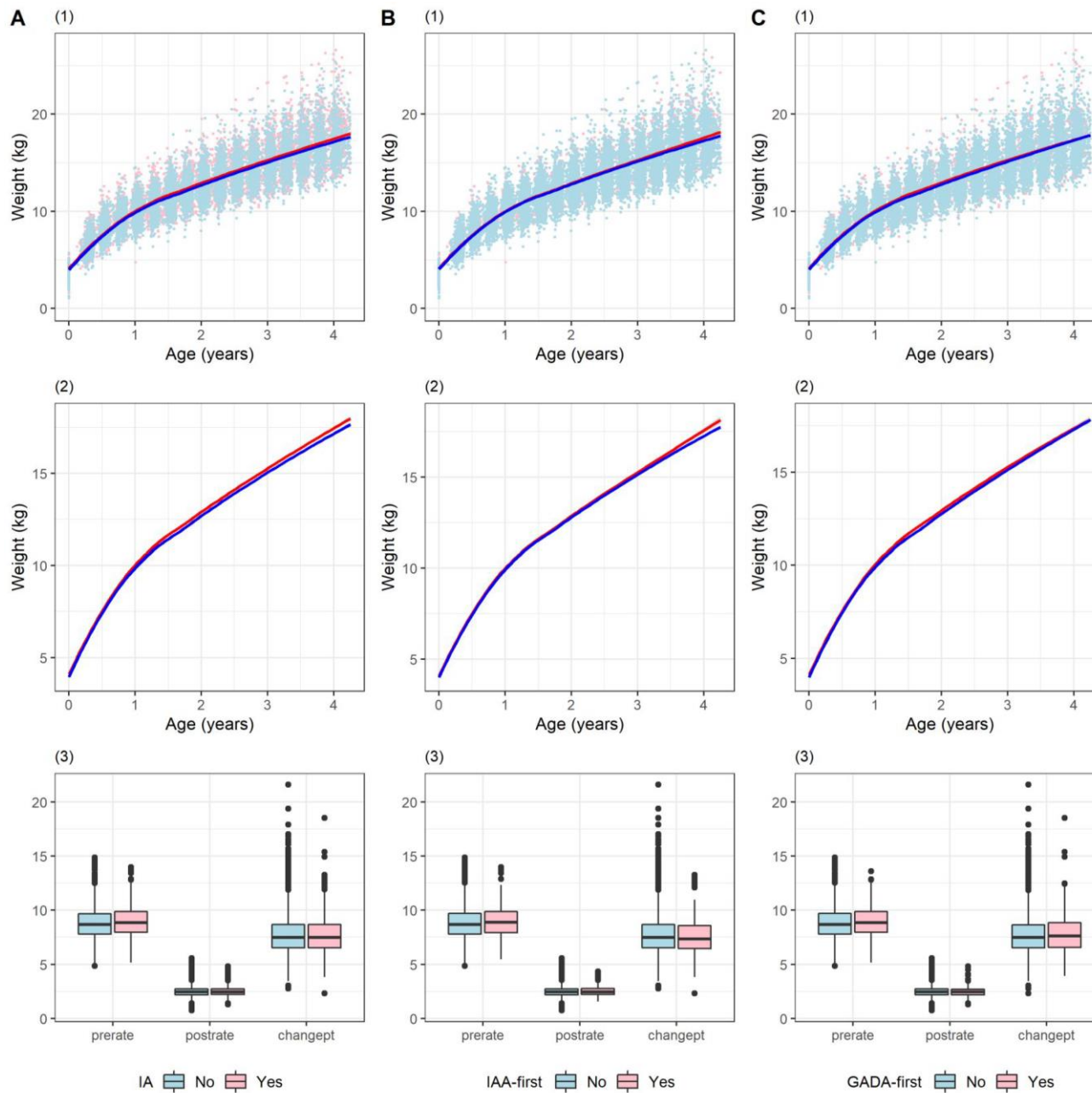
	Sweden vs. US	0.99 (0.71,1.39), 0.970	1.04 (0.60,1.79), 0.902	0.61 (0.31,1.20), 0.152	0.97 (0.54,1.73), 0.913
Family history of T1D	Yes vs. No	<b>1.48 (1.11,1.98), 0.008</b>	1.54 (0.99,2.41), 0.056	<b>1.87 (1.04,3.36), 0.037</b>	1.03 (0.56,1.91), 0.919
HLA DR-DQ genotype	DR3/4 vs. other	1.18 (0.93,1.52), 0.178	<b>1.69 (1.14,2.50), 0.008</b>	1.06 (0.63,1.75), 0.836	0.73 (0.46,1.14), 0.163
Age at seroconversion (/month)		<b>0.98 (0.98,0.99), &lt; 0.001</b>	<b>0.97 (0.95,0.98), &lt; 0.001</b>	<b>0.98 (0.97,0.99), &lt; 0.001</b>	<b>0.99 (0.98,1.00), 0.007</b>
Type of first appearing autoantibody	Multiple autoantibodies vs. IAA only	<b>3.47 (2.58,4.66), &lt; 0.001</b>			
	GADA only vs. IAA only	0.81 (0.58,1.11), 0.185			



## SUPPLEMENTARY DATA

**Supplementary Figure 1.** Weight growth by the status of A: islet autoimmunity (IA), B: IAA-first IA and C: GADA-first IA. In each panel, (1) scatterplot (Yes=pink, No=light blue) and smoothing (loess) mean curves (Yes=red, No=blue); (2) smoothing (loess) mean curves (Yes=red, No=blue) alone and (3) boxplots of growth parameters (prerate=rate in infancy (kg/year), postrate=rate in early childhood (kg/year), changept=age at phase transition (months)).

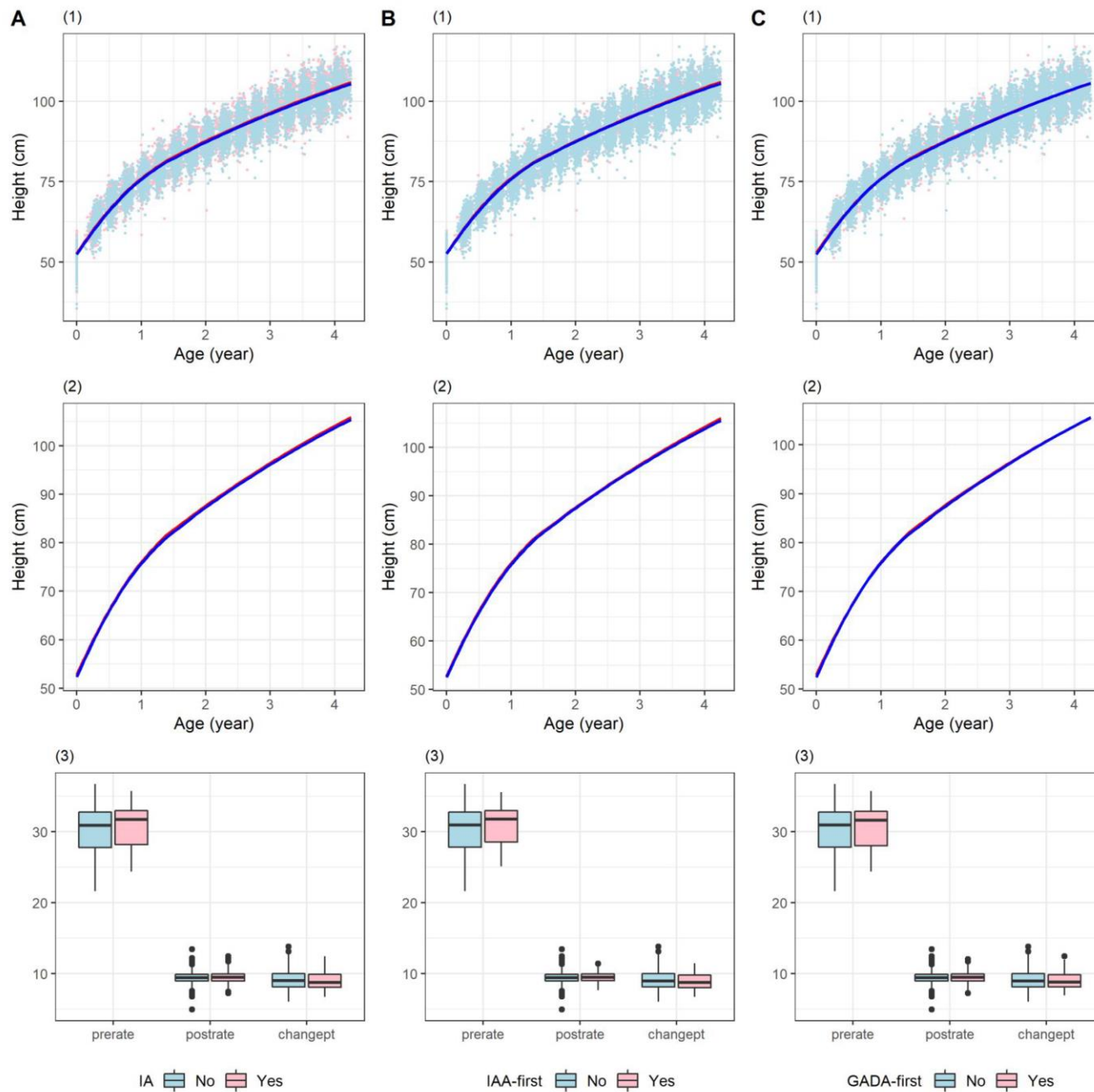
SUPPLEMENTARY DATA



## SUPPLEMENTARY DATA

**Supplementary Figure 2.** Height growth by the status of A: islet autoimmunity (IA), B: IAA-first IA and C: GADA-first IA. In each panel, (1) scatterplot (Yes=pink, No=light blue) and smoothing (loess) mean curves (Yes=red, No=blue); (2) smoothing (loess) mean curves alone (Yes=red, No=blue) and (3) boxplots of growth parameters (prerate=rate in infancy (cm/year), postrate=rate in early childhood (cm/year), changept=age at phase transition (months)).

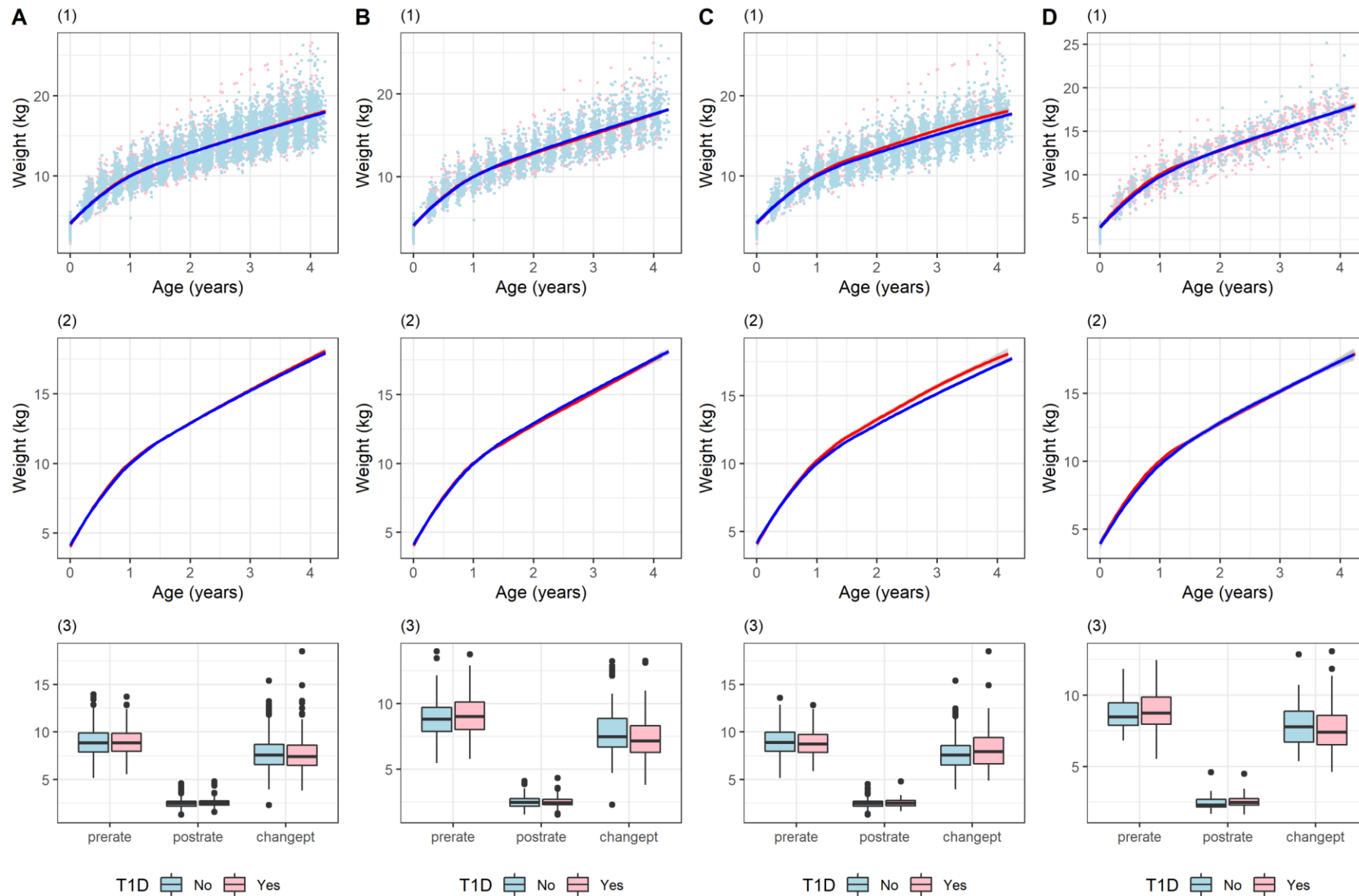
SUPPLEMENTARY DATA



## SUPPLEMENTARY DATA

**Supplementary Figure 3.** Weight growth by the status of T1D among subjects having, A: IA, B: IAA-only at initial seroconversion, C: GADA-only at initial seroconversion, and D: multiple autoantibodies at initial seroconversion. In each panel, (1) scatterplot (Yes=pink, No=light blue) and smoothing (loess) mean curves (Yes=red, No=blue); (2) smoothing (loess) mean curves (Yes=red, No=blue) alone and (3) boxplots of growth parameters (prerate=rate in infancy (kg/year), postrate=rate in early childhood (kg/year), changept=age at phase transition (months)).

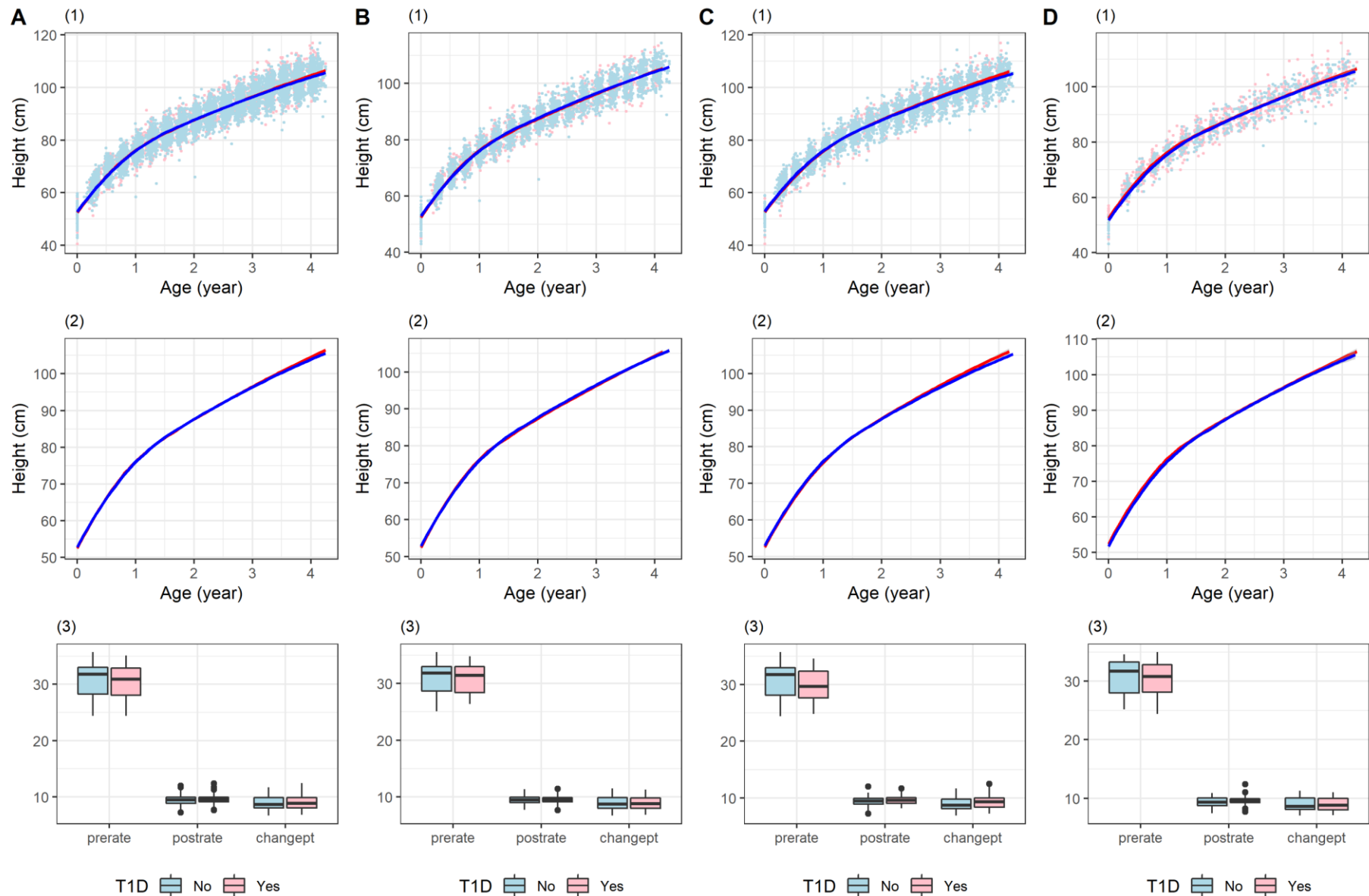
SUPPLEMENTARY DATA



## SUPPLEMENTARY DATA

**Supplementary Figure 4.** Height growth by the status of T1D among subjects having A: IA, B: IAA-only at initial seroconversion, C: GADA-only at initial seroconversion, and D: multiple autoantibodies at initial seroconversion. In each panel, (1) scatterplot (Yes=pink, No=light blue) and smoothing (loess) mean curves (Yes=red, No=blue); (2) smoothing (loess) mean curves (Yes=red, No=blue) alone and (3) boxplots of growth parameters (prerate=rate in infancy (cm/year), postrate=rate in early childhood (cm/year), changept=age at phase transition (months)).

SUPPLEMENTARY DATA





**The TEDDY Study Group**

**Colorado Clinical Center:** Marian Rewers, M.D., Ph.D., PI<sup>1,4,5,6,9,10</sup>, Aaron Barbour, Kimberly Bautista<sup>11</sup>, Judith Baxter<sup>8,9,11</sup>, Daniel Felipe-Morales, Kimberly Driscoll, Ph.D.<sup>8</sup>, Brigitte I. Frohnert, M.D.<sup>2,13</sup>, Marisa Stahl, M.D.<sup>12</sup>, Patricia Gesualdo<sup>2,6,11,13</sup>, Michelle Hoffman<sup>11,12,13</sup>, Rachel Karban<sup>11</sup>, Edwin Liu, M.D.<sup>12</sup>, Jill Norris, Ph.D.<sup>2,3,11</sup>, Stesha Peacock, Hanan Shorrosh, Andrea Steck, M.D.<sup>3,13</sup>, Megan Stern, Erica Villegas<sup>2</sup>, Kathleen Waugh<sup>6,7,11</sup>. University of Colorado, Anschutz Medical Campus, Barbara Davis Center for Childhood Diabetes.

**Finland Clinical Center:** Jorma Toppari, M.D., Ph.D., PI<sup>¥1,4,10,13</sup>, Olli G. Simell, M.D., Ph.D., Annika Adamsson, Ph.D.<sup>^11</sup>, Suvi Ahonen<sup>\*±§</sup>, Mari Åkerlund<sup>\*±§</sup>, Leena Hakola<sup>\*</sup>, Anne Hekkala, M.D.<sup>μ²</sup>, Henna Holappa<sup>μ²</sup>, Heikki Hyöty, M.D., Ph.D.<sup>\*±6</sup>, Anni Ikonen<sup>μ²</sup>, Jorma Ilonen, M.D., Ph.D.<sup>¥³</sup>, Sinikka Jäminki<sup>\*±</sup>, Sanna Jokipuu<sup>^</sup>, Leena Karlsson<sup>^</sup>, Jukka Kero M.D., Ph.D.<sup>¥^</sup>, Miia Kähönen<sup>μ²11,13</sup>, Mikael Knip, M.D., Ph.D.<sup>\*±5</sup>, Minna-Liisa Koivikko<sup>μ²</sup>, Merja Koskinen<sup>\*±</sup>, Mirva Koreasalo<sup>\*±§2</sup>, Kalle Kurppa, M.D., Ph.D.<sup>\*±12</sup>, Jarita Kytölä<sup>\*±</sup>, Tiina Latva-aho<sup>μ²</sup>, Katri Lindfors, Ph.D.<sup>\*12</sup>, Maria Lönnrot, M.D., Ph.D.<sup>\*±6</sup>, Elina Mäntymäki<sup>^</sup>, Markus Mattila<sup>\*</sup>, Maija Miettinen<sup>§2</sup>, Katja Multasuo<sup>μ²</sup>, Teija Mykkänen<sup>μ²</sup>, Tiina Niininen<sup>±\*11</sup>, Sari Niinistö<sup>±§2</sup>, Mia Nyblom<sup>\*±</sup>, Sami Oikarinen, Ph.D.<sup>\*±</sup>, Paula Ollikainen<sup>μ²</sup>, Zhian Othmani<sup>^</sup>, Sirpa Pohjola<sup>μ²</sup>, Petra Rajala<sup>^</sup>, Jenna Rautanen<sup>±§</sup>, Anne Riikonen<sup>\*±§2</sup>, Eija Riski<sup>^</sup>, Miia Pekkola<sup>\*±</sup>, Minna Romo<sup>^</sup>, Satu Ruohonen<sup>^</sup>, Satu Simell, M.D., Ph.D.<sup>¥12</sup>, Maija Sjöberg<sup>^</sup>, Aino Stenius<sup>μ²11</sup>, Päivi Tossavainen, M.D.<sup>μ²</sup>, Mari Vähä-Mäkilä<sup>¥</sup>, Sini Vainionpää<sup>^</sup>, Eeva Varjonen<sup>^11</sup>, Riitta Veijola, M.D., Ph.D.<sup>μ²13</sup>, Irene Viinikangas<sup>μ²</sup>, Suvi M. Virtanen, M.D., Ph.D.<sup>\*±§2</sup>. ¥University of Turku, \*Tampere University, <sup>μ</sup>University of Oulu, <sup>^</sup>Turku University Hospital, Hospital District of Southwest Finland, <sup>±</sup>Tampere University Hospital, <sup>²</sup>Oulu University Hospital, <sup>§</sup>National Institute for Health and Welfare, Finland, <sup>¶</sup>University of Kuopio.

**Georgia/Florida Clinical Center:** Jin-Xiong She, Ph.D., PI<sup>1,3,4,10</sup>, Desmond Schatz, M.D.<sup>\*4,5,7,8</sup>, Diane Hopkins<sup>11</sup>, Leigh Steed<sup>11,12,13</sup>, Jennifer Bryant<sup>11</sup>, Katherine Silvis<sup>2</sup>, Michael Haller, M.D.<sup>\*13</sup>, Melissa Gardiner<sup>11</sup>, Richard McIndoe, Ph.D., Ashok Sharma, Stephen W. Anderson, M.D.<sup>^</sup>, Laura Jacobsen, M.D.<sup>\*13</sup>, John Marks, DHSc.<sup>\*11,13</sup>, P.D. Towe<sup>\*</sup>. Center for Biotechnology and Genomic Medicine, Augusta University. \*University of Florida, <sup>^</sup>Pediatric Endocrine Associates, Atlanta.

**Germany Clinical Center:** Anette G. Ziegler, M.D., PI<sup>1,3,4,10</sup>, Ezio Bonifacio Ph.D.<sup>\*5</sup>, Anita Gavrisan, Cigdem Gezginci, Anja Heublein, Verena Hoffmann, Ph.D.<sup>2</sup>, Sandra Hummel, Ph.D.<sup>2</sup>, Andrea Keimer<sup>¥2</sup>, Annette Knopff<sup>7</sup>, Charlotte Koch, Sibylle Koletzko, M.D.<sup>¶12</sup>, Claudia Ramminger<sup>11</sup>, Roswith Roth, Ph.D.<sup>8</sup>, Marlon Scholz, Joanna Stock<sup>8,11,13</sup>, Katharina Warncke, M.D.<sup>13</sup>, Lorena Wendel, Christiane Winkler, Ph.D.<sup>2,11</sup>. Forschergruppe Diabetes e.V. and Institute of Diabetes Research, Helmholtz Zentrum München, Forschergruppe Diabetes, and Klinikum rechts der Isar, Technische Universität München. \*Center for Regenerative Therapies, TU Dresden, <sup>¶</sup>Dr. von Hauner Children's Hospital, Department of Gastroenterology, Ludwig Maximilians University Munich, <sup>¥</sup>University of Bonn, Department of Nutritional Epidemiology.

**Sweden Clinical Center:** Åke Lernmark, Ph.D., PI<sup>1,3,4,5,6,8,9,10</sup>, Daniel Agardh, M.D., Ph.D.<sup>6,12</sup>, Carin Andrén Aronsson, Ph.D.<sup>2,11,12</sup>, Maria Ask, Rasmus Bennet, Corrado Cilio, Ph.D., M.D.<sup>5,6</sup>, Helene Engqvist, Emelie Ericson-Hallström, Annika Fors, Lina Fransson, Thomas Gard, Monika Hansen, Hanna Jisser, Fredrik Johansen, Berglind Jonsdottir, M.D., Ph.D.<sup>11</sup>, Silvija Jovic, Helena Elding Larsson, M.D., Ph.D.<sup>6,13</sup>, Marielle Lindström, Markus Lundgren, M.D., Ph.D.<sup>13</sup>, Marlena Maziarz, Ph.D., Maria Månsson-Martinez, Maria Markan, Jessica Melin<sup>11</sup>,

## SUPPLEMENTARY DATA

Zeliha Mestan, Caroline Nilsson, Karin Ottosson, Kobra Rahmati, Anita Ramelius, Falastin Salami, Anette Sjöberg, Birgitta Sjöberg, Malin Svensson, Carina Törn, Ph.D.<sup>3</sup>, Anne Wallin, Åsa Wimar<sup>13</sup>, Sofie Åberg. Lund University.

**Washington Clinical Center:** William A. Hagopian, M.D., Ph.D., PI<sup>1,3,4,5,6,7,10,12,13</sup>, Michael Killian<sup>6,7,11,12</sup>, Claire Cowen Crouch<sup>11,13</sup>, Jennifer Skidmore<sup>2</sup>, Masumeh Chavoshi, Rachel Hervey, Rachel Lyons, Arlene Meyer, Denise Mulenga<sup>11</sup>, Jared Radtke, Matei Romancik, Davey Schmitt, Sarah Zink. Pacific Northwest Research Institute.

**Pennsylvania Satellite Center:** Dorothy Becker, M.D., Margaret Franciscus, MaryEllen Dalmagro-Elias Smith<sup>2</sup>, Ashi Daftary, M.D., Mary Beth Klein, Chrystal Yates. Children's Hospital of Pittsburgh of UPMC.

**Data Coordinating Center:** Jeffrey P. Krischer, Ph.D., PI<sup>1,4,5,9,10</sup>, Sarah Austin-Gonzalez, Maryouri Avendano, Sandra Baethke, Rasheedah Brown<sup>11</sup>, Brant Burkhardt, Ph.D.<sup>5,6</sup>, Martha Butterworth<sup>2</sup>, Joanna Clasen, David Cuthbertson, Stephen Dankyi, Christopher Eberhard, Steven Fiske<sup>8</sup>, Jennifer Garmeson, Veena Gowda, Kathleen Heyman, Belinda Hsiao, Christina Karges, Francisco Perez Laras, Hye-Seung Lee, Ph.D.<sup>1,2,3,12</sup>, Qian Li, Ph.D.<sup>2,3</sup>, Shu Liu, Xiang Liu, Ph.D.<sup>2,3,8,13</sup>, Kristian Lynch, Ph.D.<sup>5,6,8</sup>, Colleen Maguire, Jamie Malloy, Cristina McCarthy<sup>11</sup>, Aubrie Merrell, Hemang Parikh, Ph.D.<sup>3</sup>, Ryan Quigley, Cassandra Remedios, Chris Shaffer, Laura Smith, Ph.D.<sup>8,11</sup>, Susan Smith<sup>11</sup>, Noah Sulman, Ph.D., Roy Tamura, Ph.D.<sup>1,2,11,12,13</sup>, Dena Tewey, Michael Toth, Ulla Uusitalo, Ph.D.<sup>2</sup>, Kendra Vehik, Ph.D.<sup>4,5,6,8,13</sup>, Ponni Vijayakandipan, Keith Wood, Jimin Yang, Ph.D., R.D.<sup>2</sup>. *Past staff: Michael Abbondandolo, Lori Ballard, David Hadley, Ph.D., Wendy McLeod, Steven Meulemans.* University of South Florida.

**Autoantibody Reference Laboratories:** Liping Yu, M.D.<sup>^5</sup>, Dongmei Miao, M.D.<sup>^</sup>, Polly Bingley, M.D., FRCP\*<sup>5</sup>, Alistair Williams\*, Kyla Chandler\*, Olivia Ball\*, Ilana Kelland\*, Sian Grace\*. <sup>^</sup>Barbara Davis Center for Childhood Diabetes, University of Colorado Denver, \*Bristol Medical School, University of Bristol, UK.

**HLA Reference Laboratory:** William Hagopian<sup>3</sup>, MD, PhD, Masumeh Chavoshi, Jared Radtke, Sarah Zink. Pacific Northwest Research Institute, Seattle WA. (Previously Henry Erlich, Ph.D.<sup>3</sup>, Steven J. Mack, Ph.D., Anna Lisa Fear. Center for Genetics, Children's Hospital Oakland Research Institute.)

**Repository:** Sandra Ke, Niveen Mulholland, Ph.D. NIDDK Biosample Repository at Fisher BioServices.

**SNP Laboratory:** Stephen S. Rich, Ph.D.<sup>3</sup>, Wei-Min Chen, Ph.D.<sup>3</sup>, Suna Onengut-Gumuscu, Ph.D.<sup>3</sup>, Emily Farber, Rebecca Roche Pickin, Ph.D., Jonathan Davis, Jordan Davis, Dan Gallo, Jessica Bonnie, Paul Campolieto. Center for Public Health Genomics, University of Virginia.

**Project scientist:** Beena Akolkar, Ph.D.<sup>1,3,4,5,6,7,9,10</sup>. National Institutes of Diabetes and Digestive and Kidney Diseases.

**Other contributors:** Kasia Bourcier, Ph.D.<sup>5</sup>, National Institutes of Allergy and Infectious Diseases. Thomas Briese, Ph.D.<sup>6</sup>, Columbia

## SUPPLEMENTARY DATA

University. Suzanne Bennett Johnson, Ph.D.<sup>8,11</sup>, Florida State University. Eric Triplett, Ph.D.<sup>6</sup>, University of Florida.

### *Committees:*

<sup>1</sup>Ancillary Studies, <sup>2</sup>Diet, <sup>3</sup>Genetics, <sup>4</sup>Human Subjects/Publicity/Publications, <sup>5</sup>Immune Markers, <sup>6</sup>Infectious Agents, <sup>7</sup>Laboratory Implementation, <sup>8</sup>Psychosocial, <sup>9</sup>Quality Assurance, <sup>10</sup>Steering, <sup>11</sup>Study Coordinators, <sup>12</sup>Celiac Disease, <sup>13</sup>Clinical Implementation.