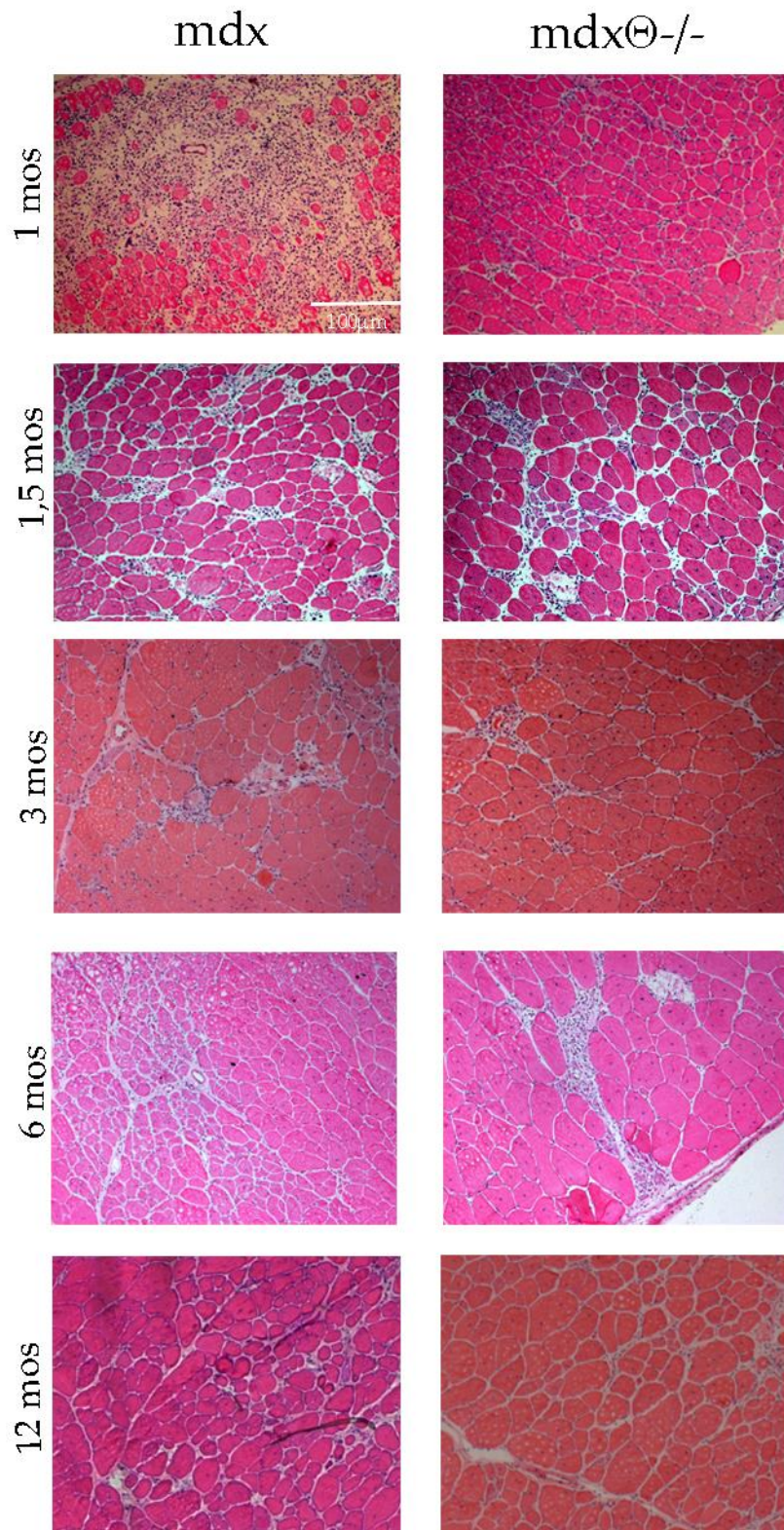
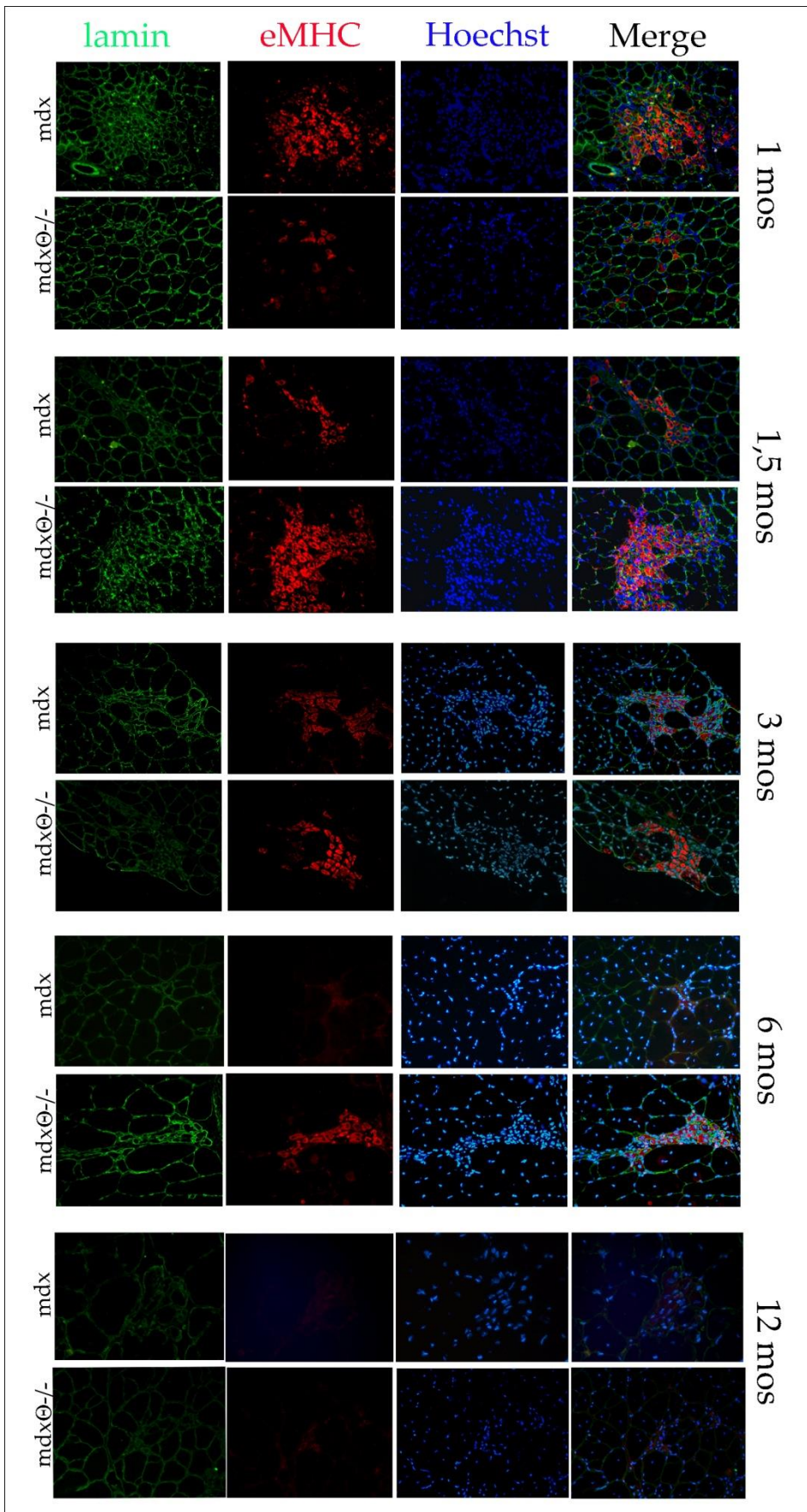


Supplementary Materials:

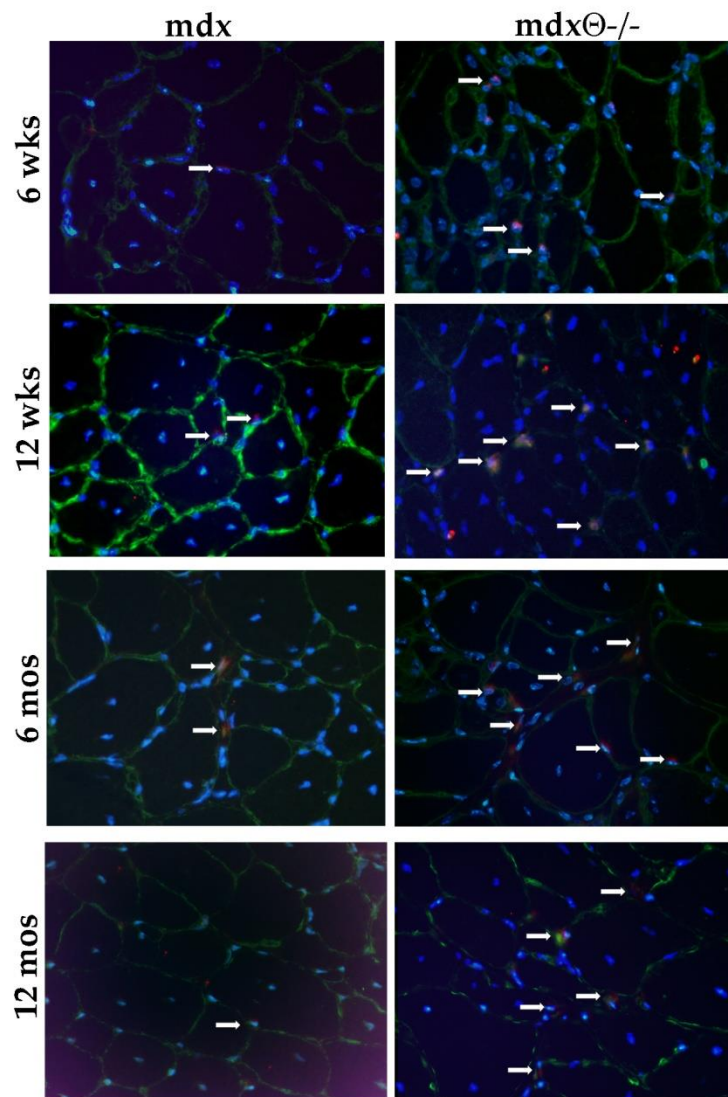


**Supplementary Figure 1.** Representative images of -H&E staining of cryosections derived from mdx and mdx $\ominus$ -/- TA muscle at 1.5, 3, 6 and 12 months (n= 4-5/age/genotype).

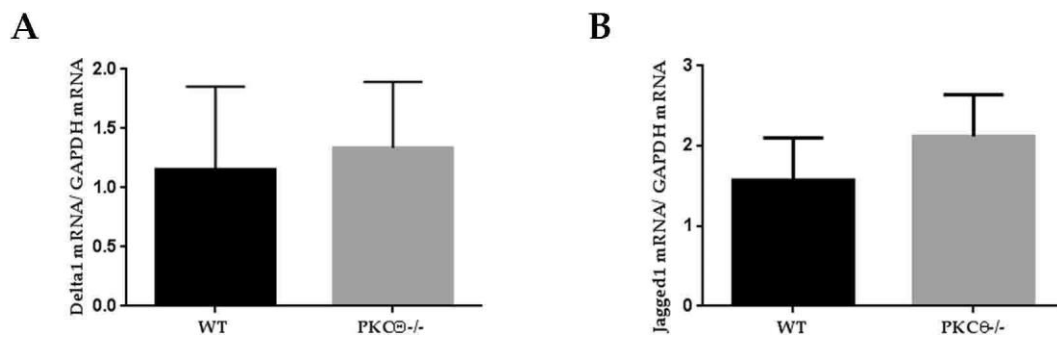


**Supplementary Figure 2.** Representative images of eMHC (red) and Laminin (green) immunofluorescence staining of TA section from 1, 1.5, 3, 6 and 12 months old mdx and mdx $\theta^{-/-}$  mice ( $n=4-5/\text{age/genotype}$ ). Nuclei were counterstained with Hoechst (blue).





**Supplementary Figure 3.** Representative images of Pax7 (red) and Laminin (green) immunofluorescence analysis of TA section from 6 and 12 weeks, 6 and 12 months old mdx and mdx $\theta$ <sup>-/-</sup> mice (n=3/genotype/age). Nuclei were counterstained with Hoechst (blue).



**Supplementary Figure 4.** qRT-analysis of Delta1(A) and Jagged1 (B) expression in healthy WT/bl6 and PKC $\theta$  TA (n=5/genotype) muscle. RNA expression level in WT/bl6 and PKC $\theta$ <sup>-/-</sup> was normalized against GAPDH.

GENE	Primer sequences (5'-3')
Notch1 for rev	GGT CGC AAC TGT GAG AGT GA TTG CTG GCA CAT TCA TTG AT
Notch2 for rev	GCA GGA GCA GGA GGT GAT AG GCG TTT CTT GGA CTC TCC AG
Notch3 for rev	GTC CAG AGG CCA AGA GAC TG CAG AAG GAG GCC AGC ATA AG
Delta1 for rev	CCG GCT GAA GCT ACA GAA AC GAA AGT CCG CCT TCT TGT TG
Pax7 for rev	GTCCCAGTCTTACTGCCAC TGTGGACAGGCTCACGTTTT
MyoD for rev	CGACACCGCCTACTACAGTG GGTGGTGCATCTGCCAAAAG
Numb for rev	CCGGCATGCTCCAATTG TCTGGCTAAGAGCAGGAAAACC
MyoG for rev	GCATGGAGTTCGGTCCCAA TATCCTCCACCGTGATGCTG
GAPDH for rev	ACC CAG AAG ACT GTG GAT GG CAC ATT GGG GGT AGG AAC AC
Jagged1 for rev	ATCGTGCTGCCTTTCAGTTT GGTCACGCGGATCTGATACT

**Supplementary TableS1** Primers used for qPCR