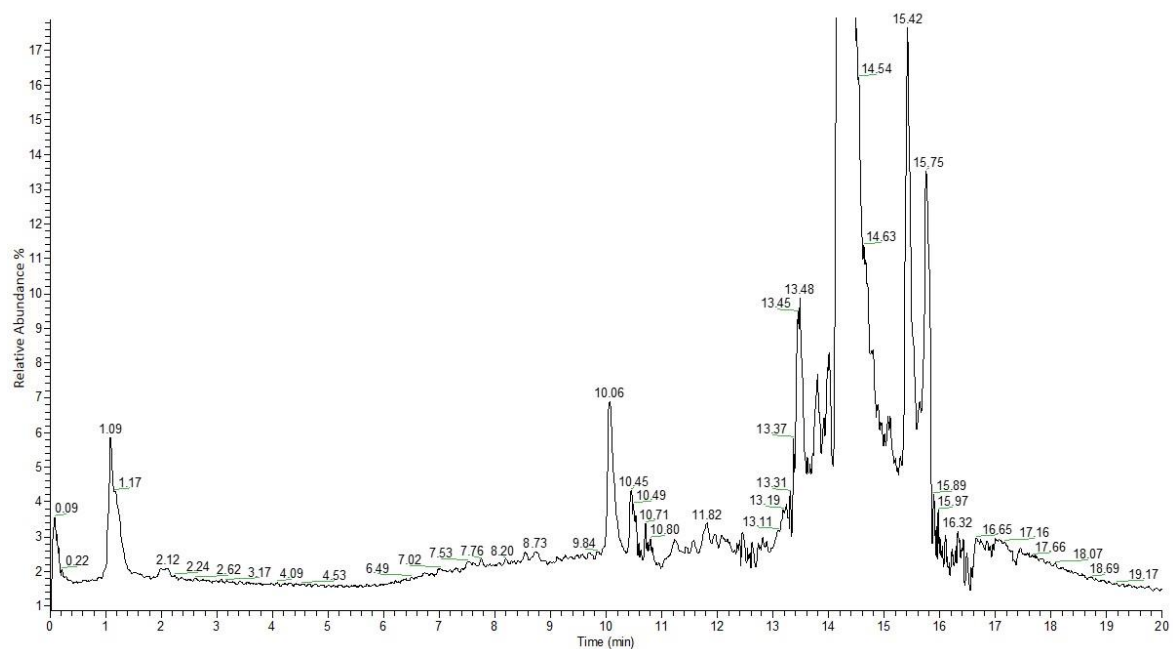
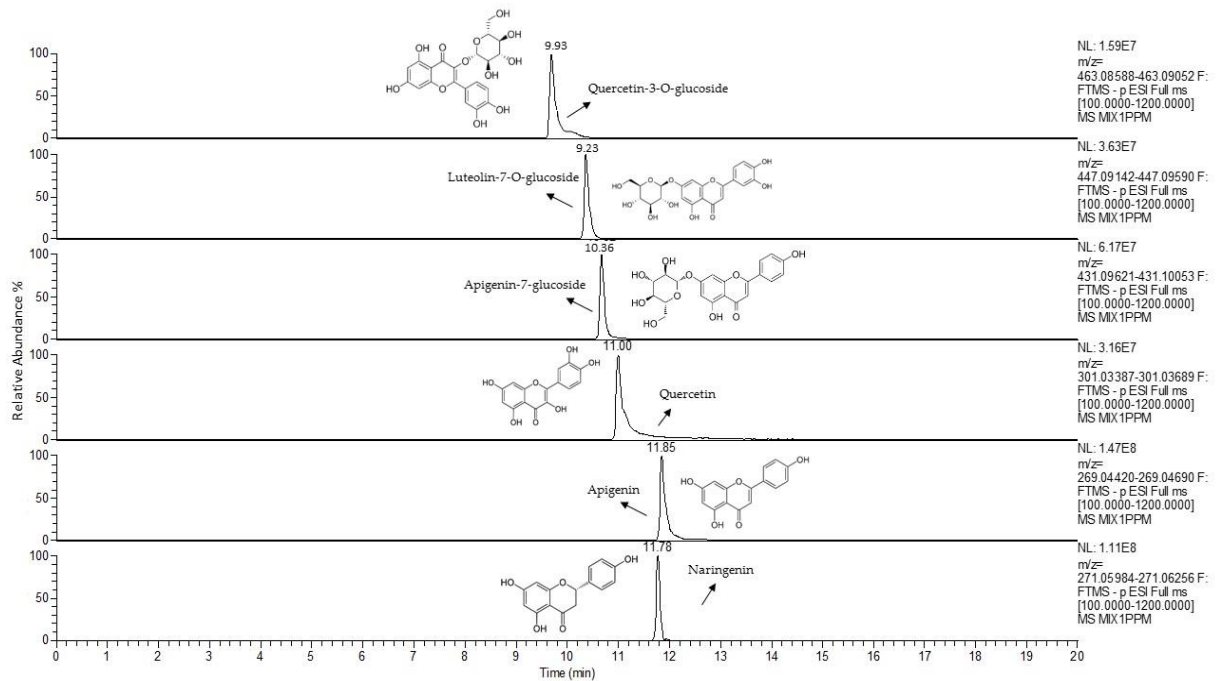
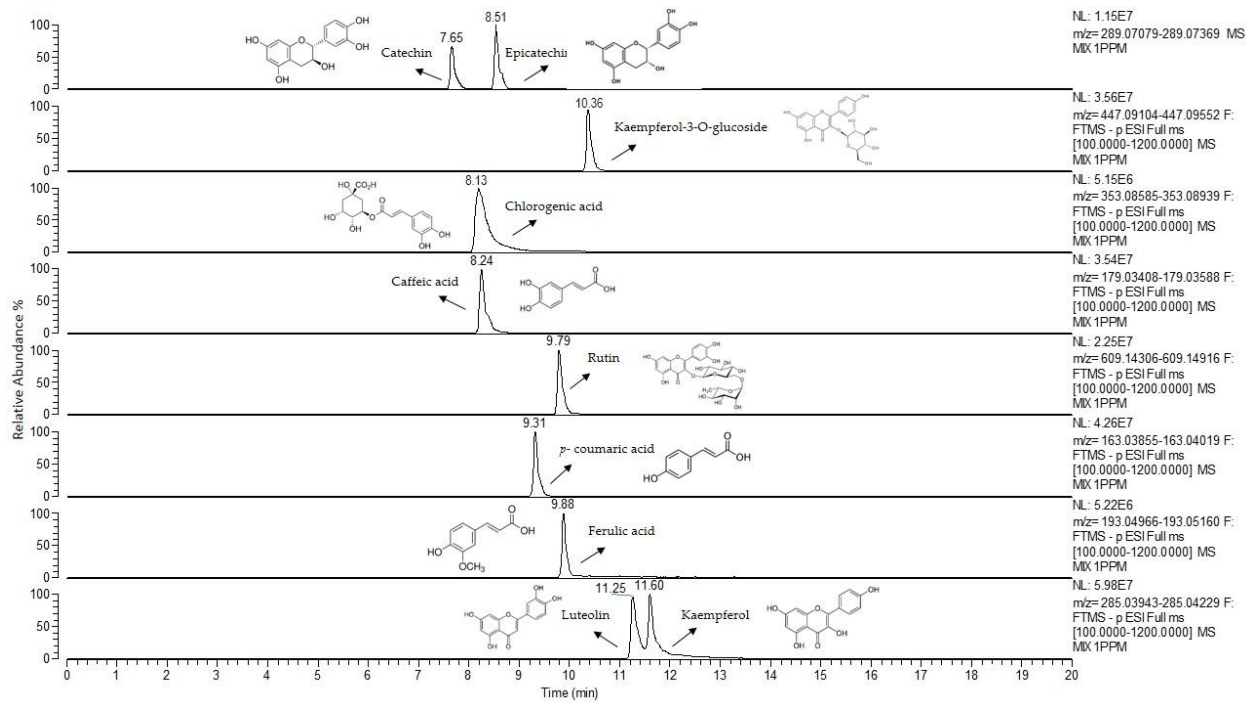
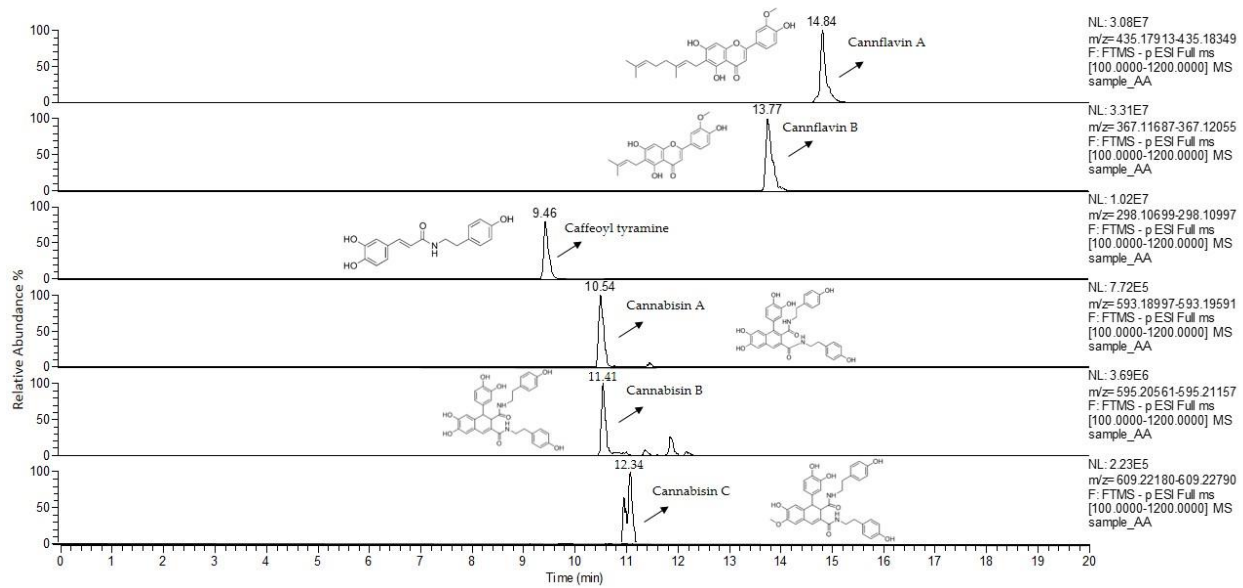


## Supplementary materials:

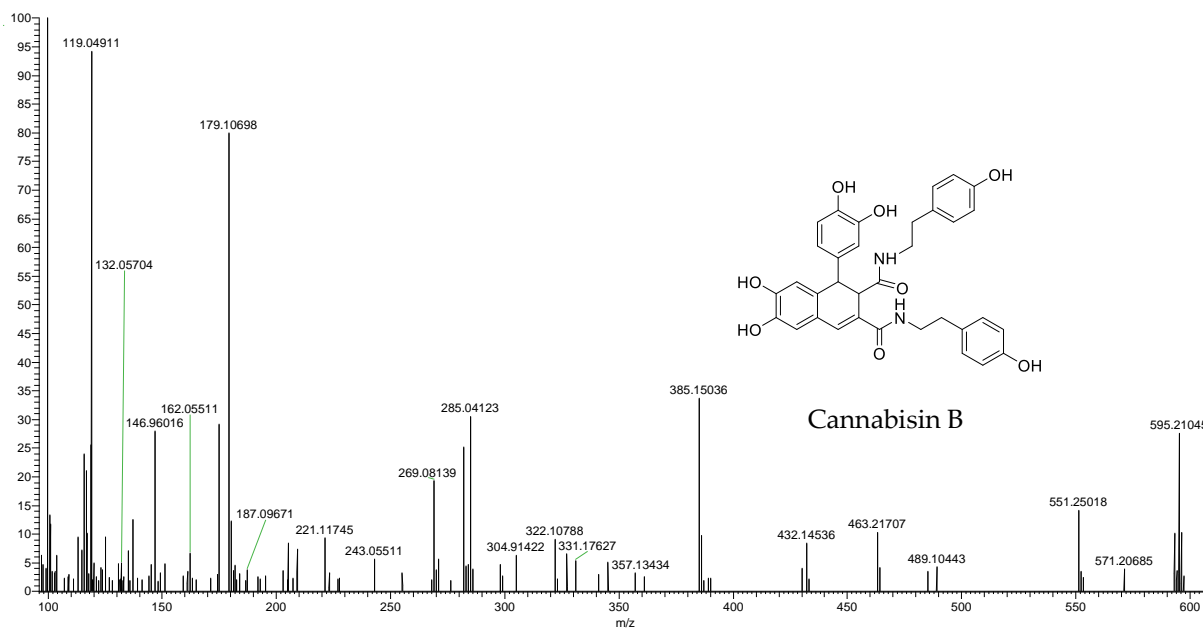
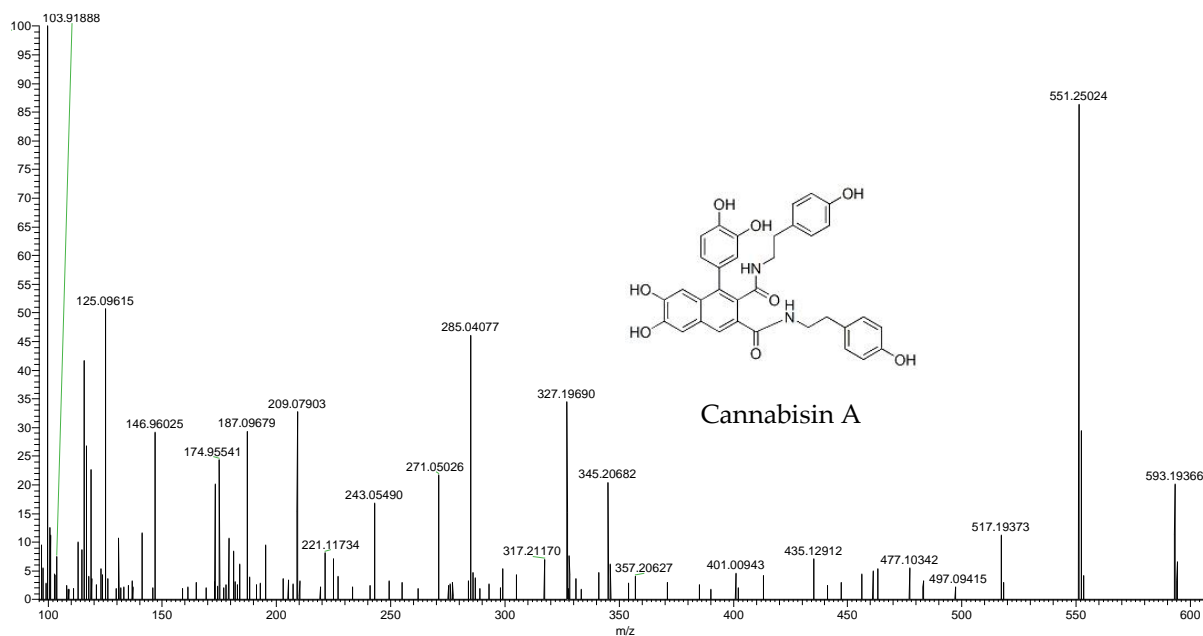


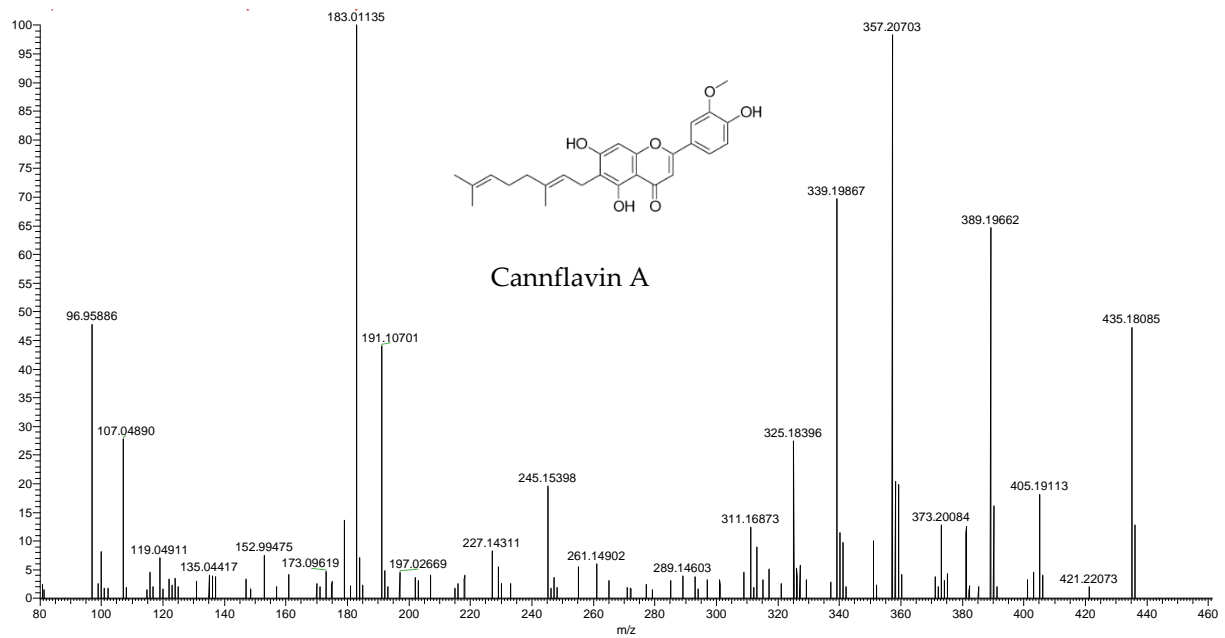
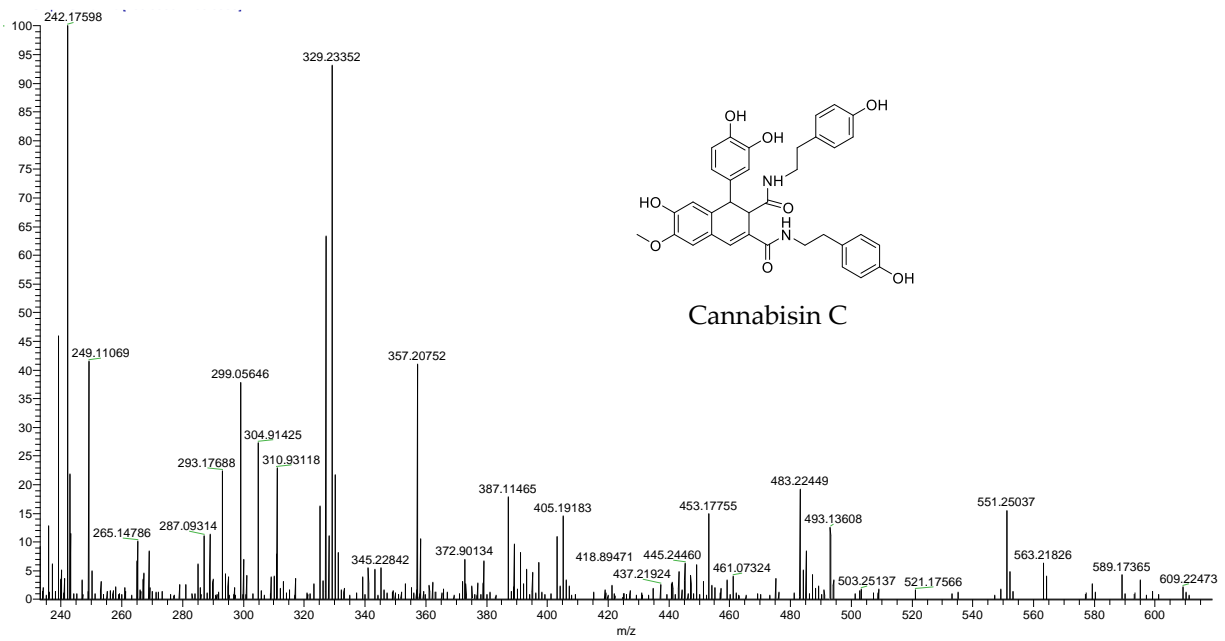
**Supplementary Figure S1.** Total Ion Chromatogram (TIC) of Carmagnola variety of *C. sativa* inflorescences through UHPLC-Q-Orbitrap HRMS.

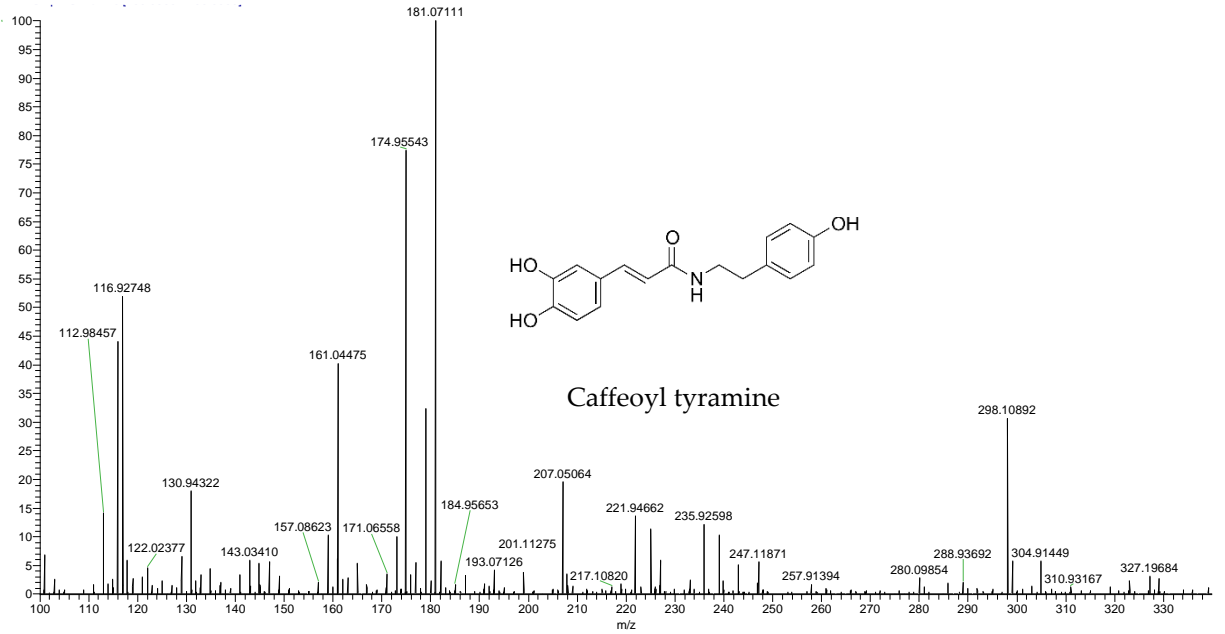
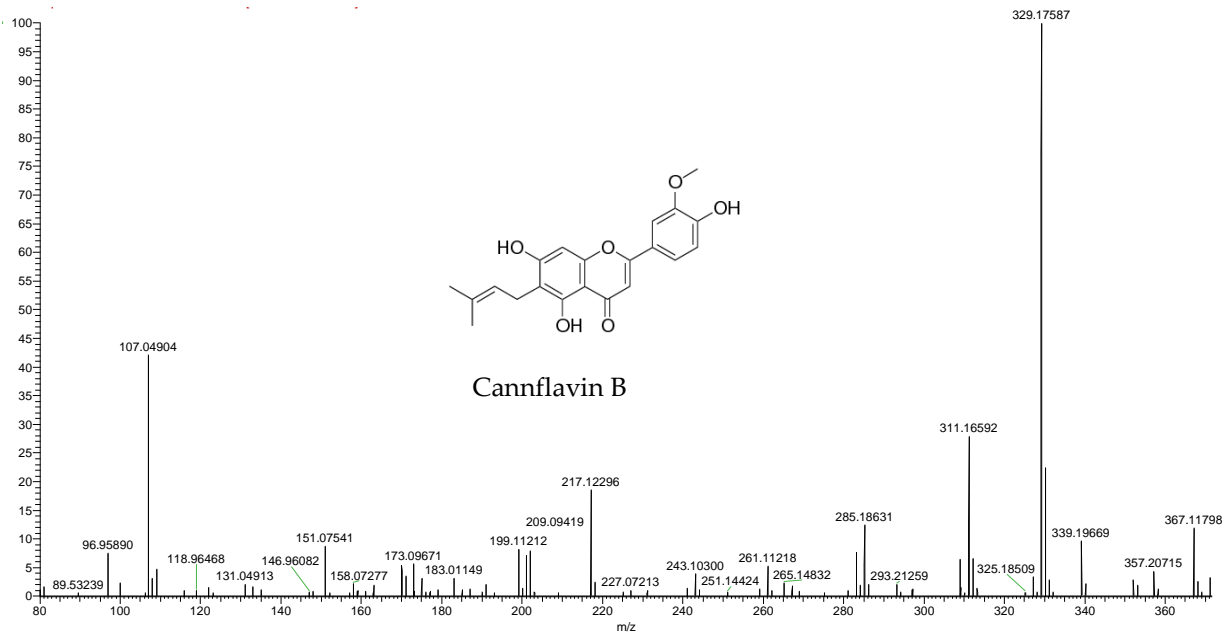


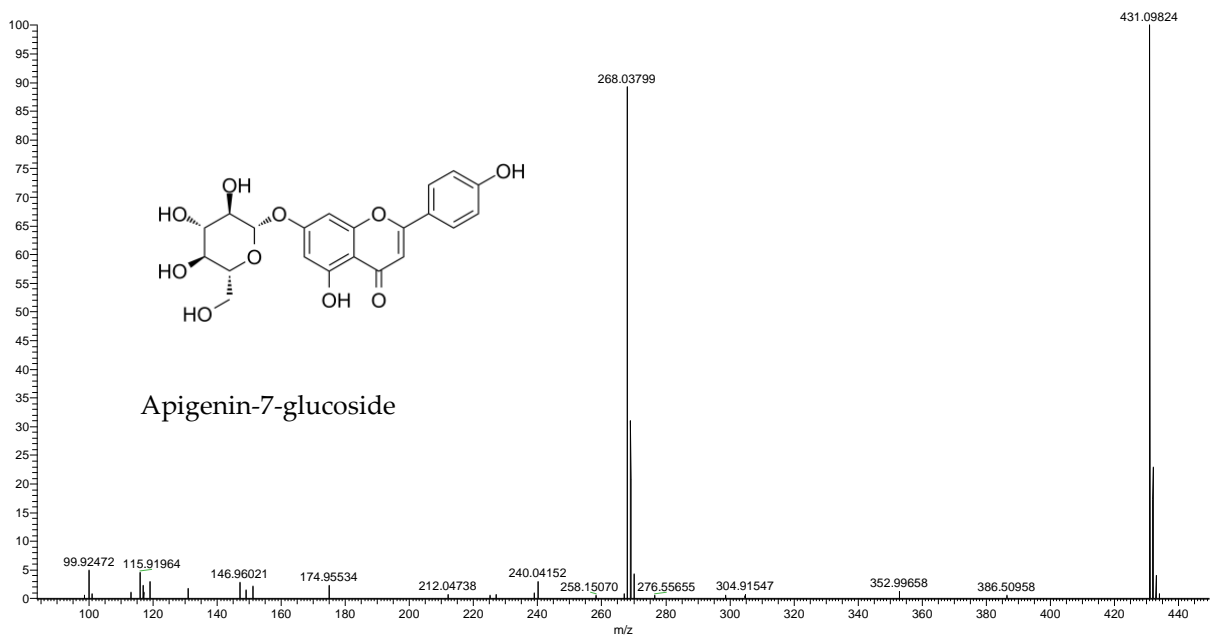
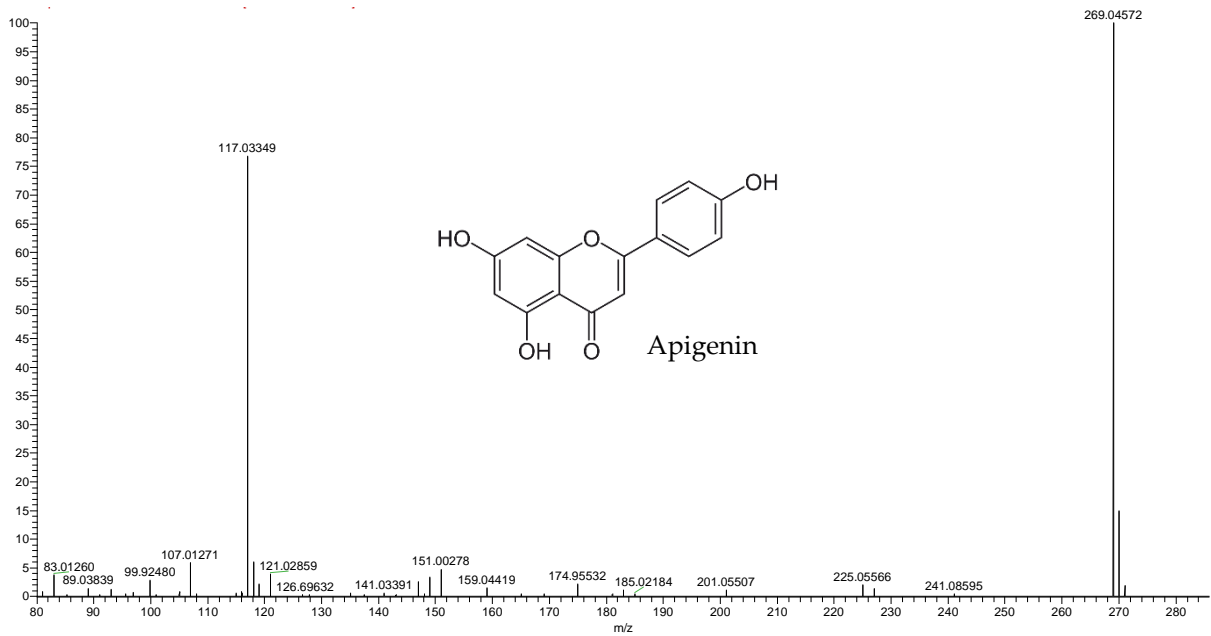


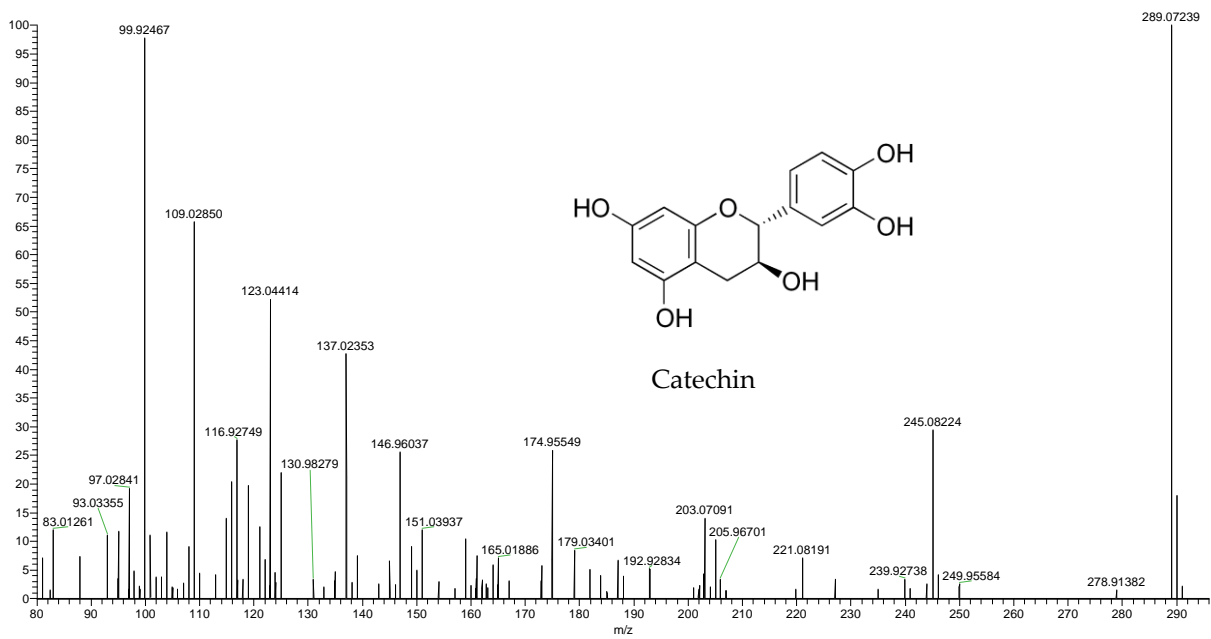
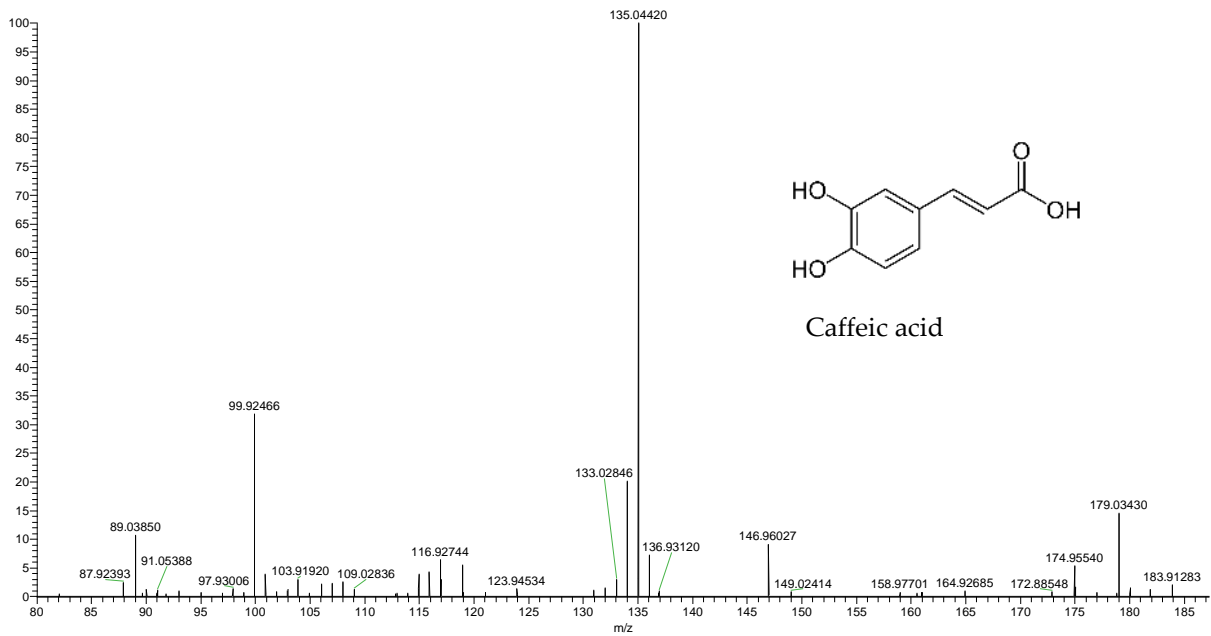
**Supplementary Figure S2.** Plots of twenty-two representative extracted ion chromatograms (EICs). The extracted EICs are represented with their specific  $m/z$ .



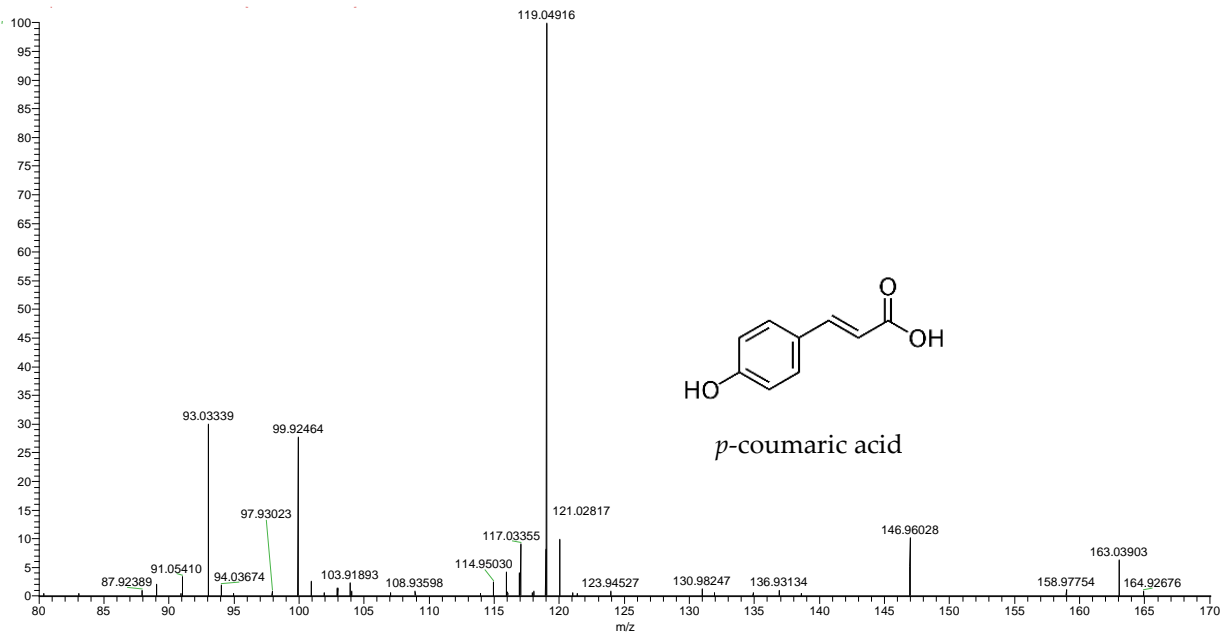
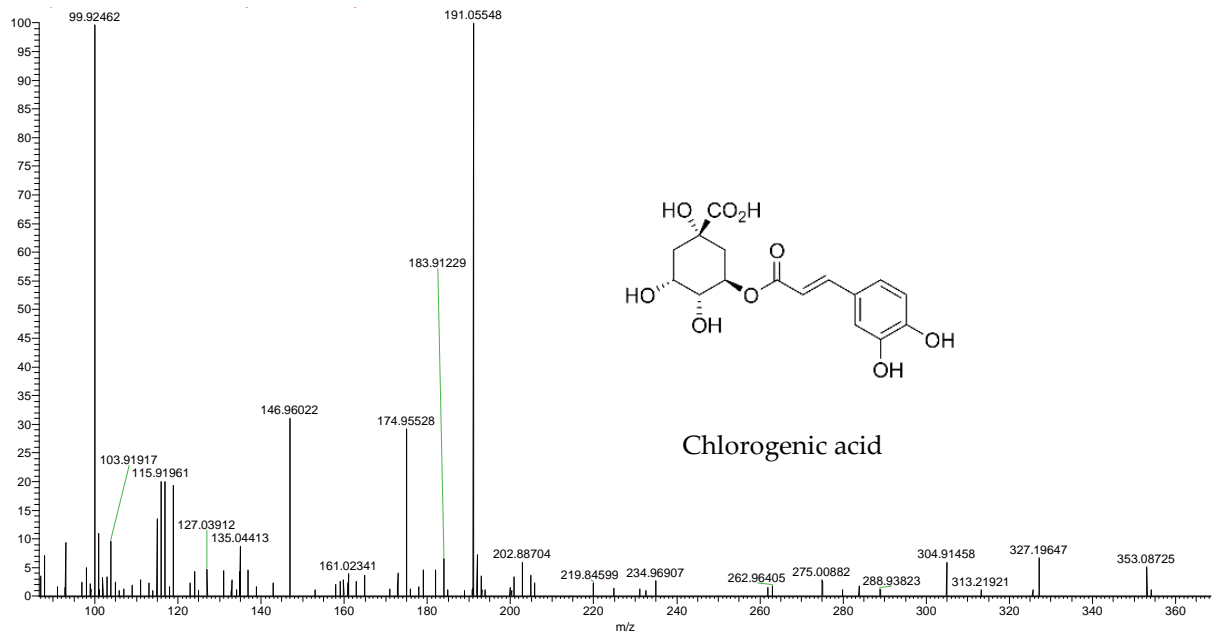


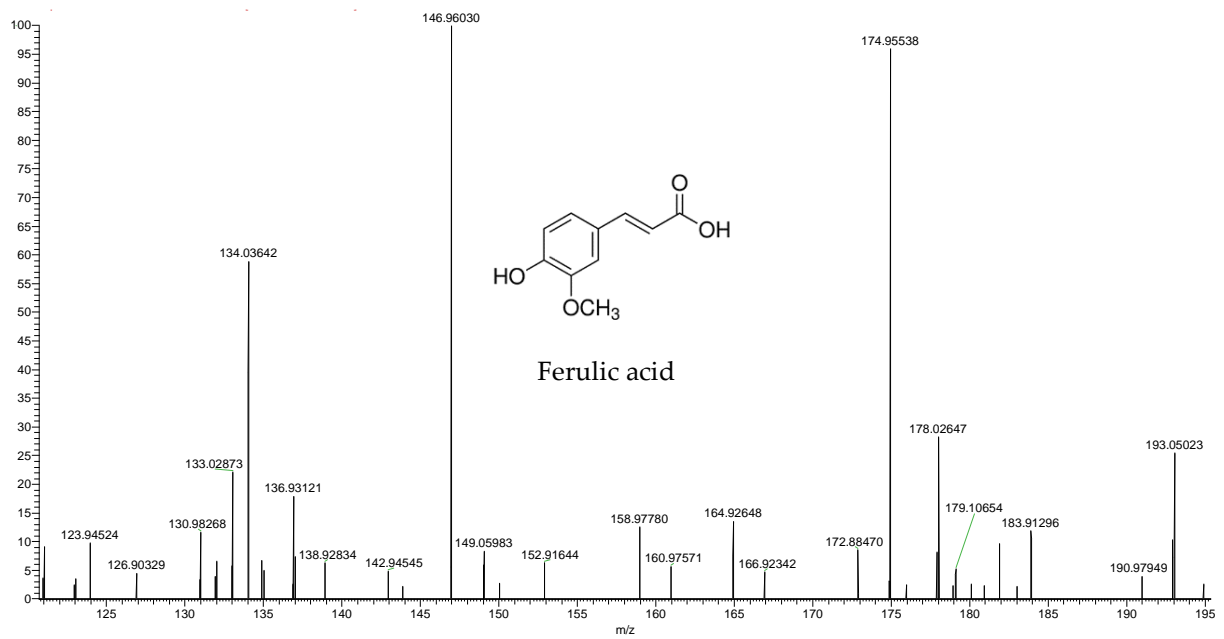
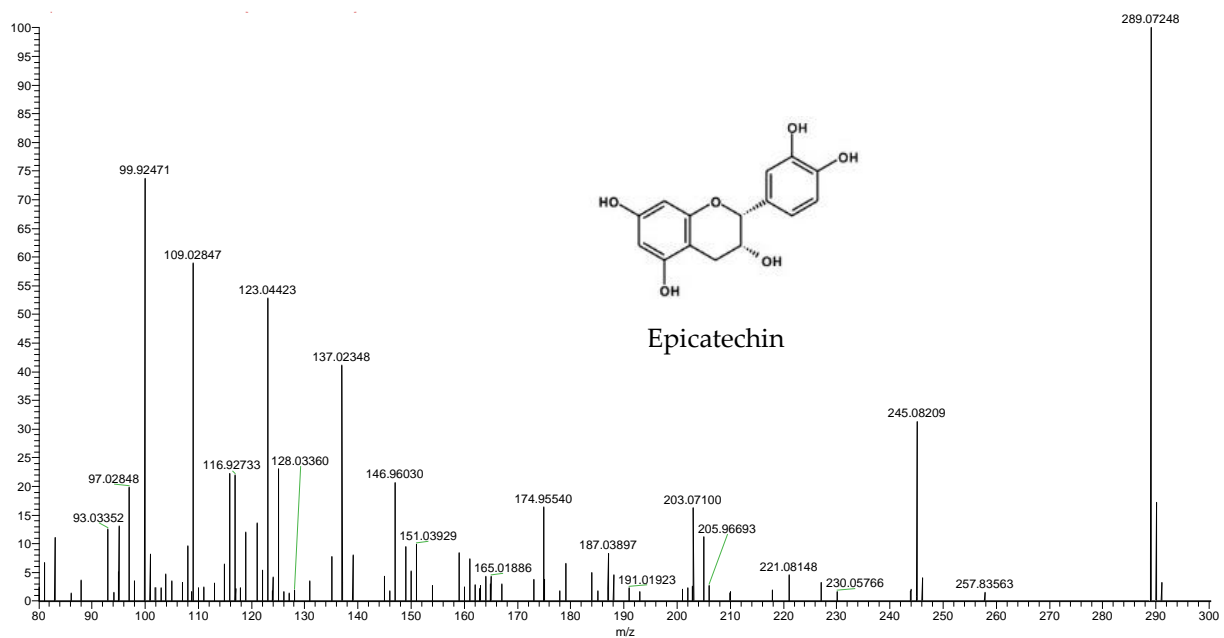


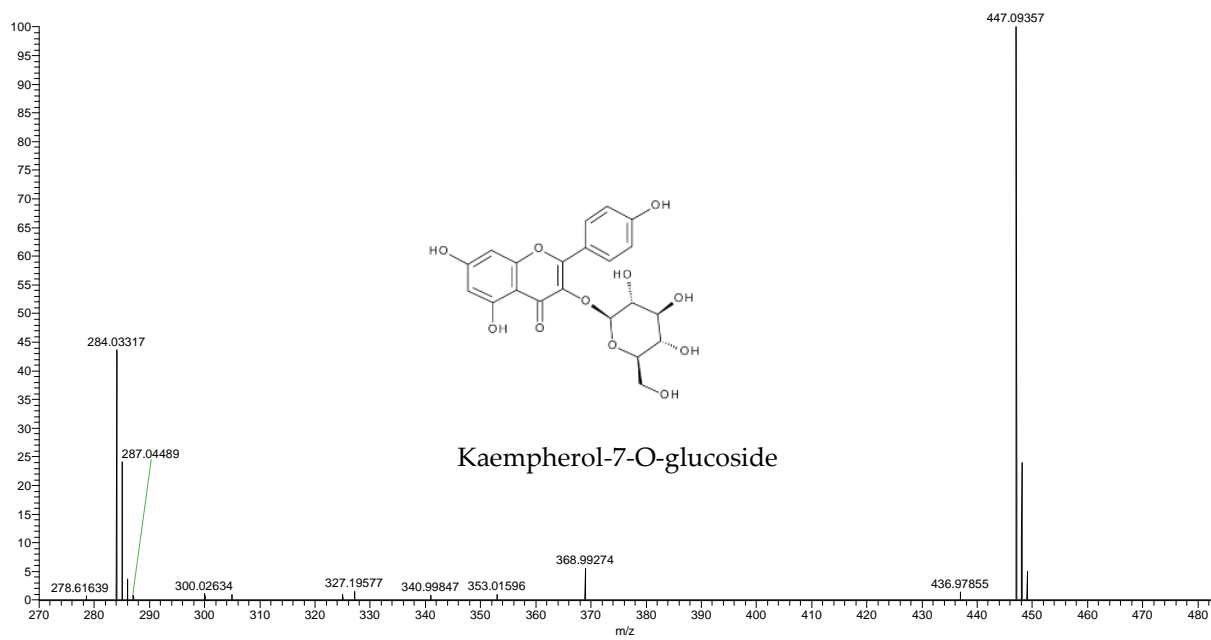
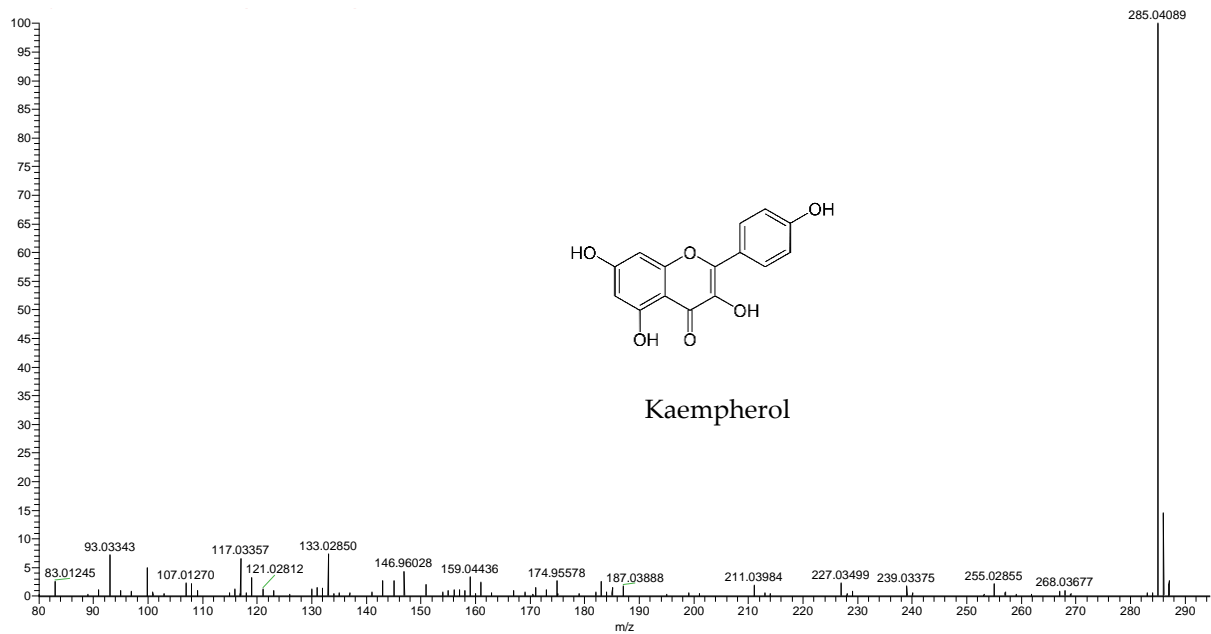


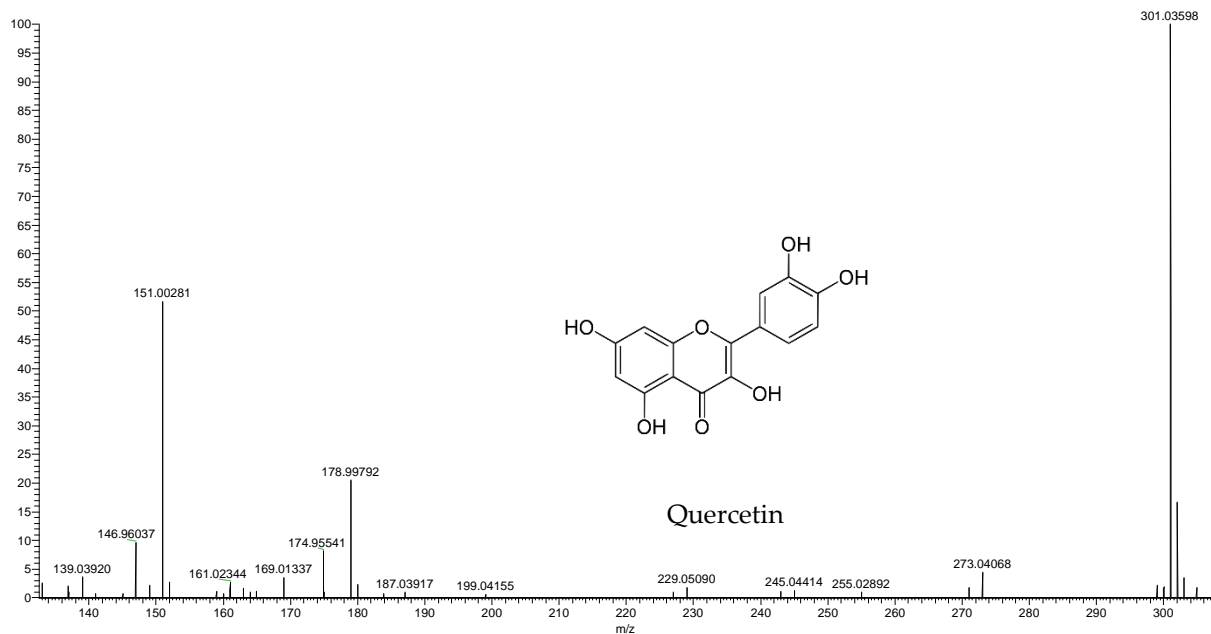
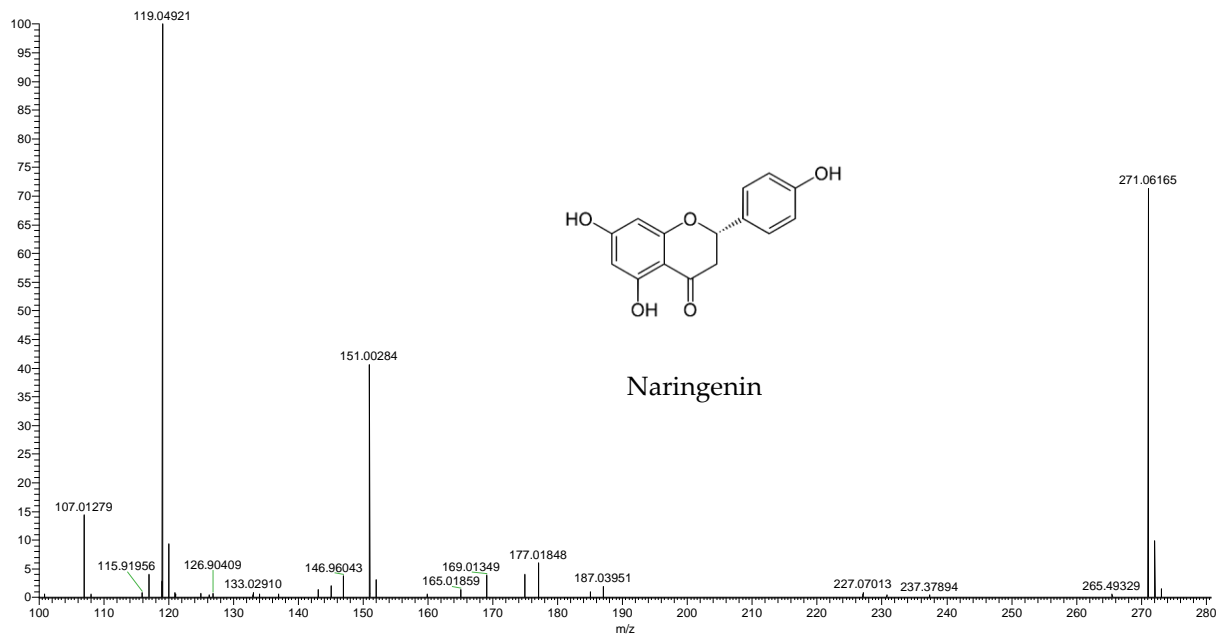


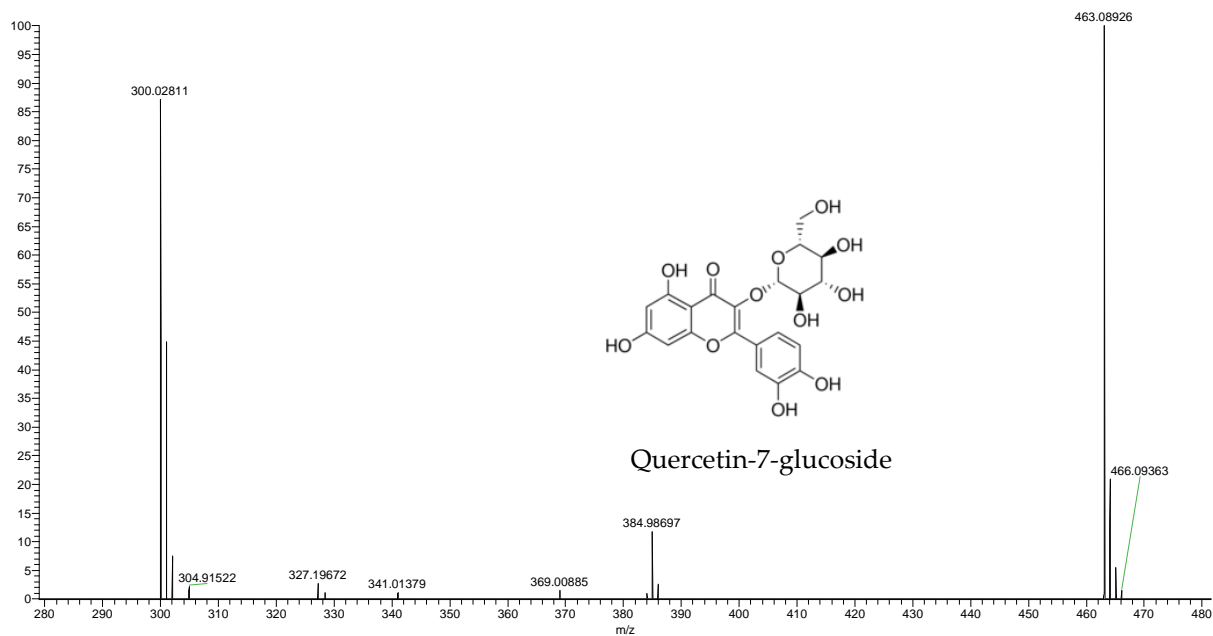
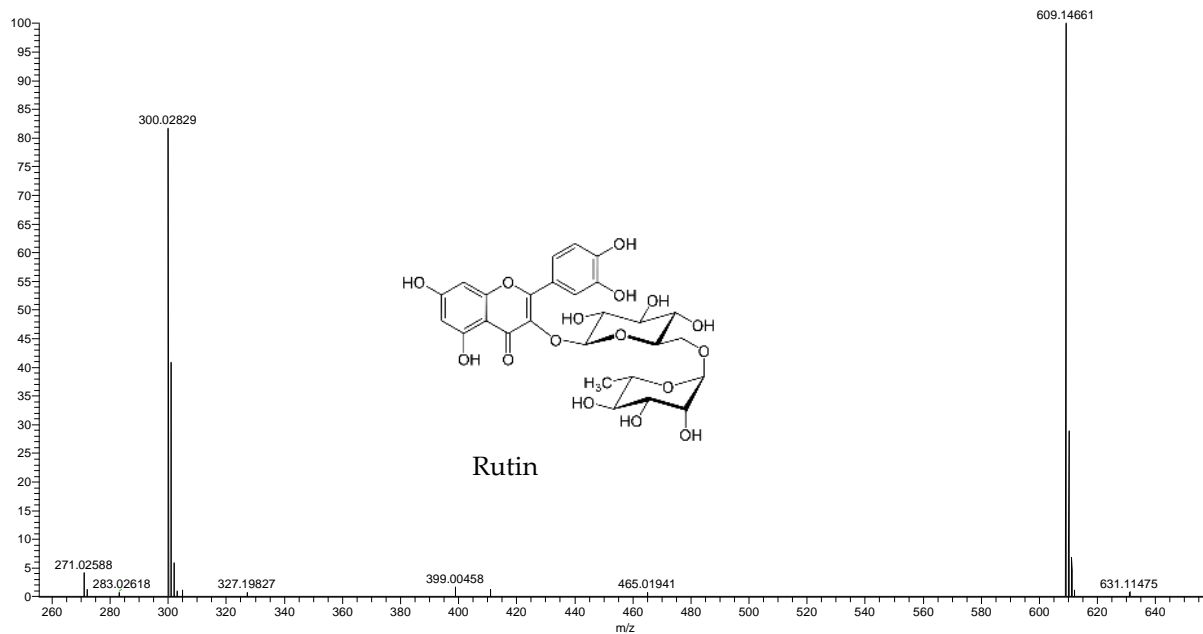


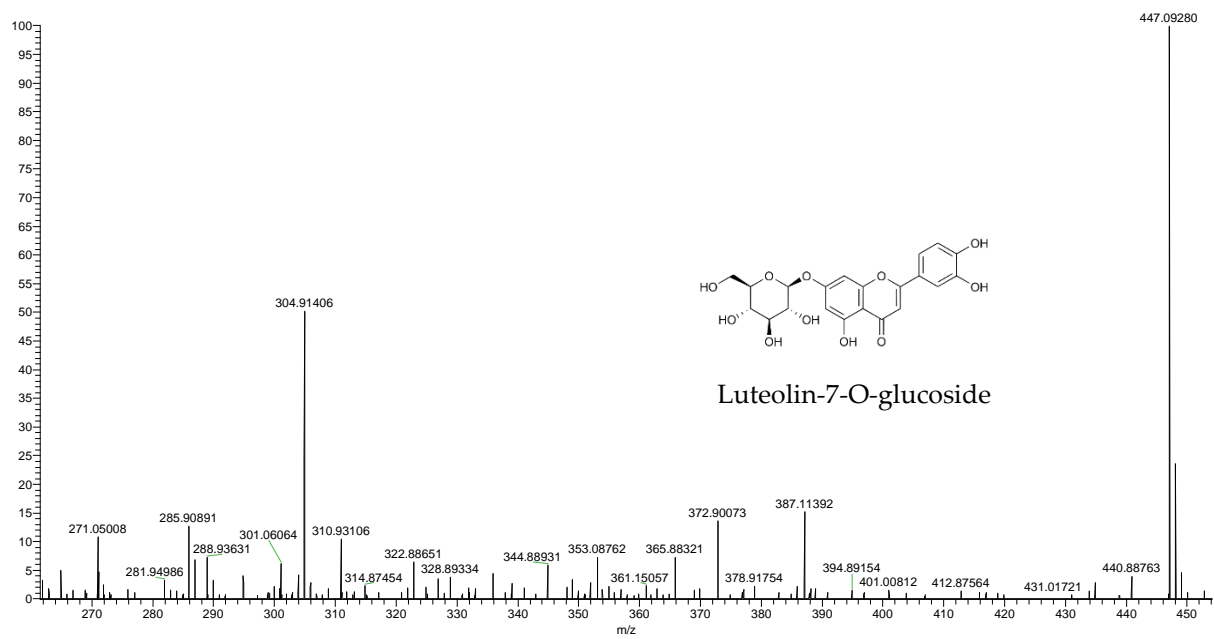
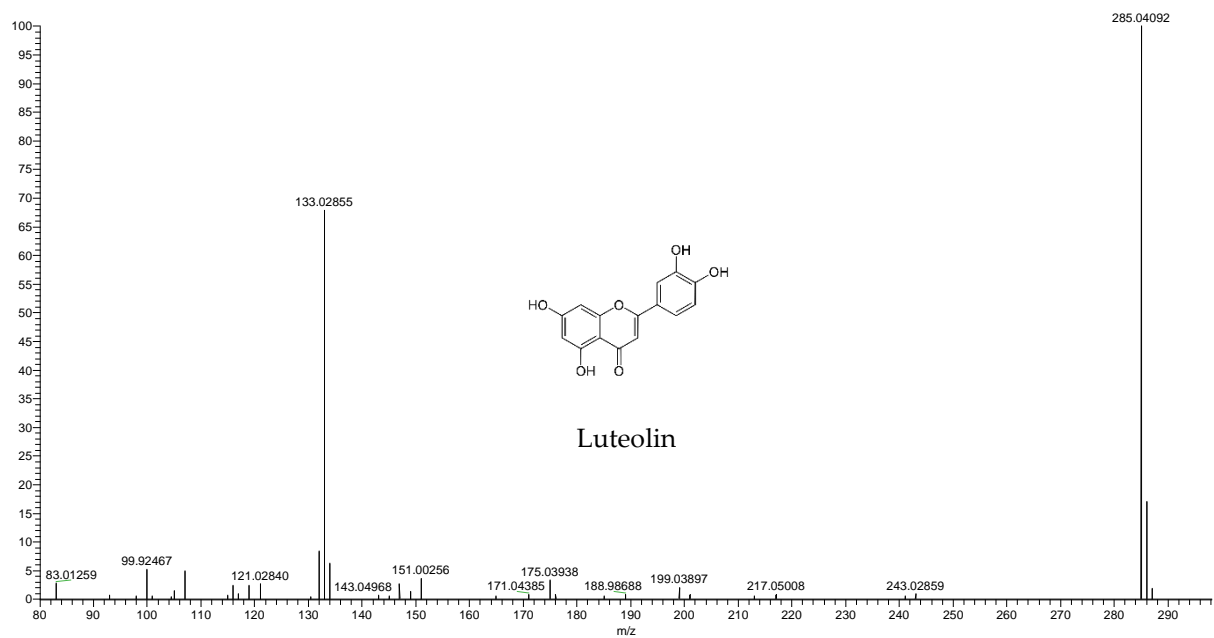












**Supplementary Figure S3.** MS/MS mass spectra of investigated compounds ( $n=22$ ) extracted of *C. sativa* inflorescences.