

Supplementary material

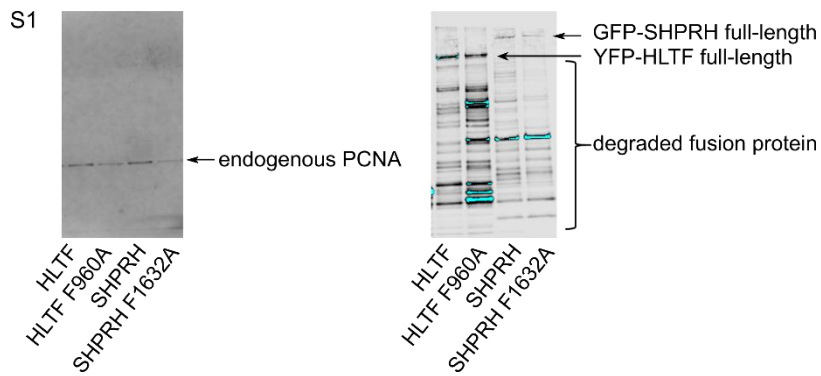


Figure S1. Mutation in APIM in HLTF or SHPRH reduced PCNA pulldown after DNA damage. Western blot analysis of proteins pulled down with α -GFP coupled beads from weakly crosslinked HEK293T cells after overexpression of YFP-HLTF, YFP-HLTF F960A, GFP-SHPRH, GFP-SHPRH F1632A and treatment with 50 μ M MMS. Pulldown of endogenous PCNA (left panel, anti-PCNA), pulldown of the overexpressed proteins (right panel, anti-GFP).