

# Revisiting the interaction of melittin with phospholipid bilayers: the effects of concentration and ionic strength

## Supplementary Information

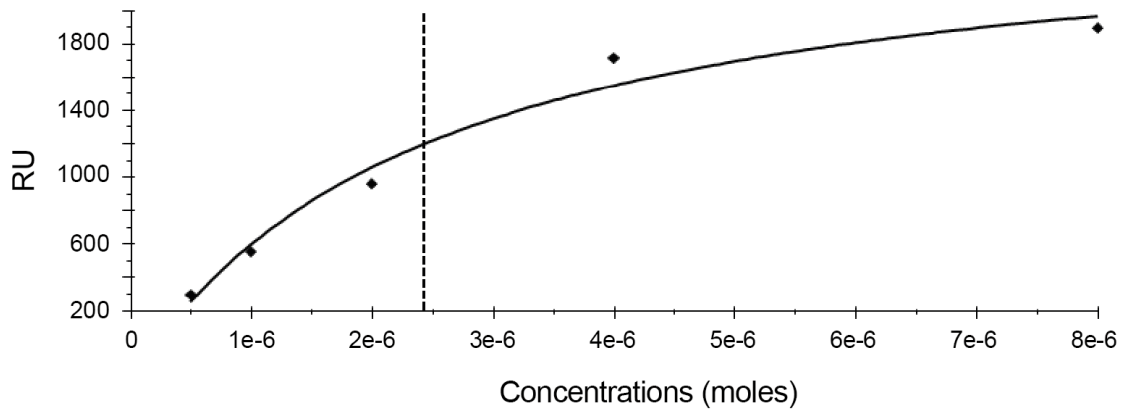
Thiru Sabapathy <sup>1</sup>, Evelyne Deplazes <sup>1,2,†</sup> and Ricardo L. Mancera <sup>1,†,\*</sup>

<sup>1</sup> School of Pharmacy and Biomedical Sciences, Curtin Health Innovation Research Institute, Curtin University, GPO Box U1987, Perth WA 6845, Australia

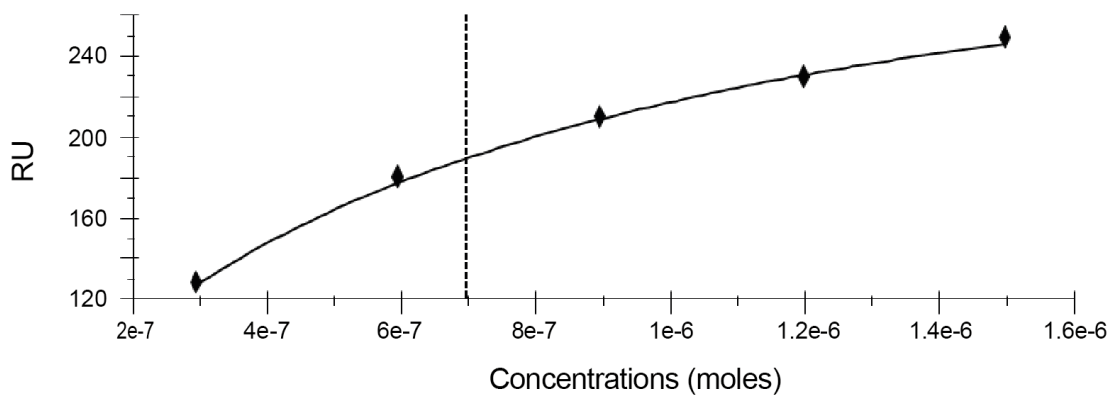
<sup>2</sup> School of Life Sciences, University of Technology Sydney, Ultimo NSW 2007 Australia

\* Correspondence: R.Mancera@curtin.edu.au

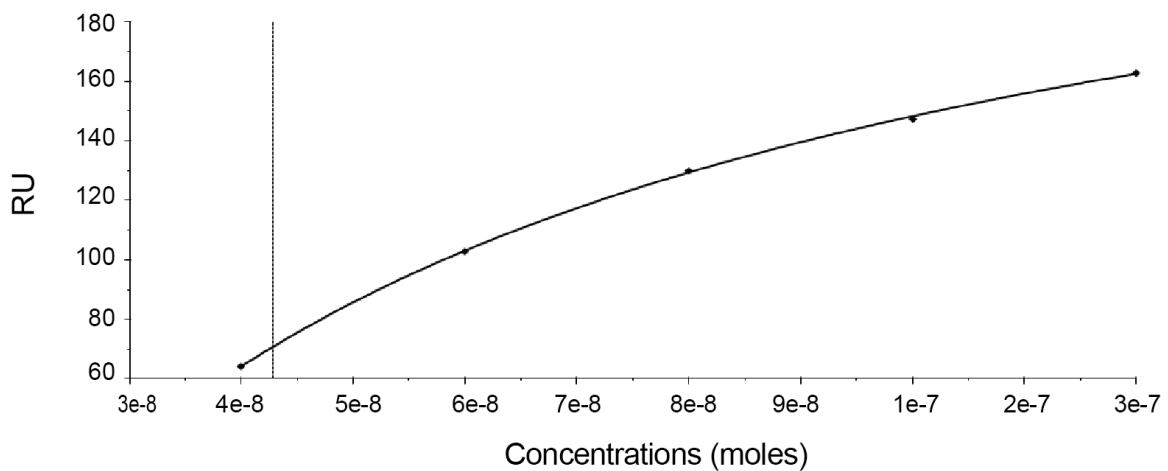
† co- corresponding authors.



**Figure S1** – Steady affinity curve for melittin:POPC interaction derived from multi-cycle kinetics plot– ‘high’ concentration range.



**Figure S2** – Steady affinity curve for melittin:POPC interaction derived from single-cycle kinetics plot – ‘mid’ concentration range



**Figure S3** – Steady affinity curve for melittin:POPC interaction derived from single-cycle kinetics plot– ‘low’ concentration range.