

Supplementary Material

Euryops pectinatus L. flower extract inhibits P-glycoprotein and reverses multi-drug resistance in cancer cells: A mechanistic study

Wafaa M. Elkady¹, Iriny M. Ayoub^{2,*}, Youstra Abdel-Mottaleb³, Mohamed F. ElShafie^{4,5} and Michael Wink^{6,*}

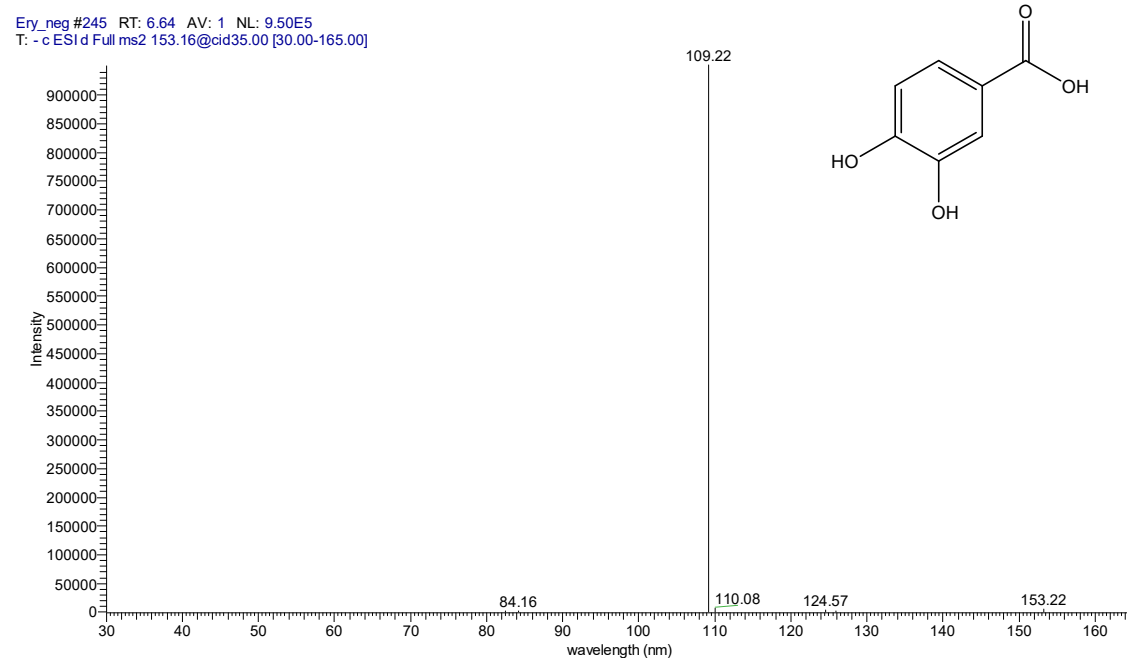


Figure S1. ESI-MS/MS spectrum of protocatechuic acid (**3**) [M-H]⁻ at m/z 153

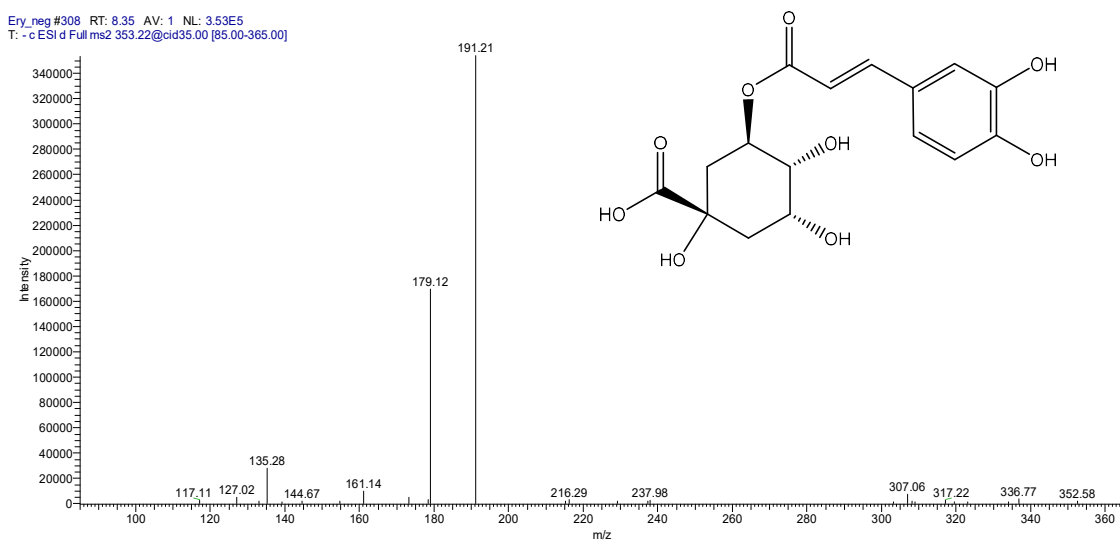


Figure S2. ESI-MS/MS spectrum of chlorogenic acid (**4**) [M-H]⁻ at m/z 353

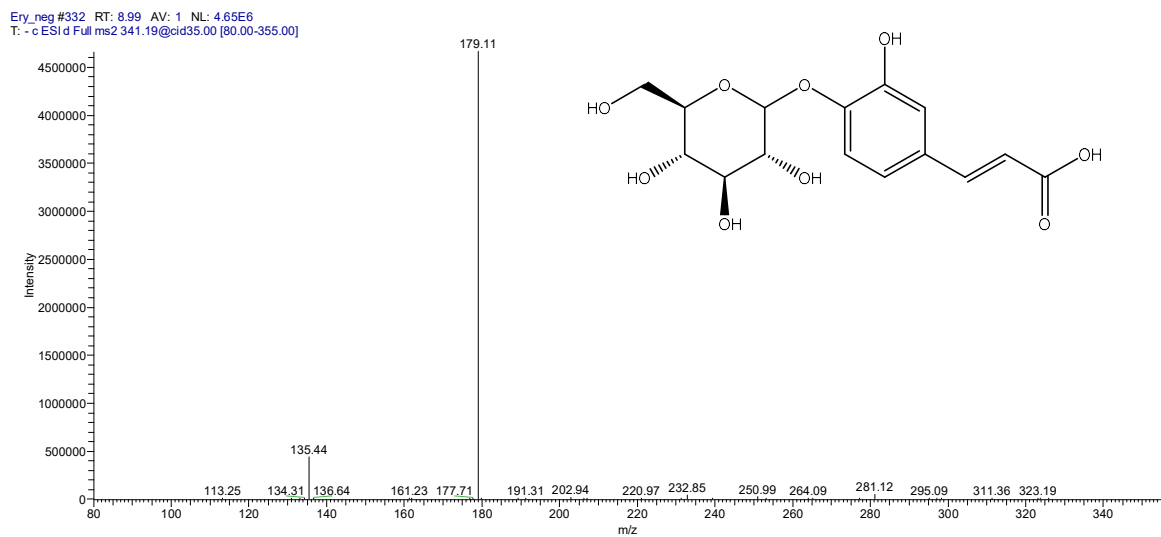


Figure S3. ESI-MS/MS spectrum of caffeic acid-*O*-hexoside (**5**) [M-H]⁻ at *m/z* 341.19

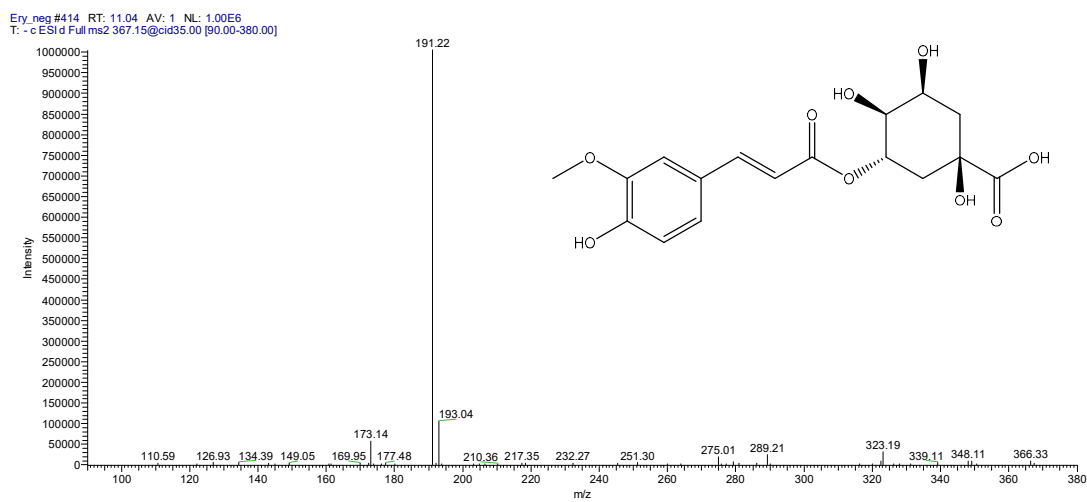


Figure S4. ESI-MS/MS spectrum of feruloyl quinic acid (**10**) [M-H]⁻ at *m/z* 367.15

Ery_neg #420 RT: 11.18 AV: 1 NL: 7.27E6
T: -c ESI d Full ms2 179.10@cid35.00 [35.00-190.00]

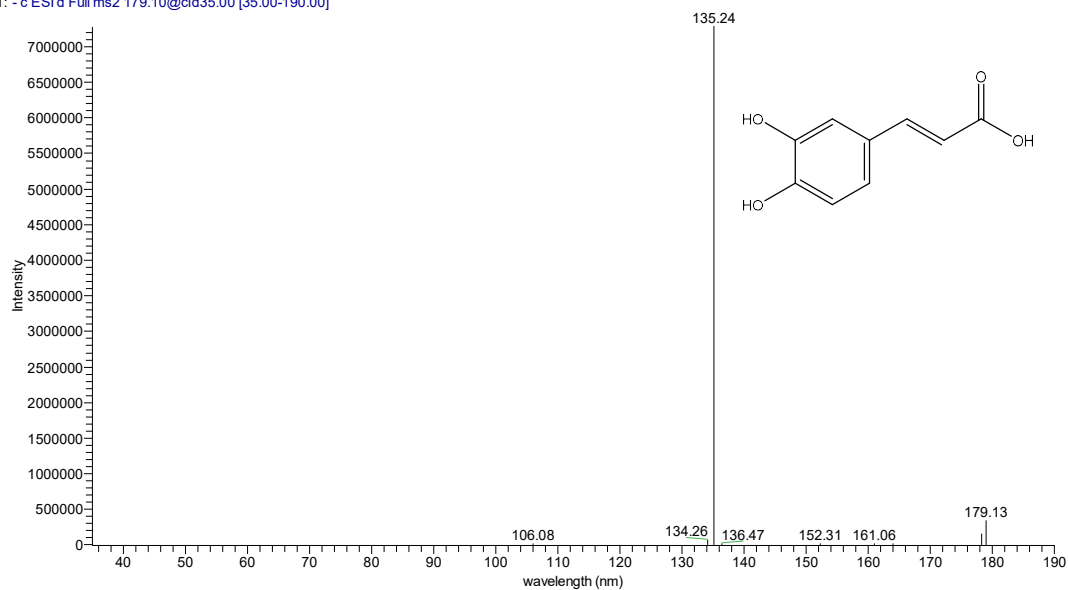


Figure S5. ESI-MS/MS spectrum of caffeic acid (**11**) [M-H]⁻ at *m/z* 179

Ery_neg #438 RT: 11.59 AV: 1 NL: 4.67E6
T: -c ESI d Full ms2 223.11@cid35.00 [50.00-235.00]

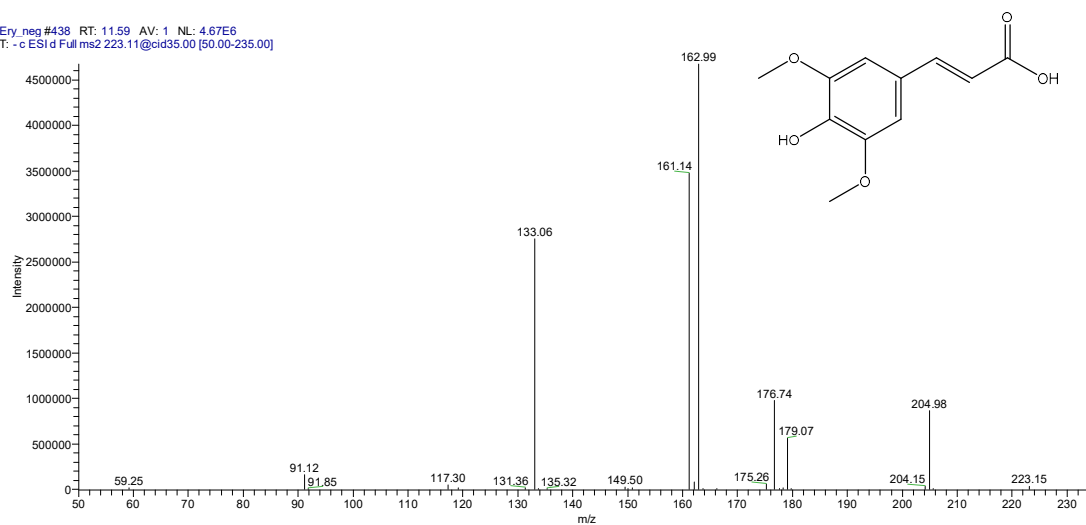


Figure S6. ESI-MS/MS spectrum of sinapic acid (**13**) [M-H]⁻ at *m/z* 223

Ery_neg #576 RT: 14.84 AV: 1 NL: 2.85E4
T: -c ESI'd Full ms2 593.06@cid35.00 [150.00-605.00]

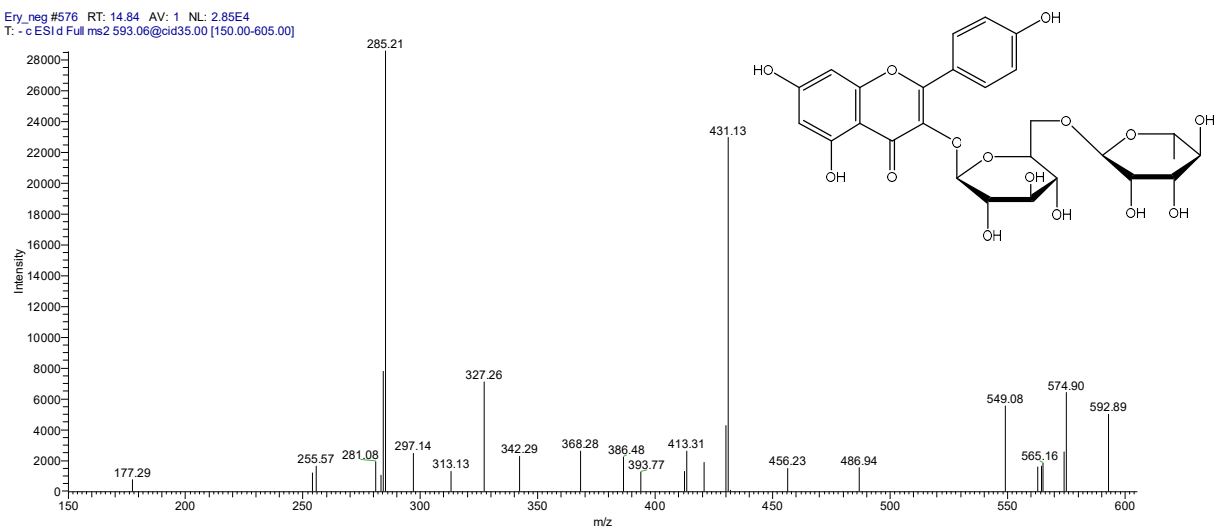


Figure S7. ESI-MS/MS spectrum of kaempferol-3-*O*-rutinoside (**18**) [M-H]⁻ at *m/z* 593

Ery_neg #564 RT: 14.56 AV: 1 NL: 3.62E6
T: -c ESI'd Full ms2 515.14@cid35.00 [130.00-530.00]

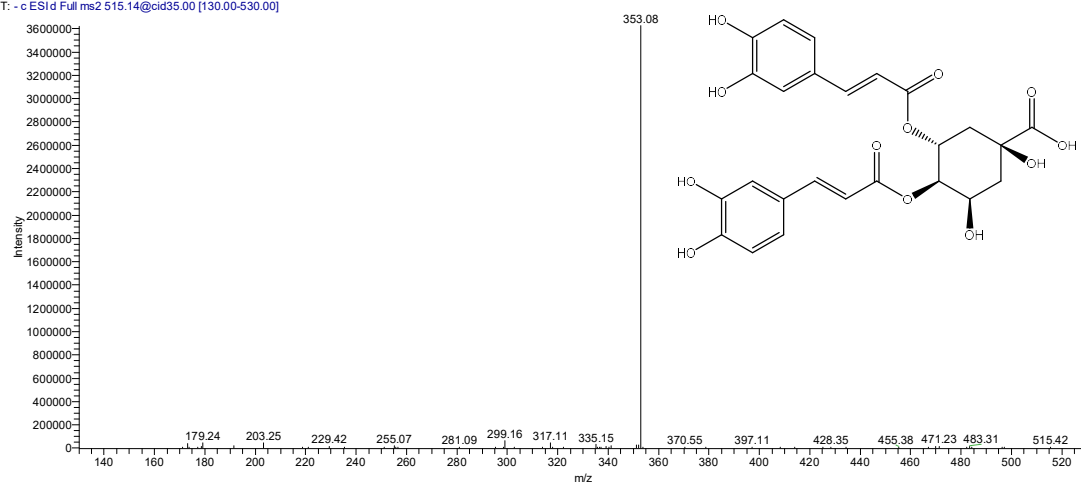


Figure S8. ESI-MS/MS spectrum of dicaffeoyl quinic acid (**19**) [M-H]⁻ at *m/z* 515

Ery_neg #592 RT: 15.23 AV: 1 NL: 7.09E6
T: -c ESI d Full ms2 609.33@cid35.00 [155.00-620.00]

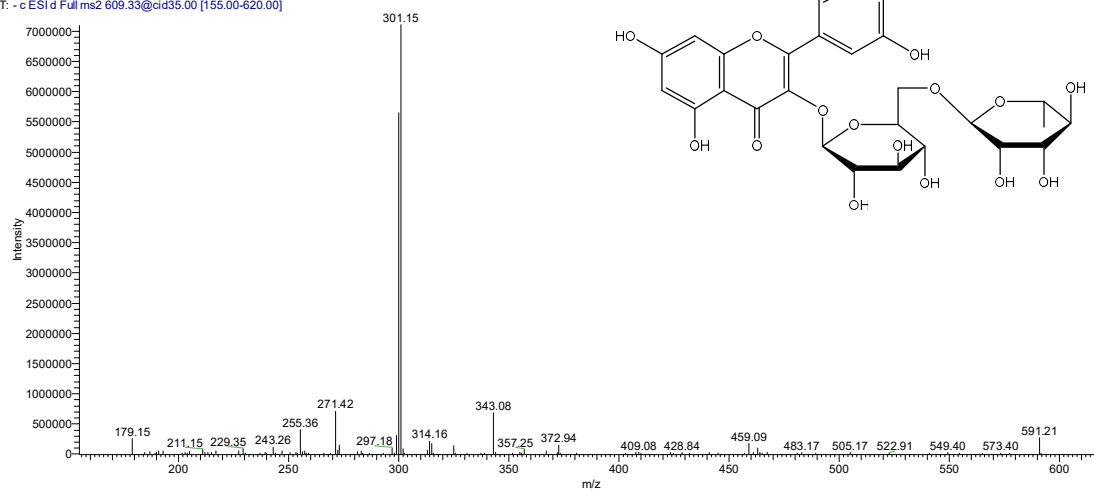


Figure S9. ESI-MS/MS spectrum of quercetin-3-*O*-rutinoside (**20**) [M-H]⁻ at *m/z* 609

Ery_neg #602 RT: 15.43 AV: 1 NL: 8.93E6
T: -c ESI d Full ms2 463.22@cid35.00 [115.00-475.00]

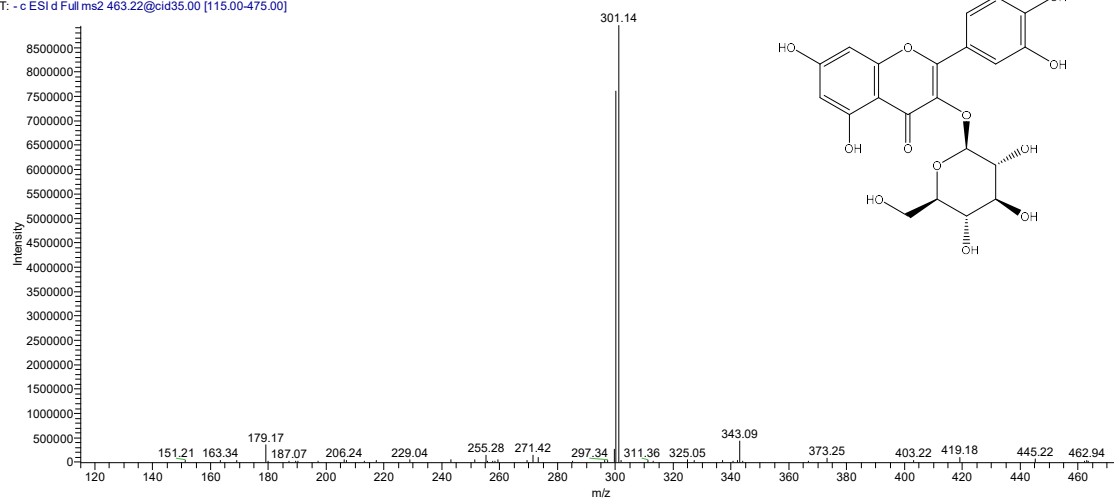


Figure S10. ESI-MS/MS spectrum of quercetin-3-*O*-hexoside (**21**) [M-H]⁻ at *m/z* 463

Ery_neg #648 RT: 16.52 AV: 1 NL: 9.69E6
T: -c ESI'd Full ms2 623.39@cid35.00 [160.00-635.00]

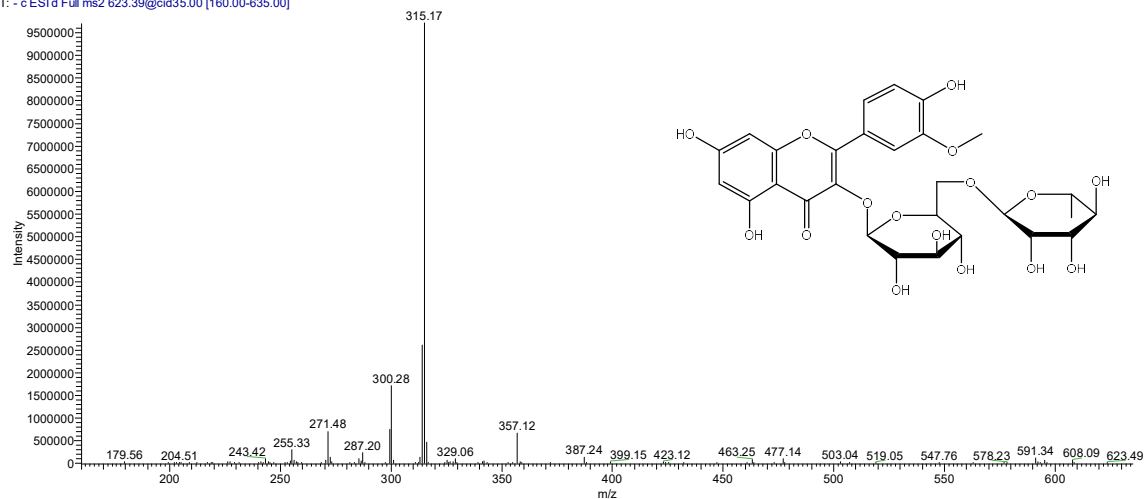


Figure S11. ESI-MS/MS spectrum of isorhamnetin-*O*-rutinoside (**22**) [M-H]⁻ at m/z 623

Ery_neg #676 RT: 17.20 AV: 1 NL: 7.91E6
T: -c ESI'd Full ms2 477.24@cid35.00 [120.00-490.00]

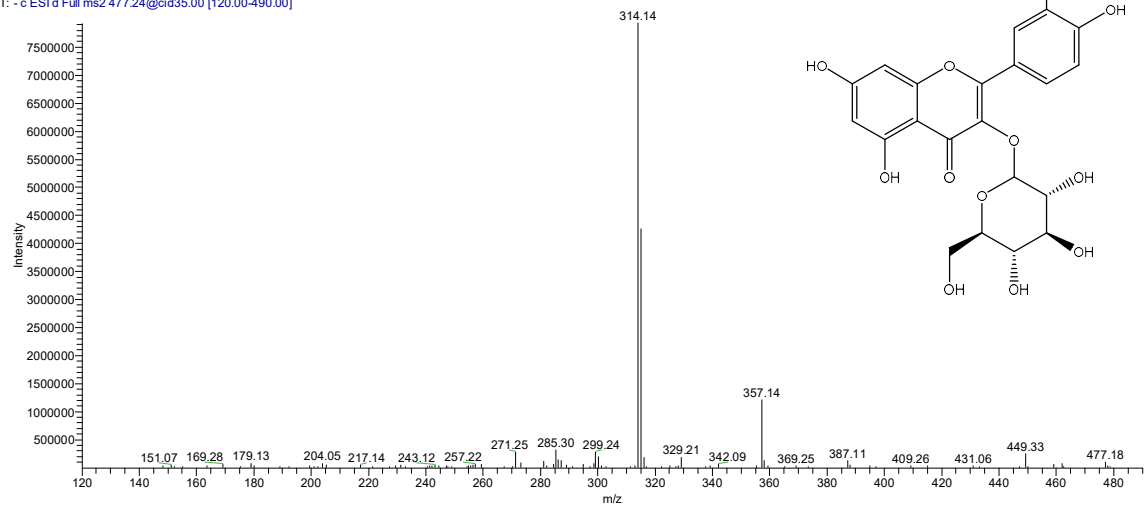


Figure S12. ESI-MS/MS spectrum of isorhamnetin-*O*-hexoside (**23**) [M-H]⁻ at m/z 477