

Figure S1. MSC preparation. A. Morphology of adherent ADMSCs. B. Differentiated adipocytes stained with Oil Red O. C. Differentiated chondrocytes stained with Alcian Blue. D. Differentiated osteocytes stained with Alizarin Red S. E–H. Identification of cellular markers of ADMSCs with flow cytometry.

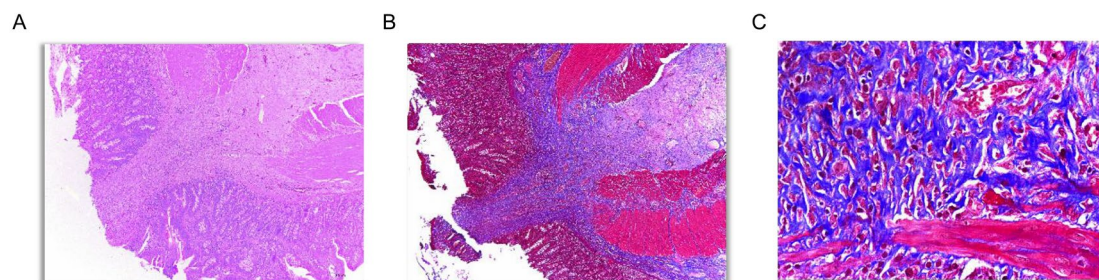


Figure S2. Morphology of an anastomotic site. A. H&E staining image of an anastomotic site (control group, 50 \times). B, C. Trichromatic staining images of an anastomotic site (control group, 50 \times and 400 \times , respectively).

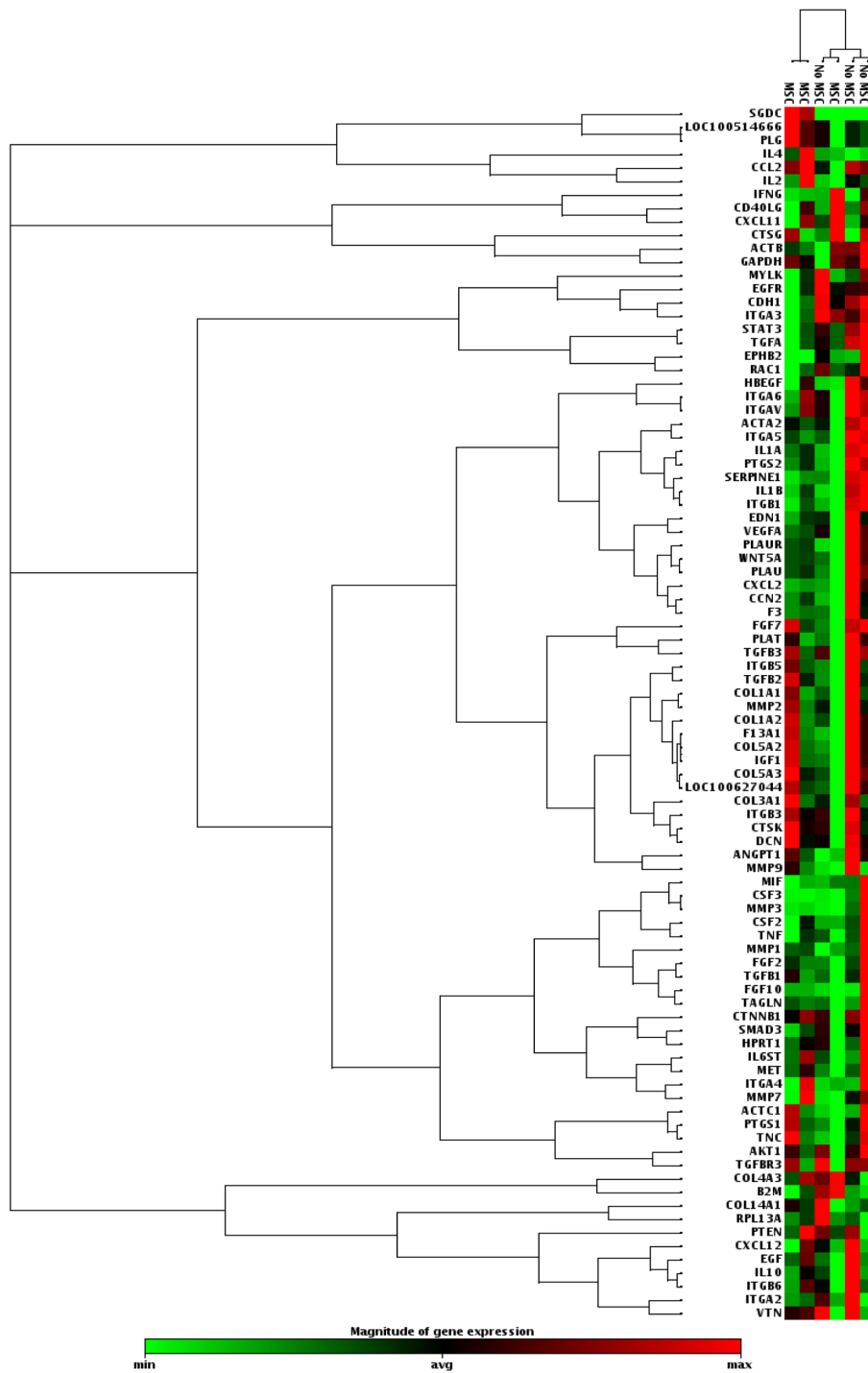


Figure S3. Expression of 84 genes related to intestinal wound healing in the MSC and control groups.

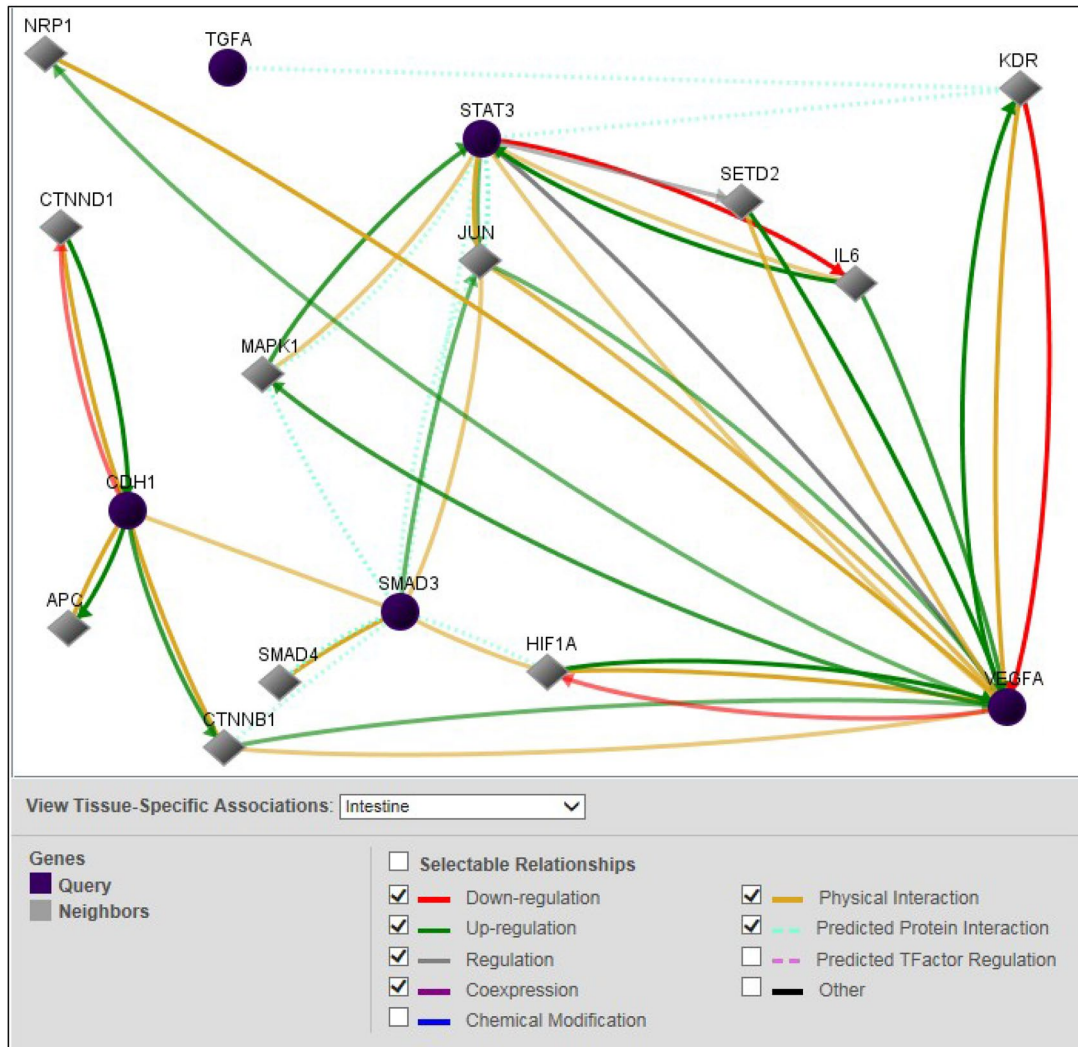


Figure S4. Potential signaling pathway network formed by five significantly downregulated genes.