

Figure S1. Association between stabilin-1 expression in TNM stage II-IV gastric cancer and cumulative patient survival. Kaplan-Meier analysis and a log rank test were used to compare patient survival with low and high numbers of intratumoral stabilin-1-positive cells. The cutoff value for determining stabilin-1 expression as low and high expression was 8.0 cells. The association between stabilin-1 expression with patient survival in (A) TNM stage II ( $P=0.52$ ), (B) TNM stage III ( $P=0.235$ ) and (C) TNM stage IV ( $P=0.63$ ) gastric cancer. TNM, Tumor-Stage-Metastasis.

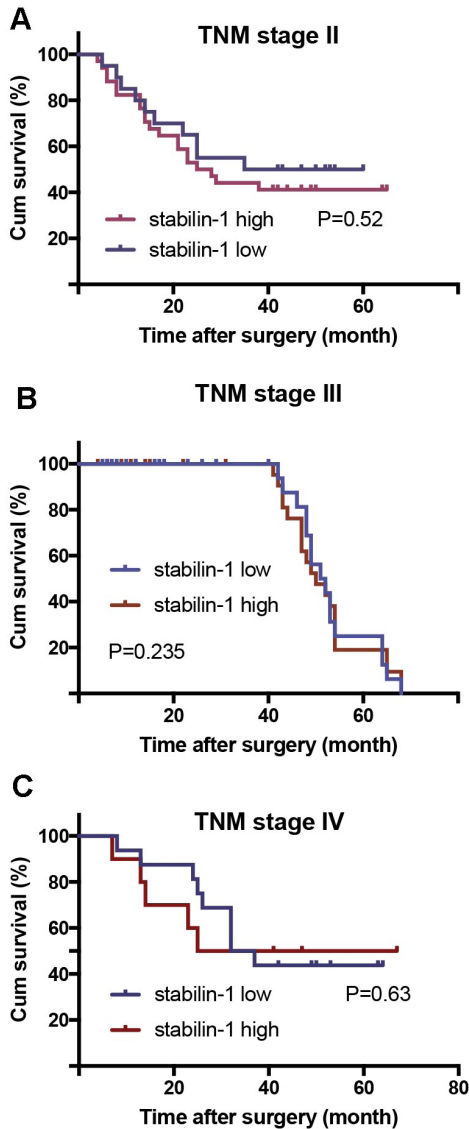


Table SI. Comparison of demographic and clinical information between gastric cancer tissue and non-cancerous gastric tissue.

Demographic and clinical information	Gastric cancer tissue, n	Non-cancerous gastric tissue, n	P-value
Age			0.024
≥60 years	210	18	
<60 years	121	22	
Sex			0.434
Male	246	32	
Female	85	8	
Smoking history			0.177
Yes	152	14	
No	162	24	
Alcohol intake			0.589
Yes	130	14	
No	184	24	
Family history of gastric cancer			0.863
Yes	36	4	
No	278	34	
Tumor size			0.056
<5 cm	154	25	
≥5 cm	177	15	
Tumor location			0.886
Cardia	179	20	
Corpora ventriculi	75	10	
Sinuses ventriculi	77	10	
Tumor differentiation			0.439
Poor	155	16	
Medium	92	15	
High	84	9	
Pathological type			0.151
Poorly differentiated adenocarcinoma	97	6	
Tubular papillary adenocarcinoma	165	23	
Signet ring cell and mucinous adenocarcinoma	69	11	
TNM stage			0.361
I	53	6	
II	101	15	
III	133	11	
IV	44	8	
Cancer embolus			0.747
Yes	65	7	
No	266	33	
Lymph node metastasis			0.535
Yes	207	23	
No	124	17	
Remote metastasis			0.248
M0	287	32	
M1	44	8	
T stage			0.865
T1	29	2	
T2	38	5	
T3	154	20	
T4	110	13	
N stage			0.550
N0	124	17	
N1	78	8	
N2	63	10	
N3	66	5	

TNM, Tumor-Node-Metastasis. A  $\chi^2$  test was used to analyze significant difference.

Table SII. Comparison of demographic and clinical information between 169 patients in the follow-up group and 202 patients in lost-to-follow-up group.

Demographic and clinical information	Follow-up group (n)	Lost to follow-up group (n)	P-value
Age			0.81
≥60 years	105	123	
<60 years	64	79	
Sex			0.69
Male	125	153	
Female	44	49	
Smoking history			0.58
Yes	73	93	
No	91	95	
Alcohol intake			0.93
Yes	66	78	
No	98	110	
Family history of gastric cancer			0.008
Yes	11	29	
No	153	159	
Tumor size			0.76
<5 cm	83	96	
≥5 cm	86	106	
Tumor location			0.77
Cardia	90	109	
Corpora ventriculi	40	45	
Sinuses ventriculi	39	48	
Tumor differentiation			0.29
Poor	81	90	
Medium	42	65	
High	46	47	
Pathological type			0.17
Poorly differentiated adenocarcinoma	53	50	
Tubular papillary adenocarcinoma	86	102	
Signet ring cell and mucinous adenocarcinoma	30	50	
TNM stage			0.86
I	25	34	
II	54	62	
III	64	80	
IV	26	26	
Cancer embolus			0.32
Yes	29	43	
No	140	159	
Lymph node metastasis			0.42
Yes	101	129	
No	68	73	
Remote metastasis			0.32
M0	142	177	
M1	27	25	
T stage			0.78
T1	14	17	
T2	17	26	
T3	78	96	
T4	60	63	
N stage			0.30
N0	68	73	
N1	31	55	
N2	34	39	
N3	35	36	

TNM, Tumor-Node-Metastasis. A  $\chi^2$  test was used to analyze the differences.

Table SIII. Associations between clinicopathological features and the number of CD68<sup>+</sup> cells in primary gastric adenocarcinoma.

Clinicopathological features	Cases, n	CD68 <sup>+</sup> cells, median (interquartile range)	P-value
Sex			0.176
Male	278	17.0 (11.0-26.4)	
Female	93	15.0 (9.1-23.5)	
Age			0.374
<60 years	143	17.4 (11.6-28.2)	
≥60 years	228	15.7 (10.4-23.6)	
Diameter			0.869
<5 cm	179	16.4 (10.9-25.8)	
≥5 cm	192	16.2 (10.4-25.0)	
Tumor location			0.676
Cardia	199	15.6 (10-26.4)	
Corpora ventriculi	85	17.0 (10.0-26.4)	
Sinuses ventriculi	87	17.4 (11.2-26.8)	
Differentiation degree			0.002
Poor	171	19.2 (12.4-28.2)	
Medium	107	16.8 (10.4-27.0)	
Well	93	13.0 (10.0-19.9)	
Pathological type			0.247
Poorly differentiated adenocarcinoma	103	18.4 (9.8-32.4)	
Tubular papillary adenocarcinoma	188	15.6 (10.9-23.9)	
Signet ring cell and mucinous adenocarcinoma	80	17.2 (10.6-23.9)	
Cancer embolus			0.693
Negative	299	17.0 (10.4-25.2)	
Positive	72	15.1 (10.5-27.3)	
Nodal metastasis			0.264
No	141	17.8 (11.6-26.0)	
Yes	230	15.7 (10.0-25.3)	
Serosa invasion			0.171
No	74	19.0 (12.3-26.5)	
Yes	297	15.7 (10.3-24.4)	
T stages			0.604
T1	31	20.4 (10.2-28.2)	
T2	43	19.0 (12.6-24.6)	
T3	174	15.6 (10.0-26.9)	
T4	123	15.8 (10.8-24.2)	
N stages			0.543
N0	141	17.8 (11.6-26.0)	
N1	86	16.8 (10.8-28.4)	
N2	73	15.8 (9.9-24.1)	
N3	71	14.4 (10.4-22.6)	
Distant metastasis			0.237
M0	319	16.5 (11.0-26.3)	
M1	52	15.4 (9.1-22.3)	
TNM stage			0.431
I	59	19.6 (11.6-27.2)	
II	116	17.5 (10.6-27.0)	
III	144	15.6 (10.9-25.2)	
IV	52	16.0 (9.0-22.4)	
Smoking			0.981
No	186	16.0 (9.9-26.9)	
Yes	166	16.1 (10.7-23.3)	
Alcohol consumption			0.543
No	208	15.8 (10.0-25.5)	
Yes	144	16.6 (11.0-24.9)	
Family history			0.343
No	312	16.7 (10.5-26.2)	
Yes	40	14.7 (9.3-24.6)	

TNM, Tumor-Node-Metastasis. Mann-Whitney U test or Kruskal-Wallis test was used to compare the differences.