

Fig. 3E. E-cadherin



Fig. 3E N-cadherin



Fig. 3E N-cadherin overexposure



Fig. 3E Vimentin

L



Fig. 3E β -actin



Fig. 3F E-cadherin

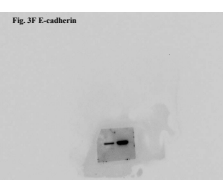


Fig. 3F N-cadherin



Fig. 3F Vimentin



Fig. 3F β -actin



Supplementary Fig.1E E-cadherin



Supplementary Fig.1E N-cadherin



Supplementary Fig.1E N-cadherin overexpression



Supplementary Fig.1E Vimentin



Supplementary Fig.1E β -actin



Supplementary Fig.1F E-cadherin



Supplementary Fig.1F N-cadherin



Supplementary Fig.1F N-cadherin overexpression



Supplementary Fig.1F Vimentin



Western blot analysis showing Vimentin protein levels. The image displays a single horizontal band of Vimentin protein. The band is significantly darker and thicker on the left side of the blot, indicating a high concentration of Vimentin. On the right side, the band is very faint and thin, indicating a low concentration of Vimentin. The background of the blot is light gray, and the bands are dark gray/black.

Supplementary Fig.1F Vimentin overexposure



Supplementary Fig.1F β -actin

