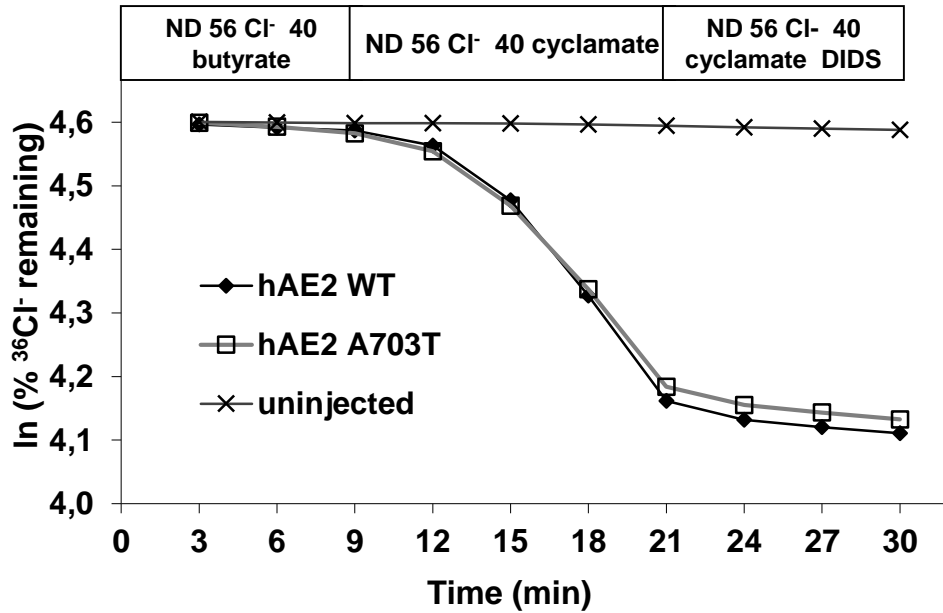
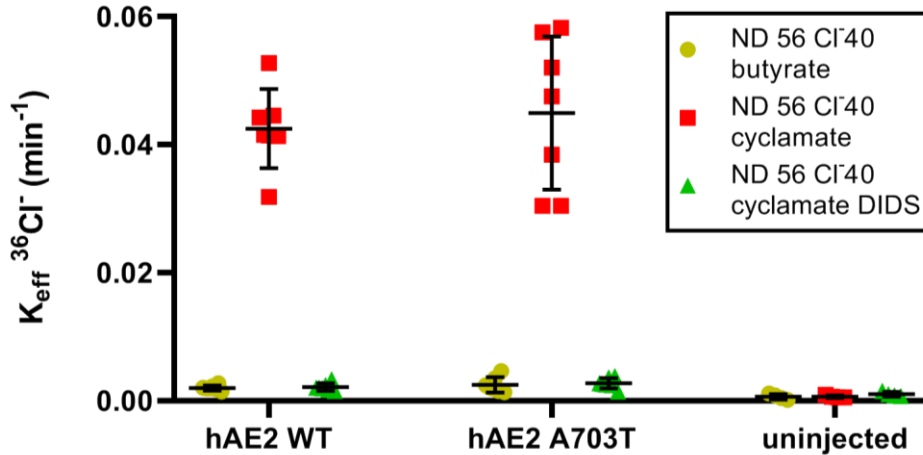


A**B**

Supplementary Figure S7. Indistinguishable inhibition by acid intracellular pH exhibited by hAE2 and variant A703T.

(A) ³⁶Cl⁻ efflux traces from representative individual oocytes expressing 2 ng hAE2 or hAE2 A703T cRNA, or from an uninjected oocyte, during sequential exposure to baths containing 56 mM NaCl plus 40 mM sodium butyrate in the initial bath and 40 mM sodium cyclamate in the second bath, followed by addition of DIDS. Oocytes were pre-incubated in Cl⁻ free bath containing 40 mM sodium butyrate for 30 min prior to initiating efflux experiments. (B) ³⁶Cl⁻ efflux rate constants of hAE2 or hAE2 A703T in the three bath conditions of panel A. Means ± S.E.M. for (n) oocytes.