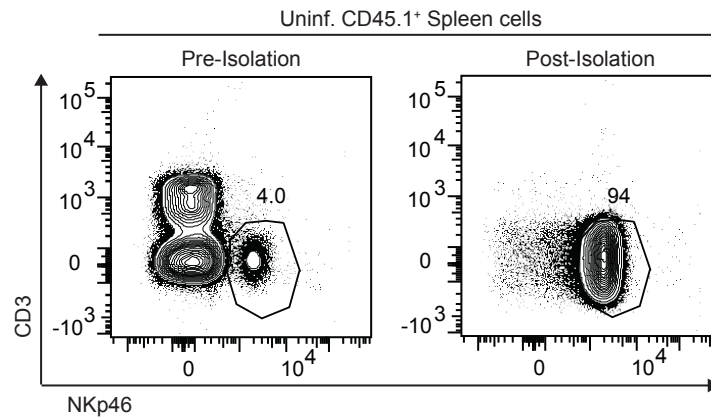


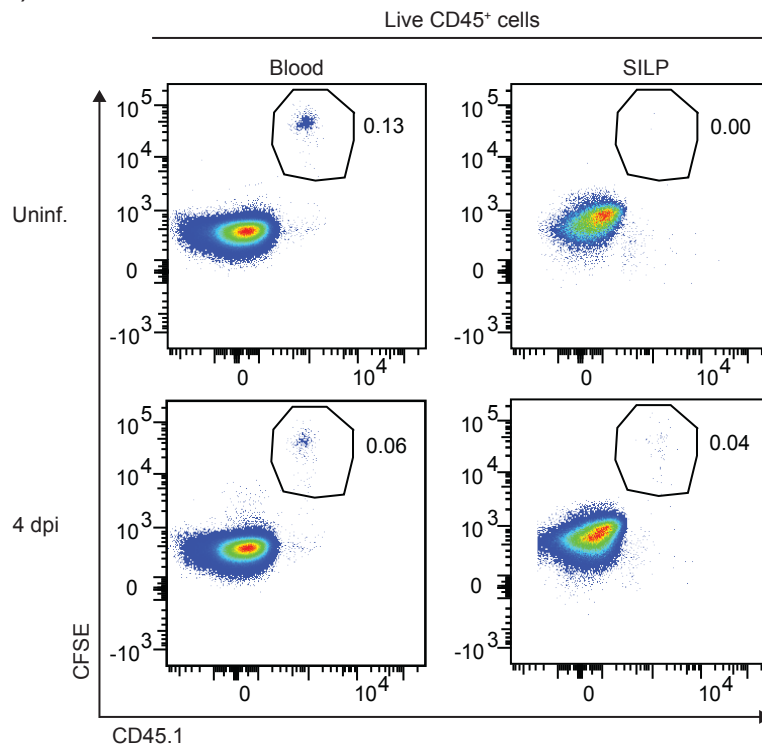
IL-4 producing GATA-3⁺ Th2 cells are first detectable at day 6 in the SILP during *Hpb* infection.

A) Representative contour plots and **B)** total number of CD45⁺B220⁺CD3⁺CD4⁺GATA-3⁺huCD2⁺ T cells in the SILP of uninfected and *Hpb*-infected 4get/KN2 mice at the indicated time points. huCD2 is the reporter for IL-4⁺ secreting cells. **B)** Data pooled from two independent experiments and analysed by one-way ANOVA with Dunnet's post-test for multiple comparisons, using uninfected as the control group (***) $p < 0.001$). Each dot represents an individual mouse.

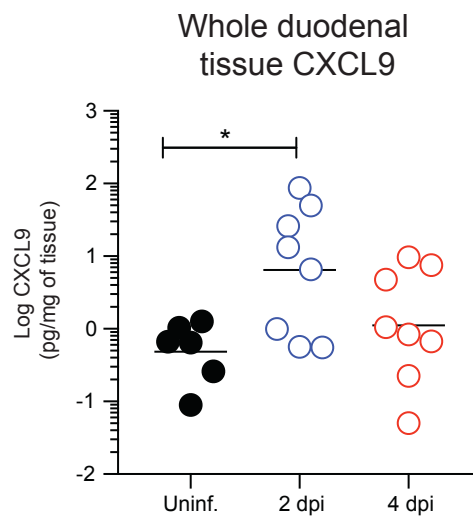
A)



B)

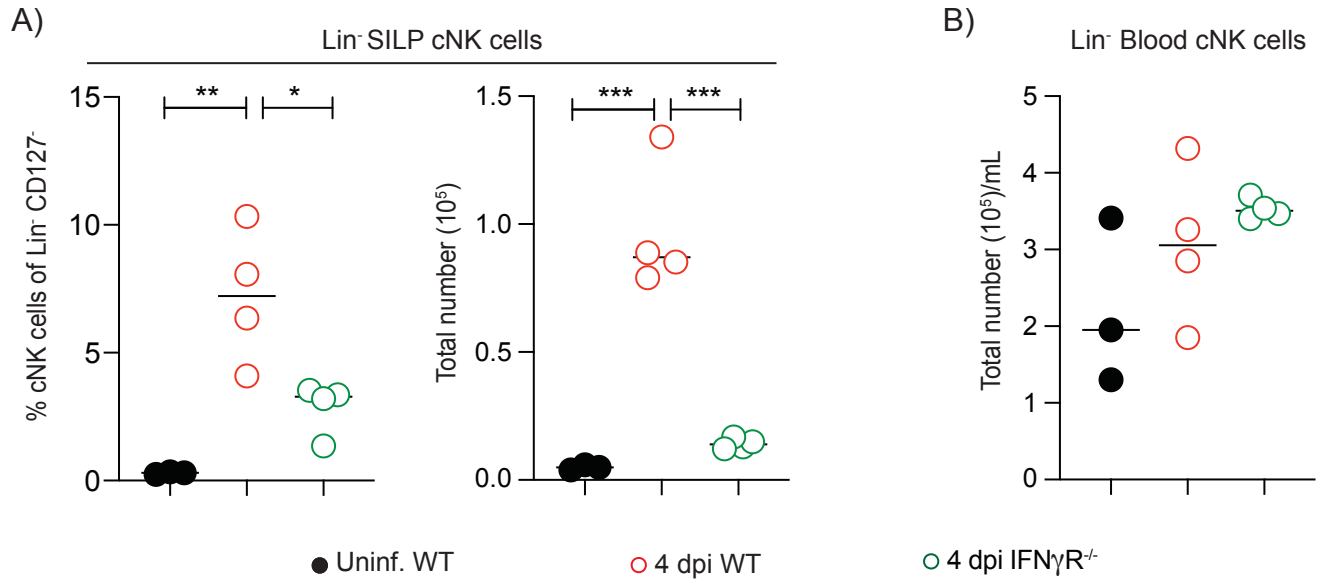


Purity and detection of CFSE⁺ NK cells. Purified CD45.1⁺ splenic NK cells were transferred into CD45.2⁺ recipient mice. **A)** Contour plots of (CD3⁺NKp46⁺) NK cell frequency pre-and post-isolation. **B)** Representative pseudocolor plots of CFSE-labelled CD45.1⁺ cells in the blood and SILP of uninfected and 4 days *Hpb*-infected CD45.2⁺ mice.



CXCL9 protein is increased in the small intestine during *Hpb* infection. Total CXCL9 protein measured from whole duodenal tissue homogenates from uninfected mice, or 2 and 4 day *Hpb*-infected mice. Data pooled from two independent experiments and analysed by one-way ANOVA with Dunnet's post-test for multiple comparisons, using uninfected as the control group (* $p < 0.05$). Each dot represents an individual mouse.

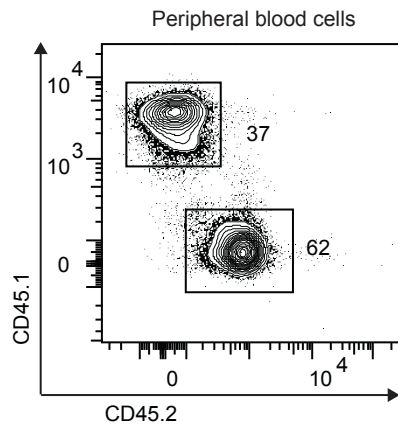
Co-housed mice



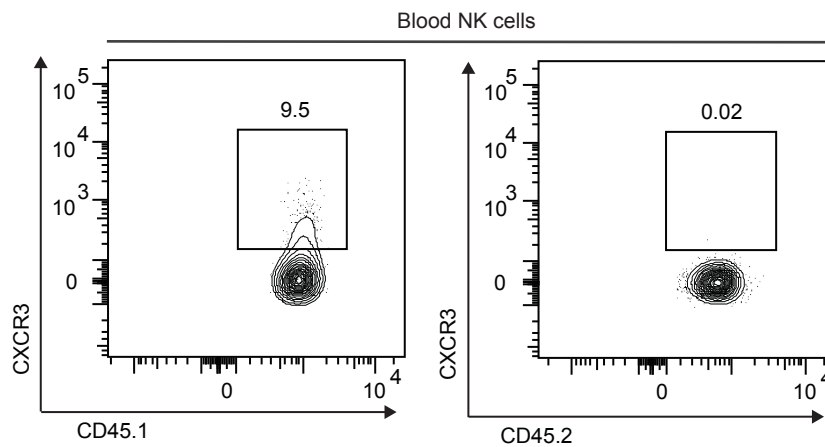
Co-housing does not impact the requirement for IFN γ signaling in cNK cell recruitment to the SILP during *Hpb* infection. A) Frequencies and total numbers of cNK cells in the SILP of uninfected WT, 4 dpi WT and IFN γ R^{-/-} mice after a 4 week co-housing period. **B)** Total numbers of cNK cells per mL of blood in uninfected WT, 4 dpi WT and IFN γ R^{-/-} co-housed mice. Data was analysed by one-way ANOVA with Tukey's post-test for multiple comparisons (*p < 0.05, **p < 0.001, ***p < 0.001). Each dot represents an individual mouse.

Supplementary Figure 5

A)



B)



Quality controls for the CXCR3 mixed bone marrow chimera experiments. A) Representative contour plots of the frequency of WT (CD45.1⁺) and CXCR3^{-/-} (CD45.2⁺) cells in the blood prior to infection of the chimeric mice 12 weeks after BM transplantation. **B)** Representative contour plots of CXCR3 expression by CD127⁻NK1.1⁺ NK cells in the blood of uninfected chimeric mice.