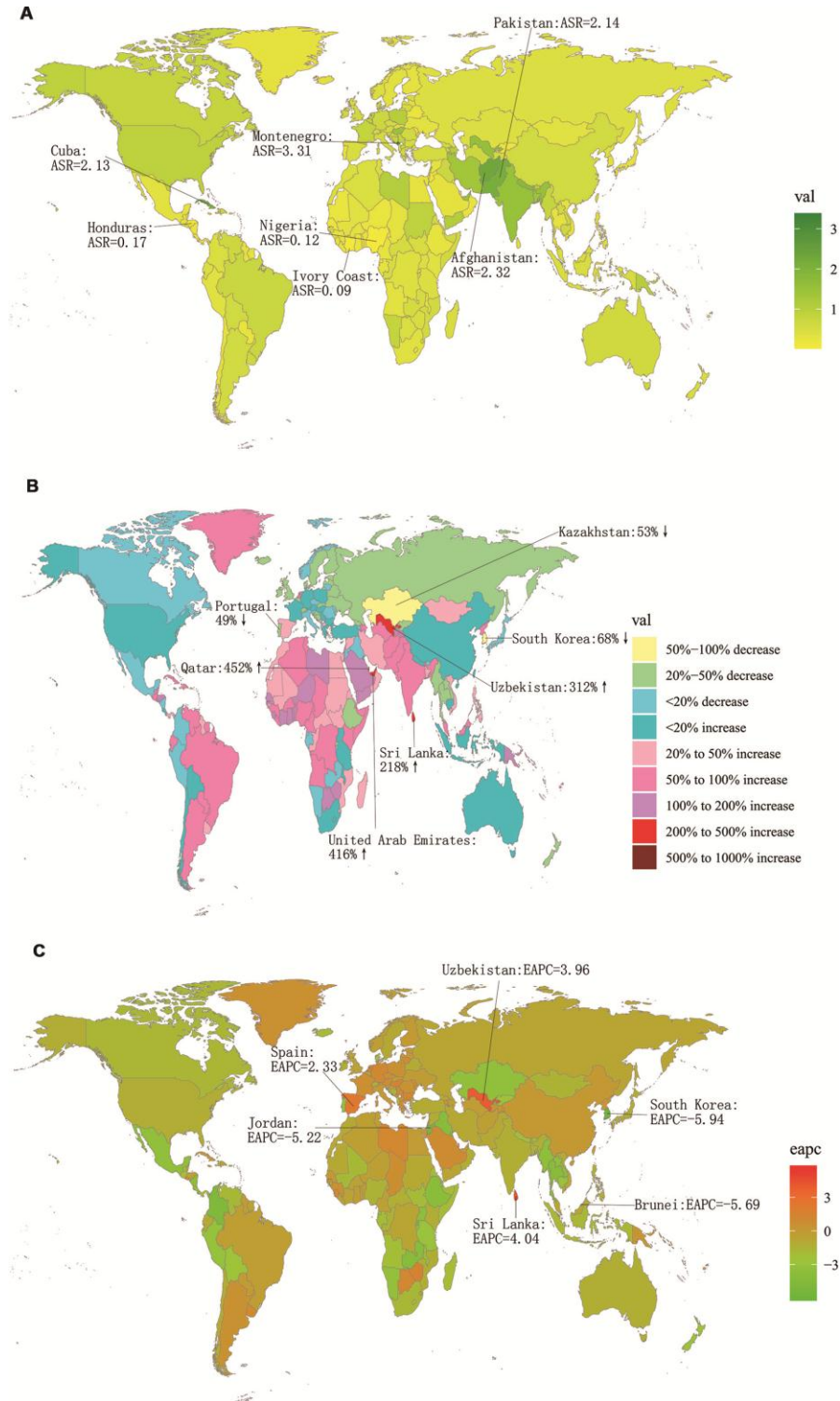
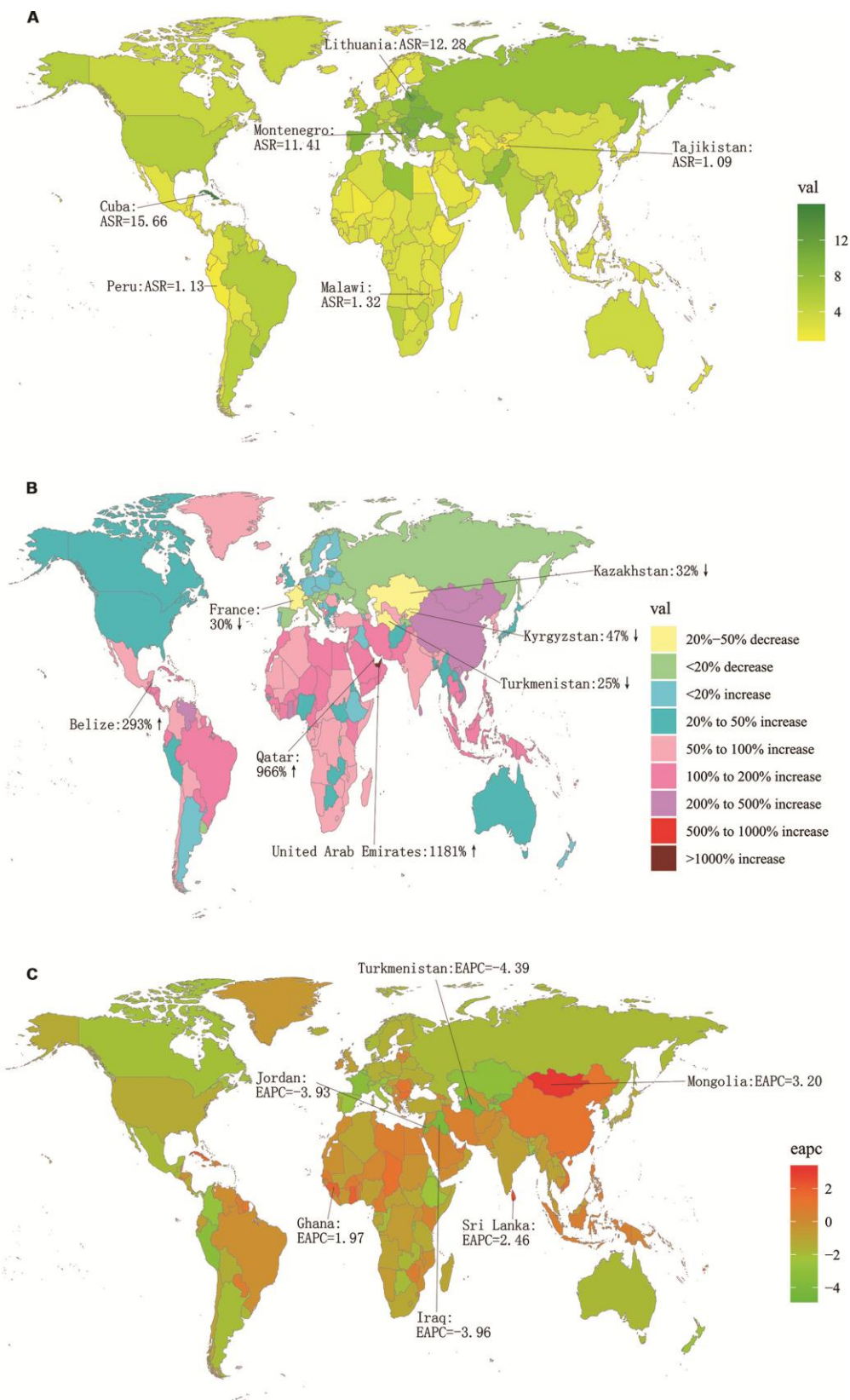


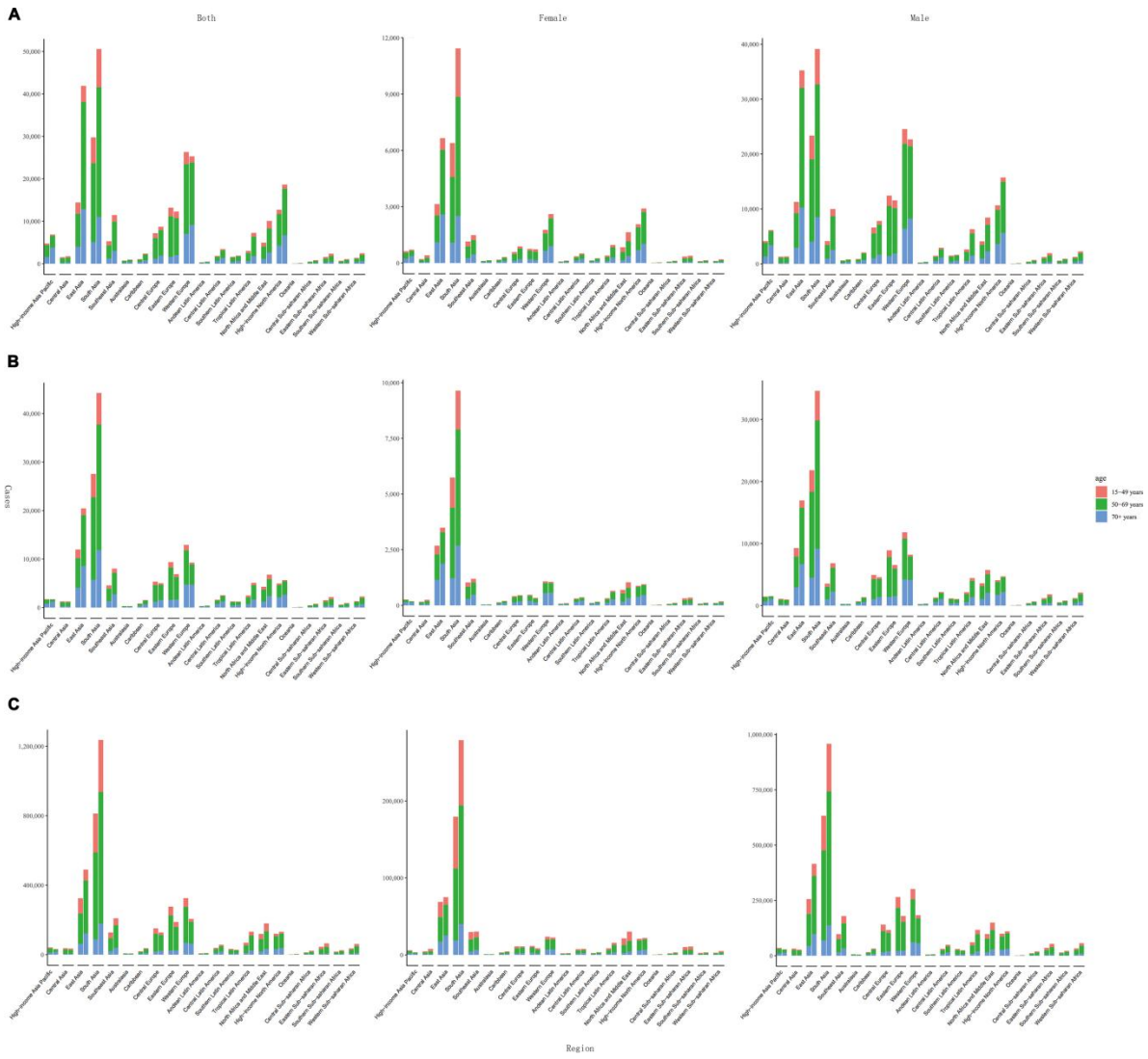
SUPPLEMENTARY FIGURES



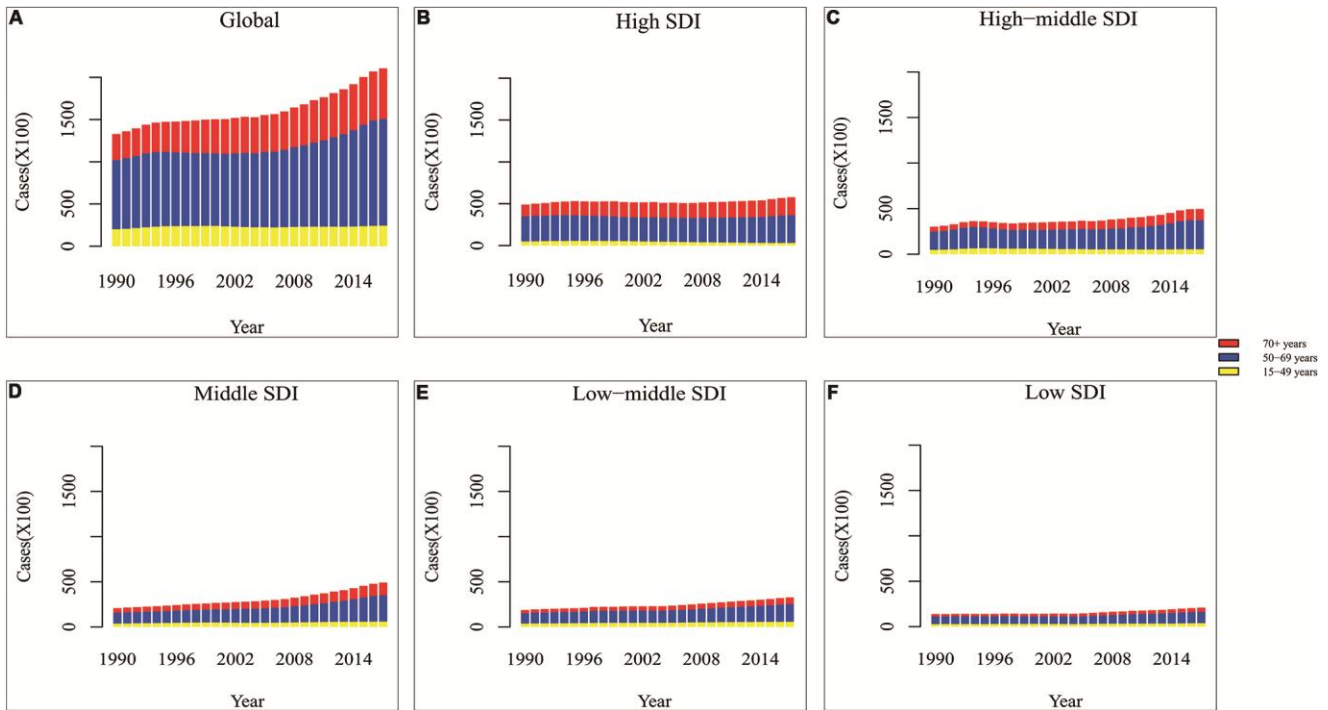
**Supplementary Figure 1. The global incidence burden of larynx cancer among female in 195 countries. (A)** The ASIR of larynx cancer in 2017; **(B)** The relative change in incidences of larynx cancer between 1990 and 2017; **(C)** The EAPC of larynx cancer ASIR from 1990 to 2017. Countries with an extreme number of cases/evolution were annotated. ASIR, age-standardized incidence rate; EAPC, estimated annual percentage change.



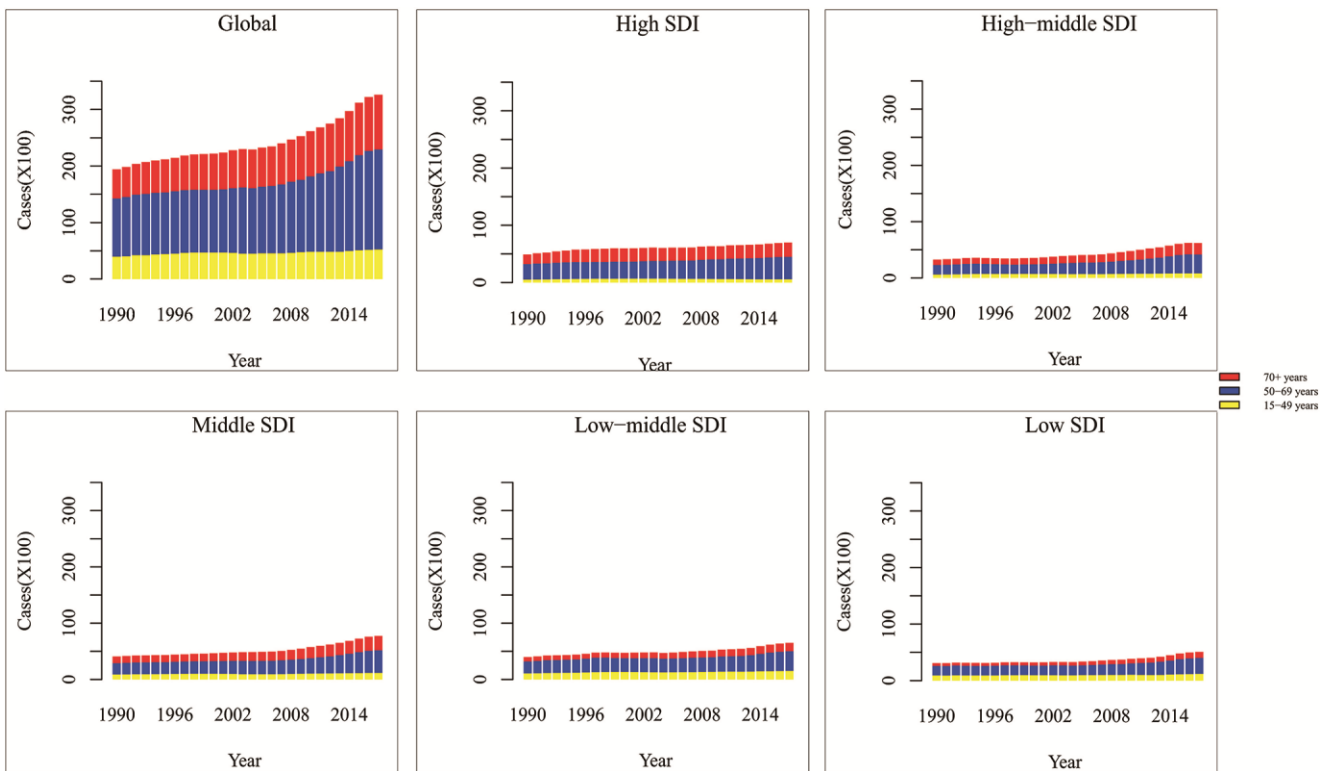
**Supplementary Figure 2. The global incidence burden of larynx cancer among male in 195 countries.** (A) The ASIR of larynx cancer in 2017; (B) The relative change in incidences of larynx cancer between 1990 and 2017; (C) The EAPC of larynx cancer ASIR from 1990 to 2017. Countries with an extreme number of cases/evolution were annotated. ASIR, age-standardized incidence rate; EAPC, estimated annual percentage change.



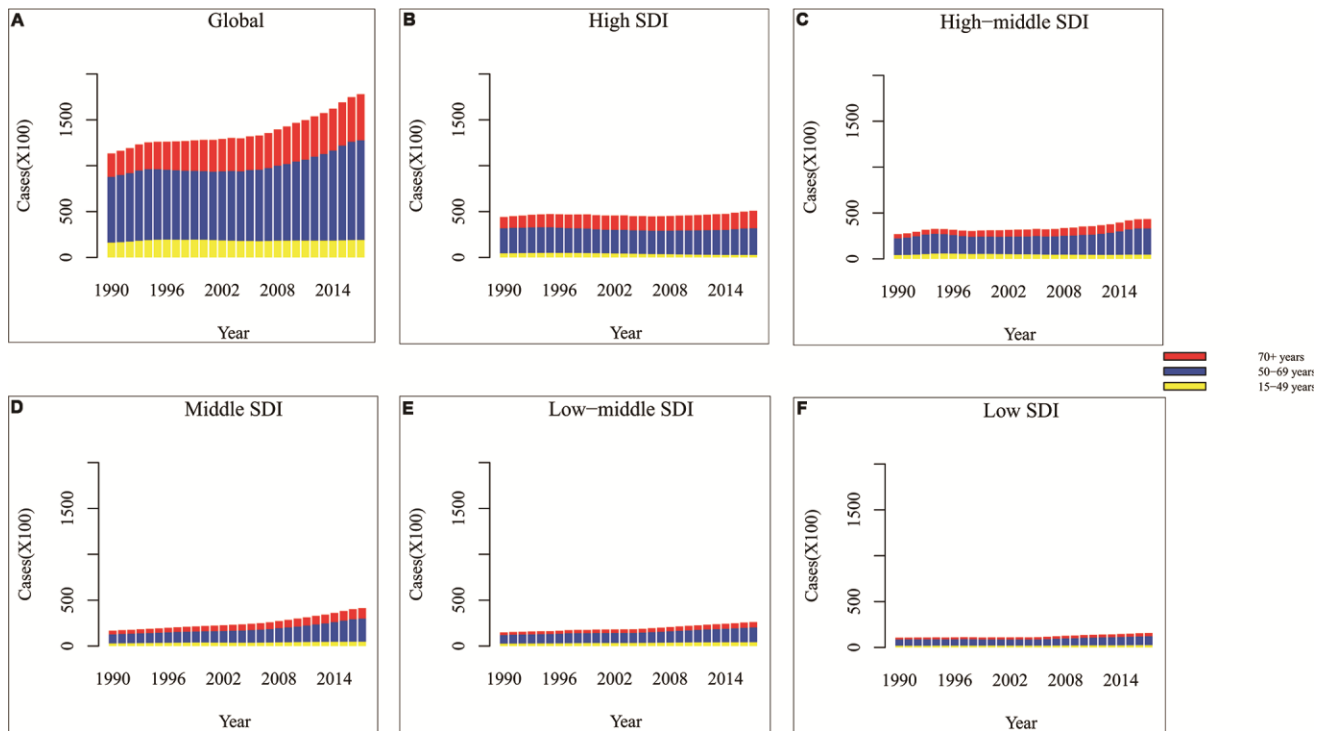
**Supplementary Figure 3. The cases of larynx cancer at a regional level by sex and age.** The left column in each group is case data in 1990 and the right column in 2017. (A) The cases of incidence; (B) The cases of death; (C) The number of DALYs. DALY: disability adjusted life-year. SDI, socio-demographic index.



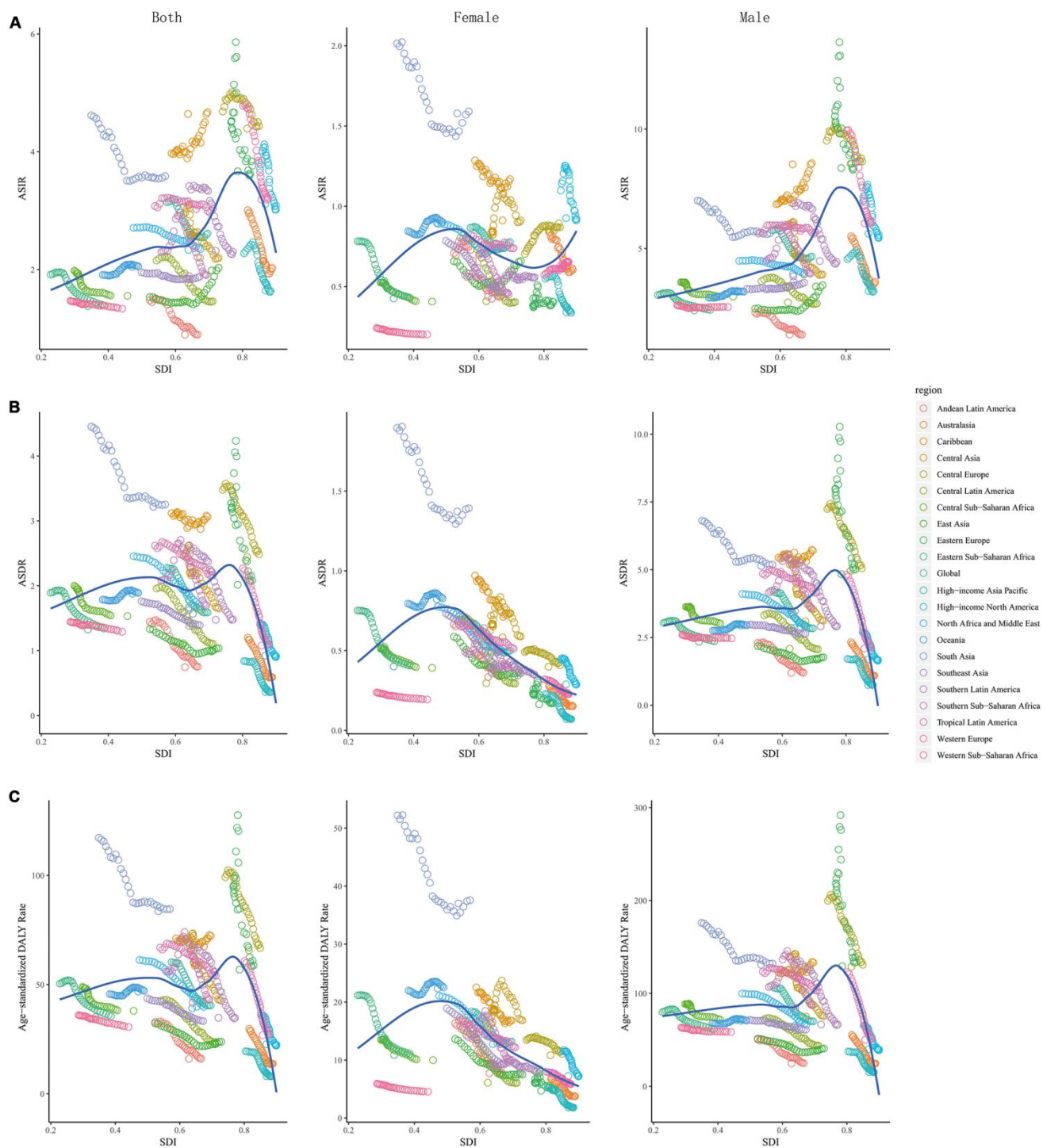
**Supplementary Figure 4. Incident cases of larynx cancer among 28 years, three age groups and different SDI quantiles.** (A)Global; (B) High SDI; (C) High-middle SDI; (D) Middle SDI; (E) Low-middle SDI; (F) Low SDI. SDI, socio-demographic index.



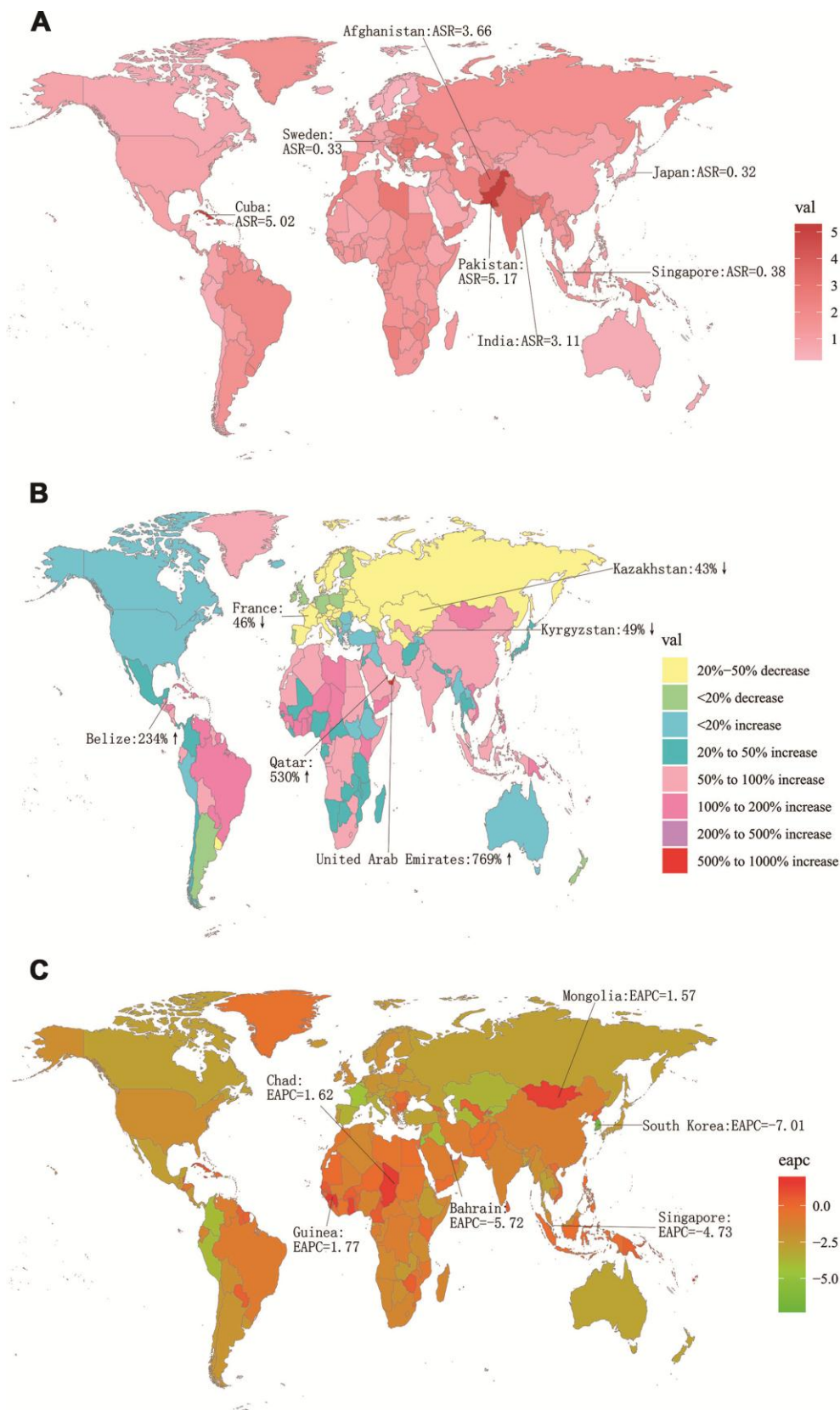
**Supplementary Figure 5. Incident cases of larynx cancer among 28 years, three age groups and different SDI quantiles for female.** (A)Global; (B) High SDI; (C) High-middle SDI; (D) Middle SDI; (E) Low-middle SDI; (F) Low SDI. SDI, socio-demographic index.



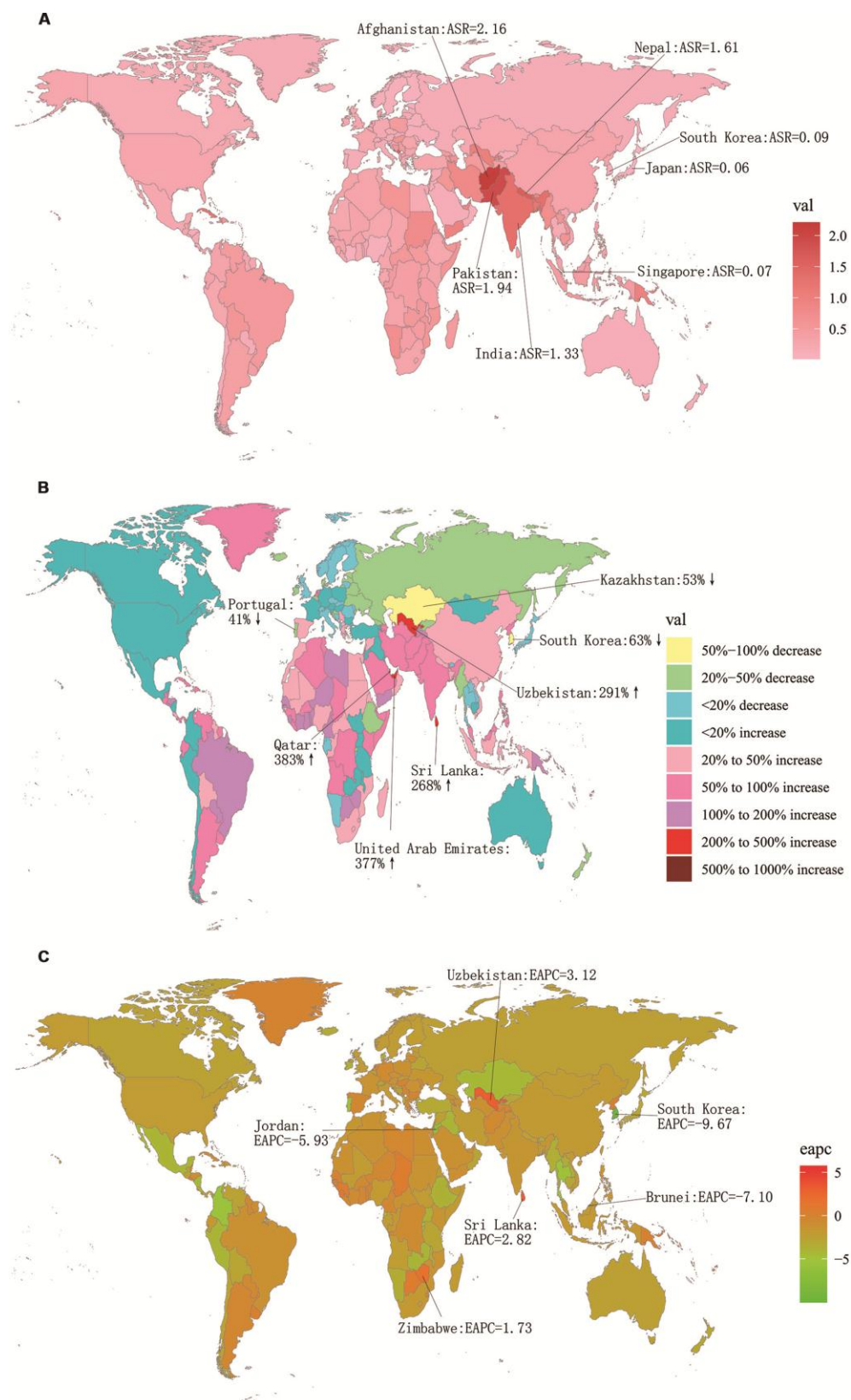
**Supplementary Figure 6. Incident cases of larynx cancer among 28 years, three age groups and different SDI quantiles for male.** (A)Global; (B) High SDI; (C) High-middle SDI; (D) Middle SDI; (E) Low-middle SDI; (F) Low SDI. SDI, socio-demographic index.



**Supplementary Figure 7. The association between ASR of 28 years and SDI among 21 regions. (A)** ASIR: age standardized incidence rate; **(B)** ASDR: age standardized death rate; **(C)** age-standardized DALY rate. DALY: disability adjusted life-year.

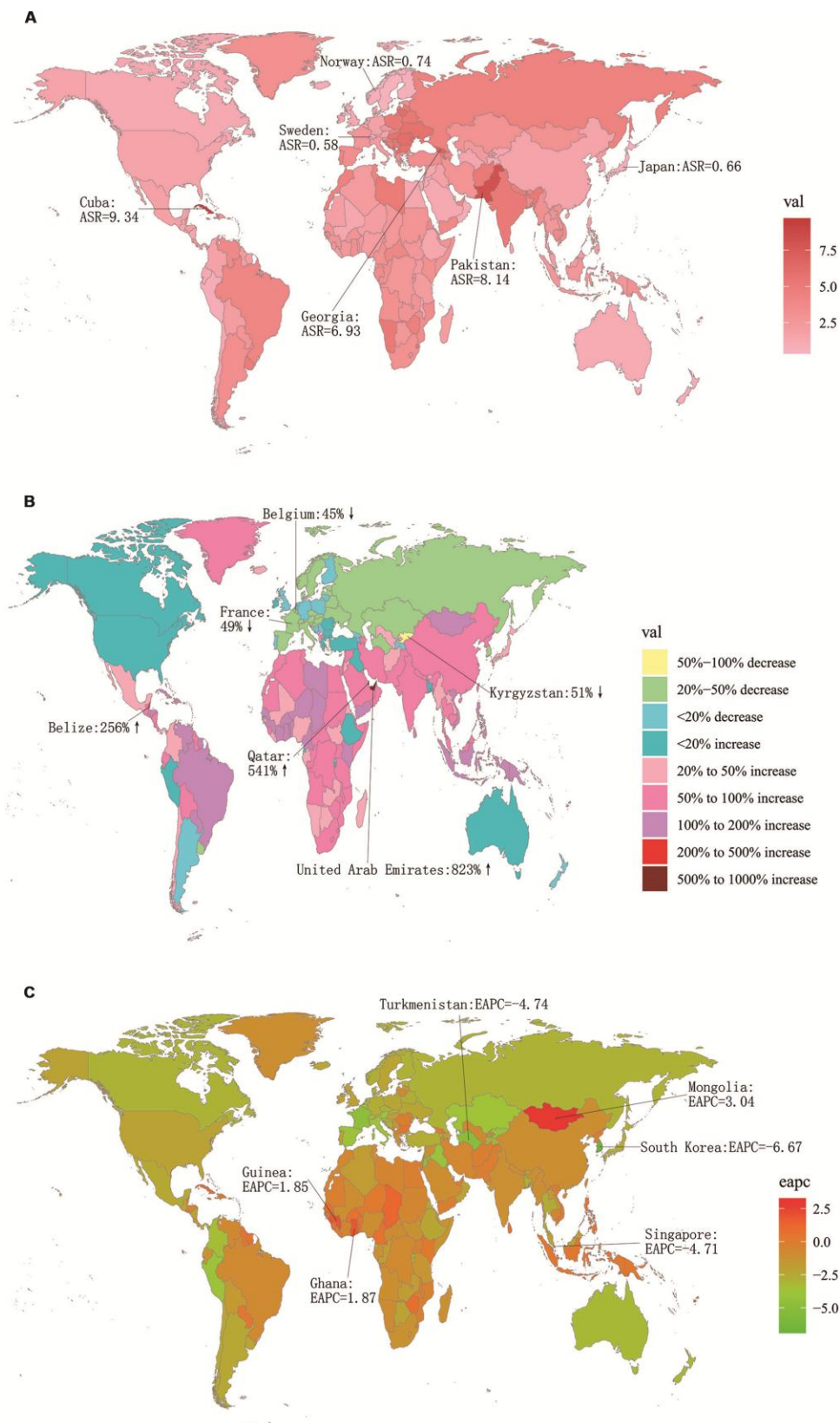


**Supplementary Figure 8. The global death burden of larynx cancer in 195 countries. (A)** The ASDR of larynx cancer in 2017; **(B)** The relative change in deaths of larynx cancer between 1990 and 2017; **(C)** The EAPC of larynx cancer ASDR from 1990 to 2017. Countries with an extreme number of cases/evolution were annotated. ASDR, age-standardized death rate; EAPC, estimated annual percentage change.

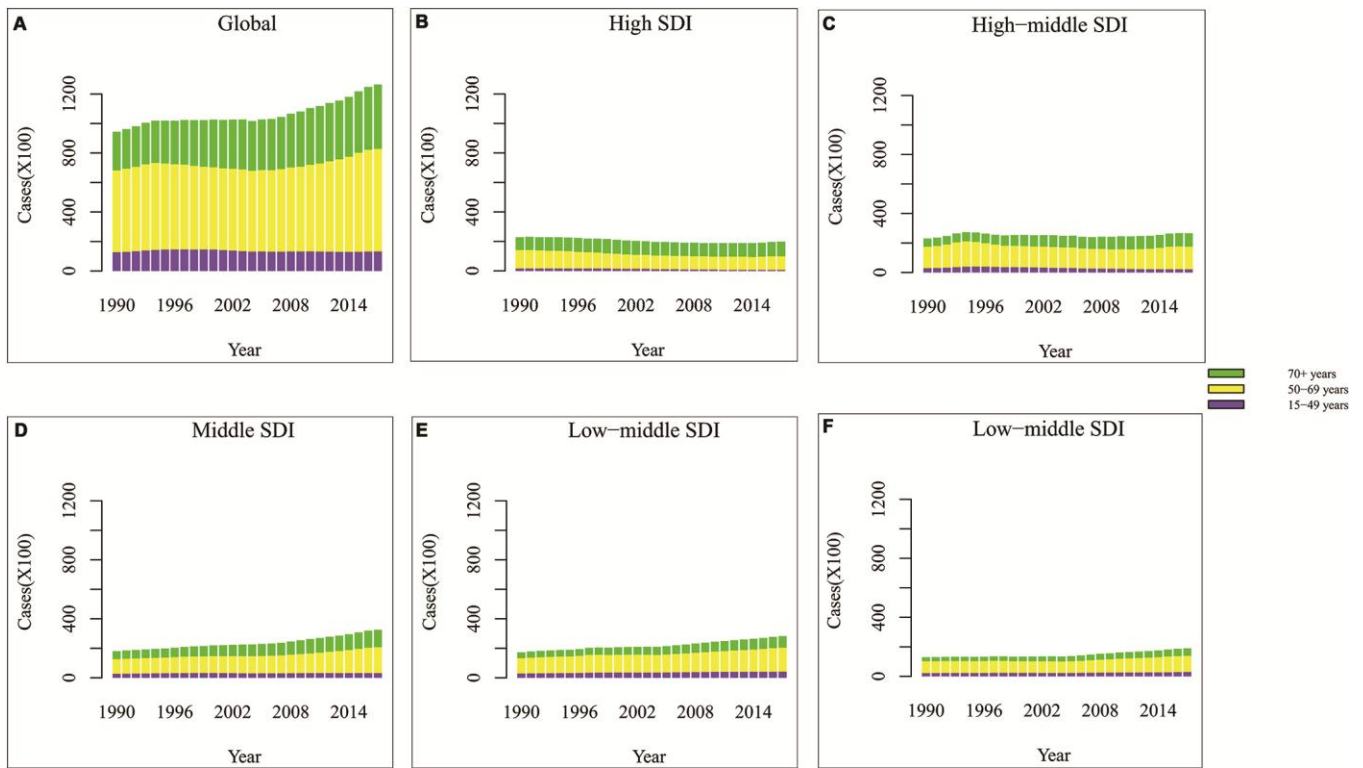


**Supplementary Figure 9. The global death burden of larynx cancer among female in 195 countries.** (A) The ASDR of larynx cancer in 2017; (B) The relative change in deaths of larynx cancer between 1990 and 2017; (C) The EAPC of larynx cancer ASDR from 1990 to 2017. Countries with an extreme number of cases/evolution were annotated. ASDR, age-standardized death rate; EAPC, estimated annual percentage change.

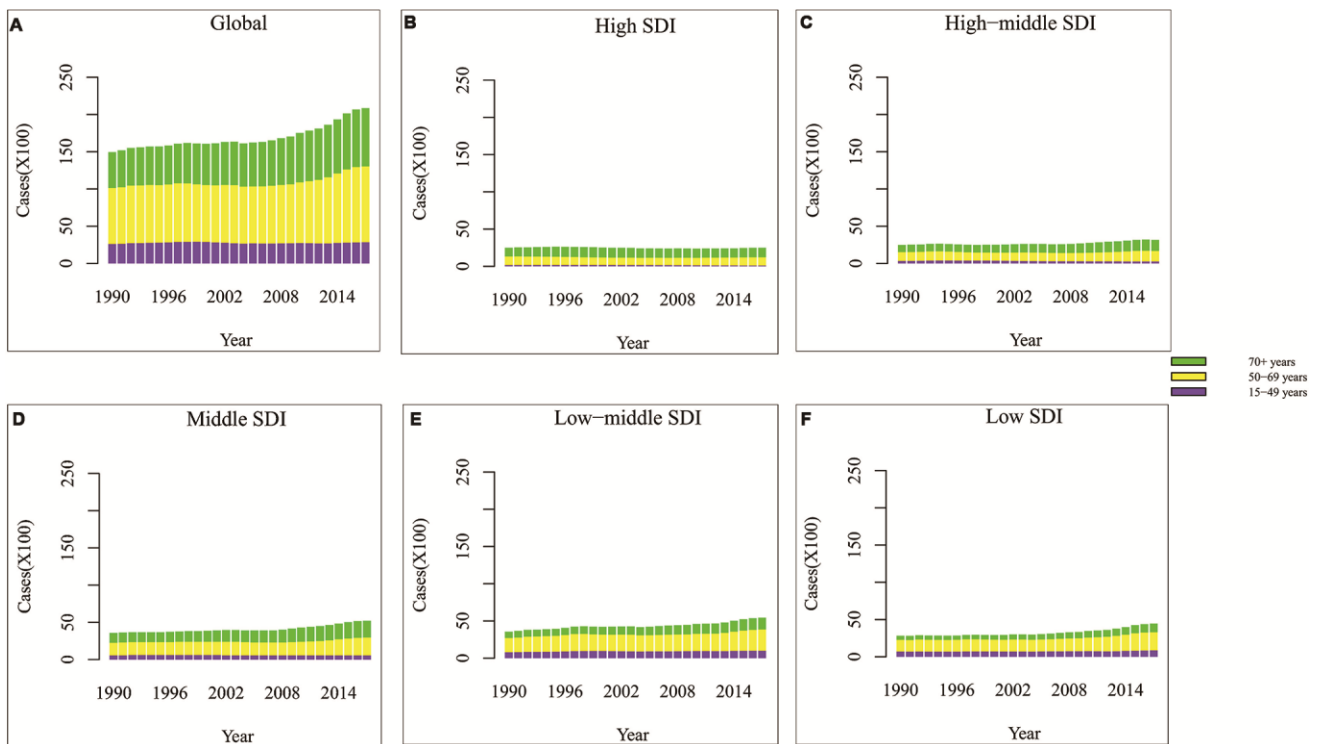




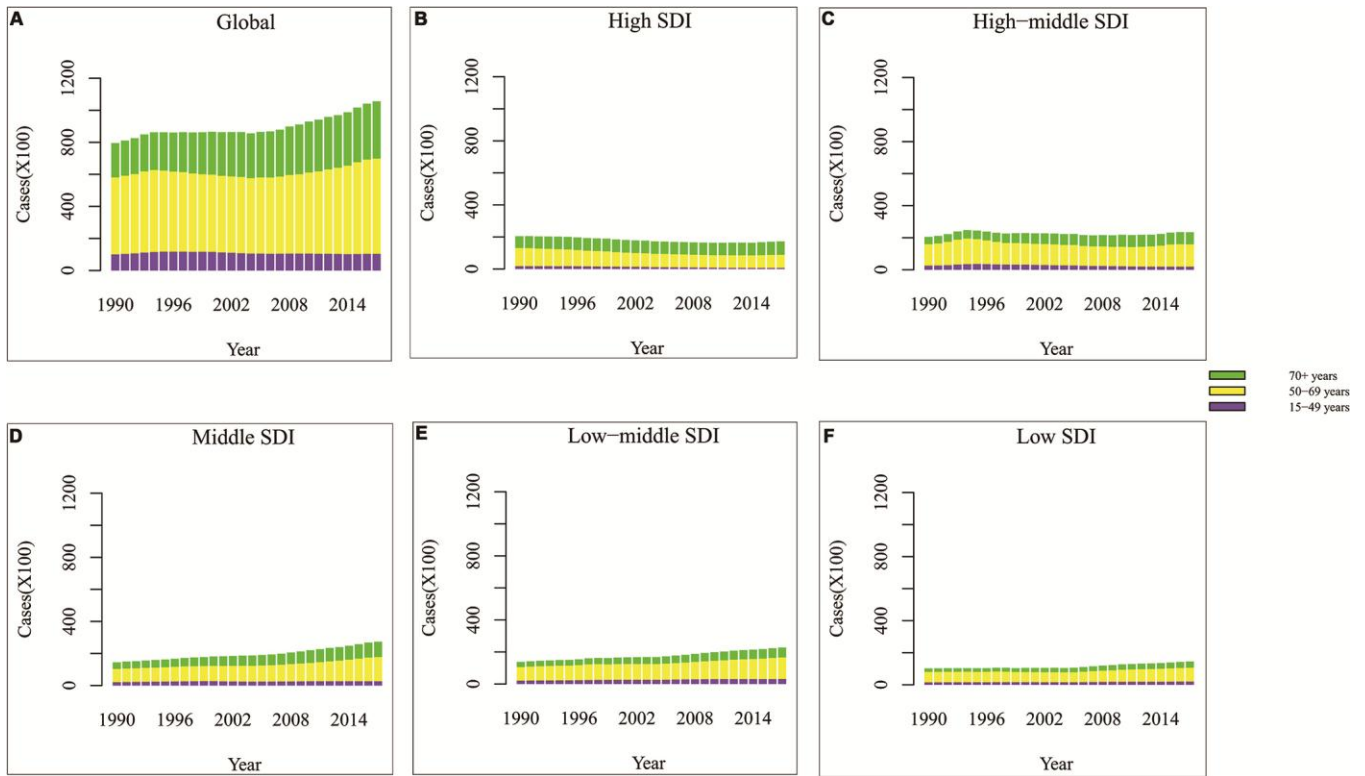
**Supplementary Figure 10. The global death burden of larynx cancer among male in 195 countries.** (A) The ASDR of larynx cancer in 2017; (B) The relative change in deaths of larynx cancer between 1990 and 2017; (C) The EAPC of larynx cancer ASDR from 1990 to 2017. Countries with an extreme number of cases/evolution were annotated. ASDR, age-standardized death rate; EAPC, estimated annual percentage change.



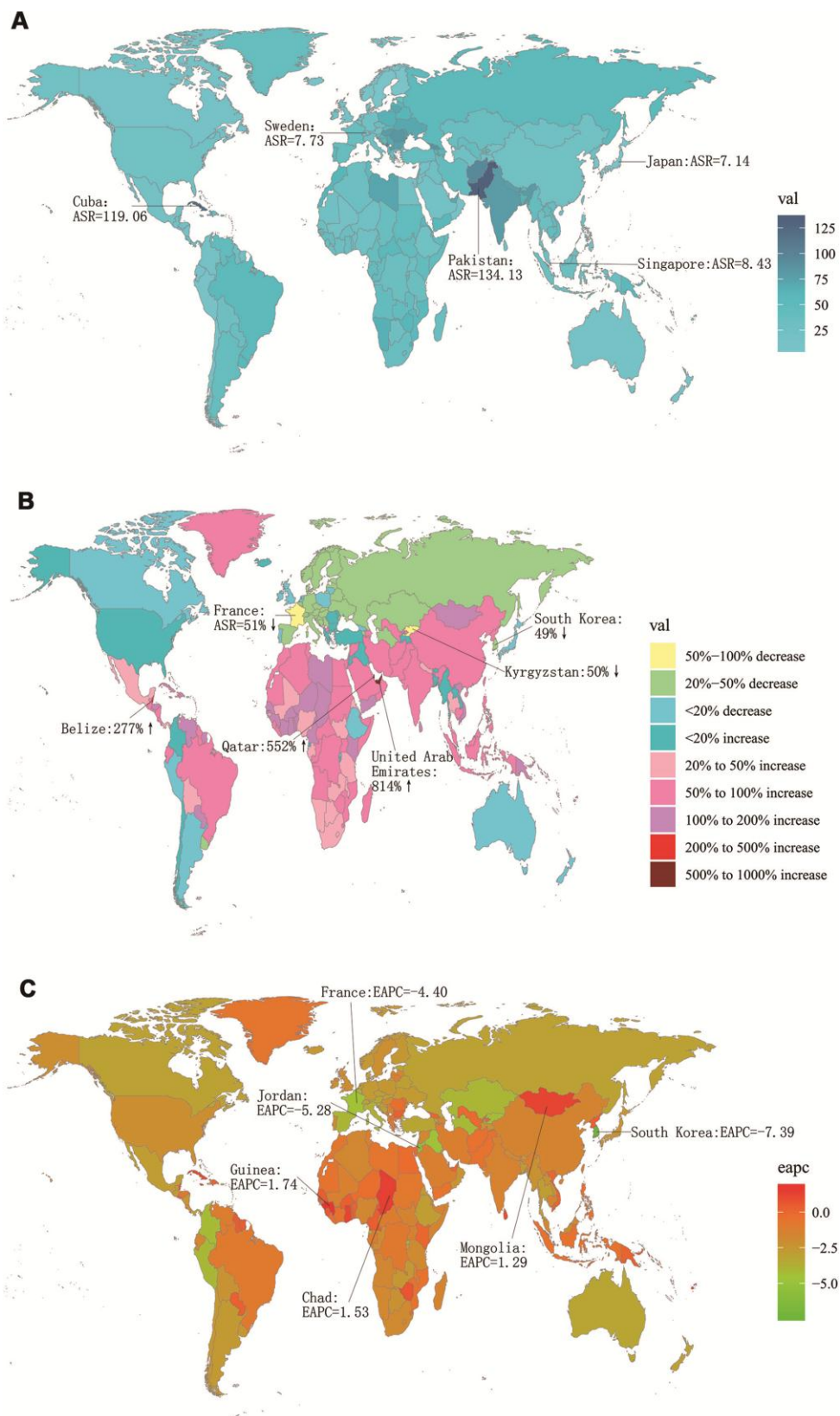
**Supplementary Figure 11. Deaths of larynx cancer among 28 years, three age groups and different SDI quantiles. (A)Global; (B) High SDI; (C) High-middle SDI; (D) Middle SDI; (E) Low-middle SDI; (F) Low SDI. SDI, socio-demographic index.**



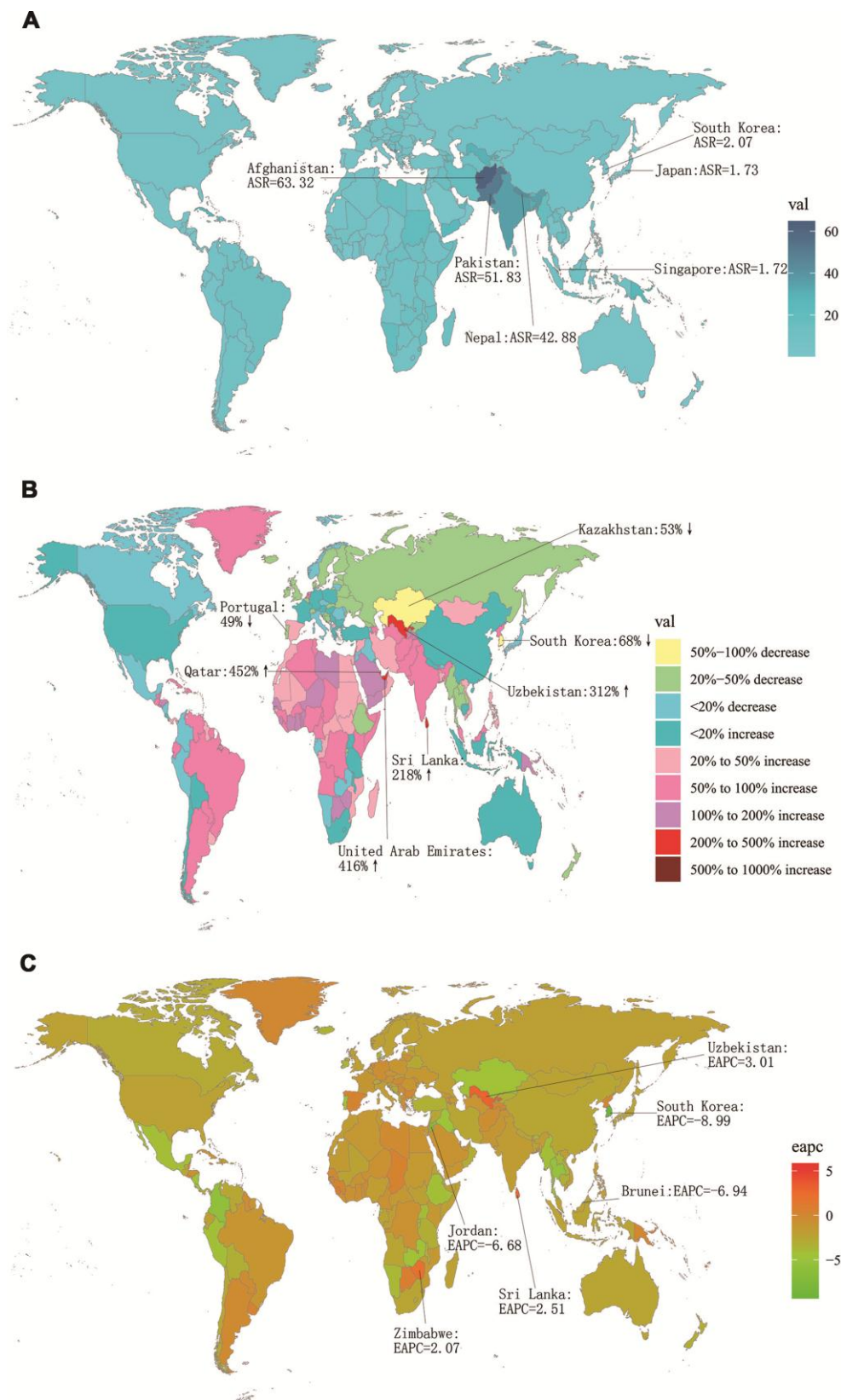
**Supplementary Figure 12. Deaths of larynx cancer among 28 years, three age groups and different SDI quantiles for female. (A)Global; (B) High SDI; (C) High-middle SDI; (D) Middle SDI; (E) Low-middle SDI; (F) Low SDI. SDI, socio-demographic index.**



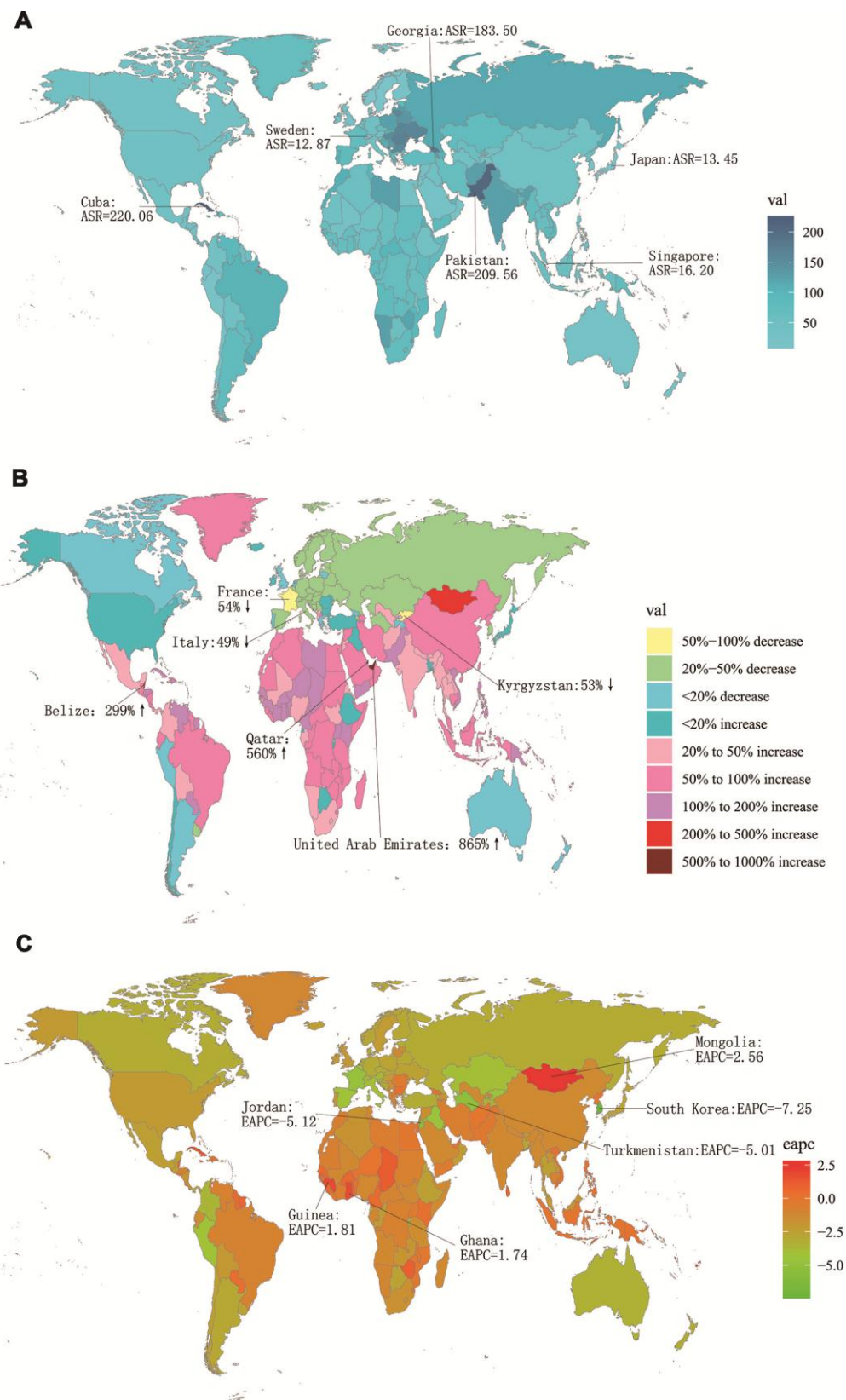
**Supplementary Figure 13. Deaths of larynx cancer among 28 years, three age groups and different SDI quantiles for male. (A)** Global; **(B)** High SDI; **(C)** High-middle SDI; **(D)** Middle SDI; **(E)** Low-middle SDI; **(F)** Low SDI. SDI, socio-demographic index.



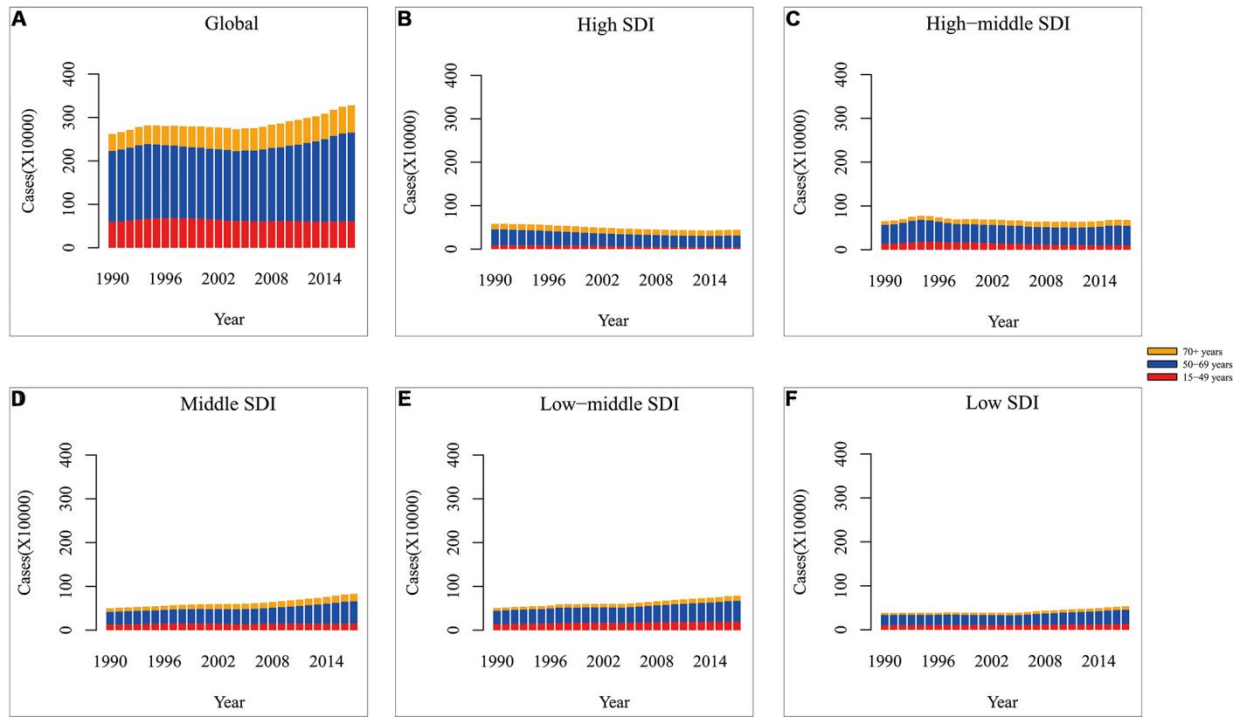
**Supplementary Figure 14. The global DALYs burden of larynx cancer for both sexes in 195 countries. (A)** The age-standardized DALY rate of larynx cancer in 2017; **(B)** The relative change in DALYs of larynx cancer between 1990 and 2017; **(C)** The EAPC of larynx cancer age-standardized DALY rate from 1990 to 2017. Countries with an extreme number of cases/evolution were annotated. DALY, disability adjusted life-year; EAPC, estimated annual percentage change.



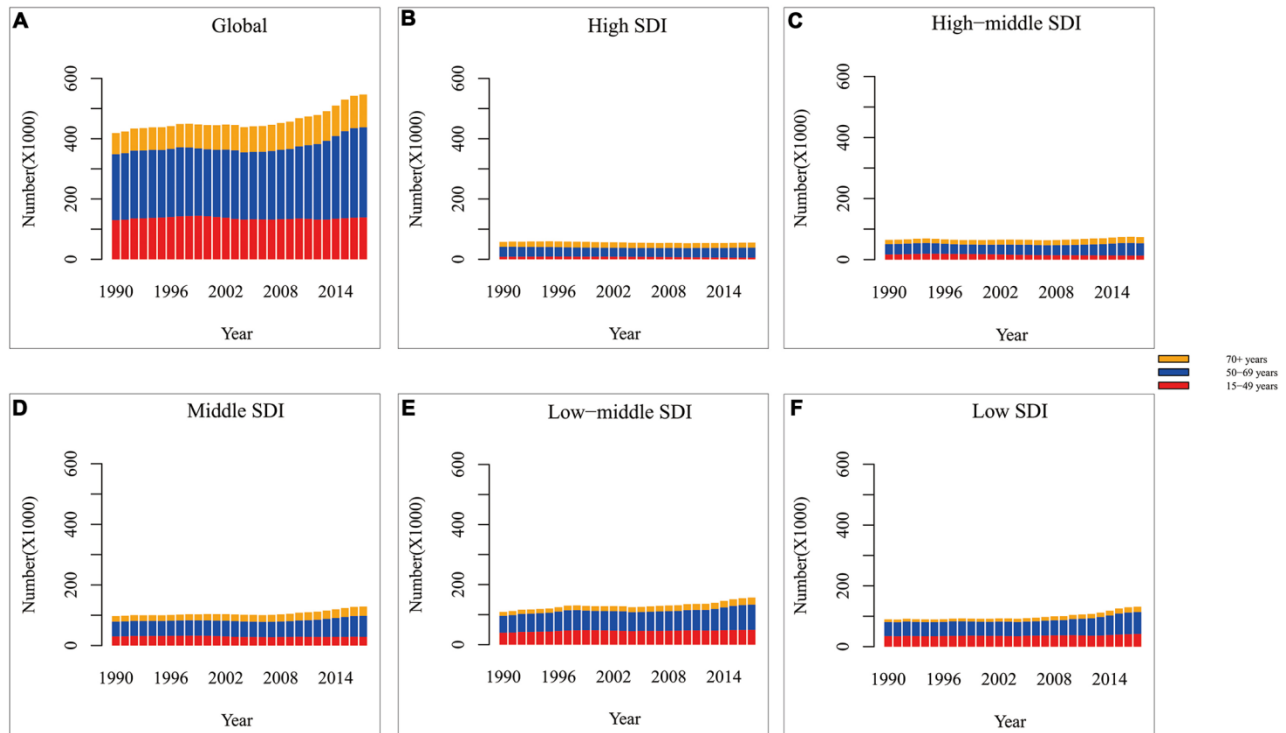
**Supplementary Figure 15. The global DALYs burden of larynx cancer for among female in 195 countries. (A)** The age-standardized DALY rate of larynx cancer in 2017; **(B)** The relative change in DALYs of larynx cancer between 1990 and 2017; **(C)** The EAPC of larynx cancer age-standardized DALY rate from 1990 to 2017. Countries with an extreme number of cases/evolution were annotated. DALY, disability adjusted life-year; EAPC, estimated annual percentage change.



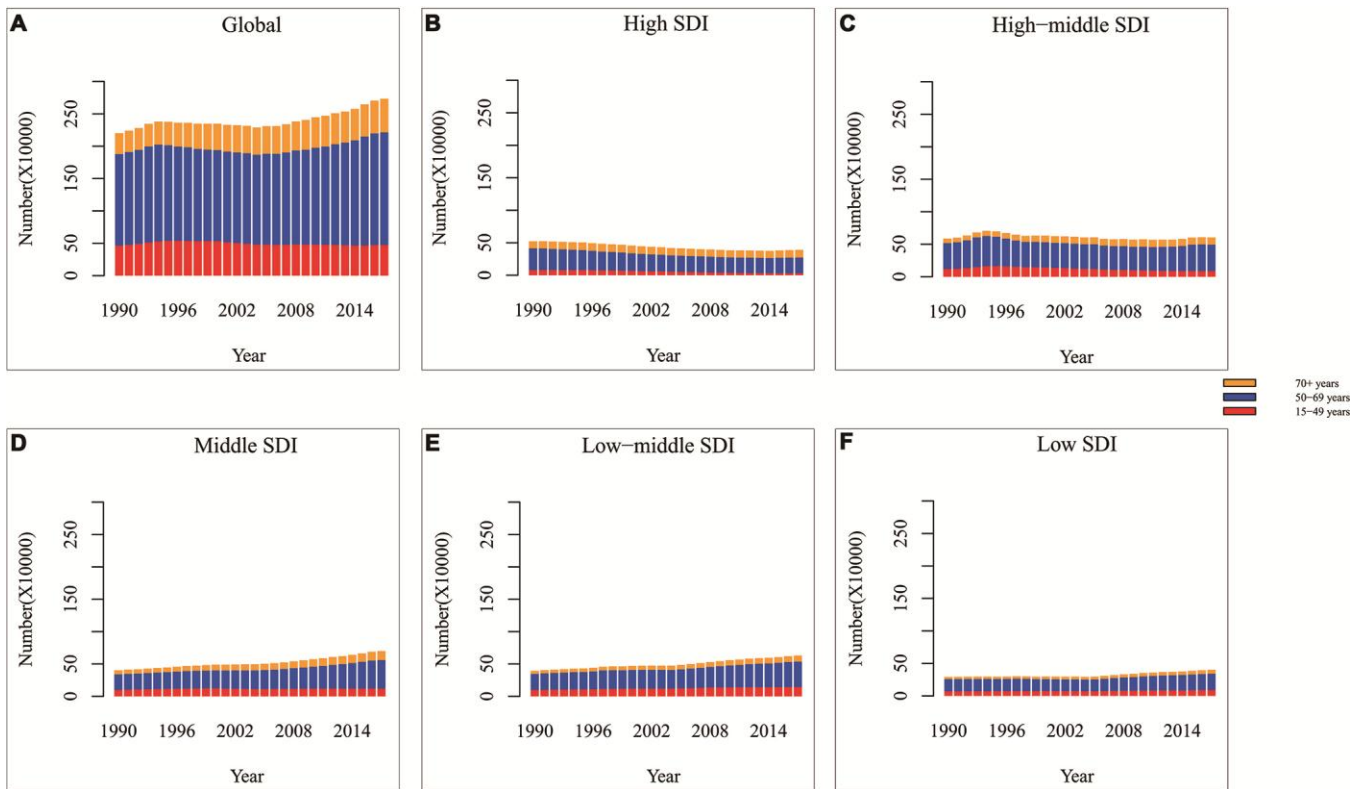
**Supplementary Figure 16. The global DALYs burden of larynx cancer for among male in 195 countries. (A) The age-standardized DALY rate of larynx cancer in 2017; (B) The relative change in DALYs of larynx cancer between 1990 and 2017; (C) The EAPC of larynx cancer age-standardized DALY rate from 1990 to 2017. Countries with an extreme number of cases/evolution were annotated. DALY, disability adjusted life-year; EAPC, estimated annual percentage change.**



**Supplementary Figure 17. DALYs of larynx cancer among 28 years, three age groups and different SDI quantiles. (A)Global; (B) High SDI; (C) High-middle SDI; (D) Middle SDI; (E) Low-middle SDI; (F) Low SDI. DALY, disability adjusted life-year; SDI, socio-demographic index.**

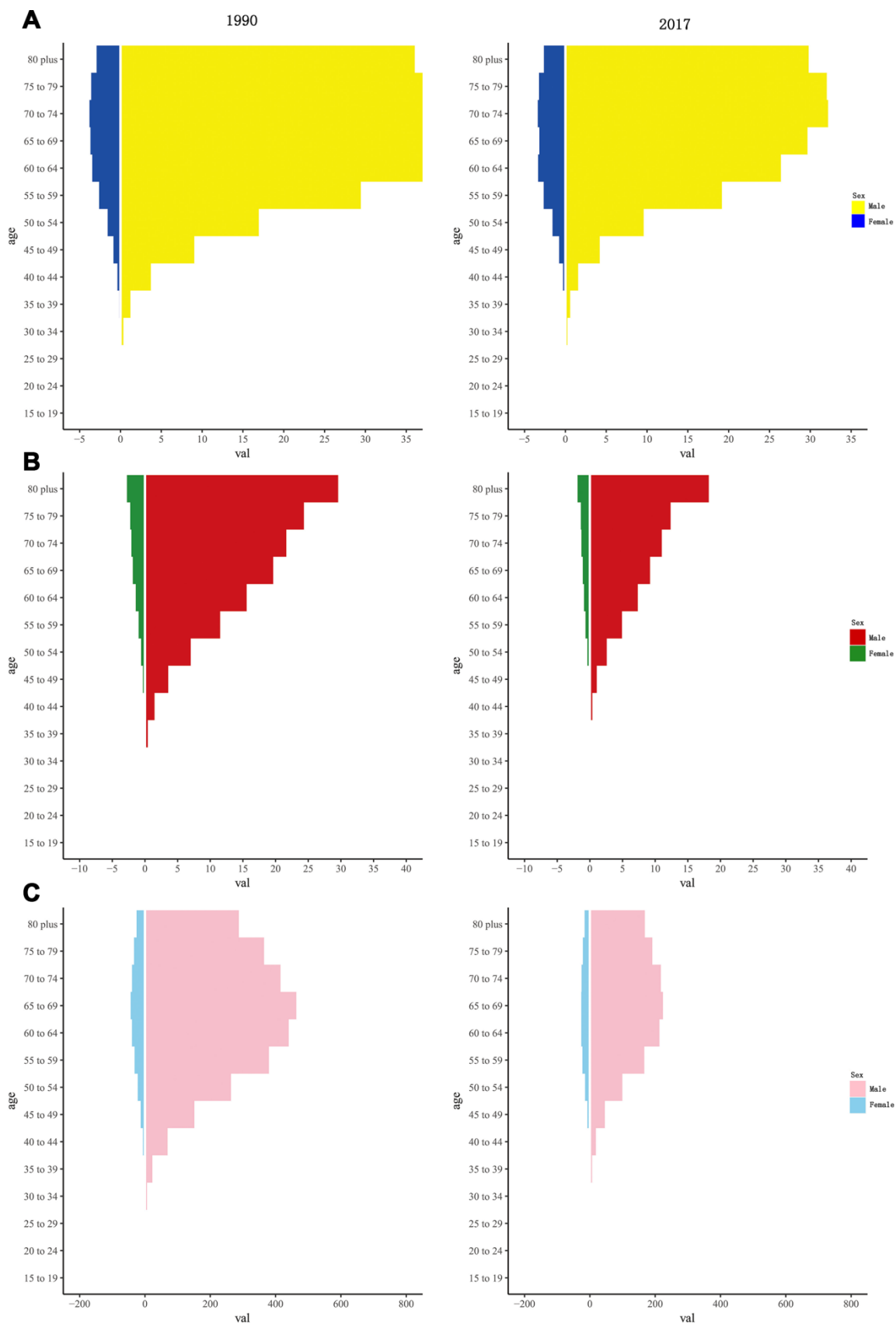


**Supplementary Figure 18. DALYs of larynx cancer among 28 years, three age groups and different SDI quantiles for female. (A)Global; (B) High SDI; (C) High-middle SDI; (D) Middle SDI; (E) Low-middle SDI; (F) Low SDI. DALY, disability adjusted life-year; SDI, socio-demographic index**

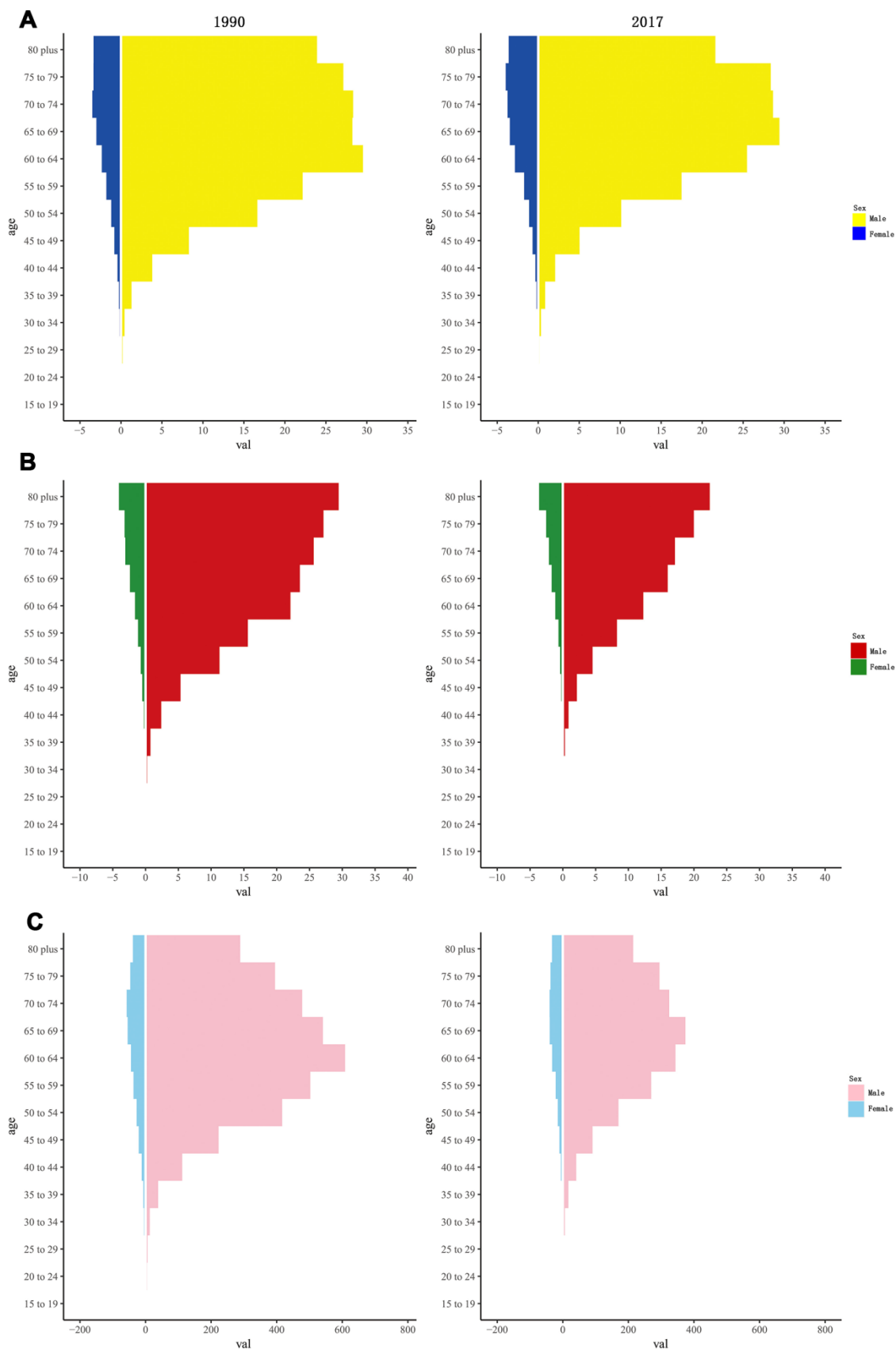


**Supplementary Figure 19. DALYs of larynx cancer among 28 years, three age groups and different SDI quantiles for male.** (A)Global; (B) High SDI; (C) High-middle SDI; (D) Middle SDI; (E) Low-middle SDI; (F) Low SDI. DALY, disability adjusted life-year; SDI, socio-demographic index

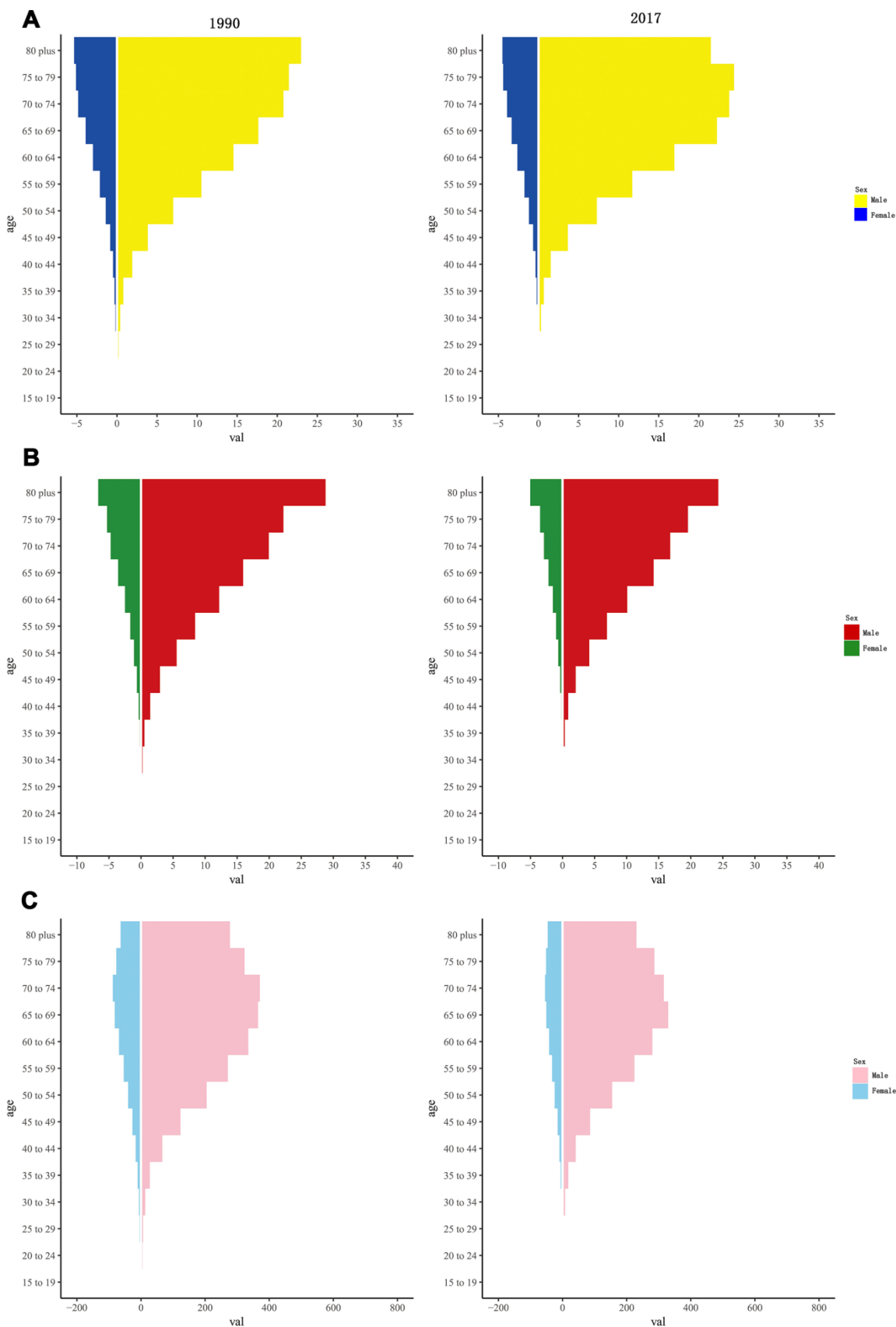




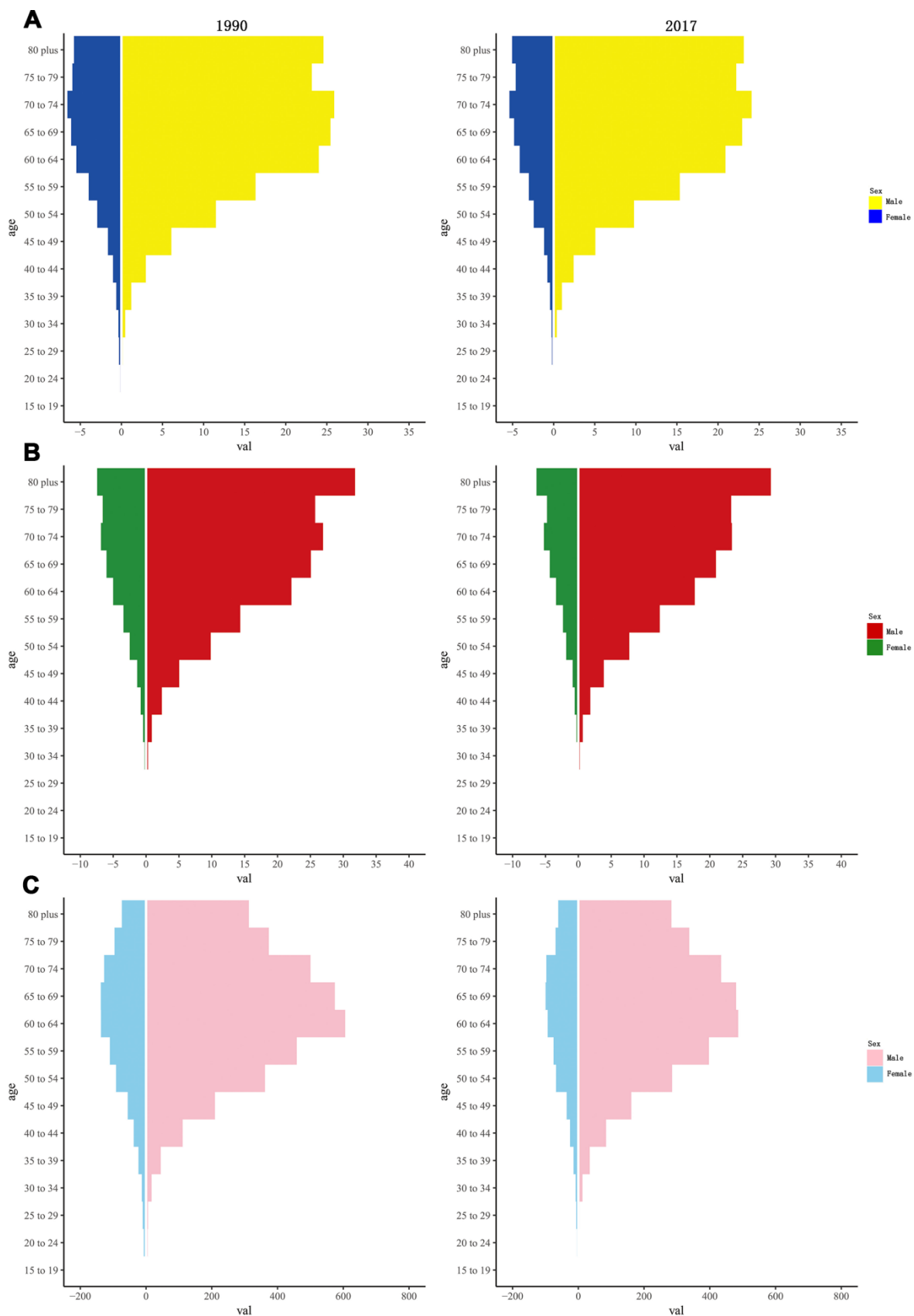
**Supplementary Figure 20. The rate of larynx cancer in high SDI countries among gender and age in 1990 and 2017. (A) incidence rate; (B) death rate; (C) DALY rate. DALY, disability adjusted life-year.**



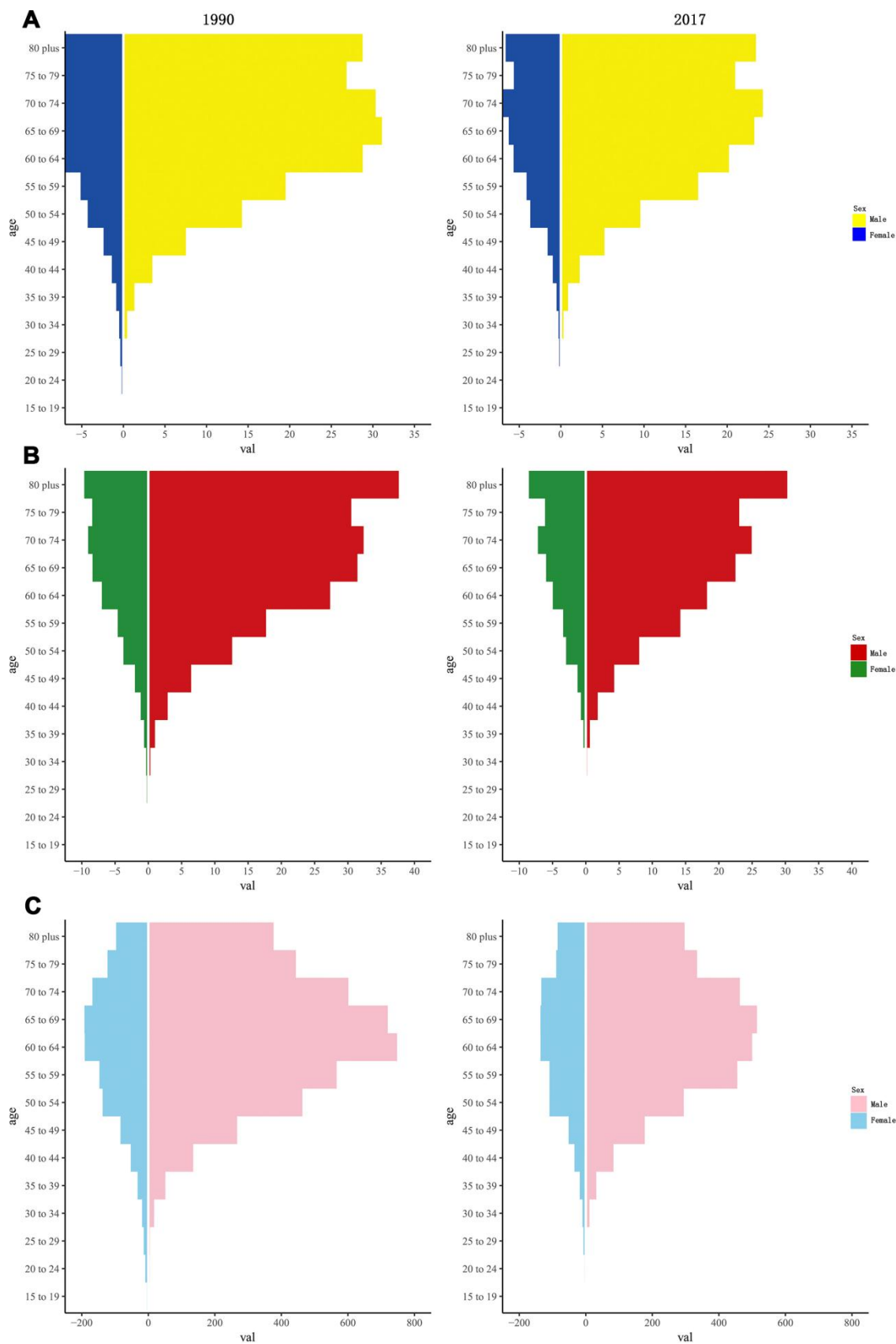
**Supplementary Figure 21. The rate of larynx cancer in high-middle SDI countries among gender and age in 1990 and 2017. (A) incidence rate; (B) death rate; (C) DALY rate. DALY, disability adjusted life-year.**



**Supplementary Figure 22. The rate of larynx cancer in middle SDI countries among gender and age in 1990 and 2017. (A) incidence rate; (B) death rate; (C) DALY rate. DALY, disability adjusted life-year.**



**Supplementary Figure 23.** The rate of larynx cancer in low-middle SDI countries among gender and age in 1990 and 2017. (A) incidence rate; (B) death rate; (C) DALY rate. DALY, disability adjusted life-year.



**Supplementary Figure 24.** The rate of larynx cancer in low SDI countries among gender and age in 1990 and 2017. (A) incidence rate; (B) death rate; (C) DALY rate. DALY, disability adjusted life-year.