

## Supplementary Online Content

Saber H, Saver JL. Distributional validity and prognostic power of the National Institutes of Health Stroke Scale in US administrative claims data. *JAMA Neurol*. Published online February 17, 2020. doi:10.1001/jamaneurol.2019.5061

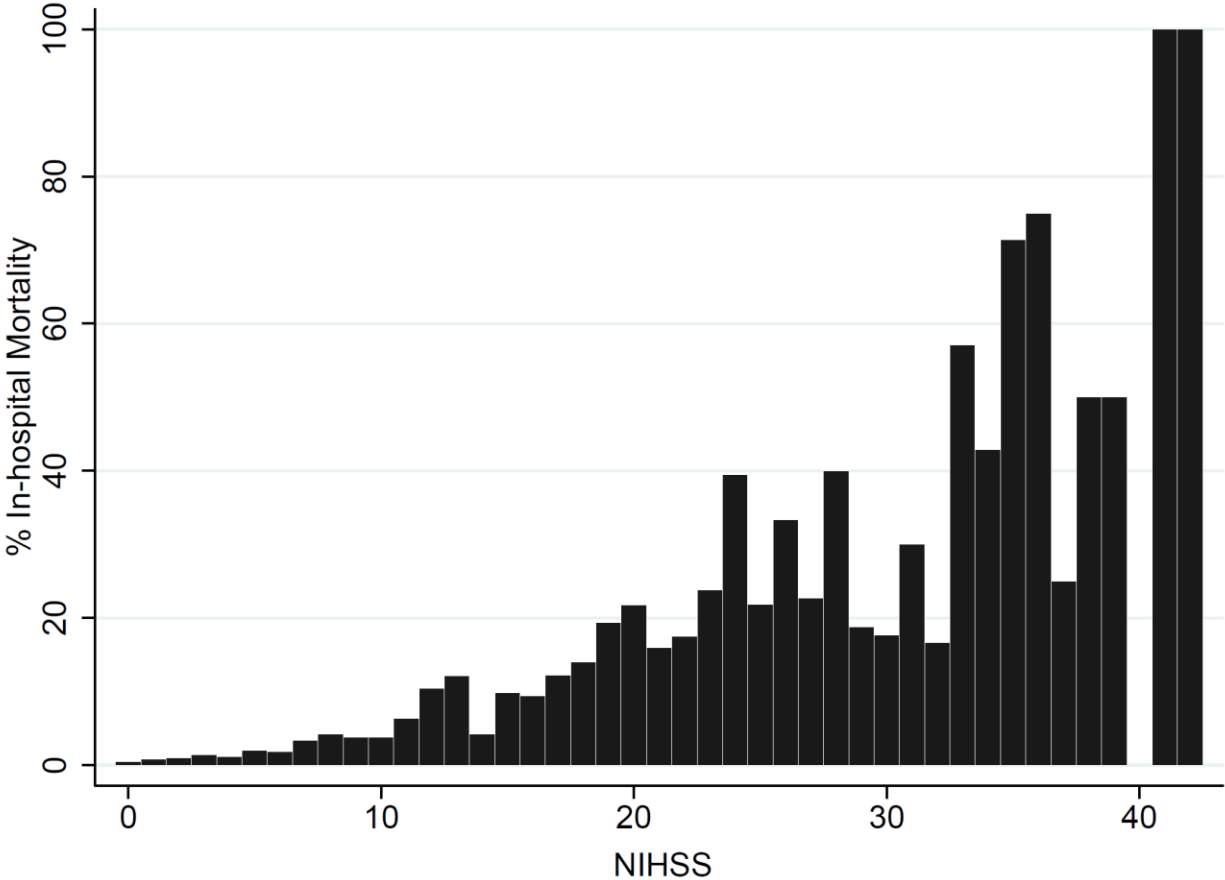
**eFigure 1.** In-hospital mortality rates associated with different initial administratively-reported NIHSS scores in United States National Inpatient Sample

**eFigure 2.** Rates of excellent outcome (discharge home) associated with different initial administratively-reported NIHSS scores in United States National Inpatient Sample

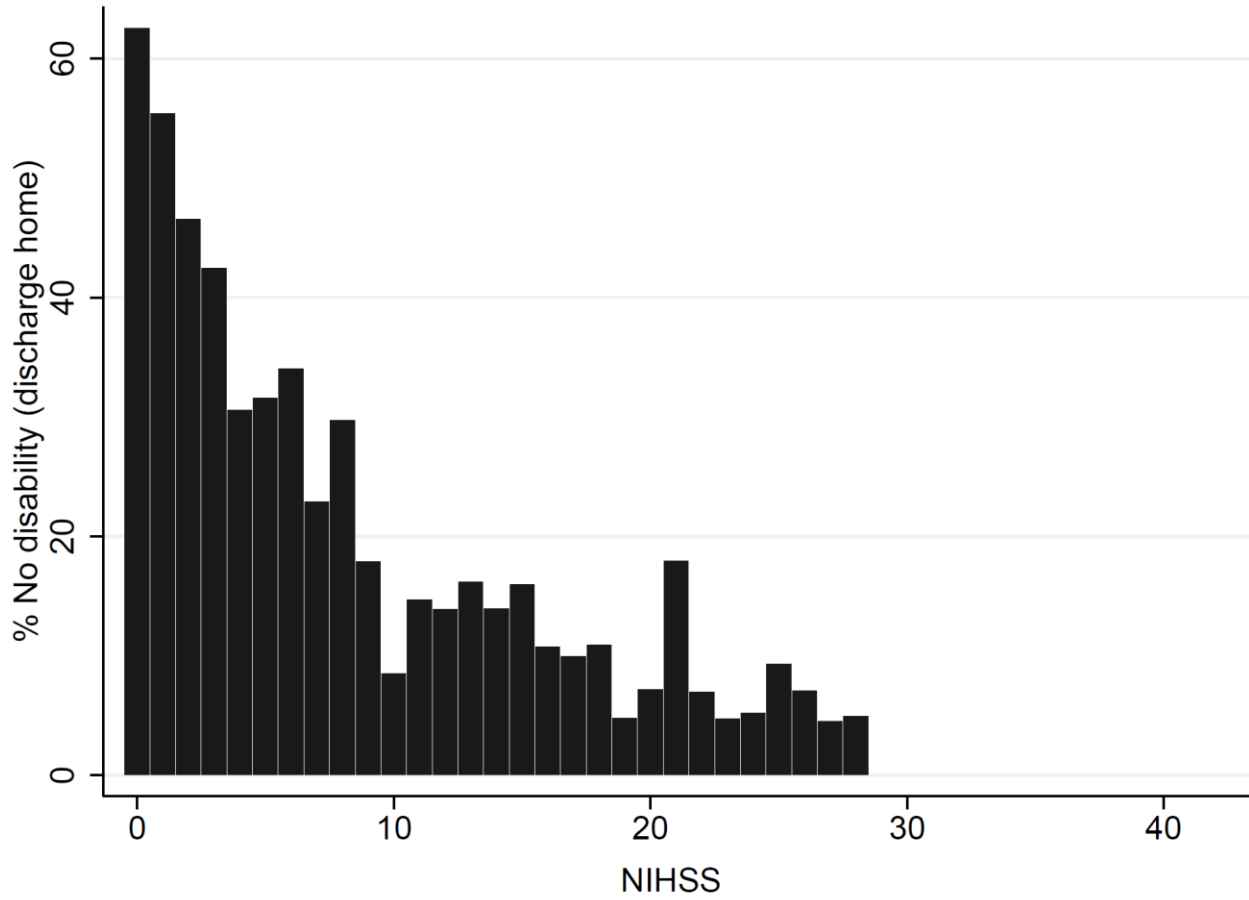
**eFigure 3.** The distribution of NIHSS score reporting rates across hospitals with at least one NIHSS report performance

This supplementary material has been provided by the authors to give readers additional information about their work.

**eFigure 1.** In-hospital mortality rates associated with different initial administratively-reported NIHSS scores in United States National Inpatient Sample



**eFigure 2.** Rates of excellent outcome (discharge home) associated with different initial administratively-reported NIHSS scores in United States National Inpatient Sample



**eFigure 3.** The distribution of NIHSS score reporting rates across hospitals with at least one NIHSS report performance

