

Supplementary Online Content

Vila PM, Jeanpierre LM, Rizzi CJ, Yaeger LH, Chi JJ. Comparison of autologous vs homologous costal cartilage in dorsal augmentation rhinoplasty: a systematic review and meta-analysis. *JAMA Otolaryngol Head Neck Surg*. Published online February 20, 2020. doi:10.1001/jamaoto.2019.4787

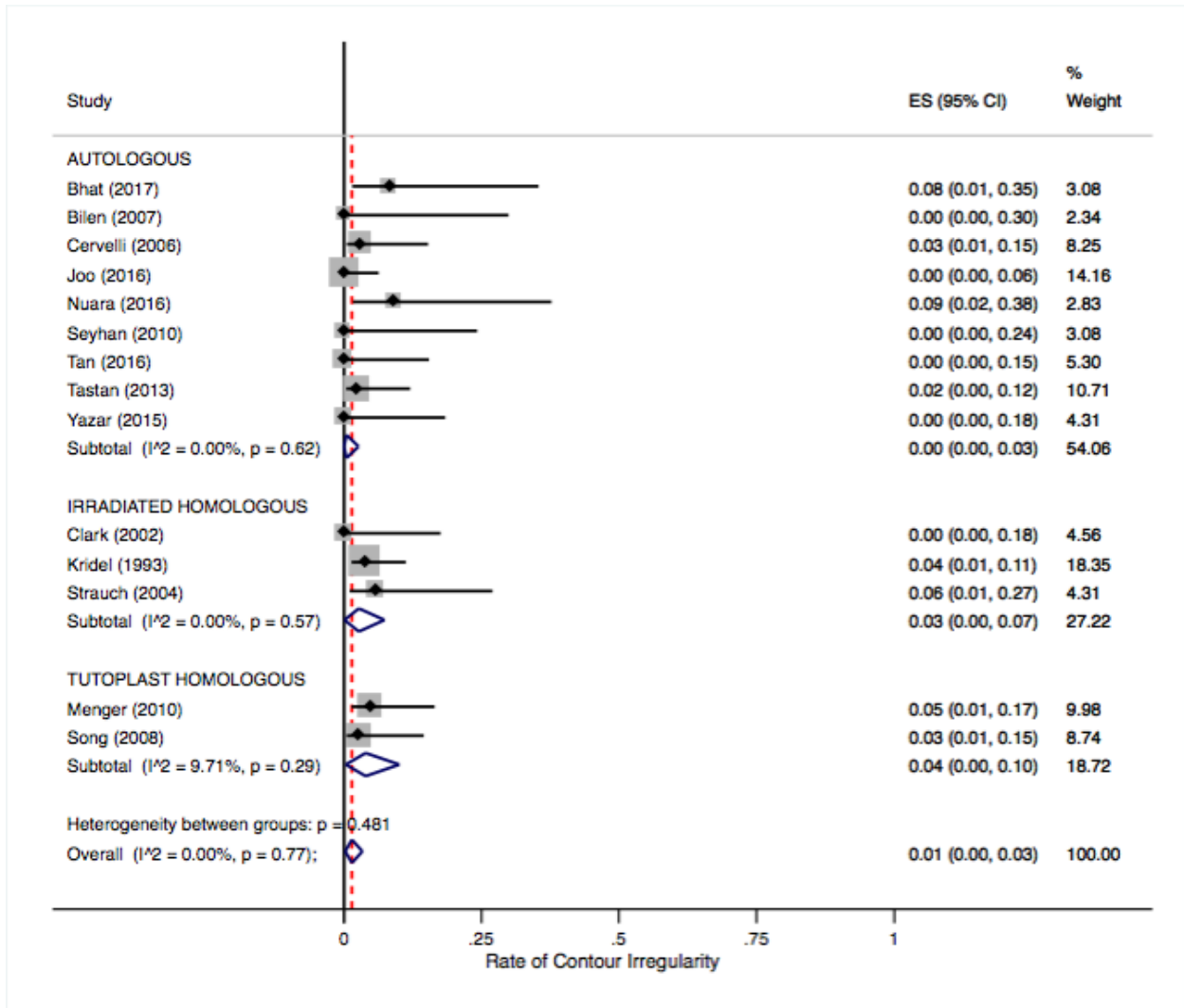
eFigure 1. Meta-analysis of Studies Examining Rates of Contour Irregularity Between Cartilage Graft Types

eFigure 2. Meta-analysis of Studies Examining Infection Rates Between Cartilage Graft Types

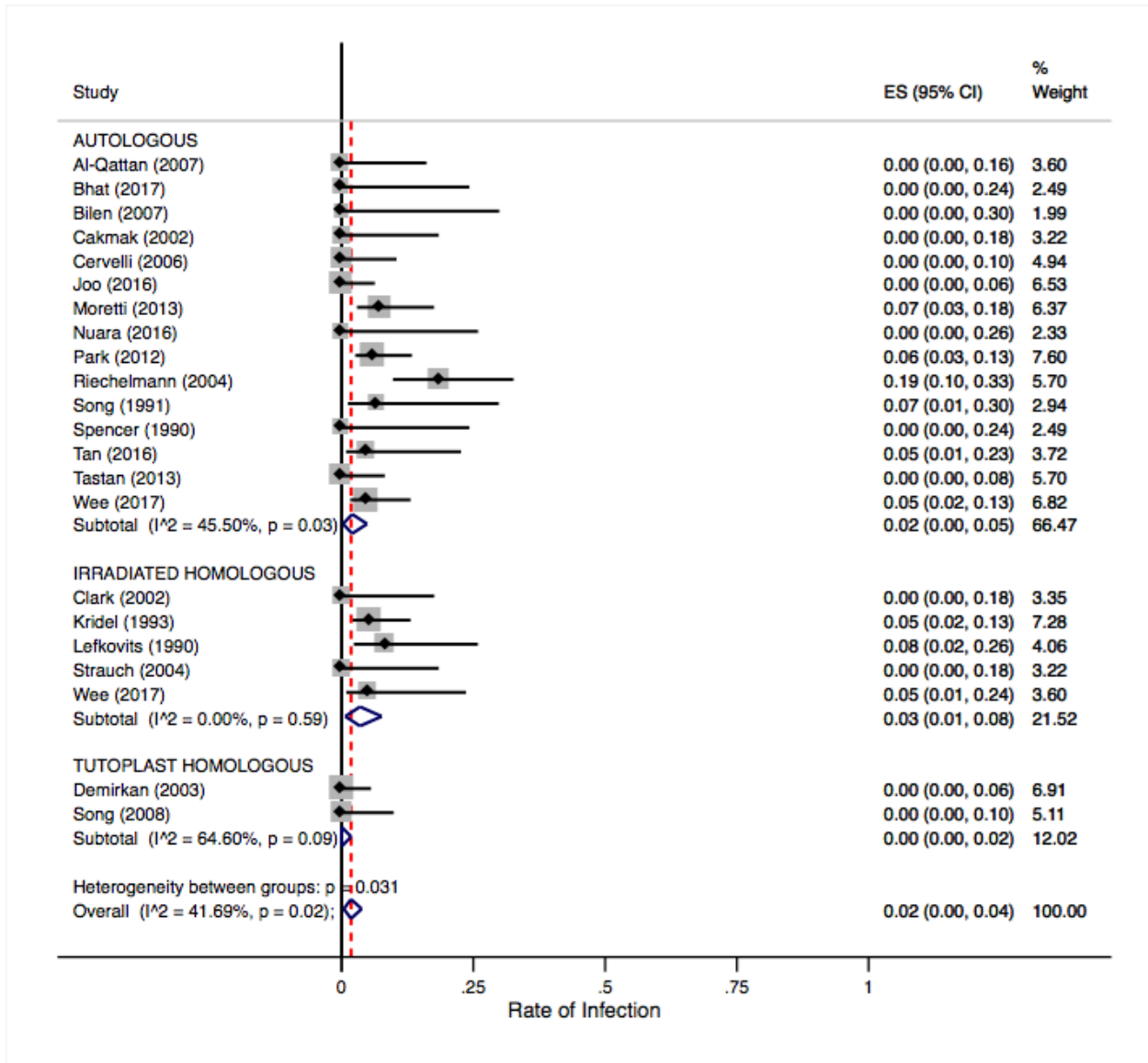
eTable. Risk of Bias Assessment Among Included Studies

This supplementary material has been provided by the authors to give readers additional information about their work.

eFigure 1. Meta-analysis of studies examining rates of contour irregularity between cartilage graft types



eFigure 2. Meta-analysis of studies examining infection rates between cartilage graft types



eTable. Risk of bias assessment among included studies

Reference	Overall Risk of Bias	Random sequence generation	Allocation concealment	Blinding of participants and personnel	Incomplete outcome data	Selective reporting	Other sources of bias
Al-Qattan 2007	High	N/A	N/A	High	Low	Unclear	Unclear
Balaji 2013	High	N/A	N/A	High	Unclear	Unclear	Unclear
Bhat 2017	High	N/A	N/A	High	Unclear	Unclear	Unclear
Bilen 2007	High	N/A	N/A	High	Unclear	Unclear	Unclear
Cakmak 2002	High	N/A	N/A	High	Unclear	Unclear	Unclear
Cervelli 2006	High	N/A	N/A	High	Unclear	Unclear	Unclear
Hussein 2015	Unclear	N/A	N/A	Unclear	Unclear	Unclear	Unclear
Joo 2016	Unclear	N/A	N/A	Low	Low	Unclear	Unclear
Karaaltin 2012	High	N/A	N/A	High	Unclear	Unclear	Unclear
Moretti 2013	High	N/A	N/A	High	Unclear	Unclear	Unclear
Nuara 2016	High	N/A	N/A	High	Unclear	Unclear	Unclear
Park 2012	Unclear	N/A	N/A	Low	Low	Unclear	Unclear
Riechelmann 2004	High	N/A	N/A	High	Unclear	Unclear	Unclear
Seyhan 2010	Unclear	N/A	N/A	Unclear	Unclear	Unclear	Unclear
Song 1991	High	N/A	N/A	High	Unclear	Unclear	Unclear
Spencer 1990	High	N/A	N/A	High	Unclear	Unclear	Unclear
Tan 2016	High	N/A	N/A	High	Unclear	Unclear	Unclear
Tastan 2013	High	N/A	N/A	High	Unclear	Unclear	Unclear
Wee 2017	Unclear	N/A	N/A	Low	Low	Unclear	Unclear
Yazar 2015	High	N/A	N/A	High	Unclear	Unclear	Unclear
Yilmaz 2007	High	N/A	N/A	High	Unclear	Unclear	Unclear
Clark 2002	High	N/A	N/A	High	Low	Unclear	Unclear
Kridel 1993	High	N/A	N/A	High	Low	Unclear	Unclear
Lefkovits 1990	High	N/A	N/A	High	Unclear	Unclear	Unclear
Strauch 2004	High	N/A	N/A	High	Unclear	Unclear	Unclear
Demirkan 2003	High	N/A	N/A	High	Unclear	Unclear	Unclear
Menger 2010	High	N/A	N/A	High	Low	Unclear	Unclear
Song 2008	High	N/A	N/A	High	Unclear	Unclear	Unclear