

Supplementary Online Content

Spillane S, Shiels MS, Best AF, et al. Trends in alcohol-induced deaths in the United States, 2000-2016. *JAMA Netw Open*. 2020;3(2):e1921451. doi:10.1001/jamanetworkopen.2019.21451

eFigure 1. Age-Standardized Rates of Alcohol-Induced Deaths, 2000-2016, by Sex and Specific Cause

eFigure 2. Male and Female Age-Specific Rates of Alcohol-Induced Deaths for 2013-2016 vs 2009-2012 for Latino/Latina and non-Latino Black Individuals

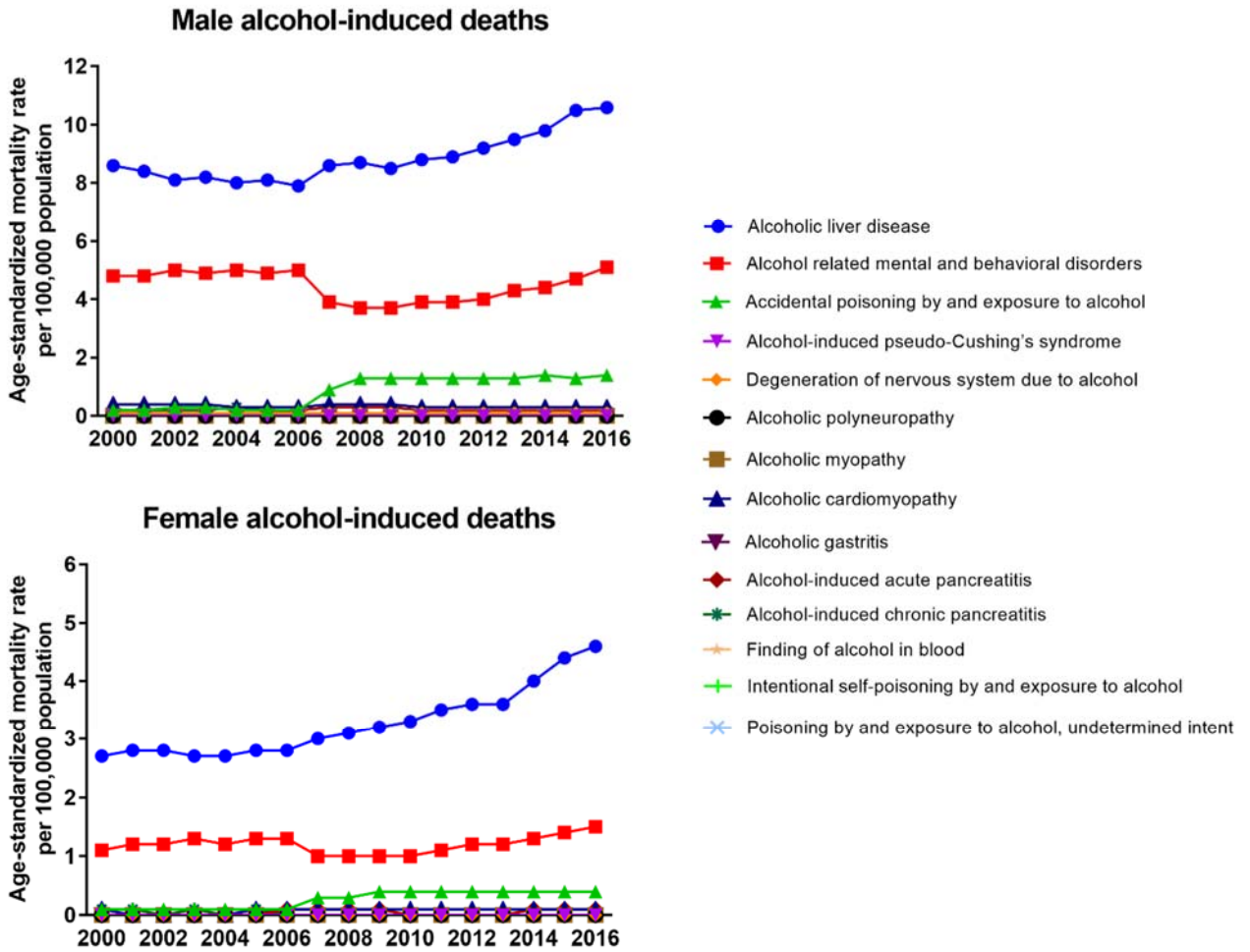
eFigure 3. Male and Female Birth Cohort Effects Derived From Age-Period-Cohort Models for Persons Aged 20-80 Years, Inclusive

eFigure 4. Male and Female Time Period Effects Derived From Age-Period-Cohort Models for Persons Aged 20-80 Years, Inclusive

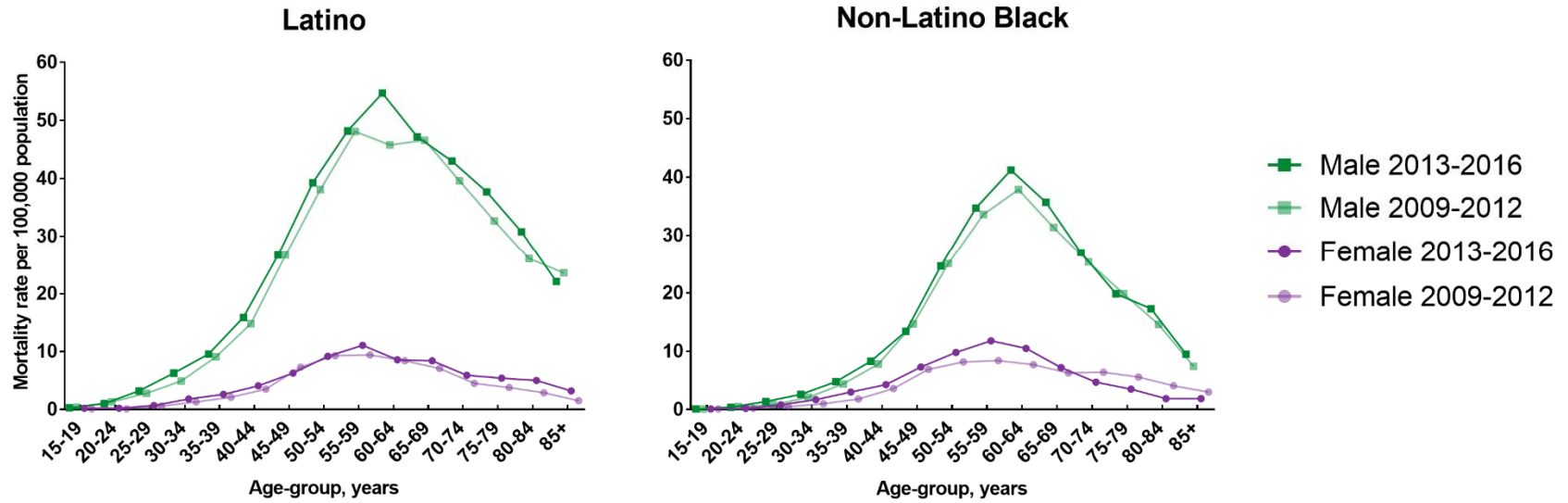
eFigure 5. Annual Percentage Change in Alcohol-Induced Mortality Rate, 2000-2016, by County-Level Socioeconomic Status (SES) and Rurality

This supplementary material has been provided by the authors to give readers additional information about their work.

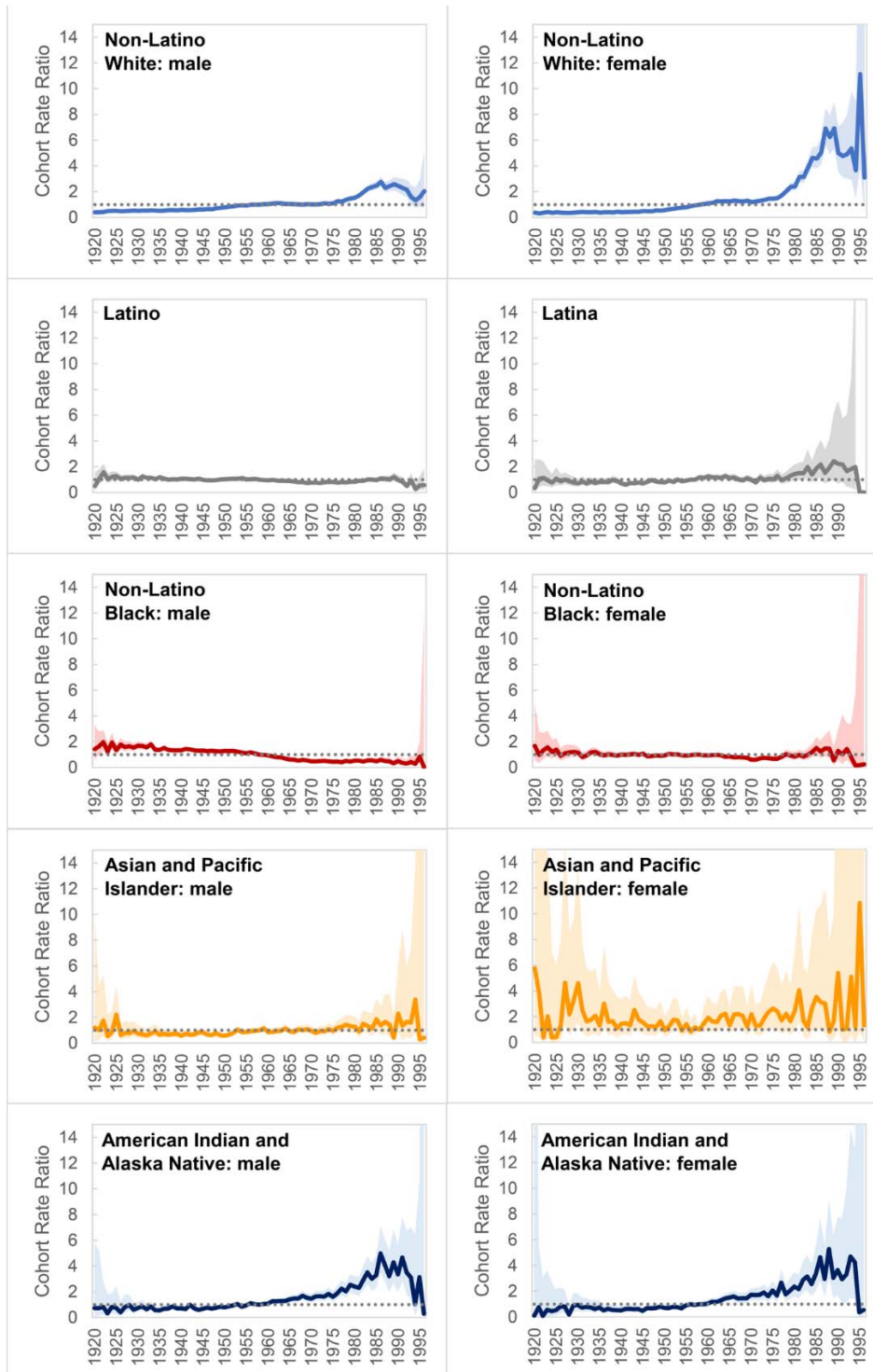
eFigure 1. Age-Standardized Rates of Alcohol-Induced Deaths, 2000-2016, by Sex and Specific Cause



eFigure 2. Male and Female Age-Specific Rates of Alcohol-Induced Deaths for 2013-2016 vs 2009-2012 for Latino/Latina and non-Latino Black Individuals

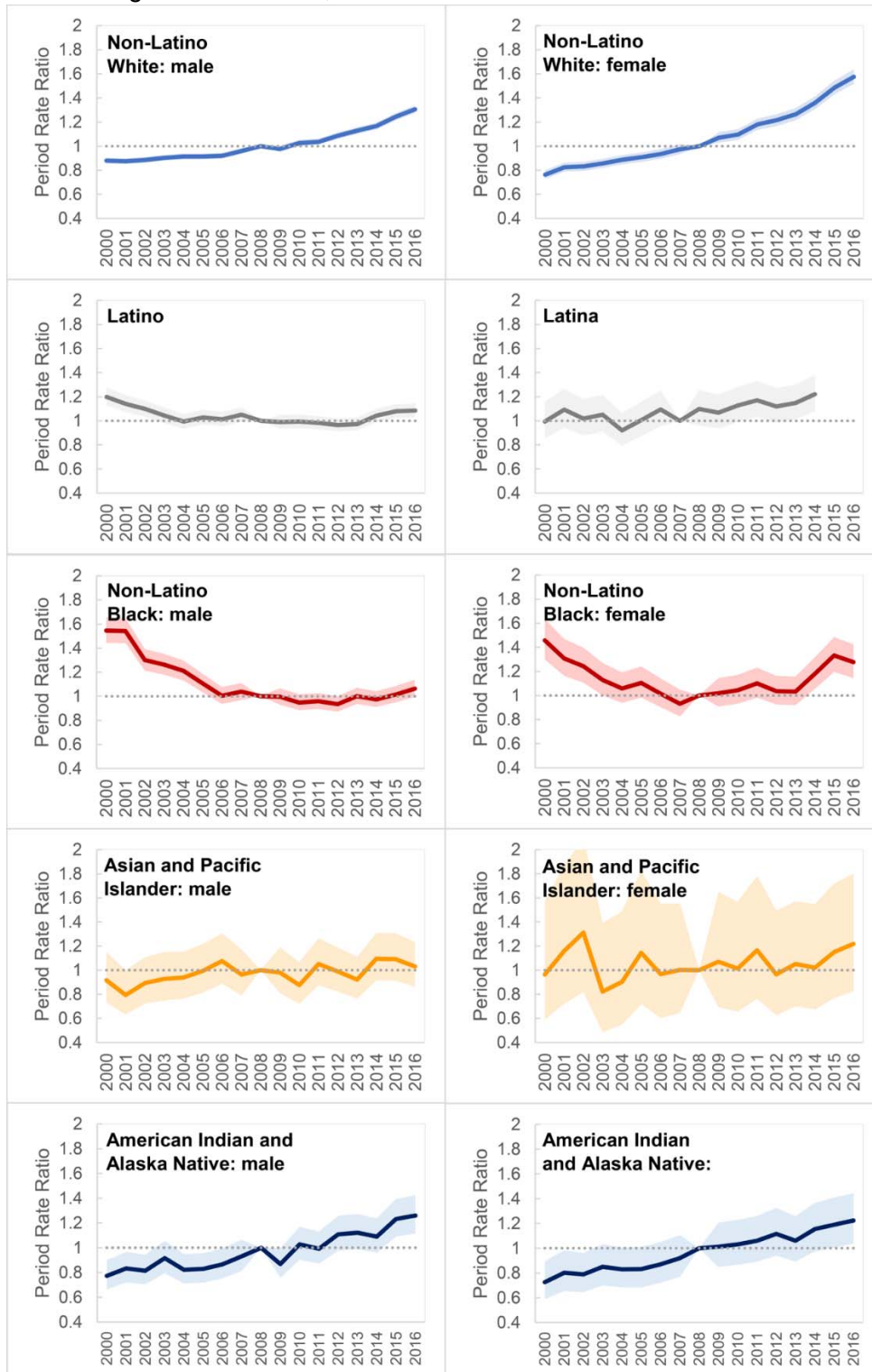


eFigure 3. Male and Female Birth Cohort Effects Derived From Age-Period-Cohort Models for Persons Aged 20-80 Years, Inclusive



Alcohol-induced mortality rate ratios (with shaded 95% confidence intervals) for each birth cohort, 1920-1996, are expressed relative to the middle birth cohort (1958) (rate ratio =1, depicted with dotted line). Due to sparsity of data 1994-1996, Latina rate ratios are expressed relative to 1956. Y-axis maximum set to "15" due to extremely high upper confidence intervals in some groups for the most recent birth cohorts.

eFigure 4. Male and Female Time Period Effects Derived From Age-Period-Cohort Models for Persons Aged 20-80 Years, Inclusive



Alcohol-induced mortality rate ratios (with shaded 95% confidence intervals) for the midpoint of each year, 2000-2016, are expressed relative to the mid-point (2008) (Due to sparsity of data, Latina rate ratios are expressed relative to 2007).

eFigure 5. Annual Percentage Change in Alcohol-Induced Mortality Rate, 2000-2016, by County-Level Socioeconomic Status (SES) and Rurality

