

OMTM, Volume 17

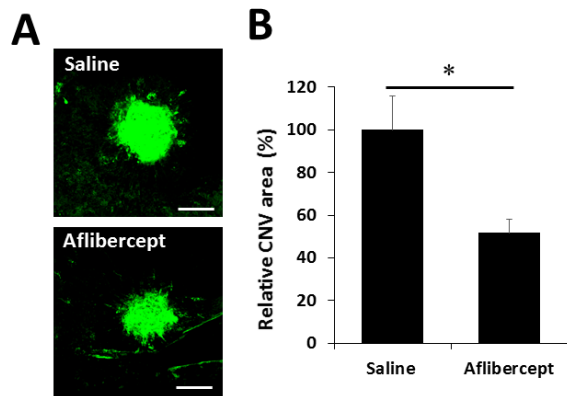
Supplemental Information

**Factors Impacting Efficacy of AAV-Mediated
CRISPR-Based Genome Editing
for Treatment of Choroidal Neovascularization**

Sook Hyun Chung, Iris Natalie Mollhoff, Uyen Nguyen, Amy Nguyen, Natalie Stucka, Eric Tieu, Suman Manna, Ratheesh Kumar Meleppat, Pengfei Zhang, Emerald Lovece Nguyen, Jared Fong, Robert Zawadzki, and Glenn Yiu

Supplementary Figure 1

(A) IB4-stained flat mount immunohistochemistry of CNV lesions from eyes injected with saline or 0.1mg aflibercept (Scale bars = 100 μ m). (B) Bar graphs comparing CNV size measured from IB4-staining (n=9). *P < 0.05, Student's t-test. Error bars = SEM.



Supplementary Table 1.

Site	Gene	Assay	Direction	Sequence (5' - 3')
SpCas9-V1	Mouse <i>VEGFa</i>	T7E1	Forward	GTCCAACCTTCTGGGCTCTTCTCG
SpCas9-V2	Mouse <i>VEGFa</i>	T7E1	Reverse	CCTCCACGTACGACGACAGAG
SaCas9-V1	Mouse <i>VEGFa</i>	T7E1	Forward	TGGCGAGCGAACAGAGAGAGGGACAGGGGC
SaCas9-V2	Mouse <i>VEGFa</i>	T7E1	Reverse	ACCCCCTCCCCCTCCACGTACGACGACAGA
SpCas9-V1	Mouse <i>VEGFa</i>	Deep Sequencing	Forward	TTCGTCCAACCTTCTGGGCTCTTCTC
SaCas9-V1	Mouse <i>VEGFa</i>	Deep Sequencing	Reverse	TTCGTCCAACCTTCTGGGCTCTTCTC
AAV-CRISPR Construct	AAV ITR	qPCR	Forward	GGAACCCCTAGTGATGGAGTT
	AAV ITR	qPCR	Reverse	CGGCCTCAGTGAGCGA