

## APPENDIX

### SCIENTIFIC ENVIRONMENT, COLLABORATION AND ORGANISATION OF CONCARD<sup>PCI</sup>

We have built a research team with a broad interdisciplinary profile involving local, regional, national and international collaborators. Collaborators range from emerging leaders as thematic project leaders to world-renowned senior scientists in the Scientific Advisory Board. Each member is a specialist in her/his field providing expert knowledge into the research project. An Expert Group who will be pivotal in translating evidence into healthcare has been established including representatives from Learning and Mastery Networks, Healthy Life Centres, health trusts, cardiac rehabilitation services, and patient organisations. Two patient representatives identified through the Norwegian Heart and Lung Patient Organisation are providing input to the planning, implementing and reporting of results from the programme. As these groups join forces, we will be especially well suited to undertake this large-scale registry-based multimethod multicentre study on patient pathways after percutaneous coronary intervention.

**Table I. The Scientific Advisory Board of CONCARD<sup>PCI</sup>**

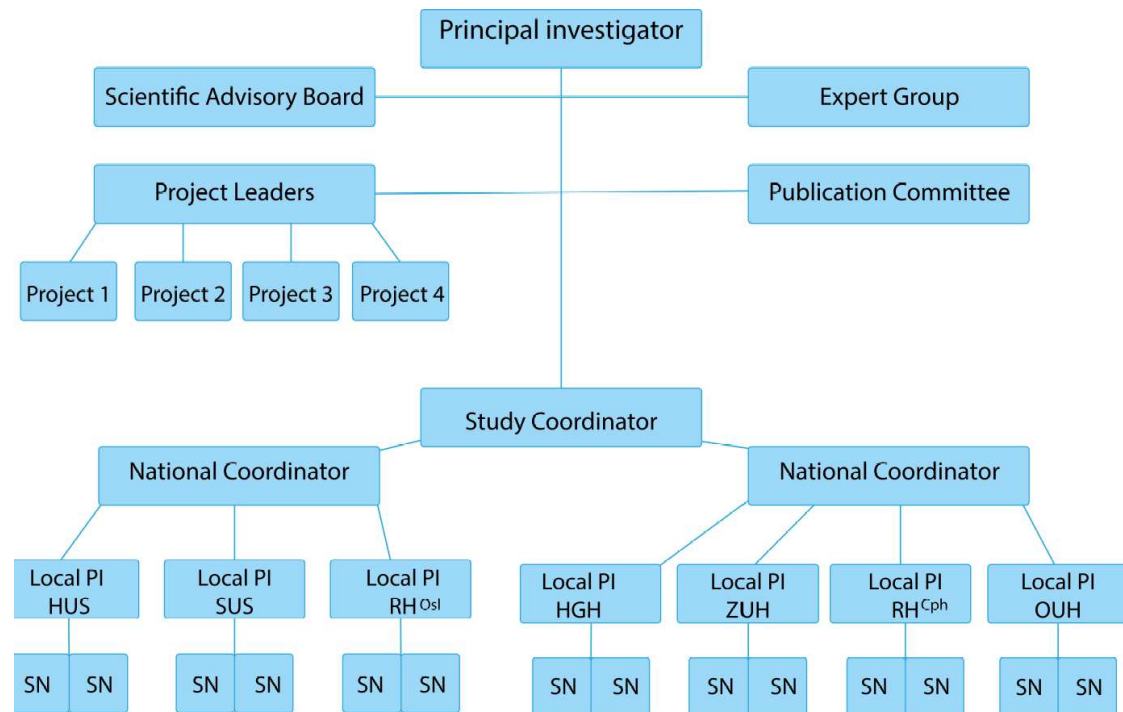
Scientific Advisory Board	Institution	Expertise
<b>Heather Allore</b> , PhD, Professor of Medicine (Geriatrics) and of Public Health (Biostatistics), and Director of the Yale Program on Aging Biostatistics Core	Yale University, USA	Design and analysis of studies of multi-component interventions and observational studies of multifactorial health conditions.
<b>Christi Deaton</b> , PhD, RN, FAHA, FESC, Florence Nightingale Foundation Professor of Clinical Nursing Research	University of Cambridge, UK	Wide clinical and research experience in acute cardiovascular patient care. Contributed to clinical practice guidelines development (European level). Participated in the COURAGE Trial.
<b>Heather Hadjistavropoulos</b> , PhD, Professor of Psychology	University of Regina, CA	Quality of healthcare across the continuum of care including integrated care pathways. Developed the HCCQ. <sup>19</sup>
<b>Ann Dorthe Zwisler</b> , MD, PhD, Professor of Medicine	University of Odense, DK	Experience in programs of health and morbidity, rehabilitation and palliative programs.
<b>Rikke Sogaard</b> , MSc, MPH, PhD, Professor of Health economics	Aarhus University, DK	Econometric modelling for policy evaluation, and preference elicitation, and use of standardised measures for costs and outcomes measurement.

**Table II. The Expert Group of regional, national and international collaborators of CONCARD<sup>PCI</sup>**

Collaborators	Institution	Expertise
<b>Torbjørn Aasen</b> , Patient representative	The Norwegian Heart and Lung Patient Organisation	Experience from peer support.
<b>Bjørn Bendz</b> , MD, PhD. Associate professor, Head ICCU, interventional cardiologist	Oslo University Hospital, and University of Oslo	Experienced interventional cardiologist with his latest research on the oldest old and PCI. <sup>35</sup>
<b>Cathrine Bjorvatn</b> , RN, MSc, PhD, Associate professor, Head Learning and Mastery Services at Bergen Health Trust	Haukeland University Hospital, and University of Bergen	Chair of Network on Learning and Mastery including all three levels of healthcare; 24 municipalities as well as Haraldsplass Deaconess Hospital, and Haukeland University Hospital.
<b>Ellen Blom</b> , PTH, PhD-candidate	Western Norway University of Applied Sciences, Campus Sogndal	Physiotherapist with extensive research experience from Healthy Life Centres.
<b>Gunhild Brørs</b> , RN, MSc, PhD-candidate	St. Olav University Hospital	Cardiovascular clinical nurse specialist with MSc in clinical nursing.
<b>Anne K Drange</b> , BSc, Radiographer	Askøy Municipality	Head, Health and Care Services, Askøy Municipality. Project on multidisciplinary team follow-up of patients with severe heart disease in primary care.
<b>Irene Drotningvik</b> , RN, MSc	Haukeland University Hospital	Cardiovascular clinical nurse specialist with MSc in clinical nursing. Co-leader of the Cardiac Rehabilitation Unit.
<b>Bengt Fridlund</b> , RNT, PhD, Senior Professor	Centre of Interprofessional Collaboration within Emergency care (CISE), Linnaeus University, SE	Long experience in cardiac research, supervised >50 PhD candidates, published 400 papers. PhD in one of the earliest research studies on cardiac rehabilitation.
<b>Stig Igland</b> , RN, MA, Chair of Network on Learning and Mastery Services at Førde Hospital Trust	Førde Hospital Trust	Extensive leadership and project experience from interdisciplinary rehabilitation and Learning and Mastery services across administrative levels.
<b>Alf Inge Larsen</b> , MD, PhD. Professor and interventional cardiologist.	Stavanger University Hospital and University of Bergen	Extensive experience in interventional cardiology and research leadership.
<b>Jan Erik Nordrehaug</b> , MD, PhD. Professor and interventional cardiologist	Stavanger University Hospital and University of Bergen	Built PCI network and logistics in Western Norway, >200 papers & extensive supervision.
<b>Trond Røed Pettersen</b> , RN, MSc, PhD-candidate	Haukeland University Hospital	Cardiovascular clinical nurse specialist with MSc in clinical nursing.
<b>Svein Rotevatn</b> , MD, PhD. Chair of NORIC, and interventional cardiologist	Haukeland University Hospital	Experienced interventional cardiologist and responsible for register data in CONCARD. Will be taking the lead together with Norekvål.
<b>Maj-Britt Råholm</b> , RN, MNSc, PhD, Professor	Western Norway University of Applied Sciences, Campus Førde	Clinical nurse leader and researcher, experienced in both qualitative and quantitative research methods.
<b>Jan Schjøtt</b> , MD, PhD, Professor, and senior consultant in clinical pharmacology	Haukeland University Hospital and University of Bergen	Experience in clinical pharmacology, drug information to health care professionals and patients, and pharmacovigilance.
<b>Marit Solheim</b> , RN, MA, Director Center of Health Research, Førde	Førde Hospital Trust, Western Norway University of Applied Sciences, Campus Førde	Experienced in interdisciplinary collaboration across institutions, and research across primary and secondary care levels.
<b>Rune Stiansen</b> , Patient representative	The Norwegian Heart and Lung Patient Organisation	Experience from peer support and cardiac rehabilitation.
<b>David Thompson</b> , RN, PhD, Professor	Queens University, Belfast, UK	Expert in developing disease-specific PRO measures <sup>54</sup> , and novel psychosocial interventions.
<b>Irene Valaker</b> , RN, MA, PhD-candidate	Western Norway University of Applied Sciences, Campus Førde	Cardiovascular clinical nurse specialist with MA in organizational models in cardiac care.
<b>Trine Vingsnes</b> , MD, Cardiologist and Head of Department of Medicine	Førde Hospital Trust	Extensive experience in implementation of new clinical pathways between hospitals and primary care.
<b>Tore Wentzel-Larsen</b> , MSc, Biostatistician	Haukeland University Hospital, and Eastern Southern Health Trust	Statistical advisor in close to 200 scientific papers.

**Table III. Project administration for the cohort study in CONCARD<sup>PCI</sup>**

Project administration	Institution	Role
<b>Tone M Norekvål</b> , RN, MSc, PhD, Chair PROCARD, Professor	Haukeland University Hospital, Western Norway University of Applied Sciences and University of Bergen, NO	Principal Investigator CONCARD <sup>PCI</sup>
<b>Nina Fålnun</b> , RN, MSc	Haukeland University Hospital, and Western Norway University of Applied Sciences, NO	Main project coordinator CONCARD <sup>PCI</sup> Project coordinator Norway Centre coordinator Haukeland University Hospital
<b>Tina Birgitte Hansen</b> , RN, MSc, PhD, Post doc	Zealand University Hospital, Roskilde, and University of Southern Denmark, DK	Project coordinator Denmark Local PI and Centre coordinator Zealand University Hospital Leader Project 4
<b>Irene Valaker</b> , RN, MA, PhD-candidate	Western Norway University of Applied Sciences, Campus Førde, NO	Leader Project 1
<b>Gunhild Brørs</b> , RN, MSc, PhD-candidate	St. Olav University Hospital, NO	Leader Project 2
<b>Trond Røed Pettersen</b> , RN, MSc, PhD-candidate	Haukeland University Hospital, NO	Leader Project 3
<b>Svein Rotevatn</b> , MD, PhD, Chair NORIC, interventional cardiologist	Haukeland University Hospital, NO	Co-Investigator CONCARD <sup>PCI</sup> NORIC data
<b>Kristin Rykkje</b> , RN <b>Kristin J Ramstad</b> , RN, MSc-student <b>Irene Instenes</b> , RN, MSc <b>Tom Jakobsen</b> , RN <b>Lisbeth Moldestad</b> , RN <b>Marie TN Hayes</b> , BA, MA	Haukeland University Hospital, NO	Study nurses Haukeland University Hospital  Data management, Haukeland University Hospital
<b>Alf Inge Larsen</b> , MD, PhD. Professor, interventional cardiologist.	Stavanger University Hospital and University of Bergen, NO	Local PI, Stavanger University Hospital.
<b>Mari Espedal</b> , RN, ICN <b>Peggy Elin Bjørheim</b> , RN <b>Ulrika Eva Kulling Johnsson</b> , RN <b>Karen Stødle</b> , RN	Stavanger University Hospital, NO	Study nurses Stavanger University Hospital
<b>Bjørn Bendz</b> , MD, PhD. Assoc. professor, interventional cardiologist, Head ICCU.	Oslo University Hospital, and University of Oslo, NO	Local PI, Oslo University Hospital, Rikshospitalet
<b>Rønnaug Dahlviken</b> , RN, MSc <b>Tuva Grønsund</b> , RN <b>Liv Marit Torbjørnsen</b> , RN <b>Maren Leifson</b> , RN	Oslo University Hospital, NO	Study nurses Oslo University Hospital, Rikshospitalet
<b>Trine Bernholdt Rasmussen</b> , RN, MSc, PhD, Post-doc	Herlev and Gentofte University Hospital, DK	Local PI, Herlev and Gentofte University Hospital
<b>Sofie-Amalie Kristensen</b> , RN-student <b>Margrethe Herning</b> , CNS <b>Anne Kirstine Vinther</b> , RN <b>Kristina Brehnholt Jacobsen</b> , RN	Herlev and Gentofte University Hospital, DK	Study nurses Herlev and Gentofte University Hospital
<b>Pernille Palm</b> , RN, MSc, PhD	Copenhagen University Hospital, Rigshospitalet, DK	Local PI, Copenhagen University Hospital, Rigshospitalet
<b>Signe West Christensen</b> , MSc <b>Hanne Møller Kongshavn</b> , RN	Copenhagen University Hospital, Rigshospitalet, DK	Study nurses Copenhagen University Hospital, Rigshospitalet
<b>Kirsten Charlotte Helmark</b> , RN, MSc <b>Trine Schier Morsing</b> , RN <b>Ulla Werner Hansen</b> , RN <b>Mette Busk Hansen</b> , RN <b>Helle Back Schönemann</b> , RN	Zealand University Hospital, Roskilde, DK	Study nurses Zealand University Hospital, Roskilde
<b>Carsten Toftager Larsen</b> , MD, PhD, Head of the cardiac invasive laboratory	Zealand University Hospital, Roskilde, DK	Registry data
<b>Britt Borregaard</b> , RN, MSc, PhD-candidate	Odense University Hospital, DK	Local PI, Odense University Hospital
<b>Astrid Trangbæk</b> , RN	Odense University Hospital, DK	Study nurse Odense University Hospital



**Figure I. Project organisation of the CONCARD<sup>PCI</sup> cohort study**

Abbreviations: HGH: Herlev and Gentofte University Hospital, Copenhagen, Denmark; HUS: Haukeland University Hospital, Bergen, Norway; OUH: Odense University Hospital, Odense, Denmark; RH<sup>Cph</sup>: Copenhagen University Hospital, Rigshospitalet, Copenhagen, Denmark; RH<sup>Osl</sup>: Oslo University Hospital, Rikshospitalet, Oslo, Norway; SUS: Stavanger University Hospital, Stavanger, Norway; ZUH: Zealand University Hospital, Roskilde, Denmark.