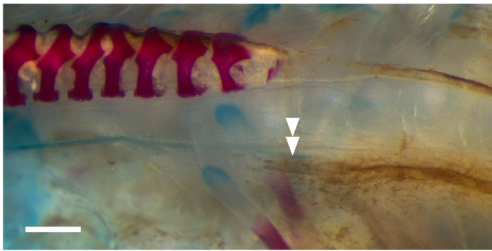
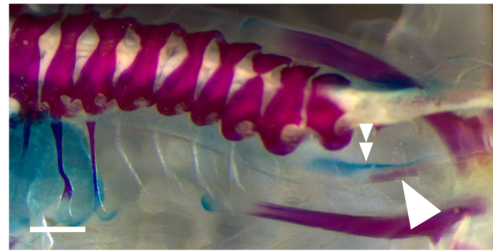


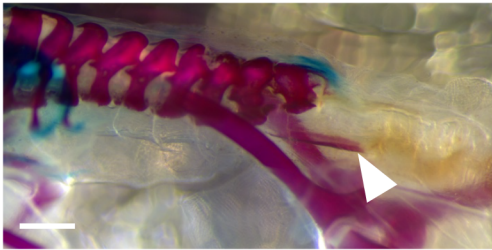
A. $TR\alpha^{+/+} TR\beta^{+/+}$
stage 58



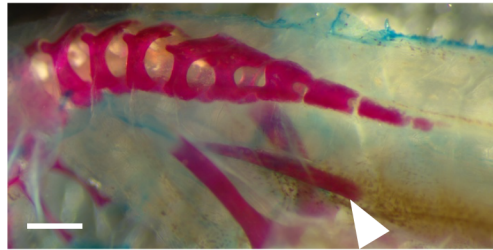
B. $TR\alpha^{+/+} TR\beta^{+/+}$
stage 62



C. $TR\alpha^{+/+} TR\beta^{+/+}$
stage 63



D. $TR\alpha^{-/-} TR\beta^{-/-}$
stage 58



Supplemental figure 2. $TR\alpha^{-/-}TR\beta^{-/-}$ tadpoles have premature and increased hypochord ossification at stage 58.

Representative photo of Alizarin red (for ossification) and Alcian blue (for cartilages) whole mount staining of $TR\alpha^{+/+}TR\beta^{+/+}$ tadpoles (A) stage 58, (B) stage 62 and (C) stage 63; and a $TR\alpha^{-/-}TR\beta^{-/-}$ tadpole at stage 58. Arrowheads: hypochord. Double-arrowheads: Notochord. Bars: 1 mm.