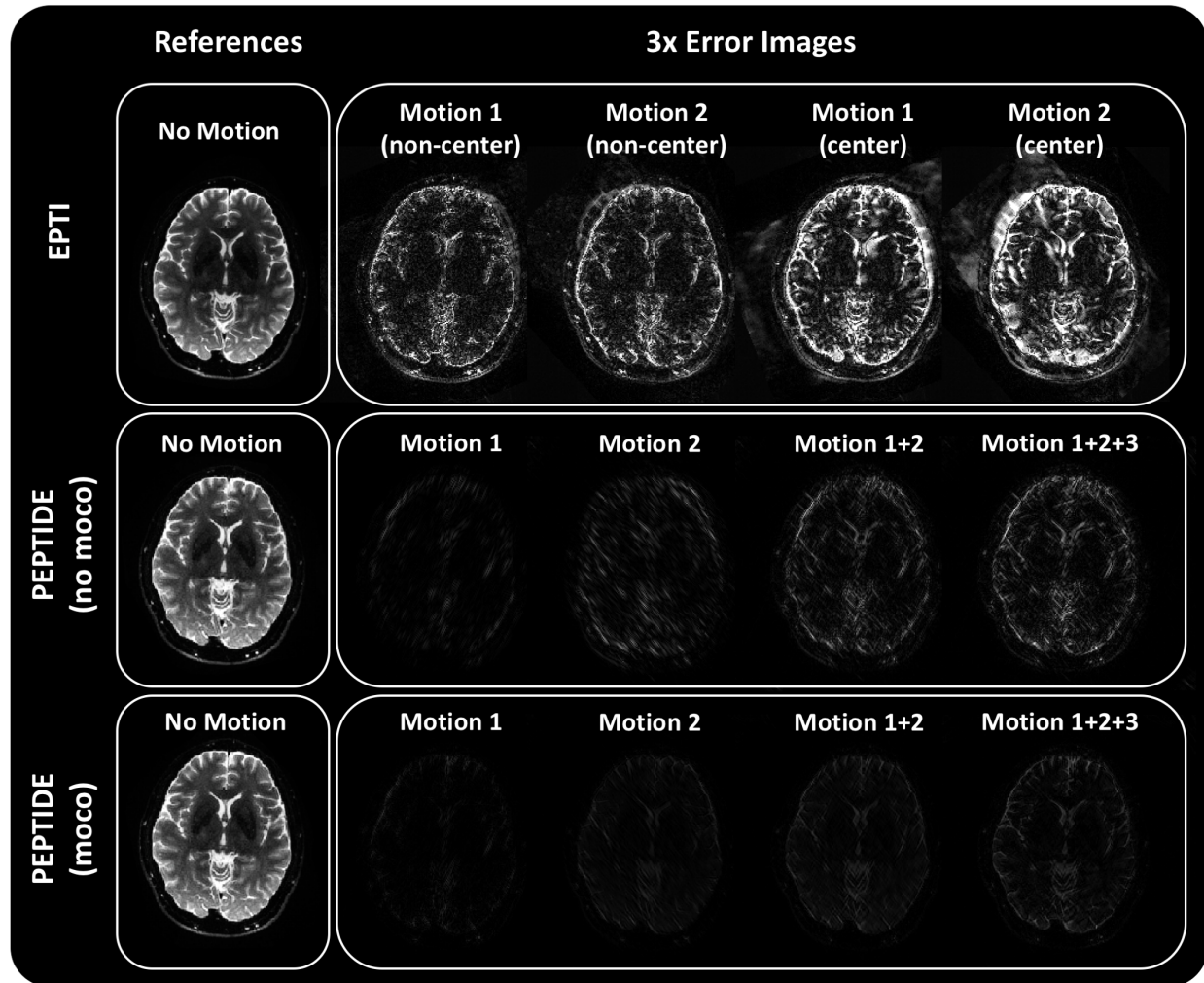
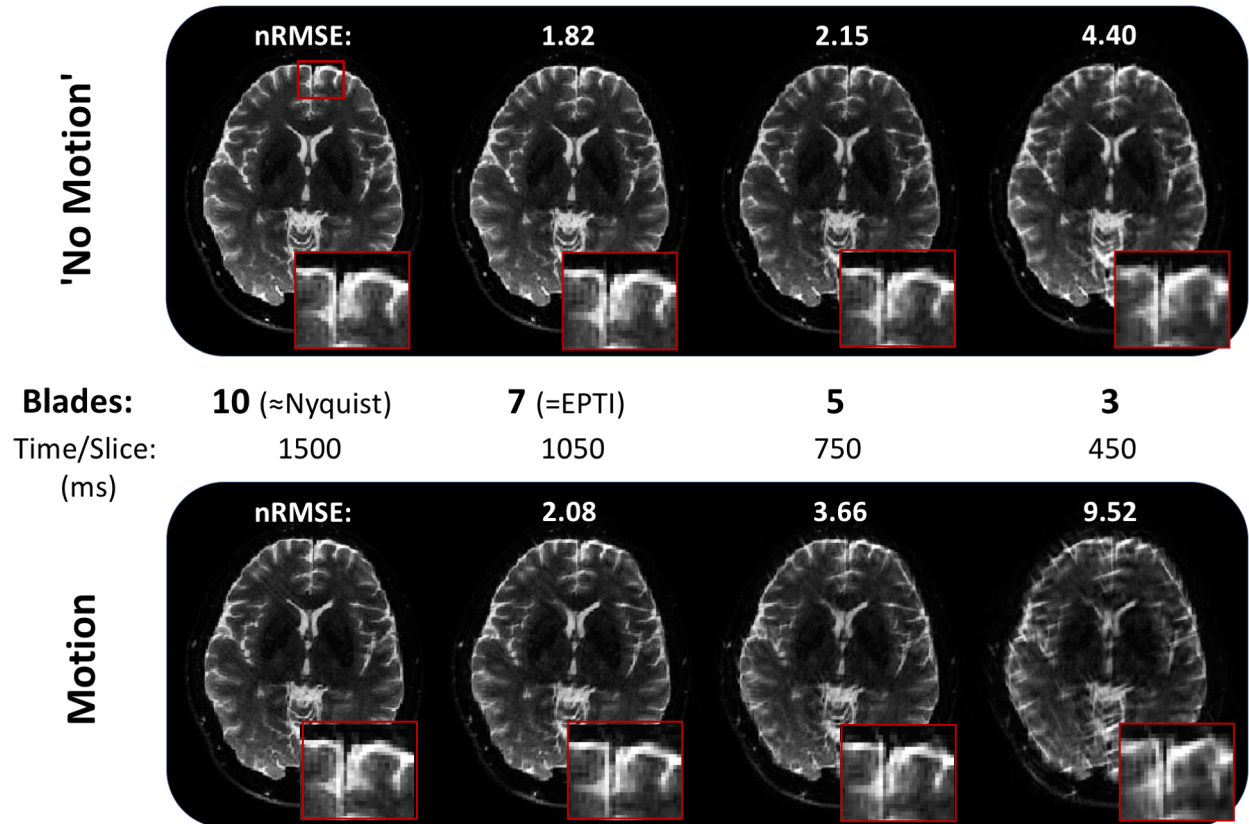


Propeller Echo-Planar Time-resolved Imaging with Dynamic Encoding (PEPTIDE) - Supporting Information



Supporting Information Figure S1 – Difference Images for Figure 8. Error maps (3x intensity) are shown for the various retrospective motion cases, matching Figure 8, for EPTI, PEPTIDE without motion correction (moco) and PEPTIDE with moco. These are comparative to their non-motion cases (left).



Supporting Information Figure S2 – PEPTIDE blade undersampling. The PEPTIDE reconstruction is shown for decreasing numbers of blades, both with and without motion. $N=10$ is approximately equivalent to full sampling post-gridding, $N=7$ is equivalent to the number of blades required by the equivalent EPTI sequence, while the lower blade numbers correspond to increased acquisition acceleration.