

Supplementary Figure 1: Uncropped scans with molecular weight indications

Fig. 2c,f: Same membranes are indicated by a black dashed box, and the cropped area is indicated by a red box. Membrane was cut (indicated by a blue, dashed line), and the membranes were co-incubated with goat-anti-mouse IgG-Alexa Fluor 680 and goat-anti-rabbit IgG-IRDye 800CW secondary antibodies.

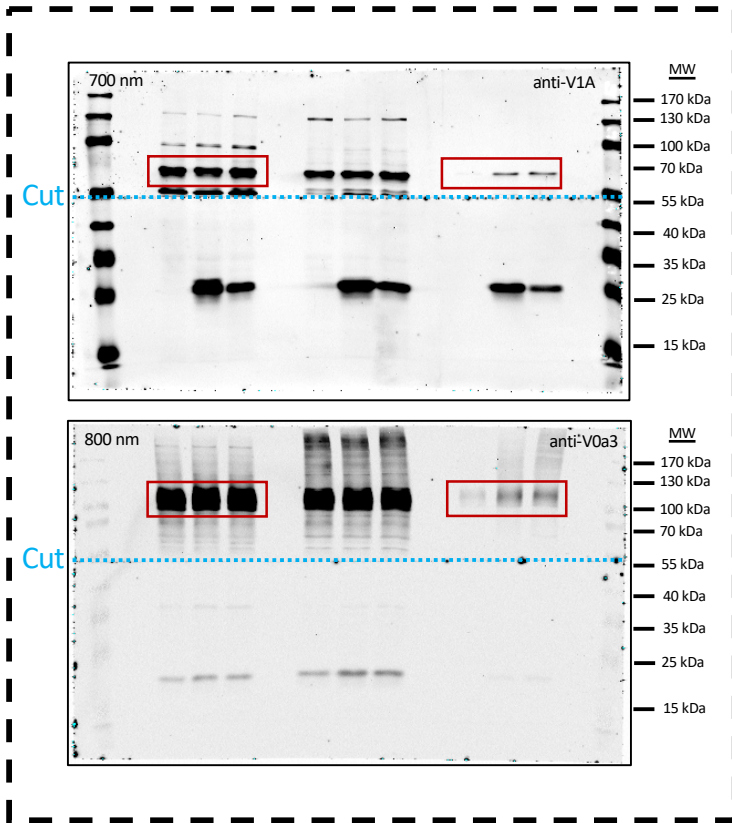


Fig. 3b: The cropped area is indicated by a red box. The membrane was cut (indicated by a blue, dashed line) and incubated with goat-anti-mouse IgG-Alexa Fluor 680 secondary antibody.

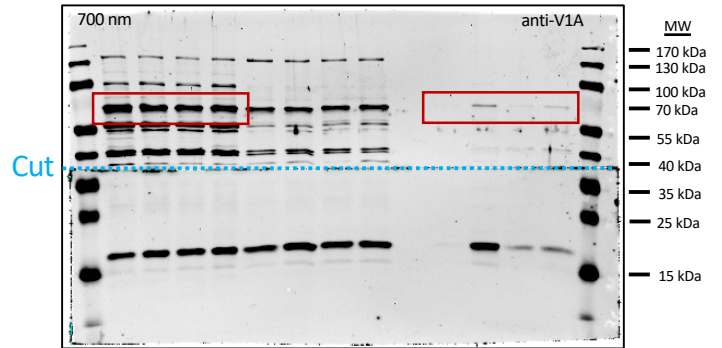


Fig. 4c: Same membranes are indicated by a black dashed box, and the cropped area is indicated by a red box. Membrane was cut (indicated by a blue, dashed line), and the membranes were incubated with goat-anti-mouse IgG-Alexa Fluor 680 or goat-anti-rabbit IgG-IRDye 800CW secondary antibodies.

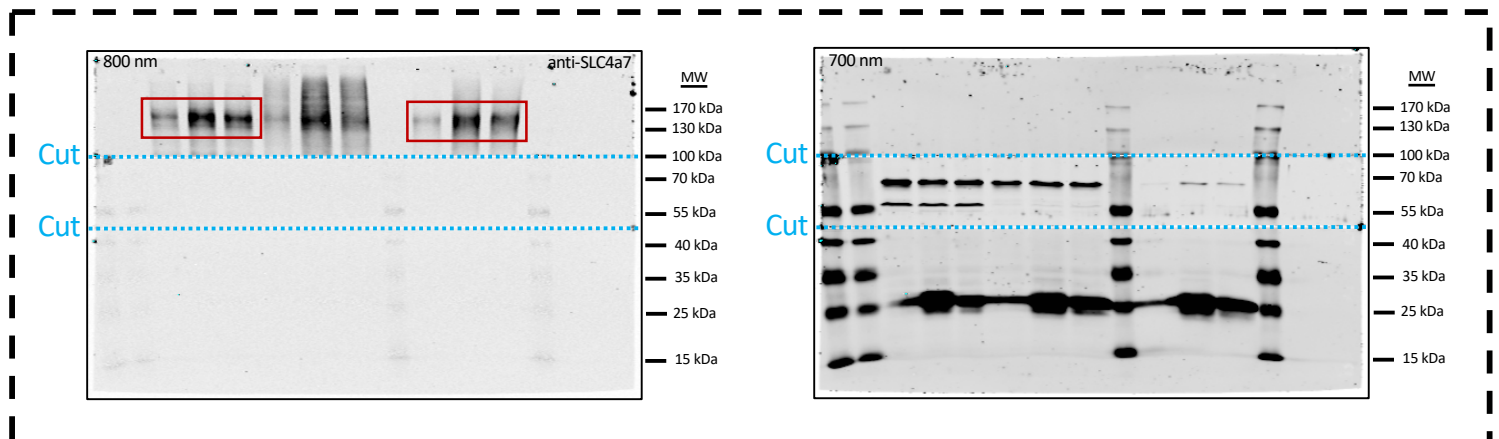


Fig. 4d: Same membranes are indicated by a black dashed box, and the cropped area is indicated by a red box. Membranes were cut (indicated by a blue, dashed line), and the membranes were incubated with goat-anti-mouse IgG-Alexa Fluor 680 or goat-anti-rabbit IgG-IRDye 800CW secondary antibodies.

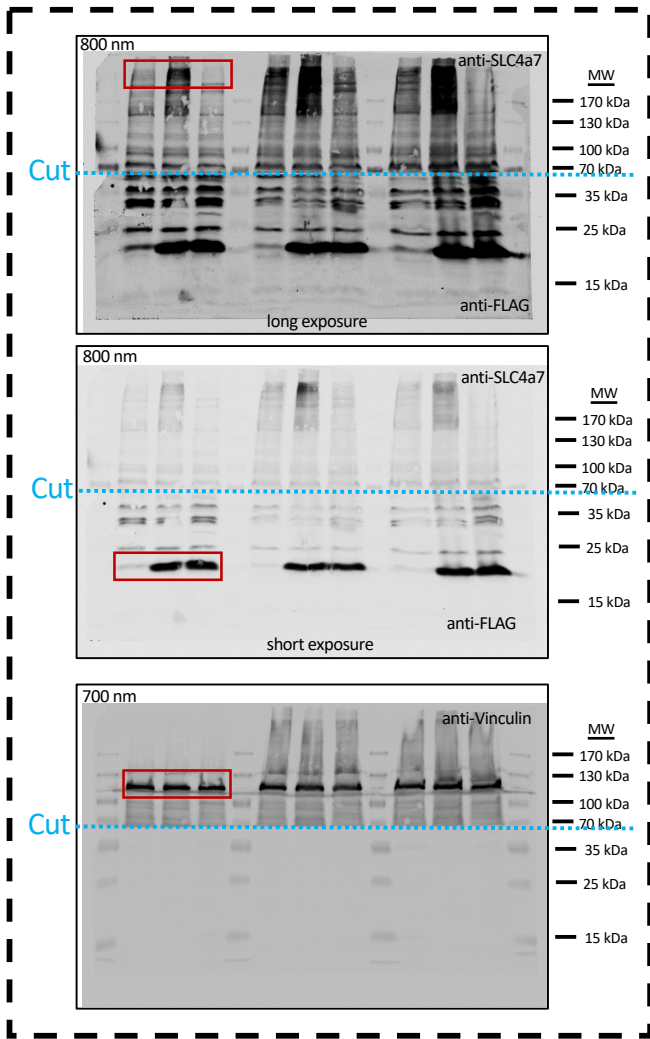
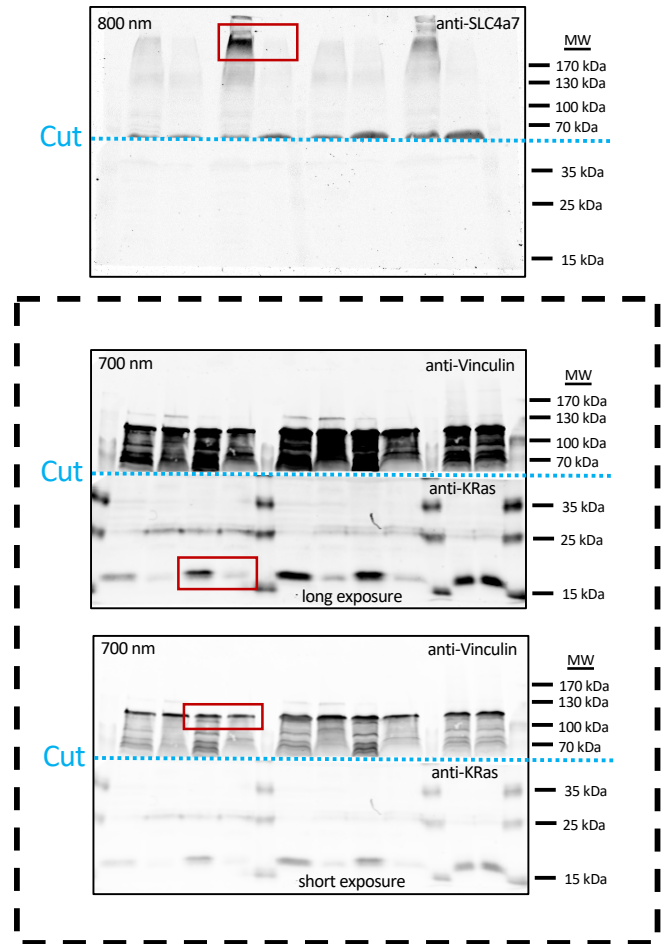
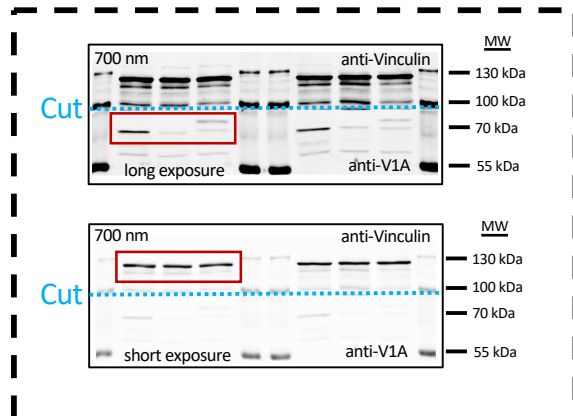


Fig. 4f: Same membranes are indicated by a black dashed box, and the cropped area is indicated by a red box. Membranes were cut (indicated by a blue, dashed line), and the membranes were incubated with goat-anti-mouse IgG-Alexa Fluor 680 or goat-anti-rabbit IgG-IRDye 800CW secondary antibodies.

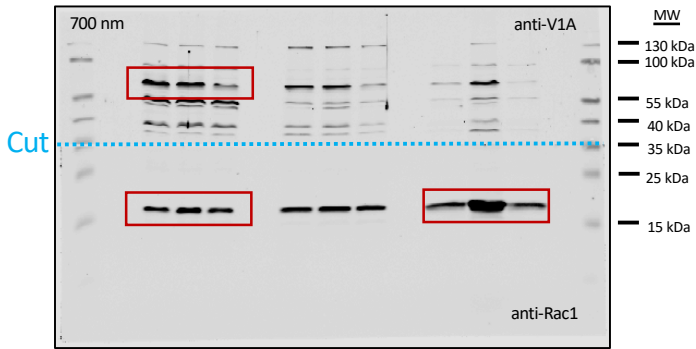


Extended Data Fig. 1c: Same membranes are indicated by a black dashed box, and the cropped area is indicated by a red box. The membrane was cut (indicated by a blue, dashed line) and incubated with goat-anti-mouse IgG-Alexa Fluor 680 secondary antibody.

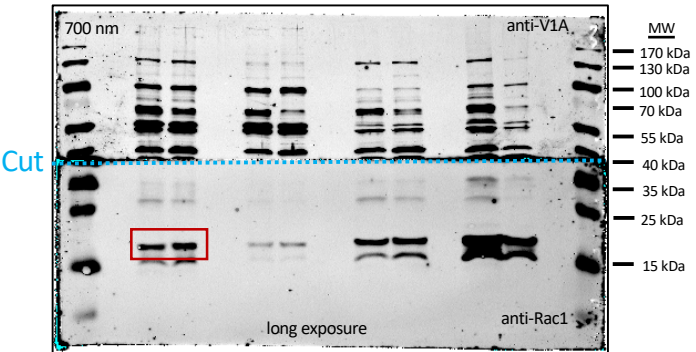


Extended Data Fig. 1g: Same membranes are indicated by a black dashed box, and the cropped area is indicated by a red box. The membrane was cut (indicated by a blue, dashed line) and incubated with goat-anti-mouse IgG-Alexa Fluor 680 secondary antibody.

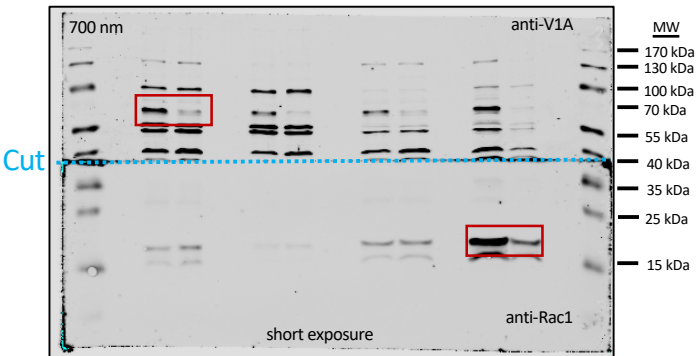
HeLa Blot



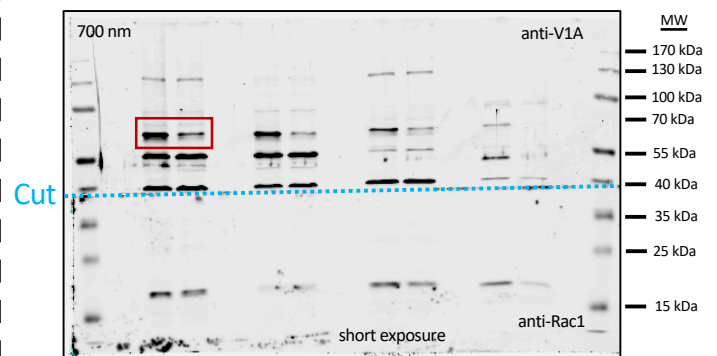
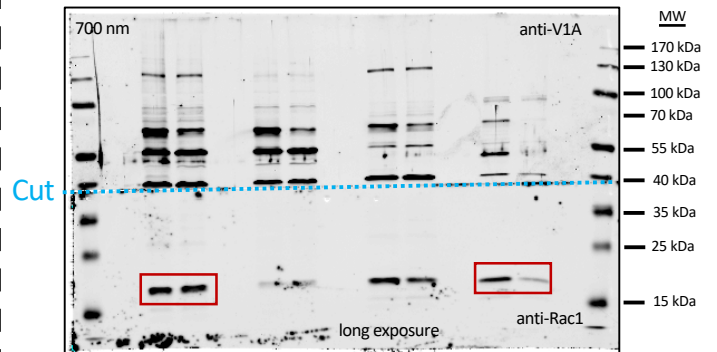
Panc1 Blot



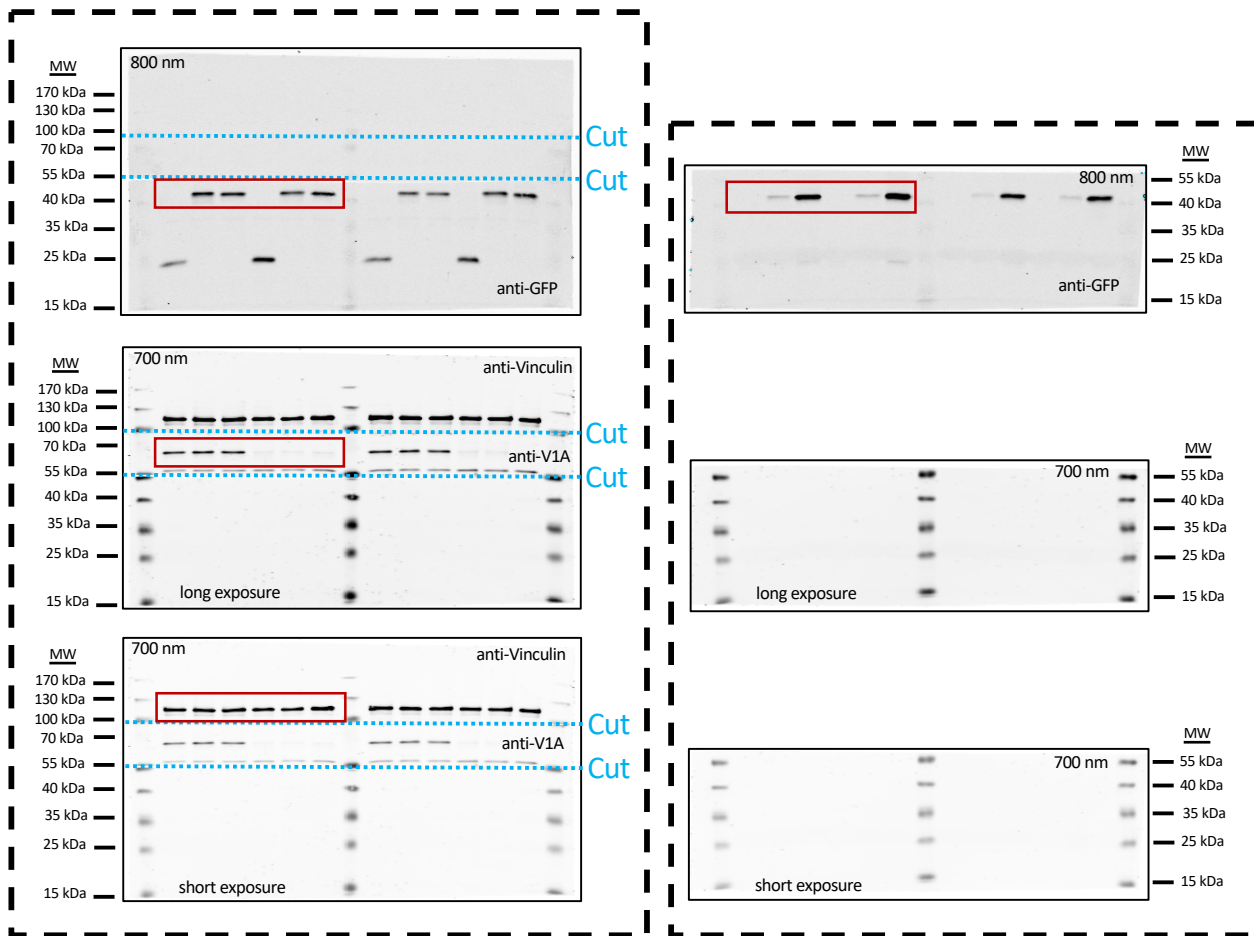
Panc1 Blot



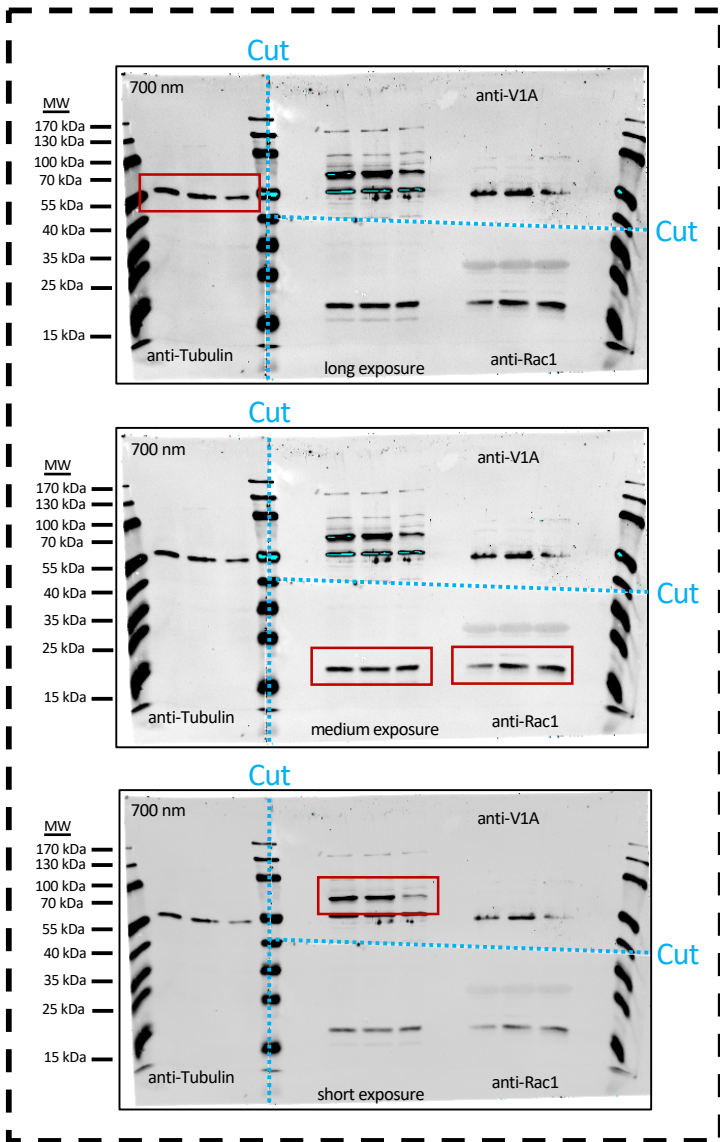
DLD1 Blot



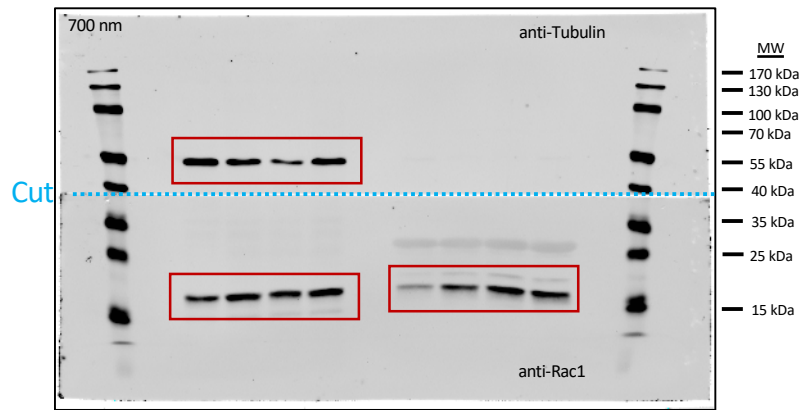
Extended Data Fig. 2a: Same membranes are indicated by a black dashed box, and the cropped area is indicated by a red box. Membrane was cut (indicated by a blue, dashed line), and the membranes were incubated with goat-anti-mouse IgG-Alexa Fluor 680 or goat-anti-rabbit IgG-IRDye 800CW secondary antibodies.



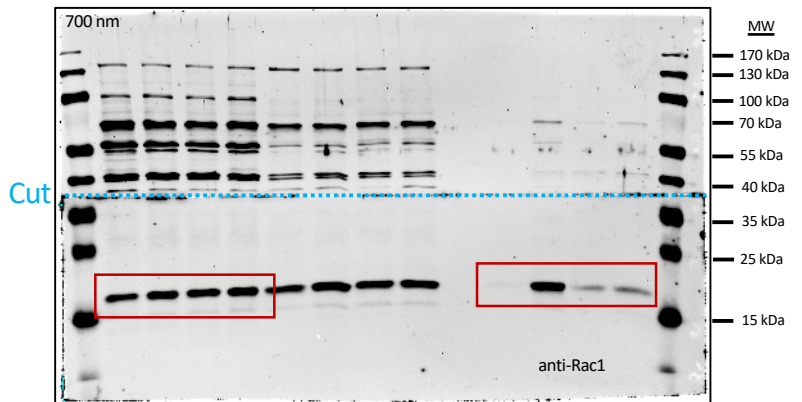
Extended Data Fig. 2b: Same membranes are indicated by a black dashed box, and the cropped area is indicated by a red box. The membrane was cut (indicated by a blue, dashed line) and incubated with goat-anti-mouse IgG-Alexa Fluor 680 secondary antibody.



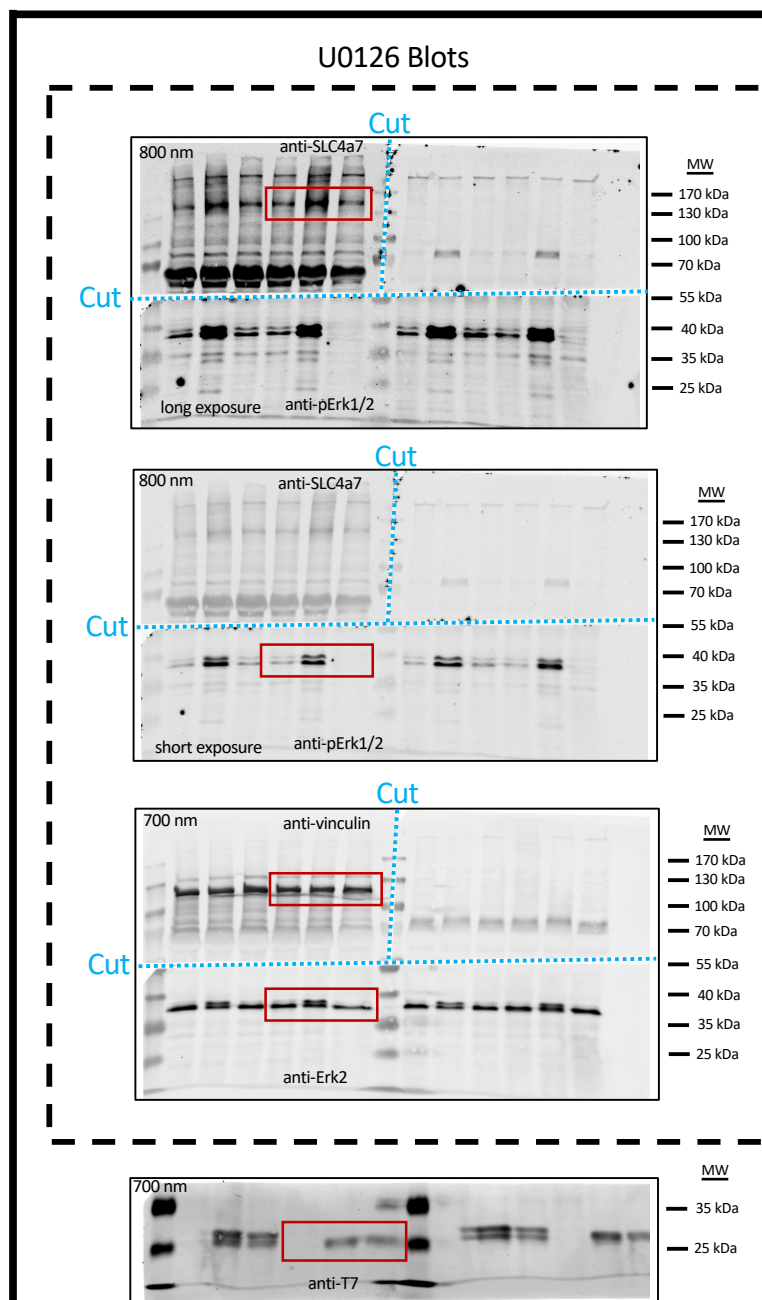
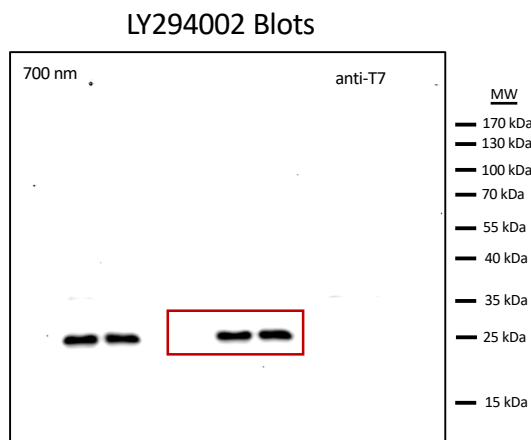
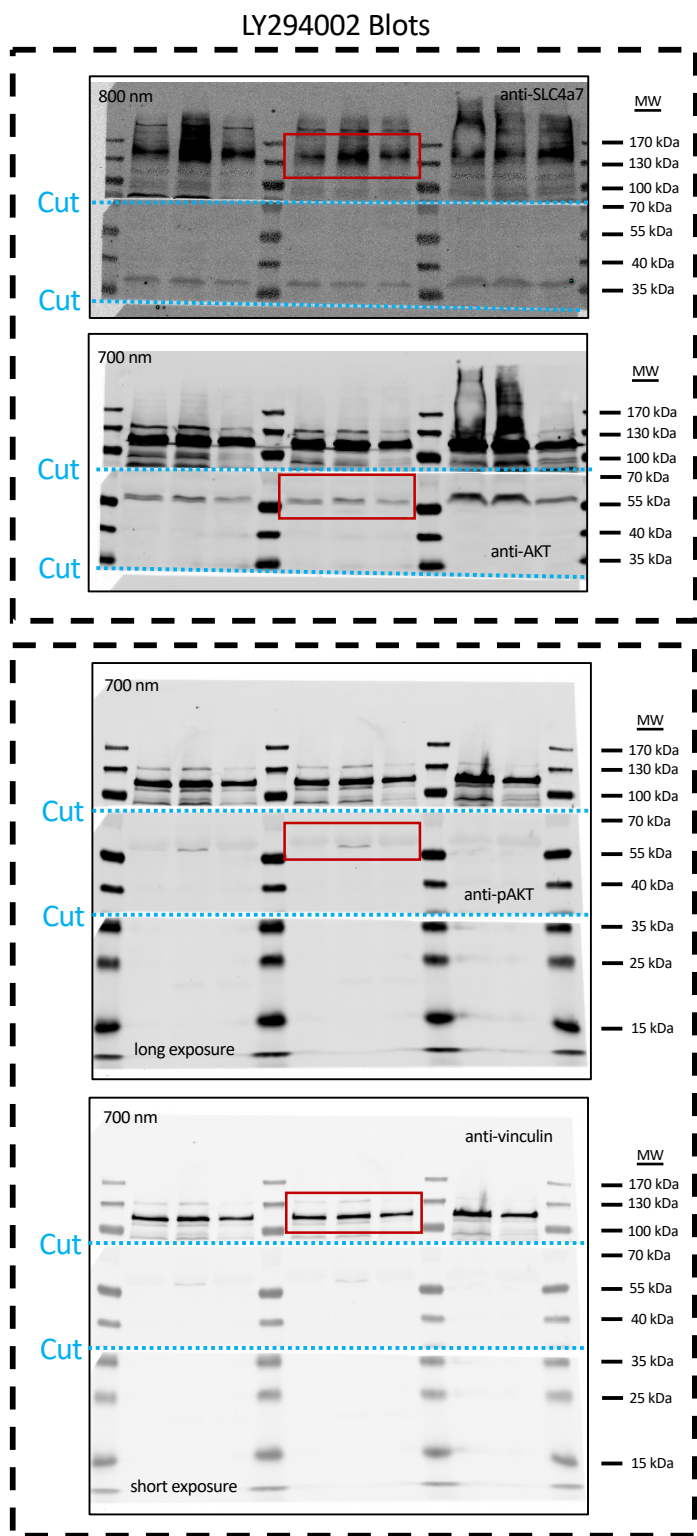
Extended Data Fig. 5c: The cropped area is indicated by a red box. The membrane was cut (indicated by a blue, dashed line) and incubated with goat-anti-mouse IgG-Alexa Fluor 680 secondary antibody.



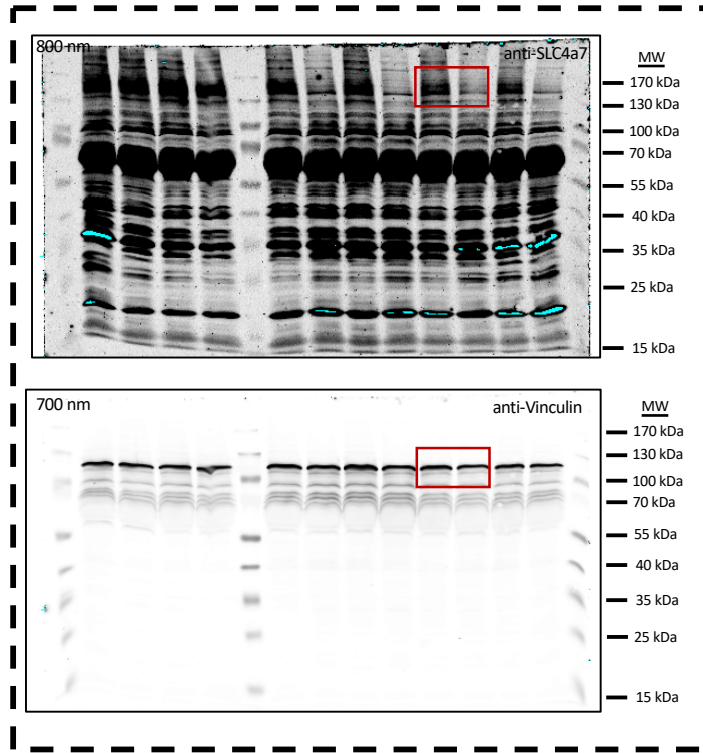
Extended Data Fig. 5d: The cropped area is indicated by a red box. The membrane was cut (indicated by a blue, dashed line) and incubated with goat-anti-mouse IgG-Alexa Fluor 680 secondary antibody.



Extended Data Fig. 7j: Same membranes are indicated by a black, dashed box, and the cropped area is indicated by a red box. Membranes were cut (indicated by a blue, dashed line), and the membranes were incubated with goat-anti-mouse IgG-Alexa Fluor 680 and or goat-anti-rabbit IgG-IRDye 800CW secondary antibodies.



Extended Data Fig. 7l: Same membranes are indicated by a black dashed box, and the cropped area is indicated by a red box. The membranes were co-incubated with goat-anti-mouse IgG-Alexa Fluor 680 and goat-anti-rabbit IgG-IRDye 800CW secondary antibodies.



Extended Data Fig. 7m: Same membranes are indicated by a black dashed box, and the cropped area is indicated by a red box. Membrane was cut (indicated by a blue, dashed line), and the membranes were co-incubated with goat-anti-mouse IgG-Alexa Fluor 680 and goat-anti-rabbit IgG-IRDye 800CW secondary antibodies.

