

Table 1. qPCR primers

Gene	Forward primer (5'→3')	Reverse primer (5'→3')
Rpl32	AAGCGAAACTGGCGGAAAC	TAACCGATGTTGGGCATCAG
Muc1	TACCCTACCTACCACACTCACG	CTGCTACTGCCATTACCTGC
Muc3	CTTCCAGCCTTCCCTAAACC	TCCACAGATCCATGCAAAAC
Muc5ac	ATCTTTCAGGACCCCTGCTC	ATGGACCACTGGCGTTAGTC
Muc13	CAACTCAGCCTTCTGGTGGT	TACAGGGGTTAGGGTTGCAG
Muc20	CAACATCTGCATCCACTGCT	GTCAGCCGTACAAGGAGGAA
UNI 16S	ACTCCTACGGGAGGCAGCAGT	ATTACCGCGGCTGCTGGC
<i>F. PB1 16S</i>	CCGGGAATACGCTCTGGAAA	GCCAACCAACTAATGCACCG
<i>H. biformis</i>	GCTAAGGCCATGAACATGGA	GCCGTCTCTTCTGTTCTC
<i>L. lactis</i>	GCCGTCCTCTTCTGTTCTC	CATTGTGGTTCACCGTTC

Table 2. Colitis histological scoring system

Colitis grade	Description
0	Normal colonic mucosa
1	Minimal inflammation restricted to the mucosa and only slightly expanding the lamina propria among crypts or between crypts and <i>muscularis mucosae</i> .
2	Mild to moderate (usually focal) inflammation in the mucosa with shortening of the crypts and occasionally mildly extending to the submucosa (usually associated with small ulcers)
3	Moderate to severe (multifocal to diffuse) inflammation involving the mucosa with shortening or loss of the crypts and moderately to markedly extending into the submucosa and occasionally into the <i>tunica muscularis</i> (usually associated with large ulcers)
4	Severe transmural inflammation involving the mucosa, submucosa, <i>tunica muscularis</i> , and subserosa (usually associated with diffuse ulceration).

Table 3. FACS antibodies

Antigen	Fluorophore	Clone	Cat.number	Supplier	Dilution
CD16/32	unconjugated	93	14-0161-82	Ebiosciences	1:50
CD45.2	V450	104	560697	BD biosciences	1:200
CD3	PE-Cy7	145-2C11	552774	BD biosciences	1:200
CD4	FITC	RM4-5	553047	BD biosciences	1:200
CD25	APC-Cy7	PC61	102026	Biologend	1:200
FoxP3	PE	FJK-16s	12-5773-82	Ebiosciences	1:100
Helios	Alexa-fluor647	22F6	51-9883-82	Ebiosciences	1:100
IL17	PE	TC11-18H10	559502	BD biosciences	1:100
IFN γ	APC	XMG1.2	554413	BD biosciences	1:100
Ly6G	APC	1A8	560599	BD biosciences	1:200
Ly6G	APC-Cy7	1A8	127624	Biologend	1:200
Ly6C	FITC	AL-21	553104	BD biosciences	1:200
F4/80	APC	BM8	17-4801-82	Ebiosciences	1:200
CD11b	PerCP- Cy5.5	M1/70	550993	BD Biosciences	1:200
CD11c	BV650	N418	117339	Biologend	1:200
Fixable viability stain	510	-	564406	BD Biosciences	1:1000

Flow Cytometry. Gating strategy

Fig. 3a - Extended data Fig. 3a-d-e

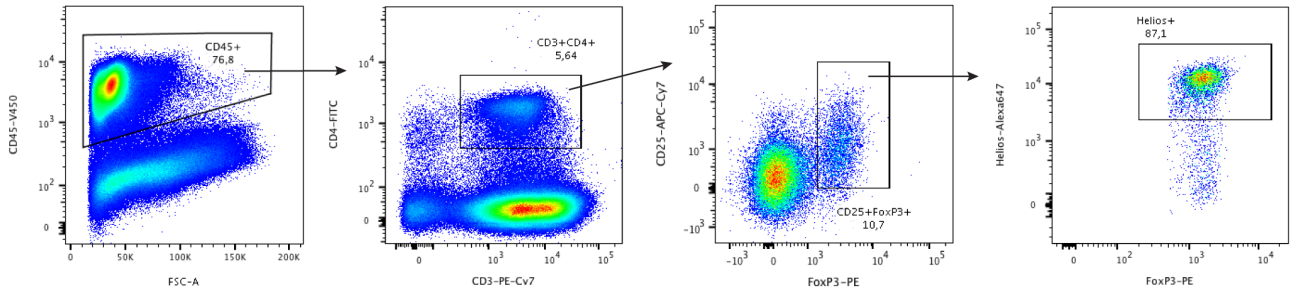
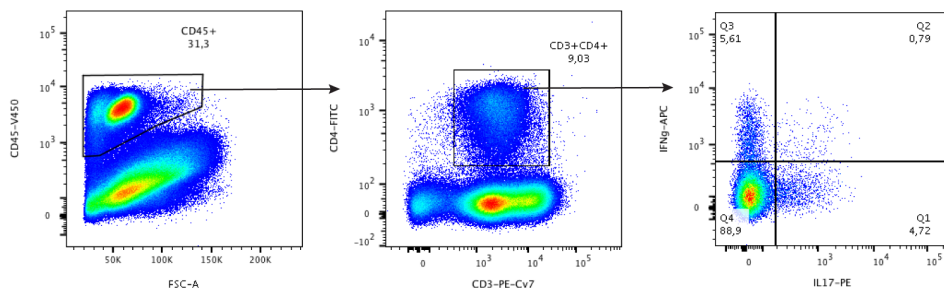


Fig. 3a - Extended data Fig. 3b-c-d-e



Extended data Fig. 3f-g

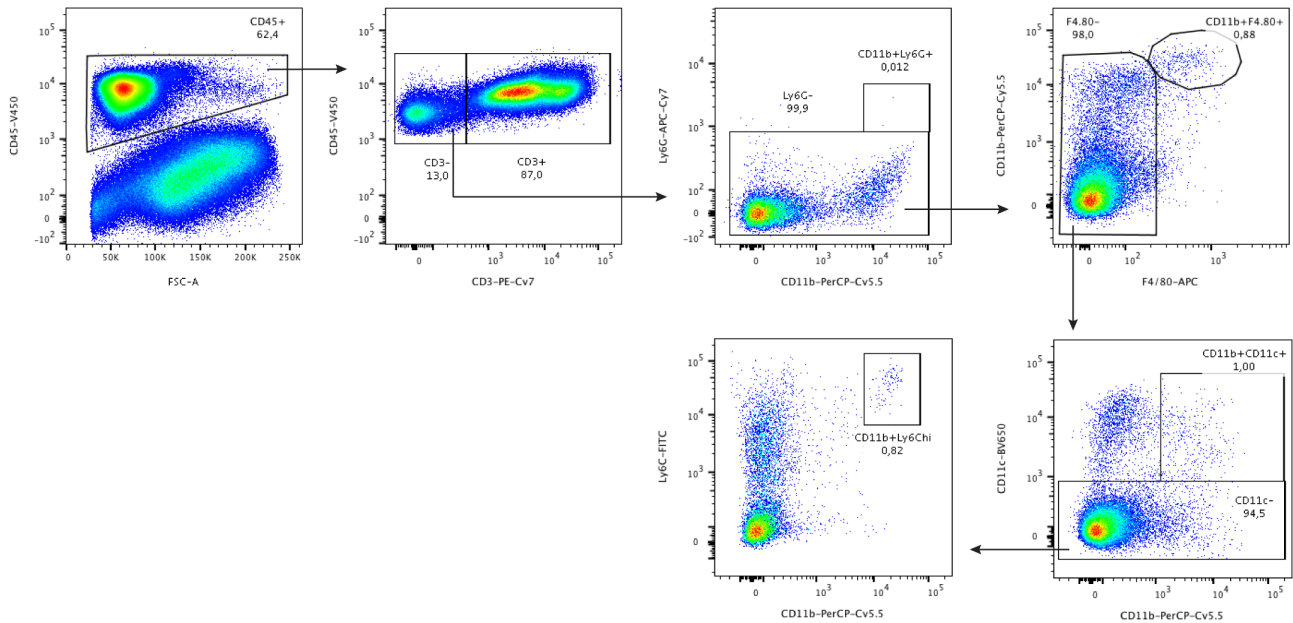


Fig. 3b - Extended data Fig. 3h

