

Supplementary Material

PET imaging of medulloblastoma with an ^{18}F -labeled tryptophan analogue in a transgenic mouse model

Yangchun Xin^{1,*}, Xuyi Yue^{1,*}, Hua Li¹, Zhiqin Li², Hancheng Cai³, Arabinda K. Choudhary⁴, Shaohui Zhang¹, Diane C. Chugani^{1,5}, and Sigrid A. Langhans^{2,#}

¹Katzin Diagnostic & Research PET/MR Center, Nemours/Alfred I. duPont Hospital for Children, Wilmington, DE 19803, USA; ²Nemours Center for Childhood Cancer Research, Nemours/Alfred I. duPont Hospital for Children, Wilmington, DE 19803, USA; ³Mayo Clinic, 4500 San Pablo Road, Jacksonville, FL 32224, USA; ⁴Department of Radiology, Nemours/Alfred I. duPont Hospital for Children, Wilmington, DE 19803;

⁵Communication Sciences and Disorders Program, College of Health Sciences, University of Delaware, Newark, DE 19713.

*These authors contributed equally.

Present address:

AKC – University of Arkansas for Medical Sciences, Little Rock, AR 72205

DCC – University of Delaware, Newark, DE 19713

SZ – Progenics Pharmaceuticals Inc., New York, NY 10007

#Corresponding Author:

Sigrid A. Langhans, PhD, Nemours/Alfred I. duPont Hospital for Children, DuPont Experimental Station, Bldg 400, #4414; 200 Powder Mill Road, Wilmington, DE 19803, E-mail: Sigrid.Langhans@nemours.org, Phone: 302-651-6538, Fax: 302-651-4827

This file contains Supplementary Figures S1-S4

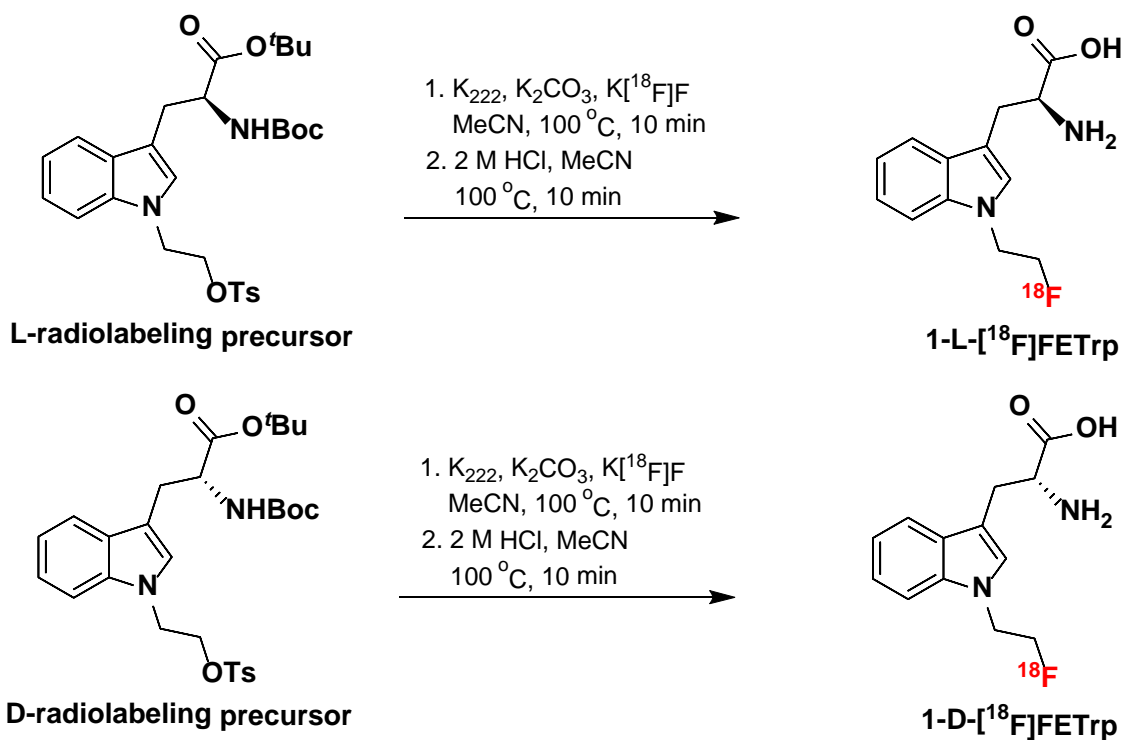


Figure S1. Radiolabeling of 1-L-[^{18}F]FETrp and 1-D-[^{18}F]FETrp.

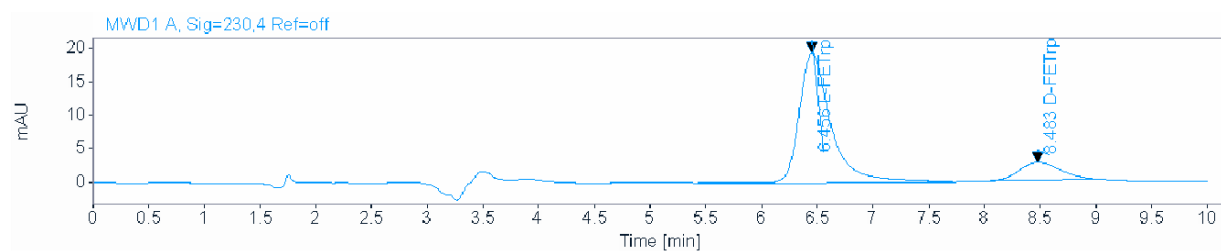


Figure S2. Representative analytical HPLC ultraviolet chromatogram of the L-FETrp and D-FETrp nonradioactive mixture. HPLC conditions: Astec CHIROBIOTIC™ T Chiral column (5 μm , 250×4.6 mm), EtOH in water (7/3, v/v), flow rate at 1 mL/min, UV detection wavelength at 230 nm. Retention time: L-FETrp, 6.5 min; D-FETrp, 8.5 min.

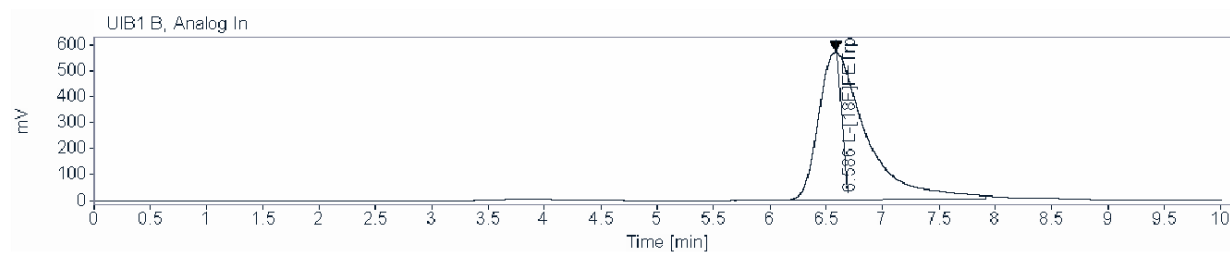


Figure S3. Representative analytical HPLC radioactive chromatogram of the purified 1-L- [¹⁸F]FETrp. HPLC conditions: Astec CHIROBIOTIC™ T Chiral column (5 μm, 250 × 4.6 mm), EtOH in water (7/3, v/v), flow rate at 1 mL/min.

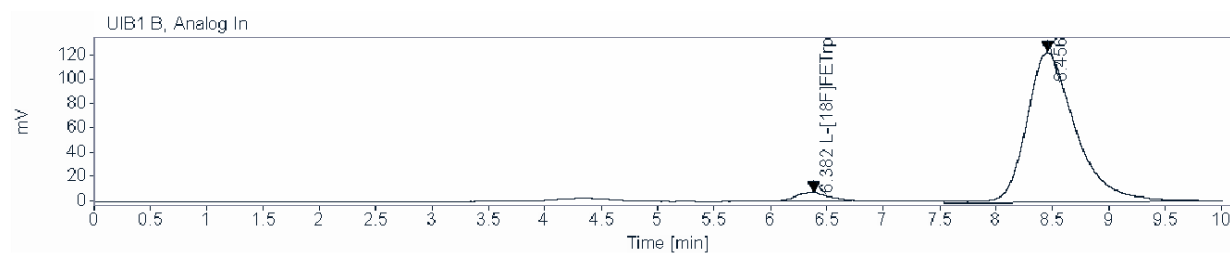


Figure S4. Representative analytical HPLC radioactive chromatogram of the purified 1-D- [¹⁸F]FETrp. HPLC conditions: Astec CHIROBIOTIC™ T Chiral column (5 μm, 250 × 4.6 mm), EtOH in water (7/3, v/v), flow rate at 1 mL/min.