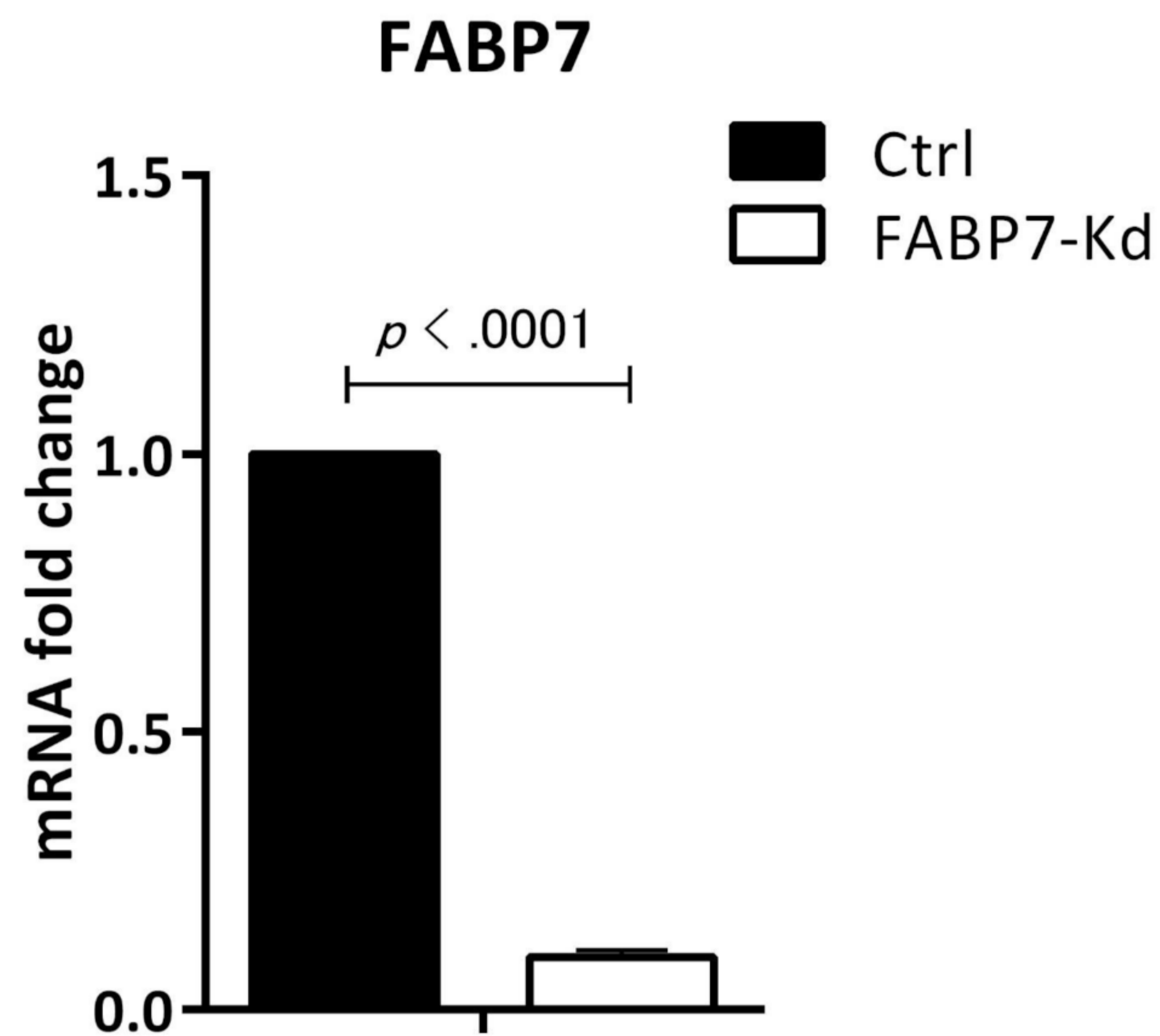


Fig. S4



The expression of FABP7 in control cells and FABP7-knock down cells are shown. Student *t*-test was carried out test the difference. Real-time PCR was performed on a 7900HT Fast Real Time PCR System (Applied Biosystems) using the comparative threshold cycle method. Expression data were normalized to the expression of the two control genes: ACTB and HPRT1. Primer sequences were follows; ACTB forward: ATTGGCAATGAGCGGTTC; ACTB reverse: GGATGCCACAGGACTCCAT; HPRT1 forward: CCAGTCAACAGGGGACATAAA; HPRT1 reverse: CACAATCAAGACATTCTTTCCAGT; FABP7 forward: TGAAACCACTGCAGATGATAGAA; FABP7 reverse: TTTCTTTGCCATCCCATTTC.