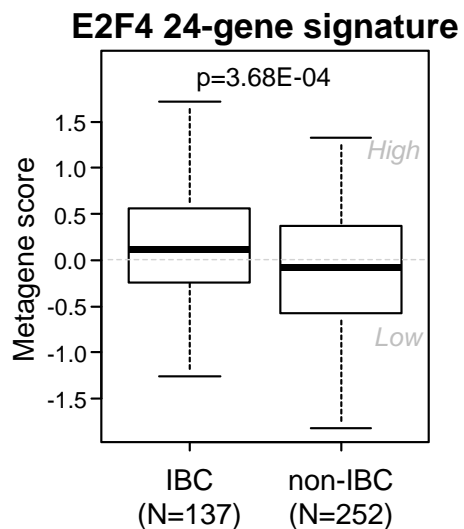


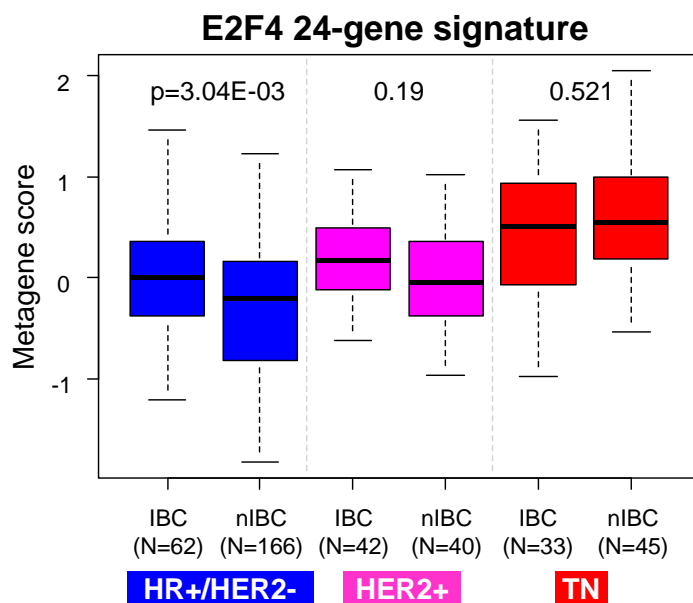
A



	N	IBC	non-IBC	p-value	Statistic
E2F4 24-g signature				5.93E-03	0.55
low	196	56 (41%)	140 (56%)		[0.35-0.86]
high	193	81 (59%)	112 (44%)		

IBC vs. non-IBC, glm	N	Multivariate OddsRatio [CI95]	pvalue
E2F4 24-g signature	384	0.659 [0.46-0.942]	5.50E-02
Subtype, HER2+ vs. HR+/HER2-	384	0.632 [0.36-1.11]	0.178
TN vs. HR+/HER2-	384	0.868 [0.473-1.59]	0.702
AJCC stage, III-IV vs. I-II	384	2.2E-09 [0e+00-Inf]	0.981

B



	N	IBC	non-IBC	p-value	Statistic
<b>HR+/HER2-</b> E2F4 24-g signature				3.35E-02	0.52
<b>HR+/HER2-</b> low	140	31 (50%)	109 (66%)		[0.28-0.99]
<b>HR+/HER2-</b> high	88	31 (50%)	57 (34%)		
<b>HER2+</b> E2F4 24-g signature				0.267	0.56
<b>HER2+</b> low	37	16 (38%)	21 (52%)		[0.21-1.46]
<b>HER2+</b> high	45	26 (62%)	19 (48%)		
<b>TN</b> E2F4 24-g signature				0.588	1.5
<b>TN</b> low	18	9 (27%)	9 (20%)		[0.45-4.95]
<b>TN</b> high	60	24 (73%)	36 (80%)		