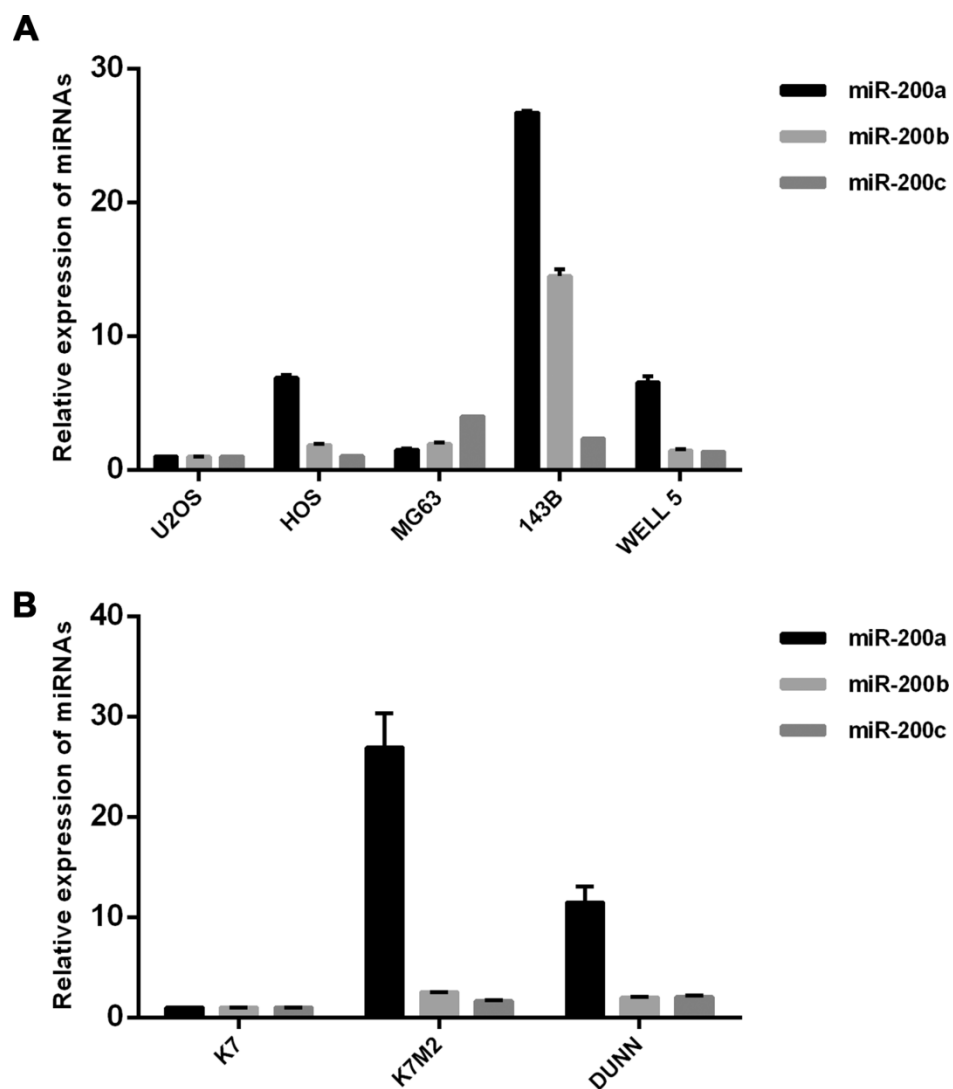
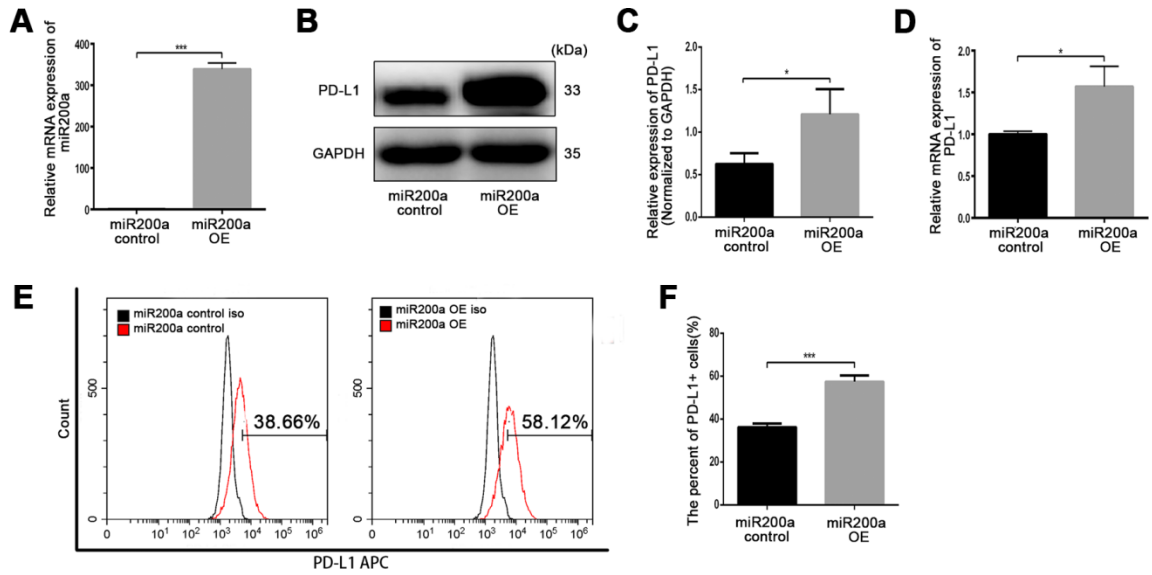


SUPPLEMENTARY FIGURES

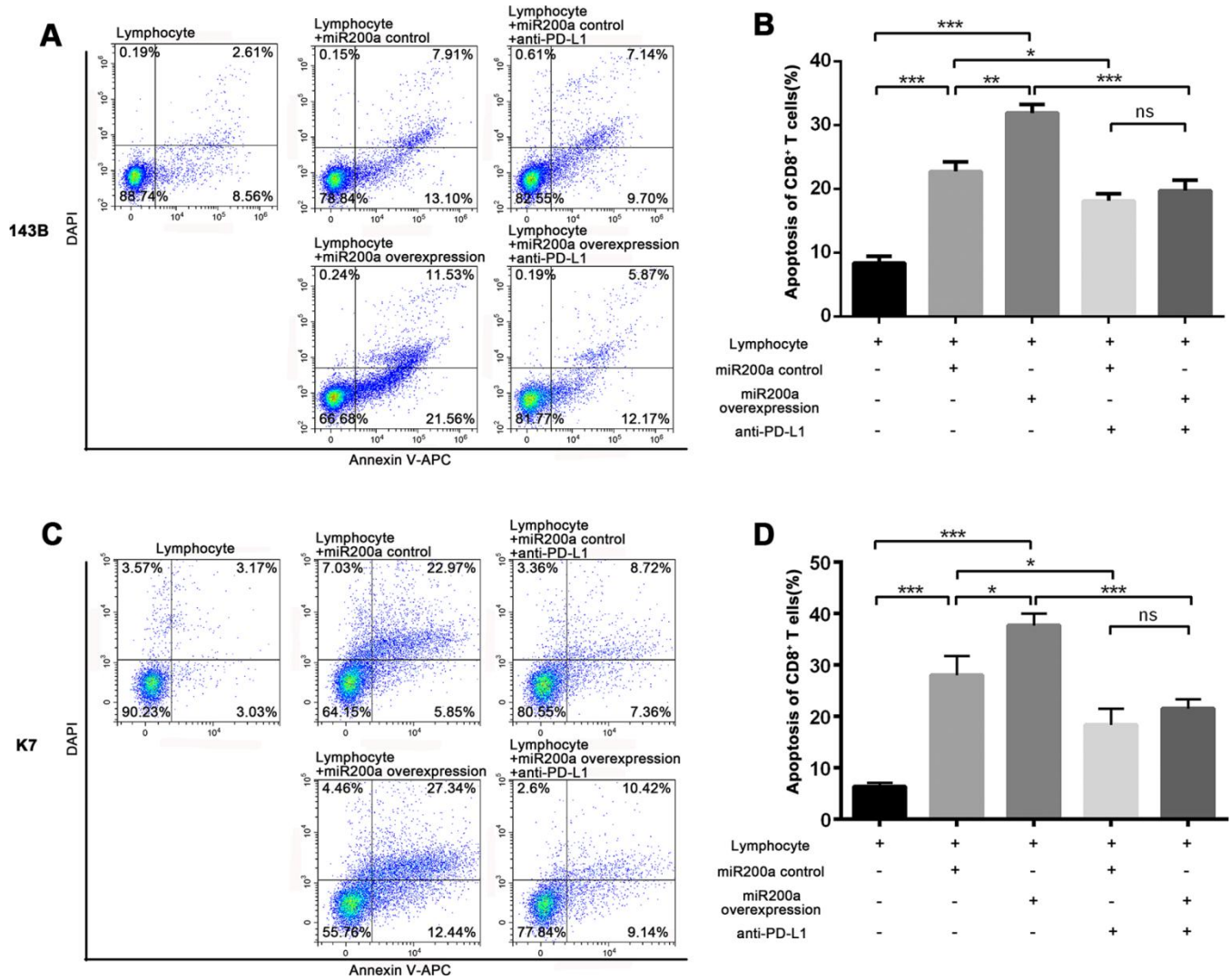


Supplementary Figure 1. Expression of miR-200 family in human and mouse osteosarcoma cell lines. (A) Expression of miR-200 family in human osteosarcoma cell lines. (B) Expression of miR-200 family in mouse osteosarcoma cell lines.

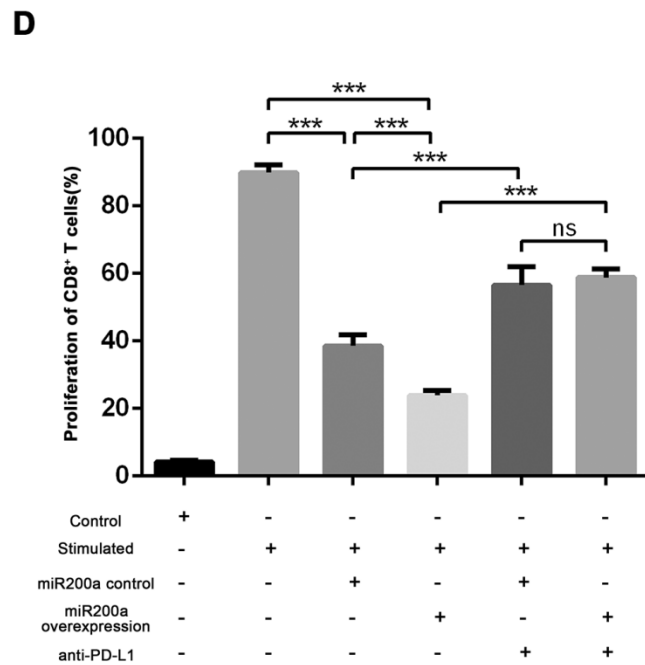
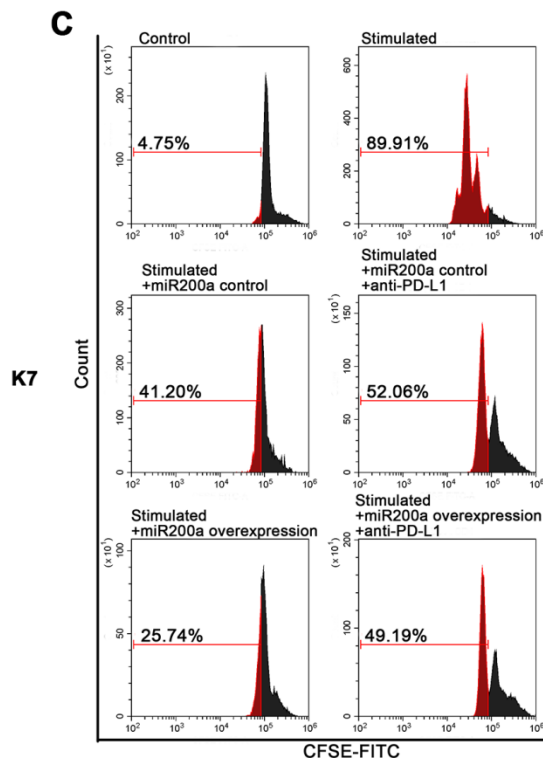
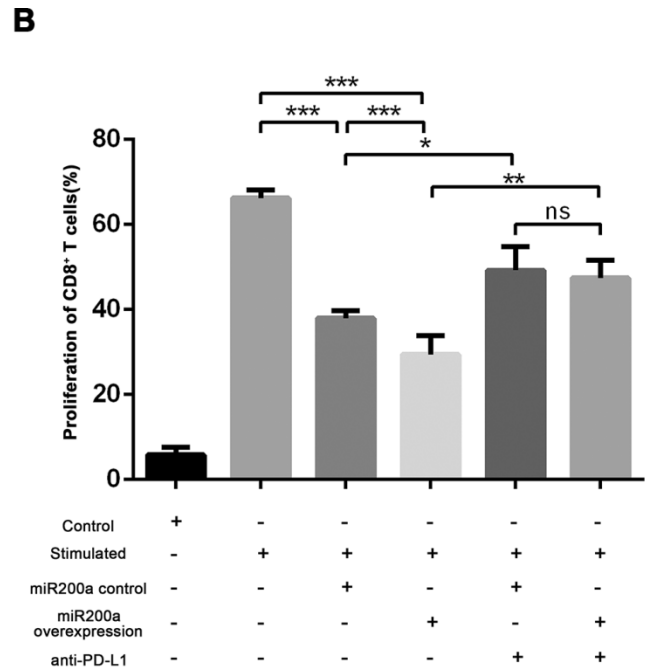
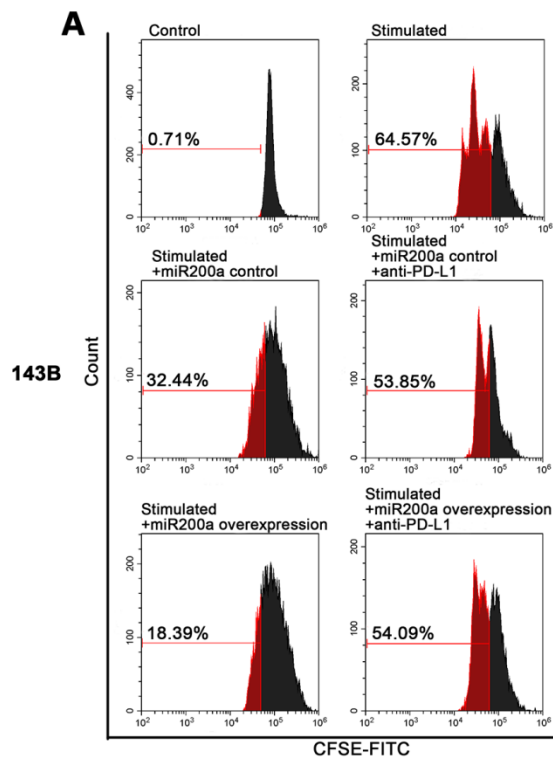
143B



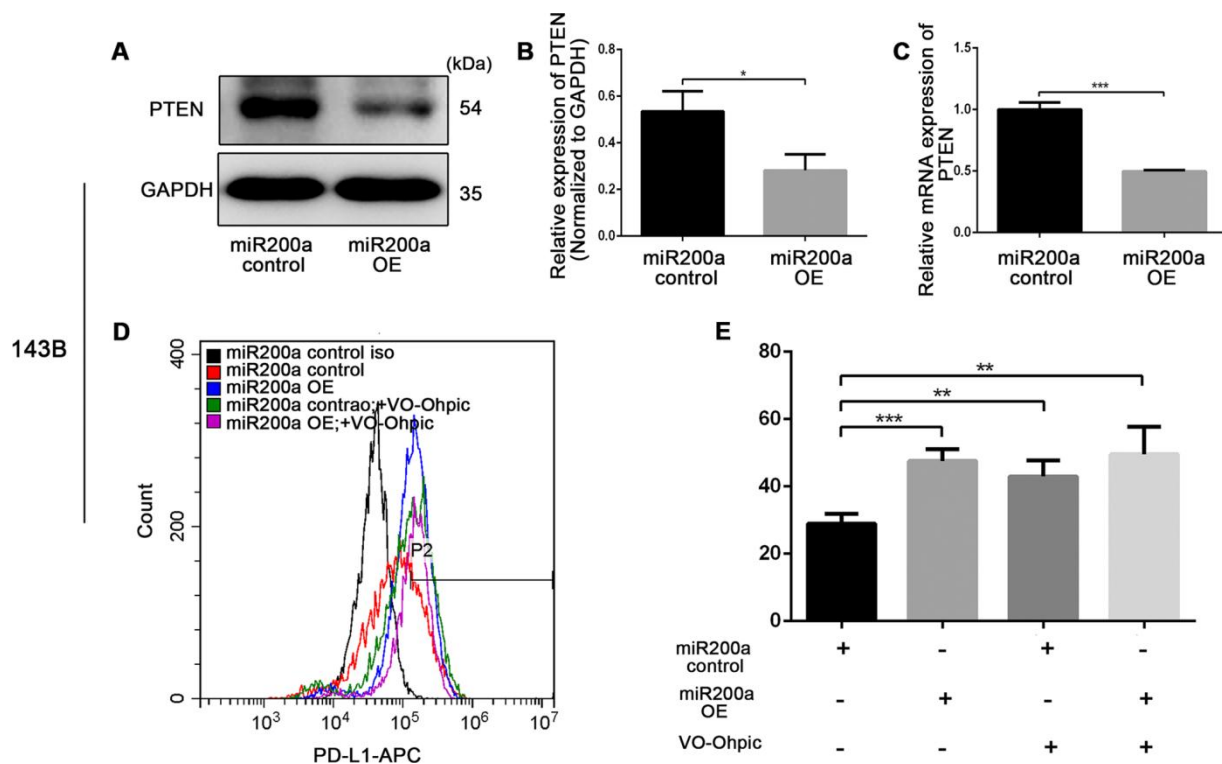
Supplementary Figure 2. miR-200a up-regulated PD-L1 expression in 143B. (A) qRT-PCR analysis of miR-200a in 143B miR-200a control and miR-200a OE. (B–C) Western blot analysis of PD-L1 in 143B miR-200a control and miR-200a OE. (D) qRT-PCR analysis of PD-L1 in 143B miR-200a control and miR-200a OE. (E–F) Flow cytometry analysis of PD-L1 in 143B miR-200a control and miR-200a OE. *P<0.05, **P<0.01, ***P<0.001.



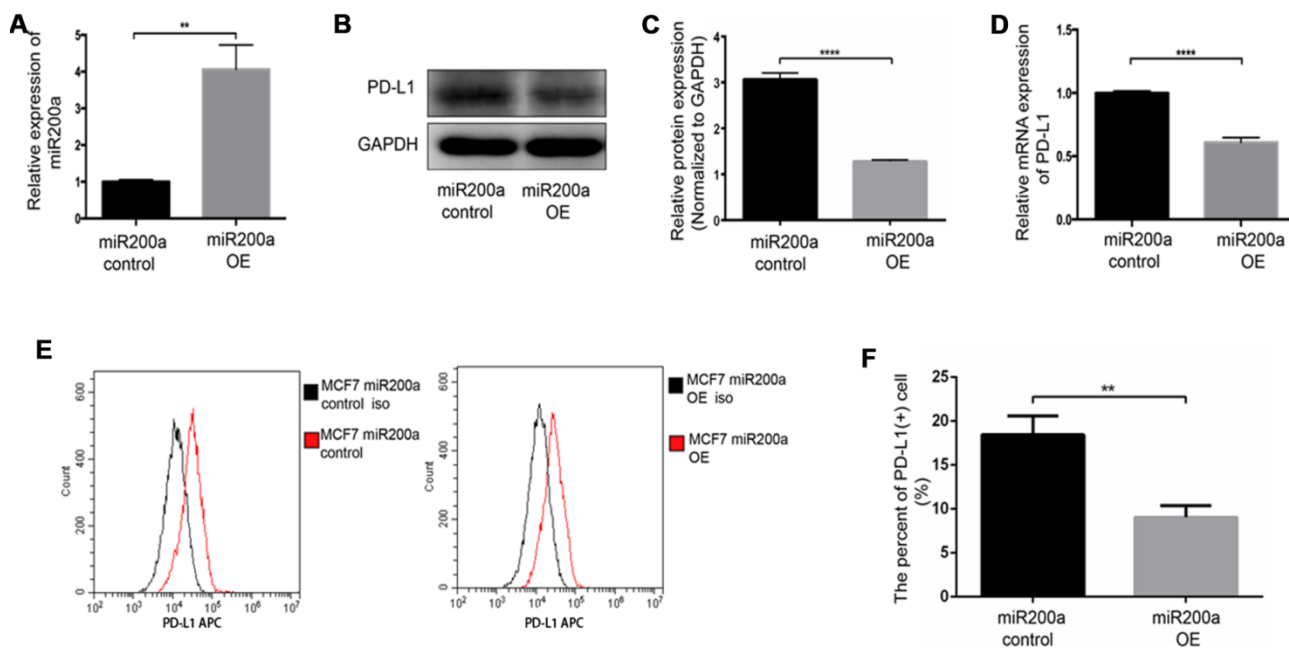
Supplementary Figure 3. miR-200a promoted the apoptosis of CD8⁺ T cells through PD-L1/PD-1 pathway *in vitro*. (A–B) Examine the apoptosis of CD8⁺ T cells after co-cultured with 143B miR-200a control or miR-200a OE. (C–D) Examine the apoptosis of CD8⁺ T cells after co-cultured with K7 miR-200a control or miR-200a OE. *P<0.05, **P<0.01, ***P<0.001.



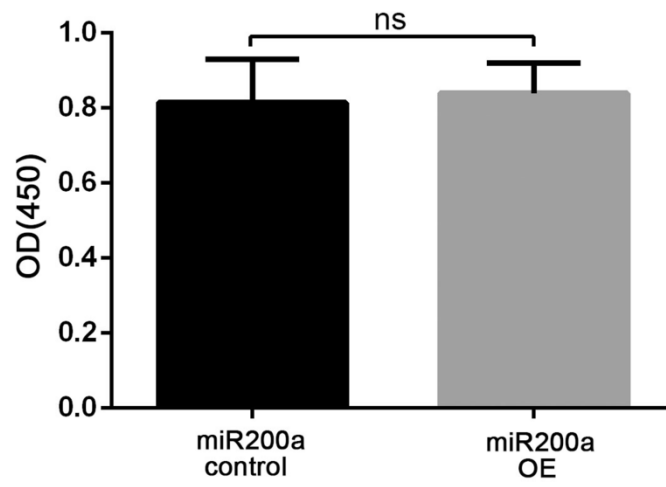
Supplementary Figure 4. miR-200a inhibited the proliferation of CD8⁺ T cells through PD-L1/PD-1 pathway *in vitro*. (A–B) Examine the proliferation of CD8⁺ T cells after co-cultured with 143B miR-200a control or miR-200a OE. (C–D) Examine the proliferation of CD8⁺ T cells after co-cultured with K7 miR-200a control or miR-200a OE. *P<0.05, **P<0.01, ***P<0.001.



Supplementary Figure 5. miR-200a up-regulated PD-L1 expression by targeting PTEN in 143B. (A–B) Western blot analysis of PTEN in 143B miR-200a control and miR-200a OE. (C) qRT-PCR analysis of PTEN in 143B miR-200a control and miR-200a OE. (D–E) Flow cytometry analysis of PD-L1 expression of 143B miR-200a control and miR-200a OE after the addition of VO-Ohpic. * $P < 0.05$, ** $P < 0.01$, *** $P < 0.001$.



Supplementary Figure 6. miR-200a inhibited PD-L1 expression in MCF7. (A) qRT-PCR analysis of miR-200a in MCF7 miR-200a control and miR-200a OE. (B–C) Western blot analysis of PD-L1 in MCF7 miR-200a control and miR-200a OE. (D) qRT-PCR analysis of PD-L1 in MCF7 miR-200a control and miR-200a OE. (E–F) Flow cytometry analysis of PD-L1 in MCF7 miR-200a control and miR-200a OE. * $P < 0.05$, ** $P < 0.01$, *** $P < 0.001$.



Supplementary Figure 7. Proliferative activity of K7 miR-200a control and miR-200a OE.