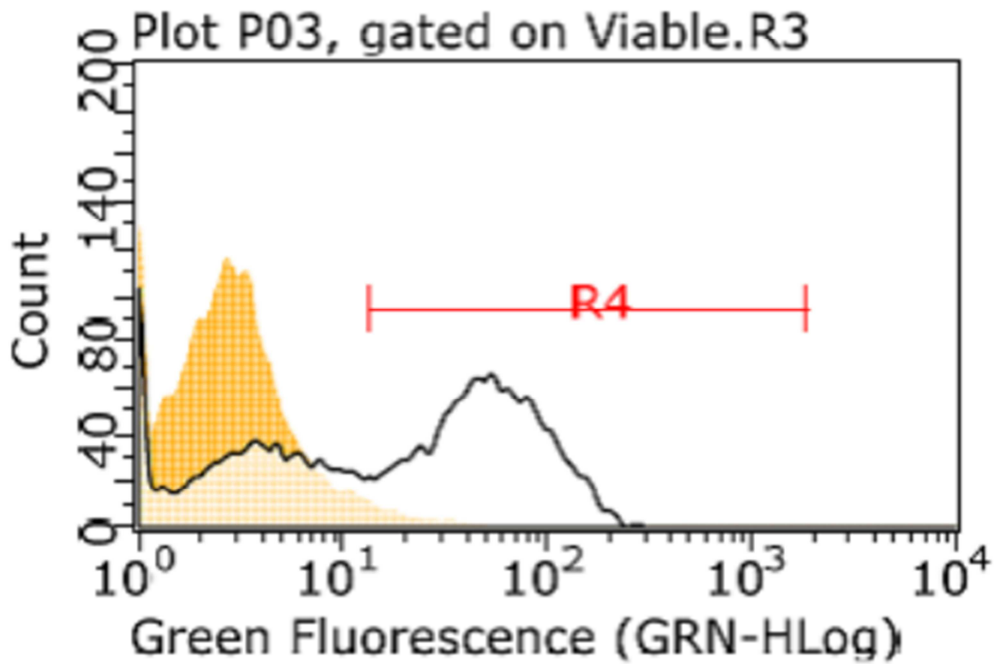


## S1 Figure



**S 1 Figure. Expression of CD163 in swine macrophages.** Plastic adherent macrophages from blood monocytes were washed twice with Ca and Mg-free PBS and detached in EDTA 10 mM in PBS over 1 hour at 4°C after gently scraping with the tip of a micropipette. After washing twice in flow cytometry buffer (FCB, i.e. PBS + 2% heat-inactivated FCS + 0.1% azide), cells were resuspended at  $6 \times 10^6$  / ml in FCB and stained with monoclonal antibody 2A10/11 to porcine CD163 and Alexa Fluor® 488 F(ab')<sub>2</sub> fragment of goat anti-mouse IgG, IgM (H+L).

Orange-colored area: negative control.

White-colored area: mAb 2A10/11-stained cells.