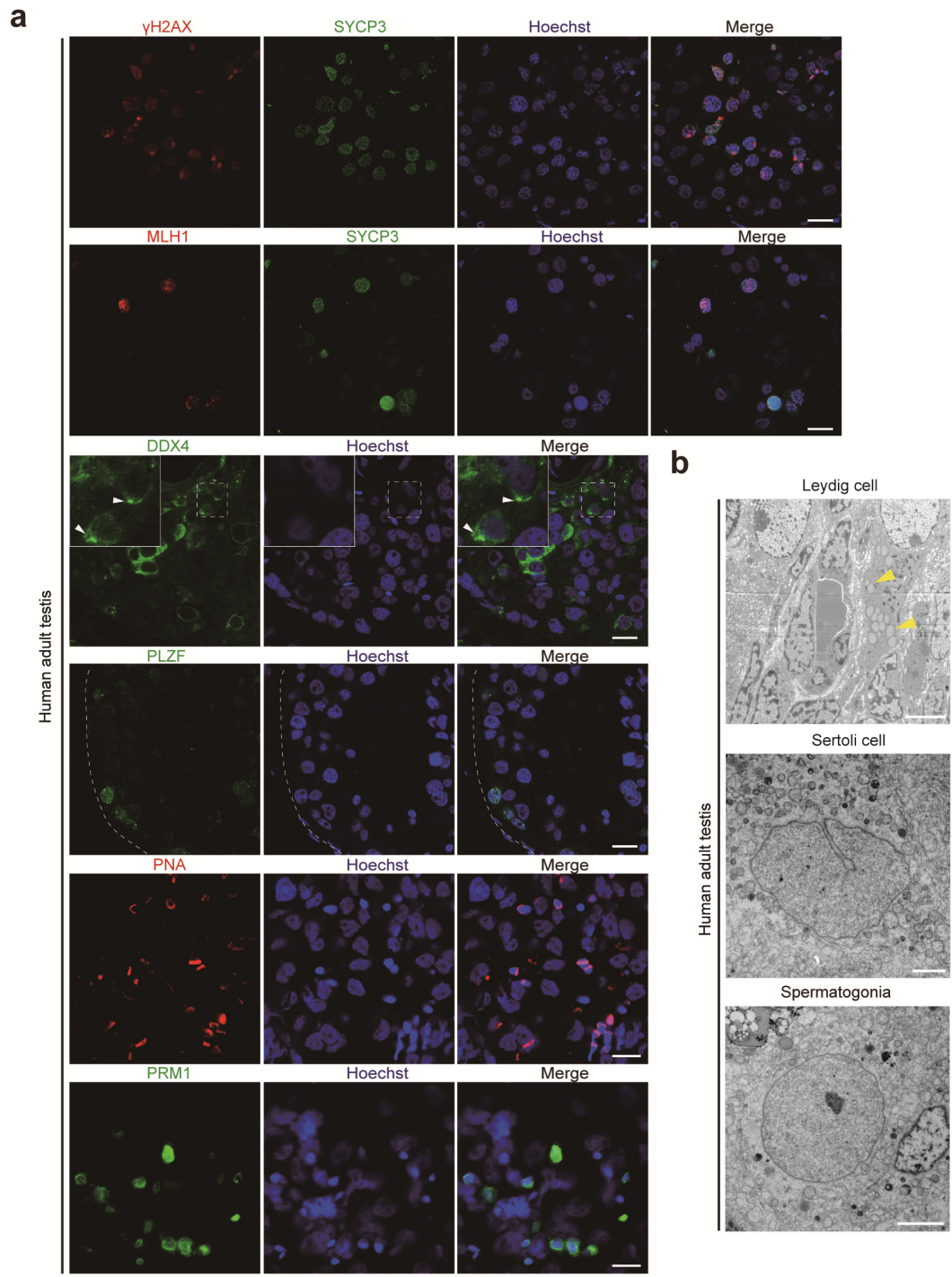


**Figure S2. Immunostaining and TEM of human adult testis. Related to Fig.1-3.**



**a**, Immunostaining of human adult testis. Chromatoid bodies (CBs) in spermatids (white triangles). Scale bars, 10  $\mu\text{m}$ .

**b**, TEM of human adult testis. Lipid droplets in the Leydig cells (yellow triangles). Scale bars, Leydig: 5  $\mu\text{m}$ , Sertoli: 2  $\mu\text{m}$ , Spermatogonia: 2  $\mu\text{m}$ .