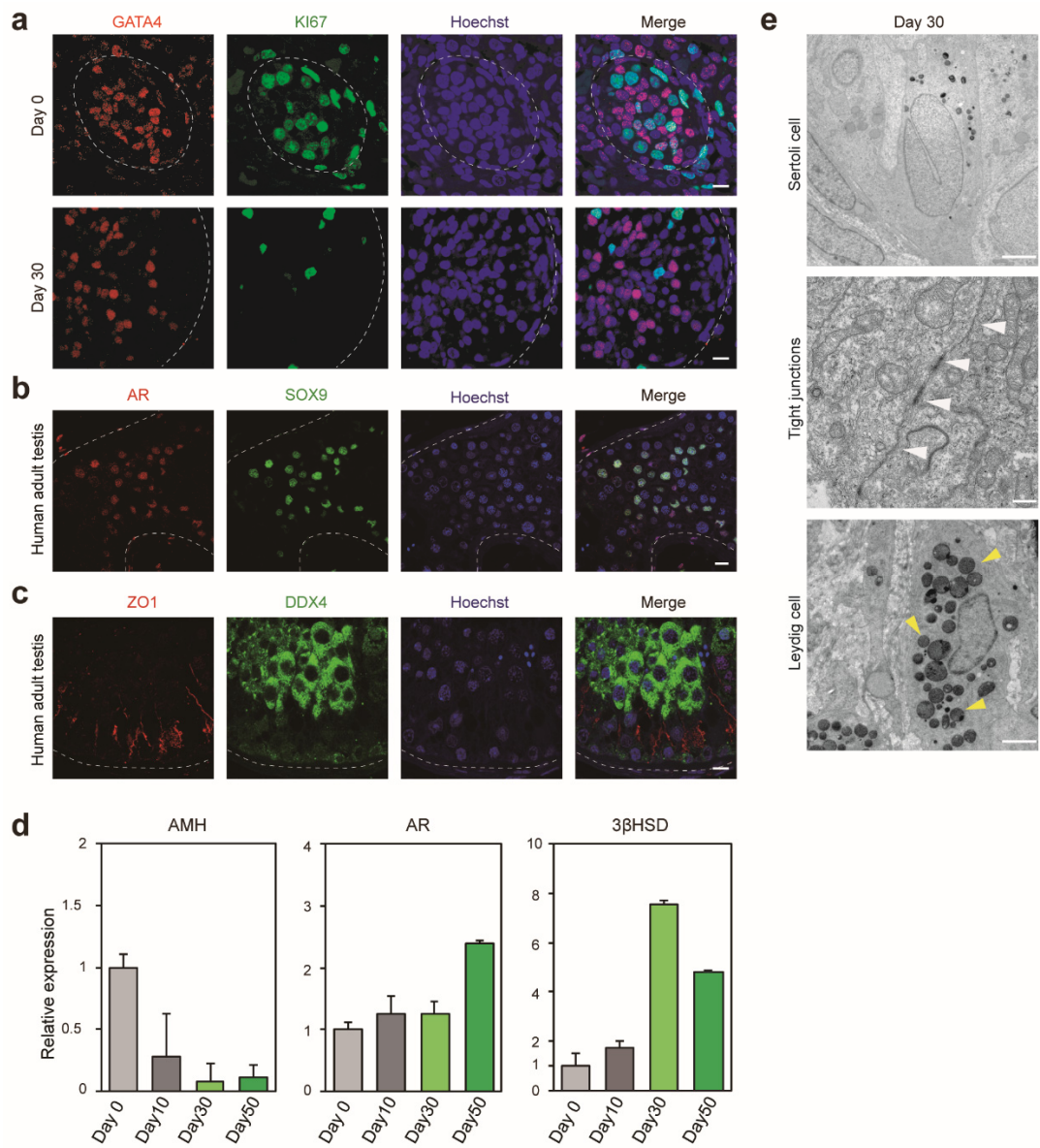


Figure S4. Immunostaining and TEM of Sertoli cells and Leydig cells in cultured tissues. Related to Fig. 2.



a, Immunostaining of Sertoli cells from day 0 and day 30 cultures for GATA4 (red) and Ki67 (green). DNA was counterstained with Hoechst 33342. Scale bars, 10 μm .

b, Immunostaining of Sertoli cells in human testis control for AR (red) and SOX9 (green). DNA was counterstained with Hoechst 33342. Scale bars, 10 μm .

c, Immunostaining of DDX4 (green) and ZO1 (red) in the control human testis. DNA was counterstained with Hoechst 33342. Scale bars, 10 μm .

d, qRT-PCR analysis of cultured tissues from day 0 to day 50. Relative gene expression levels were normalized to GAPDH and reflect mean \pm SD from three independent biological replicates.

e, TEM of tissues cultured for 30 days. Tight junction between Sertoli cells (white triangles) and lipid droplets in the Leydig cells (yellow triangles).Scale bars, Sertoli cell:2 μm , Tight junctions:500 nm, Leydig cell:2 μm .