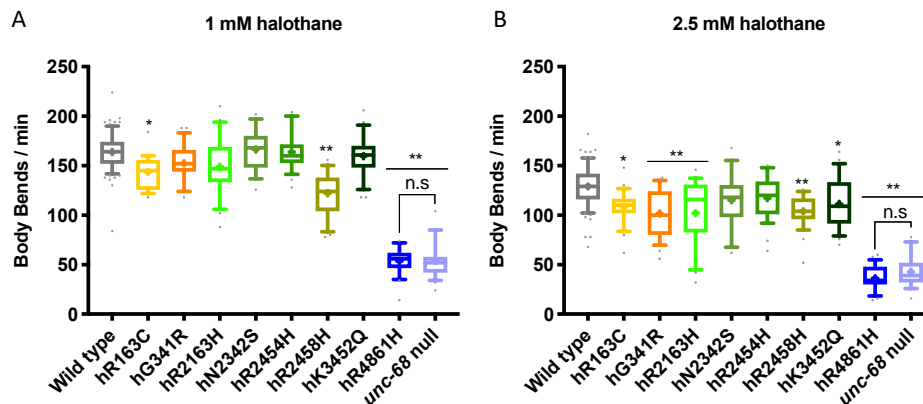


Supplementary Material

Supplementary Figure 1



Supplementary Figure 1. RyR variant strains show differing sensitivities to lower concentrations of halothane. Thrashing rate in S medium, in body bends per minute, for RyR variant strains, labelled by the human variant they correspond to, in 1 mM (A) and 2.5 mM (B) halothane. 25 individuals were examined per strain. Boxes indicate the median and interquartile range, with whiskers to the 10-90 percentile, outliers as dots, and + to indicate the mean. Significance is between variant strains and the N2 wild type, apart from where indicated to the CB540 *unc-68(e540)* null mutant. * $P < 0.05$, ** $P < 0.005$, n.s = not significant (one-way ANOVA, with Tukey's multiple comparison test).