

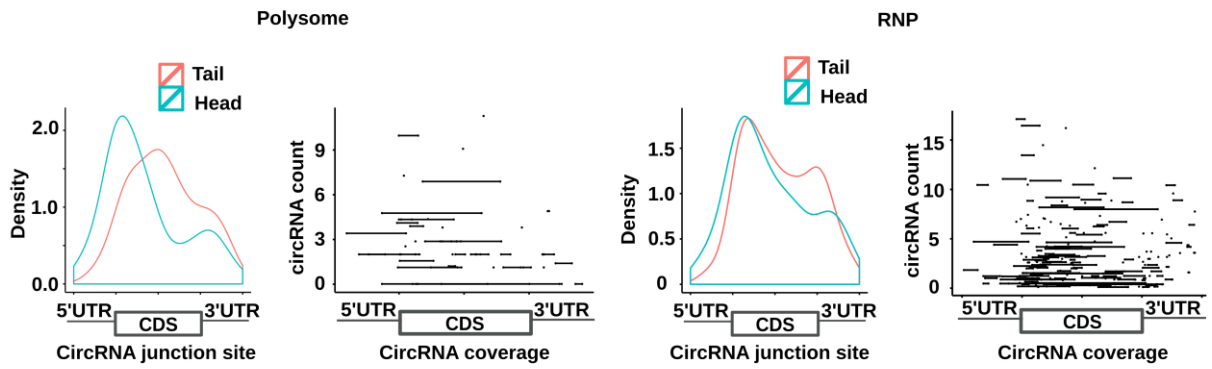
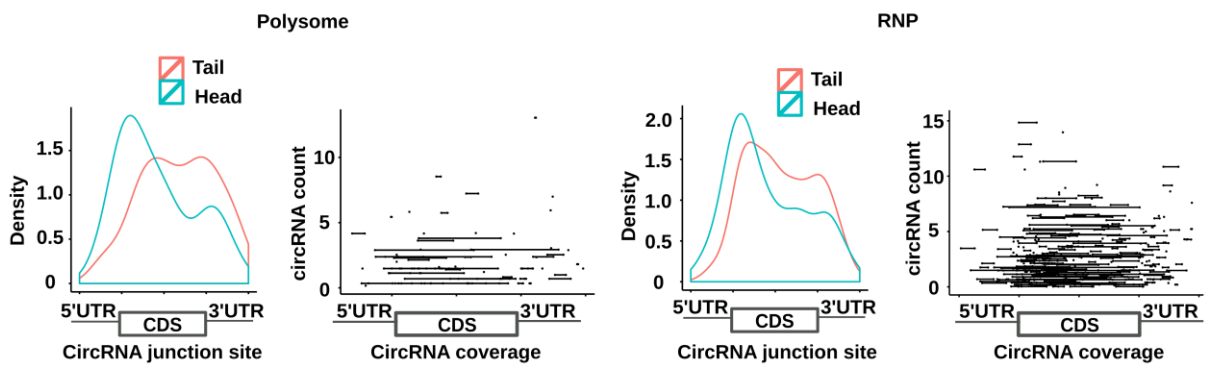
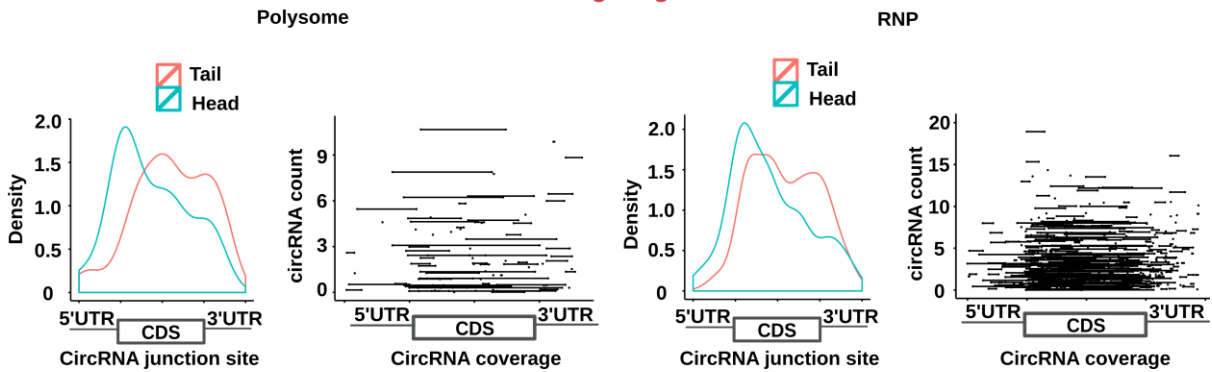
a**Pachytene****b****Round****c****Elongating**

Fig.S8. circular RNAs associated with the polysomes contain more intact CDS in both round and elongating spermatids. Density plots of circRNA reads showing distribution of circRNA junction reads along the entire length of the longest mRNAs in pachytene spermatocytes (**a**), round (**b**) and elongating (**c**) spermatids. Biological replicates, n=3.