

## Supplementary material

### Green gravel: a novel restoration tool to combat kelp forests decline

Stein Fredriksen,<sup>1,2\*</sup> Karen Filbee-Dexter,<sup>1,3</sup> Kjell Magnus Norderhaug,<sup>1</sup> Henning Steen,<sup>1</sup> Torjan Bodvin,<sup>1†</sup> Melinda A. Coleman,<sup>4</sup> Frithjof Moy,<sup>1</sup> Thomas Wernberg<sup>3\*</sup>

<sup>1</sup> Institute of Marine Research, Nye Flødevigveien 20, 4817 His, Norway

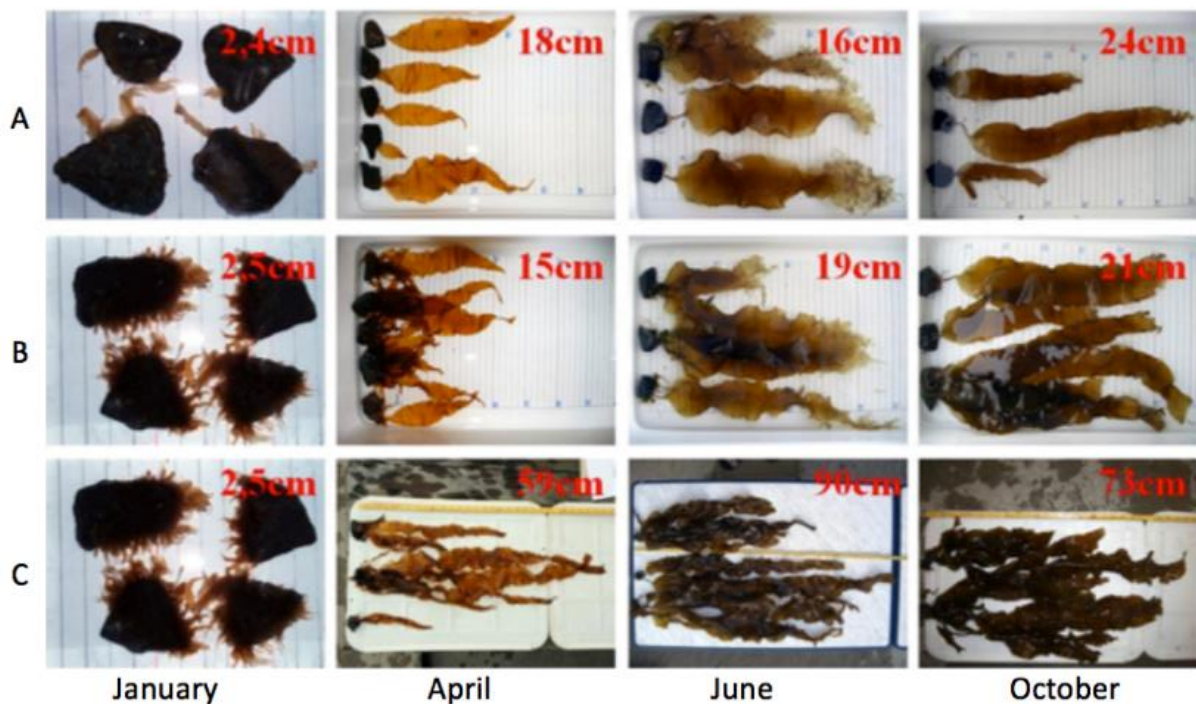
<sup>2</sup> University of Oslo, Department of Biosciences, PO Box 1066 Blindern, 0316 Oslo, Norway.

<sup>3</sup>UWA Oceans Institute & School of Biological Sciences, The University of Western Australia, Perth, Australia

<sup>4</sup>New South Wales Department of Primary Industries, Coffs Harbour, Australia

\*Corresponding authors: stein.fredriksen@ibv.uio.no, thomas.wernberg@uwa.edu.au

†Deceased



**Figure S1.** Green gravel seeded with kelp (*Saccharina latissima*) and held in the lab and kelp plants after growth in the field in April, June and October at 7 m depth. Row A: Gravel with low seedling density, B: Gravel with high seedling density. C: Gravel from in-door seedling raceways. Average maximum plant length from 5 gravels is indicated in red on each photo.