

Supplementary Table 1. Total Adverse Event Summary

Adverse Event		Grade							
		1		2		3		4	
		N	%	N	%	N	%	N	%
Type	Arm								
Aspartate aminotransferase incre	1	13	41.9	2	6.5	2	6.5	1	3.2
	2	1	6.7						
	3	5	55.6	1	11.1	1	11.1		
Fatigue	1	9	29.0	2	6.5	3	9.7		
	2	4	26.7	3	20.0				
	3	1	11.1	2	22.2				
Alanine aminotransferase increas	1	12	38.7	3	9.7	3	9.7		
	3	4	44.4	1	11.1				
Platelet count decreased	1	12	38.7						
	2	2	13.3			1	6.7	1	6.7
	3	2	22.2						
Hypertension	1	1	3.2	7	22.6	6	19.4		
	3	1	11.1	2	22.2				
Nausea	1	6	19.4	3	9.7				
	2	4	26.7	2	13.3	1	6.7		
	3			1	11.1				
Diarrhea	1	6	19.4	4	12.9	1	3.2		
	2					1	6.7		
	3	1	11.1	2	22.2				
Vomiting	1	3	9.7	2	6.5	1	3.2		
	2	2	13.3	3	20.0				
Neutrophil count decreased	1	3	9.7	3	9.7				
	2			1	6.7			2	13.3
	3			1	11.1				
Anorexia	1	2	6.5	3	9.7				
	3			2	22.2				

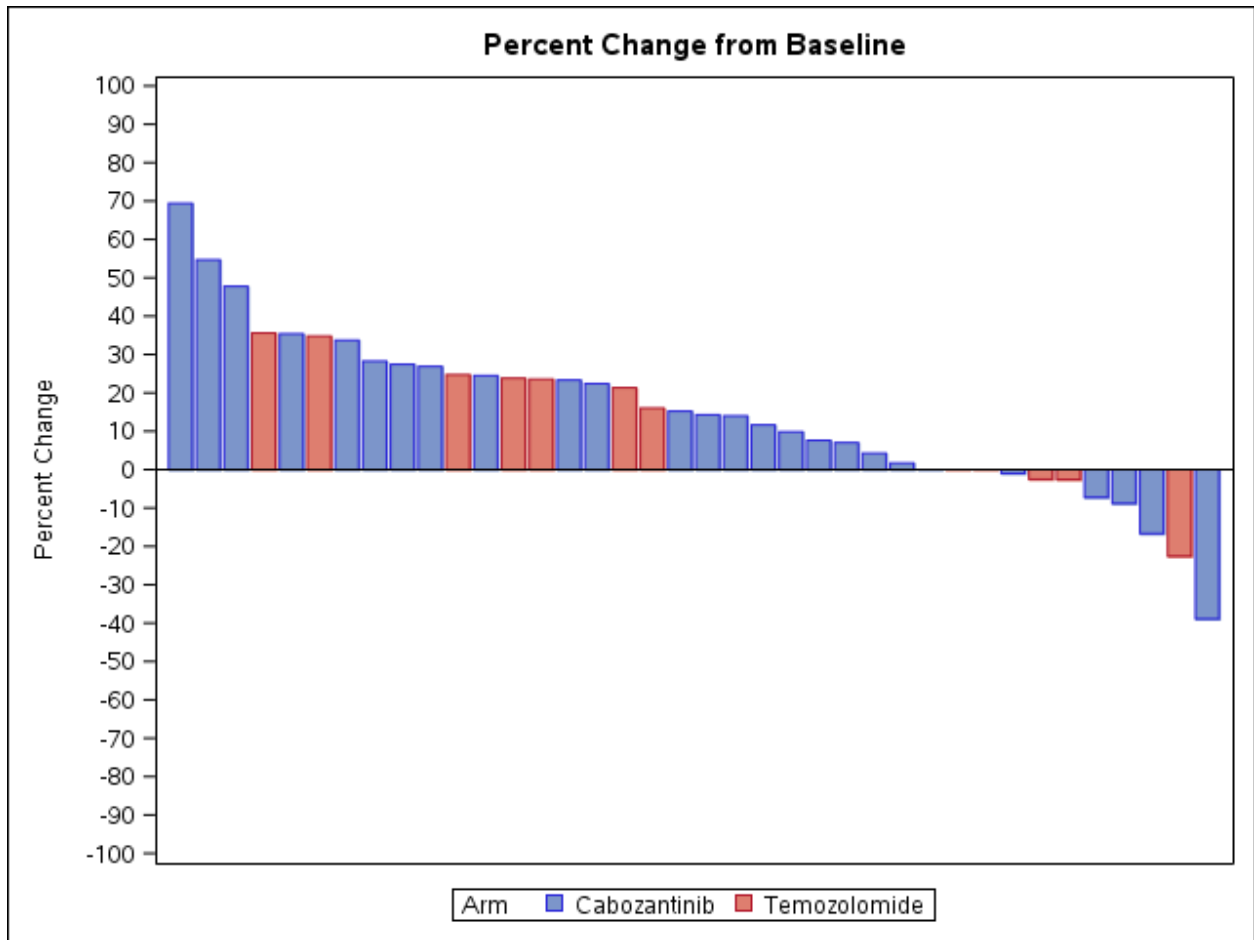
Adverse Event		Grade							
		1		2		3		4	
		N	%	N	%	N	%	N	%
Alkaline phosphatase increased	1	2	6.5	1	3.2	2	6.5		
	2	1	6.7						
Anemia	1	2	6.5						
	2			1	6.7				
	3	3	33.3						
Blood bilirubin increased	1	2	6.5			2	6.5		
	3	2	22.2						
Weight loss	1	2	6.5	2	6.5				
	3	1	11.1	1	11.1				
White blood cell decreased	1	2	6.5	1	3.2				
	2							1	6.7
	3	1	11.1	1	11.1				
Constipation	1	3	9.7						
	2	2	13.3						
Dry mouth	1	2	6.5	2	6.5				
	3	1	11.1						
Dysgeusia	1	4	12.9						
	2	1	6.7						
Hyperglycemia	1	3	9.7	1	3.2				
	2	1	6.7						
Hypothyroidism	1	2	6.5	1	3.2				
	3	1	11.1	1	11.1				
Arthralgia	1	2	6.5	1	3.2				
	3	1	11.1						
Creatinine increased	1	2	6.5	1	3.2				
	3	1	11.1						
Dry skin	1	2	6.5	1	3.2				
	2	1	6.7						

Adverse Event		Grade							
		1		2		3		4	
		N	%	N	%	N	%	N	%
Lymphocyte count decreased	1	2	6.5						
	2			1	6.7				
	3	1	11.1						
Mucositis oral	1	3	9.7	1	3.2				
Oral pain	1	3	9.7						
	3	1	11.1						
Skin and subcut tissue disord -	1	3	9.7						
	3			1	11.1				
Thromboembolic event	1					4	12.9		
Abdominal pain	1	1	3.2			1	3.2		
	3			1	11.1				
Dehydration	1			1	3.2	2	6.5		
Dizziness	1	2	6.5						
	3	1	11.1						
Dyspepsia	1			2	6.5				
	2	1	6.7						
Hypoalbuminemia	1	1	3.2	1	3.2				
	3			1	11.1				
Hyponatremia	1	2	6.5			1	3.2		
Investigations - Other, specify	1	1	3.2						
	2	1	6.7						
	3	1	11.1						
Palmar-plantar erythrodysesthesi	1	1	3.2	1	3.2				
	3	1	11.1						
Proteinuria	1	2	6.5	1	3.2				
Rash acneiform	1	1	3.2						
	2	1	6.7						
	3	1	11.1						

Adverse Event		Grade							
		1		2		3		4	
		N	%	N	%	N	%	N	%
Edema limbs	1	1	3.2						
	3					1	11.1		
Generalized muscle weakness	1			2	6.5				
Headache	1	1	3.2			1	3.2		
Hemoglobin increased	1	1	3.2						
	3	1	11.1						
Hepatobiliary disorders - Other,	1					2	6.5		
Hoarseness	1	1	3.2						
	3			1	11.1				
Rash maculo-papular	1	1	3.2						
	3			1	11.1				
Sore throat	1	1	3.2			1	3.2		
Anaphylaxis	1					1	3.2		
Cardiac disorders - Other, speci	1	1	3.2						
Chills	2	1	6.7						
Chronic kidney disease	1					1	3.2		
Cough	3	1	11.1						
Dry eye	3	1	11.1						
Dysphagia	3	1	11.1						
Dyspnea	3			1	11.1				
ECG QT corrected interval prolon	1	1	3.2						
Enterocolitis infectious	3					1	11.1		
Epistaxis	1	1	3.2						
Flatulence	3			1	11.1				
Gastroesophageal reflux disease	1	1	3.2						
Gastrointestinal disorders - Oth	3			1	11.1				
Gen disord and admin site conds-	1	1	3.2						
Hyperkalemia	3	1	11.1						
Hyperthyroidism	1			1	3.2				

Adverse Event		Grade							
		1		2		3		4	
		N	%	N	%	N	%	N	%
Hypokalemia	3			1	11.1				
Hypophosphatemia	1					1	3.2		
Hypotension	3	1	11.1						
Insomnia	1	1	3.2						
Lipase increased	1					1	3.2		
Metabolism, nutrition disord - O	1					1	3.2		
Musculoskeletal, conn tissue - O	1			1	3.2				
Nail discoloration	1	1	3.2						
Neck pain	1			1	3.2				
Nervous system disorders - Oth s	2	1	6.7						
Pain in extremity	3					1	11.1		
Palpitations	1	1	3.2						
Peripheral sensory neuropathy	1	1	3.2						
Portal vein thrombosis	1					1	3.2		
Pruritus	1	1	3.2						
Tinnitus	1	1	3.2						

Supplementary Figure 1. Percent Change in Tumor Size



Supplementary Figure 2. Somatic mutations in UM cases by whole exome sequencing.

Profiles of recurrent non-synonymous somatic mutations (NSSMs) in UM tumor including genes identified in exploratory fashion. Each column represents a separate case. Above each column is the mutational burden of each case as assessed by the total number of NSSMs per tumor.

