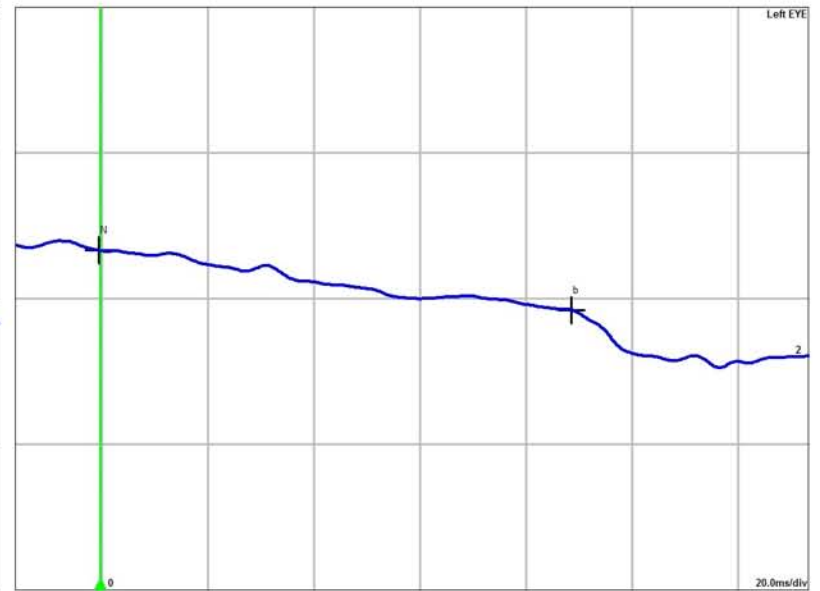
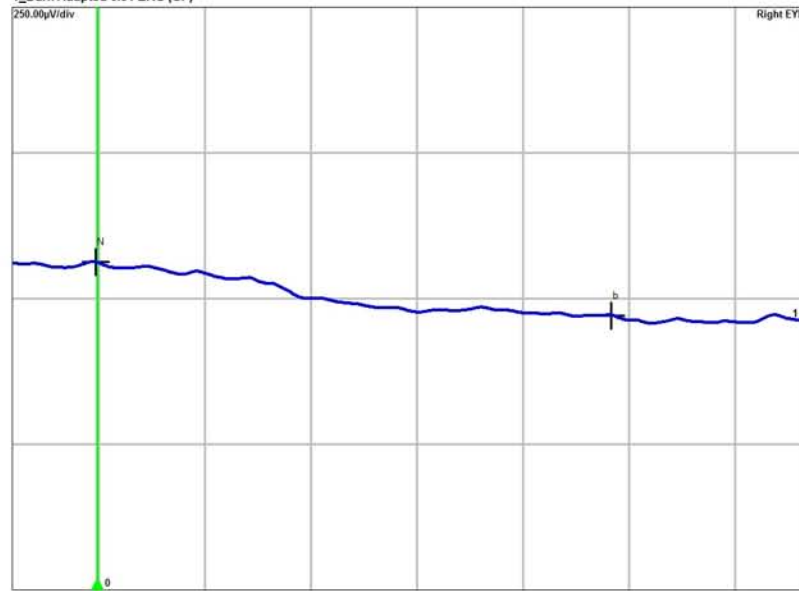


# F1: IV-8

## Diagnosis: 1\_Dark Adapted 0.01 ERG (GF)

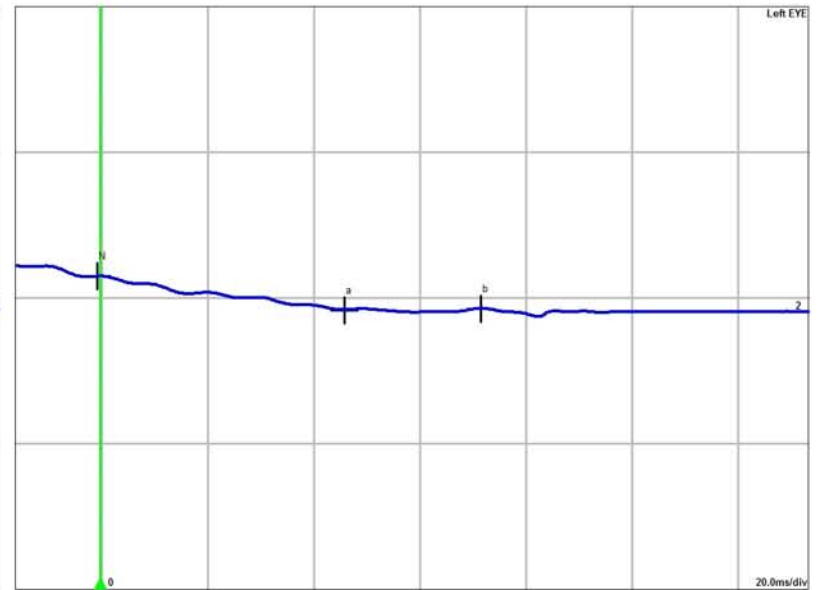
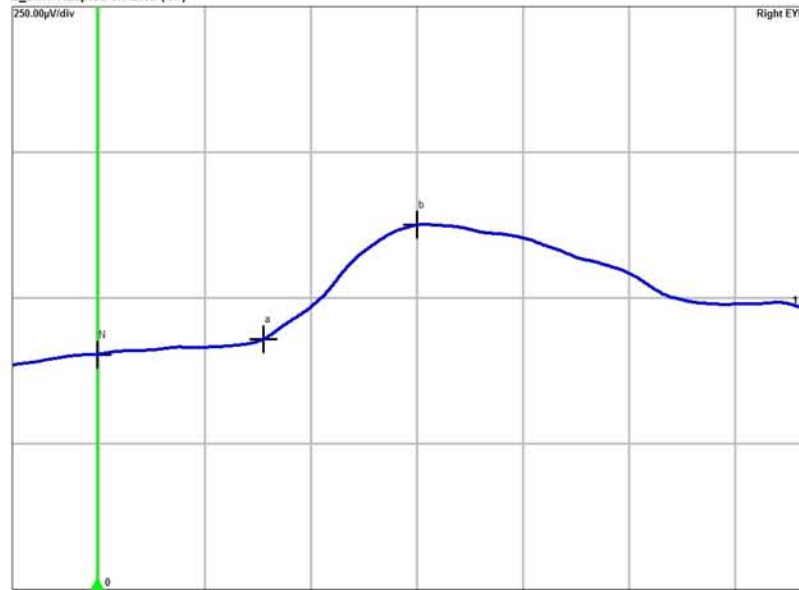


Normals  
Channel  
1 R-1  
2 L-2

67-91  
b [ms]  
97.2 (I)  
88.9

95.0µV-305µV  
b-wave  
92.4µV (I)  
103µV

## 2\_Dark Adapted 3.0 ERG (GF)



Normals  
Channel  
1 R-1  
2 L-2

14-22  
a [ms]  
31.4 (I)  
46.1 (I)

33-46  
b [ms]  
60.5 (I)  
71.9 (I)

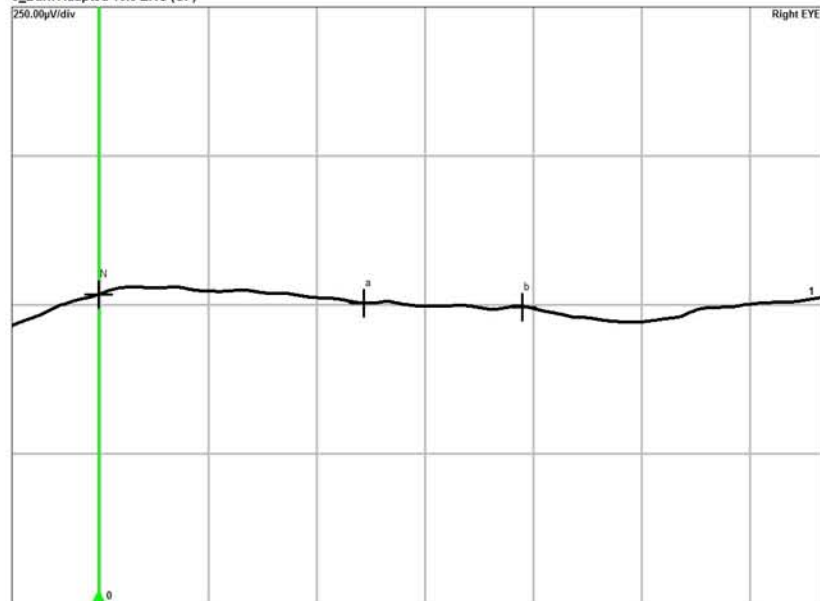
155µV-356µV  
a-wave  
25.2µV (I)  
58.7µV (I)

290µV-654µV  
b-wave  
197µV (I)  
2.46µV (I)

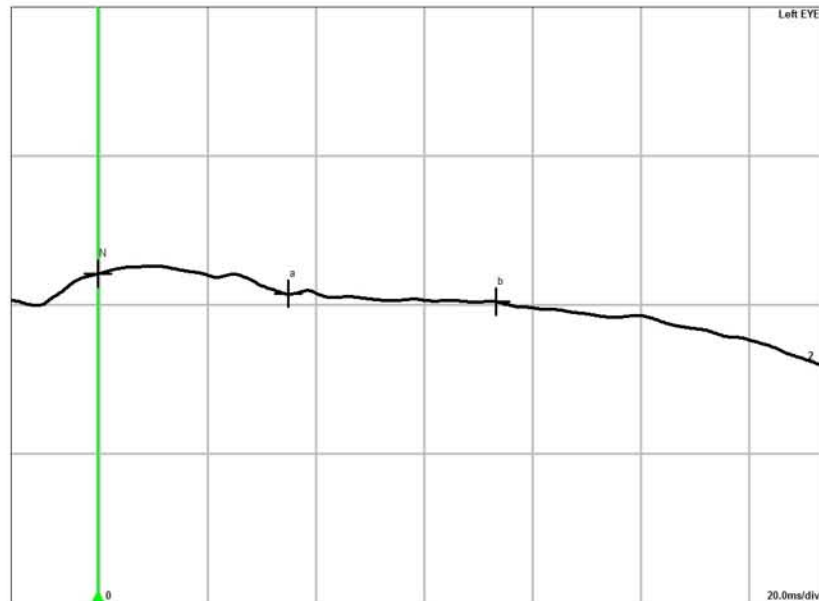
1.50-2.60  
b/a  
7.52  
0.0419 (I)

# F1: IV-8

3\_Dark Adapted 10.0 ERG (GF)

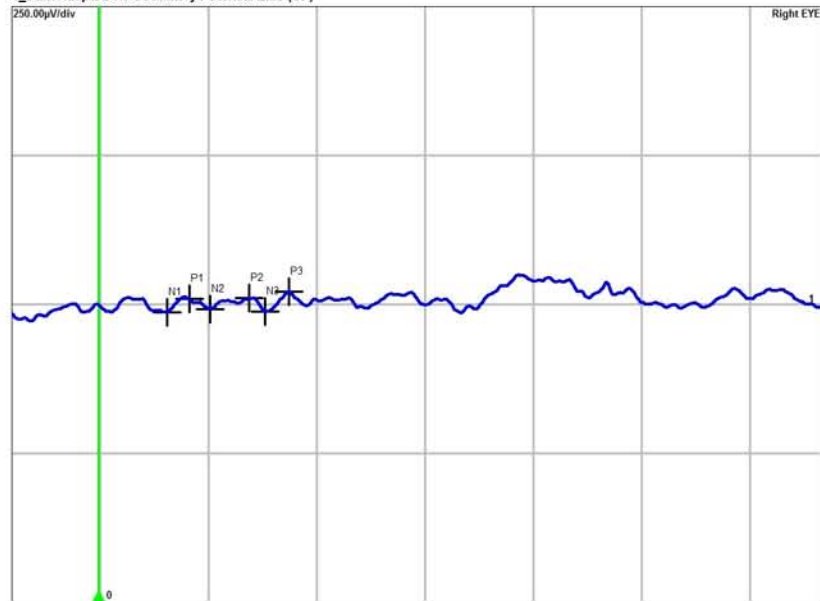


Channel	a [ms]	b [ms]	a-wave
1 R-1	49.0	78.4	14.9µV
2 L-2	35.2	73.7	34.2µV

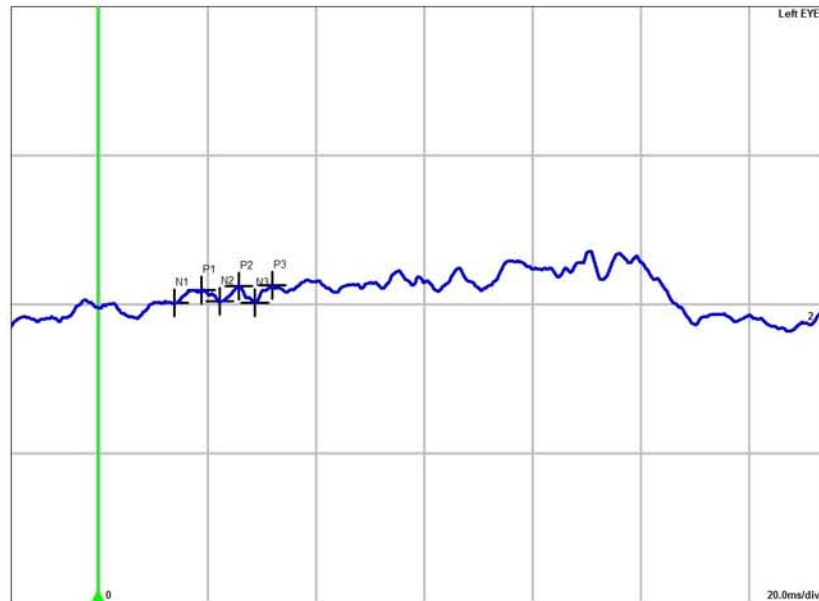


b-wave	6.74µV
12.7µV	

4\_Dark Adapted 3.0 Oscillatory Potential ERG (GF)

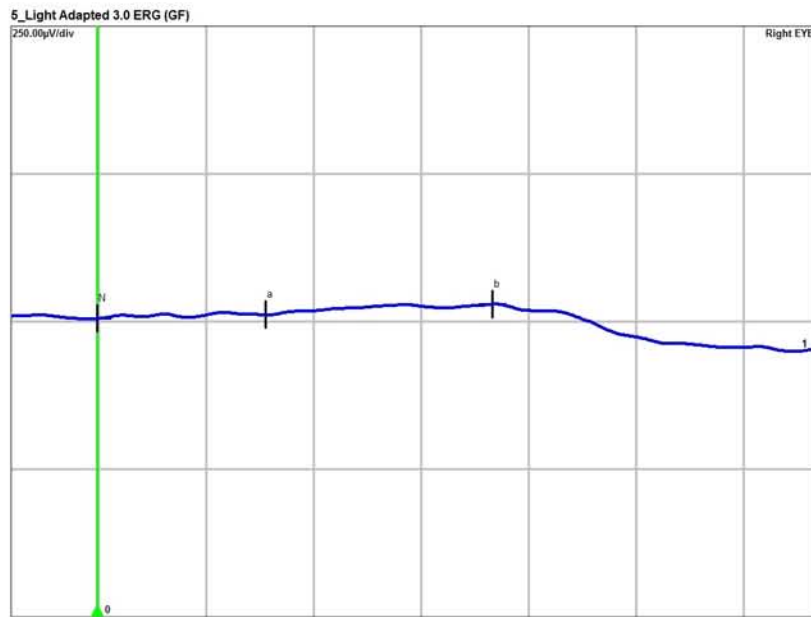


Channel	P1 [ms]	N2 [ms]	P2 [ms]	N3 [ms]	P3 [ms]
1 R-1	16.7	20.5	27.9 (0)	30.8	35.2
2 L-2	19.1	22.6	28.1 (0)	29.1	32.3
Normals	-	-	22-24	-	-

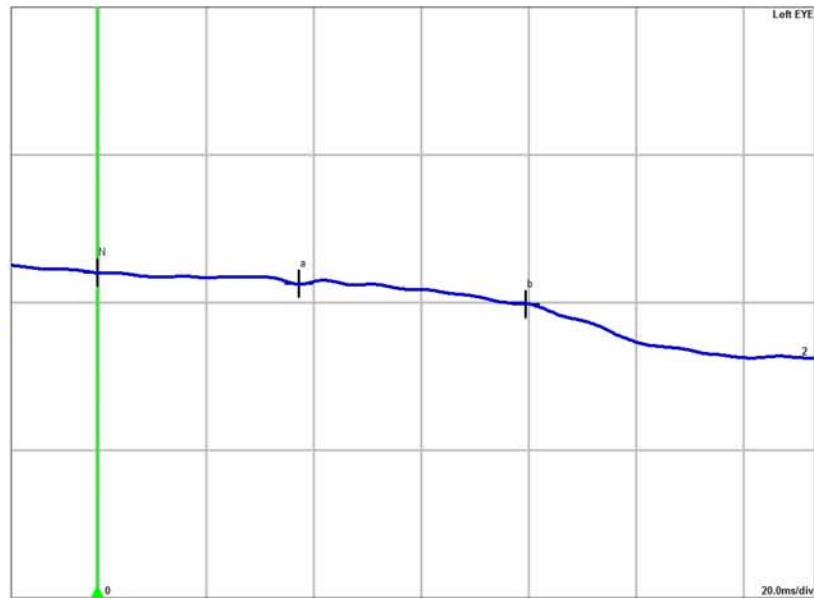


OS1	OS2	OS3	Sum OS
22.7µV	18.2µV	34.2µV	75.1µV
22.2µV	26.0µV	28.8µV	75.9µV
21.0µV-64.0µV			

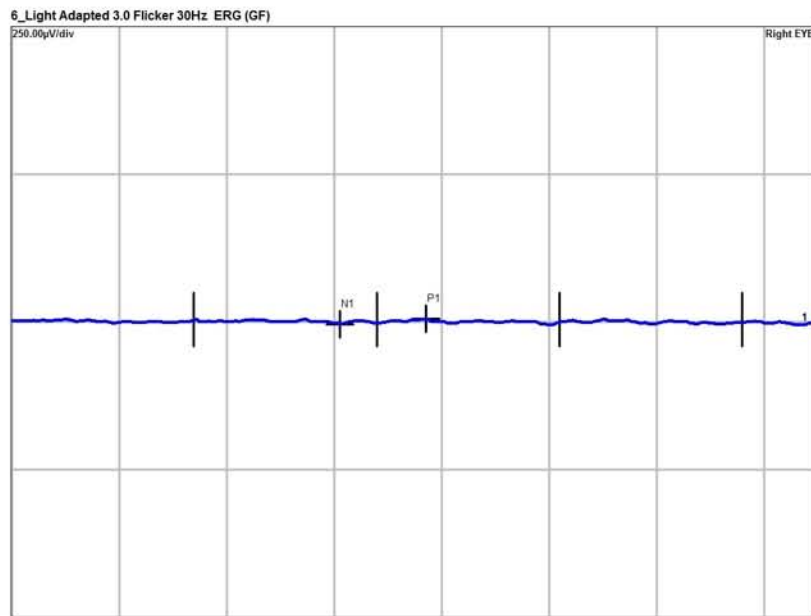
# F1: IV-8



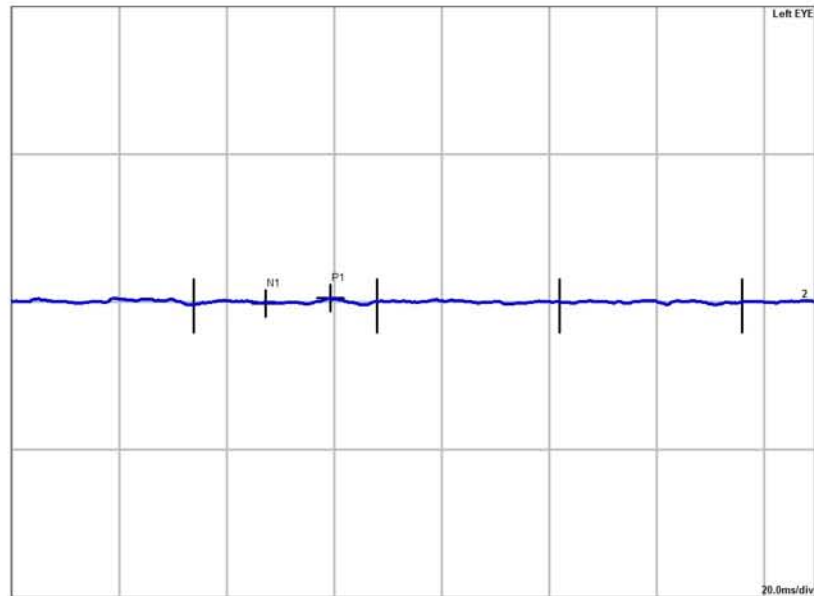
Normals	13-16	29-33	26.0µV-62.0µV
Channel	a [ms]	b [ms]	a-wave
1 R-1	31.4 (I)	73.7 (I)	6.12µV (I)
2 L-2	37.6 (I)	79.8 (I)	19.0µV (I)



Normals	103µV-250µV
Channel	b-wave
1 R-1	18.0µV (I)
2 L-2	33.8µV (I)



Channel	P1 [ms]	N1 - P1	30 Hz Amp
1 R-1	77.5 (I)	10.1µV (I)	1.87µV
2 L-2	59.6	8.73µV (I)	2.43µV
Normals			
1 R-1	59-64	57.0µV-223µV	



Channel	P1 [ms]	N1 - P1	30 Hz Amp
1 R-1	77.5 (I)	10.1µV (I)	1.87µV
2 L-2	59.6	8.73µV (I)	2.43µV
Normals			
1 R-1	59-64	57.0µV-223µV	

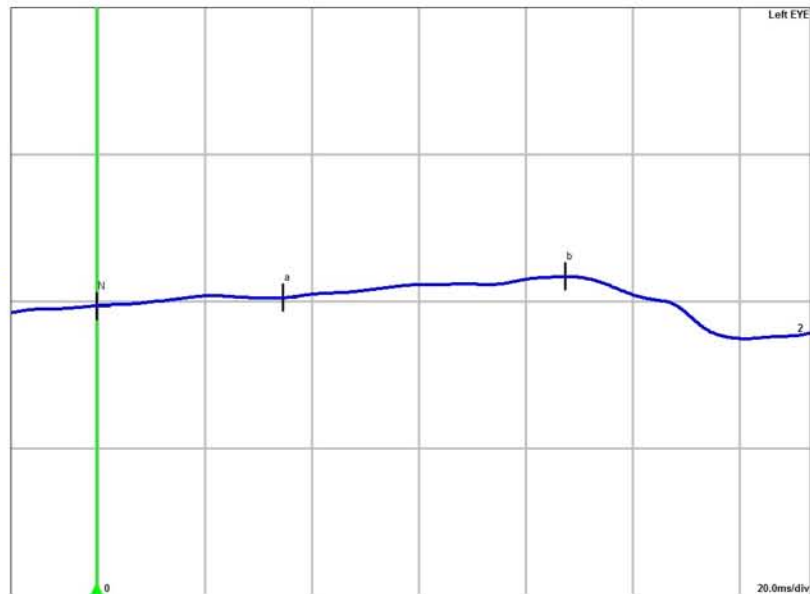
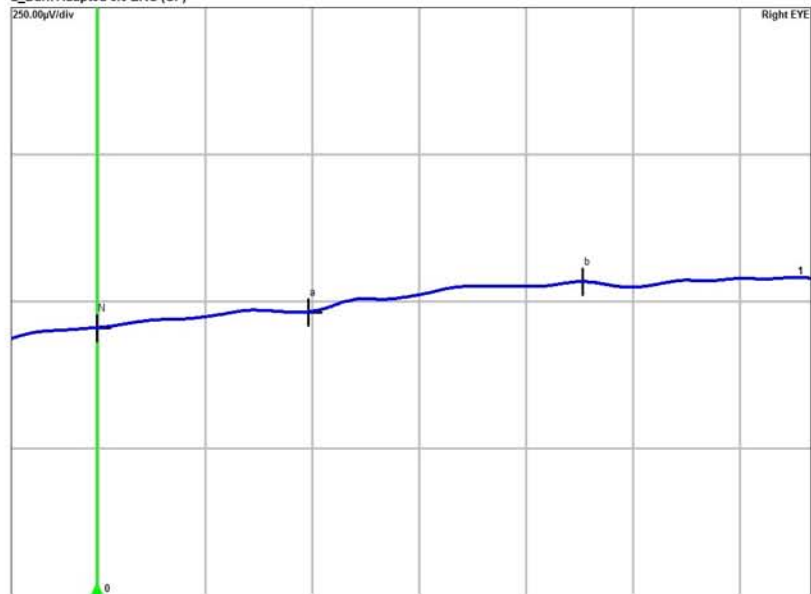
F1: IV-17

**Diagnosis:**  
1\_Dark Adapted 0.01 ERG (GF)



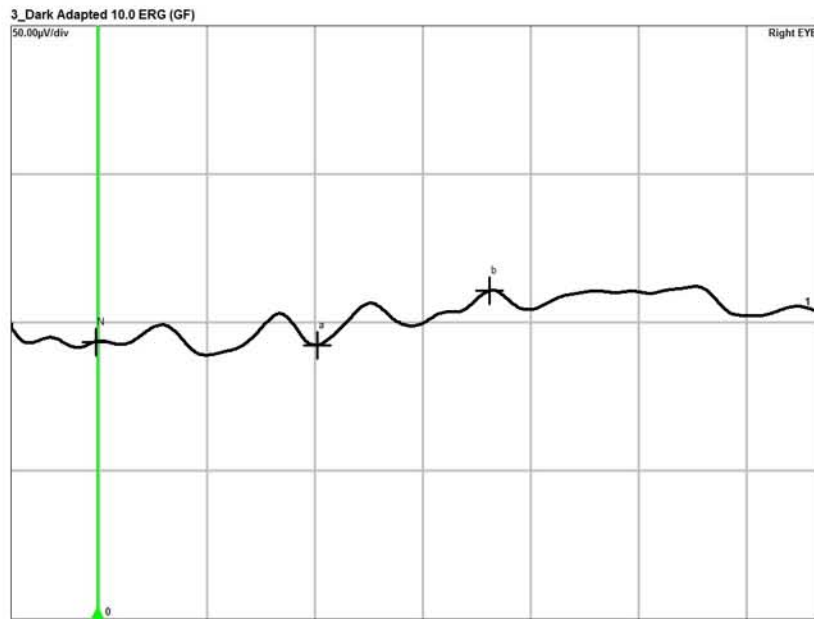
Normals	67-91	95.0µV-305µV
Channel	b [ms]	b-wave
1 L-1	129.2 (I)	200µV
2 L-2	59.9 (I)	60.2µV (I)

**2\_Dark Adapted 3.0 ERG (GF)**

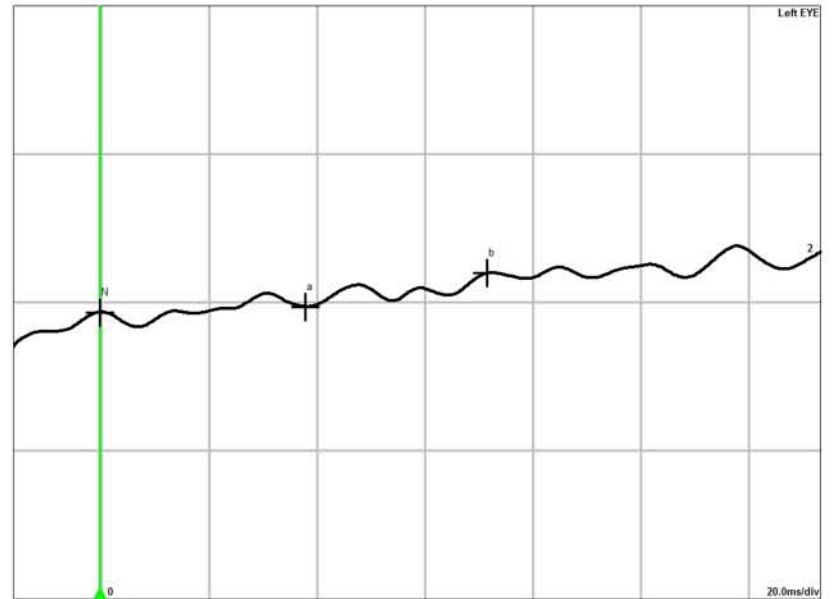


Normals	14-22	33-46	155µV-358µV	290µV-654µV	1.50-2.60
Channel	a [ms]	b [ms]	a-wave	b-wave	Da
1 L-1	38.6 (I)	31.0 (I)	27.1µV (I)	52.2µV (I)	1.93
2 L-2	34.9 (I)	67.8 (I)	14.4µV (I)	36.3µV (I)	2.51

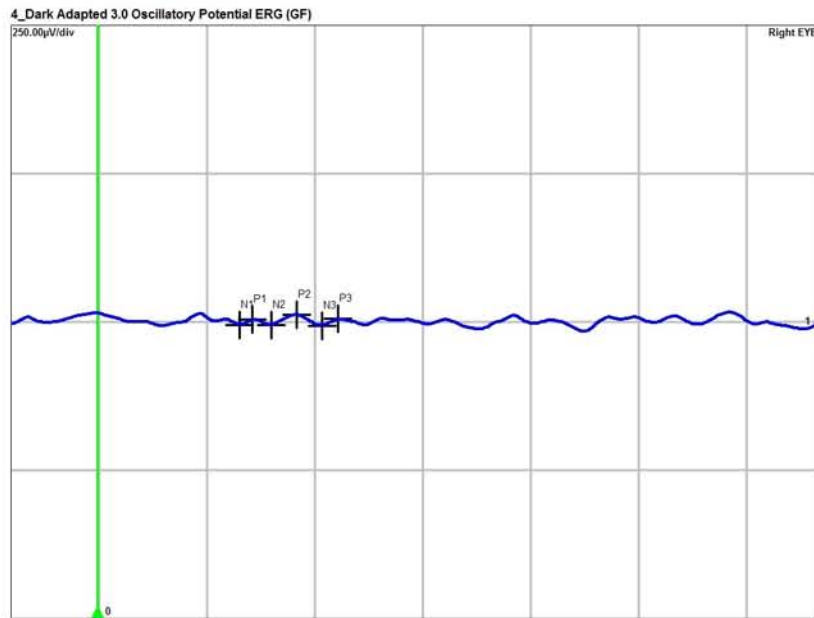
# F1: IV-17



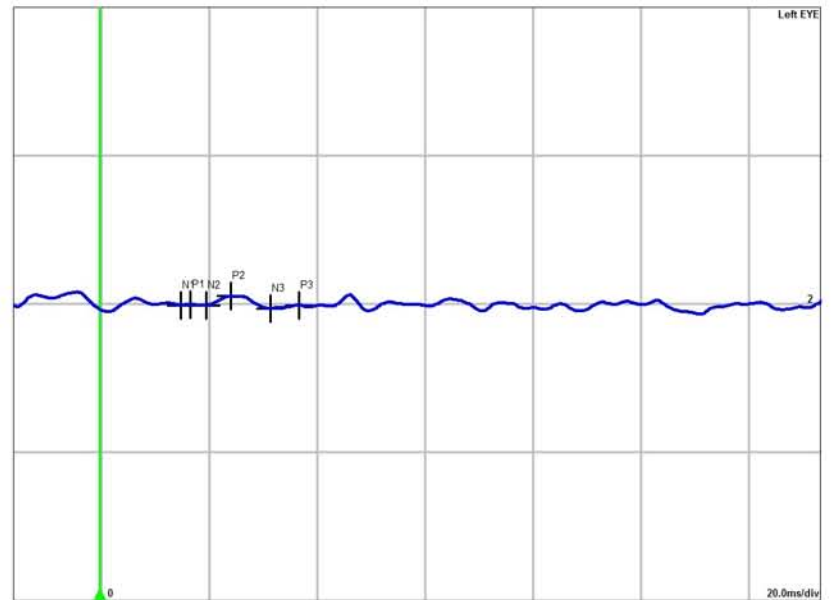
Channel	a [ms]	b [ms]	a-wave
1 R-1	40.8	72.8	1.22µV
2 L-2	38.2	71.9	1.79µV



b-wave
18.5µV
11.6µV

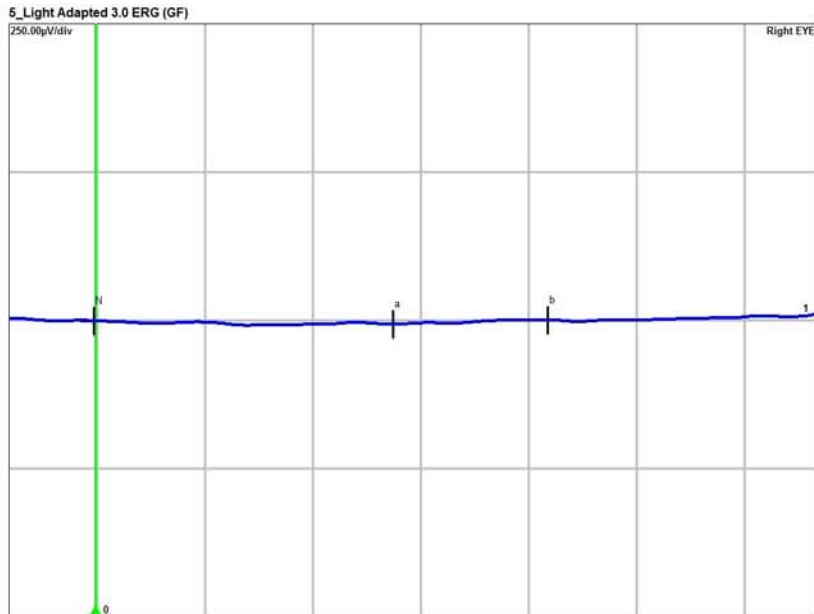


Channel	P1 [ms]	N2 [ms]	P2 [ms]	N3 [ms]	P3 [ms]
1 R-1	28.8	32.3	37.0 (I)	41.7	44.6
2 L-2	16.7	19.7	24.4 (I)	31.7	37.0
Normals			22-24		
1 R-1	-	-		-	-

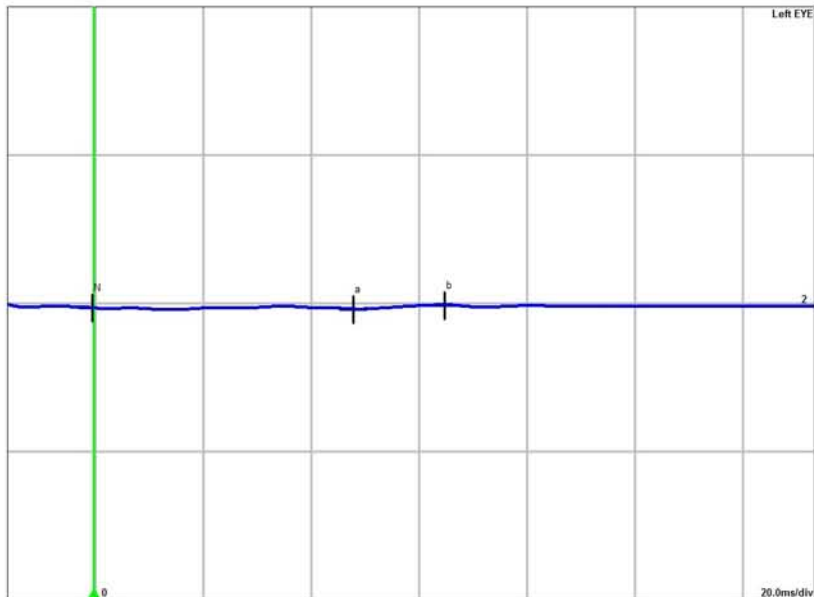


OS1	OS2	OS3	Sum OS
8.98µV (I)	17.8µV	11.1µV	37.9µV
1.32µV (I)	16.0µV	5.59µV	22.9µV
21.0µV-64.0µV			

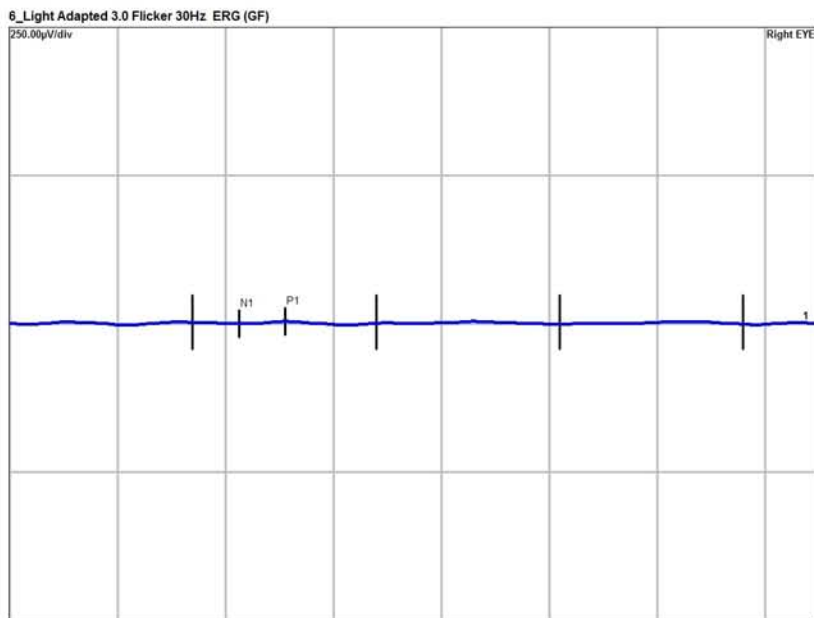
# F1: IV-17



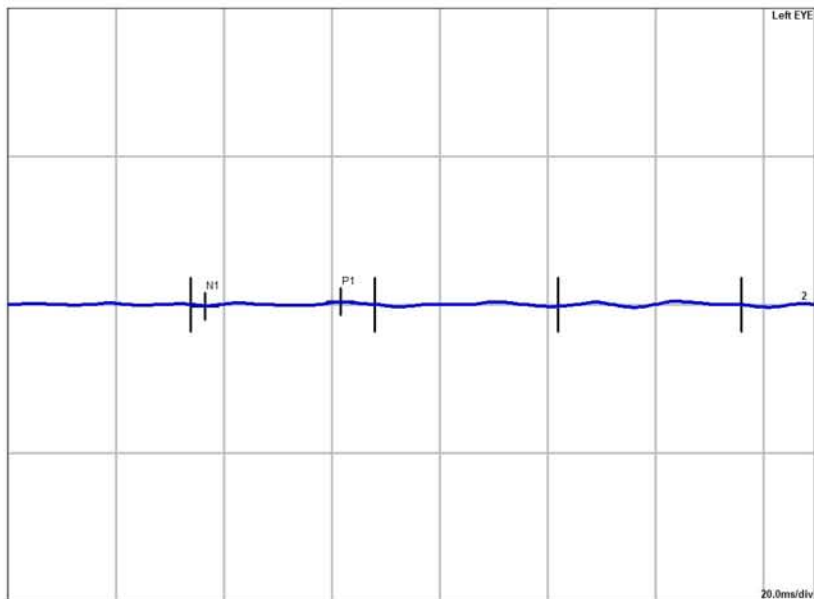
Normals	13-16	29-33	26.0µV-62.0µV
Channel	a [ms]	b [ms]	a wave
1 R-1	55.2 (f)	84.0 (f)	5.60µV (f)
2 L-2	48.1 (f)	65.2 (f)	2.08µV (f)



103µV-250µV
b wave
7.35µV (f)
6.98µV (f)



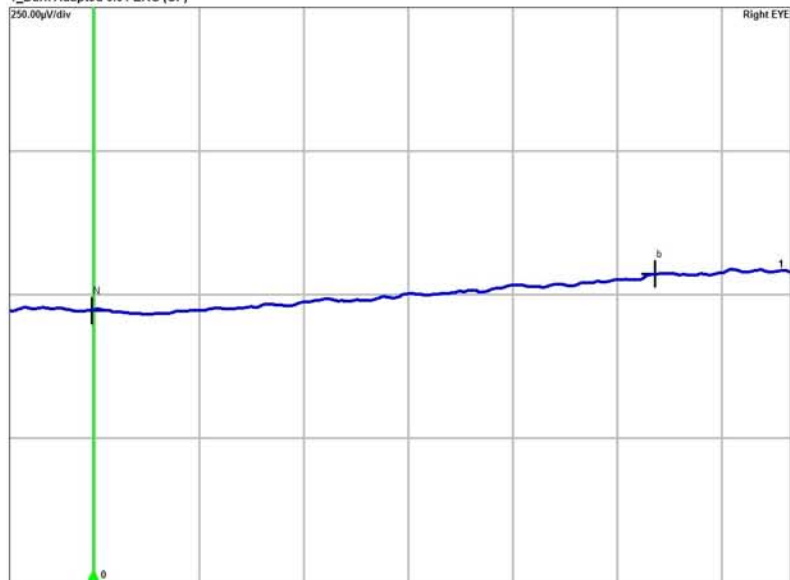
Channel	P1 [ms]	N1 - P1	30 Hz Amp
1 R-1	51.4 (f)	3.64µV (f)	1.07µV
2 L-2	61.9	7.94µV (f)	1.07µV
Normals	58-64	57.0µV-223µV	



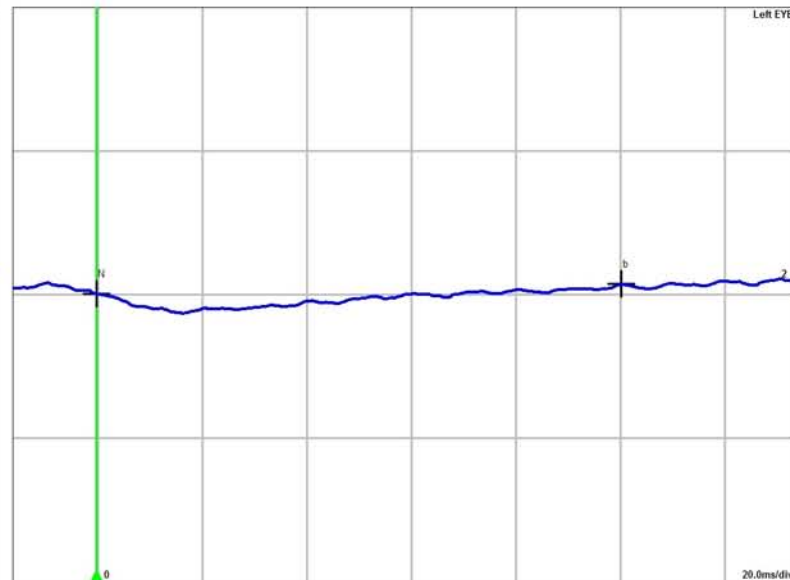
1.07µV
1.07µV

# F1: IV-18

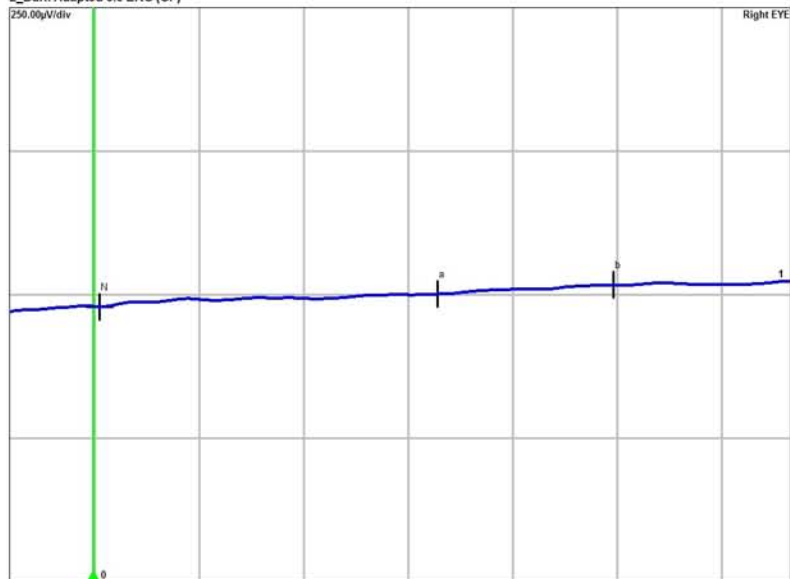
## Diagnosis: 1\_Dark Adapted 0.01 ERG (GF)



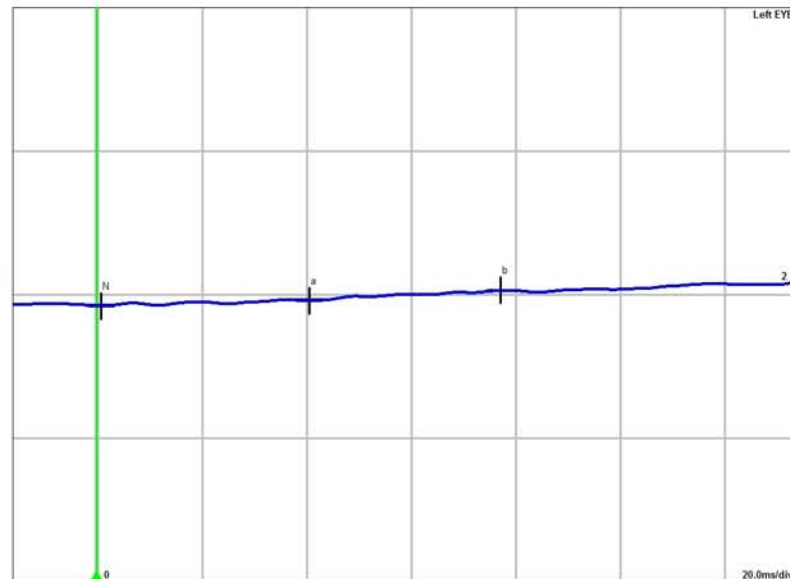
Normals	97-91	95.0µV-305µV
Channel	b [ms]	b-wave
1 R-1	107.7 (I)	63.4µV (I)
2 L-2	100.7 (I)	18.9µV (I)



## 2\_Dark Adapted 3.0 ERG (GF)

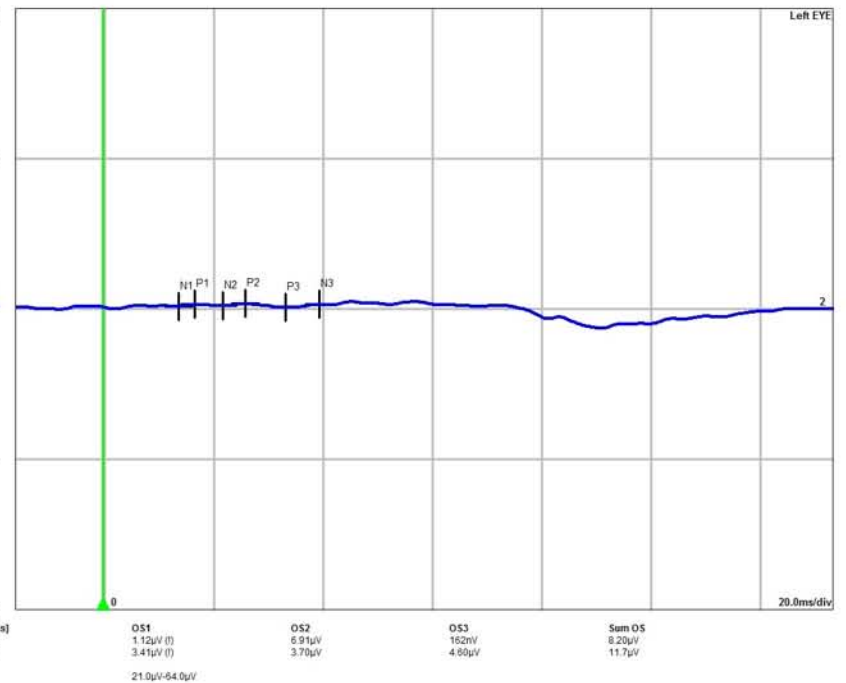
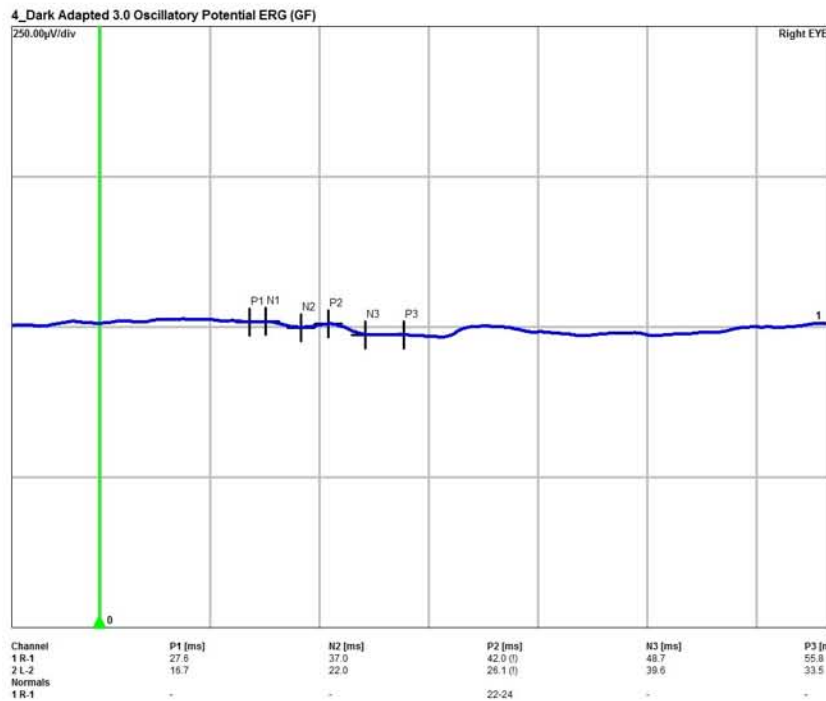
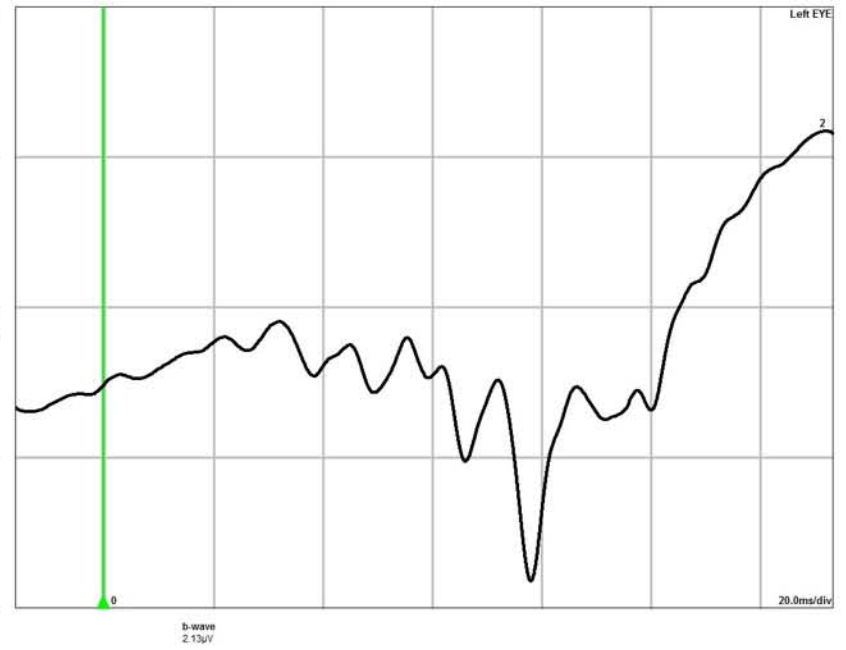
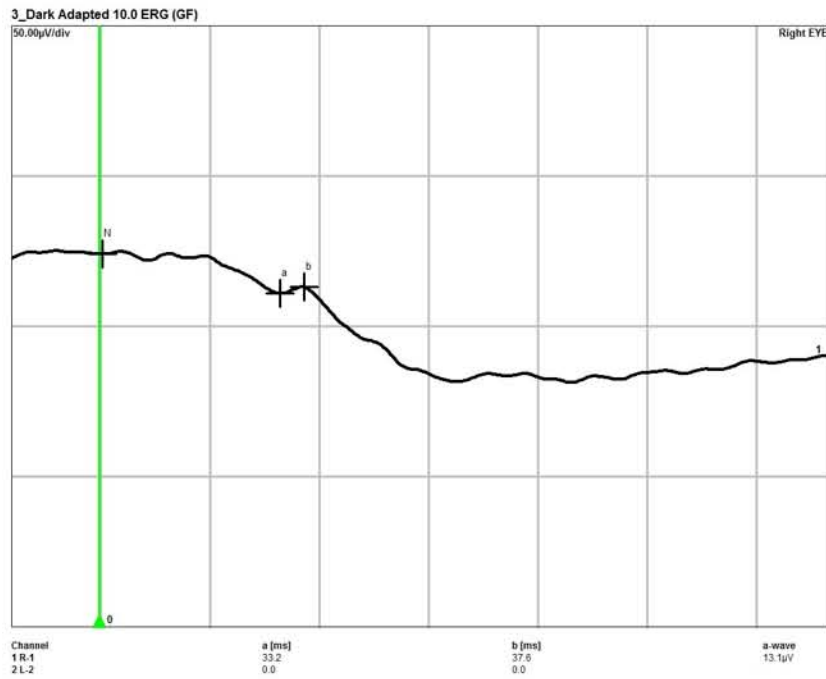


Normals	14-22	33-46	155µV-356µV
Channel	a [ms]	b [ms]	a-wave
1 R-1	66.9 (I)	99.8 (I)	23.2µV (I)
2 L-2	40.8 (I)	77.5 (I)	9.19µV (I)



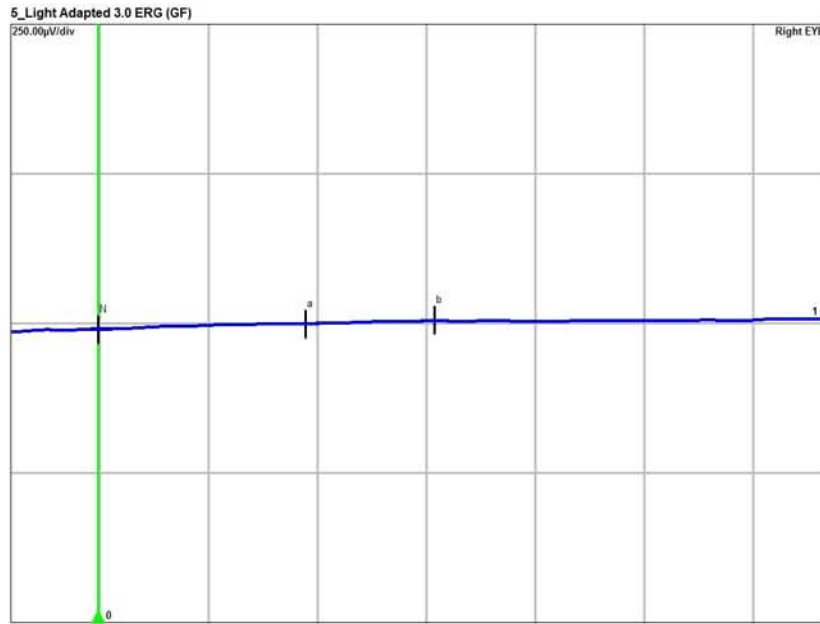
Normals	290µV-654µV	1.50-2.60
Channel	b-wave	b/a
1 R-1	15.5µV (I)	0.967 (I)
2 L-2	17.7µV (I)	1.93

# F1: IV-18

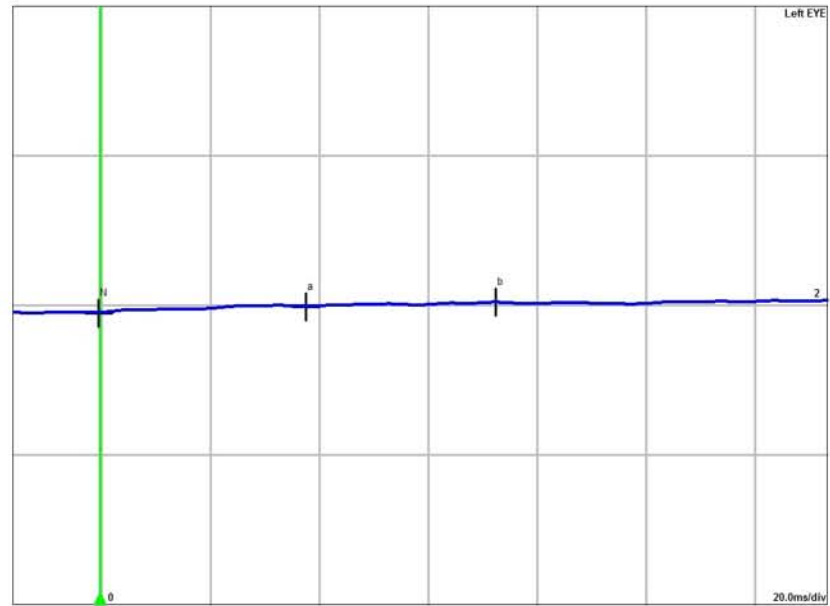




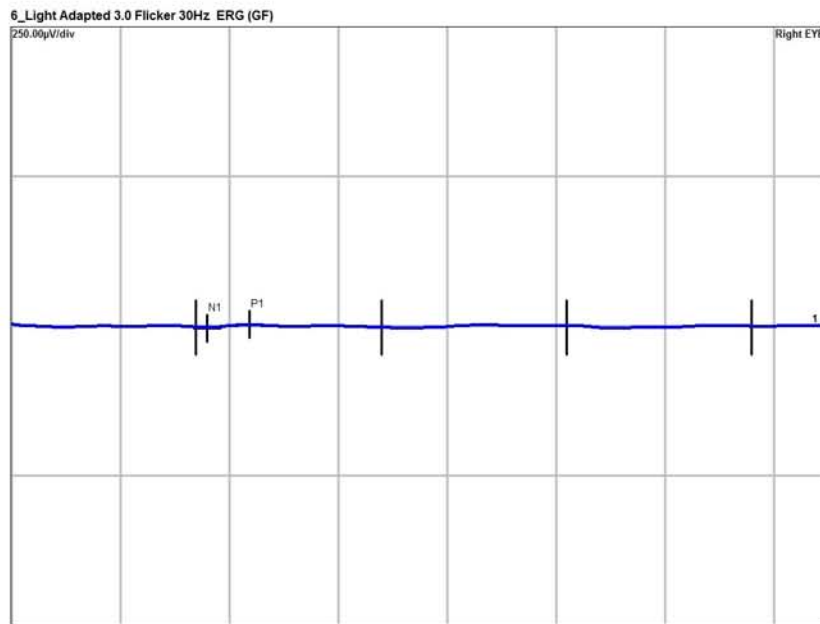
# F1: IV-18



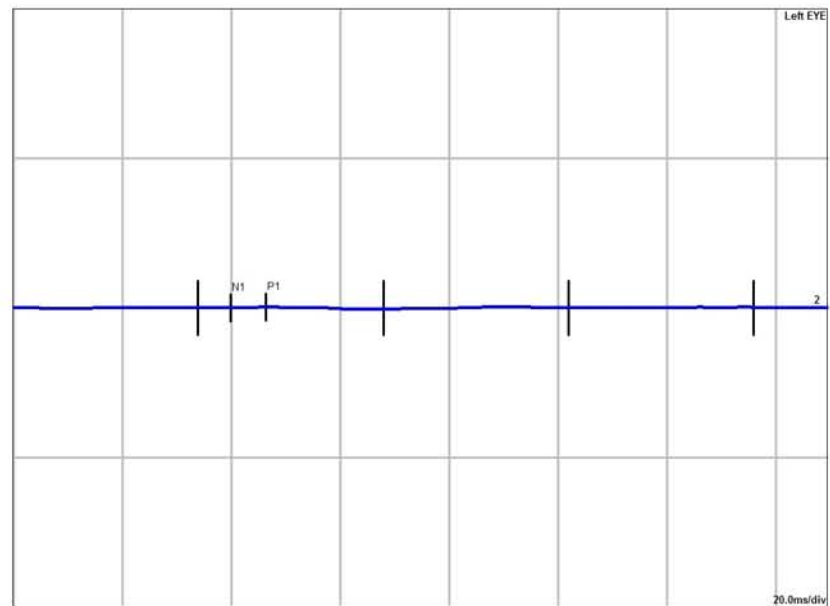
Normals	13-18	25-33	25.0µV-62.0µV
Channel	a [ms]	b [ms]	a-wave
1 R-1	38.2 (I)	61.9 (I)	8.65µV (I)
2 L-2	37.9 (I)	72.8 (I)	10.2µV (I)



10.0µV-250µV
b-wave
6.86µV (I)
8.10µV (I)

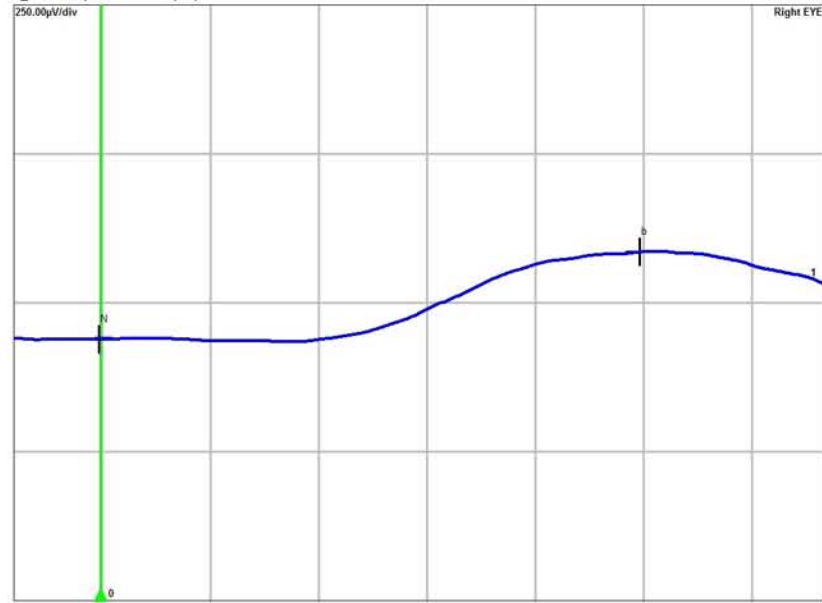


Channel	P1 [ms]	N1 - P1	30 Hz Amp
1 R-1	44.0 (I)	5.78µV (I)	902µV
2 L-2	46.7 (I)	1.74µV (I)	769µV
Normals	58-64	57.0µV-223µV	
1 R-1			

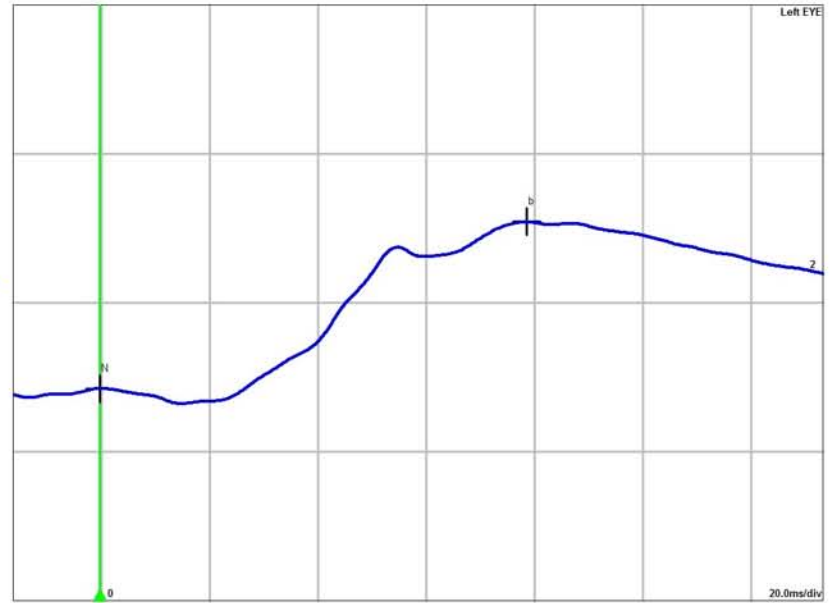


# F1: V-6

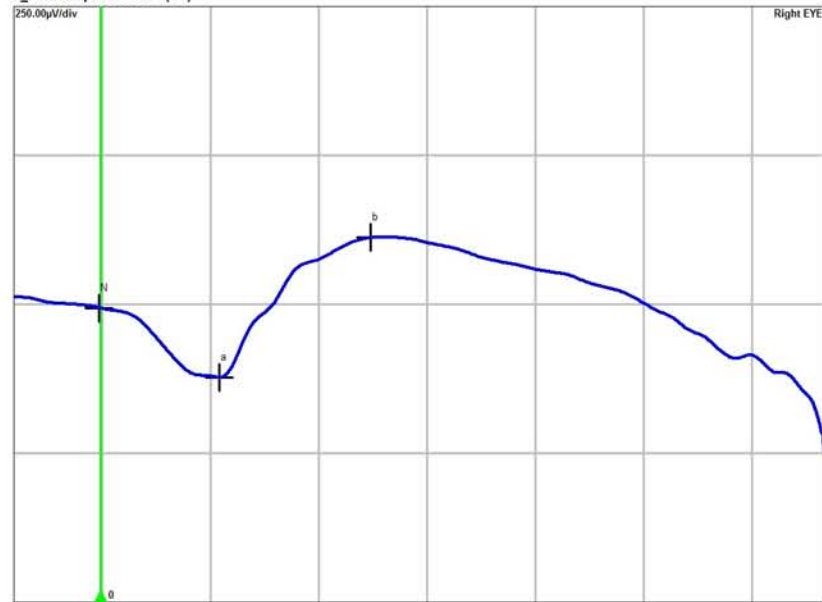
## Diagnosis: 1\_Dark Adapted 0.01 ERG (GF)



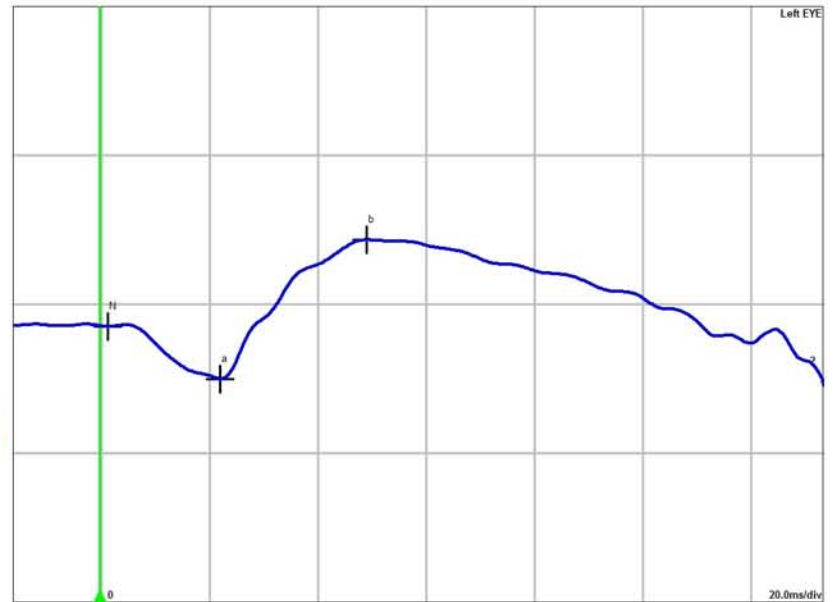
Normals	67-91	95.0µV-305µV
Channel	b [ms]	b-wave
1 R-1	99.8 (I)	145µV
2 L-2	79.0	280µV



## 2\_Dark Adapted 3.0 ERG (GF)



Normals	14-22	33-46	155µV-356µV
Channel	a [ms]	b [ms]	a-wave
1 R-1	22.9 (I)	49.9 (I)	117µV (I)
2 L-2	22.3 (I)	49.3 (I)	87.6µV (I)



Normals	290µV-654µV	1.50-2.60
b-wave	b-wave	b/a
235µV (I)	234µV (I)	2.81
234µV (I)		2.67