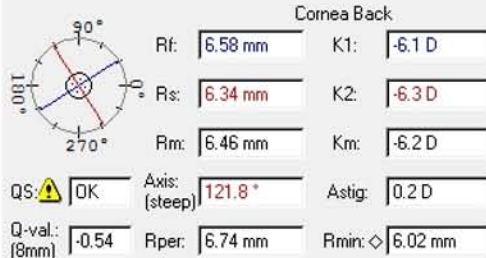
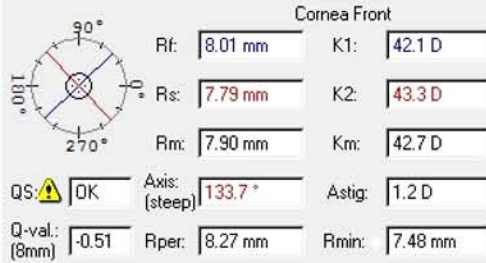
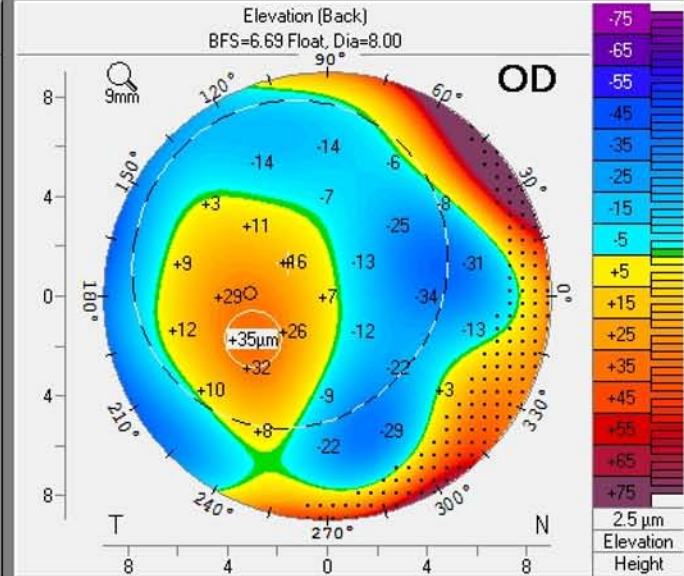
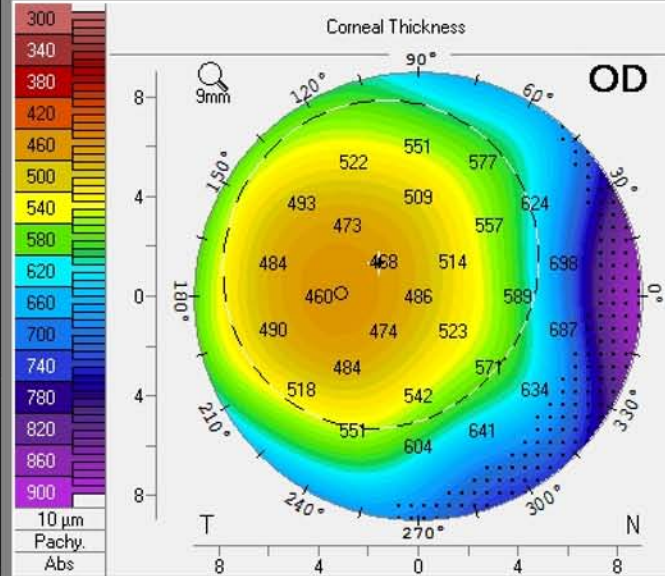
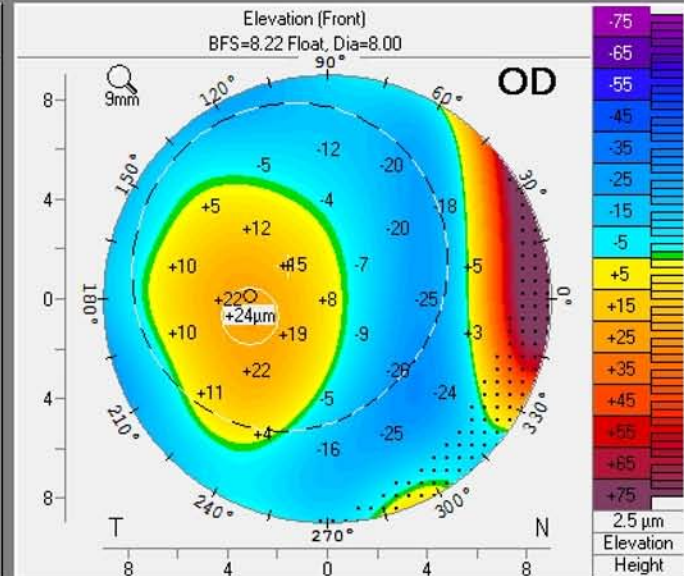
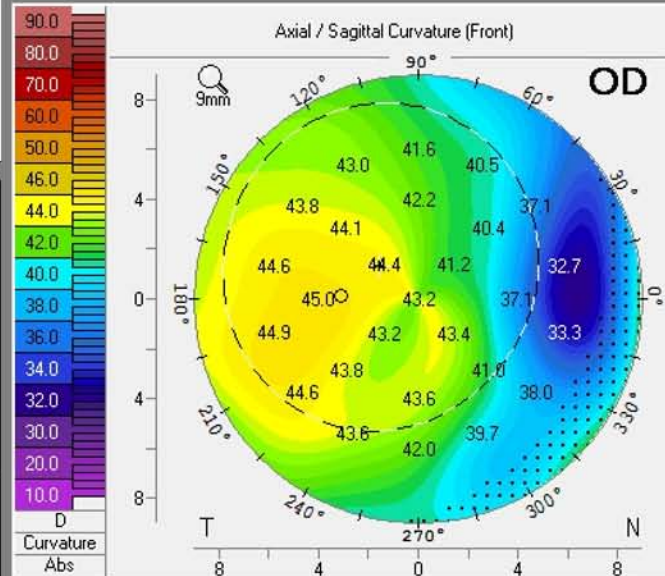


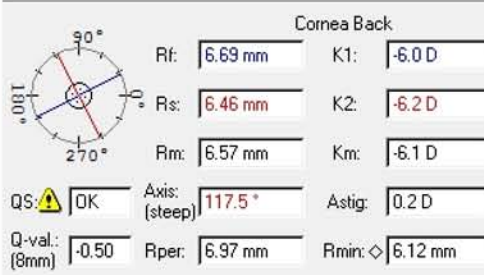
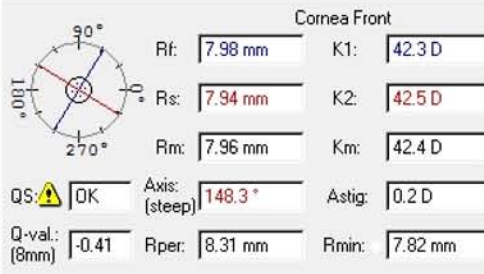
F1: IV-7 (OD)



Refractive

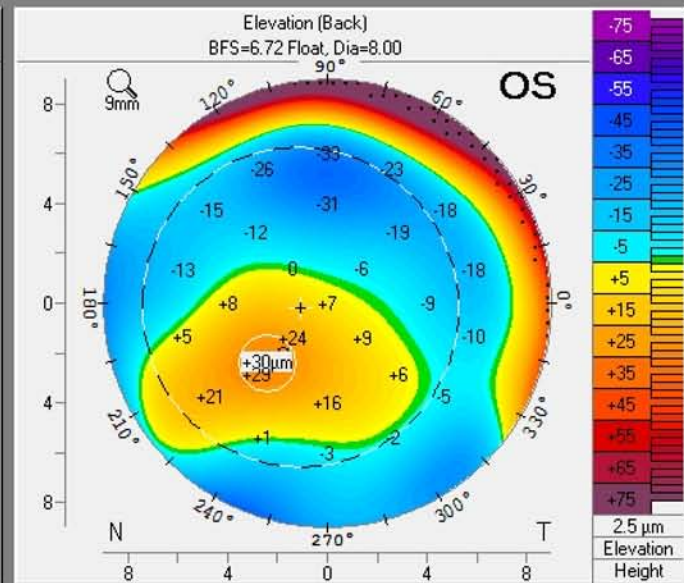
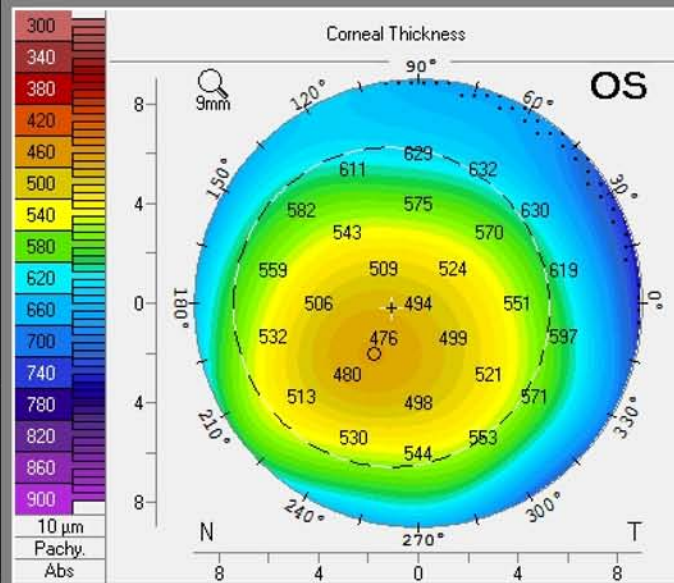
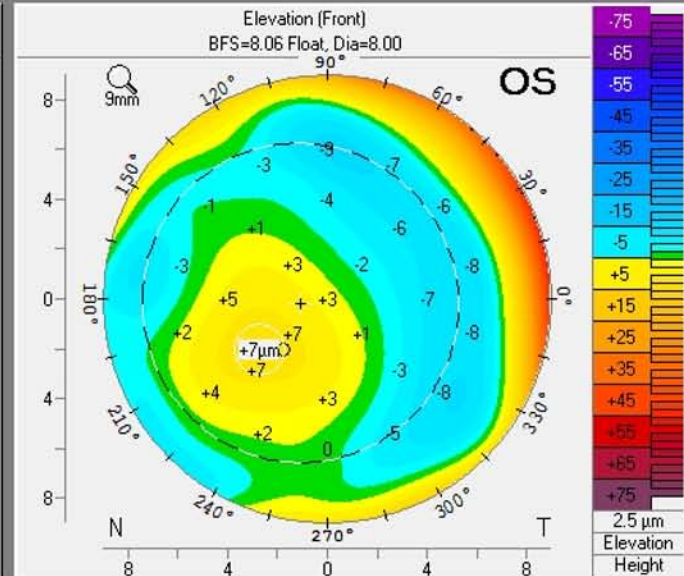
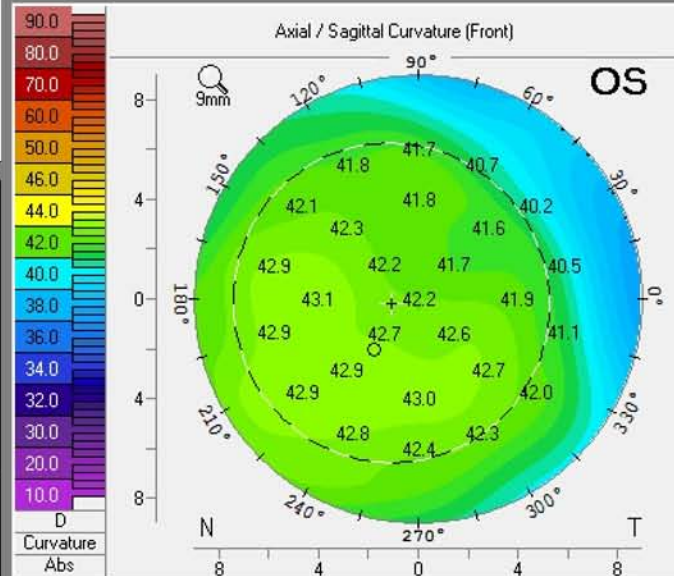


F1: IV-7 (OS)

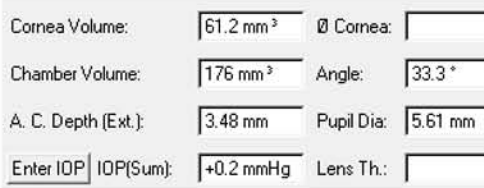
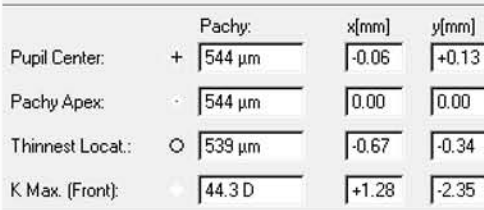
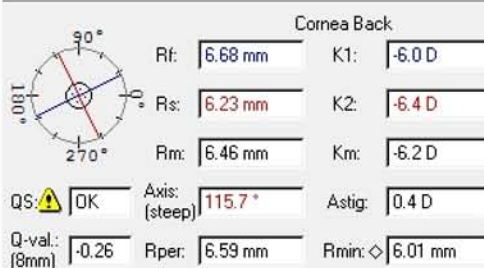


Pupil Center:	+	Pachy:	487 μm	x[mm]	-0.55	y[mm]	-0.08
Pachy Apex:	-		494 μm		0.00		0.00
Thinnest Locat.:	○		474 μm		-0.88		-1.01
K Max. (Front):			43.1 D		-2.36		+0.07
Cornea Volume:		∅ Cornea:	55.3 mm ³				
Chamber Volume:		Angle:	159 mm ³		28.3°		
A. C. Depth (Ext.):		Pupil Dia:	3.22 mm		6.38 mm		
Enter IOP	IOP(Sum):	Lens Th.:	+2.2 mmHg				

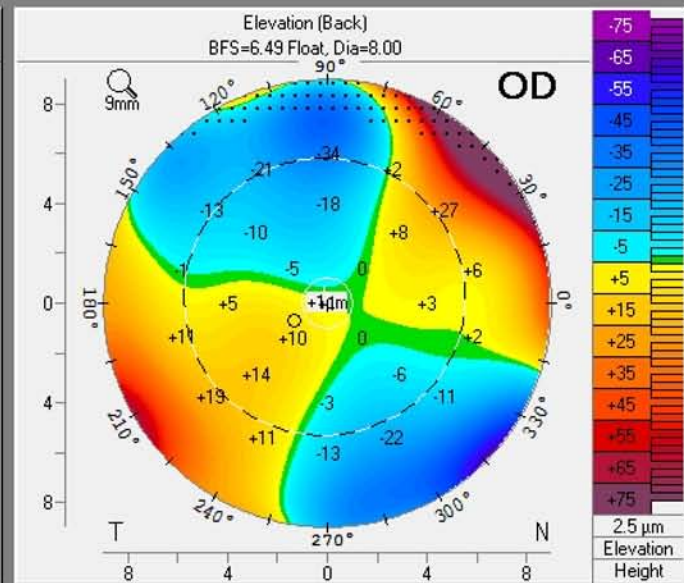
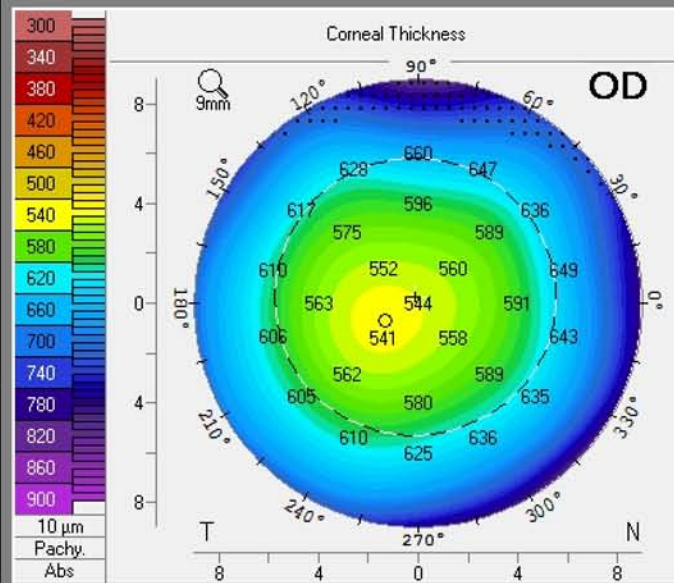
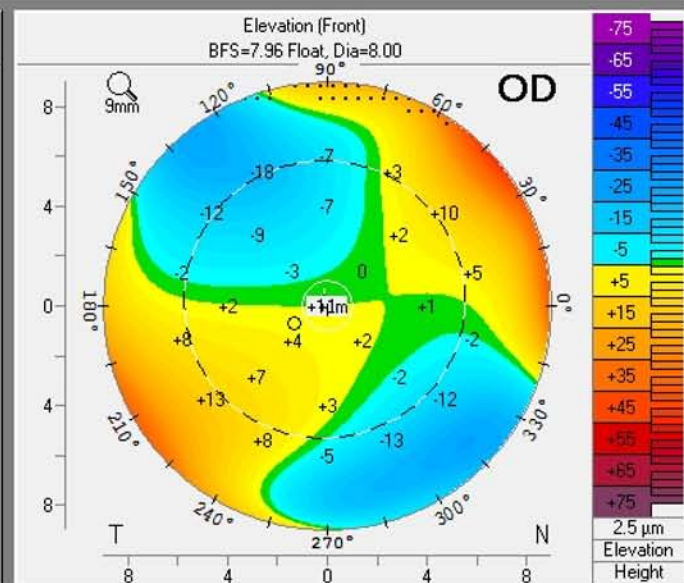
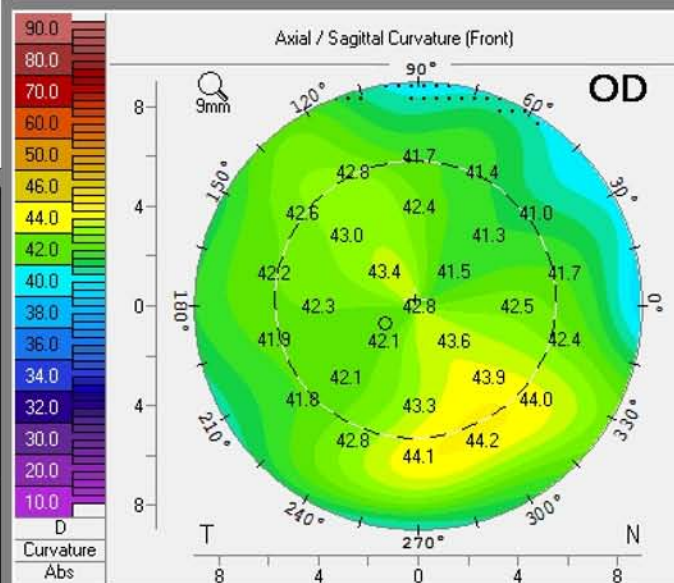
Refractive



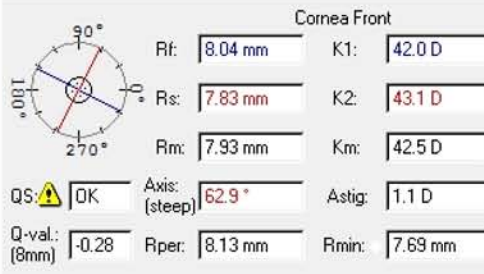
F1: IV-8 (OD)



Refractive

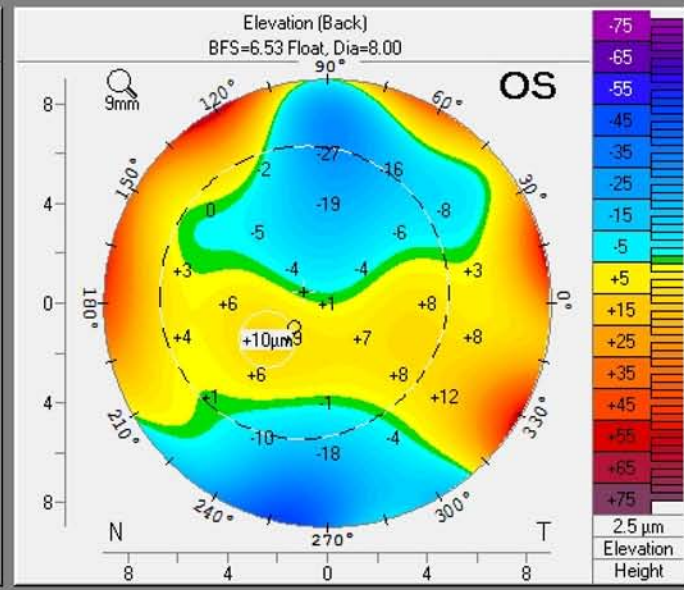
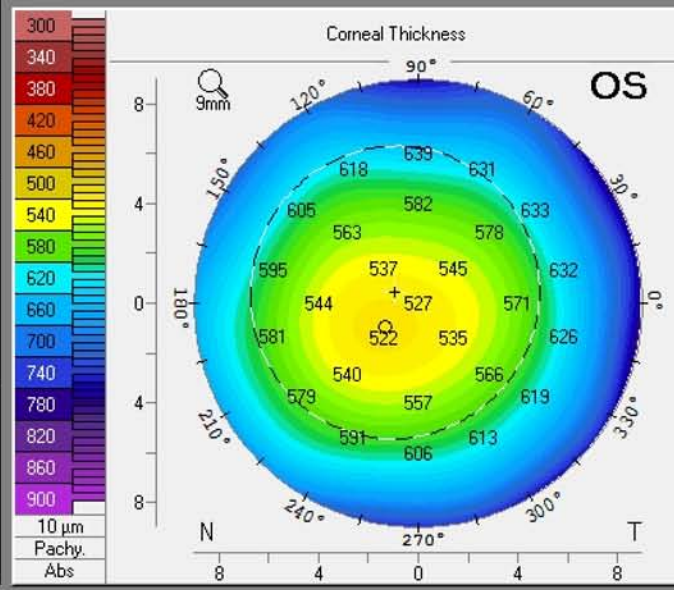
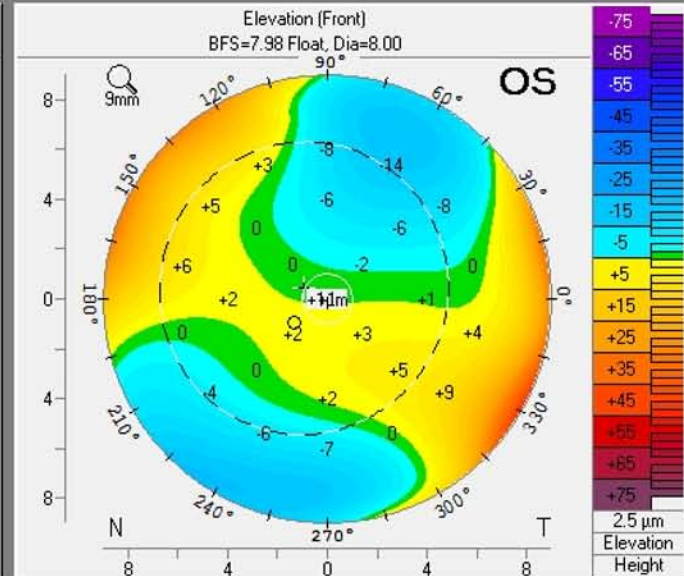
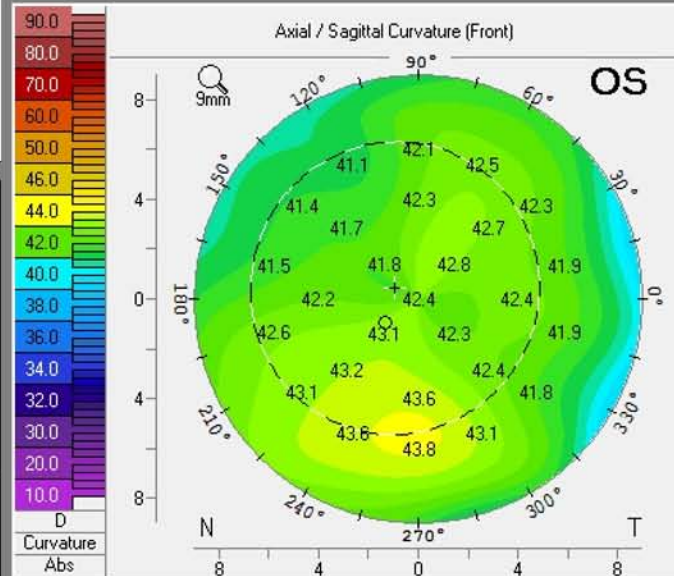


F1: IV-8 (OS)

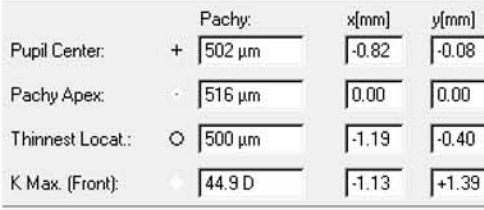
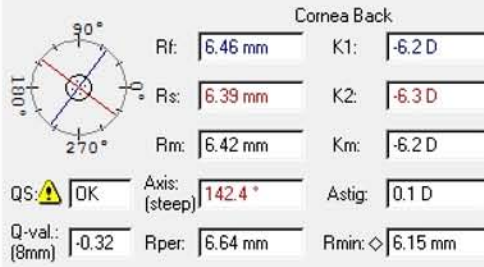
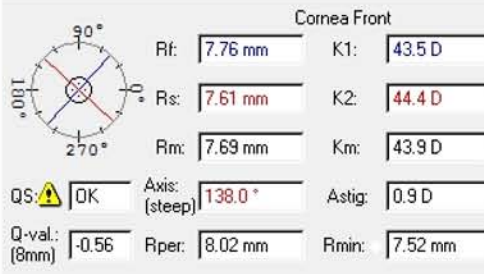


Pupil Center:	+	527 μm	x[mm]	-0.47	y[mm]	+0.22
Pachy Apex:	-	527 μm		0.00		0.00
Thinnest Locat.:	○	521 μm		-0.67		-0.47
K Max. (Front):	+	43.9 D		-0.13		-2.75
Cornea Volume:		59.4 mm ³	∅ Cornea:			
Chamber Volume:		171 mm ³	Angle:			30.6°
A. C. Depth (Ext.):		3.49 mm	Pupil Dia:			5.83 mm
Enter IOP	IOP(Sum):	+0.9 mmHg	Lens Th.:			3.41 mm

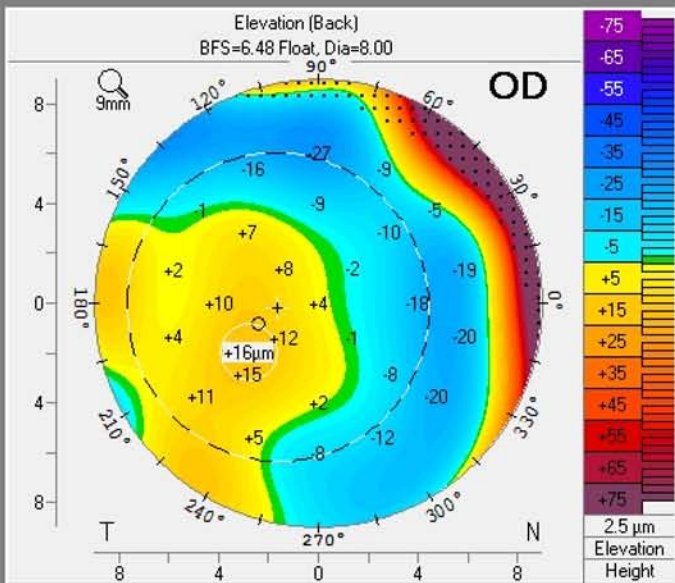
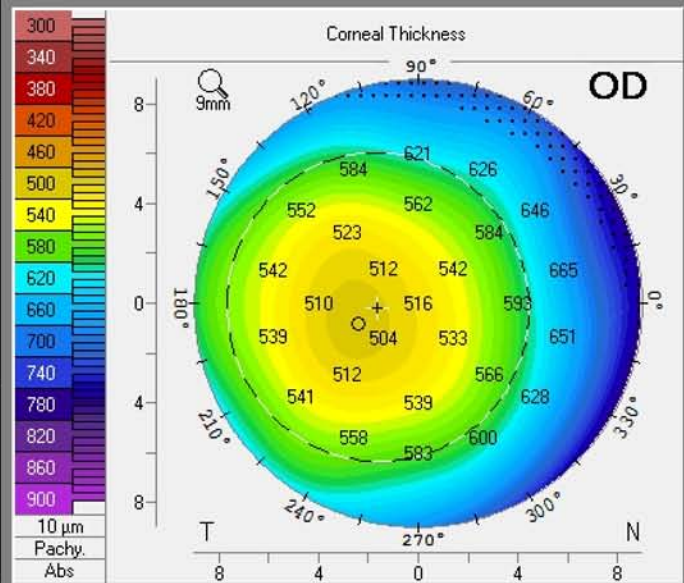
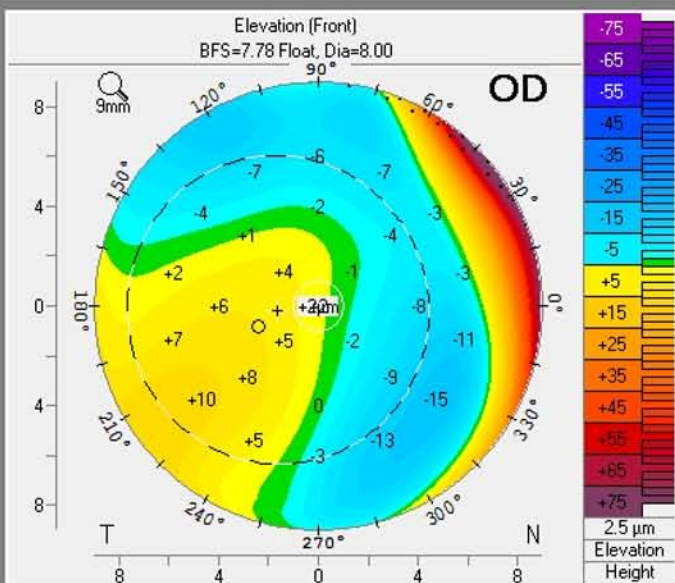
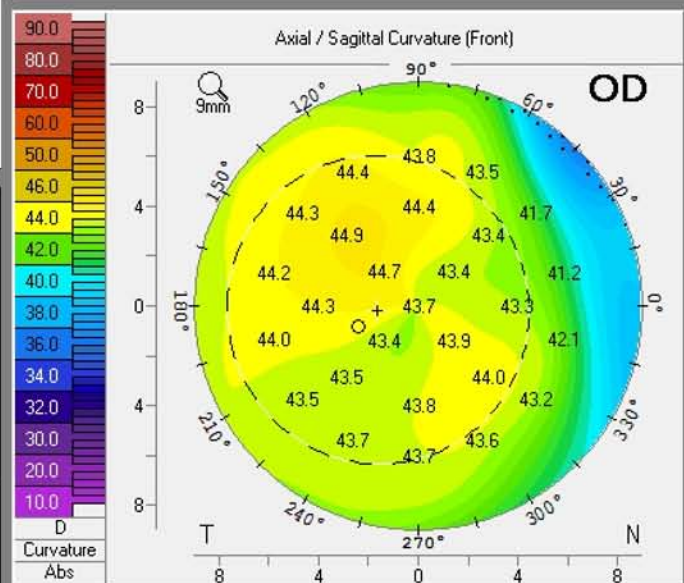
Refractive



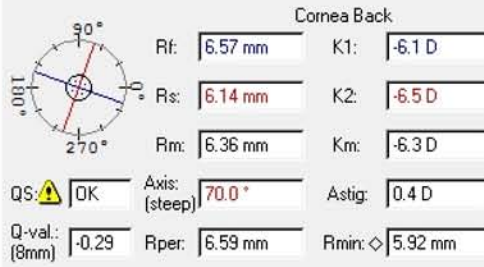
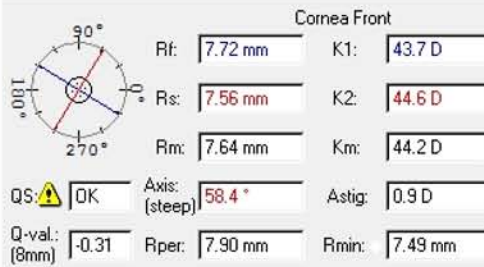
F1: IV-16 (OD)



Refractive

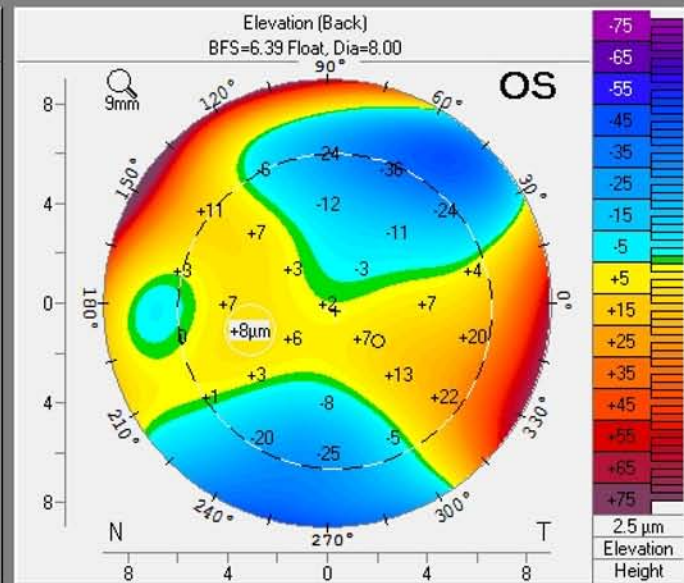
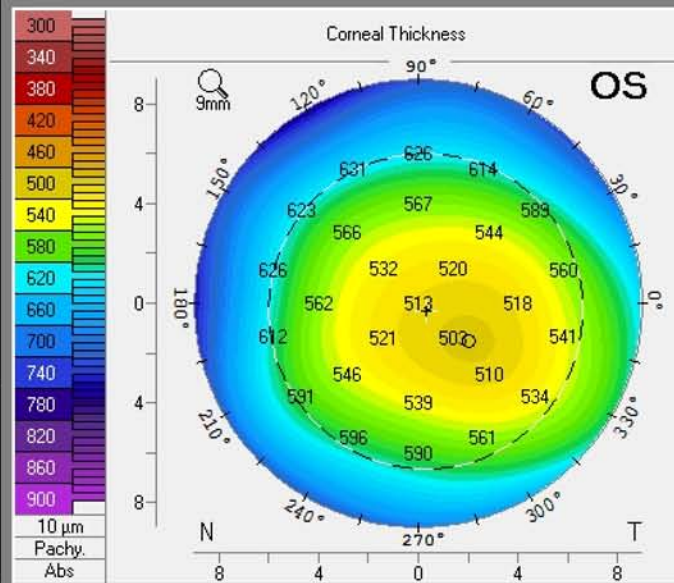
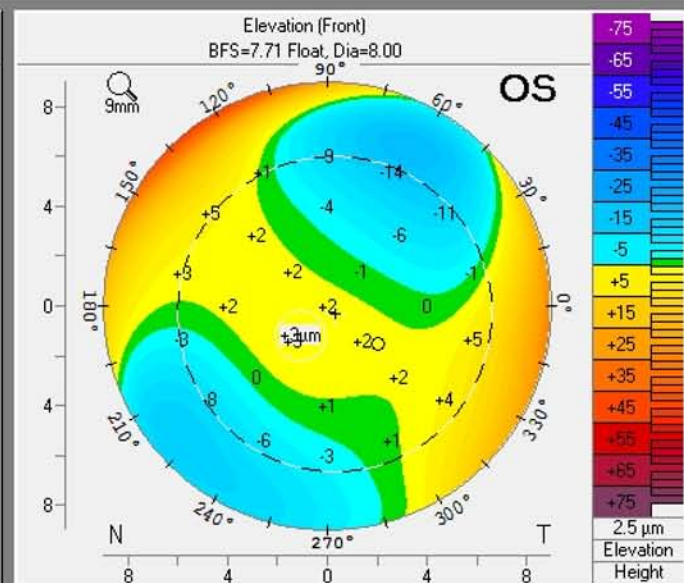
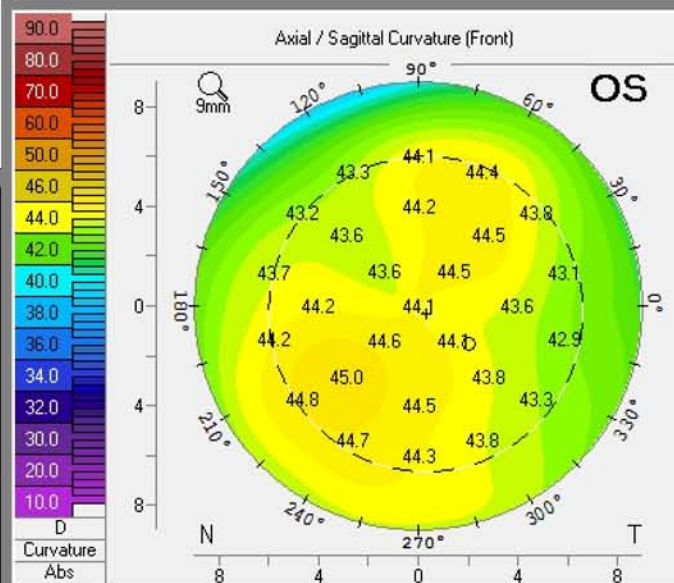


F1: IV-16 (OS)



Pupil Center:	+ 510 μm	x[mm]	+0.15	y[mm]	-0.16
Pachy Apex:	513 μm		0.00		0.00
Thinnest Locat.:	502 μm		+1.02		-0.75
K Max. (Front):	45.1 D		-1.69		-1.49
Cornea Volume:	58.0 mm ³	∅ Cornea:	10.7 mm		
Chamber Volume:	148 mm ³	Angle:	26.2°		
A. C. Depth (Ext.):	2.91 mm	Pupil Dia:	6.31 mm		
Enter IOP	IOP(Sum): +1.5 mmHg	Lens Th.:	4.76 mm		

Refractive



F1: IV-17 (OD)

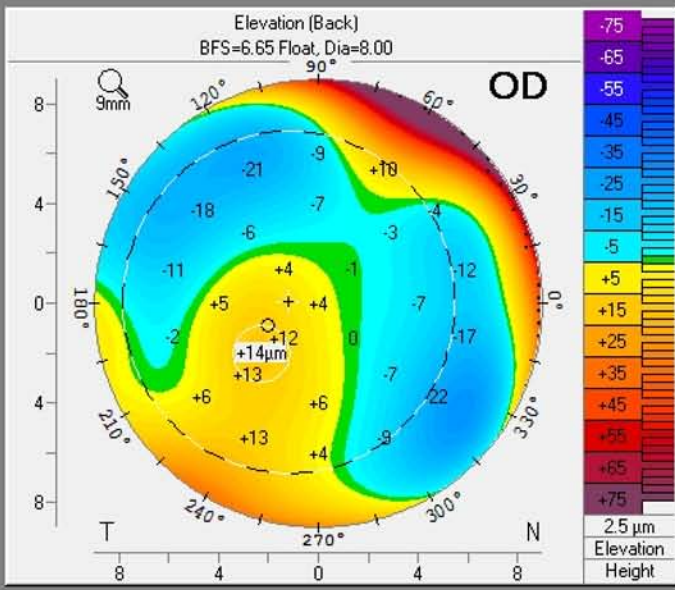
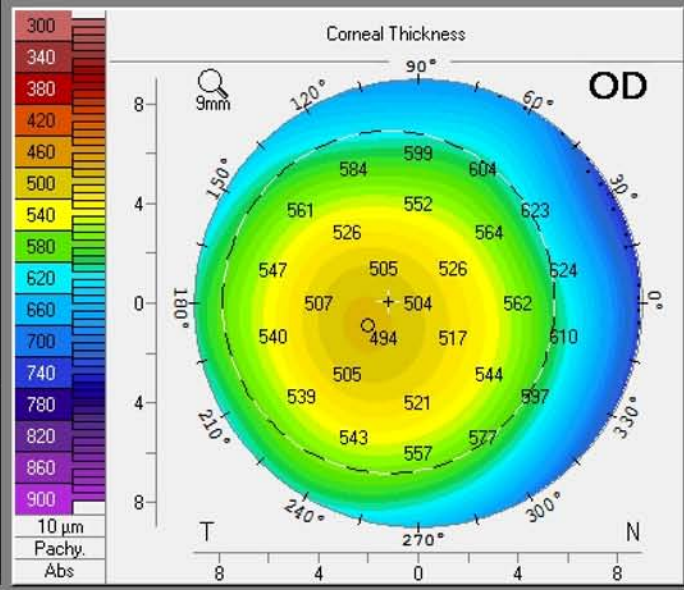
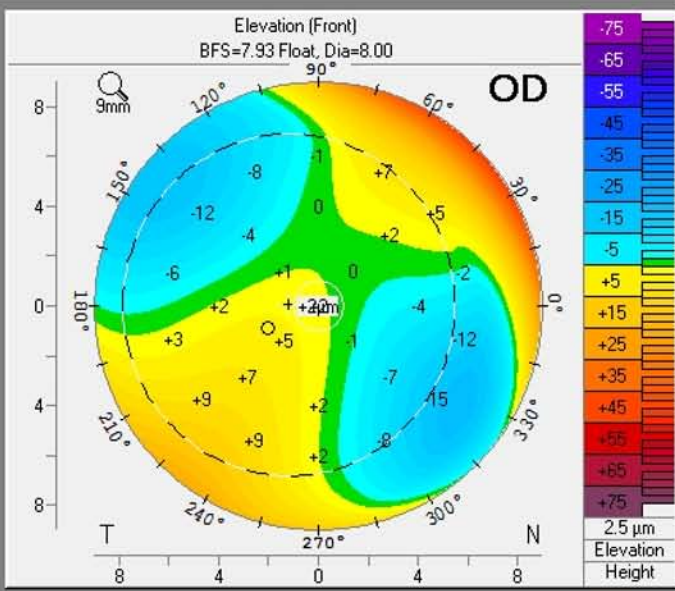
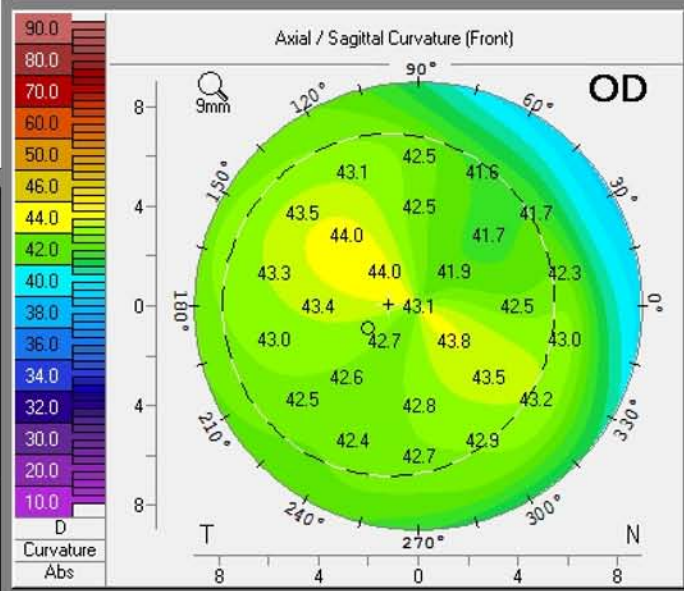
Cornea Front			
Rf:	8.00 mm	K1:	42.2 D
Rs:	7.69 mm	K2:	43.9 D
Rm:	7.84 mm	Km:	43.0 D
Axis: (steep)	142.6°	Astig:	1.7 D
Q-val: (8mm)	-0.33	Rper:	8.11 mm
		Rmin:	7.65 mm

Cornea Back			
Rf:	6.67 mm	K1:	-6.0 D
Rs:	6.42 mm	K2:	-6.2 D
Rm:	6.55 mm	Km:	-6.1 D
Axis: (steep)	133.6°	Astig:	0.2 D
Q-val: (8mm)	-0.36	Rper:	6.88 mm
		Rmin:	6.25 mm

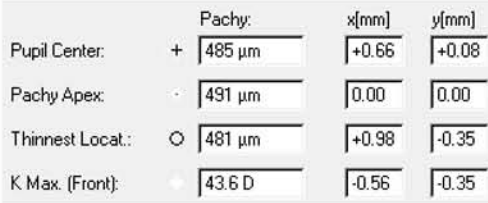
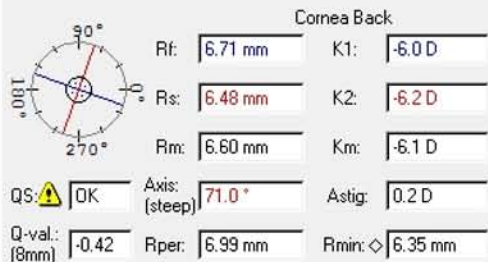
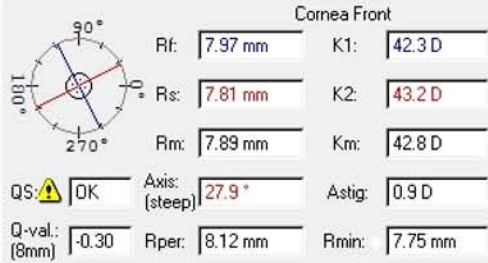
Pachy			
Pupil Center:	+ 496 μm	x[mm]	-0.60
		y[mm]	+0.02
Pachy Apex:	504 μm		0.00
Thinnest Locat.:	492 μm		-1.00
			-0.43
K Max. (Front):	44.1 D		-1.07
			+0.79

Cornea Volume:	55.1 mm ³	∅ Cornea:	11.8 mm
Chamber Volume:	196 mm ³	Angle:	38.6°
A. C. Depth (Ext.):	3.19 mm	Pupil Dia:	6.76 mm
Enter IOP IOP(Sum):	+1.8 mmHg	Lens Th.:	4.64 mm

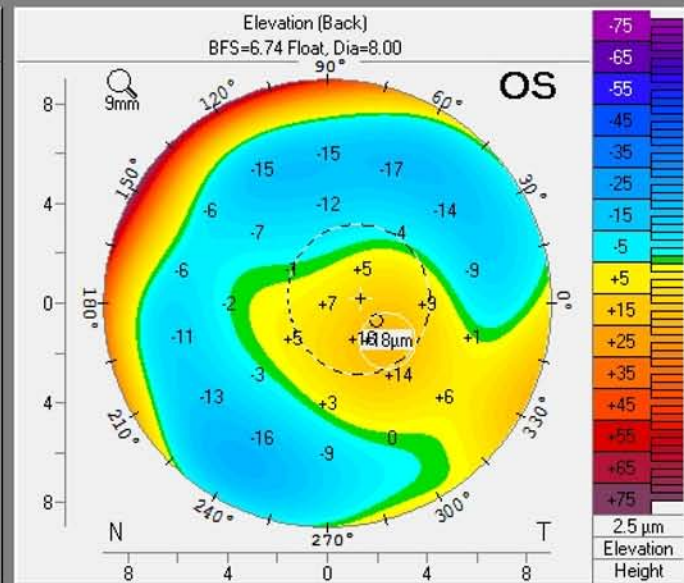
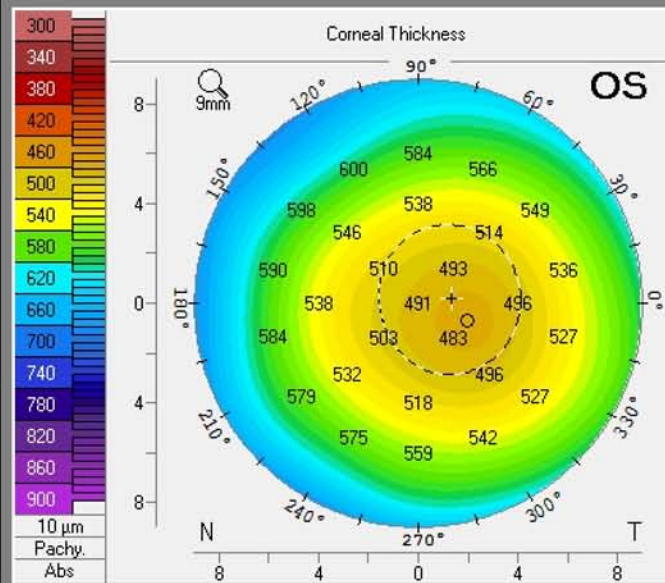
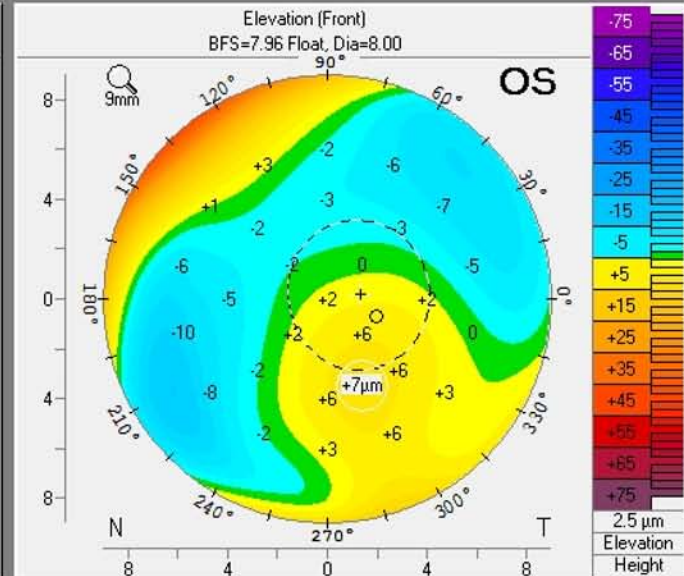
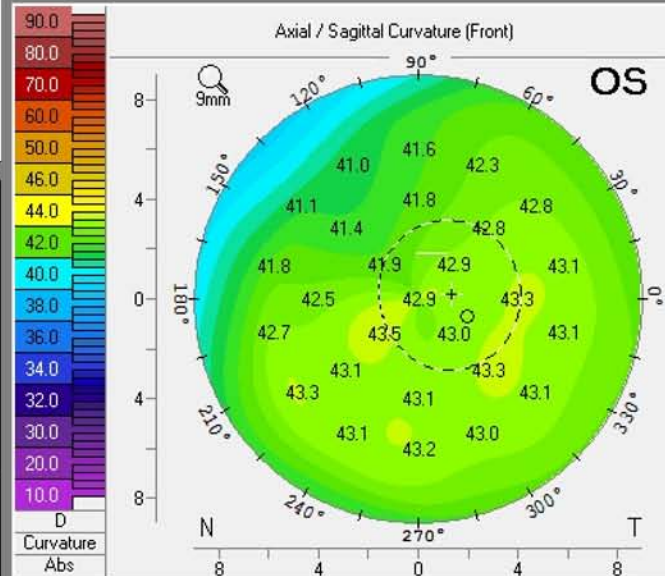
Refractive



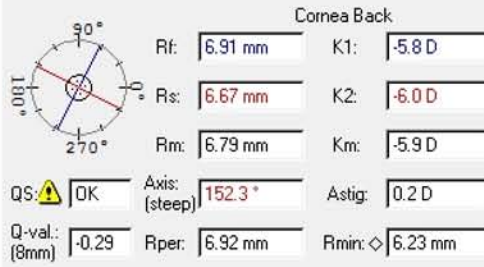
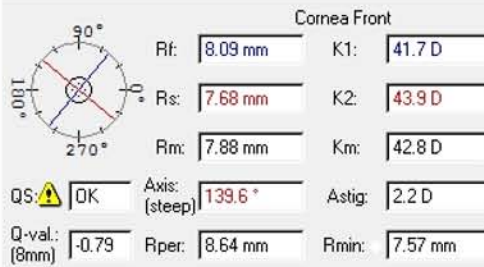
F1: IV-17 (OS)



Refractive



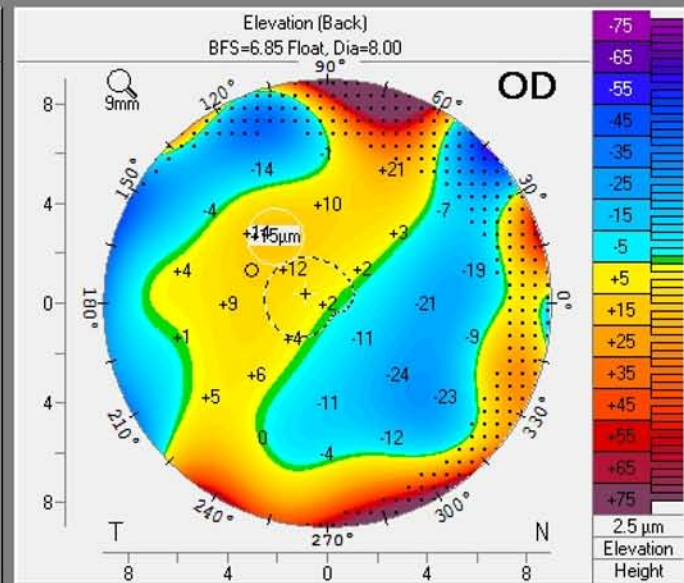
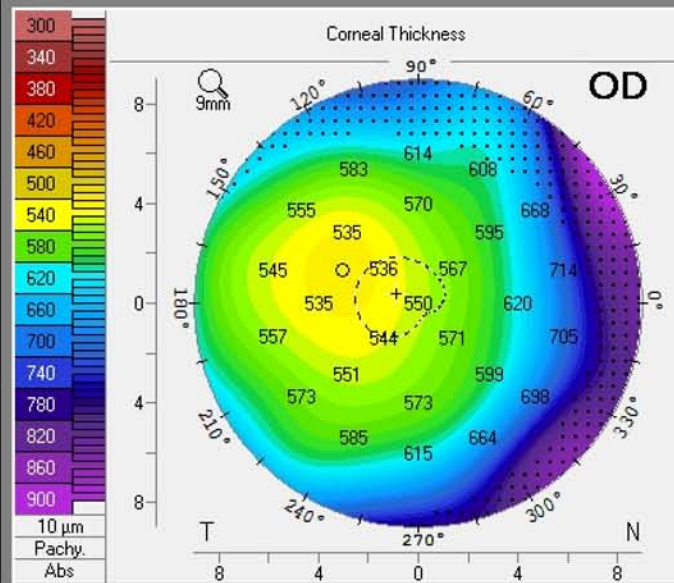
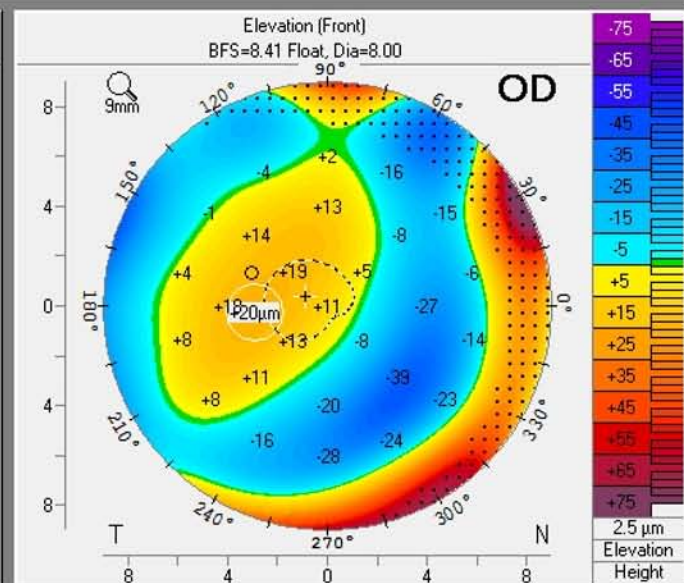
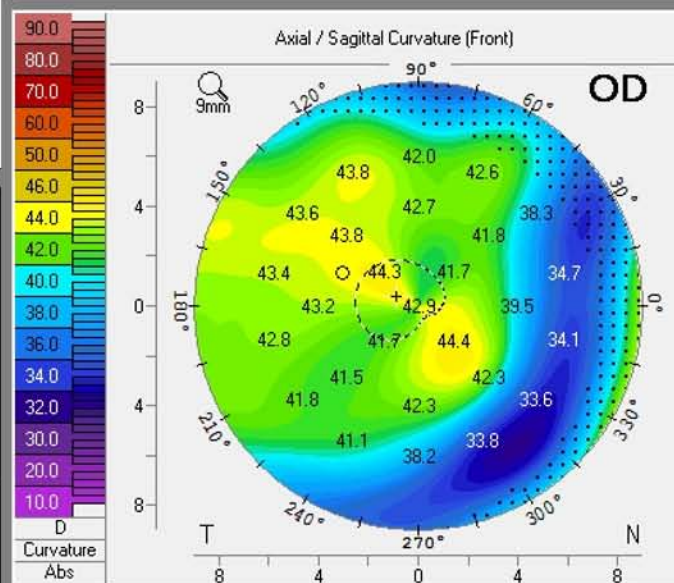
F1: IV-18 (OD)



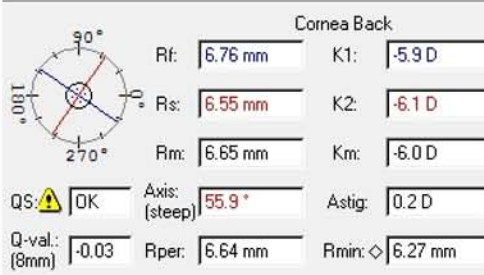
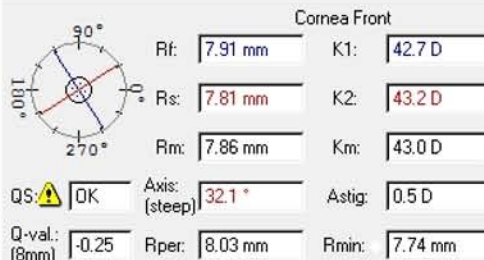
Pupil Center:	+	541 μm	x[mm]	-0.44	y[mm]	+0.18
Pachy Apex:	-	550 μm		0.00		0.00
Thinnest Locat.:	○	530 μm		-1.52		+0.67
K Max. (Front):	+	44.6 D		+0.79		-1.03

Cornea Volume:	58.5 mm ³	∅ Cornea:	
Chamber Volume:	209 mm ³	Angle:	39.5°
A. C. Depth (Ext.):	2.52 mm	Pupil Dia:	1.64 mm
Enter IOP	IOP(Sum): ±0.0 mmHg	Lens Th.:	

Refractive



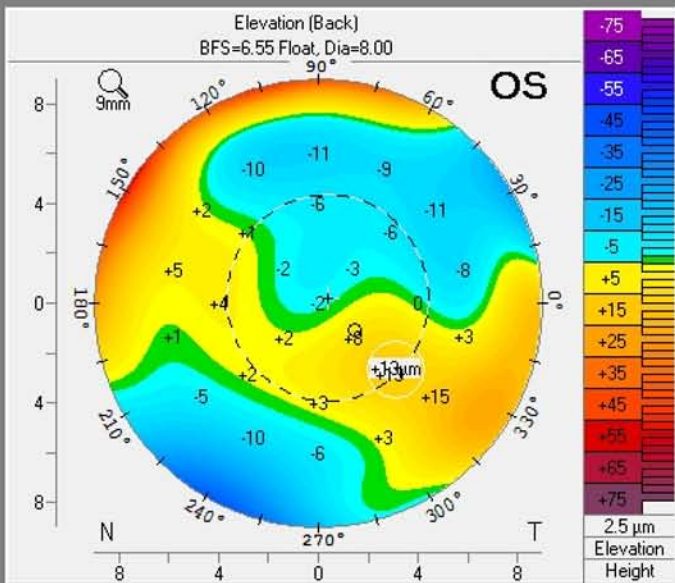
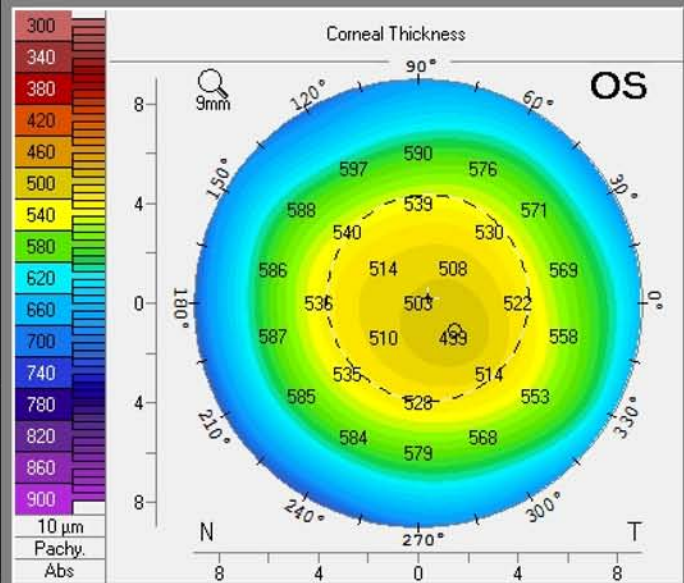
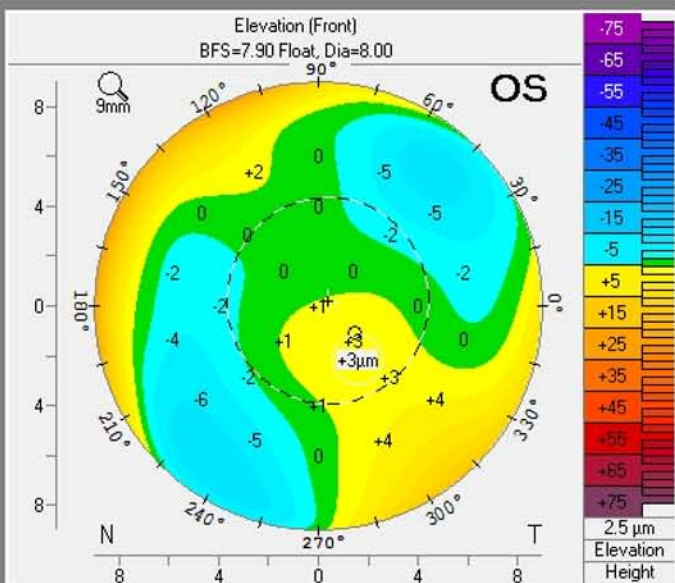
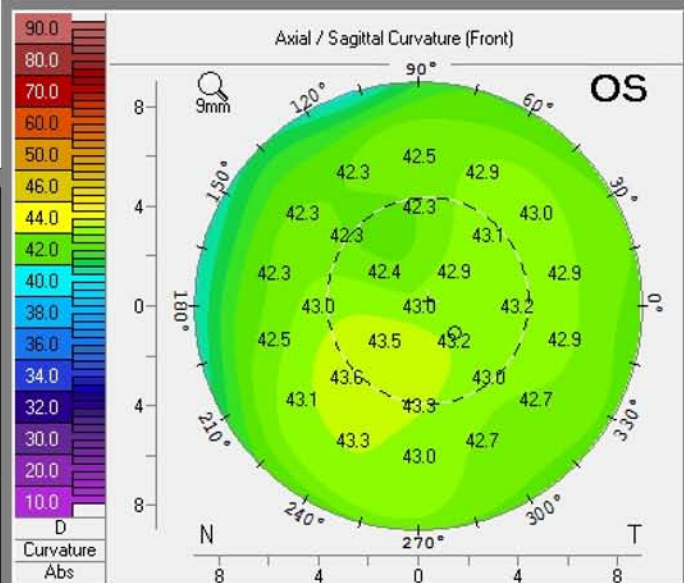
F1: IV-18 (OS)



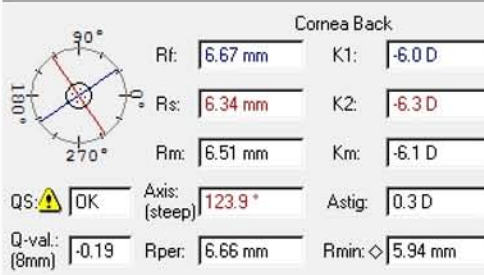
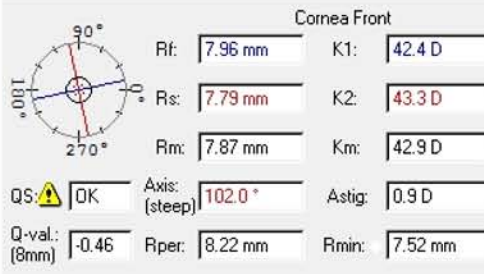
Pupil Center:	+	503 μm	x[mm]	+0.19	y[mm]	+0.10
Pachy Apex:	-	503 μm		0.00		0.00
Thinnest Locat.:	○	499 μm		+0.74		-0.54
K Max. (Front):		43.6 D		-0.81		-1.41

Cornea Volume:	56.5 mm ³	∅ Cornea:	12.0 mm
Chamber Volume:	254 mm ³	Angle:	56.9°
A. C. Depth (Ext.):	5.25 mm	Pupil Dia:	4.09 mm
Enter IOP	IOP(Sum): +1.9 mmHg	Lens Th.:	

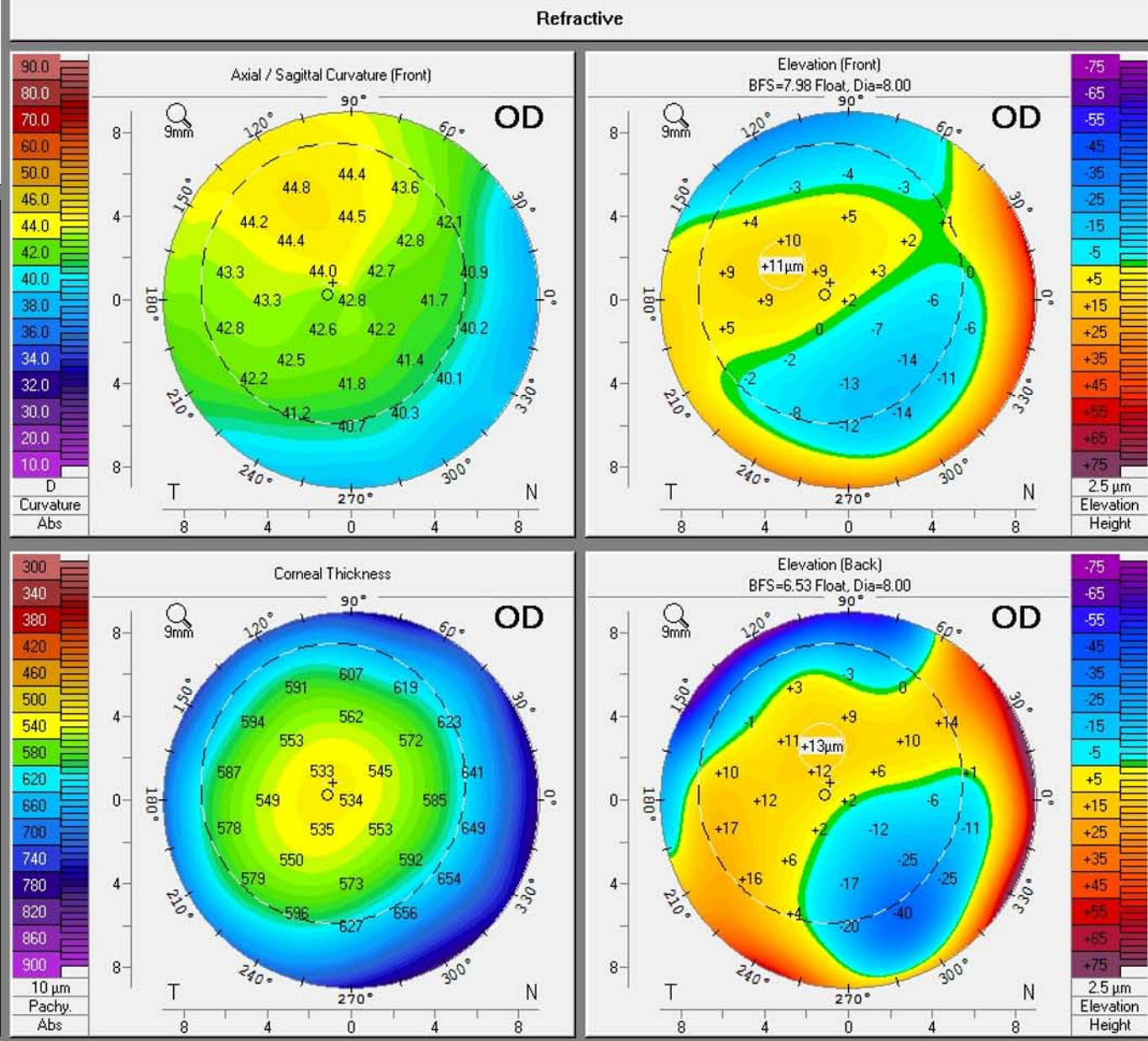
Refractive



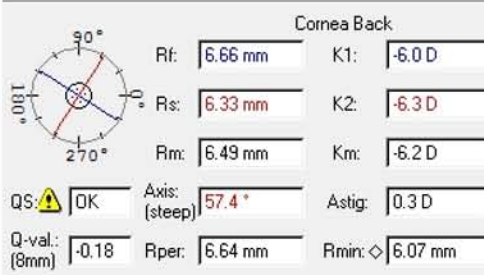
F1: V-6 (OD)



Pupil Center:	+ 531 μm	x[mm]	-0.44	y[mm]	+0.40
Pachy Apex:	534 μm		0.00		0.00
Thinnest Locat.:	531 μm		-0.58		+0.12
K Max. (Front):	44.9 D		-1.10		+2.32
Cornea Volume:	59.5 mm ³	∅ Cornea:			
Chamber Volume:	228 mm ³	Angle:	41.9°		
A. C. Depth (Ext.):	3.98 mm	Pupil Dia:	6.49 mm		
Enter IOP	IOP(Sum): +0.6 mmHg	Lens Th.:	3.19 mm		

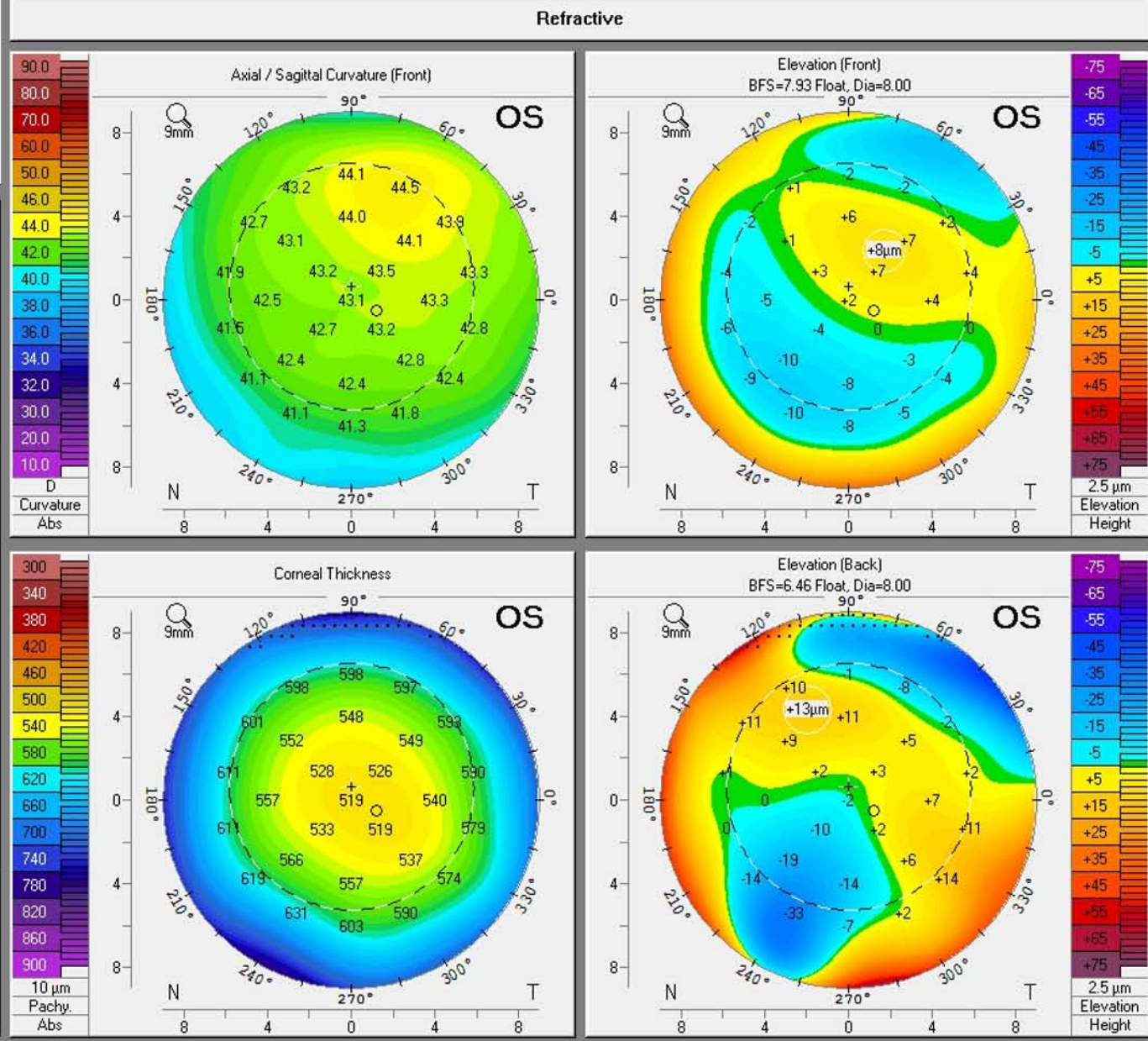


F1: V-6 (OS)

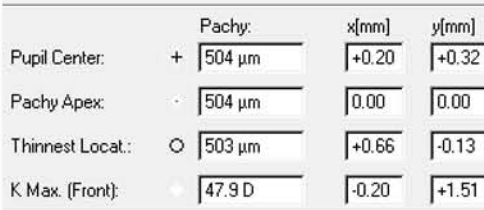
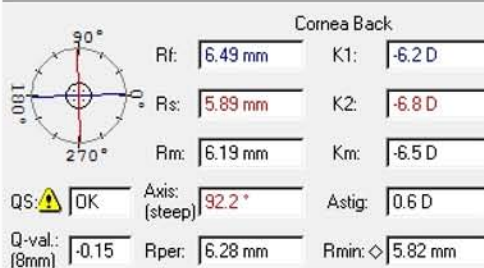
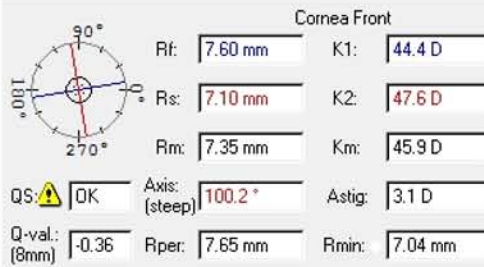


Pupil Center:	+ 520 μm	x[mm]	+0.01	y[mm]	+0.31
Pachy Apex:	519 μm		0.00		0.00
Thinnest Locat.:	517 μm		+0.59		-0.26
K Max. (Front):	44.5 D		+0.99		+2.63

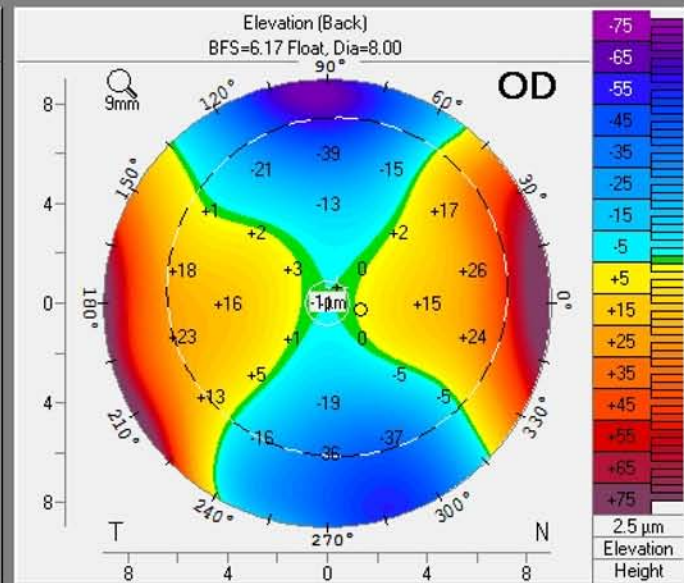
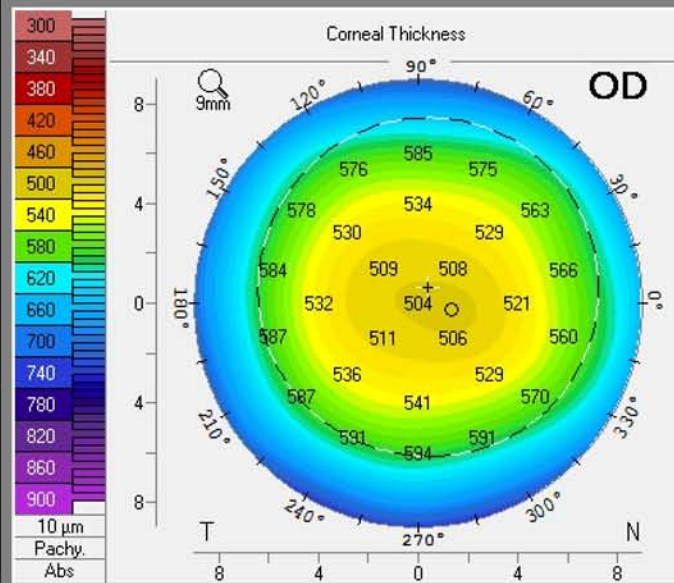
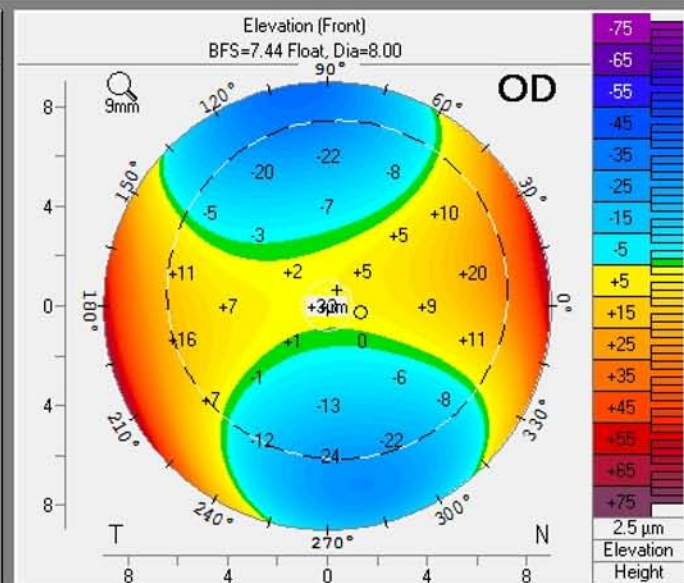
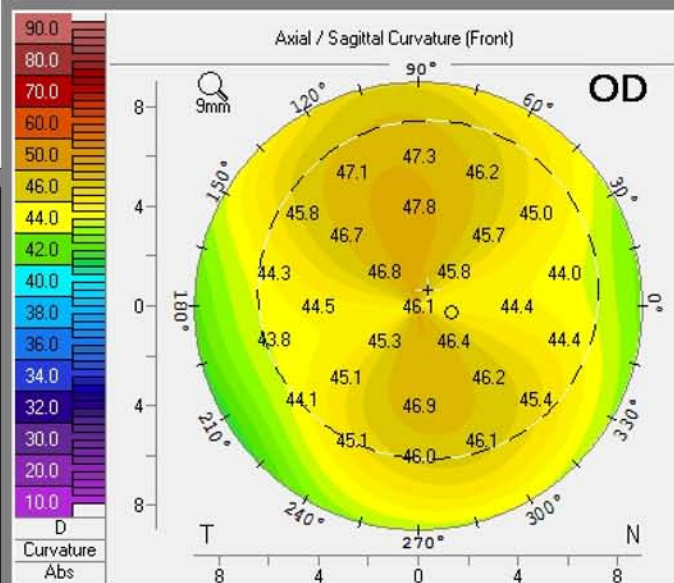
Cornea Volume:	58.8 mm ³	∅ Cornea:	
Chamber Volume:	210 mm ³	Angle:	30.7°
A. C. Depth (Ext.):	3.88 mm	Pupil Dia:	5.87 mm
Enter IOP	IOP(Sum): +1.2 mmHg	Lens Th.:	3.26 mm



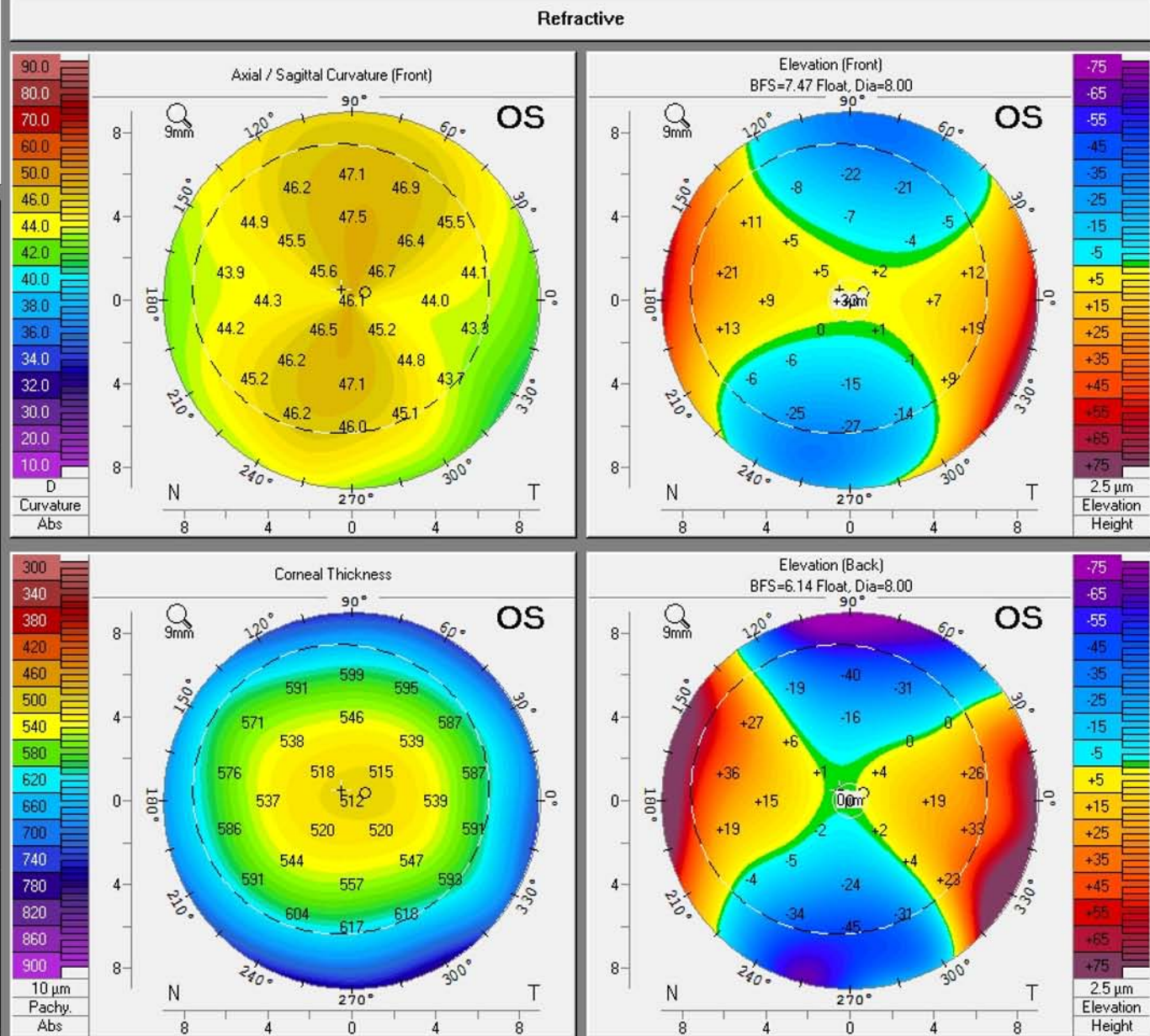
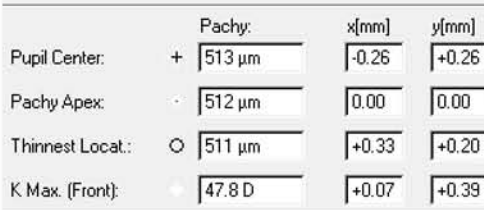
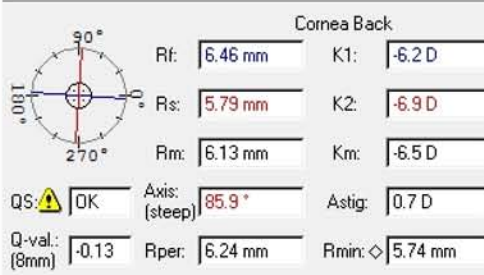
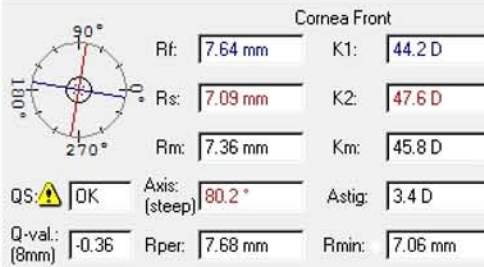
F1: V-7 (OD)



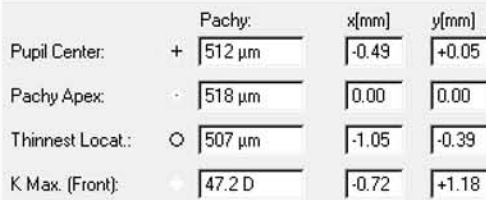
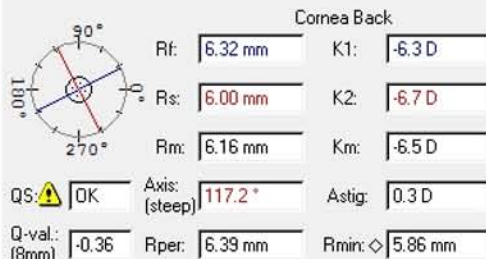
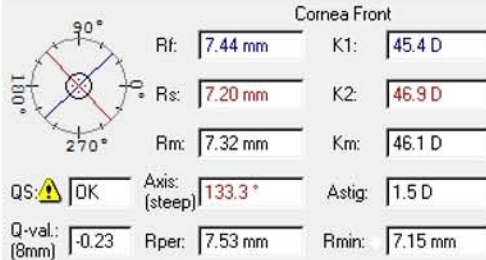
Refractive



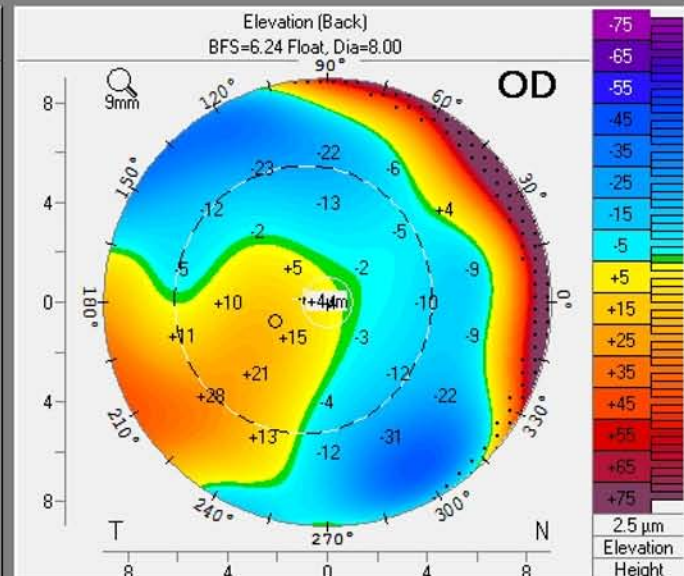
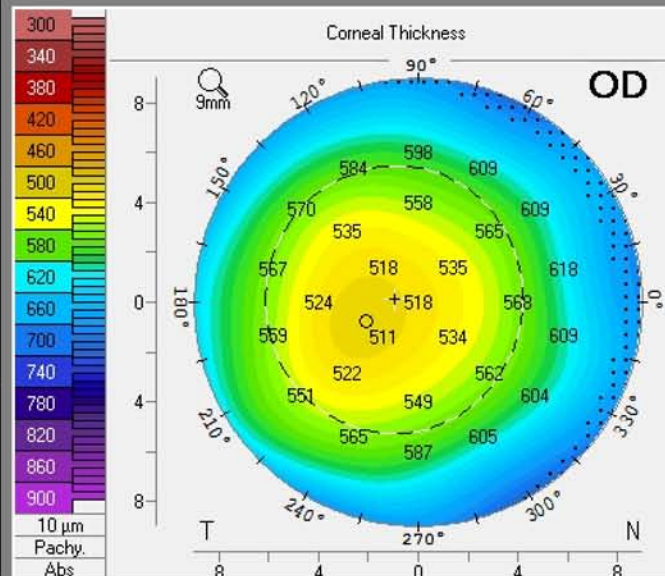
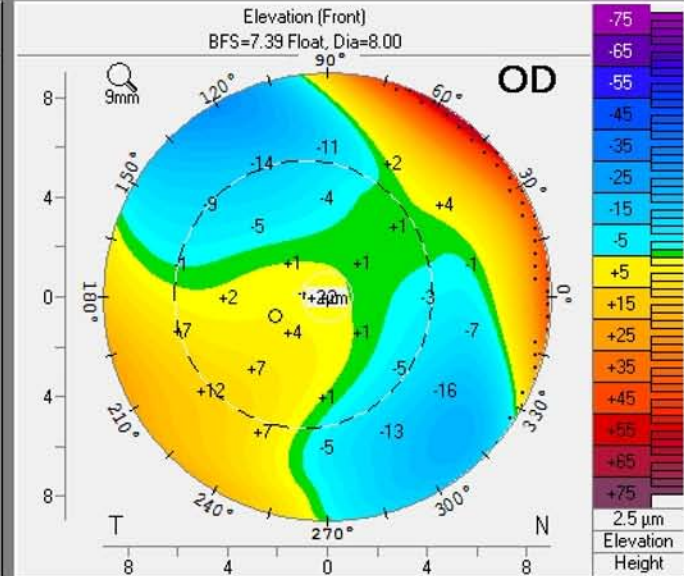
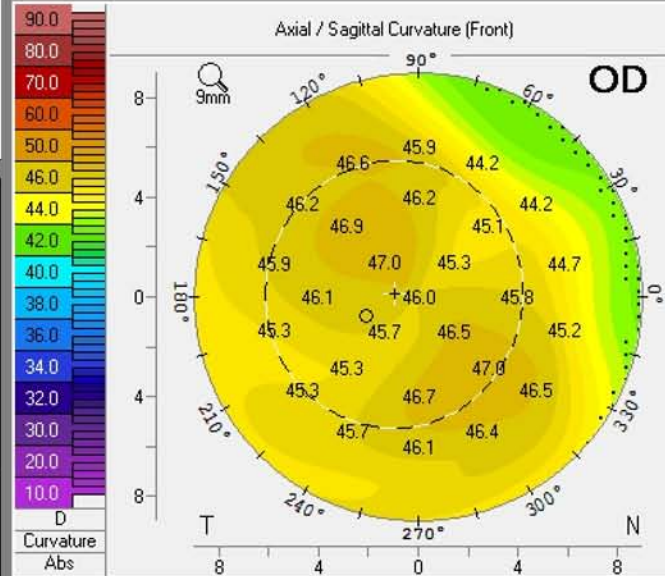
F1: V-7 (OS)



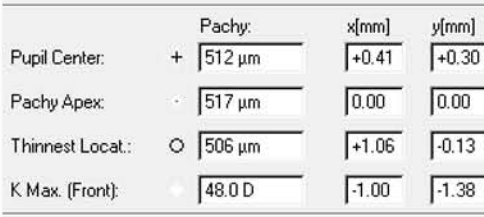
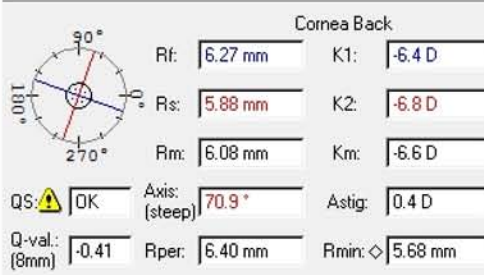
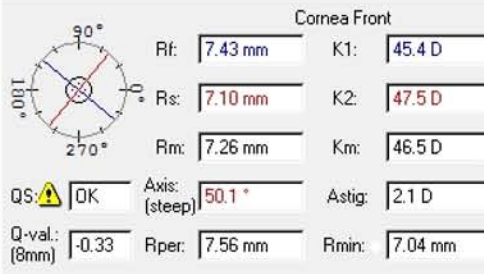
F2: II-3 (OD)



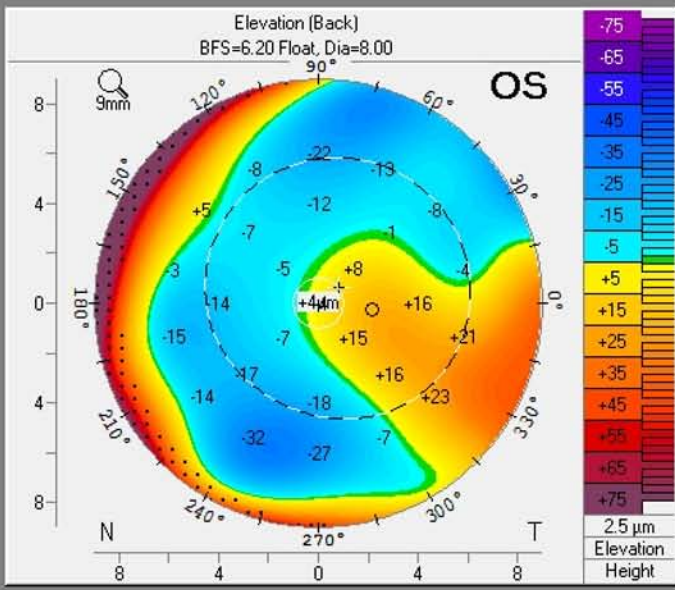
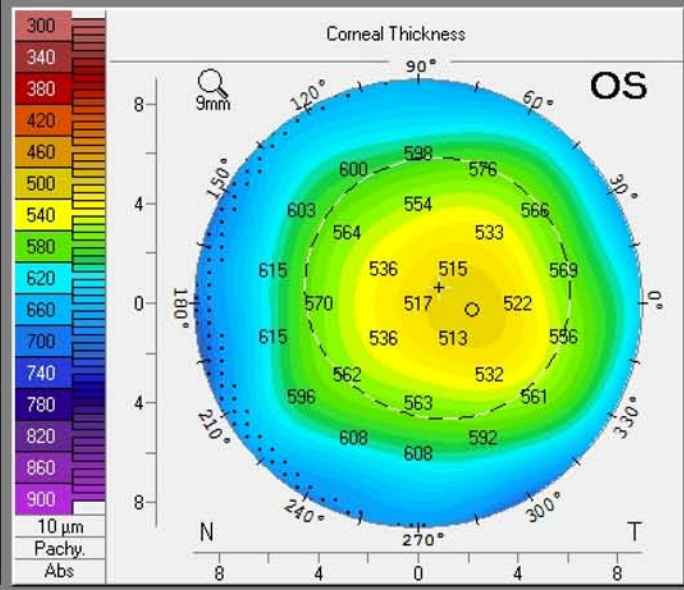
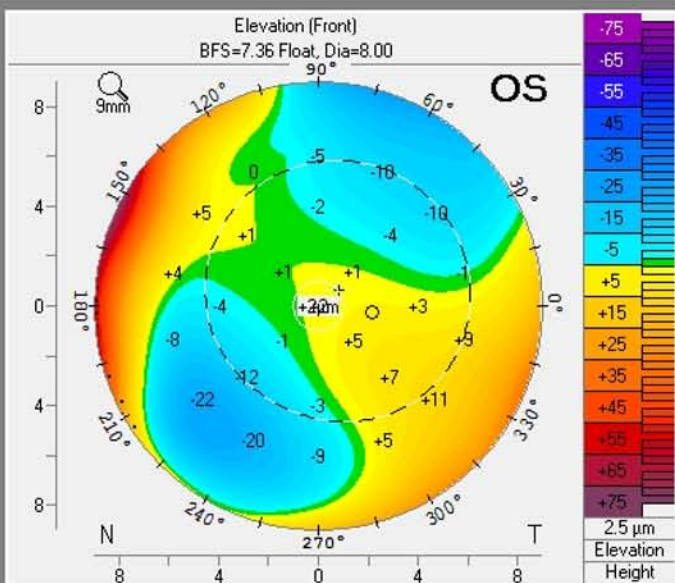
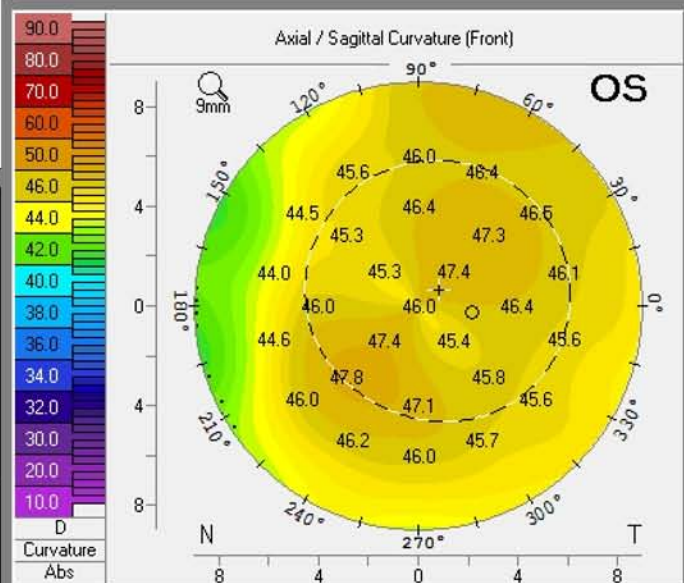
Refractive



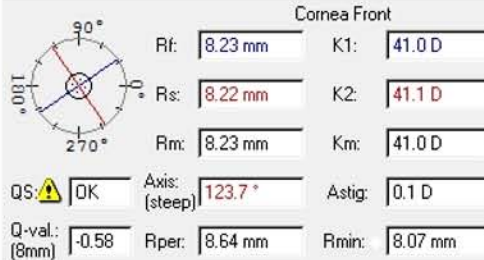
F2: II-3 (OS)



Refractive

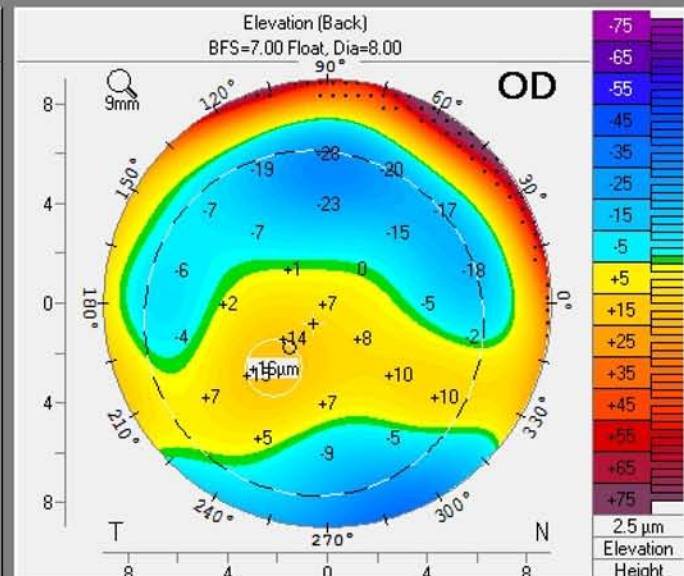
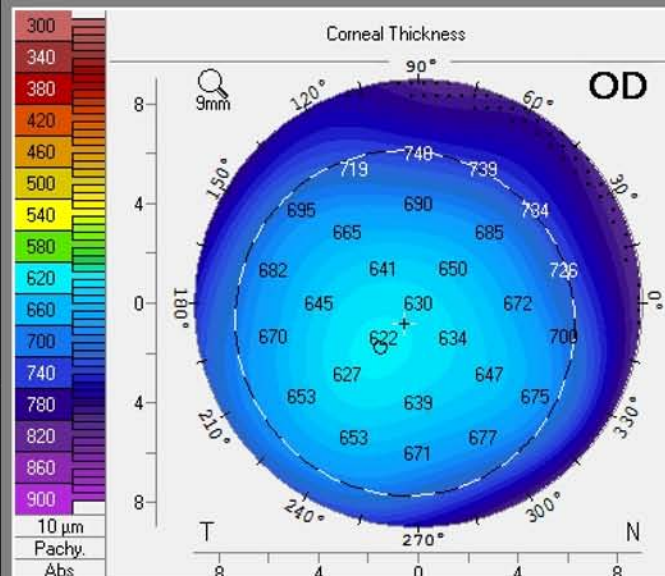
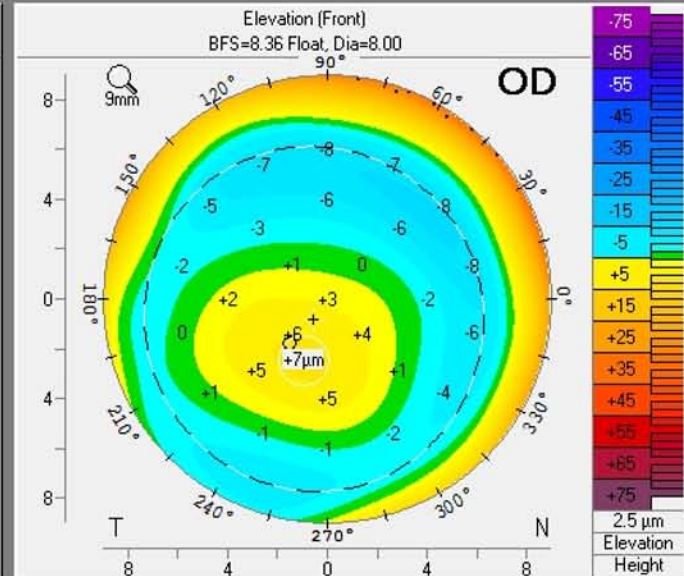
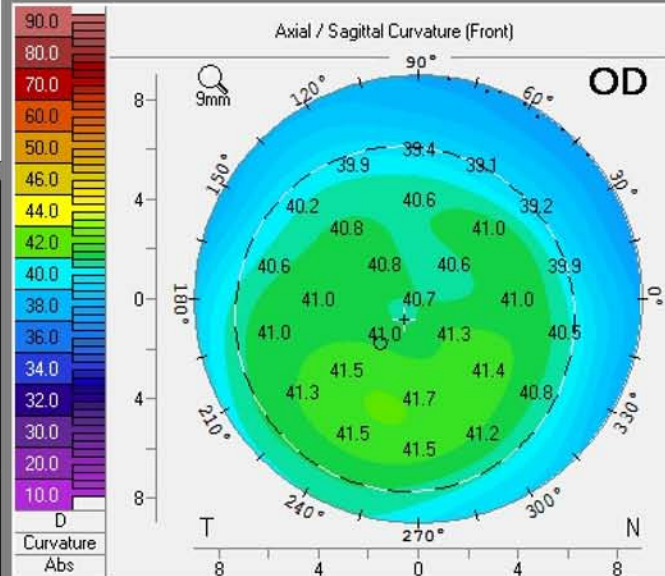


F4: IV-6 (OD)

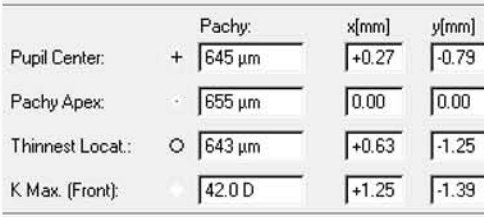
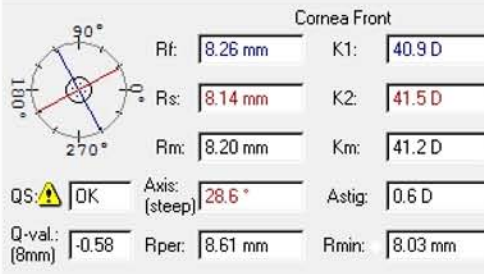


Pupil Center:	+	Pachy:	625 μm	x(mm)	-0.27	y(mm)	-0.40
Pachy Apex:	-		630 μm		0.00		0.00
Thinnest Locat.:	○		622 μm		-0.75		-0.88
K Max. (Front):			41.8 D		-0.68		-2.17
Cornea Volume:		∅ Cornea:	64.4 mm ³		11.2 mm		
Chamber Volume:		Angle:	159 mm ³		15.9°		
A. C. Depth (Ext.):		Pupil Dia:	3.31 mm		6.87 mm		
Enter IOP	IOP(Sum):	Lens Th.:	-3.2 mmHg		3.61 mm		

Refractive



F4: IV-6 (OS)



Refractive

