

Figure S1. Transfection efficiency in LX2 cells was measured using plasmids encoding GFP. (A) LX2 cells co-transfected with miR-200a mimics. (B) LX2 cells co-transfected with miR-200a inhibitor. (C) LX2 cells transfected with NC plasmids.

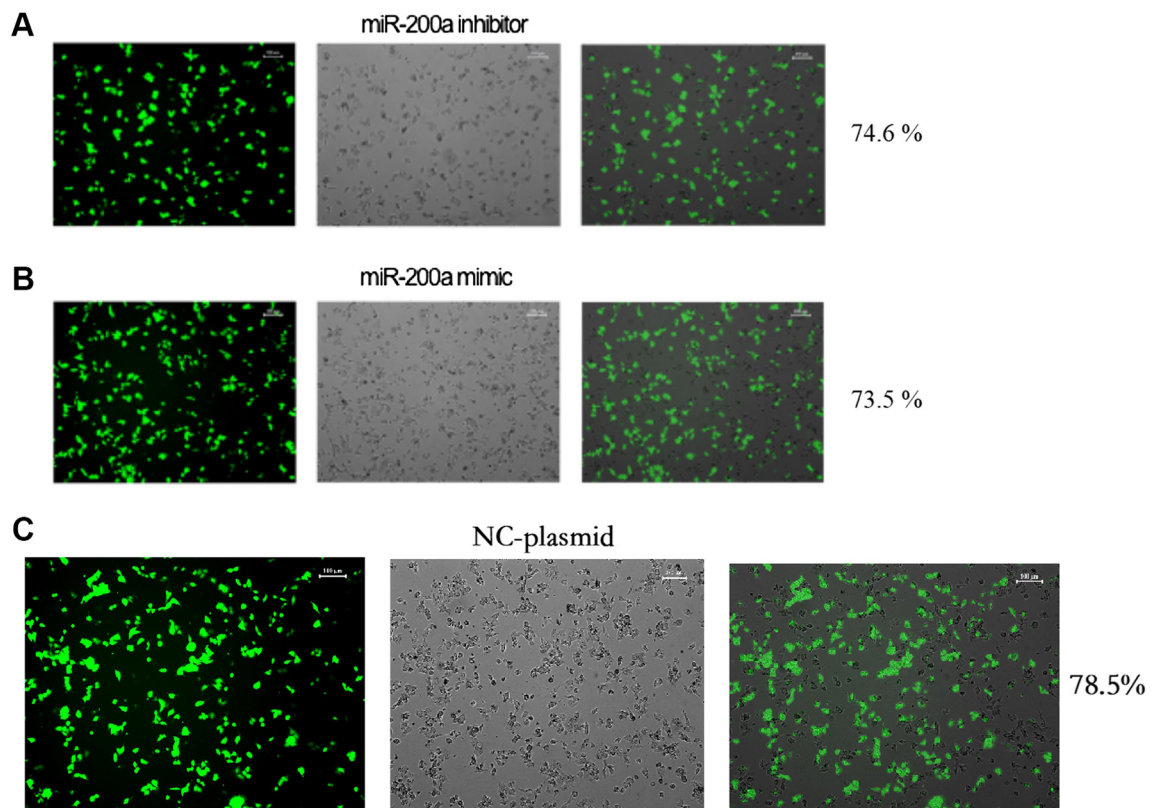


Table SI. Clinical parameters of patients in Groups I and II.

Characteristic	Group I, no. of patients	Group II, no. of patients
Mean age, years	53.5	52.6
Sex		
Male	6	8
Female	4	2
Hepatitis B-positive	7	6
Hepatitis C-positive	1	2

Table SII. Computational prediction of partial GLI family zinc finger 3-targeting miRNAs by TargetScan.

miRNA	Conserved site	Context++score	P _{CT}
hsa-miR-200b-3p	7mer-m8	-0.19	0.91
hsa-miR-200c-3p	7mer-m8	-0.19	0.91

miRNA/miR, microRNA.