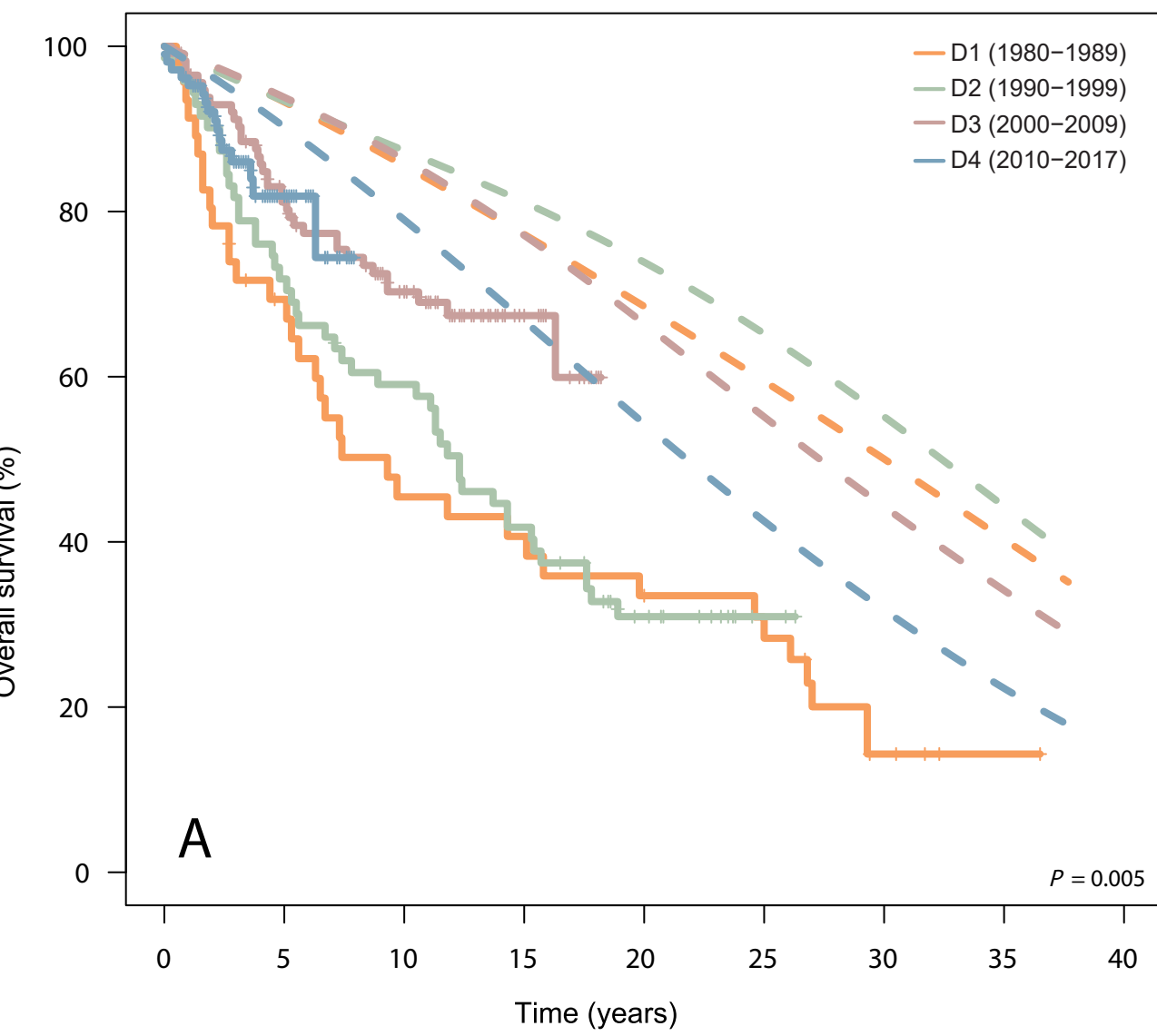
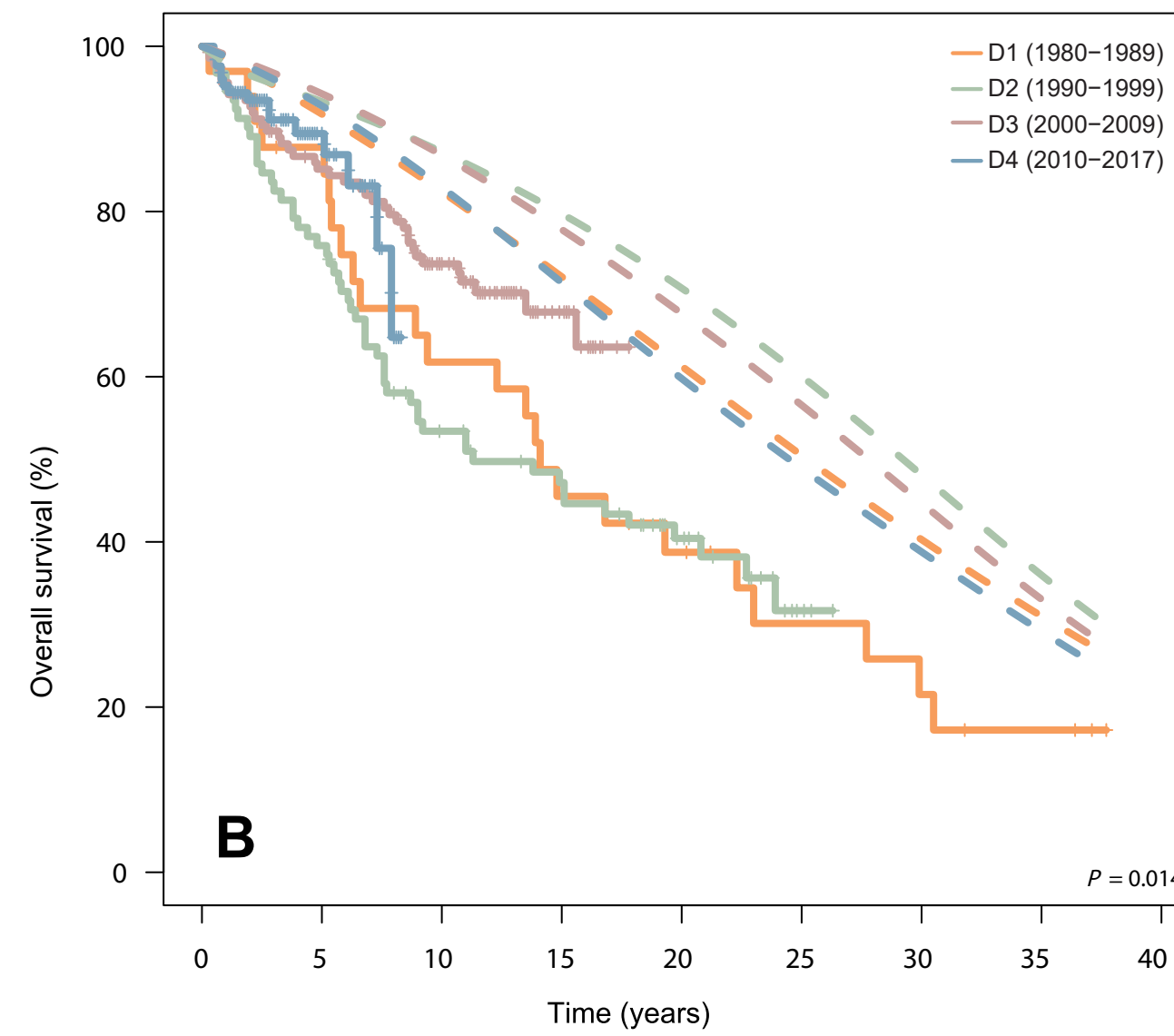


Males

No. at risk:

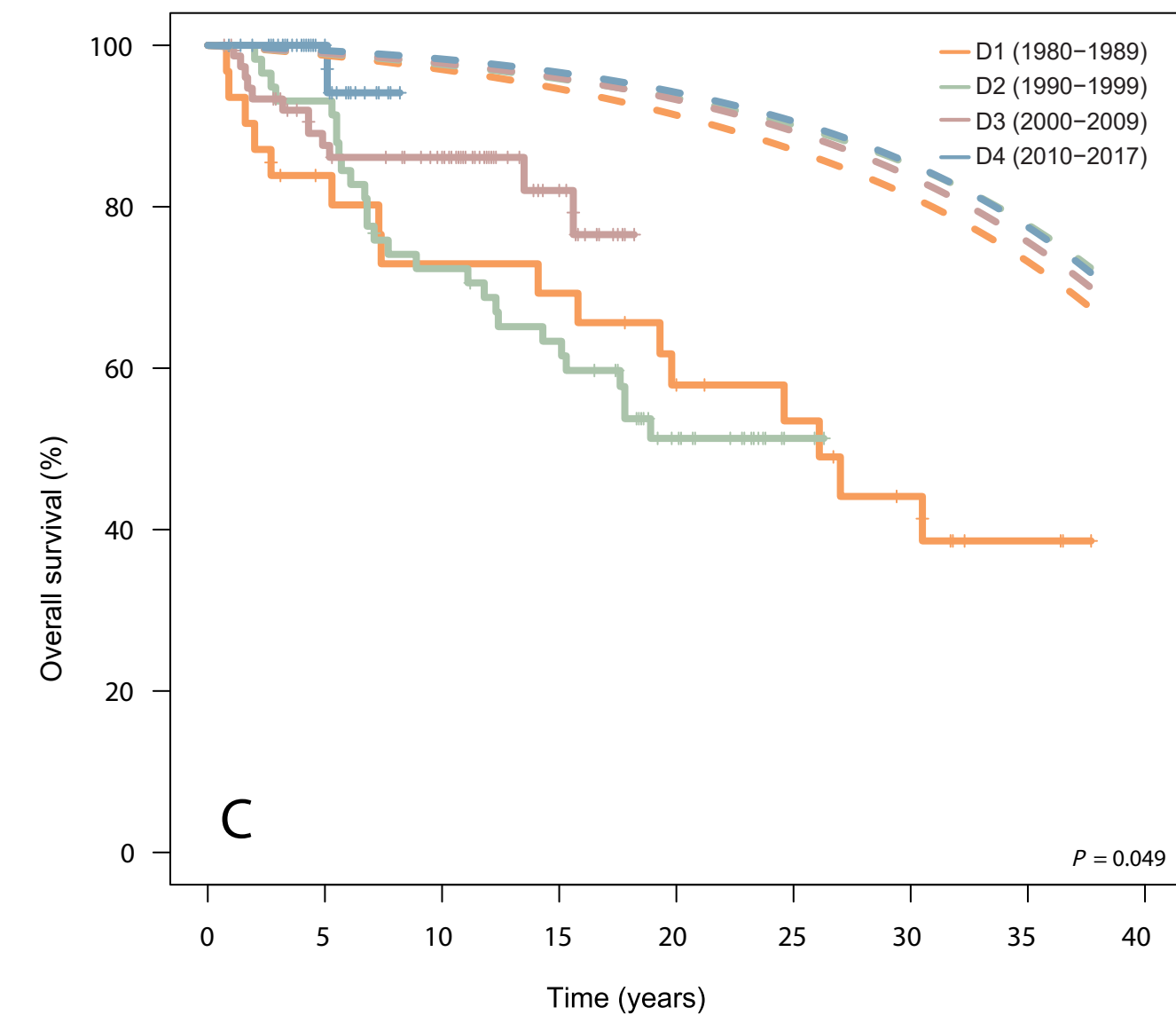
46	29	19	17	14	12	4	1	0
71	51	41	29	14	2	0		
116	87	59	18	0	0			
105	27	0	0					

Females

No. at risk:

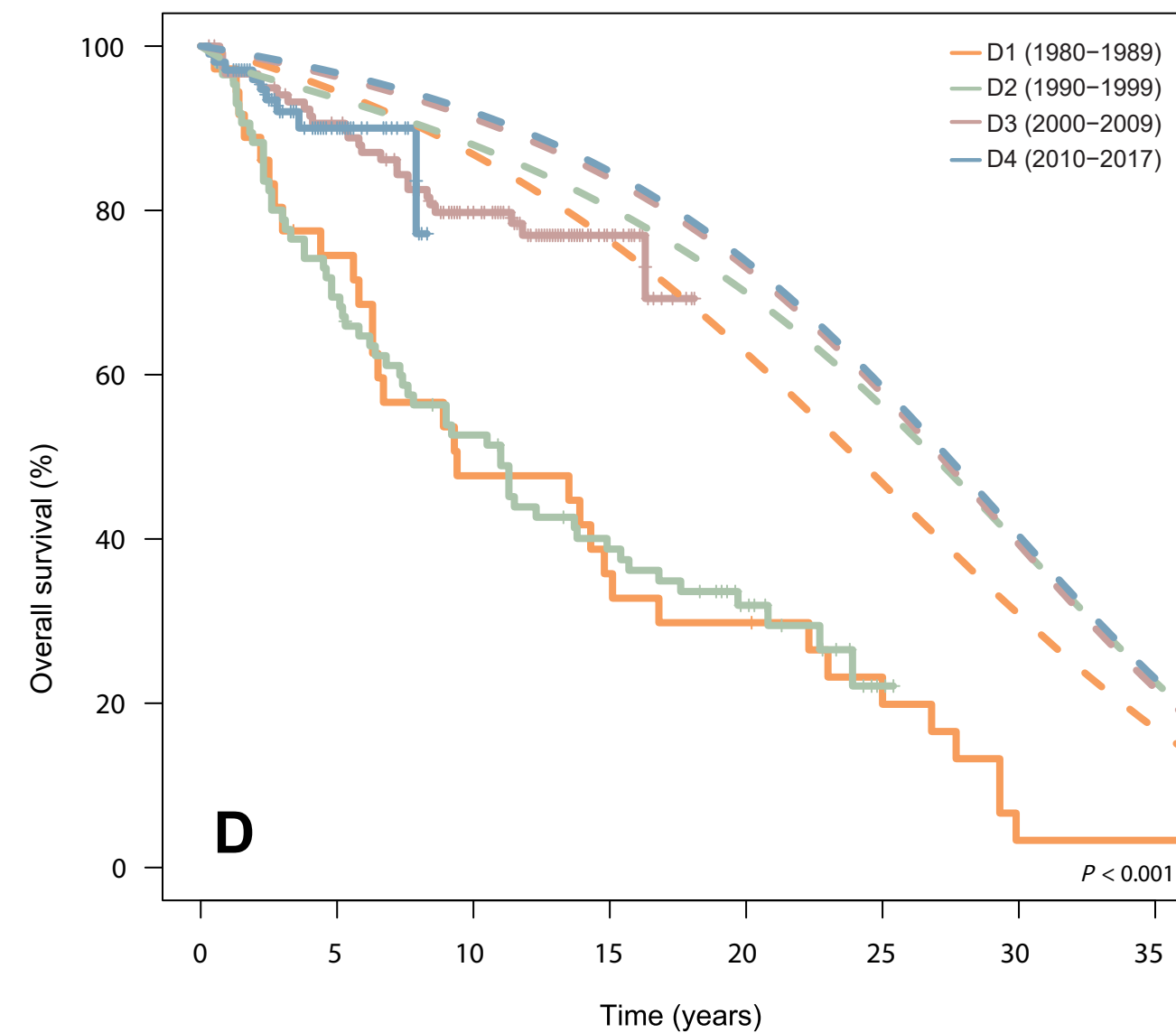
33	27	19	14	11	7	5		
92	69	45	37	23	444	0		
138	110	74	21	0	0			
126	36	0	0					

Supplementary Figure 3. Comparison of observed (solid line) versus expected (dashed line) OS, according to the decade of diagnosis. A: male patients only; B: female patients only; C: patients younger than 50 years; D: patients between 50 and 69 years; and E: patients of 70 years or older.

<50 years

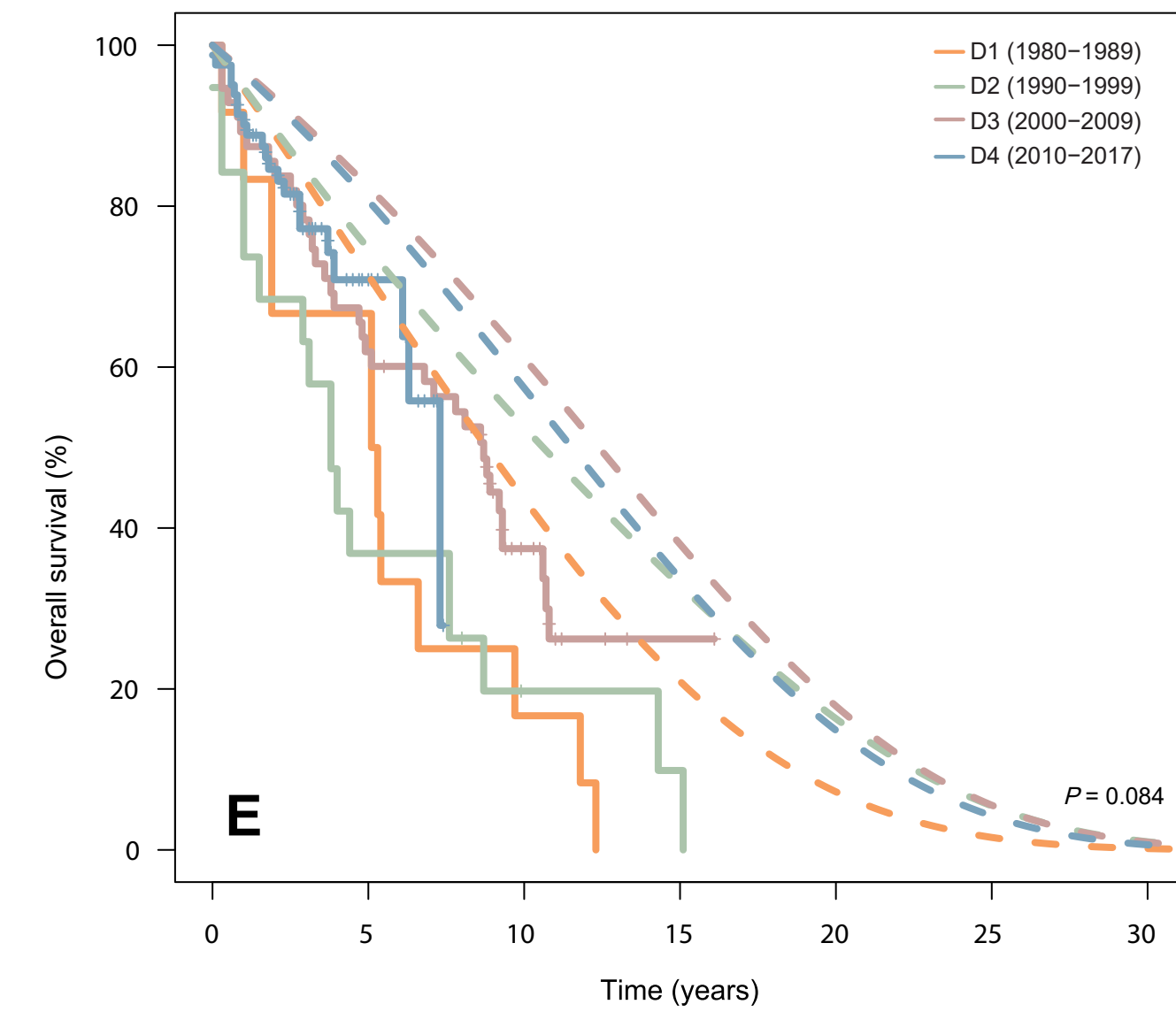
No. at risk:

31	23	20	19	15	12	8	3	0
58	54	41	35	19	4	0		
78	59	48	17	0	0	0		
47	18	0	0					

50-69 years

No. at risk:

36	25	16	12	10	7	1	1	1
86	59	43	30	18	2	0	0	0
120	104	73	21	0	0	0	0	0
103	32	0	0					

>70 years

No. at risk:

12	8	2						
19	7	2						
56	34	12	1	0	0	0	0	0
81	13	0	0					