

Figure 5 Goswami et al. Source Data File

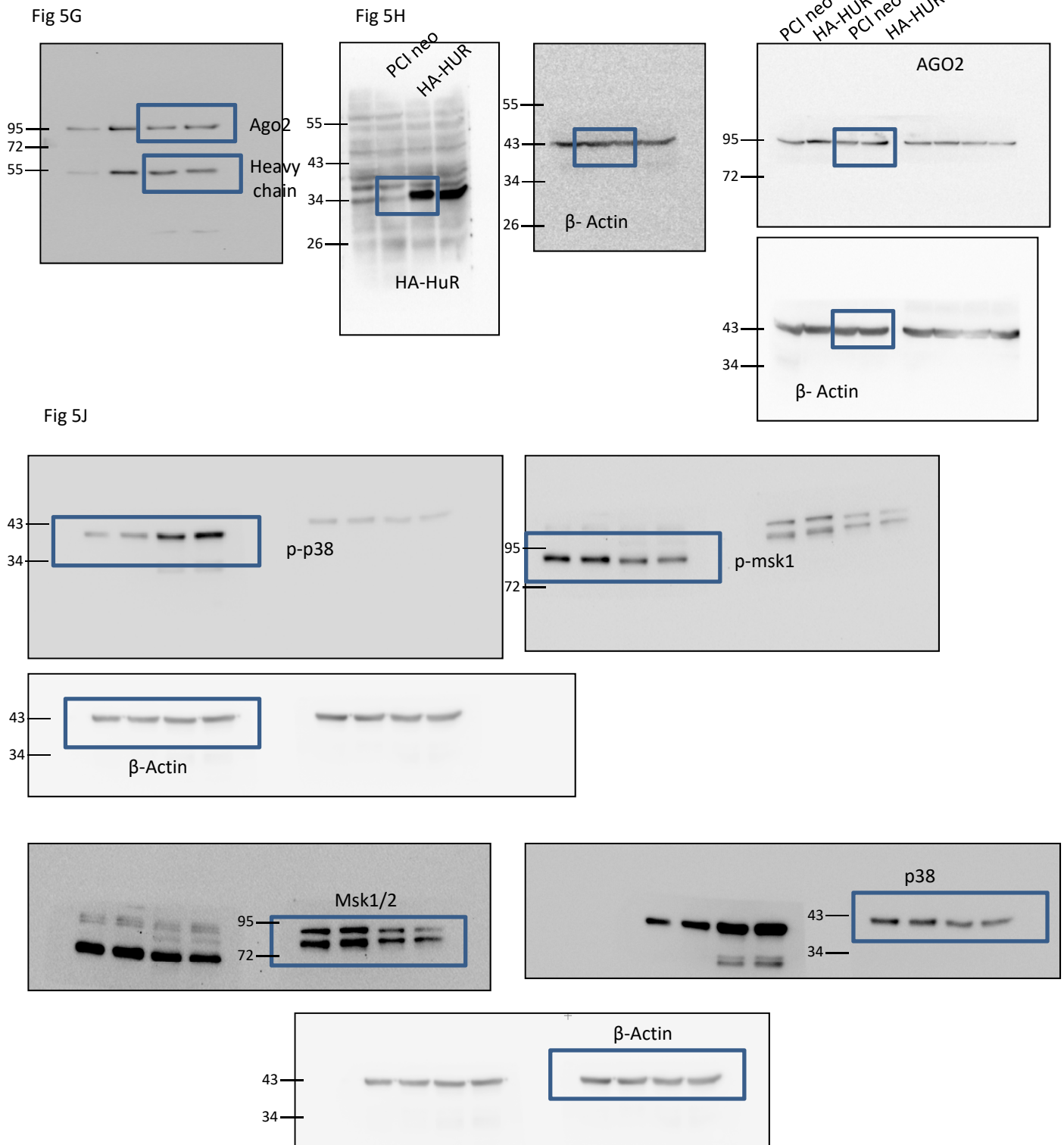


Fig 5K upper left panel

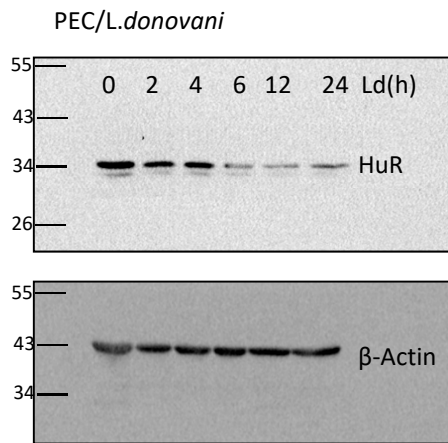


Fig 5K upper right panel

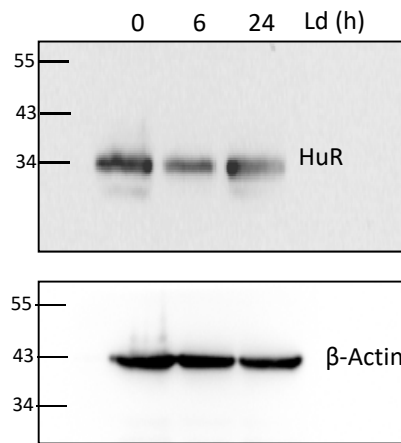


Fig 5K lower right panel

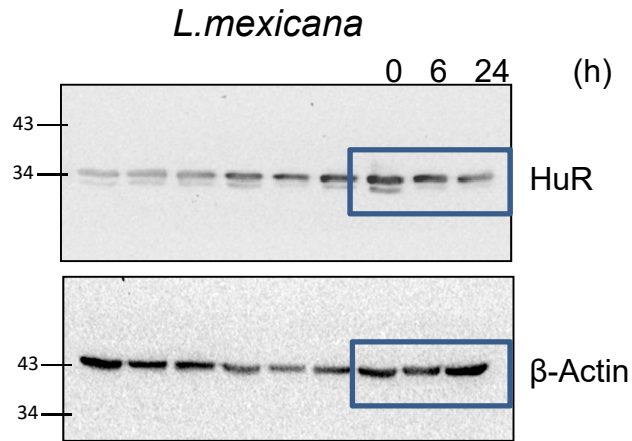
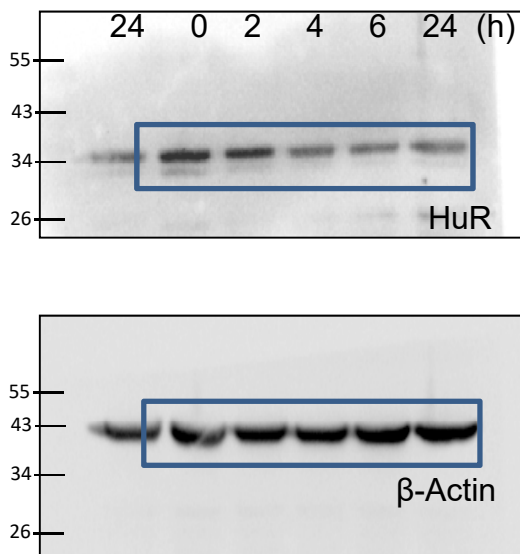


Fig 5K lower left panel



L.major

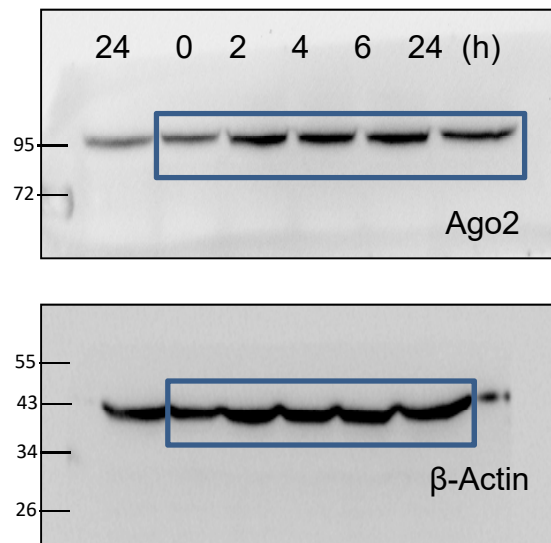


Fig 5L

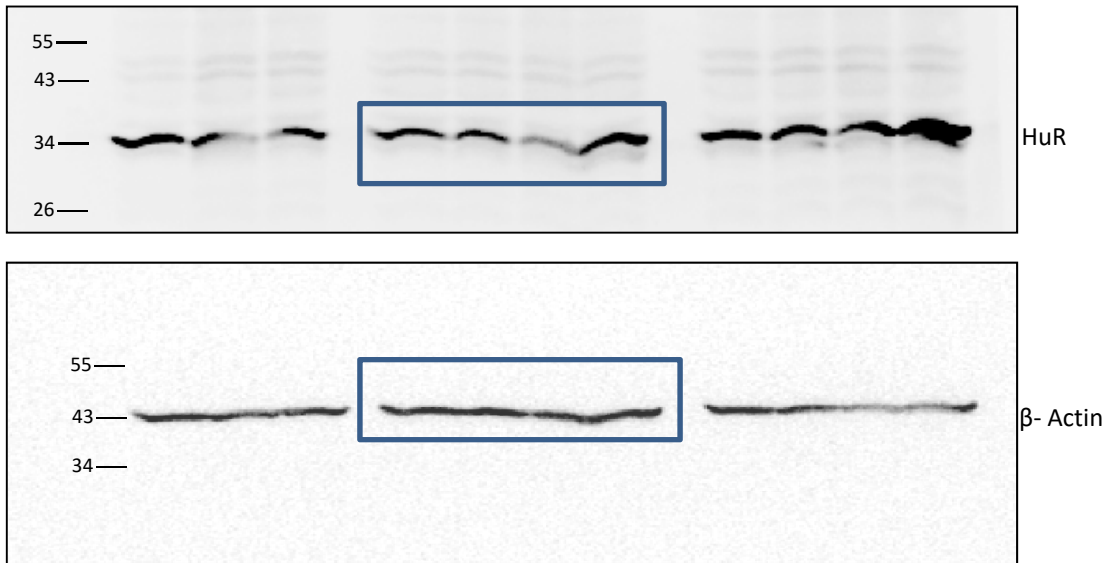


Fig 5M input

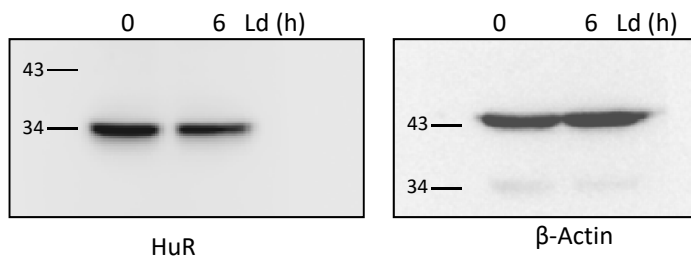


Fig 5M gradient

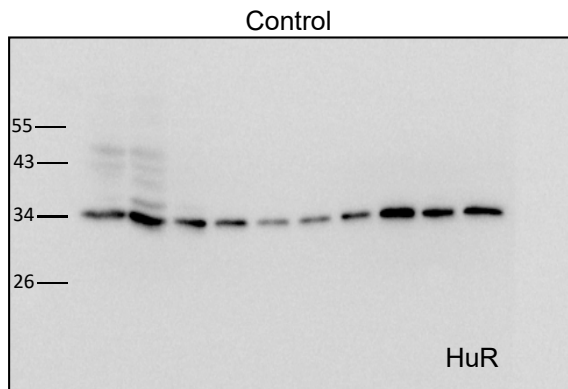


Fig 5N

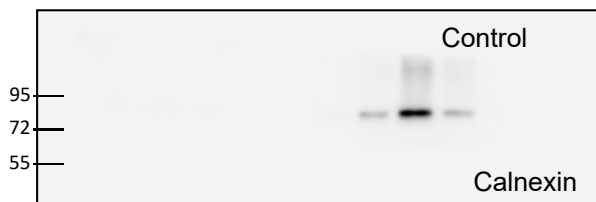
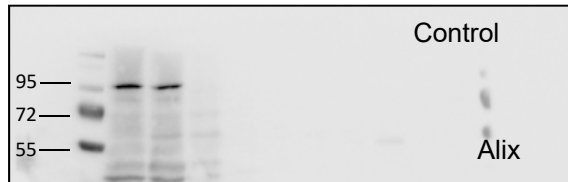
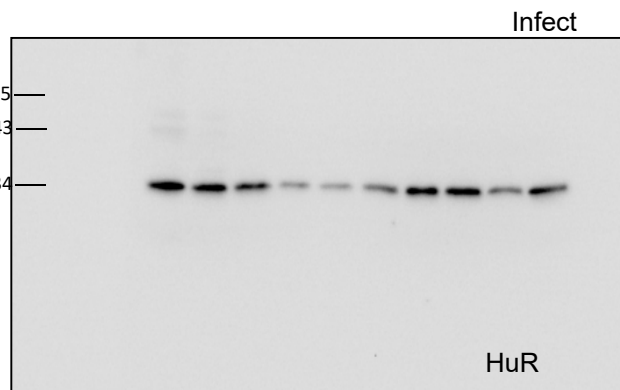


Fig. 5C

let-7a	HuR bound		miR-155	HuR bound	
Wo LPS	W LPS		WoLPS	W LPS	
	1		1.51	1	8.66
	1		1.93	1	6.31
	1		1.79	1	4.74
	1		1.79	1	6.31

Fig. 5E

TNF-a		IL-6				
Wo LPS	W LPS	WLPS +GW	Wo LPS	W LPS	W LPS+GW4869	
	1	18.46	3.11	1	20.09	2
	1	21.8	0.99	1	17.52	1
	1	18.5	1.62	1	27.23	1.4
	1	17.29	1.91	1	21.84	1.7
	1	18.48	1.765	1	20.965	1.55

Fig. 5F

TNFa		IL-6		IL-1B		miR-155		
con siRNA	SiHuR	ConsiRNA	SiHuR	ConsiRNA	SiHuR	ConsiRNA	SiHuR	
	1	0.7	1	0.39	1	0.47	1	23.66
	1	0.42	1	0.57	1	0.55	1	37.6
	1	0.45	1	0.7	1	0.68	1	39.1
	1	0.45	1	0.57	1	0.55	1	37.6

Fig 5 G

	A	B
siCON_6hr LPS		siHuR_6hr LPS
	Y	Y
1	1	2.445110
2	1	2.312739
3	1	2.432898

Fig 5 I left panel

	A	B	C	D
PCI_Neo-LPS		HA_HuR-LPS	PCI_Neo+LPS	HA_HuR+LPS
	Y	Y	Y	Y
1	1.00	1.80	3.18	3.81
2	1.00	2.53	2.85	4.30
3	1.00	3.10	3.14	5.42

FIG 5 I right panel

	A	B	C	D
neo-LPS		HuR-LPS	neo+LPS	HuR+LPS
	Y	Y	Y	Y
1	662.666700	1536.000000	2642.667000	3574.333000
2	904.333300	2202.667000	2699.333000	3859.333000
3	931.000000	1812.667000	2974.333000	3334.333000

Fig 5 L lower panel

	A	B
- mg132		+mg132
	Y	Y
1	1	1.707241
2	1	1.773174
3	1	1.501426