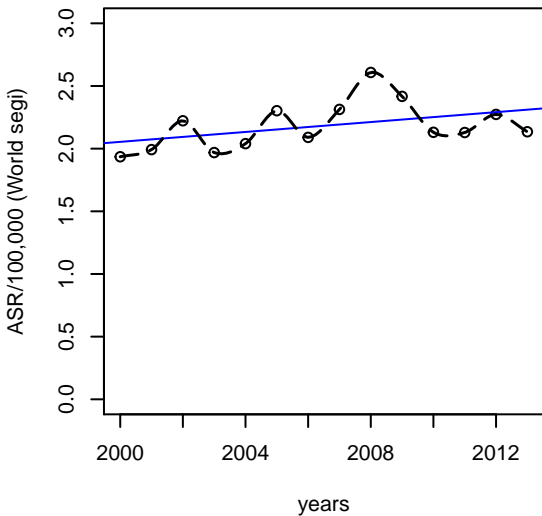
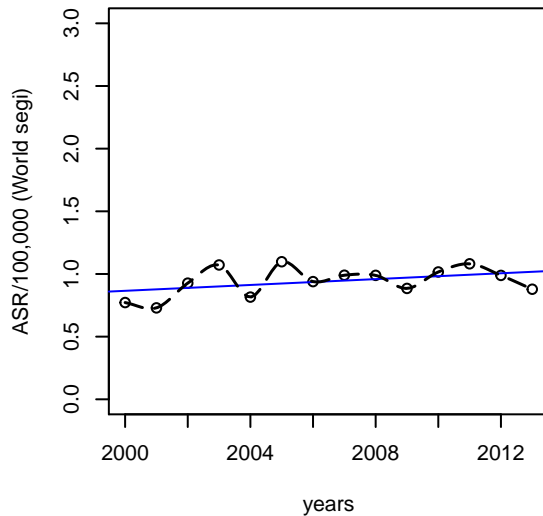


Soft Tissue tumours (n=3766)

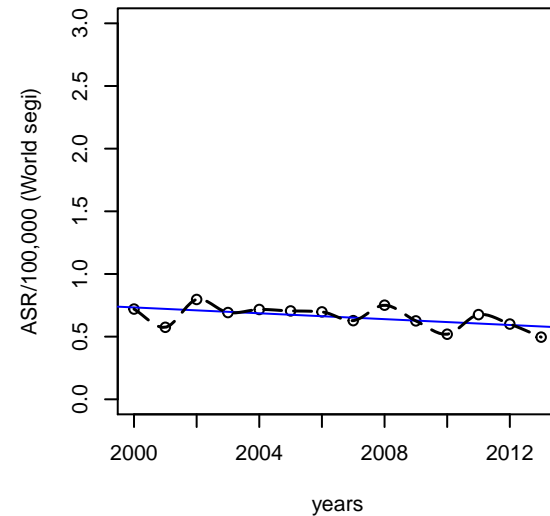
APC= 0.8 | CI95%= (-0.4 ; 2.0)

**Bone tumours (n=1193)**

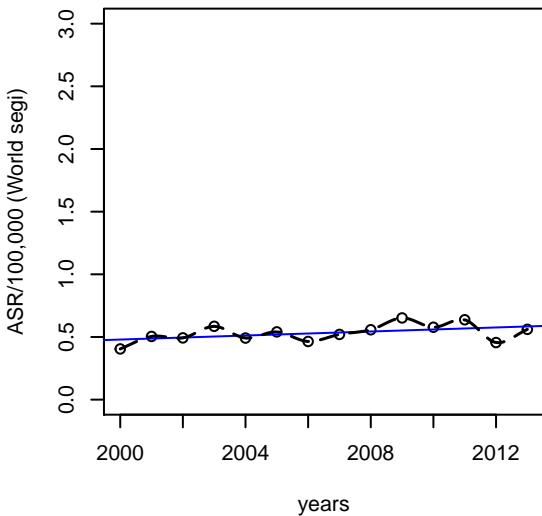
APC= 1.2 | CI95%= (-0.4 ; 2.9)

**Skin tumours (n=1062)**

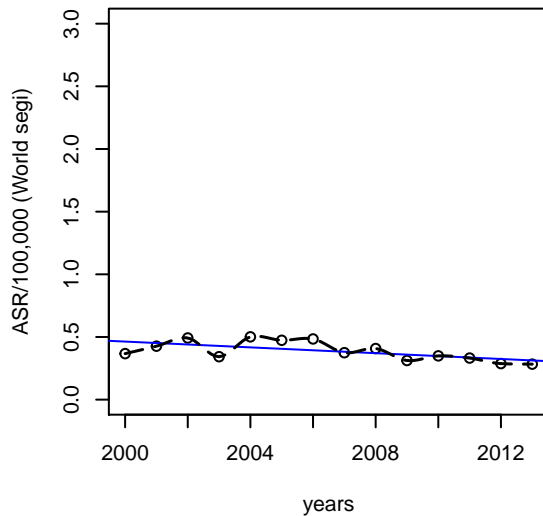
APC= -2.0* | CI95%= (-3.5 ; -0.4)

**Gastro-intestinal tumours (n=1053)**

APC= 1.5 | CI95%= (-0.3 ; 3.3)

**Woman genital tumours (n=673)**

APC= -3,1 | CI95%= (-5.3 ; 0.8)

**Others viscera tumours (n=540)**

APC= -1.7 | CI95%= (-5.1 ; 1.8)

