

PNAS

www.pnas.org

Supplementary Information for

Climate and Plant Community Diversity in Space and Time

Susan Harrison, Marko Spasojevic, Daijiang Li

spharrison@ucdavis.edu

This PDF file includes:

Figures S1 to S2

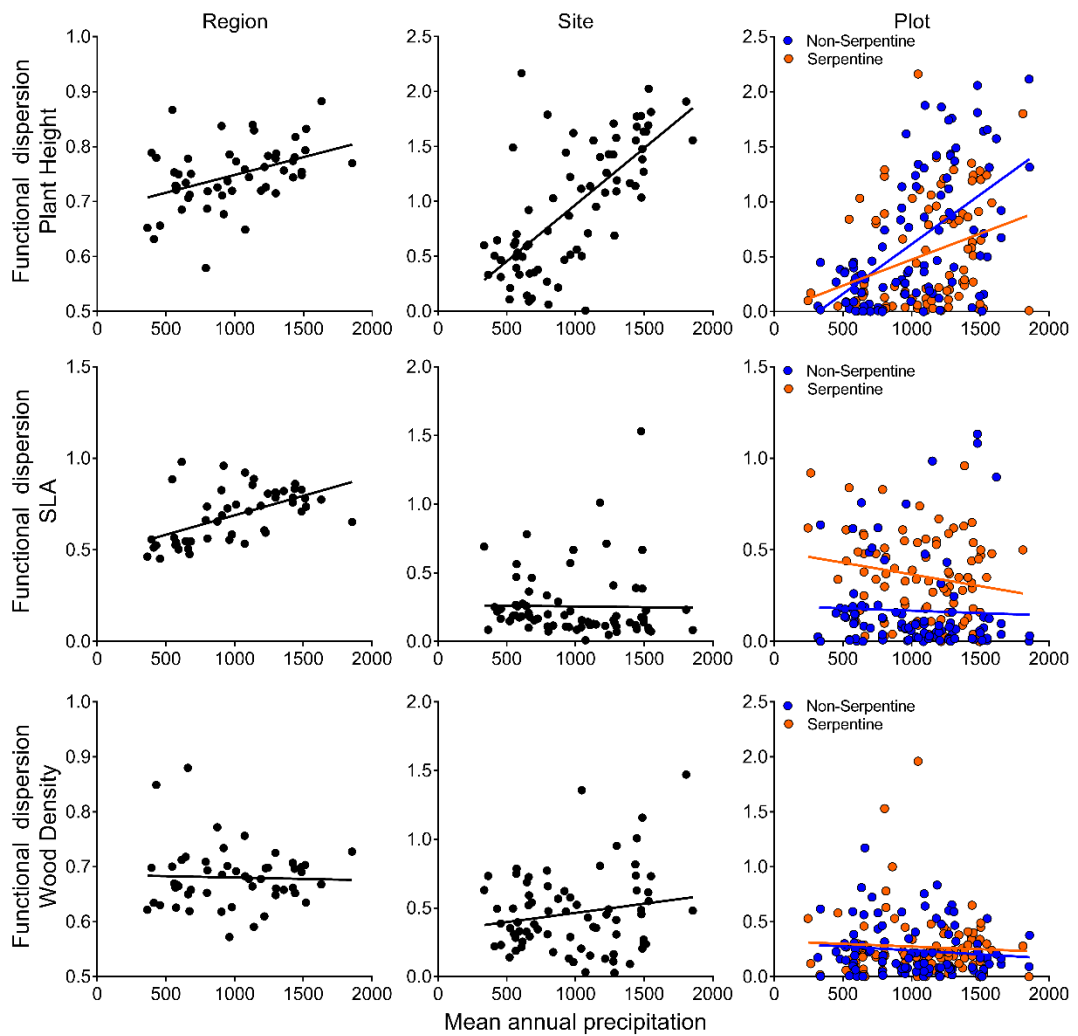


Figure S1. Functional diversity (dispersion) of individual plant traits versus mean annual precipitation. **Plant height:** regional scale ($p = 0.002$), site scale ($p < 0.001$), plot scale (rainfall $p < 0.001$, soil type $p = 0.023$, interaction $p = 0.022$). **Specific leaf area (SLA):** regional ($p < 0.001$), site ($p = 0.882$), plot (rainfall $p = 0.152$, soil type $p < 0.001$, interaction $p = 0.352$). **Wood density:** regional ($p = 0.810$), site ($p = 0.123$), plot (rainfall $p = 0.269$, soil type $p = 0.345$, interaction $p = 0.818$).

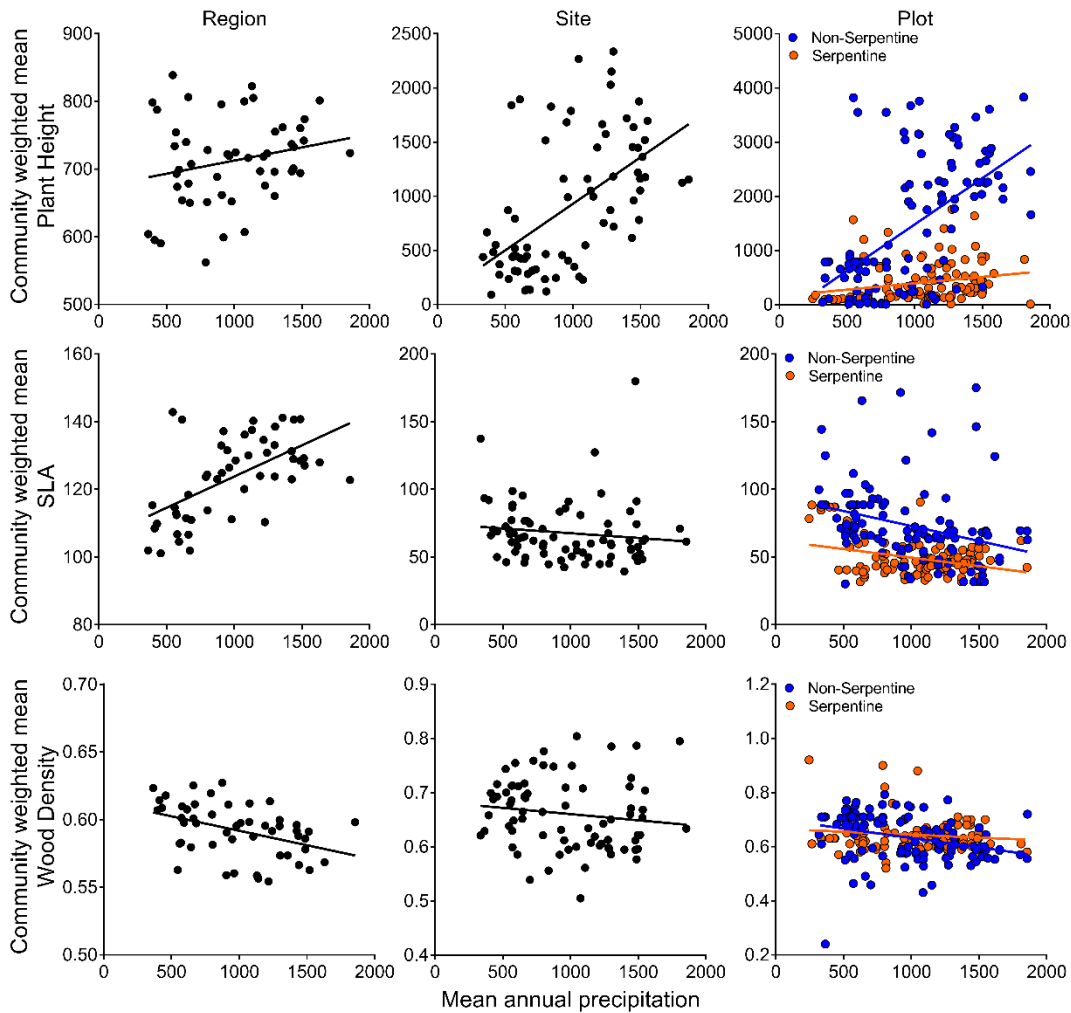


Figure S2. Community weighted means of individual plant traits versus mean annual precipitation. **Plant height:** regional scale ($p = 0.107$), site scale ($p < 0.001$), plot scale (rainfall $p < 0.001$, soil type $p < 0.001$, interaction $p < 0.001$). **Specific leaf area (SLA):** regional ($p < 0.001$), site ($p = 0.288$), plot (rainfall $p < 0.001$, soil type $p < 0.001$, interaction $p = 0.113$). **Wood density:** regional ($p = 0.002$), site ($p = 0.230$), plot (rainfall $p = 0.005$, soil type $p = 0.280$, interaction $p = 0.046$).