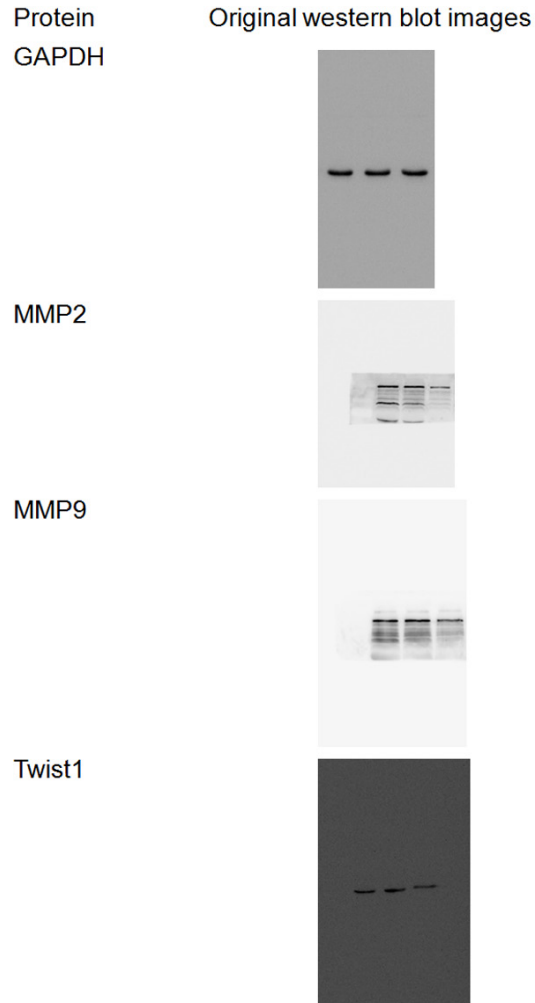
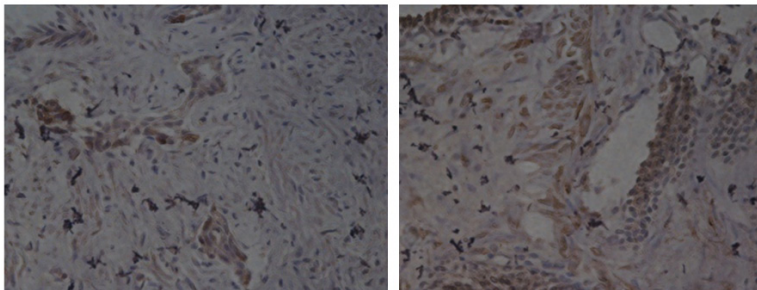


A novel therapeutic target of renal carcinoma



Supplementary Figure 1. The original western bolt images for **Figure 4E**. The expression of MMP2 and MMP9 protein were measured and quantitated (right panel) following control shRNA treatment of shRNA downregulation of miR-363-3p in 786-O cells.

Non-metastatic RCC tissues Metastatic RCC tissues



Supplementary Figure 2. Immunohistochemistry analysis was performed to analyze the Twist1 expression status. The Twist1 expression ratio (60%, n=29) in metastatic RCC specimens was significantly higher than that (30%, n=36) in non-metastatic RCC specimens ($\chi^2=15$, $P=0.01$).